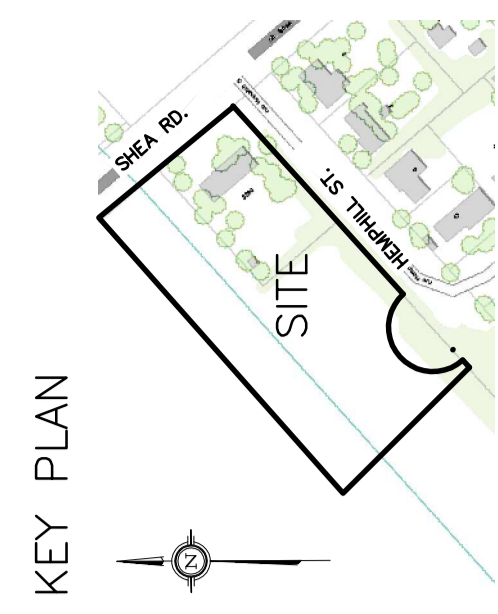


DRAWING LEGEND	
CB	CATCH BASIN
MH	MANHOLE
CB/MH	CATCH BASIN/MANHOLE
WS/WM	WATER SERVICE / WATERMAIN
SS	SANITARY SEWER
ST	STORM SEWER
FI	FIRE HYDRANT
UP	UTILITY POLE
---	EXISTING GRADE ELEVATION
+	PROPOSED GRADE ELEVATION
0.3%	EXISTING SLOPE OF GRADE
0.3%	SLOPE OF GRADE
---	SWALE/DITCH (CENTERLINE)
---	TOP OF SLOPE
---	BOTTOM OF SLOPE
---	PROPERTY LINE
F.F.L.	FIRST FLOOR ELEVATION
T.O.P.	TOP OF FOUNDATION ELEVATION
B.F.L.	BASMENT FLOOR ELEVATION
U.S.F.	UNDERSIDE OF FOOTING ELEVATION



No.	Date	REVISION
1	DEC 15-17	ISSUED FOR CLIENT REVIEW
2	AUG 29-18	ISSUED FOR APPROVAL

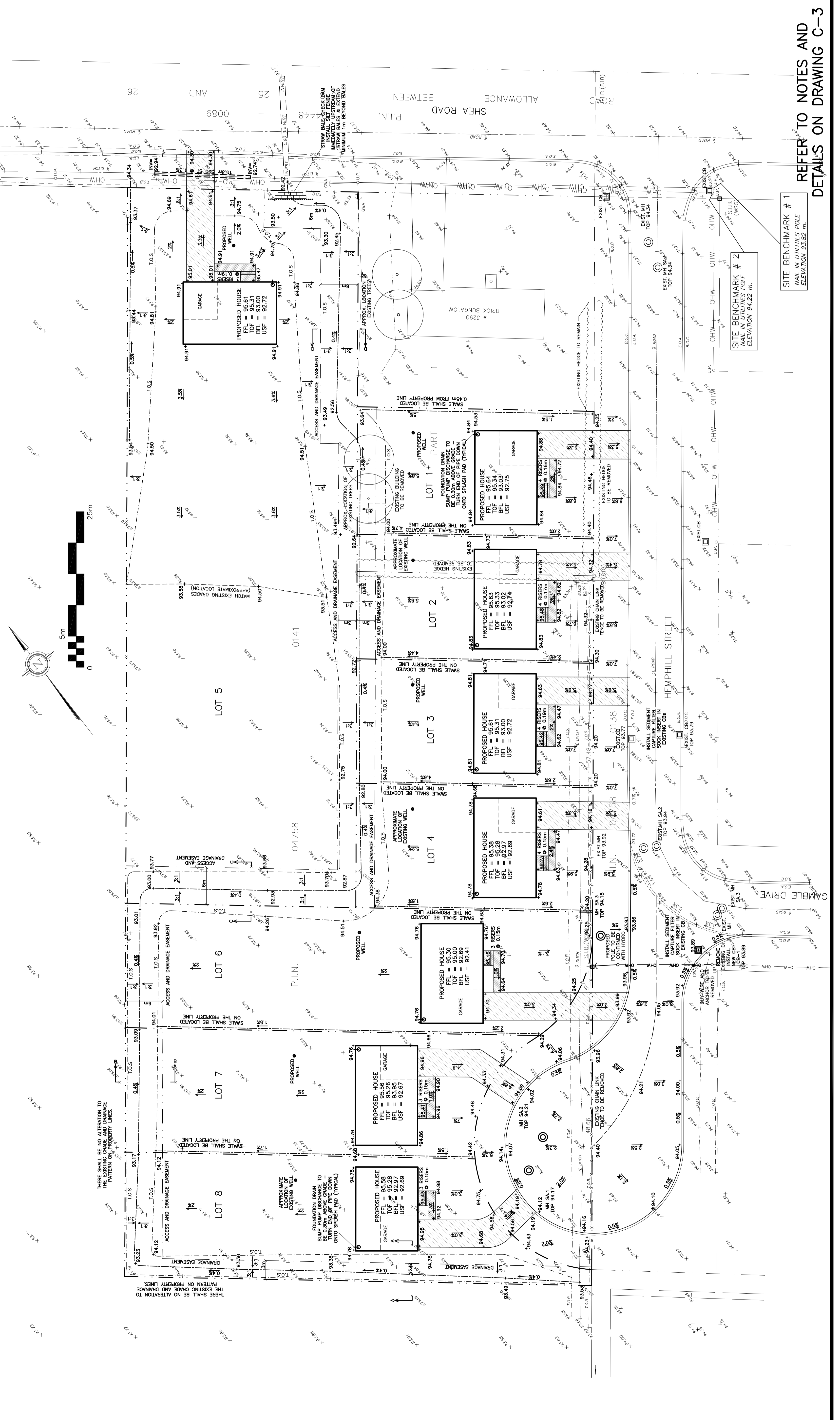
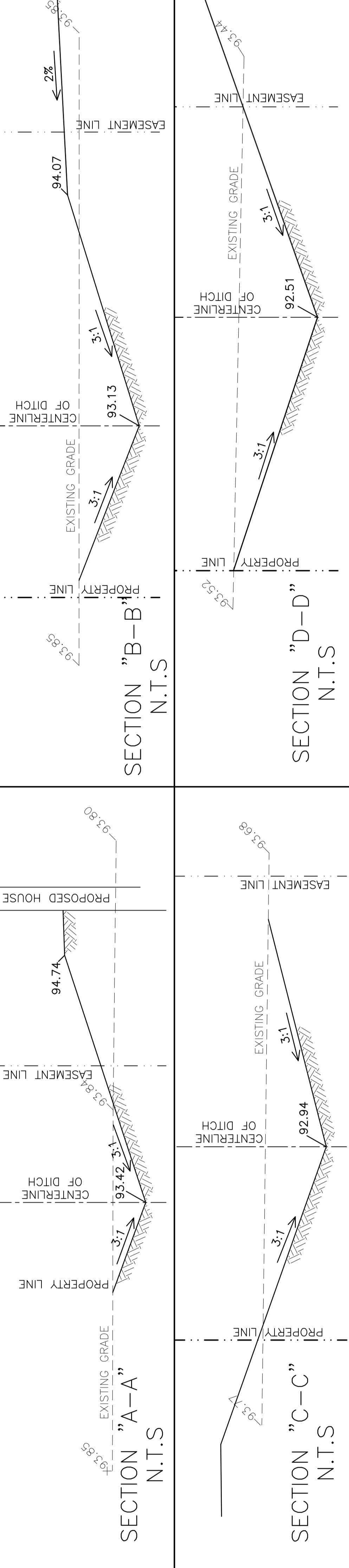
D. B. GRAY ENGINEERING INC.
 700 Long Point Circle
 Ottawa, Ontario K1T 4E9
 Tel: 613-425-8044
 dgray@engr.com

PROPOSED 8-LOT RESIDENTIAL DEVELOPMENT
 HEMPHILL STREET/SHEA ROAD
 RICHMOND, ONTARIO

GRADING PLAN AND EROSION & SEDIMENT CONTROL PLAN

Engineer's Seal

 Drawing No. **C-2** of **3**
 NOT VALID UNLESS SIGNED & DATED



SITE BENCHMARK # 1
 NAIL IN UTILITIES POLE
 ELEVATION 93.82 m.

SITE BENCHMARK # 2
 NAIL IN UTILITIES POLE
 ELEVATION 94.22 m.

REFER TO NOTES AND DETAILS ON DRAWING C-3