

KEY PLAN
 (MARCH)
 SUBJECT TO THE CONDITIONS, IF ANY, SET FORTH IN THE DRAFT PLAN AND THE DRAFT PLAN IS APPROVED BY THE CITY OF OTTAWA UNDER SECTION 51 OF THE PLANNING ACT.
 THIS PLAN OF SUBDIVISION IS APPROVED BY THE CITY OF OTTAWA UNDER SECTION 51 OF THE PLANNING ACT.
 ADAM BROWN, MANAGER
 PLANNING DEPARTMENT, CITY OF OTTAWA

DRAFT PLAN OF SUBDIVISION
PART OF LOT 12
CONCESSION 4
(GEOGRAPHIC TOWNSHIP OF MARCH)
CITY OF OTTAWA

METRIC CONVERSION
 DISTANCES AND COORDINATES SHOWN ON THIS PLAN ARE IN METERS AND CAN BE CONVERTED TO FEET BY DIVIDING BY 0.3048

GRID SCALE CONVERSION
 DISTANCES ARE GRID AND CAN BE CONVERTED TO GRID BY MULTIPLYING BY THE COMBINED SCALE FACTOR OF 0.99992

BEARING NOTE
 BEARINGS ARE DERIVED FROM PLAN 40-3137 PREPARED BY OTHER.

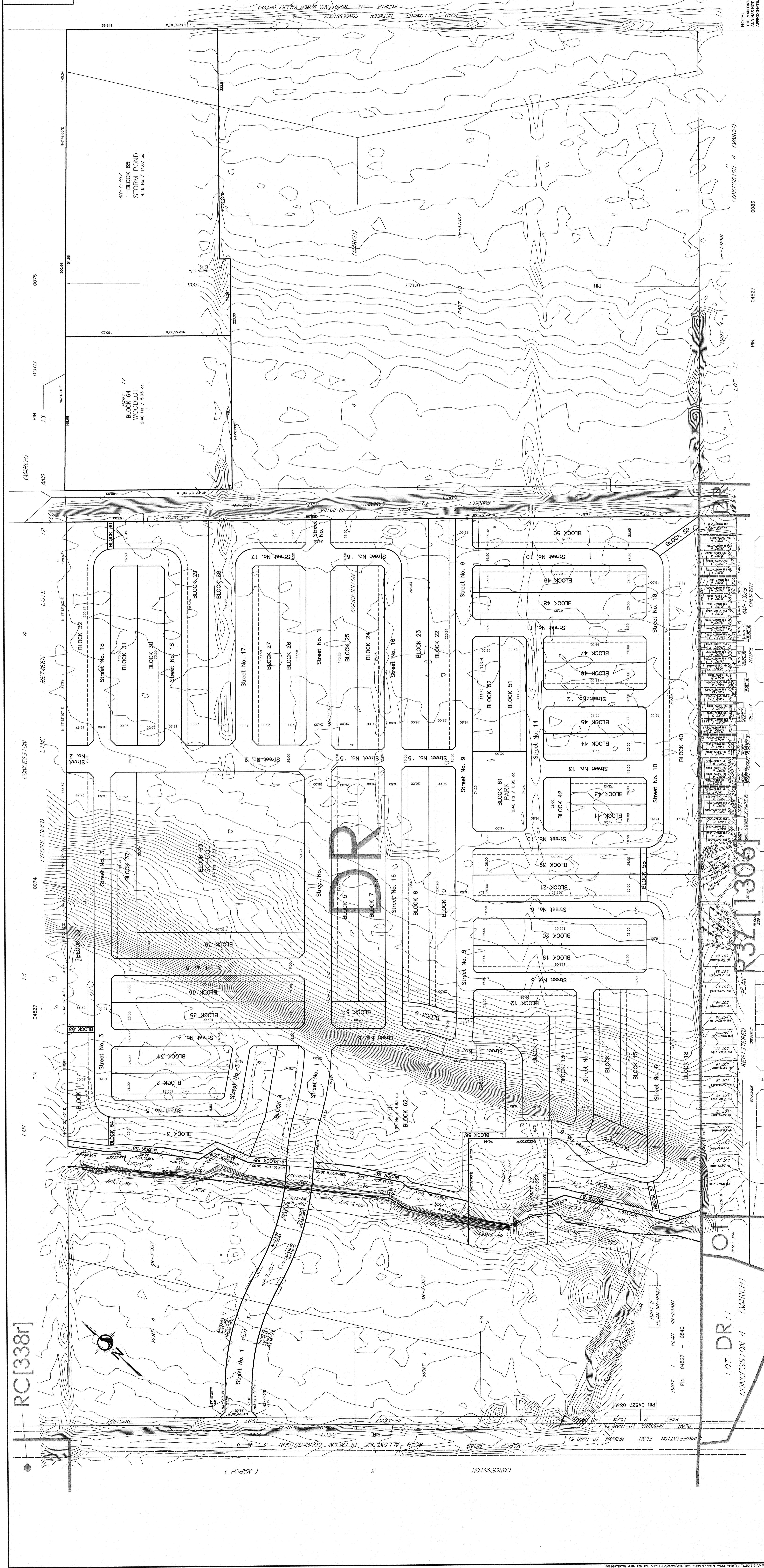
INFORMATION REQUIRED UNDER SECTION 51(1) OF THE PLANNING ACT R.S.O. 1990

- SEE PLAN
- SEE PLAN
- SEE PLAN
- SEE PROPOSED LAND USE SCHEDULE (ABOVE)
- SEE PLAN
- SEE PLAN
- SEE PLAN
- SEE PLAN
- SEE PLAN
- SEE PLAN
- SEE TOPOGRAPHICAL INFORMATION
- SEE TOPOGRAPHICAL INFORMATION
- SEE TOPOGRAPHICAL INFORMATION
- NO EASEMENTS REGISTERED ON TITLE

SURVEYOR'S CERTIFICATE
 HEREBY CERTIFY THAT THE BOUNDARIES OF THE SUBDIVISION AND THEIR RELATIONSHIP TO ADJOINING LANDS HAVE BEEN ACCURATELY AND CORRECTLY SHOWN.

DATE: **Nov 28/12**

Stantec Geomatics Ltd.
 ONTARIO LAND SURVEYOR
 REG. NO. 10418 (2012)



RC[338r]

LOT 12
 CONCESSION 4 (MARCH)
 PIN 04527-0839

NOTE: THIS DATA IS COMPILED FROM OFFICE RECORDS OF STANTEC GEOMATICS LTD. AND HAS NOT BEEN VERIFIED BY FIELD MEASUREMENTS. ALL DISTANCES ARE APPROXIMATE. TO BE VERIFIED BY FINAL REGISTERED PLANS.