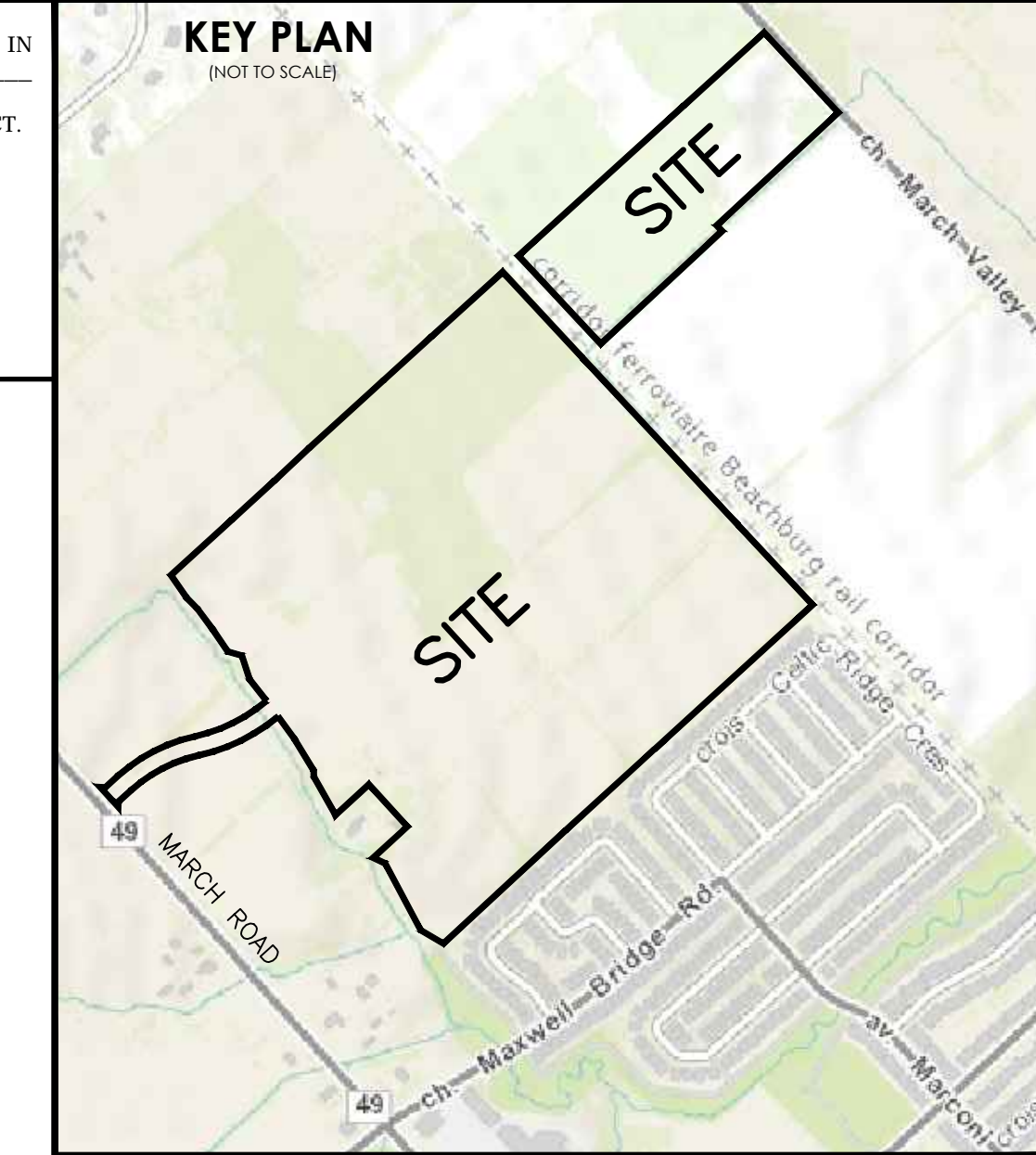


SUBJECT TO THE CONDITIONS, IF ANY, SET FORTH IN OUR LETTER DATED 20... THIS DRAFT PLAN IS APPROVED BY THE CITY OF OTTAWA UNDER SECTION 51 OF THE PLANNING ACT. THIS... DAY OF ... 20...

DERICK MOODIE, MANAGER  
DEVELOPMENT REVIEW WEST  
PLANNING, INFRASTRUCTURE AND ECONOMIC  
DEVELOPMENT DEPARTMENT, CITY OF OTTAWA



### DRAFT PLAN OF SUBDIVISION

#### PART OF LOT 12 CONCESSION 4 (GEOGRAPHIC TOWNSHIP OF MARCH) CITY OF OTTAWA

Scale 1:1250

METRIC CONVERSION  
DISTANCES AND COORDINATES SHOWN ON THIS PLAN ARE IN METRES AND CAN BE CONVERTED TO FEET BY DIVIDING BY 0.3048

GRID SCALE CONVERSION  
DISTANCES ARE GROUND AND CAN BE CONVERTED TO GRID BY MULTIPLYING BY THE COMBINED SCALE FACTOR OF 0.99992

BEARING NOTE  
BEARINGS ARE DERIVED FROM PLAN 48-31357 PREPARED BY OTHERS.

INFORMATION REQUIRED UNDER SECTION 51 OF THE PLANNING ACT R.S.O. 1990

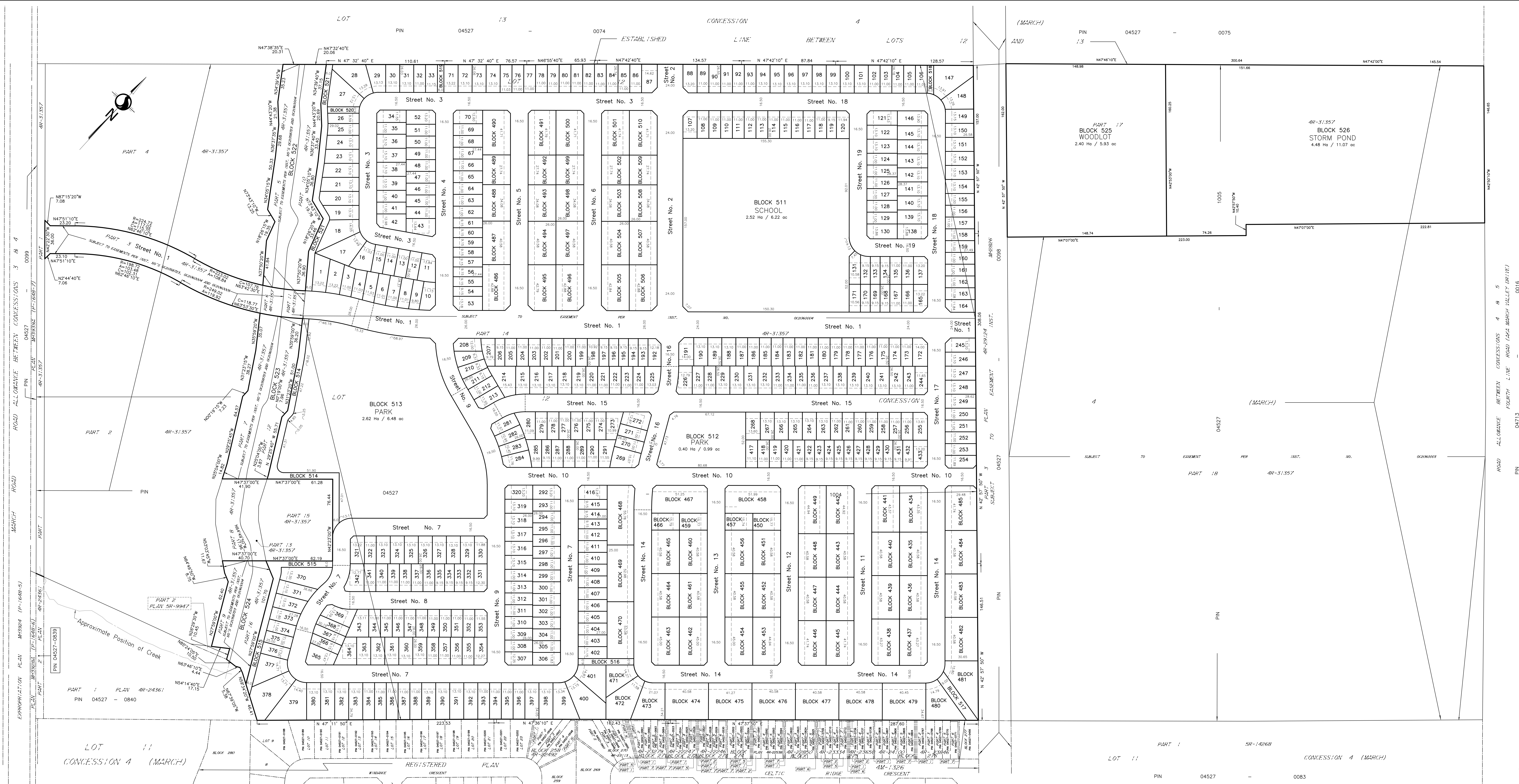
- a. SEE PLAN
- b. SEE PLAN
- c. SEE PLAN
- d. SEE PROPOSED LAND USE SCHEDULE (ABOVE)
- e. SEE PLAN
- f. SEE PLAN
- g. CITY WATER AVAILABLE
- h. SEE SOIL REPORT
- i. SEE TOPOGRAPHICAL INFORMATION
- j. ALL CITY SERVICES AVAILABLE
- k. NO EASEMENTS REGISTERED ON TITLE

SURVEYOR'S CERTIFICATE  
I HEREBY CERTIFY THAT THE BOUNDARIES OF THE SUBJECT LANDS AND THEIR RELATIONSHIP TO ADJOINING LANDS HAVE BEEN ACCURATELY AND CORRECTLY SHOWN.

DATE \_\_\_\_\_  
BRIAN J. WEBSTER  
ONTARIO LAND SURVEYOR

Stantec  
CANADA LAND SURVEYORS  
ONTARIO LAND SURVEYORS  
1201 CLIVE AVENUE, SUITE 400  
OTTAWA, ONTARIO, K2C 3C4  
TEL: 416.724.4200 FAX: 416.722.7799  
stantec.com

DRAWN: CEC CHECKED: PNE: FF PROJECT No.: 16161807-13



NOTE:  
THE PLAN DATA IS COMPILED FROM OFFICE RECORDS OF STANTEC GEOMATICS LTD. AND HAS NOT BEEN VERIFIED BY FIELD MEASUREMENTS. ALL DISTANCES ARE APPROXIMATE. TO BE VERIFIED BY FINAL REGISTERED PLANS.