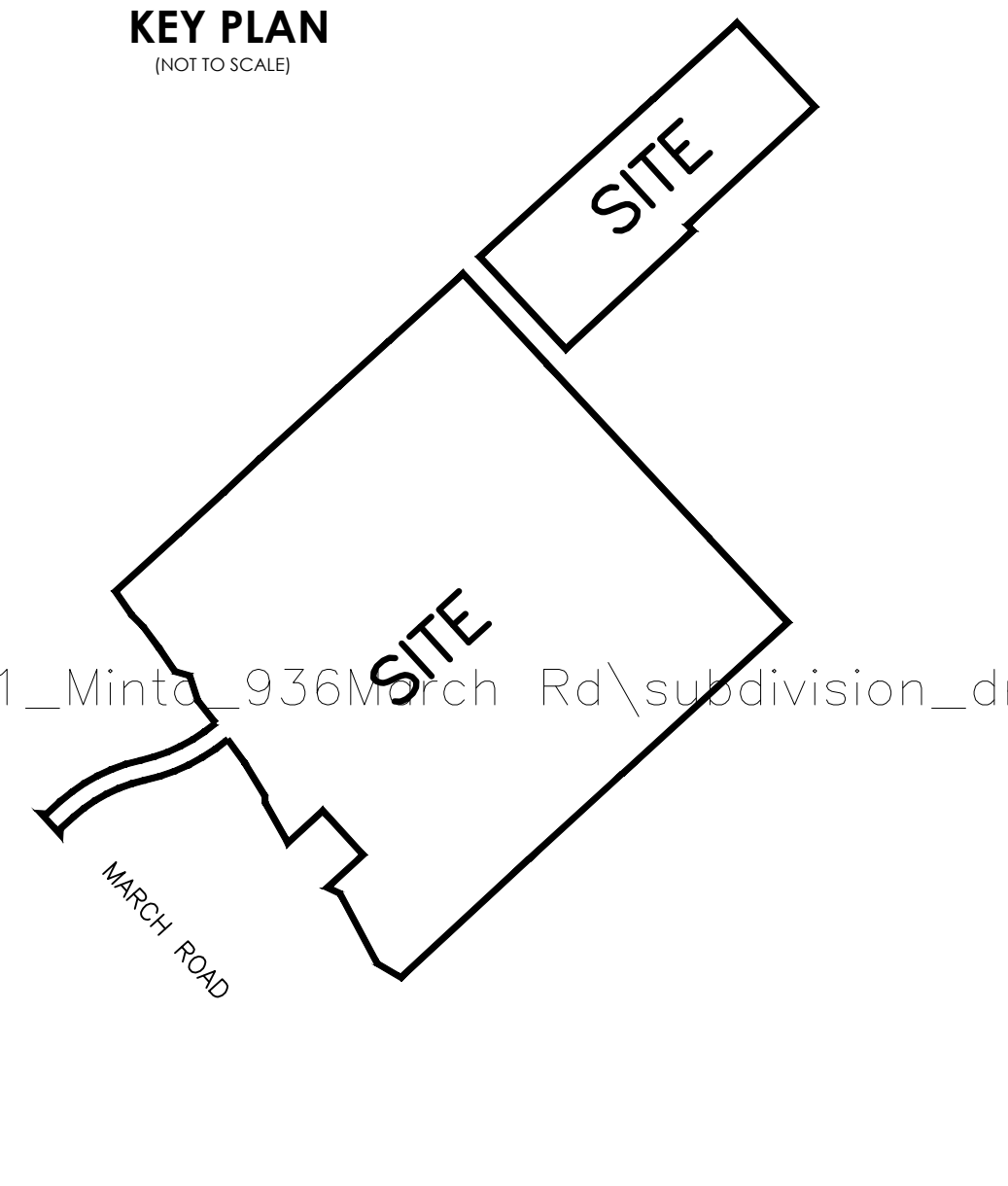


SUBJECT TO THE CONDITIONS, IF ANY, SET FORTH IN OUR LETTER DATED 20 ____ THIS DRAFT PLAN IS APPROVED BY THE CITY OF OTTAWA UNDER SECTION 51 OF THE PLANNING ACT. THIS ____ DAY OF ____ 20 ____

DERRICK MOODIE, MANAGER
DEVELOPMENT REVIEW-WEST
PLANNING, INFRASTRUCTURE AND ECONOMIC
DEVELOPMENT DEPARTMENT, CITY OF OTTAWA



DRAFT PLAN OF SUBDIVISION
PART OF LOT 12
CONCESSION 4
(GEOGRAPHIC TOWNSHIP OF MARCH)
CITY OF OTTAWA

Scale 1:1250

METRIC CONVERSION
DISTANCES AND COORDINATES SHOWN ON THIS PLAN ARE IN METRES AND CAN BE CONVERTED TO FEET BY DIVIDING BY 0.3048

GRID SCALE CONVERSION
DISTANCES ARE GROUND AND CAN BE CONVERTED TO GRID BY MULTIPLYING BY THE COMBINED SCALE FACTOR OF 0.99992

BEARING NOTE
BEARINGS ARE DERIVED FROM PLAN 4R-31357 PREPARED BY OTHERS.

INFORMATION REQUIRED UNDER SECTION 51 (17) OF THE PLANNING ACT R.S.O. 1990

- SEE PLAN
- SEE PLAN
- SEE PLAN
- SEE PROPOSED LAND USE SCHEDULE (ABOVE)
- SEE PLAN
- SEE PLAN
- SEE PLAN
- SEE PLAN
- CITY WATER AVAILABLE
- SEE SOIL REPORT
- SEE TOPOGRAPHICAL INFORMATION
- ALL CITY SERVICES AVAILABLE
- NO EASEMENTS REGISTERED ON TITLE

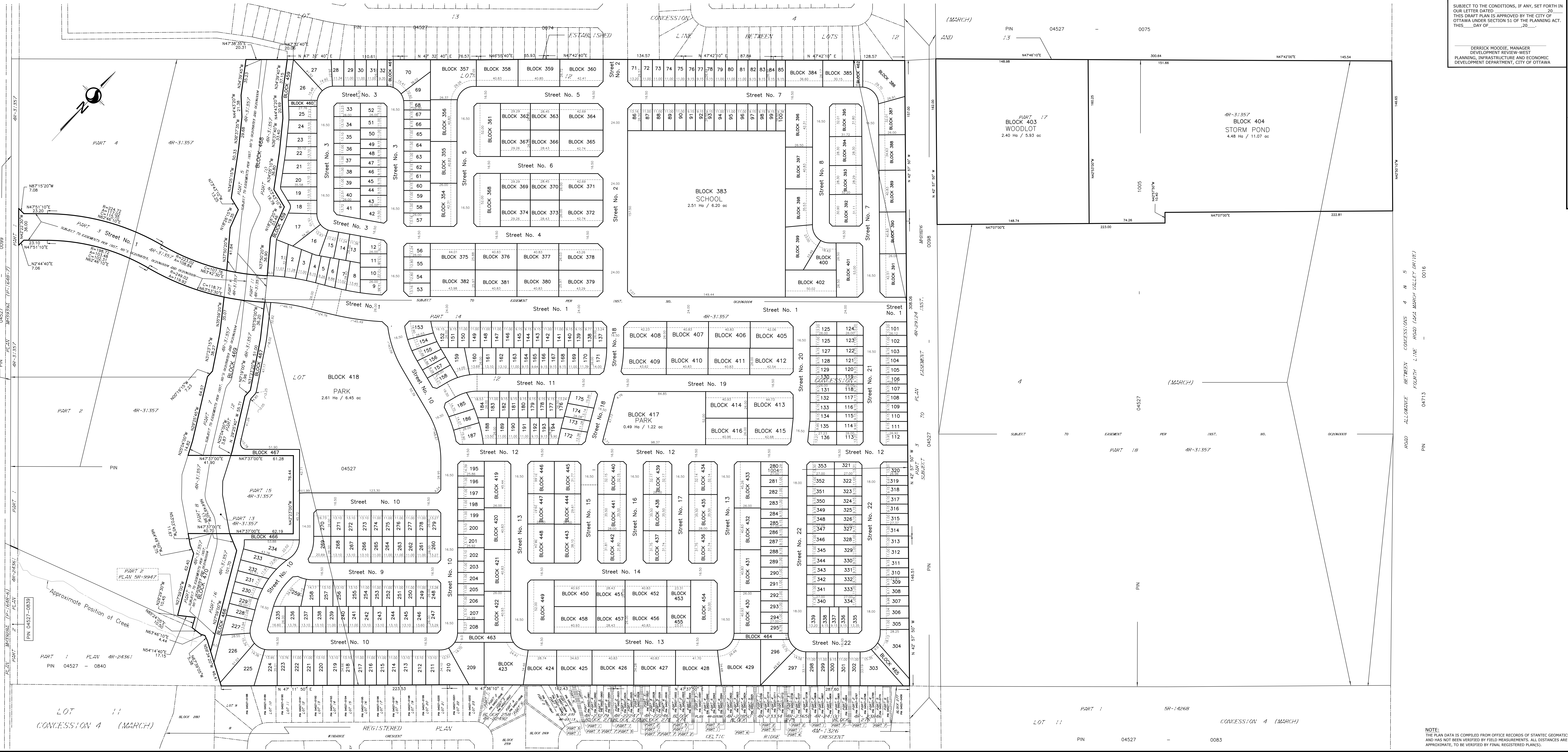
SURVEYOR'S CERTIFICATE
I HEREBY CERTIFY THAT THE BOUNDARIES OF THE SUBJECT LANDS AND THEIR RELATIONSHIP TO ADJOINING LANDS HAVE BEEN ACCURATELY AND CORRECTLY SHOWN.

DATE _____

BRIAN J. WEBSTER
ONTARIO LAND SURVEYOR

Stantec Geomatics Ltd.
CANADA LAND SURVEYORS
ONTARIO LAND SURVEYORS
1331 CLIVE AVENUE, SUITE 400
OTTAWA, ONTARIO, K2C 3G4
TEL: (416) 724-4400 FAX: (416) 724-2299
stantec.com

DRAWN: CEC CHECKED: PJA PP PRODUCT NO.: 16161387131



NOTE: THE PLAN DATA IS COMPILED FROM OFFICE RECORDS OF STANTEC GEOMATICS LTD. AND HAS NOT BEEN VERIFIED BY FIELD MEASUREMENTS. ALL DISTANCES ARE APPROXIMATE, TO BE VERIFIED BY FINAL REGISTERED PLAN(S).