

Distances shown on this plan are ground distances and can be converted to grid distances by multiplying by the combined scale factor of 0.999943.

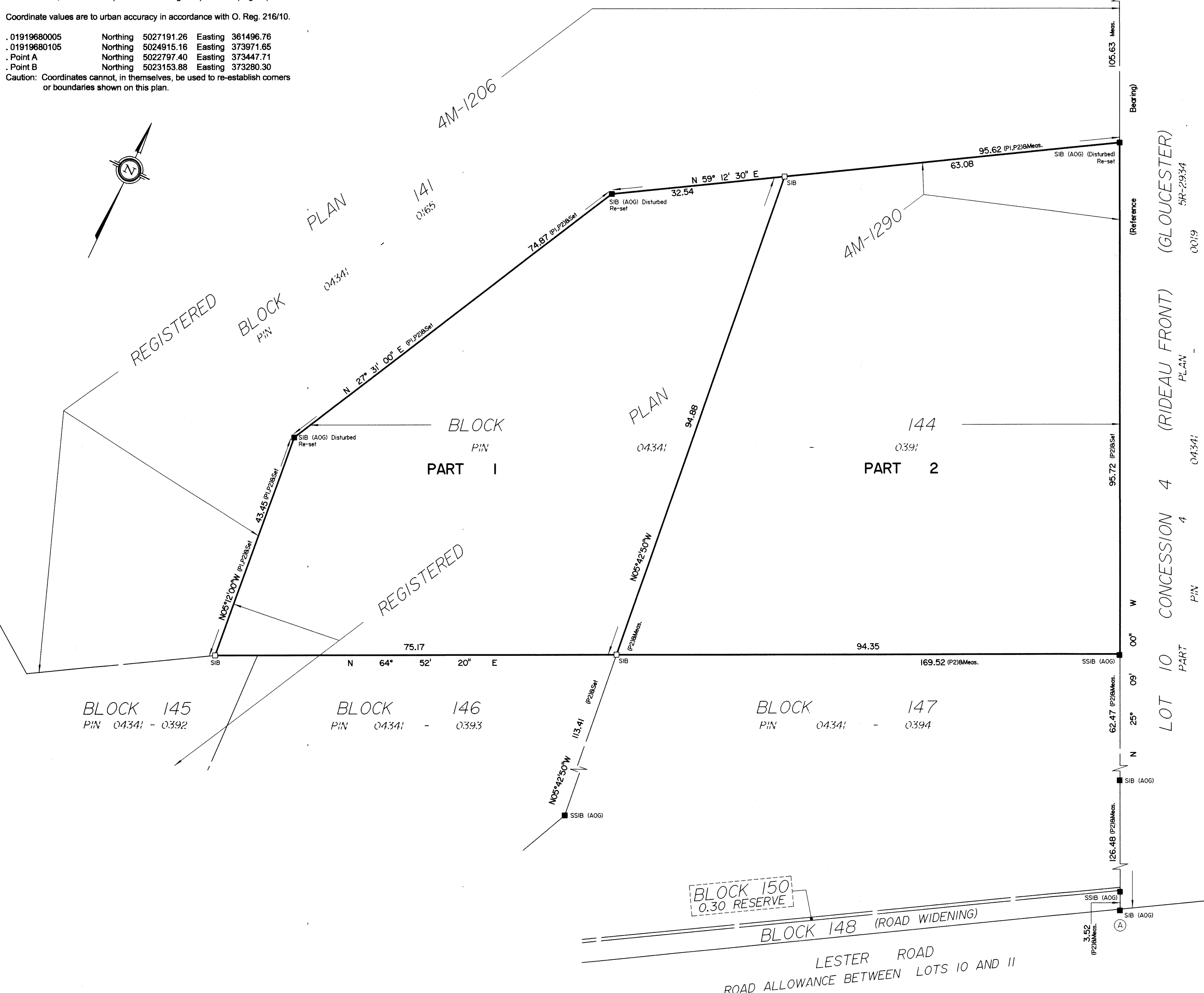
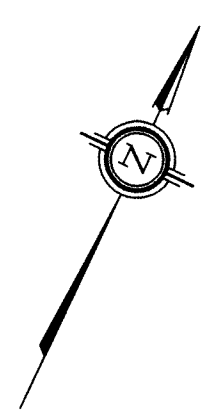
Bearings are grid, derived from Can-Net 2016 Real Time Network GPS observations on reference points A and B, shown hereon, having a bearing of N25°09'00"W and are referenced to Specified Control Points 01919680005 and 01919680105, MTM Zone 9 (76°30' West Longitude) NAD-83 (original).

Coordinates are derived from Can-Net 2016 Real Time Network GPS observations referenced to Specified Control Points 01919680005 and 01919680105, MTM Zone 9 (76°30' West Longitude) NAD-83 (original).

Coordinate values are to urban accuracy in accordance with O. Reg. 216/10.

01919680005 Northing 5027191.26 Easting 361496.76
 01919680105 Northing 5024915.16 Easting 373971.65
 Point A Northing 5022797.40 Easting 373447.71
 Point B Northing 5023153.88 Easting 373280.30

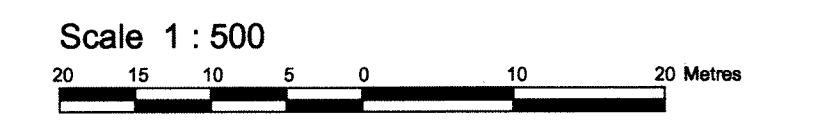
Caution: Coordinates cannot, in themselves, be used to re-establish corners or boundaries shown on this plan.



I REQUIRE THIS PLAN TO BE DEPOSITED UNDER THE LAND TITLES ACT.
 DATE: April 14/18
 RECEIVED AND DEPOSITED DATE: April 5/18
 W. Andrew Shepley
 ONTARIO LAND SURVEYOR
 A. Ward
 LAND REGISTRAR FOR THE LAND TITLES DIVISION OF OTTAWA-CARLETON NO. 4.

SCHEDULE			
PART	BLOCK	REGISTERED PLAN	PIN
1	ALL OF	4M-1290	ALL OF
2	144		PIN 04341-0391

PLAN OF SURVEY OF
BLOCK 144
REGISTERED PLAN 4M-1290
CITY OF OTTAWA
 Surveyed by Annis, O'Sullivan, Vollebakk Ltd.



Metric
 DISTANCES SHOWN ON THIS PLAN ARE IN METRES AND CAN BE CONVERTED TO FEET BY DIVIDING BY 0.3048

Surveyor's Certificate
 I CERTIFY THAT:
 1. This survey and plan are correct and in accordance with the Surveys Act, the Surveyors Act, the Land Titles Act and the regulations made under them.
 2. The survey was completed on the 16th day of March, 2018.
 Date: March 28/18
 Andrew Shepley
 Ontario Land Surveyor

- Notes & Legend
- Denotes Survey Monument Planted
 - Denotes Survey Monument Found
 - SIB Standard Iron Bar
 - SSIB Short Standard Iron Bar
 - IB Iron Bar
 - (WIT) Witness
 - (AOG) Annis, O'Sullivan, Vollebakk Ltd.
 - Meas. Measured
 - (P1) Registered Plan 4M-1206
 - (P2) Registered Plan 4M-1290

ANNIS, O'SULLIVAN, VOLLEBEKK LTD.
 14 Concourse Gate, Suite 500
 Nepean, Ont. K2E 7S6
 Phone: (613) 727-0850 / Fax: (613) 727-1079
 Email: Nepean@aosvlltd.com
 Ontario Land Surveyors Job No. 18487-18 Volcraft Bk144 4M-1290 R DI AE

Y:\VALLECAMPT\18487-18 Volcraft Bk144 4M-1290 R DI.dwg, 04/04/2018 3:51:22 PM