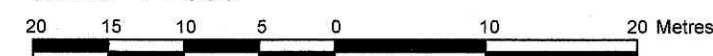


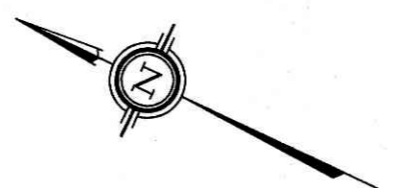
**DRAFT PLAN OF SUBDIVISION OF
PART OF LOT 10
CONCESSION 4 (RIDEAU FRONT)**
Geographic Township of Gloucester
CITY OF OTTAWA

Prepared by Annis, O'Sullivan, Vollebek Ltd.

Scale 1 : 500



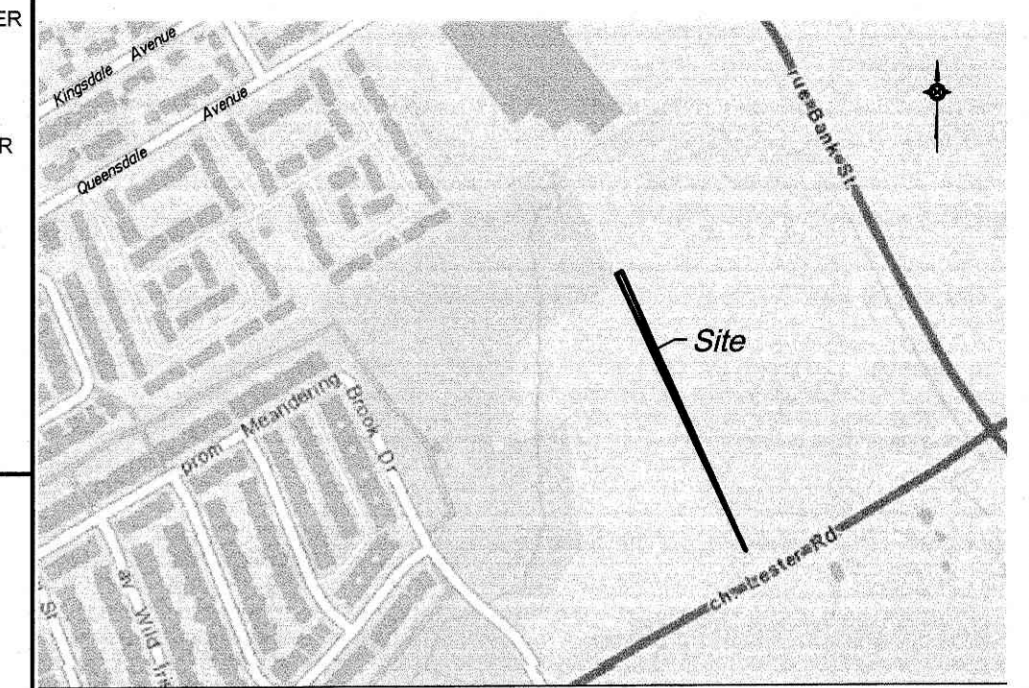
Metric
DISTANCES SHOWN ON THIS PLAN ARE IN METRES AND
CAN BE CONVERTED TO FEET BY DIVIDING BY 0.3048



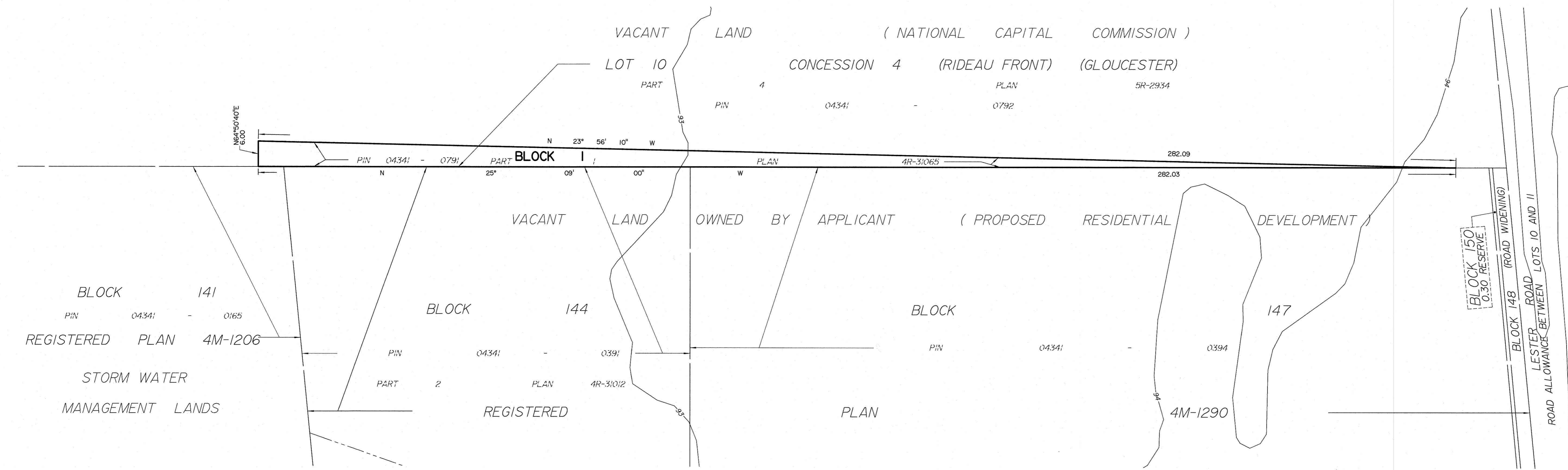
SUBJECT TO THE CONDITIONS, IF ANY, SET FORTH IN OUR LETTER DATED _____

THIS DRAFT PLAN IS APPROVED BY THE CITY OF OTTAWA UNDER SECTION 51 OF THE PLANNING ACT.
THIS _____ DAY OF _____, 20__

DON HERWEYER, MCIP RPP, MANAGER
DEVELOPMENT REVIEW-SOUTH
PLANNING, INFRASTRUCTURE AND ECONOMIC
DEVELOPMENT DEPARTMENT, CITY OF OTTAWA



KEY MAP
NOT TO SCALE



SURVEYOR'S CERTIFICATE

I CERTIFY THAT:
The boundaries of the lands to be subdivided and their relationship to adjoining lands have been accurately and correctly shown.

Jan 2, 2019
Date
Andre Roy
Signature
Andre Roy
ONTARIO LAND SURVEYOR

OWNER'S CERTIFICATE

This is to certify that I am the owner / agent of the lands to be subdivided and that this plan was prepared in accordance with my instructions.

Dec 20, 2018
Date
Jean-Guy Rivard
Signature
Jean-Guy Rivard
Valecraft Homes Ltd.
I have the authority to bind the corporation

ADDITIONAL INFORMATION REQUIRED UNDER SECTION 51-17 OF THE PLANNING ACT

- (a) see plan
- (b) see plan
- (c) see plan
- (d) multi-family residential housing
- (e) see plan
- (f) see plan
- (g) see plan
- (h) City of Ottawa
- (i) see soils report
- (j) see plan
- (k) sanitary, storm sewers, municipal water, bell, hydro, cable and gas to be available
- (l) see plan

ANNIS, O'SULLIVAN, VOLLEBEK LTD.
14 Concourse Gate, Suite 500
Nepean, Ont. K2E 7S6
Phone: (613) 727-0850 / Fax: (613) 727-1079
Email: Nepean@aosvl.com

Ontario Land Surveyors Job No. 18104-18 Valecraft Pt Lt 10 C4 RF GL DPS DI