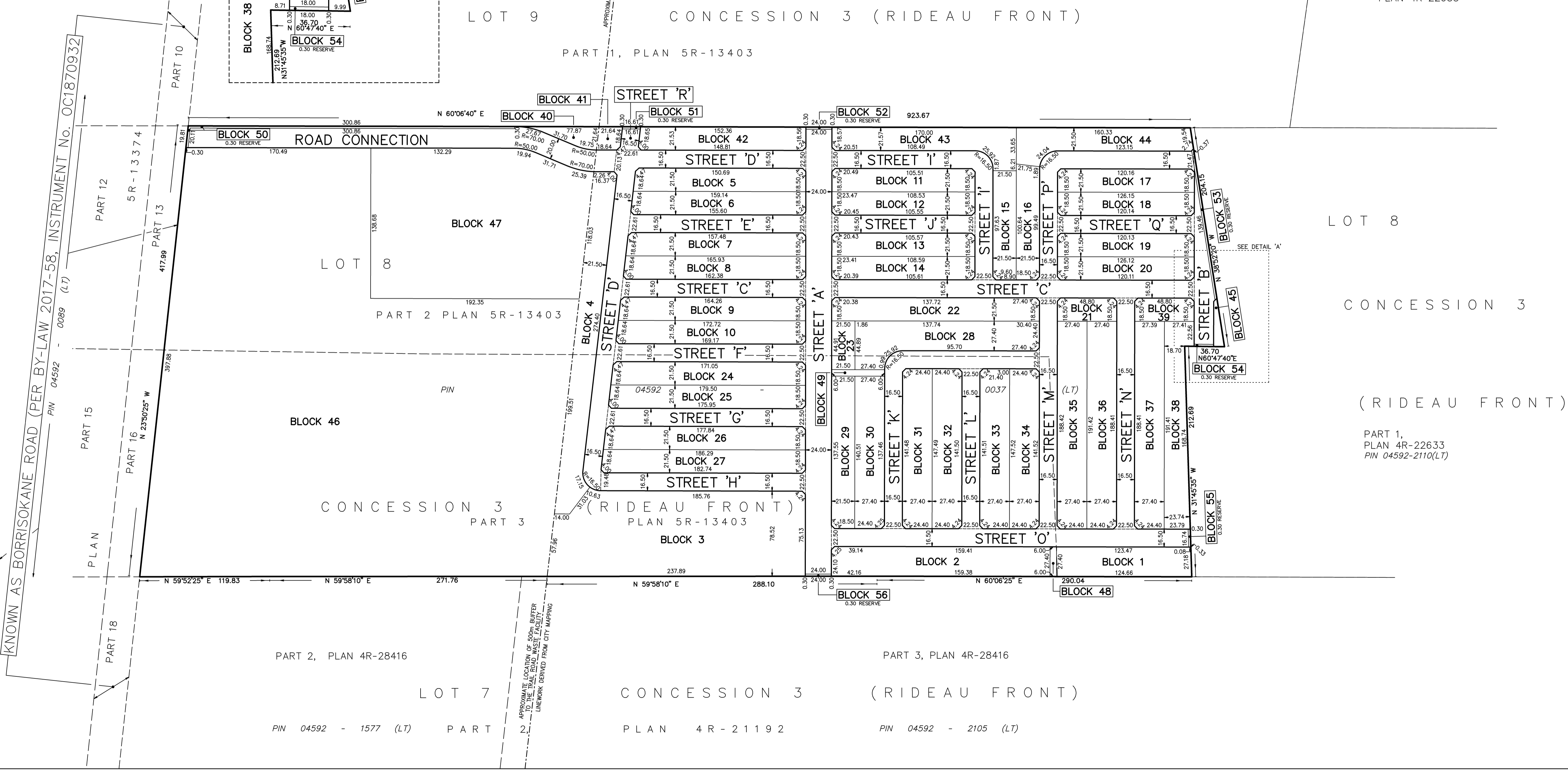
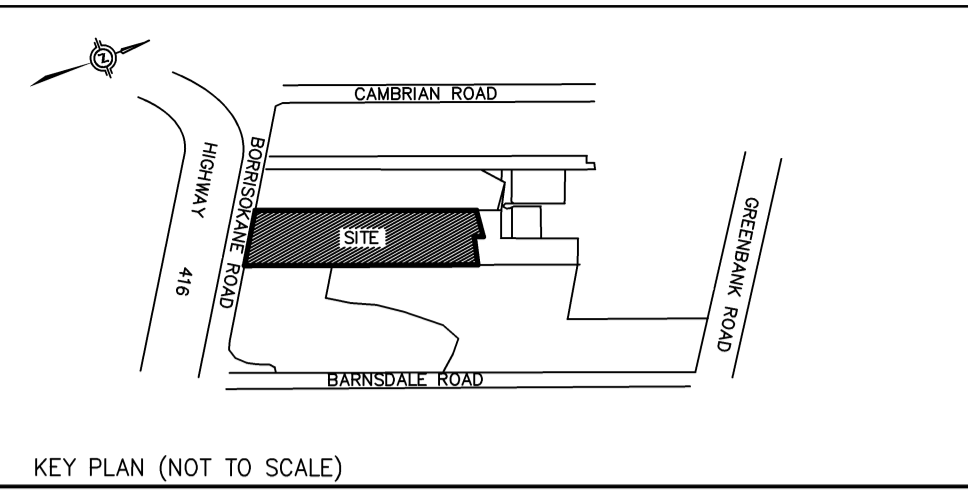


SUBJECT TO THE CONDITIONS, IF ANY, SET FORTH IN OUR LETTER DATED THIS DRAFT PLAN IS APPROVED BY THE CITY OF OTTAWA UNDER SECTION 51 OF THE PLANNING ACT THIS DAY OF, 2019.

DON HERWEYER, MCIP RPP, ACTING MANAGER
DEVELOPMENT REVIEW, URBAN SERVICES
PLANNING AND GROWTH MANAGEMENT DEPARTMENT
PLANNING AND INFRASTRUCTURE PORTFOLIO
CITY OF OTTAWA

ADDITIONAL INFORMATION
As required under section 51(17) of the Planning Act R.S.O. 2001

(a)(b)(e)(f)(g)(j) and (l) - As shown on this Plan.
(c) - As shown on this Draft and Key Plan
(d) - Land to be used in accordance with the Schedule of Land Use
(h)(k) - Full Municipal Services
(i) - Offshore Marine Deposits of clay, silty clay and silt, Bedrock Ottawa Formation, limestone



DRAFT PLAN OF SUBDIVISION OF
**PART OF LOT 8
CONCESSION 3 (RIDEAU FRONT)**
GEOGRAPHIC TOWNSHIP OF NEPEAN
NOW IN THE
CITY OF OTTAWA

SCALE 1:2000
50 0 50 100 150 metres


J.D. BARNES LIMITED
METRIC DISTANCES AND/OR COORDINATES SHOWN ON THIS PLAN ARE IN METRES AND CAN BE CONVERTED TO FEET BY DIVIDING BY 0.3048.

OWNER'S CERTIFICATE
BARRHAVEN CONSERVANCY EAST INC., BEING THE REGISTERED OWNER OF THE SUBJECT LANDS HEREBY AUTHORIZES J. D. BARNES LIMITED TO PREPARE AND SUBMIT THIS DRAFT PLAN OF SUBDIVISION FOR APPROVAL.

DATE _____ FRANK CAIRO
PRESIDENT
(I HAVE THE AUTHORITY TO BIND THE CORPORATION)

SURVEYOR'S CERTIFICATE
I HEREBY CERTIFY THAT THE BOUNDARIES OF THE LAND TO BE SUBDIVIDED ARE CORRECTLY SHOWN.

DATE _____ C.M. FOX
ONTARIO LAND SURVEYOR



J.D. BARNES LIMITED
SURVEYING MAPPING GIS
LAND INFORMATION SPECIALISTS
2430 DON REID DRIVE, SUITE 204, OTTAWA, ON K1H 1E1
T: (613) 731-7244 F: (613) 731-8955 www.jdbarnes.com

DRAWN BY: EC	CHECKED BY: CF	REFERENCE NO.: 18-10-145-00 DRAFT
		DATED: 05/09/19
FILE: G:\18-10-145\00\Drawing\Draft_Plan\GROUND\18-10-145-00_DP_Ground.dgn		

PLOTTED: 5/13/2019