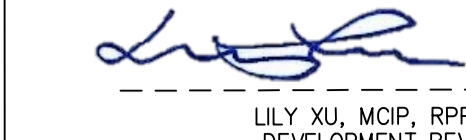
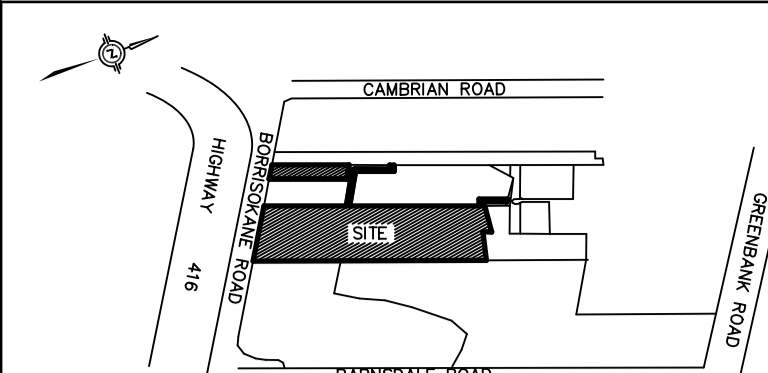


SUBJECT TO THE CONDITIONS, IF ANY, SET FORTH IN OUR LETTER DATED NOVEMBER 21, 2019, THIS DRAFT PLAN IS APPROVED BY THE CITY OF OTTAWA UNDER SECTION 51 OF THE PLANNING ACT THIS 28th DAY OF NOVEMBER, 2019.

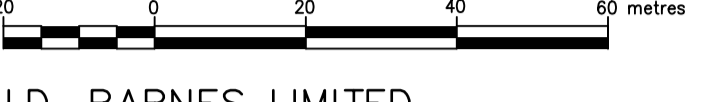

 LILY XU, MPP, RPP, MANAGER
 DEVELOPMENT REVIEW SOUTH
 PLANNING, INFRASTRUCTURE AND ECONOMIC DEVELOPMENT DEPARTMENT,
 CITY OF OTTAWA

ADDITIONAL INFORMATION
As required under section 51(17) of the Planning Act R.S.O. 2001

(a)(b)(c)(d)(e) and (f) - As shown on this Plan.
 (g) - As shown on this Draft and Key Plan
 (h) - Land to be used in accordance with the Schedule of Land Use
 (i) - Full Municipal Services
 (j) - Other: Marine Deposits of clay, silt, clay and silt, Bedrock Ottawa Formation, limestone



DRAFT PLAN OF SUBDIVISION OF
**PART OF LOT 8 AND
 PART OF LOT 9
 CONCESSION 3 (RIDEAU FRONT)**
 GEOGRAPHIC TOWNSHIP OF NEPEAN
 NOW IN THE
CITY OF OTTAWA

SCALE 1 : 1000

 J.D. BARNES LIMITED
 METRIC DISTANCES AND/OR COORDINATES SHOWN ON THIS PLAN ARE IN METRES AND CAN BE CONVERTED TO FEET BY DIVIDING BY 0.3048

4M-1560
 BLOCK 175
 PLAN

PART 2, PLAN SR-23284
 PIN 04592-2107(L)

PART 1, PLAN SR-13403
 PIN 04592-0035(L)

PART 1, PLAN 4R-XXXX
 PIN 04592-2108(L)

PART 1, PLAN 4R-XXXX
 PIN 04592-2109(L)

PART 1, PLAN 4R-XXXX
 PIN 04592-2110(L)

PART 1, PLAN 4R-XXXX
 PIN 04592-2111(L)

PART 1, PLAN 4R-XXXX
 PIN 04592-2112(L)

PART 1, PLAN 4R-XXXX
 PIN 04592-2113(L)

PART 1, PLAN 4R-XXXX
 PIN 04592-2114(L)

PART 1, PLAN 4R-XXXX
 PIN 04592-2115(L)

PART 1, PLAN 4R-XXXX
 PIN 04592-2116(L)

PART 1, PLAN 4R-XXXX
 PIN 04592-2117(L)

PART 1, PLAN 4R-XXXX
 PIN 04592-2118(L)

PART 1, PLAN 4R-XXXX
 PIN 04592-2119(L)

PART 1, PLAN 4R-XXXX
 PIN 04592-2120(L)

PART 1, PLAN 4R-XXXX
 PIN 04592-2121(L)

PART 1, PLAN 4R-XXXX
 PIN 04592-2122(L)

PART 1, PLAN 4R-XXXX
 PIN 04592-2123(L)

PART 1, PLAN 4R-XXXX
 PIN 04592-2124(L)

PART 1, PLAN 4R-XXXX
 PIN 04592-2125(L)

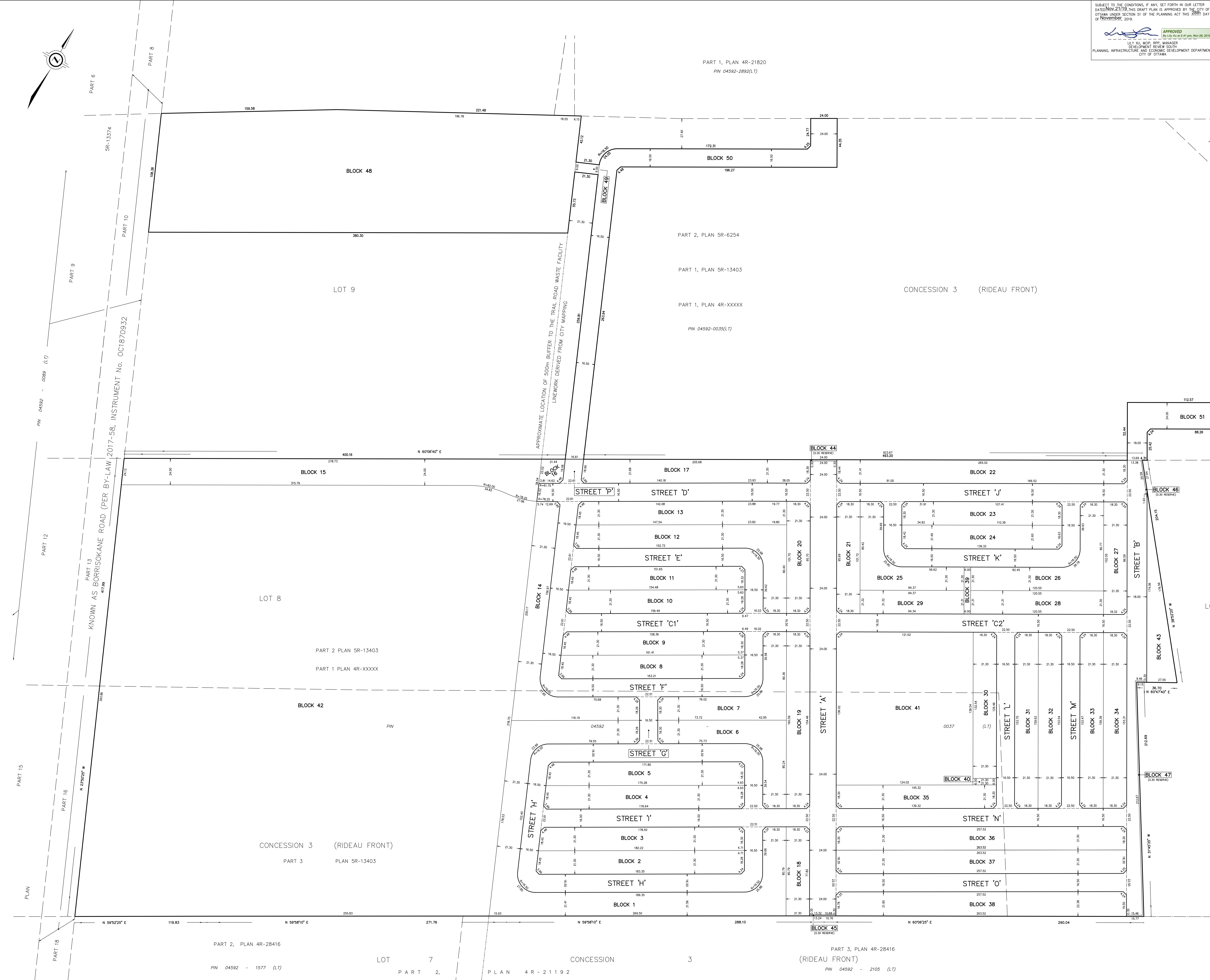
PART 1, PLAN 4R-XXXX
 PIN 04592-2126(L)

PART 1, PLAN 4R-XXXX
 PIN 04592-2127(L)

PART 1, PLAN 4R-XXXX
 PIN 04592-2128(L)

PART 1, PLAN 4R-XXXX
 PIN 04592-2129(L)

PART 1, PLAN 4R-XXXX
 PIN 04592-2130(L)



OWNER'S CERTIFICATE

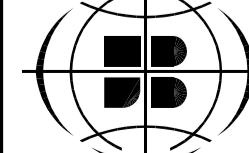
CARAVAN BRAZEAU DEVELOPMENT CORPORATION BEING THE REGISTERED OWNER OF THE SUBJECT LANDS HEREBY AUTHORIZES J. D. BARNES LIMITED TO PREPARE AND SUBMIT THIS DRAFT PLAN OF SUBDIVISION FOR APPROVAL.

DATE _____ FRANK CARO
 PRESIDENT
 (I HAVE THE AUTHORITY TO BIND THE CORPORATION)

SURVEYOR'S CERTIFICATE

I HEREBY CERTIFY THAT THE BOUNDARIES OF THE LAND TO BE SUBDIVIDED ARE CORRECTLY SHOWN.

DATE _____
 ONTARIO LAND SURVEYOR

 **J.D. BARNES** SURVEYING
 MAPPING
 LAND INFORMATION SPECIALISTS
 340 DON RED DRIVE, SUITE 304, OTTAWA, ON K1H 1E3
 T: (613) 775-2266 F: (613) 775-4897 www.jdbarnes.com

DRAWN BY: NS CHECKED BY: CF REFERENCE NO: 18-10-145-00 DRAFT
 FILE: 0-18-10-145-00.dwg (D:\Proj\SP180923\0-18-10-145-00_Sp180923.dwg)
 DATE: 06/05/20
 PLOT#: 9/27/2019