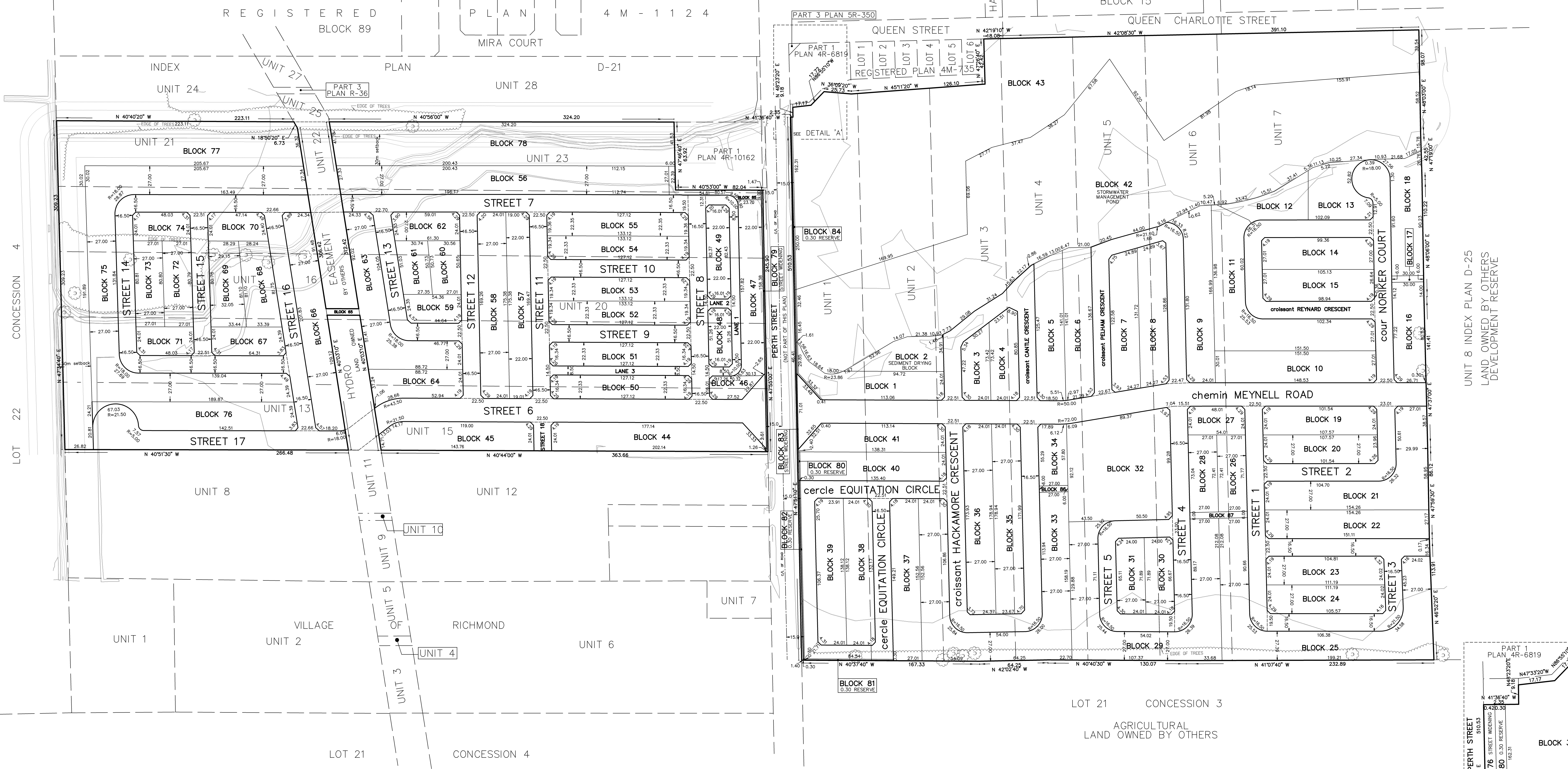
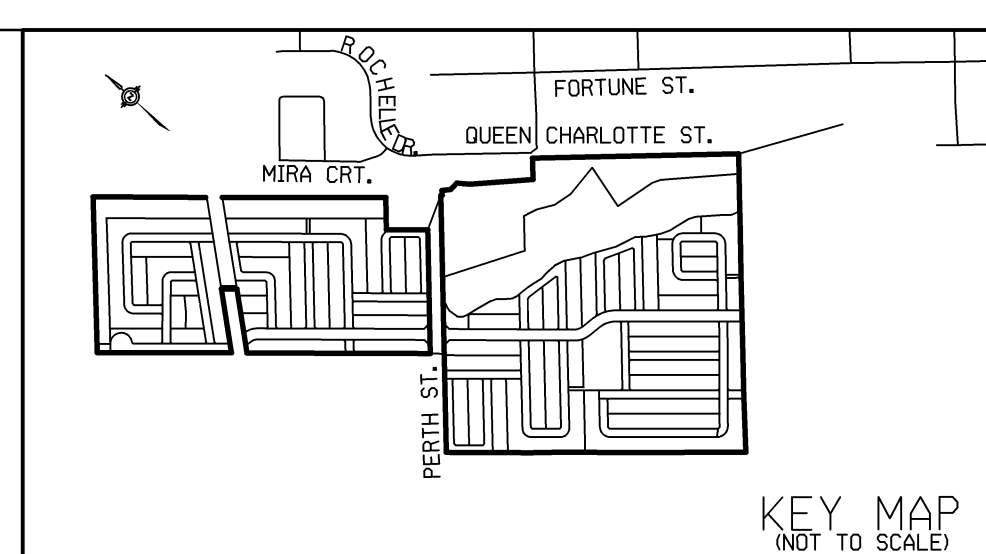


SUBJECT TO THE CONDITIONS, IF ANY SET FORTH IN OUR LETTER DATED _____ 20 _____ THIS DRAFT PLAN IS APPROVED BY THE ONTARIO MUNICIPAL BOARD UNDER SECTION 51 OF THE PLANNING ACT, THIS _____ DAY OF _____ 20 _____

ATTACHMENT No. 1



DRAFT PLAN OF SUBDIVISION
UNITS 13, 15, 16, 19, 20, 21
AND PART OF UNIT 14, 17 AND 23
INDEX PLAN 4D-21
PART OF UNITS 1, 2 AND 3
AND UNITS 4, 5, 6 AND 7
INDEX PLAN 4D-25

(GEOGRAPHIC TOWNSHIP OF GOULBORN)
 NOW IN THE
CITY OF OTTAWA

SCALE 1 : 1500

J.D. BARNES LIMITED
 METRIC DISTANCES AND/OR COORDINATES SHOWN ON THIS PLAN ARE IN METRES AND CAN BE CONVERTED TO FEET BY DIVIDING BY 0.3048.

ADDITIONAL INFORMATION
 As required under section 51(17) of the Planning Act R.S.O. 2001

(a)(b)(c)(d)(e)(f)(g)(h)(i) - As shown on this Plan.
 (c) - As shown on this Draft and Key Plan
 (d) - Land to be used in accordance with the Schedule of Land Use.
 (h)(k) - Full Municipal Services
 (i) - Offshore Marine Deposits of clay, silty clay and silt, Bedrock Ottawa Formation, limestone

OWNER'S AUTHORIZATION
 Richmond Village North Limited and Richmond Village South Limited, being the registered owners of the subject lands hereby authorizes J. D. Barnes Limited to prepare and submit this draft plan of subdivision for approval.

DATE _____ FRANK CAIRO, PRESIDENT

SURVEYOR'S CERTIFICATE
 I CERTIFY THAT:
 The boundaries of the lands to be subdivided as shown on this Plan and their relationship to the adjacent lands are correctly and accurately shown.

DATE _____ George Zervos O.L.S.
 J.D. BARNES LIMITED

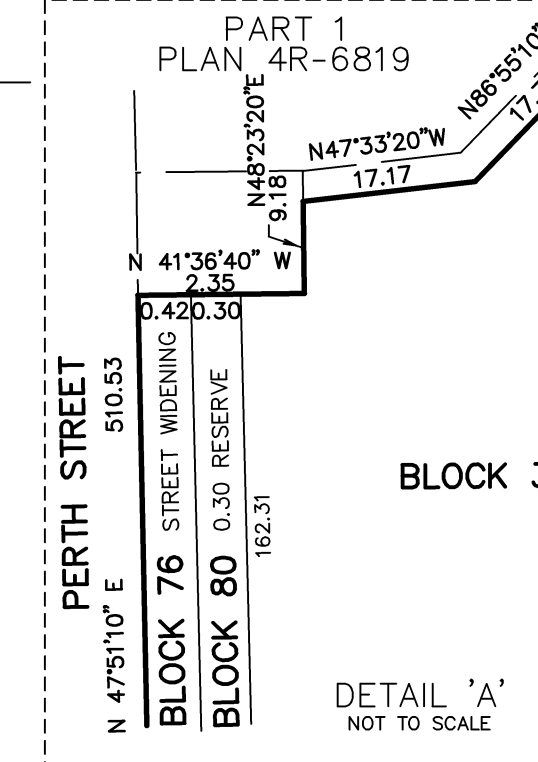
Schedule of Land Use		
Land Use	Lots/Blocks	Units (AREAS)
RESIDENTIAL	BLOCKS 1, 3 to 11, 13 to 16, 18 to 31, 33 to 41, 44 to 64, 66 to 76	25.3
PARK	BLOCK 32	1.0
EXISTING RIGHT OF WAY	BLOCK 65	0.02
DRAINAGE CHANNEL	BLOCK 77, 78	3.0
OPEN SPACE	BLOCK 43, 85	5.3
POND	BLOCK 42	5.9
SEDIMENT DRYING AREA	BLOCKS 2, 12	0.4
STREET WIDENING	BLOCKS 79, 80	0.1
WALKWAYS	BLOCKS 17, 86, 87	0.1
0.30 RESERVES	BLOCKS 81, 82, 83, 84	0.02
LANES	LANE 1, 2, 3	0.3
STREETS	cour NORRIKER COURT, croissant REYNARD CRESCENT, chemin MEYNELL ROAD, croissant PELHAM CRESCENT, croissant CANITE CRESCENT, cercle EQUITATION CIRCLE, STREET 1	11.5
Total		52.9

NOTES
 RWCA Regulatory Flood Limit per Floodplain Mapping Report for the Van Goal and Arbuckle Drains in the Village of Richmond, November, 2009

NOTES TREE

GRABB BY: EC CHECKED BY: CF REFERENCE NO: 10-10-314-00 (DRAFT)
 DATED: 03/19/19
 FILE: G:\10-10-314\00\Drawings\Draft_Plan\mtd_DP31400ground.dgn PLOTTED: 3/19/2019

UNIT 8 INDEX PLAN D-25
 LAND OWNED BY OTHERS
 DEVELOPMENT RESERVE



LOT 22 CONCESSION 4

LOT 21 CONCESSION 3

LOT 21 CONCESSION 4

AGRICULTURAL LAND OWNED BY OTHERS