

Archaeological  
Services

Geotechnical  
Engineering

Environmental  
Engineering

Hydrogeology

Geological  
Engineering

Materials Testing

Building Science

# patersongroup

**Original Report**

## **Stage 3 Archaeological Assessment**

3288 Greenbank Rd.  
Concession 3 R.F., Part Lot 14,  
Geographic Township of Nepean  
City of Ottawa, Ontario

**Prepared For**

Nepean Town Center Development Corporation  
Care of  
Troy van Haastreht  
Caivan Development Corporation  
5504 Wicklow Drive, Manotick  
K4M 1C4  
Phone: (613) 692-6400

**September, 2013**

**(Submitted for review September 20, 2013)**

PIF: P378-007-2013

Nadine Kopp, MA (Licence Number P378)

### **Paterson Group Inc.**

Consulting Engineers  
154 Colonnade Road South  
Ottawa (Nepean), Ontario  
Canada K2E 7J5

Tel: (613) 226-7381  
Fax: (613) 226-6344  
[www.patersongroup.ca](http://www.patersongroup.ca)

Report: PA1009-2

---

## 1.0 Executive Summary

Paterson Group, on behalf of the Nepean Town Center Development Corporation c/o Caivan, undertook a Stage 3 archaeological assessment of the site located during the Stage 2 archaeological assessment at 3288 Greenbank Rd, Concession 3 R.F. Part Lot 14, in the geographic township of Nepean. Pedestrian survey and test unit excavation during the Stage 2 archaeological assessment revealed a scatter of historic Euro-Canadian artifacts to the north, south, and west of the historic farmhouse. The majority of the recovered material dated from the mid-late 19<sup>th</sup> century, with little material suggesting a post 1900 date. The combination of domestic artifacts, structural material, and agricultural hardware suggested a scatter of plough distributed artifacts with little contextual stratigraphic deposition. Nonetheless, the recovered material exhibited sufficient cultural significance to warrant a Stage 3 assessment, based on Standard 1.c. of Section 2.2 of the Standards and Guidelines for Consultant Archaeologists (MTCS 2011). The site was registered with the MTCS as BhFw-30. It was decided to name the site "Hoolahan," after the mid-19<sup>th</sup> century landowners.

The objectives of the Stage 3 investigation were to determine the extent of the archaeological site and the characteristics of the artifacts, determine the cultural heritage value, and determine the need for mitigation prior to development in accordance with the Planning Act.

The Nepean Town Centre Development Corp. is planning to develop the property into a residential development similar to subdivisions in the surrounding areas.

The Stage 3 assessment involved the excavation of 101 1 x 1m units across a 5 m grid. An additional 20 units (20% of the total) were excavated to focus on areas of interest within the site, as the level of cultural heritage value will not result in a Stage 4 recommendation (Section 3.2.3, Standard 1.3). This fieldwork was carried out over 10 days between May 13 and June 14, 2013. Weather conditions were generally sunny, with temperatures that ranged between 10 and 31° Celsius. Permission to access the property was provided by the Nepean Town Center Development Corporation (April 1, 2013).

Based on the results of this investigation it is recommended:

1. No further archaeological mitigation is required on this property prior to development. The majority of material from the site dates to the period ca. 1875-1950, and so does not exhibit sufficient cultural heritage value or interest to proceed to a Stage 4 mitigation. This requirement is outlined in Section 3.4.2, Standards 1. a-b of the *Standards and Guidelines for Consultant Archaeologists*, as most (80% or more) of the archaeologically documented occupation of the property does not predate 1870, nor is this site associated with the first generation of settlement in the area (MCTS 2011).

and

2. The Ministry of Tourism, Culture and Sport provide a letter confirming that there are no further concerns with regard to alterations to archaeological sites for the property as delineated in pink Map 1.

**2.0 Table of Contents**

1.0 Executive Summary ..... i

2.0 Table of Contents ..... ii

3.0 Project Personnel ..... 1

4.0 Project Context ..... 2

5.0 Field Methods ..... 3

6.0 Record of Finds ..... 4

    6.1 Excavations ..... 4

    6.2 Finds ..... 5

        6.2.1 Household/ Domestic ..... 7

        6.2.2 Structural ..... 9

        6.2.3 Faunal ..... 9

        6.2.4 Lighting/ Heating ..... 10

        6.2.5 Agricultural ..... 10

        6.2.6 Unidentified ..... 10

        6.2.7 Personal ..... 10

        6.2.8 Modern/ Intrusive ..... 11

        6.2.9 Communication ..... 11

        6.2.10 Firearms/ Hunting ..... 11

7.0 Analysis and Conclusions ..... 12

8.0 Recommendations ..... 13

9.0 Advice on Compliance with Legislation ..... 14

10.0 Closure ..... 15

11.0 Bibliography and Sources ..... 16

12.0 Images ..... 19

13.0 Maps ..... 29

14.0 Appendix A: Artifact Catalogue ..... 33

15.0 Appendix B: Photographic Catalogue ..... 62

16.0 Appendix C: Map Catalogue ..... 64

17.0 Appendix D: Document Catalogue ..... 64

### **3.0 Project Personnel**

Field Director	Nadine Kopp, MA (P378) Ben Mortimer, MA (P369)
Field Crew	Ben Mortimer, MA (P369) Nadine Kopp, MA (P378) Andrea Jackson, MA (R370) John Ratcliffe, MA (R401) Lloyd Benedict, Jr. Chris Pechie
Report Preparation	John Ratcliffe, MA (R401)
Archival Research	Nadine Kopp, MA (P378)
Artifact Processing	Andrea Jackson, MA (R370) Chris Pechie
Artifact Inventory and Analysis	John Ratcliffe, MA (R401) Nadine Kopp (P378)
GIS and Mapping	Ben Mortimer, MA (P369)

#### **4.0 Project Context**

Paterson Group was contracted by the Nepean Town Centre Development Corp. c/o Caivan to conduct a Stage 3 archaeological assessment of the historic site located on Operations 1A1, 1A2, 1A3, 1A13, and 1B during the Stage 2 assessment of 3288 Greenbank Rd., on Part Lot 14, Concession 3 R.F., in the former township of Nepean, Carleton County (Map 1). The Nepean Town Centre Development Corp. is planning to develop the property for a subdivision, and this assessment is part of the pre-submission process. This archaeological assessment has been required by the approval authority (the City of Ottawa), under the Planning Act.

As the development is in the pre-submission stage, no concept plan of the proposed development exists. The archaeological study area extent was delineated in coordination with the proponent, who confirmed the study area corresponds with the parcel extents for PIN 045950058 on the geoOttawa website.

The City of Ottawa has an archaeological management plan which was developed in 1999, *The Archaeological Resource Potential Mapping Study of the Regional Municipality of Ottawa-Carleton*. The management plan covers the Township of Nepean (Archaeological Services Inc. and Geomatics International Inc. 1999). According to the management plan, portions of the property have archaeological potential.

At the time of the archaeological assessment, the study area was owned by Xi-Nam Dam and Shan Hu Dam. Permission to access the study property was granted by the Nepean Town Center Development Corporation c/o Caivan prior to the commencement of any field work; no limits were placed on this access.

The property consists of 12.6 hectares that is characterized as a cultivated field (11.85 ha) and a private residence (0.75 ha) (Map 1). The property is relatively flat. It is located 244 m north of the Jock River, a tributary of the Rideau River. Historically, the study area has primarily been used for agricultural purposes. The majority of the area has been archaeologically assessed and determined to have no further archaeological assessment requirements as per the recommendations of the Stage 2 assessment (Paterson 2013). The Stage 3 study area is a small portion (approximately 0.3 ha) of the larger property (Map 1), mostly in the ploughed fields adjacent to the extant and currently occupied dwelling, and along the overgrown tree row edges of the field.

## **5.0 Field Methods**

A controlled surface pickup (CSP) was not undertaken immediately prior the Stage 3 excavations. This is because the field conditions had not significantly changed between the completion of the Stage 2 and the start of the Stage 3 assessment. The surface collection for the Stage 2 assessment occurred on April 22, 2013 and the excavations for the Stage 3 began May 13, 2013. Therefore a CSP was not deemed necessary as the extent of the artifact scatter was known and the site condition had not changed (i.e., there was very little new growth and surface visibility was over 80%).

The Stage 3 assessment involved the excavation of 101 1 x 1 m test units, placed on a 5 m grid, with an additional 20 1 x 1 m test units (20% of the total) placed to infill areas of interest, as the level of cultural heritage value at this site does not warrant a Stage 4 recommendation (Map 2) (Section 3.2.3, Table 3.1). Test units were placed to cover the surface scatter exposed during the Stage 2 pedestrian survey (Figures 1, 2, and 4), as well as the shovel tested lawn area behind the farmhouse (Figure 3). All test units were hand excavated to a depth of 5 cm into subsoil, and all soil was screened using 6 mm mesh. Each unit was recorded on a standardized context sheet, which included a record of at least one profile, typically the north. All recovered artifacts were collected, and their provenience recorded. All artifacts were returned to Paterson's lab facility for washing, sorting, inventory, analysis, and storage. All excavation units were backfilled upon completion.

A site datum was established during the Stage 2 assessment at the southwest corner of the addition attached to the front of the farmhouse. The position of the datum was recorded using a Garmin GPSmap 62 GPS unit, occupying the station for 3 hours and sampling to 100% confidence. Coordinates for the datum are 441637E 5012 665N (UTM Zone 18N NAD 83) with the local grid reference being 500E 491N. The excavation grid and existing site features (e.g., house, barns) was established using a Nikon DTM-322 total station.

The provenience system used for this project is based on the Paterson project number (PA1009), plus the grid coordinates of the excavation unit, followed by lot number. Thus the provenience of an artifact from Lot 1 in unit 535E 515N would be recorded as PA1009-535E 515N-1.

Photographs were taken during fieldwork in order to document field conditions (Figures 1-4), (Section 7.9.6, Standard 1.a.). A representative sample of all categories of diagnostic artifacts were also photographed (Figures 8-19) (Section 7.5.11, Standards 1-2).

Fieldwork was carried out over 10 days, between May 13 and June 14, 2013. The crew consisted of two licensed archaeologists, and four field technicians. Weather conditions were generally sunny, with temperatures ranging between 10 and 31° Celsius. Permission to access the property was granted by the Nepean Town Center Development Corporation c/o Caivan (April 1, 2013).

## **6.0 Record of Finds**

A total of 121 1 x 1 m units were excavated during the Stage 3 investigation of the Hoolahan Site (BhFw-30). These units were placed on a 5 m grid covering the Stage 2 surface scatter and positive test pits, with 20% of the units placed at infill locations within the grid, to comply with the MCTS *Standards and Guidelines* (Map 2).

All artifact dates are sourced from the Parks Canada Archaeological Resources Database (Parks Canada 2012). See Appendix A-B for artifact and photograph inventory. For mapped locations of the finds, please see the supplementary documentation. See Appendix C for the map catalogue and Appendix D for the record of field notes.

### **6.1 Excavations**

The artifact scatter at the Hoolahan Site extends primarily to the north, south, and west of the historic red brick farmhouse. A total of 17 1 x 1 m test units were placed in the ploughed field to the north of the house, in the area corresponding to sub-operation 1A13 in the Stage 2 assessment. Another 15 test units were placed in the lawn to the southwest of the house, behind the barn, which corresponds to sub-operation 1B in the Stage 2. The bulk of the test units, however, were placed in the ploughed field to the south of the farmhouse. A total of 89 units were excavated in this area, which corresponds with sub-operations 1A1-1A3 in the Stage 2 assessment. All units were backfilled upon completion.

Stratigraphy across the site is not complex. The majority of units (109, or 90% of the total) consisted solely of two lots, a plough zone over natural subsoil (Figure 4). Eight units exhibited three lots, while four units exhibited four lots each. The plough zone consists of loamy clay, generally with a Munsell colour of 10YR 3/1 (very dark gray). The plough zone ranges in depth from 10 to 55 cm deep, with an average depth of 24 cm. All units were excavated 5 cm into subsoil (Section 3.2.2, Standard 5). Subsoil at the site is clay, with a typical Munsell colour of 2.5Y 5/4 (light olive brown). The maximum depth of the test units ranged from 20 to 60 cm, with an average maximum depth of 31 cm.

Test units exhibiting more complex stratigraphy were clustered along the south edge of the modern driveway, where layers of modern driveway fill were encountered. The area of lawn to the west of the barn (sub-operation 1B in the Stage 2 assessment) also exhibited slightly more complex stratigraphy, as up to three cultural layers were encountered before reaching subsoil. These layers consist of stony fill likely related to previous laneway or barn construction, as well as a layer of grey clay overlying the subsoil.

Possible cultural features were encountered in six test units in the ploughed field to the south of the house. Plan views were recorded, but these features were not excavated (Section 3.2.2, Standard 6) as the possible information from these features was not required to inform the Stage 3 recommendations. Two of these possible features are likely large plough scars (Figure

5), while two others appear to be rodent burrows. A circular feature approximately 15 cm in diameter encountered in unit 430E 465N (Figure 6) could be a post hole. As it is roughly in line with the edge of the ploughed field, it could be the remains of a fence post. This feature could also result from modern disturbance. A local resident informed the archaeological field crew that he had often searched for artifacts on the property in the past, using a metal detector, and had removed a number of objects.

The extent of the Stage 3 excavations did not cover the entire area recommended by the Stage 2 report (see site extent on Map 2). The limit of excavation was determined in the field based upon unit yield, and context (as per Section 3.2.3 Guideline 1a. and b.). Along the entire southern edge of the site, repeated low yields were encountered. In the west, behind the barn in the area of 425E 480N, higher yields were encountered, but the context repeatedly demonstrated the deposits to be modern fill events, thus lacking cultural heritage value or interest. Furthermore, this higher yield area is bounded by large disturbances relating to the extant barn (to the east), the relic larger barn to the north, and in the west by a small drainage ditch and a ploughed field with no surface finds.

## 6.2 Finds

A total of 3,174 artifacts were recovered from the Hoolahan Site. The bulk of this material was recovered from units on the lawn to the west of the barn (formerly sub-operation 1B), and in units immediately to the south of the modern driveway. The highest yield unit was 432.5E 477.5N, in the former area, totalling 331 artifacts. The second highest yield unit, 430E 475N, with 246 artifacts, was also located in this area. Four of the next seven highest yield units, which ranged between 100 and 200 artifacts each, were also located on the lawn to the west of the barn. Table 1, below, summarizes the artifact frequency per test unit. What is immediately apparent is that the majority of artifacts from the site were recovered from only a few test units. A total of 107 test units yielded between 0 and 50 artifacts each, which represents 88% of the total units excavated. This figure includes 13 units which were completely sterile. The total of 3,174 artifacts recovered from the site does not include all intrusive modern material encountered, such as plastic fragments, wire nails, and modern lime bottle glass (Figure 19). This modern material was present in nearly every test unit. Its presence was noted in the field notes, retained, and a representative sample inventoried.

Artifacts	No. of Test Units
300+	1
200-300	1
100-200	6
50-100	6
0-50	107

**Table 1.** Artifact frequency by test unit.



The majority of the finds from the Hoolahan Site consist of glass and ceramic fragments, fasteners, agricultural hardware, and faunal material. This data is summarized in Table 2, below. A total of 1,299 glass artifacts were recovered, which represents approximately 40% of the entire sample. This consists mainly of fragments of machine made bottles and containers.

Ceramic fragments were the next most common category of material recovered at the site. The 747 ceramic fragments represent nearly a quarter, or 23%, of the assemblage. Vessel types represented include hollowares and tablewares, with a mixture of coarse and refined earthenwares, stoneware, refined and vitrified white earthenwares. The latter type is most common. Metal objects were mostly ferrous, steel and iron, although some yellow metal objects such as brass buckles were also recovered.

The majority of the 669 metal artifacts consisted of cut nails, agricultural hardware, and wire and flat metal fragments. These objects represent approximately 21% of all artifacts recovered.

Faunal material, in the form of mammal bones and teeth, accounted for nearly 10% of the assemblage. The bulk of this material was discovered in the area on the lawn behind the barn, to the southwest of the farmhouse. cursory examination suggests most of this faunal material consists of domestic species such as cow (*Bos taurus*) and pig (*Sus scrofa*). The remaining material in the Hoolahan assemblage consists largely of structural and fuel samples, and modern material.

Lithic is composed of fragments of slate writing boards and pencils. Composite objects include the leather sole of a shoe held together with brass tacks, and a flatware handle made of wood and steel. This material together accounts for less than 5% of the total artifacts recovered.

Material	Artifacts	% of Total
Glass	1299	40.9%
Ceramic	747	23.5%
Metal	669	21.1%
Faunal	314	9.9%
Coal/Clinker	77	2.4%
Mortar/Brick	32	1.0%
Synthetic	18	0.6%
Composite	11	0.3%
Lithic	6	0.2%
Unidentified	1	0.1%
<b>Total</b>	<b>3174</b>	<b>100.0%</b>

**Table 2.** Artifact frequency, based on material.

The site can be better understood when the assemblage is analyzed by functional groups. Table 3, below, summarizes the finds when they have been divided into categories based on function. Nearly half of the finds (46%) consist of household or domestic items, primarily glass

and ceramic fragments. This is consistent with the nature of the site, which has been occupied by a succession of rural families since the mid-19<sup>th</sup> century. The next most common finds were structural items, which consisted primarily of fasteners and pane glass. The 314 faunal items were likely the remains of animals butchered for meat, as mentioned above. While other artifact types were encountered, each of these groups makes up less than 3% of the assemblage.

Functional Group	Artifacts	% of Total
Household/Domestic	1490	46.9%
Structural	1002	31.6%
Faunal	314	9.9%
Lighting/Heating	96	3.0%
Agricultural	92	2.9%
Unidentified	89	2.9%
Personal	65	2.0%
Modern/Intrusive	19	0.6%
Communication	6	0.1%
Firearms/Hunting	1	0.1%
<b>Total</b>	<b>3174</b>	<b>100.0%</b>

**Table 3.** Artifact frequency, based on functional grouping.

### 6.2.1 Household/ Domestic

Ceramic and glass fragments dominate the assemblage of domestic or household items. The 730 ceramic artifacts in this category represent a variety of vessel types and wares, primarily hollowares and tablewares. The small size of most ceramic artifacts made more specific identification of vessel types difficult.

Vitrified white earthenware (VWE) sherds is the most common, representing 55% (n=401) of the entire ceramic assemblage. Refined white earthenware (RWE) is the second most common ceramic type, accounting for 18% (n=128) of the ceramic assemblage. Decorative patterns on the RWE and VWE include incised repetitive edging, sponged and stamped wares, and transfer prints in a variety of colours (Figure 8). The red and buff coarse earthenware are likely the remains of storage or serving vessels. Grey and buff coloured stoneware sherds might represent a variety of domestic objects, from storage vessels to blacking bottles. While the majority of ceramics at the Hoolahan site are utilitarian tablewares, both soft paste and hard paste porcelain artifacts are present in the assemblage. These include at least one tea cup and one coffee cup. Most of the porcelain is plain, but several sherds exhibit a decorative gilt band (Figure 9), while others have lithographed floral decoration. Some yellowware artifacts were also recovered. Domestic ceramics from the site are summarized in Table 4, below.

The Parks Canada Archaeological Resources Database (2012) provides date ranges for most of these wares. Refined white earthenwares (RWE) date from post-1830, while vitrified white earthenwares (VWE) were produced post-1845. Sponged and stamped wares date from the period 1840-1890, while the few lithographed sherds postdate 1890.

Ware Type	Dec Pattern	Dec Colour	Number	Date
Coarse Earthenware (red/buff)	Glazed	Yellow, brown	89	
Coarse Stoneware (buff/grey/brown)	Glazed	Grey, buff, brown	38	
Porcelain	Plain	Colourless	41	
Porcelain	Lithograph	Polychrome	9	1890+
Porcelain	Gilt band	Gilt	5	
Porcelain	Painted (floral)	Polychrome	2	
Refined White Earthenware (RWE)	Plain	Colourless	91	1830+
Refined White Earthenware (RWE)	Impressed repetitive pattern, unscaloped edge (edged ware)	Blue	12	1830+
Refined White Earthenware (RWE)	Transfer	Blue, brown, black	11	1830+
Refined White Earthenware (RWE)	Stamped	Blue, brown, purple	7	1830+
Refined White Earthenware (RWE)	Moulded	Plain	2	1830+
Refined White Earthenware (RWE)	Painted (floral)	Polychrome	3	1830+
Refined White Earthenware (RWE)	Sponged	Blue	2	1830+
Vitrified White Earthenware (VWE)	Plain	Colourless	230	1845+
Vitrified White Earthenware (VWE)	Transfer	Blue, brown, black, green	64	1845+
Vitrified White Earthenware (VWE)	Moulded	Colourless	21	1845+
Vitrified White Earthenware (VWE)	Sponged	Blue	20	1845+
Vitrified White Earthenware (VWE)	Stamped	Blue, brown, black, green	17	1845+
Vitrified White Earthenware (VWE)	Painted	Red	14	1845+
Vitrified White Earthenware (VWE)	Willow	Blue	12	1845+
Vitrified White Earthenware (VWE)	Floral (generic)	Polychrome	7	1845+
Vitrified White Earthenware (VWE)	Lithograph	Polychrome	7	1890+
Vitrified White Earthenware (VWE)	Impressed repetitive pattern, unscaloped edge (edged ware)	Blue	6	1845+
Vitrified White Earthenware (VWE)	Wheat (ceres)	Colourless	2	1845+
Vitrified White Earthenware (VWE)	Banded	Red	1	1845+
Yellowware	Plain	Yellow	15	1827+
Yellowware	Rockingham		2	1835+
<b>Total</b>			<b>730</b>	

**Table 4.** Domestic ceramics from the Hoolahan Site.

Glass artifacts make up most of the remainder of the objects in the Household/ Domestic category. These 747 artifacts consist almost entirely of bottle glass, in a variety of colours including amber/brown, dark olive green, green, blue/green (aqua), and clear. This glass is almost entirely machine made, as the bottle finishes in Figure 10 demonstrate. Machine made bottles were first produced in the late-19<sup>th</sup> century, and became increasingly common in the 20<sup>th</sup> century (Jones 1981: 38-39). The glass assemblage also contains 44 sherds with a distinct purple hue. This is the result of a manganese additive, which was only used during the period ca. 1880-1920 (Adams 1994: 100). Although bottle glass predominates at the site,

several fragments of pressed glass tableware were also recovered, as well as parts of a drinking tumbler, and a lemon squeezer.

Although ceramic and glass sherds made up the vast majority of artifacts in the Household/Domestic functional group, several other kitchen and house wares fall into this category. These include a salt and pepper shaker, a pot handle, the handle from a piece of flatware, as well as two steel castors, likely for furniture or a bed.

Object	Number
Bottle (unidentified)	351
Wine bottle	144
Case bottle	84
Beverage bottle (unidentified)	74
Beer bottle	47
Container unspecified	21
Unidentified	9
Liquor bottle	6
Tableware	6
Tumbler	2
Jar unspecified	1
Lemon squeezer	1
Stemware	1
<b>Total</b>	<b>747</b>

**Table 5.** Glass artifacts included in the Household/ Domestic functional group.

### 6.2.2 Structural

The next most common type of find on the Hoolahan site were structural items. This category includes brick and mortar samples, pane glass, and a variety of fasteners. The presence of this material is not surprising, given the proximity of the historic farmhouse, and more recent barn. Pane glass is the most common structural item – there are 494 fragments in the collection. Fasteners include cut nails and spikes, wire nails, nuts, and bolts. Cut nails (Figure 11), common between 1830 and 1890, were the most common fastener encountered. There are 424 in the assemblage. A representative sample of wire nails was retained, but most wire nails were not inventoried. Two wrought nails were also found at the site.

### 6.2.3 Faunal

Faunal items, in the form of bones and teeth, were the third most common type of find from the site. The 314 faunal items include 276 mammal bone fragments, 23 teeth, 14 bird bones, and 1 shell fragment. cursory examination suggests the mammal bones are those of domestic species such as cow (*Bos taurus*) and pig (*Sus scrofa*), Figure 12. Sixteen of these bones exhibit butchery marks, indicating they were consumed. The few bird bones appear to represent domestic species as well, specifically chicken (*Gallus domesticus*) and turkey

(*Melleagris gallopavo*). Most of the faunal material was recovered from test units on the lawn behind the barn, to the southwest of the farmhouse.

#### 6.2.4 Lighting/ Heating

There are a total of 96 artifacts in the Lighting/ Heating functional group, most of which are coal (65) and clinker (12) fragments. Also included in this category are 14 fragments of lantern chimney glass, and five light bulb fragments.

#### 6.2.5 Agricultural

Agricultural items are primarily related to fencing, and include 66 wire fragments, 11 staples, and three fragments of barbed wire. Also included in this category are two horseshoes (Figure 13), and five buckles which are likely harness tack. Two short lengths of chain and a shovel handle were also grouped in this category. There are a total of 92 artifacts in the Agricultural category, but this number represents less than 3% of the total artifacts recovered from the site. It is possible, however, that much of the unidentified iron hardware is also related to agriculture.

#### 6.2.6 Unidentified

There are 89 unidentified artifacts in the assemblage. This category includes both “unidentifiable” items such as corroded lumps and melted glass, whose original purpose will never be known, as well as “unidentified” iron hardware, which could potentially be identified in the future.

#### 6.2.7 Personal

Although the 65 “Personal” items represent only 2% of the artifacts recovered from the site, they remain some of the more interesting finds. Seven fragments of white clay smoking pipes were found. Maker’s marks were visible on two stem fragments (Figure 14): R. Bannerman Montreal (1858-1888), and W. & D. Bell Quebec City (1862-1881).

Clothing items consisted of five buttons, three shoe fragments, and 10 grommets or shoe eyelets. The buttons were produced from a variety of materials, including copper alloy, ferrous metal, porcelain (Prosser type), and plastic.

One unusual copper alloy object, (Figure 15), appears to be a piece of jewellery, likely either an earring, or part of a brooch. Two coins were found, (Figure 16). They are both low denomination Canadian coins from the 20<sup>th</sup> century: a 1929 nickel, and a 1959 penny.

Pharmaceutical/ toiletry items include 34 fragments of pharmaceutical or toiletry bottles, including one complete specimen (Figure 17), one melted nail polish bottle, and a Bakelite comb.

The presence of children on the site was noted through the find of a porcelain doll leg (Figure 18).

#### 6.2.8 Modern/ Intrusive

The context at the Hoolahan Site proved to be fairly disturbed. Modern material in the form of wire nails, lime bottle glass, and plastic objects was encountered in nearly all test units (Figure 19). A representative sample of this material was retained and inventoried. The presence of this material mixed in with historic artifacts is not surprising, given the continuous occupation of the site until the present.

#### 6.2.9 Communication

The communication functional category comprises six fragments of slate writing board and slate pencil. These artifacts could also be evidence for the presence of children at the site.

#### 6.2.10 Firearms/ Hunting

A single brass .22 calibre rimfire cartridge was recovered.

## **7.0 Analysis and Conclusions**

The data gathered during the Stage 3 assessment does not trigger a requirement for a Stage 4 assessment, based on Section 3.4, Standards 1. f-g, and Section 3.4.2, Standards, 1. a-b of the Ontario *Standards and Guidelines for Consultant Archaeologists* (MTCS 2011).

Analysis of the Euro-Canadian artifacts recovered during the Stage 3 assessment indicates the majority of recovered material dates to the last quarter of the 19<sup>th</sup> century, and first half of the 20<sup>th</sup> century. This date range is derived from the prevalence of vitrified white earthenwares (VWE) over refined white earthenwares (RWE), the presence of manganese glass (post 1880), the frequency of machine made bottle glass (post 1900) and coal fragments. This does not include the rather substantial quantity of modern plastics, wire nails, and other modern debris not inventoried, and the presence of two 20<sup>th</sup> century coins, all dating the majority of the archaeological deposits to a post 1875 occupation. The results of the 1x1 m test units in the ploughed fields suggest the finds adjacent to the house, both north and south, are surface scatters of plough distributed artifacts with no contextual stratigraphic deposition. This general lack of stratigraphic deposition is confirmed by the widespread presence of modern material in most test units. This is also true for the units along the tree row, the side of the driveway and behind the barn. While there are more artifacts in these units, the context is poor with modern material mixed within the strata down to subsoil.

The combination of household artifacts, building materials, and scatter size indicates the site relates to the red brick farmhouse located on the property. Unfortunately, this Stage 3 assessment did not encounter any structural remains, middens, or other cultural features dating to the 19<sup>th</sup> century occupation of the site.

## **8.0 Recommendations**

Based on the results of this investigation it is recommended that:

1. No further archaeological mitigation is required on this property prior to development. The majority of material from the site dates to the period ca. 1875-1950, and so does not exhibit sufficient cultural heritage value or interest to proceed to a Stage 4 mitigation. This requirement is outlined in Section 3.4.2, Standards 1. a-b of the *Standards and Guidelines for Consultant Archaeologists*, as most (80% or more) of the archaeologically documented occupation of the property does not predate 1870, nor is this site associated with the first generation of settlement in the area (MCTS 2011).

and

2. The Ministry of Tourism, Culture and Sport provide a letter confirming that there are no further concerns with regard to alterations to archaeological sites for the property as delineated in pink in Map 1.



## **9.0 Advice on Compliance with Legislation**

- a. This report is submitted to the *Minister of Tourism and Culture* as a condition of licencing in accordance with Part VI of the *Ontario Heritage Act*, R.S.O. 1990, c 0.18. The report is reviewed to ensure that it complies with the standards and guidelines that are issued by the Minister, and that the archaeological fieldwork and report recommendations ensure the conservation, protection and preservation of the cultural heritage of Ontario. When all matters relating to archaeological sites within the project area of a development proposal have been addressed to the satisfaction of the Ministry of Tourism and Culture, a letter will be issued by the ministry stating that there are no further concerns with regard to alterations to archaeological sites by the proposed development.
- b. It is an offence under Sections 48 and 69 of the *Ontario Heritage Act* for any party other than a licenced archaeologist to make any alteration to a known archaeological site or to remove any artifact or other physical evidence of past human use or activity from the site, until such time as a licensed archaeologist has completed archaeological fieldwork on the site, submitted a report to the Minister stating that the site has no further cultural heritage value or interest , and the report has been filed in the Ontario Public Register of Archaeology Reports referred to in Section 65.1 of the *Ontario Heritage Act*.
- c. Should previously undocumented archaeological resources be discovered, they may be a new archaeological site and therefore subject to Section 48 (1) of the *Ontario Heritage Act*. The proponent or person discovering the archaeological resources must cease alteration of the site immediately and engage a licenced consultant archaeologist to carry out archaeological fieldwork, in compliance with Section 48 (1) of the *Ontario Heritage Act*.
- d. The *Cemeteries Act*, R.S.O. 1990 c. C.4 and the *Funeral, Burial and Cremation Services Act*, 2002, S.O. 2002, c.33 (when proclaimed in force) require that any person discovering human remains must notify the police or coroner and the Registrar of Cemeteries at the Ministry of Consumer Services.

## **10.0 Closure**

Paterson has prepared this report in a manner consistent with the time limits and physical constraints applicable to this report. No other warranty, expressed or implied is made. The sampling strategies incorporated in this study comply with those identified in the Ministry of Tourism, Culture and Sport's Standards and Guidelines for Consultant Archaeologists (2011) however, archaeological assessments may fail to identify all archaeological resources.

The present report applies only to the project described in the document. Use of this report for purposes other than those described herein or by person(s) other than Caivan Development Corp or their agent(s) is not authorized without review by this firm for the applicability of our recommendations to the altered use of the report.

We trust that this report meets your current needs. If you have any questions or we may be of further assistance, please contact the undersigned.

Paterson Group Inc.



Ben Mortimer, M.A., A.P.A.  
Senior Archaeologist



Nadine Kopp, M.A., A.P.A.  
Project Archaeologist

## **11.0 Bibliography and Sources**

- Adams, N.  
1994 *Field Manual for Avocational Archaeologists in Ontario*. Ontario Archaeological Society Inc., Toronto.
- Archaeological Services Inc. and Geomatics International Inc.  
1999 *The Archaeological Resource Potential Mapping Study of the Regional Municipality of Ottawa-Carleton: Planning Report*. Archaeological Services Inc. and Geomatics International Inc., Ottawa, Ont.
- Belden & Co.  
1971 *Historical Sketch of the County of Carleton*. Mika Silk Screening Ltd., Belleville.
- Belden, H. C.  
1879 *Illustrated Historical Atlas of the County of Carleton (Including City of Ottawa), Ont.*, Toronto.
- Bond, C. C. J.  
1968 *The Ottawa Country*. National Capital Comm., Ottawa.
- Chapman, L. J. and D. F. Putnam  
2007 *The Physiography of Southern Ontario* Miscellaneous Release Data 228. Ontario Geological Survey, Toronto.
- Clermont, N.  
1999 The Archaic Occupation of the Ottawa Valley. In *Ottawa Valley Prehistory*, edited by J.-L. Pilon, pp. 43-53. Imprimerie Gauvin, Hull.
- Craig, S.  
1974 *Hello Nepean*. Merivale Pioneer Historians, Nepean.
- Elliot, B. S.  
1991 *The City Beyond: A History of Nepean, Birthplace of Canada's Capital 1792-1990*. Corporation of the City of Nepean, Nepean, Ont.
- Ellis, C. J. and B. D. Deller  
1990 Paleo-Indians. In *The Archaeology of Southern Ontario to A.D.1650*, edited by C. J. Ellis and N. Ferris, pp. 37-63. vol. 5. Occasional Publications of the London Chapter, OAS, London.
- Engelbrecht, W.  
1999 Iroquoian Ethnicity and Archaeological Taxa. In *Taming the Taxonomy: Toward a New Understanding of Great Lakes Archaeology*, edited by R. F. Williamson and C. M. Watts, pp. 51-60. eastendbooks, Toronto.
- Ferris, N.  
1999 Telling Tales: Interpretive Trends in Southern Ontario Late Woodland Archaeology. *Ontario Archaeology* 68:1-62.
- Golder Associates  
2010 *Stage 4 Archaeological Assessment Mattamy Half Moon Bay South Subdivision, Location 1 (Bhfw-20), Part of Lot 9, Concession 3 R.F., Location 2 (Bhfw-21), Part of Lot 8*

*Concession 3 R.F., Geographic Township of Nepean, Now City of Ottawa, Ontario.* Copies available from PIPF# 243-075-2010 and P243-079-2010.

2013 *Stage 1 Archaeological Assessment Proposed Barrhaven-Riverside South Rapid Transit.*

Hart, J. P.

2011 The Effects of Geographical Distances on Pottery Assemblages and Similarities: A Case Study from Northern Iroquoia. In *Journal of Archaeological Science*.

Hart, J. P. and H. J. Brumbach

2003 The Death of Owasco. *American Antiquity* 68(4):737-752.

2005 Cooking Residues, Ams Dates, and the Middle-to-Late Woodland Transition in Central New York. *Northeast Anthropology* 69(Spring):1-34.

2009 On Pottery Change and Northern Iroquoian Origins: An Assessment from the Finger Lakes Region of Central New York. *Journal of Anthropological Archaeology* 28 367-381.

Hart, J. P. and W. Englebrecht

2011 Northern Iroquoian Ethnic Evolution: A Social Network Analysis. In *Journal of Archaeological Method and Theory*.

Jacques Whitford Environment Limited

2008 *Stage 1 Archaeological Assessment, Proposed Half Moon Bay Subdivision, Part Lots 8 and 9, Concession 3, Township of Nepean, City of Ottawa, Ontario.* Copies available from PIF #P002-143-2008.

Jamieson, S.

1999 A Brief History of Aboriginal Social Interactions in Southern Ontario and Their Taxonomic Implications. In *Taming the Taxonomy: Toward a New Understanding of Great Lakes Archaeology*, edited by R. F. Williamson and C. M. Watts, pp. 175-192. eastendbooks, Toronto.

Jones, Olive

1981 The Parks Canada Glass Glossary. Environment Canada, Ottawa.

Laliberté, M.

1999 The Middle Woodland in the Ottawa Valley. In *Ottawa Valley Prehistory*, edited by J.-L. Pilon, pp. 69-81. Imprimerie Gauvin, Hull.

Marshall, I. B., J. Dumanski, E. C. Huffman, and P. G. Lajoie

1979 *Soils, Capability and Land Use in the Ottawa Urban Fringe.* Land Resource Research Institute, Research Branch, Agriculture Canada.

Martin, S. W. J.

2008 Languages Past and Present: Archaeological Approaches to the Appearance of Northern Iroquoian Speakers in the Lower Great Lakes Region of North America. *American Antiquity* 73(3):441-463.

Ministry of Tourism and Culture

2011 Standards and Guidelines for Consultant Archaeologists, edited by Ministry of Tourism and Culture. Queen's Printer for Ontario.

- Mitchell, B. M.  
1963 Occurrence of Overall Corded Pottery in the Upper Ottawa Valley, Canada. *American Antiquity* 29(1):114-115.
- Mortimer, B.  
2012 Whose Pot Is This? Analysis of Middle to Late Woodland Ceramics from the Kitchikewana Site, Georgian Bay Islands National Park of Canada. Unpublished M.A. Thesis, Department of Anthropology, Trent University, Peterborough.
- Northeastern Archaeological Associates Ltd.  
2011 *Stage 1 and 2 Archaeological Assessment of the Monarch Corporation Subdivision Lands, South Part of East Part of Lot 8, Concession 2 (Rideau Front), Township of Nepean, Ontario*. Copies available from PIF#: P-025-228-2011.
- OLR  
Ontario Land Registry Office Records, Ontario.
- Parks Canada  
2012 Archaeological Resources Database. Parks Canada, Cornwall.
- Ritchie, W. A.  
1969 *The Archaeology of New York State*. Revised ed. The Natural History Press, Garden City.
- Statistics Canada  
1871 Census of Canada. Accessed, Library and Archives of Canada from <http://www.collectionscanada.gc.ca/databases/census-1871/index-e.html>.
- Walker, H. J. and O. Walker  
1968 *The Carleton Saga*. The Runge Press Ltd., Ottawa, Ont.
- Watson, G. D.  
1972 A Woodland Indian Site at Constance Bay, Ontario. *Ontario Archaeology* 18:1-24.  
  
1980 The Wyght Site: A Multicomponent Woodland Site on the Lower Rideau Lake, Leeds County, Ontario. Unpublished M.A. Thesis, Department of Anthropology, Trent University, Peterborough.  
  
1990 Paleo-Indian and Archaic Occupations of the Rideau Lakes. *Ontario Archaeology* 50:5-26.  
  
1999 The Paleo-Indian Period in the Ottawa Valley. In *Ottawa Valley Prehistory*, edited by J.-L. Pilon, pp. 28-41. Imprimerie Gauvin, Hull.
- Wright, J. V.  
1966 *The Ontario Iroquois Tradition*. Bulletin 210. National Museum of Canada, Ottawa.  
  
2004 *A History of the Native People of Canada: Volume Iii (A.D. 500 - European Contact)*. National Museum of Canada Mercury Series, Archaeological Survey of Canada Paper No. 152. Canadian Museum of Civilization, Hull.

**12.0 Images**



**Figure 1.** Excavating 1 x 1 m test units in the ploughed field to the south of the farmhouse, facing west. (D071).



**Figure 2.** Excavating 1 x 1 m test units in the ploughed field to the south of the farmhouse, facing west. (D069).



**Figure 3.** Excavating 1 x 1 m test units in the lawn to the southwest of the farmhouse, facing south. (D065).



**Figure 4.** Excavating 1 x 1 m test units in the field northeast of the farmhouse, facing northeast (D064).



Figure 5. Typical stratigraphy at the Hoolahan Site – a loamy clay plough zone over a lighter clay subsoil. (D061).



Figure 6. Possible plough scar in unit 447.5E 462.5N. (D057).





**Figure 7.** Possible post hole in unit 430E 465N. (D053).



**Figure 8.** Sample of refined white earthenware (RWE), including impressed repetitive pattern (unscaloped edge), stamped, sponged, and a variety of transfer printed designs. 435E 480N. (D073).



**Figure 9.** Hard paste porcelain, decorated with a gilt band. 535E 510N, 525E 515N, and 432.5E 477.5N. (D074).



**Figure 10.** Two machine made bottle finishes. 430E 475N (L), 432.5E 477.5N (R). (D076).



**Figure 11.** Cut nails, the most common type of fastener found at the site. 432.5E 477.5N. (D075).



**Figure 12.** Example of mammal bones – likely cow (*Bos taurus*). 432.5E 477.5N. (D077).



Figure 13. One of two horseshoes found at the site. 425E 480N. (D078).



Figure 14. White clay smoking pipe stems. R. Bannerman Montreal (1858-1888), top, (435E 480N) and W. & D. Bell Quebec (1862-1881), bottom (525E 515N). (D080).



**Figure 15.** Copper alloy object – possibly an earring or part of a brooch. 460E 455N. (D082).



**Figure 16.** The two coins found at the site – a 1959 penny (L), and 1929 nickel (R). (D083).



**Figure 17.** Complete toiletry/ pharmaceutical bottle. 435.5E 477.5N. (D079).



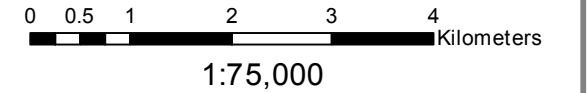
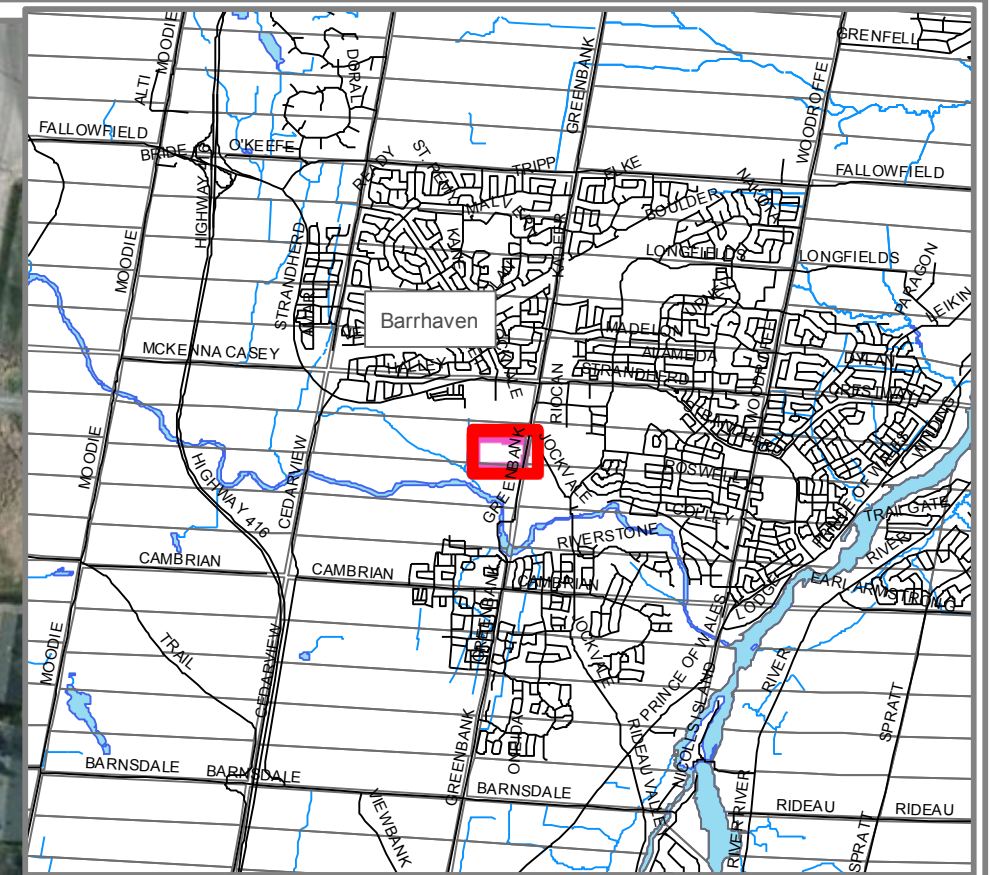
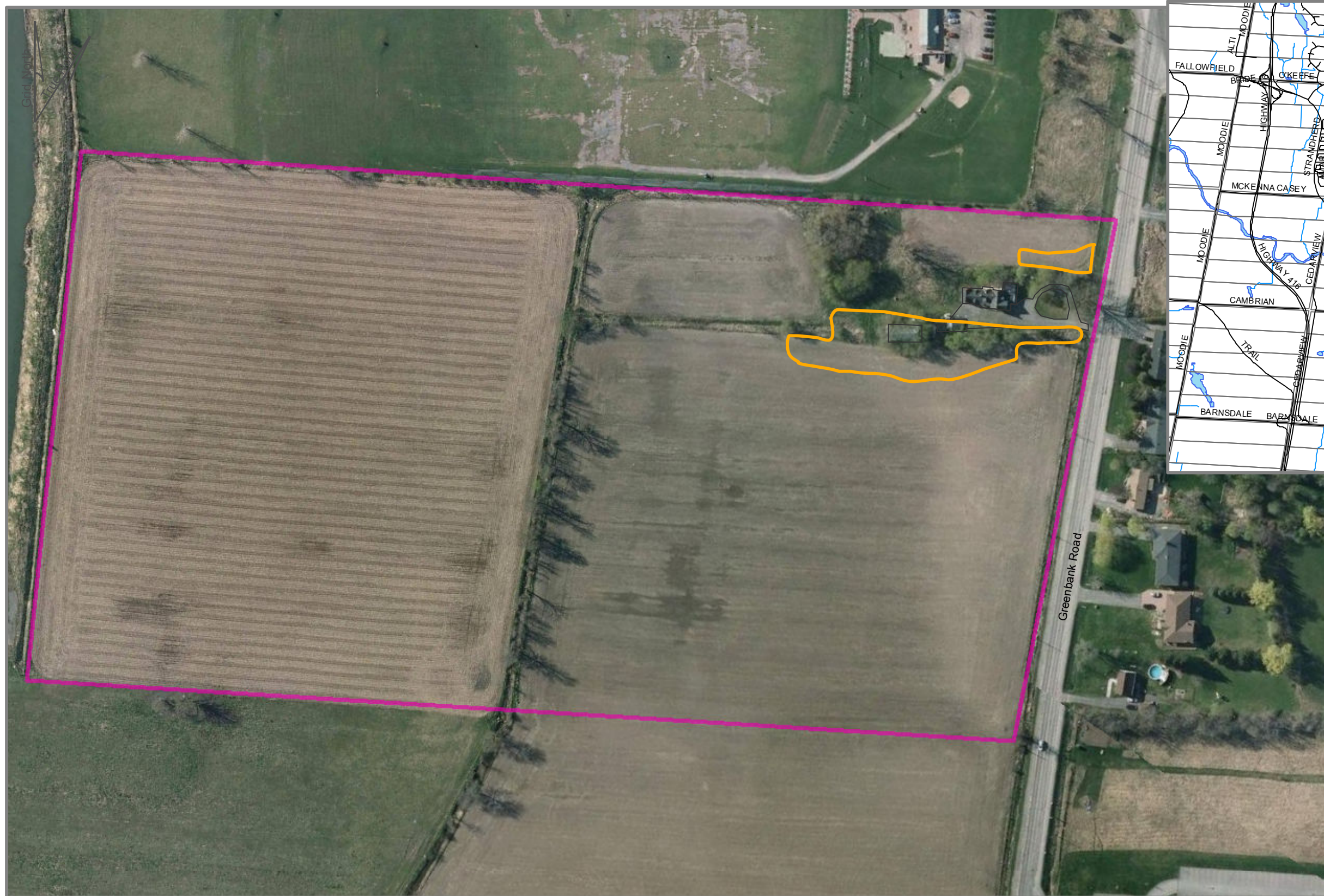
**Figure 18.** Porcelain doll leg. 420E 460N. (D081).



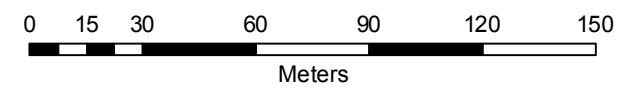
**Figure 19.** Sample of modern/ intrusive material encountered in most test units, including bottle glass, wire nails, plastic, and a fragment of tar shingle. 430E 485N. (D084).

**13.0 Maps**

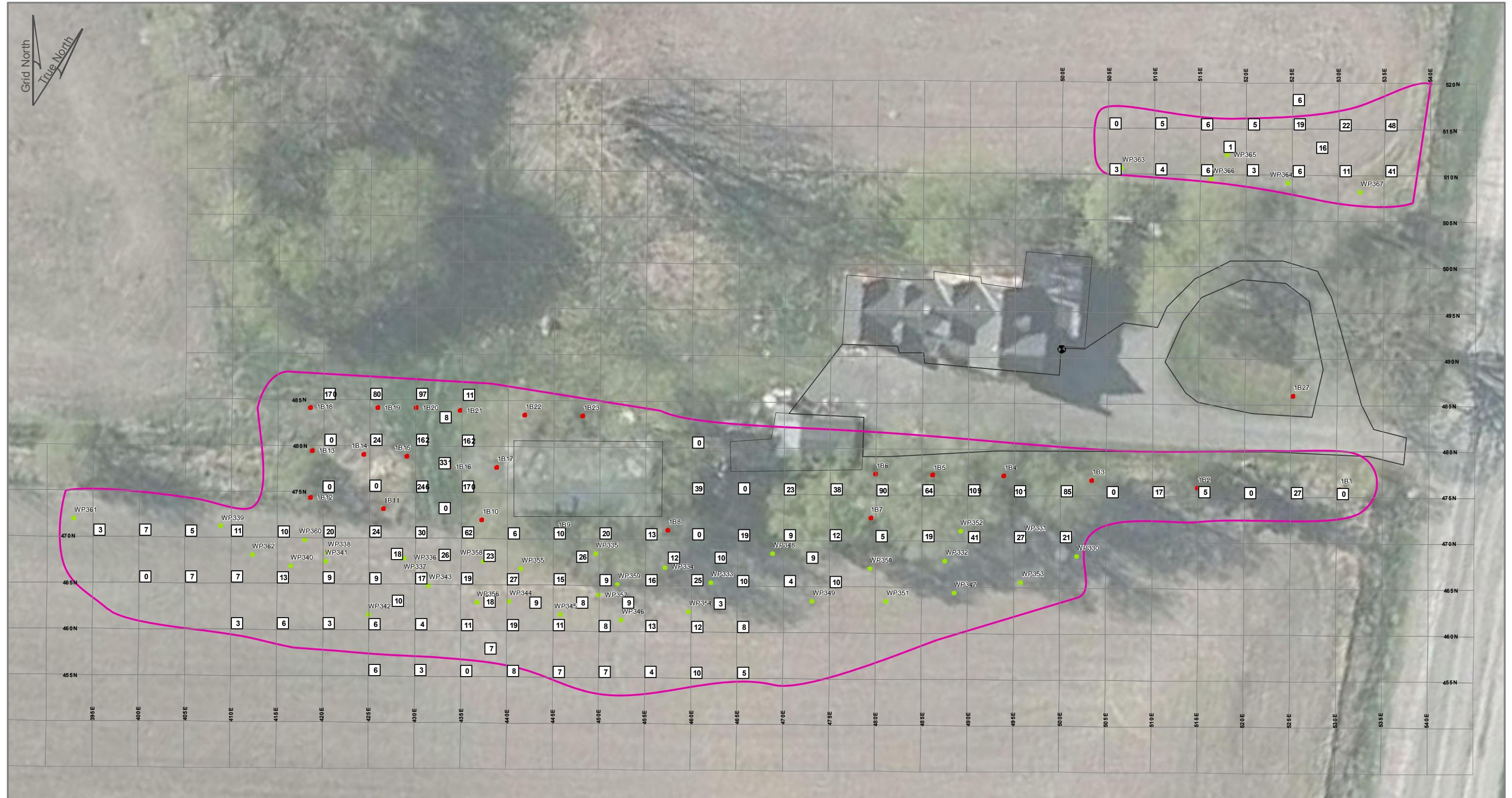




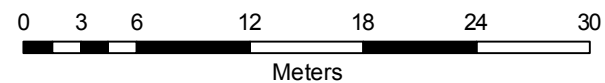
- Stage 3 Site Area
- Stage 2 Study Area



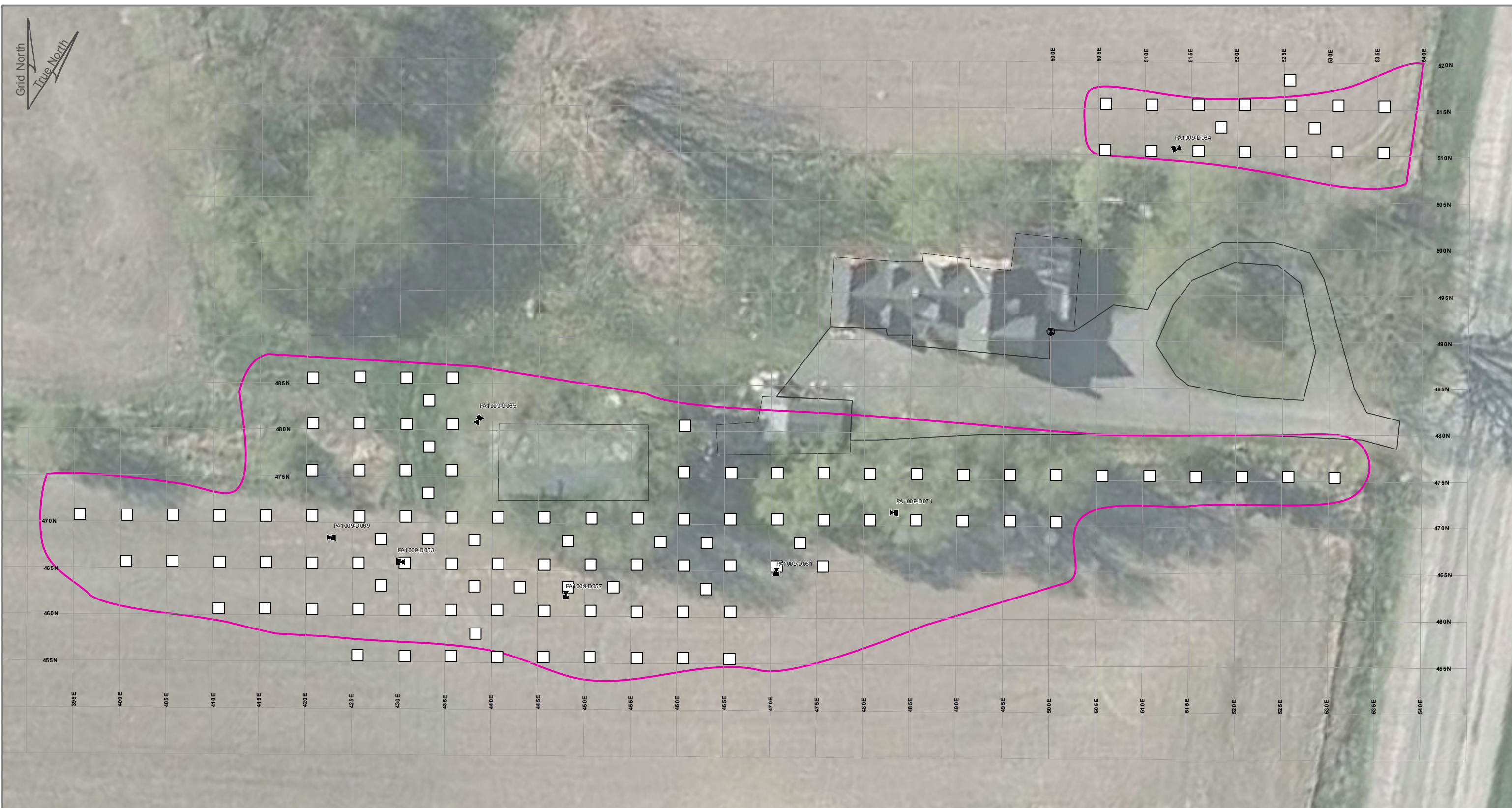
**References:**  
 Base Image: GeoOttawa Air Photo Circa 2011  
 Projection: Transverse Mercator Datum NAD 83, UTM Zone 18  
 Inset Map: GeoOttawa Data Catalogue



- Site Area
- 1 x 1 m unit (with artifact tally)
- Pedestrian
- Shovel Test
- Site Datum (Iron Bar)  
Local Grid 500E 491N



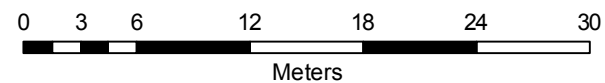
References:  
 Base Image: GeoOttawa Air Photo Circa 2011  
 Projection: Transverse Mercator Datum NAD 83, UTM Zone 18



▲ Photo Location and Direction

▭ Site Area

□ 1 x 1 m unit



References:

Base Image: GeoOttawa Air Photo Circa 2011  
 Projection: Transverse Mercator Datum NAD 83, UTM Zone 18

**14.0 Appendix A: Artifact Catalogue**

Provenience	Quantity	Object	Material	Portion	Decorative Pattern	Decorative Colour	Condition	Primary Diagnostic
395E 470N-1	1	Bottle unidentified	Green Glass	body			Incomplete	
395E 470N-1	1	Bottle unidentified	Green Glass (light)	neck			Incomplete	
395E 470N-1	1	Mammal bone	Bone				Butchered	
400E 460N-1	2	Tableware unspecified	Vitrified White Earthenware		Plain	Colourless	Incomplete	
400E 465N-1	1	Holloware unspecified	Vitrified White Earthenware	rim	Moulded unspecified	Colourless	Incomplete	
400E 465N-1	1	Tableware unspecified	Vitrified White Earthenware	body	Plain	Colourless	Incomplete	
400E 465N-1	1	Pharmaceutical / toiletry bottle	Blue Glass (dark)	body			Incomplete	
400E 465N-1	2	coal	coal					
405E 465N-1	1	Holloware unspecified	Vitrified White Earthenware		plain	Colourless		
405E 465N-1	1	Holloware unspecified	Vitrified White Earthenware	rim	Sponged	blue	Incomplete	
405E 465N-1	1	Bottle unidentified	Colourless Glass	neck			Incomplete	
405E 465N-1	2	Cut nail	iron				Incomplete	
405E 465N-1	1	Mammal bone	bone				Incomplete	
405E 465N-1	1	coal	coal					
405E 470N-1	1	Tableware unspecified	Vitrified White Earthenware	body	Unspecified Transfer	blue	Incomplete	
405E 470N-1	3	Tableware unspecified	Vitrified White Earthenware	body	Plain	Colourless	Incomplete	
405E 470N-1	1	staple	iron				Incomplete	
410E 460N-1	1	Beverage bottle unspecified	Green Glass	body			Incomplete	
410E 460N-1	1	Jar	Colourless Glass	rim			Incomplete	
410E 460N-1	1	Buckle	Iron				Incomplete	
410E 465N-1	2	Tableware unspecified	Vitrified White Earthenware	body	Unspecified Transfer	blue	Incomplete	Flow transfer
410E 465N-1	1	Unidentified Object	White Glass translucent	base			Incomplete	
410E 465N-1	3	Bottle unidentified	Solarized Glass Manganese Tint				Incomplete	
410E 465N-1	1	Bottle unidentified	Colourless Glass	body			Incomplete	
410E 470N-1	4	Holloware	Vitrified White Earthenware	body	Plain	Colourless	Incomplete	
410E 470N-1	1	Container unspecified	Coarse Stoneware	body	Plain	buff	Incomplete	
410E 470N-1	2	Bottle unidentified	Blue/Green Glass (aqua)	body			Incomplete	
410E 470N-1	3	Wine bottle	Green Glass (dark olive)	body			Incomplete	
410E 470N-1	1	Bottle unidentified	Colourless Glass	body			Incomplete	
415E 460N-1	3	Holloware unspecified	Vitrified White Earthenware		Plain	Colourless	Incomplete	
415E 460N-1	1	wire	Steel				Incomplete	
415E 460N-1	2	Unidentifiable (corroded lump etc.)	iron					
415E 465N-1	1	Tableware unspecified	Refined White Earthenware	rim	Willow	blue	Incomplete	
415E 465N-1	2	Tableware unspecified	Refined White Earthenware	body	Plain	Colourless	Incomplete	
415E 465N-1	1	Tableware unspecified	Vitrified White Earthenware	body	Plain	Colourless	Incomplete	
415E 465N-1	3	Bottle unidentified	Solarized Glass Manganese Tint	body			Incomplete	
415E 465N-1	1	Bottle unidentified	Blue/Green Glass (aqua)	body			Incomplete	
415E 465N-1	1	Wine bottle	Green Glass (dark olive)	body			Incomplete	

Provenience	Quantity	Object	Material	Portion	Decorative Pattern	Decorative Colour	Condition	Primary Diagnostic
415E 465N-1	1	Bottle unidentified	Colourless Glass	body			Incomplete	
415E 465N-1	1	Cut nail	Iron				Complete	
415E 465N-1	1	Mammal bone	bone				Incomplete	
415E 465N-1	1	Sample	Mortar					
415E 470N-1	3	Case bottle	Green Glass (dark olive)	body			Incomplete	
415E 470N-1	2	Bottle unidentified	Colourless Glass	body			Incomplete	
415E 470N-1	1	Cut nail	Iron				Incomplete	
415E 470N-1	2	Mammal bone	bone				Incomplete	
415E 470N-1	1	coal	coal					
415E 470N-1	1	Clinker (spent fuel)	Clinker					
420E 460N-1	2	Tableware unspecified	Vitrified White Earthenware	body	Plain	Colourless	Incomplete	
420E 460N-1	1	Doll leg / foot	Porcelain unspecified			blue	Complete	
420E 465N-1	1	Holloware unspecified	Vitrified White Earthenware	body	Plain	Colourless	Incomplete	
420E 465N-1	1	Stemware unspecified	Colourless Glass	base			Incomplete	
420E 465N-1	1	Beverage bottle unspecified	Green Glass	finish / rim			Incomplete	
420E 465N-1	2	Case bottle	Green Glass (dark olive)	body			Incomplete	
420E 465N-1	2	Bottle unidentified	Colourless Glass	body			Incomplete	
420E 465N-1	1	Cut nail	iron				Incomplete	
420E 465N-1	1	wire	steel				Incomplete	
420E 470N-1	1	Holloware unspecified	Refined White Earthenware	base	Unspecified Transfer	blue	Incomplete	
420E 470N-1	1	Tableware unspecified	Refined White Earthenware	base	Plain	Colourless	Incomplete	
420E 470N-1	1	Tableware unspecified	Vitrified White Earthenware	body	Plain	Colourless	Incomplete	
420E 470N-1	1	Holloware unspecified	Soft Paste Porcelain	base	Gilt band	Colourless	Incomplete	
420E 470N-1	1	Container unspecified	Coarse Earthenware red	body	Plain	Yellow	Incomplete	
420E 470N-1	1	Case bottle	Colourless Glass	body			Incomplete	
420E 470N-1	1	Bottle unidentified	Blue/Green Glass (aqua)	body			Incomplete	
420E 470N-1	3	Wine bottle	Green Glass (dark olive)				Incomplete	
420E 470N-1	1	Bottle unidentified	Solarized Glass Manganese Tint	body			Incomplete	
420E 470N-1	1	Pane glass	Colourless Glass					
420E 470N-1	5	Cut nail	Iron				Incomplete	
420E 470N-1	3	Mammal bone	bone				Incomplete	
420E 485N-1	1	Holloware unspecified	Vitrified White Earthenware	body	Unspecified Transfer	Green	Incomplete	
420E 485N-1	1	Tableware unspecified	Vitrified White Earthenware	base	Plain	Colourless	Incomplete	
420E 485N-1	10	Holloware unspecified	Vitrified White Earthenware		Plain	Colourless	Incomplete	
420E 485N-1	1	Tableware unspecified	Vitrified White Earthenware	body	Stamped	blue	Incomplete	
420E 485N-1	1	Tableware unspecified	Vitrified White Earthenware	body	Moulded unspecified	blue	Incomplete	
420E 485N-1	1	Door knob	Coarse Earthenware red			black	Complete	
420E 485N-1	1	Liquor bottle	Amber/Brown Glass	base			Incomplete	
420E 485N-1	10	Beer bottle	Amber/Brown Glass	body			Incomplete	
420E 485N-1	15	Case bottle	Green Glass				Incomplete	

Provenience	Quantity	Object	Material	Portion	Decorative Pattern	Decorative Colour	Condition	Primary Diagnostic
420E 485N-1	26	Wine bottle	Green Glass (dark olive)				Incomplete	
420E 485N-1	3	Beverage bottle unspecified	Green Glass				Incomplete	
420E 485N-1	6	Bottle unidentified	Solarized Glass Manganese Tint	body			Incomplete	
420E 485N-1	2	Bottle unidentified	Blue/Green Glass (aqua)				Incomplete	
420E 485N-1	16	Bottle unidentified	Colourless Glass				Incomplete	
420E 485N-1	38	Pane glass	Colourless Glass					
420E 485N-1	15	Cut nail	iron					
420E 485N-1	2	Unidentified Object	Iron				Incomplete	
420E 485N-1	1	Cartridge casing	Brass (copper + zinc)				Crushed / trampled	22 Short rimfire
420E 485N-1	11	Mammal bone	bone				Incomplete	
420E 485N-1	4	Bird bone	bone				Incomplete	
420E 485N-1	5	coal	coal					
425E 455N-1	2	Holloware unspecified	Vitrified White Earthenware		Plain	Colourless	Incomplete	
425E 455N-1	1	Tableware unspecified	Yellowware	body	banded	blue	Incomplete	
425E 455N-1	1	Unidentified Object	Coarse Earthenware red	body			Incomplete	
425E 455N-1	1	Wine bottle	Green Glass (dark olive)	body			Incomplete	
425E 455N-1	1	Cut nail	Iron					
425E 460N-1	2	Bottle unidentified	Amber/Brown Glass				Incomplete	
425E 460N-1	1	Bottle unidentified	Colourless Glass	body			Incomplete	
425E 460N-1	3	Cut nail	iron					
425E 465N-1	1	Tableware unspecified	Vitrified White Earthenware	base	Plain	Colourless	Incomplete	
425E 465N-1	2	Case bottle	Green Glass (dark olive)	body			Incomplete	
425E 465N-1	2	Wine bottle	Green Glass (dark olive)	neck			Incomplete	
425E 465N-1	1	Bottle unidentified	Blue/Green Glass (aqua)	base			Incomplete	
425E 465N-1	2	Bottle unidentified	Colourless Glass				Incomplete	
425E 465N-1	1	Mammal bone	bone				Incomplete	
425E 470N-1	2	Tableware unspecified	Vitrified White Earthenware	body	Unspecified Transfer	blue	Incomplete	
425E 470N-1	1	Tableware unspecified	Vitrified White Earthenware	base	Plain	Colourless	Incomplete	
425E 470N-1	1	Case bottle	Green Glass (dark olive)	body			Incomplete	
425E 470N-1	1	Wine bottle	Green Glass (dark olive)	body			Incomplete	
425E 470N-1	4	Beverage bottle unspecified	Green Glass	body			Incomplete	
425E 470N-1	5	Bottle unidentified	Colourless Glass				Incomplete	
425E 470N-1	2	Bottle unidentified	Solarized Glass Manganese Tint	body			Incomplete	
425E 470N-1	2	Pane glass	Colourless Glass					
425E 470N-1	1	Cut nail	Iron				Complete	
425E 470N-1	1	Unidentified Object	iron				Incomplete	
425E 470N-1	3	Mammal bone	bone				Incomplete	
425E 470N-1	1	Tooth / teeth unspecified	Dentine (Tooth)				Incomplete	
425E 480N-1	7	Tableware unspecified	Vitrified White Earthenware		Unspecified Transfer	brown	Incomplete	
425E 480N-1	1	Holloware unspecified	Soft Paste Porcelain	body	Plain	Colourless	Incomplete	

Provenience	Quantity	Object	Material	Portion	Decorative Pattern	Decorative Colour	Condition	Primary Diagnostic
425E 480N-1	2	Case bottle	Colourless Glass	body			Incomplete	
425E 480N-1	1	Beverage bottle unspecified	Amber/Brown Glass	body			Incomplete	
425E 480N-1	2	Wine bottle	Green Glass (dark olive)	body			Incomplete	
425E 480N-1	2	Pane glass	Colourless Glass					
425E 480N-1	3	cut nail	Iron				Incomplete	
425E 480N-1	1	bolt	Steel				Complete	
425E 480N-1	1	Horseshoe	Iron				Complete	
425E 480N-1	4	Unidentified Object	Iron				Incomplete	
425E 485N-1	9	Tableware unspecified	Vitrified White Earthenware		Plain	Colourless	Incomplete	
425E 485N-1	2	Tableware unspecified	Vitrified White Earthenware	body	Painted unspecified	Pink	Incomplete	
425E 485N-1	1	Tableware unspecified	Vitrified White Earthenware	body	Painted unspecified	red	Incomplete	
425E 485N-1	1	Holloware unspecified	Hard Paste European/English Porcelain	base	Plain	Colourless	Incomplete	
425E 485N-1	1	container	Coarse Stoneware	body		brown	Incomplete	Salt glaze
425E 485N-1	2	Wine bottle	Green Glass (dark olive)				Incomplete	
425E 485N-1	1	Beverage bottle unspecified	Green Glass	base			Incomplete	
425E 485N-1	9	Case bottle	Green Glass (dark olive)	body			Incomplete	
425E 485N-1	5	Beverage bottle unspecified	Amber/Brown Glass	body			Incomplete	
425E 485N-1	1	jar	Colourless Glass	rim			Incomplete	
425E 485N-1	34	Pane glass	Colourless Glass					
425E 485N-1	1	Rivet	Steel				Complete	
425E 485N-1	4	Cut nail	Iron					
425E 485N-1	4	wire	Steel				Incomplete	
425E 485N-1	1	Unidentified Object	Iron				Incomplete	
425E 485N-1	1	Unidentified Object	Iron				Incomplete	
425E 485N-1	1	Unidentified Object	iron				Incomplete	
425E 485N-1	2	Mammal bone	bone				Incomplete	
427.5E 462.5N-1	1	Tableware unspecified	Vitrified White Earthenware	base	Unspecified Transfer		Burned / Melted	
427.5E 462.5N-1	1	Tableware unspecified	Vitrified White Earthenware	body	Plain	Colourless	Incomplete	
427.5E 462.5N-1	1	Wine bottle	Green Glass (dark olive)	body			Incomplete	
427.5E 462.5N-1	4	Bottle unidentified	Colourless Glass				Incomplete	
427.5E 462.5N-1	1	Cut nail	Iron				Complete	
427.5E 462.5N-1	1	bolt	steel				Complete	
427.5E 462.5N-1	1	Clinker (spent fuel)	Clinker					
427.5E 467.5N-1	1	Cup unspecified	Hard Paste European/English Porcelain	rim	Plain	Colourless	Incomplete	
427.5E 467.5N-1	2	Tableware unspecified	Vitrified White Earthenware		Unspecified Transfer	blue	Burned / Melted	
427.5E 467.5N-1	1	Tableware unspecified	Vitrified White Earthenware	body	Plain	Colourless	Incomplete	
427.5E 467.5N-1	2	Container unspecified	Coarse Stoneware	body	Plain	black	Incomplete	Salt glaze

Provenience	Quantity	Object	Material	Portion	Decorative Pattern	Decorative Colour	Condition	Primary Diagnostic
427.5E 467.5N-1	1	Container unspecified	Coarse Earthenware red	rim	Plain	brown	Incomplete	
427.5E 467.5N-1	1	Container	Coarse Earthenware red					
427.5E 467.5N-1	1	Drain pipe / tile	Coarse Earthenware red				Incomplete	
427.5E 467.5N-1	2	Wine bottle	Green Glass	body			Incomplete	
427.5E 467.5N-1	2	Pane glass	Colourless Glass					
427.5E 467.5N-1	3	Cut nail	Iron				Incomplete	
427.5E 467.5N-1	1	staple	iron				Incomplete	
427.5E 467.5N-1	1	Tooth / teeth unspecified	Dentine (Tooth)				Incomplete	
427.5E 482.5N-1	1	Holloware unspecified	Vitrified White Earthenware	rim	Stamped	Purple	Incomplete	
427.5E 482.5N-1	1	Holloware unspecified	Vitrified White Earthenware	body	Painted unspecified	blue	Incomplete	
427.5E 482.5N-1	3	Holloware unspecified	Vitrified White Earthenware	body	Plain	Colourless	Incomplete	
427.5E 482.5N-1	1	Pane glass	Colourless Glass					
427.5E 482.5N-1	1	bolt	steel				Incomplete	
427.5E 482.5N-1	1	Mammal bone	bone				Butchered	
430E 455N-1	1	Tableware unspecified	Vitrified White Earthenware	base	Plain	Colourless	Incomplete	
430E 455N-1	1	Container unspecified	Coarse Stoneware	base		buff	Incomplete	
430E 455N-1	1	coal	Coal					
430E 460N-1	1	Tableware unspecified	Refined White Earthenware	body	Plain	Colourless	Incomplete	
430E 460N-1	3	Cut nail	iron					
430E 465N-1	1	Tableware unspecified	Refined White Earthenware	body	Unspecified Transfer	blue	Incomplete	
430E 465N-1	1	Tableware unspecified	Refined White Earthenware	body	Stamped	brown	Incomplete	
430E 465N-1	1	Tableware unspecified	Refined White Earthenware	body	Plain	Colourless	Incomplete	
430E 465N-1	4	Tableware unspecified	Vitrified White Earthenware	body	Plain	Colourless	Incomplete	
430E 465N-1	1	Container unspecified	Coarse Earthenware red	body			Incomplete	
430E 465N-1	1	Bottle unidentified	Blue/Green Glass (aqua)	body			Incomplete	
430E 465N-1	1	Bottle unidentified	Green Glass	body			Incomplete	
430E 465N-1	1	Wine bottle	Green Glass (dark olive)	shoulder			Incomplete	
430E 465N-1	2	Pane glass	Colourless Glass					
430E 465N-1	3	Cut nail	iron					
430E 465N-1	1	Tooth / teeth unspecified	Dentine (Tooth)				Incomplete	
430E 470N-1	1	Tableware unspecified	Soft Paste Porcelain	base	Plain	Colourless	Incomplete	
430E 470N-1	2	Tableware unspecified	Vitrified White Earthenware		Plain	Colourless	Incomplete	
430E 470N-1	1	Tableware unspecified	Refined White Earthenware	body	Plain	Colourless	Incomplete	
430E 470N-1	1	Tumbler	Colourless Glass	body	flutes		Incomplete	
430E 470N-1	1	Wine bottle	Green Glass (dark olive)	body			Incomplete	
430E 470N-1	6	Bottle unidentified	Colourless Glass	body			Incomplete	
430E 470N-1	6	Pane glass	Colourless Glass					
430E 470N-1	1	Container unspecified	Coarse Earthenware red	body			Incomplete	
430E 470N-1	3	Mammal bone	bone				Incomplete	
430E 470N-1	1	bolt	iron				Incomplete	
430E 470N-1	7	Cut nail	iron				Incomplete	



Provenience	Quantity	Object	Material	Portion	Decorative Pattern	Decorative Colour	Condition	Primary Diagnostic
430E 475N-1	9	container	Coarse Stoneware			buff	Incomplete	
430E 475N-1	4	Holloware unspecified	Vitrified White Earthenware		Moulded unspecified	Colourless	Incomplete	
430E 475N-1	2	Holloware unspecified	Vitrified White Earthenware	body	Moulded unspecified	Colourless	Incomplete	
430E 475N-1	3	Tableware unspecified	Vitrified White Earthenware		Plain	Colourless	Incomplete	
430E 475N-1	2	Tableware unspecified	Vitrified White Earthenware	rim	Plain	Colourless	Burned / Melted	
430E 475N-1	3	Tableware unspecified	Vitrified White Earthenware	rim	flowers	brown	Incomplete	Lithograph
430E 475N-1	1	Holloware unspecified	Vitrified White Earthenware	body	Unspecified Transfer	Green	Incomplete	
430E 475N-1	5	Holloware unspecified	Soft Paste Porcelain		flowers	red	Incomplete	Lithograph
430E 475N-1	6	Holloware unspecified	Vitrified White Earthenware	body	Painted unspecified	red	Incomplete	
430E 475N-1	1	Tableware unspecified	Yellowware	body	Plain	Yellow	Incomplete	
430E 475N-1	1	container	Coarse Earthenware red	body			Incomplete	
430E 475N-1	5	container	Coarse Earthenware red				Incomplete	
430E 475N-1	2	Wine bottle	Green Glass (dark)	body			Incomplete	
430E 475N-1	1	Case bottle	Green Glass (dark olive)	body			Incomplete	
430E 475N-1	14	Wine bottle	Green Glass (dark olive)	body			Incomplete	
430E 475N-1	1	Beverage bottle unspecified	Green Glass	finish / rim			Complete	MACHINE MADE BOTTLE
430E 475N-1	9	Beverage bottle unspecified	Green Glass	body			Incomplete	
430E 475N-1	4	Beer bottle	Amber/Brown Glass	body			Incomplete	
430E 475N-1	5	Pharmaceutical / toiletry bottle	blue glass				Incomplete	
430E 475N-1	2	jar	Colourless Glass	rim			Incomplete	
430E 475N-1	46	Bottle unidentified	Colourless Glass	body			Incomplete	
430E 475N-1	83	Pane glass	Colourless Glass					
430E 475N-1	9	Cut nail	Iron				Incomplete	
430E 475N-1	1	bolt	Steel				Incomplete	
430E 475N-1	6	wire	Steel				Incomplete	
430E 475N-1	6	Mammal bone	bone					
430E 475N-1	6	Tooth / teeth unspecified	Dentine (Tooth)				Incomplete	
430E 475N-1	5	Light bulb base	Composite Materials				Incomplete	
430E 475N-1	4	coal	coal					
430E 480N-1	1	Tableware unspecified	Vitrified White Earthenware	rim	Plain	Colourless	Incomplete	
430E 480N-1	3	Holloware unspecified	Vitrified White Earthenware	body	Plain	Colourless	Incomplete	
430E 480N-1	2	Holloware unspecified	Vitrified White Earthenware	body	Unspecified Transfer	Green	Incomplete	
430E 480N-1	1	Tableware unspecified	Vitrified White Earthenware	body	Unspecified Transfer	Green	Incomplete	
430E 480N-1	3	Tableware unspecified	Refined White Earthenware	body	Plain	Colourless	Incomplete	
430E 480N-1	1	Holloware unspecified	Vitrified White Earthenware	body	Plain	Colourless	Burned / Melted	
430E 480N-1	8	pitcher	Coarse Earthenware red		Plain	brown	Incomplete	
430E 480N-1	22	container	Coarse Earthenware red	body	Plain	yellow	Incomplete	
430E 480N-1	1	Holloware unspecified	Coarse Earthenware red	body	Plain	brown	Incomplete	Jackfield type 19th

Provenience	Quantity	Object	Material	Portion	Decorative Pattern	Decorative Colour	Condition	Primary Diagnostic
								century
430E 480N-1	1	Clay smoking pipe (functionally complete)	White Clay	stem			Incomplete	
430E 480N-1	1	Bottle unidentified	Colourless Glass	finish / rim			Complete	
430E 480N-1	1	Bottle unidentified	Colourless Glass	finish / rim			Complete	
430E 480N-1	1	Bottle unidentified	Colourless Glass	body			Incomplete	
430E 480N-1	3	Case bottle	Colourless Glass	body			Incomplete	
430E 480N-1	13	Bottle unidentified	Colourless Glass	body			Incomplete	
430E 480N-1	1	Wine bottle	Green Glass (dark olive)	neck			Incomplete	
430E 480N-1	1	Case bottle	Green Glass (dark olive)	body			Incomplete	
430E 480N-1	2	Unidentified Object	White Glass translucent					
430E 480N-1	2	Lantern chimney	Colourless Glass	body			Incomplete	
430E 480N-1	26	Pane glass	Colourless Glass					
430E 480N-1	1	Chain	steel				Complete	
430E 480N-1	1	Barbed wire	steel				Incomplete	
430E 480N-1	14	Cut nail	Iron				Incomplete	
430E 480N-1	2	staple	Iron				Complete	
430E 480N-1	2	wire	Steel				Incomplete	
430E 480N-1	2	Mammal bone	bone				Incomplete	
430E 480N-1	1	Mammal bone	bone				Calcined	
430E 480N-1	3	coal	coal					
430E 480N-1	2	Sample	Brick					
430E 480N-1	1	Sample	Mortar					
430E 480N-1	4	Unidentifiable (corroded lump etc.)	Iron				Incomplete	
430E 480N-2	1	Holloware unspecified	Refined White Earthenware	body	Stamped	Purple	Incomplete	
430E 480N-2	1	Tableware unspecified	Coarse Earthenware red	body	Plain	mustard	Incomplete	
430E 480N-2	3	Pharmaceutical / toiletry bottle	Blue/Green Glass (aqua)				Burned / Melted	
430E 480N-2	2	Bottle unidentified	Colourless Glass				Burned / Melted	
430E 480N-2	5	Pane glass	Colourless Glass					
430E 480N-2	6	Cut nail	Iron				Incomplete	
430E 480N-3	4	jug	Coarse Earthenware red	neck		Brown	Incomplete	
430E 480N-3	8	Tableware unspecified	Coarse Earthenware red	body	Plain	mustard	Incomplete	
430E 480N-3	2	Bottle unidentified	Colourless Glass	body			Incomplete	
430E 480N-3	1	Bottle unidentified	Blue/Green Glass (aqua)	body			Burned / Melted	
430E 480N-3	1	Cut nail	Iron				Incomplete	
430E 480N-3	1	Wrought / forged nail	Iron				Incomplete	
430E 485N-1	2	container	Coarse Stoneware	base	Plain	black	Incomplete	Salt glaze

Provenience	Quantity	Object	Material	Portion	Decorative Pattern	Decorative Colour	Condition	Primary Diagnostic
430E 485N-1	4	Holloware unspecified	Vitrified White Earthenware		flowers	Green	Incomplete	Lithograph
430E 485N-1	4	Holloware unspecified	Hard Paste European/English Porcelain		flowers	polychrome	Incomplete	Lithograph
430E 485N-1	1	Tableware unspecified	Vitrified White Earthenware	base	Plain	Colourless	Incomplete	
430E 485N-1	2	Tableware unspecified	Vitrified White Earthenware		Floral generic	red	Incomplete	
430E 485N-1	1	Tableware unspecified	Refined White Earthenware	rim	Sponged	blue	Incomplete	
430E 485N-1	3	Holloware unspecified	Vitrified White Earthenware	base	Plain	Colourless	Burned / Melted	
430E 485N-1	1	Unidentified Object	Coarse Earthenware red				Incomplete	
430E 485N-1	1	Drain pipe / tile	Coarse Earthenware buff				Incomplete	
430E 485N-1	1	Bottle unidentified	Colourless Glass	finish / rim			Incomplete	MACHINE MADE BOTTLE
430E 485N-1	5	Case bottle	Green Glass (dark olive)	body			Incomplete	
430E 485N-1	3	Wine bottle	Green Glass (dark olive)	body			Incomplete	
430E 485N-1	1	Bottle unidentified	Amber/Brown Glass	body			Incomplete	
430E 485N-1	1	Pharmaceutical / toiletry bottle	Colourless Glass	body			Incomplete	
430E 485N-1	6	Bottle unidentified	Colourless Glass	body			Incomplete	
430E 485N-1	5	Lantern chimney	Colourless Glass	body			Incomplete	
430E 485N-1	1	Pharmaceutical / toiletry bottle	Blue Glass	body			Incomplete	
430E 485N-1	1	Unidentified Object	White Glass translucent	body			Incomplete	
430E 485N-1	23	Pane glass	Colourless Glass					
430E 485N-1	1	button	plastic				Complete	
430E 485N-1	1	buckle	Brass (copper + zinc)				Incomplete	
430E 485N-1	1	Nail polish bottle	Colourless Glass				Burned / Melted	
430E 485N-1	1	Canadian .01 cent coin small	Copper Alloy				Complete	1950's
430E 485N-1	1	Chain link	steel				Complete	
430E 485N-1	1	Barbed wire	steel				Incomplete	
430E 485N-1	8	Cut nail	Iron					
430E 485N-1	1	bolt	Steel				Complete	
430E 485N-1	1	washer	Steel				Complete	
430E 485N-1	2	wire	Steel				Incomplete	
430E 485N-1	2	Can seam unspecified	iron				Incomplete	
430E 485N-1	1	Unidentified Object	iron				Incomplete	
430E 485N-1	3	Bird bone	bone					
430E 485N-1	1	Mammal bone	bone				Incomplete	
430E 485N-1	2	Sample	Brick					
430E 485N-1	4	Clinker (spent fuel)	Clinker					
432.5E 467.5N-1	1	Tableware unspecified	Hard Paste European/English Porcelain	base	Plain	Colourless	Incomplete	
432.5E 467.5N-1	7	Holloware unspecified	Vitrified White Earthenware		Plain	Colourless	Incomplete	

Provenience	Quantity	Object	Material	Portion	Decorative Pattern	Decorative Colour	Condition	Primary Diagnostic
432.5E 467.5N-1	1	Tableware unspecified	Refined White Earthenware	base	Plain	Colourless	Incomplete	
432.5E 467.5N-1	1	Tableware unspecified	Vitrified White Earthenware	rim	Stamped	brown	Incomplete	
432.5E 467.5N-1	2	Container unspecified	Coarse Earthenware red	body		buff	Incomplete	
432.5E 467.5N-1	2	Container unspecified	Coarse Earthenware red	body		brown	Incomplete	
432.5E 467.5N-1	1	Drain pipe / tile	Coarse Earthenware				Incomplete	
432.5E 467.5N-1	2	Wine bottle	Green Glass (dark olive)	body			Incomplete	
432.5E 467.5N-1	1	Bottle unidentified	Colourless Glass	body			Incomplete	
432.5E 467.5N-1	6	Pane glass	Colourless Glass					
432.5E 467.5N-1	2	Cut nail	Iron				Incomplete	
432.5E 477.5N-1-2	2	Holloware unspecified	Vitrified White Earthenware		Unspecified Transfer	Green	Incomplete	
432.5E 477.5N-1-2	1	Tableware unspecified	Vitrified White Earthenware	rim	Unspecified Transfer	blue	Incomplete	Flow transfer
432.5E 477.5N-1-2	1	Tableware unspecified	Refined White Earthenware	rim	Impressed repetitive pattern unscaloped rim	blue	Incomplete	
432.5E 477.5N-1-2	1	Tableware unspecified	Vitrified White Earthenware	base	Plain	Colourless	Incomplete	
432.5E 477.5N-1-2	1	Tableware unspecified	Refined White Earthenware	rim	Plain	Colourless	Incomplete	
432.5E 477.5N-1-2	1	Tableware unspecified	Soft Paste Porcelain	base	flowers	orange	Incomplete	
432.5E 477.5N-1-2	1	Holloware unspecified	Hard Paste European/English Porcelain	body	Plain	Colourless	Incomplete	
432.5E 477.5N-1-2	1	Tableware unspecified	yellowware	rim	Plain	yellow	Incomplete	
432.5E 477.5N-1-2	1	Container unspecified	Coarse Earthenware red	body	Plain	buff	Incomplete	
432.5E 477.5N-1-2	1	Container unspecified	Coarse Stoneware	body		brown	Incomplete	
432.5E 477.5N-1-2	1	Bottle unidentified	Amber/Brown Glass	finish / rim			Complete	
432.5E 477.5N-1-2	2	Pane glass	Colourless Glass					
432.5E 477.5N-1-2	1	Lantern chimney	Colourless Glass	body			Incomplete	
432.5E 477.5N-1-2	3	Cut nail	Iron					
432.5E 477.5N-1-2	1	Castor / part	steel				Complete	
432.5E 477.5N-1-2	1	Unidentified Object	Iron					
432.5E 477.5N-1-2	1	Unidentifiable (corroded lump etc.)	Iron					
432.5E 477.5N-1-2	2	Mammal bone	bone				Calcined	
432.5E 477.5N-1-2	67	Mammal bone	bone				Incomplete	
432.5E 477.5N-1-2	4	Holloware unspecified	Refined White Earthenware	body	Stamped	blue	Incomplete	
432.5E 477.5N-1-2	3	Tableware unspecified	Vitrified White Earthenware		Stamped	black	Incomplete	
432.5E 477.5N-1-2	4	Holloware unspecified	Vitrified White Earthenware		Plain	Colourless	Burned / Melted	
432.5E 477.5N-1-2	1	Tableware unspecified	Vitrified White Earthenware	rim	Unspecified Transfer	brown	Incomplete	
432.5E 477.5N-1-2	1	container	Coarse Earthenware red	base		Yellow	Incomplete	
432.5E 477.5N-1-2	3	Drain pipe / tile	Coarse Earthenware red				Incomplete	
432.5E 477.5N-1-2	2	Tableware unspecified	Colourless Glass	body			Incomplete	Press moulded (lime glass)
432.5E 477.5N-1-2	2	Liquor bottle	Amber/Brown Glass	base			Incomplete	

Provenience	Quantity	Object	Material	Portion	Decorative Pattern	Decorative Colour	Condition	Primary Diagnostic
432.5E 477.5N-1-2	3	Bottle unidentified	Yellow Glass	body			Incomplete	
432.5E 477.5N-1-2	5	Wine bottle	Green Glass (dark olive)	body			Incomplete	
432.5E 477.5N-1-2	1	Jar	Colourless Glass	rim			Incomplete	
432.5E 477.5N-1-2	18	Bottle unidentified	Colourless Glass				Incomplete	
432.5E 477.5N-1-2	9	Bottle unidentified	Colourless Glass	body			Incomplete	
432.5E 477.5N-1-2	12	Pane glass	Colourless Glass					
432.5E 477.5N-1-2	1	Harness tack	steel				Complete	
432.5E 477.5N-1-2	1	Harness buckle	Composite Materials				Complete	
432.5E 477.5N-1-2	1	Grommet	Brass (copper + zinc)				Complete	
432.5E 477.5N-1-2	2	Unidentified Object	iron				Incomplete	
432.5E 477.5N-1-2	1	washer	Steel				Complete	
432.5E 477.5N-1-2	1	Unidentified Object	iron				Incomplete	
432.5E 477.5N-1-2	1	Staple	iron				Complete	
432.5E 477.5N-1-2	14	Cut nail	Iron				Incomplete	
432.5E 477.5N-1-2	12	wire	Steel				Incomplete	
432.5E 477.5N-1-2	3	Bird bone	Bone				Incomplete	
432.5E 477.5N-1-2	5	Mammal bone	bone				Incomplete	
432.5E 477.5N-1-2	4	coal	coal					
432.5E 477.5N-1-2	2	Sample	Brick					
432.5E 477.5N-1-2	1	Sample	Mortar					
432.5E 477.5N-3	2	Tableware unspecified	Vitrified White Earthenware		Plain	Colourless	Incomplete	
432.5E 477.5N-3	13	Tableware unspecified	Vitrified White Earthenware		Plain	Colourless	Incomplete	
432.5E 477.5N-3	4	Holloware unspecified	Vitrified White Earthenware		Moulded unspecified	Colourless	Incomplete	
432.5E 477.5N-3	1	Teacup	Hard Paste European/English Porcelain	rim	Gilt band	Colourless	Incomplete	
432.5E 477.5N-3	2	Holloware unspecified	Vitrified White Earthenware		Plain	Colourless	Burned / Melted	
432.5E 477.5N-3	3	Shoe	Composite Materials	sole			Incomplete	
432.5E 477.5N-3	8	Eyelet / grommet	Brass (copper + zinc)				Complete	
432.5E 477.5N-3	1	Button	Porcelain unspecified				Incomplete	
432.5E 477.5N-3	1	button	Copper Alloy		Stamped decoration		Incomplete	
432.5E 477.5N-3	1	Pharmaceutical / toiletry bottle	Amber/Brown Glass				Complete	MACHINE MADE BOTTLE
432.5E 477.5N-3	1	Case bottle	Green Glass (dark olive)	body			Incomplete	
432.5E 477.5N-3	5	Wine bottle	Green Glass (dark olive)	body			Incomplete	
432.5E 477.5N-3	5	Case bottle	Green Glass (light)	body			Incomplete	
432.5E 477.5N-3	4	Beer bottle	Amber/Brown Glass	body			Incomplete	
432.5E 477.5N-3	2	Bottle unidentified	Colourless Glass	body			Incomplete	
432.5E 477.5N-3	11	Bottle unidentified	Colourless Glass				Incomplete	
432.5E 477.5N-3	14	Pane glass	Colourless Glass					
432.5E 477.5N-3	1	Shovel D handle rivet	iron				complete	

Provenience	Quantity	Object	Material	Portion	Decorative Pattern	Decorative Colour	Condition	Primary Diagnostic
432.5E 477.5N-3	10	Cut nail	Iron				Incomplete	
432.5E 477.5N-3	13	wire	Steel				Incomplete	
432.5E 477.5N-3	1	Unidentified Object	Steel				Incomplete	
432.5E 477.5N-3	4	Unidentifiable (corroded lump etc.)	Iron					
432.5E 477.5N-3	2	Mammal bone	bone				Burned / Melted	
432.5E 477.5N-3	12	Mammal bone	bone				Incomplete	
432.5E 477.5N-3	3	coal	coal					
435E 460N-1	1	Tableware unspecified	Vitrified White Earthenware	body	Sponged	blue	Burned / Melted	
435E 460N-1	2	Tableware unspecified	Refined White Earthenware	body	Plain	Colourless	Incomplete	
435E 460N-1	3	Wine bottle	Green Glass (dark olive)	body			Incomplete	
435E 460N-1	2	Pane glass	Colourless Glass					
435E 460N-1	3	Mammal bone	bone				Butchered	
435E 465N-1	1	Tableware unspecified	Hard Paste European/English Porcelain	base	Plain	Colourless	Incomplete	
435E 465N-1	1	Tableware unspecified	Vitrified White Earthenware	rim	Unspecified Transfer	Green	Incomplete	
435E 465N-1	1	Container unspecified	Coarse Stoneware	body	Plain	buff	Incomplete	
435E 465N-1	2	Wine bottle	Green Glass (dark olive)	body			Incomplete	
435E 465N-1	1	Beverage bottle unspecified	Amber/Brown Glass	body			Incomplete	
435E 465N-1	1	Bottle unidentified	Colourless Glass	body			Incomplete	
435E 465N-1	4	Pane glass	Colourless Glass					
435E 465N-1	5	Cut nail	Iron				Incomplete	
435E 465N-1	1	Staple	Iron				Incomplete	
435E 465N-1	1	washer	iron				Complete	
435E 465N-1	1	nut	iron				Complete	
435E 470N-1	2	Cup unspecified	Hard Paste European/English Porcelain		Plain	Colourless	Incomplete	
435E 470N-1	1	Holloware unspecified	Soft Paste Porcelain	base	Gilt band	Colourless	Incomplete	
435E 470N-1	2	Tableware unspecified	Vitrified White Earthenware	rim	Sponged	blue	Incomplete	
435E 470N-1	2	Holloware unspecified	Vitrified White Earthenware		Moulded unspecified	Colourless	Incomplete	
435E 470N-1	6	Tableware unspecified	Refined White Earthenware		Plain	Colourless	Incomplete	
435E 470N-1	1	Container unspecified	Coarse Stoneware	body		buff	Incomplete	
435E 470N-1	1	Clay smoking pipe bowl	White Clay				Incomplete	
435E 470N-1	5	Beer bottle	Amber/Brown Glass				Incomplete	
435E 470N-1	2	Wine bottle	Green Glass (dark olive)	body			Incomplete	
435E 470N-1	7	Bottle unidentified	Colourless Glass				Incomplete	
435E 470N-1	1	Container unspecified	Solarized Glass Manganese Tint	body			Incomplete	
435E 470N-1	14	Pane glass	Colourless Glass					
435E 470N-1	1	bolt	Steel				Complete	

Provenience	Quantity	Object	Material	Portion	Decorative Pattern	Decorative Colour	Condition	Primary Diagnostic
435E 470N-1	10	Cut nail	iron				Incomplete	
435E 470N-1	1	Harness buckle	steel				Complete	
435E 470N-1	3	Mammal bone	bone				Incomplete	
435E 470N-1	3	coal	coal					
435E 475N-1	1	Holloware unspecified	Vitrified White Earthenware	rim	Painted unspecified	blue	Incomplete	
435E 475N-1	8	Tableware unspecified	Vitrified White Earthenware		Plain	Colourless	Incomplete	
435E 475N-1	1	Holloware unspecified	Vitrified White Earthenware	body		brown	Incomplete	
435E 475N-1	1	Tableware unspecified	Coarse Earthenware red	base	Plain	brown	Incomplete	
435E 475N-1	1	Tableware unspecified	Coarse Earthenware red	body	Plain	buff	Incomplete	
435E 475N-1	1	Lantern chimney	Colourless Glass	top				Machine crimped chimney
435E 475N-1	1	Beverage bottle unspecified	Colourless Glass	finish / rim			Complete	
435E 475N-1	4	Case bottle	Green Glass (dark olive)	body			Incomplete	
435E 475N-1	3	Case bottle	Green Glass				Incomplete	
435E 475N-1	4	Beer bottle	Amber/Brown Glass	body			Incomplete	
435E 475N-1	1	Bottle unidentified	Solarized Glass Manganese Tint	shoulder			Incomplete	
435E 475N-1	8	Bottle unidentified	Colourless Glass				Incomplete	
435E 475N-1	81	Pane glass	Colourless Glass					
435E 475N-1	2	Unidentified Object	Iron				Incomplete	
435E 475N-1	1	bracket	steel				Complete	
435E 475N-1	20	Cut nail	Iron					
435E 475N-1	1	staple	Iron				Complete	
435E 475N-1	1	screw	Steel				Complete	
435E 475N-1	5	wire	Steel				Incomplete	
435E 475N-1	2	Unidentified Object	Iron				Incomplete	
435E 475N-1	11	Mammal bone	bone				Incomplete	
435E 475N-1	4	Mammal bone	bone				Incomplete	
435E 475N-1	1	Bird bone	bone				Incomplete	
435E 475N-1	7	Tooth / teeth unspecified	Dentine (Tooth)					
435E 480N-1	2	Plate unspecified	Vitrified White Earthenware	rim	Impressed repetitive pattern unscaloped rim	blue	Incomplete	
435E 480N-1	4	plate	Vitrified White Earthenware	rim	Impressed repetitive pattern unscaloped rim	blue	Burned / Melted	
435E 480N-1	4	Bowl /individual service	Vitrified White Earthenware		Stamped	blue	Incomplete	
435E 480N-1	4	Bowl /individual service	Vitrified White Earthenware		Plain	Colourless	Incomplete	
435E 480N-1	2	Holloware unspecified	Vitrified White Earthenware	rim	Stamped	Purple	Incomplete	
435E 480N-1	17	Tableware unspecified	Vitrified White Earthenware		Plain	Colourless	Incomplete	
435E 480N-1	2	Holloware unspecified	Vitrified White Earthenware	body	Painted unspecified	blue	Incomplete	
435E 480N-1	2	Tableware unspecified	Refined White Earthenware	body	Unspecified Transfer	Black	Incomplete	
435E 480N-1	1	Tableware unspecified	Vitrified White Earthenware	body	Willow	blue	Incomplete	
435E 480N-1	1	Tableware unspecified	Refined White Earthenware	body	Stamped	blue	Incomplete	

Provenience	Quantity	Object	Material	Portion	Decorative Pattern	Decorative Colour	Condition	Primary Diagnostic
435E 480N-1	1	Tableware unspecified	Vitrified White Earthenware	base	Unspecified Transfer	Black	Incomplete	
435E 480N-1	1	Tableware unspecified	Vitrified White Earthenware	body	Stamped	Brown	Incomplete	
435E 480N-1	1	Holloware unspecified	Vitrified White Earthenware	body	Unspecified Transfer	brown	Incomplete	
435E 480N-1	3	Tableware unspecified	Vitrified White Earthenware	body	Floral generic	red	Incomplete	
435E 480N-1	1	Container	Coarse Stoneware	body		brown	Incomplete	Salt glaze
435E 480N-1	1	Bottle unidentified	Coarse Stoneware	base		brown	Incomplete	
435E 480N-1	6	Tableware unspecified	Coarse Earthenware red		Plain	mustard	Incomplete	
435E 480N-1	1	Clay smoking pipe stem	White Clay				Incomplete	
435E 480N-1	1	Clay smoking pipe stem	White Clay				Burned / Melted	W. & D. Bell Quebec City
435E 480N-1	4	Beer bottle	Amber/Brown Glass				Incomplete	
435E 480N-1	3	Beverage bottle unspecified	Blue/Green Glass (aqua)				Incomplete	
435E 480N-1	4	Wine bottle	Green Glass (dark olive)	body			Incomplete	
435E 480N-1	1	Case bottle	Green Glass	body			Incomplete	
435E 480N-1	1	Bottle unidentified	Green Glass	body			Incomplete	
435E 480N-1	3	Pharmaceutical / toiletry bottle	Blue Glass	body			Incomplete	
435E 480N-1	1	Tableware unspecified	Colourless Glass				Incomplete	Press moulded (lime glass)
435E 480N-1	18	Pane glass	Colourless Glass					
435E 480N-1	1	Lice comb	Bakelite (phenol -formaldehyde resin)				Incomplete	
435E 480N-1	22	Cut nail	Iron				Incomplete	
435E 480N-1	2	bolt	Steel				Complete	
435E 480N-1	1	washer	Steel				Complete	
435E 480N-1	2	Unidentified Object	iron				Incomplete	
435E 480N-1	1	Pot handle	Iron				Complete	
435E 480N-1	3	Unidentified Object	Iron				Incomplete	
435E 480N-1	10	Mammal bone	bone				Incomplete	
435E 480N-1	3	Mammal bone	bone				Burned / Melted	
435E 480N-1	6	Mammal bone	bone				Calcined	
435E 480N-1	1	Tooth / teeth unspecified	Dentine (Tooth)				Incomplete	
435E 480N-1	1	coal	coal					
435E 480N-1	3	Clinker (spent fuel)	Clinker					
435E 480N-2	9	Tableware unspecified	Vitrified White Earthenware		Willow	blue	Incomplete	
435E 480N-2	6	Container	Coarse Stoneware			brown	Incomplete	Salt glaze
435E 480N-2	1	Tooth / teeth unspecified	Dentine (Tooth)				Incomplete	
435E 485N-1	3	Tableware unspecified	Refined White Earthenware		Plain	Colourless	Incomplete	
435E 485N-1	1	Tableware unspecified	Vitrified White Earthenware	rim	Painted unspecified	red	Incomplete	
435E 485N-1	1	Tableware unspecified	Hard Paste European/English Porcelain	body	Plain	Colourless	Incomplete	



Provenience	Quantity	Object	Material	Portion	Decorative Pattern	Decorative Colour	Condition	Primary Diagnostic
435E 485N-1	3	Cut nail	iron				Incomplete	
435E 485N-1	1	washer	Iron				Complete	
435E 485N-1	2	Mammal bone	bone				Incomplete	
437.5E 457.5N-1	1	Holloware unspecified	Vitrified White Earthenware	rim	Banded	Green	Incomplete	
437.5E 457.5N-1	1	Tableware unspecified	Vitrified White Earthenware	rim	Unspecified Transfer	Green	Incomplete	
437.5E 457.5N-1	1	Wine bottle	Green Glass (dark olive)	body			Incomplete	
437.5E 457.5N-1	1	Unidentified Object	Iron				Incomplete	
437.5E 457.5N-1	1	Cut nail	iron				Incomplete	
437.5E 457.5N-1	2	wire	Steel				Incomplete	
437.5E 467.5N-1	1	Tableware unspecified	Vitrified White Earthenware	rim	Wheat / Ceres	Colourless	Incomplete	
437.5E 467.5N-1	2	Holloware unspecified	Vitrified White Earthenware		Plain	Colourless	Incomplete	
437.5E 467.5N-1	1	Wine bottle	Green Glass	body			Incomplete	
437.5E 467.5N-1	1	Beer bottle	Amber/Brown Glass	body			Incomplete	
437.5E 467.5N-1	4	Bottle unidentified	Colourless Glass				Incomplete	
437.5E 467.5N-1	5	Pane glass	Colourless Glass					
437.5E 467.5N-1	6	Cut nail	Iron				Incomplete	
437.5E 467.5N-1	1	Unidentified Object	iron				Incomplete	
437.5E 467.5N-1	2	Mammal bone	bone				Incomplete	
437E 462N-1	9	Tableware unspecified	Refined White Earthenware		Impressed repetitive pattern unscaloped rim	blue	Incomplete	
437E 462N-1	1	Holloware unspecified	Refined White Earthenware	body	Unspecified Transfer	brown	Incomplete	
437E 462N-1	2	Holloware unspecified	Vitrified White Earthenware		Moulded unspecified	Colourless	Incomplete	
437E 462N-1	1	Unidentified Object	Vitrified White Earthenware		Plain	Colourless	Incomplete	
437E 462N-1	2	Wine bottle	Green Glass (dark olive)	body			Incomplete	
437E 462N-1	2	Bottle unidentified	Colourless Glass	body			Incomplete	
437E 462N-1	1	Mammal bone	bone				Incomplete	
440E 455N-1	1	Holloware unspecified	Vitrified White Earthenware	rim	Moulded unspecified	Colourless	Incomplete	
440E 455N-1	1	Wine bottle	Green Glass (dark olive)	body			Incomplete	
440E 455N-1	1	Bottle unidentified	Blue/Green Glass (aqua)	neck			Incomplete	
440E 455N-1	1	Bottle unidentified	Amber/Brown Glass	body			Incomplete	
440E 455N-1	4	Pane glass	Colourless Glass					
440E 460N-1	3	Tableware unspecified	Refined White Earthenware		Plain	Colourless	Incomplete	
440E 460N-1	4	Case bottle	Green Glass (dark olive)				Incomplete	
440E 460N-1	1	Wine bottle	Green Glass (dark olive)	body			Incomplete	
440E 460N-1	1	Bottle unidentified	Colourless Glass	shoulder			Incomplete	
440E 460N-1	5	Pane glass	Colourless Glass					
440E 460N-1	1	nut	Iron				Complete	
440E 460N-1	3	Cut nail	iron				Incomplete	
440E 460N-1	1	Mammal bone	bone				Incomplete	
440E 465N-1	1	Tableware unspecified	Vitrified White Earthenware	body	Unspecified Transfer	blue	Incomplete	
440E 465N-1	1	Tableware unspecified	Vitrified White Earthenware	base	Plain	Colourless	Incomplete	

Provenience	Quantity	Object	Material	Portion	Decorative Pattern	Decorative Colour	Condition	Primary Diagnostic
440E 465N-1	2	Beer bottle	Amber/Brown Glass				Incomplete	
440E 465N-1	1	Tableware unspecified	Colourless Glass	body	flutes		Incomplete	
440E 465N-1	4	Bottle unidentified	Colourless Glass				Incomplete	
440E 465N-1	3	Pane glass	Colourless Glass					
440E 465N-1	1	Hook (hook & eye)	iron				Incomplete	
440E 465N-1	7	Cut nail	iron				Incomplete	
440E 465N-1	1	Slate board	slate				Incomplete	
440E 465N-1	3	coal						
440E 465N-1	2	Sample	brick				Incomplete	
440E 465N-1	1	sample	Mortar					
440E 470N-1	1	Lemon squeezer	Colourless Glass				Incomplete	
440E 470N-1	2	Bottle unidentified	Colourless Glass				Incomplete	
440E 470N-1	1	Cut nail	Iron				Incomplete	
440E 470N-1	1	Harness buckle	Steel				Complete	
440E 470N-1	1	coal						
442.5E 462.5N-1	3	Holloware unspecified	Vitrified White Earthenware		Plain	Colourless	Incomplete	
442.5E 462.5N-1	1	Bottle unidentified	Amber/Brown Glass	body			Incomplete	
442.5E 462.5N-1	1	Case bottle	Green Glass (dark olive)	body			Incomplete	
442.5E 462.5N-1	1	Pane glass	Colourless Glass					
442.5E 462.5N-1	2	Cut nail	Iron				Incomplete	
442.5E 462.5N-1	1	Unidentifiable (corroded lump etc.)	Iron					
445E 455N-1	1	Tableware unspecified	Vitrified White Earthenware	base	Sponged	blue	Incomplete	
445E 455N-1	1	Tableware unspecified	Vitrified White Earthenware	base	Plain	Colourless	Incomplete	
445E 455N-1	1	Unidentified Object	White Glass translucent				Incomplete	
445E 455N-1	1	Bottle unidentified	Colourless Glass	body			Incomplete	
445E 455N-1	1	Case bottle	Green Glass	body			Incomplete	
445E 455N-1	1	Cut nail	Iron				Incomplete	
445E 455N-1	1	Unidentifiable (corroded lump etc.)	iron				Incomplete	
445E 460N-1	1	Holloware unspecified	Vitrified White Earthenware	body	Plain	Colourless	Incomplete	
445E 460N-1	1	Tableware unspecified	Refined White Earthenware	body	Sponged	blue	Incomplete	
445E 460N-1	2	Pane glass	Colourless Glass					
445E 460N-1	1	Slate board	slate				Incomplete	
445E 460N-1	2	Mammal bone	bone				Incomplete	
445E 460N-1	2	Cut nail	Iron				Incomplete	
445E 460N-1	1	Bolt	Iron				Complete	
445E 460N-1	1	wire	steel				Incomplete	
445E 465N-1	1	Holloware unspecified	Vitrified White Earthenware	body	Plain	Colourless	Incomplete	
445E 465N-1	2	Tableware unspecified	Refined White Earthenware		Moulded unspecified	Colourless	Incomplete	
445E 465N-1	2	Wine bottle	Green Glass (dark olive)				Incomplete	

Provenience	Quantity	Object	Material	Portion	Decorative Pattern	Decorative Colour	Condition	Primary Diagnostic
445E 465N-1	2	Bottle unidentified	Colourless Glass	body			Incomplete	
445E 465N-1	8	Cut nail	Iron				Incomplete	
445E 470N-1	1	Bowl unspecified	Refined White Earthenware	base	Plain	Colourless	Incomplete	
445E 470N-1	2	Tableware unspecified	Vitrified White Earthenware		Plain	Colourless	Incomplete	
445E 470N-1	1	Holloware unspecified	Yellowware	rim	Plain	yellow	Incomplete	
445E 470N-1	1	Clay smoking pipe (functionally complete)	White Clay	stem			Incomplete	
445E 470N-1	3	Cut nail	iron					
445E 470N-1	1	Mammal bone	bone				Incomplete	
445E 470N-1	1	Sample	Mortar					
447.5E 462.5N-1	1	Holloware unspecified	Fine Stoneware unspecified	body	Unspecified Transfer	green	Incomplete	
447.5E 462.5N-1	1	Tableware unspecified	Vitrified White Earthenware	body	Plain	Colourless	Incomplete	
447.5E 462.5N-1	1	Tableware unspecified	Yellowware	body	Plain	Yellow	Incomplete	
447.5E 462.5N-1	1	Container unspecified	Coarse Earthenware red	rim			Incomplete	
447.5E 462.5N-1	1	Bottle unidentified	Colourless Glass	shoulder			Incomplete	
447.5E 462.5N-1	2	Cut nail	Iron				Incomplete	
447.5E 462.5N-1	1	Castor / part	steel				Complete	
447.5E 467.5N-1	5	Tableware unspecified	Vitrified White Earthenware		Plain	Colourless	Incomplete	
447.5E 467.5N-1	1	Tableware unspecified	Vitrified White Earthenware	body	Unspecified Transfer	blue	Incomplete	Flow transfer
447.5E 467.5N-1	1	Liquor bottle	Green Glass	finish / rim			Incomplete	
447.5E 467.5N-1	1	Case bottle	Green Glass (dark olive)	body			Incomplete	
447.5E 467.5N-1	1	Bottle unidentified	Colourless Glass	neck			Incomplete	
447.5E 467.5N-1	1	Pharmaceutical / toiletry bottle	Blue Glass (dark)	base			Incomplete	
447.5E 467.5N-1	1	container	Lead Glass	base			Incomplete	Press moulded (lead glass)
447.5E 467.5N-1	8	Cut nail	Iron				Incomplete	
447.5E 467.5N-1	1	Unidentifiable (corroded lump etc.)	Iron					
447.5E 467.5N-1	1	wire	Steel				Incomplete	
447.5E 467.5N-1	4	Pane glass	Colourless Glass					
447.5E 467.5N-1	1	coal	coal					
450E 455N-1	2	Holloware unspecified	Vitrified White Earthenware	body	Stamped	red	Incomplete	
450E 455N-1	2	Bottle unidentified	Colourless Glass	body			Incomplete	
450E 455N-1	1	Pane glass	Colourless Glass					
450E 455N-1	1	Eye (hook & eye)	iron				Incomplete	
450E 455N-1	1	Cut nail	iron				Incomplete	
450E 460N-1	2	Holloware unspecified	Vitrified White Earthenware	body	Plain	Colourless	Incomplete	
450E 460N-1	1	Tableware unspecified	Refined White Earthenware	base	Plain	Colourless	Incomplete	
450E 460N-1	1	Container unspecified	Colourless Glass				Incomplete	
450E 460N-1	1	Unidentifiable (corroded lump etc.)	Colourless Glass				Burned / Melted	

Provenience	Quantity	Object	Material	Portion	Decorative Pattern	Decorative Colour	Condition	Primary Diagnostic
450E 460N-1	1	Cut nail	Iron				Incomplete	
450E 460N-1	1	Mammal bone	bone				Incomplete	
450E 460N-1	1	Tooth / teeth unspecified	Dentine (Tooth)					
450E 465N-1	1	Holloware unspecified	Yellowware	body	Plain	Yellow	Incomplete	
450E 465N-1	1	Wine bottle	Green Glass (dark olive)	finish / rim			Incomplete	
450E 465N-1	2	Pane glass	Colourless Glass					
450E 465N-1	3	Cut nail	Iron				Incomplete	
450E 465N-1	1	bolt	iron				Complete	
450E 465N-1	1	Unidentifiable (corroded lump etc.)	Iron					
450E 470N-1	2	Holloware unspecified	Refined White Earthenware	body	Unspecified Transfer	blue	Incomplete	Flow transfer
450E 470N-1	1	Tableware unspecified	Refined White Earthenware	rim	Impressed repetitive pattern unscaloped rim	blue	Incomplete	
450E 470N-1	1	Tableware unspecified	Vitrified White Earthenware	body	Sponged	blue	Incomplete	
450E 470N-1	1	Tableware unspecified	Refined White Earthenware	body	Painted unspecified	green	Incomplete	
450E 470N-1	2	Tableware unspecified	Refined White Earthenware		Plain	Colourless	Incomplete	
450E 470N-1	1	Tableware unspecified	Vitrified White Earthenware	footring	Plain	Colourless	Incomplete	
450E 470N-1	1	Tableware unspecified	Yellowware	body	Plain	Yellow	Incomplete	
450E 470N-1	3	Container unspecified	Coarse Earthenware red		Plain	buff	Incomplete	
450E 470N-1	1	Bottle unidentified	Blue/Green Glass (aqua)	body			Incomplete	
450E 470N-1	1	Unidentified Object	White Glass translucent				Incomplete	
450E 470N-1	1	Salt / pepper shaker lid	Aluminum				Complete	
450E 470N-1	1	Mammal bone	bone				Incomplete	
450E 470N-1	3	Cut nail	iron				Incomplete	
450E 470N-1	1	Unidentifiable (corroded lump etc.)	Iron					
452.5E 462.5N-1	1	Tableware unspecified	Vitrified White Earthenware	body	Unspecified Transfer	Red	Incomplete	
452.5E 462.5N-1	1	Case bottle	Green Glass (dark olive)	body			Incomplete	
452.5E 462.5N-1	2	Pane glass	Colourless Glass					
452.5E 462.5N-1	2	Cut nail	iron				Incomplete	
452.5E 462.5N-1	2	Unidentifiable (corroded lump etc.)	Iron					
452.5E 462.5N-1	1	Mammal bone	Bone				Incomplete	
455E 455N-1	1	Tableware unspecified	Refined White Earthenware	base	Plain	Colourless	Incomplete	
455E 455N-1	3	Pane glass	Colourless Glass					
455E 460N-1	1	Holloware unspecified	Vitrified White Earthenware	body	Unspecified Transfer	Green	Incomplete	
455E 460N-1	1	Holloware unspecified	Vitrified White Earthenware	body	Unspecified Transfer	red	Incomplete	
455E 460N-1	1	Tableware unspecified	Refined White Earthenware	rim	Plain	Colourless	Incomplete	
455E 460N-1	1	Unidentified Object	Coarse Earthenware red				Incomplete	
455E 460N-1	1	Bottle unidentified	Colourless Glass	shoulder			Incomplete	
455E 460N-1	1	Bottle unidentified	Colourless Glass	shoulder			Incomplete	

Provenience	Quantity	Object	Material	Portion	Decorative Pattern	Decorative Colour	Condition	Primary Diagnostic
455E 460N-1	1	Pane glass	Colourless Glass					
455E 460N-1	1	Bottle unidentified	Colourless Glass				Burned / Melted	
455E 460N-1	3	Cut nail	iron				Incomplete	
455E 460N-1	2	Unidentifiable (corroded lump etc.)	iron					
455E 465N-1	1	Holloware unspecified	Yellowware	body	Plain	Yellow	Incomplete	
455E 465N-1	1	Tableware unspecified	Vitrified White Earthenware	rim	Unspecified Transfer	Green	Incomplete	
455E 465N-1	1	Tableware unspecified	Vitrified White Earthenware	body	Unspecified Transfer	blue	Incomplete	
455E 465N-1	1	Tableware unspecified	Vitrified White Earthenware	body	Plain	Colourless	Incomplete	
455E 465N-1	1	Tableware unspecified	Colourless Glass	base			Complete	
455E 465N-1	1	Bottle unidentified	Colourless Glass	base			Incomplete	
455E 465N-1	1	Pharmaceutical / toiletry bottle	Blue Glass (light)	finish / rim			Complete	
455E 465N-1	1	Salt / pepper shaker	Colourless Glass	body			Incomplete	
455E 465N-1	4	Pane glass	Colourless Glass					
455E 465N-1	4	Cut nail	Iron					
455E 470N-1	1	Holloware unspecified	Hard Paste European/English Porcelain	body	Plain	Colourless	Incomplete	
455E 470N-1	2	Tableware unspecified	Refined White Earthenware	body	Plain	Colourless	Incomplete	
455E 470N-1	1	Wine bottle	Green Glass (dark)	body			Incomplete	
455E 470N-1	1	Pharmaceutical / toiletry bottle	Blue Glass (dark)	base			Incomplete	
455E 470N-1	1	cut spike	iron				Complete	
455E 470N-1	7	Cut nail	Iron				Incomplete	
457.5E 467.5N-1	1	Tableware unspecified	Vitrified White Earthenware	base	Plain	Colourless	Incomplete	
457.5E 467.5N-1	1	Container unspecified	Coarse Earthenware red	body			Incomplete	
457.5E 467.5N-1	1	Pharmaceutical / toiletry bottle	Blue Glass (dark)	neck			Incomplete	
457.5E 467.5N-1	2	Bottle unidentified	Colourless Glass	body			Incomplete	
457.5E 467.5N-1	1	Pane glass	Colourless Glass					
457.5E 467.5N-1	1	Unidentified Object	Iron				Incomplete	
457.5E 467.5N-1	4	Cut nail	Iron				Incomplete	
457.5E 467.5N-1	1	Staple	iron				Incomplete	
460E 455N-1	1	Tableware unspecified	Vitrified White Earthenware	rim	Unspecified Transfer	blue	Incomplete	
460E 455N-1	1	Bottle unidentified	Solarized Glass Manganese Tint	base			Incomplete	
460E 455N-1	1	Container unspecified	Colourless Glass	shoulder			Incomplete	
460E 455N-1	1	Bottle unidentified	Colourless Glass	shoulder			Incomplete	
460E 455N-1	1	Jewelry	Copper Alloy				Incomplete	
460E 455N-1	3	Cut nail	Iron				Incomplete	
460E 455N-1	2	Mammal bone	bone				Incomplete	
460E 465N-1	1	Tableware unspecified	yellowware	body	Plain		Incomplete	
460E 465N-1	2	Unidentified Object	Coarse Earthenware red				Incomplete	
460E 465N-1	3	Wine bottle	Green Glass (dark olive)	body			Incomplete	

Provenience	Quantity	Object	Material	Portion	Decorative Pattern	Decorative Colour	Condition	Primary Diagnostic
460E 465N-1	1	Unidentified Object	White Glass translucent				Incomplete	
460E 465N-1	1	Bottle unidentified	Solarized Glass Manganese Tint	body			Incomplete	
460E 465N-1	1	Case bottle	Colourless Glass	body			Incomplete	
460E 465N-1	11	Pane glass	Colourless Glass					
460E 465N-1	4	Cut nail	Iron				Incomplete	
460E 465N-1	1	bolt	iron				Complete	
460E 470N-1	1	Tableware unspecified	Refined White Earthenware	body	Plain	Colourless	Incomplete	
460E 470N-1	1	Tableware unspecified	Vitrified White Earthenware	body	Plain	Colourless	Incomplete	
460E 470N-1	1	Bottle unidentified	Colourless Glass	body			Incomplete	
460E 470N-1	1	Pane glass	Colourless Glass				Incomplete	
460E 470N-1	1	Cut nail	Iron				Incomplete	
460E 470N-1	7	Mammal bone	bone				Incomplete	
460E 475N-1	1	Tableware unspecified	Hard Paste European/English Porcelain		Plain	Colourless	Incomplete	
460E 475N-1	2	Tableware unspecified	Vitrified White Earthenware	body	Plain	Colourless	Incomplete	
460E 475N-1	1	Tableware unspecified	Refined White Earthenware	body	Plain	Colourless	Incomplete	
460E 475N-1	1	Case bottle	Green Glass (dark olive)	body			Incomplete	
460E 475N-1	1	Beer bottle	Amber/Brown Glass	body			Incomplete	
460E 475N-1	6	Bottle unidentified	Colourless Glass				Incomplete	
460E 475N-1	4	Container unspecified	Colourless Glass				Incomplete	
460E 475N-1	3	Pane glass	Colourless Glass					
460E 475N-1	1	Canadian .05 cent coin	Nickel				Complete	
460E 475N-1	17	Cut nail	iron					
460E 475N-1	1	wire	steel					
460E 475N-1	1	Mammal bone	bone				Incomplete	
462.5E 462.5N-1	3	Cut nail	iron				Incomplete	
462.5E 467.5N-1	1	Holloware unspecified	Vitrified White Earthenware	footring	Plain	Colourless	Incomplete	
462.5E 467.5N-1	1	Tableware unspecified	Refined White Earthenware	body	Plain	Colourless	Incomplete	
462.5E 467.5N-1	1	Bottle unidentified	Amber/Brown Glass	base			Incomplete	
462.5E 467.5N-1	1	Wine bottle	Green Glass (dark olive)	body			Incomplete	
462.5E 467.5N-1	4	Cut nail	iron				Incomplete	
462.5E 467.5N-1	2	wire	Steel				Incomplete	
465E 455N-1	1	Holloware unspecified	Hard Paste European/English Porcelain	body	Plain	Colourless	Incomplete	
465E 455N-1	1	Bottle unidentified	Coarse Stoneware	shoulder			Incomplete	
465E 455N-1	1	Bottle unidentified	Colourless Glass	body			Incomplete	
465E 455N-1	2	Cut nail	iron				Incomplete	
465E 460N-1	1	Tableware unspecified	Vitrified White Earthenware	body	Sponged	blue	Incomplete	
465E 460N-1	1	Tableware unspecified	Refined White Earthenware	rim	Impressed repetitive pattern unscaloped rim	Colourless	Incomplete	
465E 460N-1	1	Beverage bottle unspecified	Amber/Brown Glass	shoulder			Incomplete	

Provenience	Quantity	Object	Material	Portion	Decorative Pattern	Decorative Colour	Condition	Primary Diagnostic
465E 460N-1	1	Container unspecified	Coarse Stoneware	body		Black	Incomplete	
465E 460N-1	1	Container unspecified	Coarse Earthenware red	body			Incomplete	
465E 460N-1	2	Cut nail	iron				Incomplete	
465E 460N-1	1	bolt	Steel				Complete	
465E 465N-1	1	Holloware unspecified	Vitrified White Earthenware	body	Plain	Colourless	Incomplete	
465E 465N-1	1	Container unspecified	Coarse Stoneware	body	Plain	brown	Incomplete	
465E 465N-1	1	Container unspecified	Coarse Earthenware red	body	plain	brown	Incomplete	Jackfield type 19th century
465E 465N-1	3	Cut nail	iron				Incomplete	
465E 465N-1	3	Mammal bone	bone				Incomplete	
465E 465N-1	1	coal	coal					
465E 470N-1	1	Tableware unspecified	Hard Paste European/English Porcelain	base	Plain	Colourless	Incomplete	
465E 470N-1	1	Tableware unspecified	Refined White Earthenware	body	Plain	Colourless	Incomplete	
465E 470N-1	1	Container unspecified	Coarse Earthenware red	body			Incomplete	
465E 470N-1	1	Bottle unidentified	Colourless Glass	body			Incomplete	
465E 470N-1	1	bolt	iron				Complete	
465E 470N-1	2	Unidentified Object	Iron				Incomplete	
465E 470N-1	10	Cut nail	iron					
465E 470N-1	1	Staple	iron				Incomplete	
465E 470N-1	1	Mammal bone	bone				Incomplete	
470E 465N-1	1	Tableware unspecified	Vitrified White Earthenware	body	Plain	Colourless	Incomplete	
470E 465N-1	1	Bottle unidentified	Colourless Glass	body			Incomplete	
470E 465N-1	2	Cut nail	iron					
470E 470N-1	1	Tableware unspecified	Hard Paste European/English Porcelain	rim	Plain	Colourless	Incomplete	
470E 470N-1	1	Tableware unspecified	Vitrified White Earthenware	body	Plain	Colourless	Incomplete	
470E 470N-1	2	Tableware unspecified	Refined White Earthenware		Plain	Colourless	Incomplete	
470E 470N-1	1	Case bottle	Green Glass (dark olive)	body			Incomplete	
470E 470N-1	1	Container unspecified	Blue/Green Glass (aqua)	rim			Incomplete	
470E 470N-1	2	Cut nail	iron				Incomplete	
470E 470N-1	1	Bird bone	bone				Incomplete	
470E 475N-1	2	Holloware unspecified	Hard Paste European/English Porcelain	body	Plain	Colourless	Incomplete	
470E 475N-1	2	Tableware unspecified	Vitrified White Earthenware		Moulded	Colourless	Incomplete	
470E 475N-1	1	Wine bottle	Green Glass (dark olive)	shoulder			Incomplete	
470E 475N-1	2	Case bottle	Amber/Brown Glass	body			Incomplete	
470E 475N-1	1	Bottle unidentified	Green Glass (light)	body			Incomplete	
470E 475N-1	5	Pane glass	Colourless Glass					
470E 475N-1	1	Cut spike	iron				Complete	
470E 475N-1	1	bolt	Steel				Complete	

Provenience	Quantity	Object	Material	Portion	Decorative Pattern	Decorative Colour	Condition	Primary Diagnostic
470E 475N-1	5	Cut nail	iron					
470E 475N-1	3	Sample	Brick				Incomplete	
472.5E 467.5N-1	2	Tableware unspecified	Vitrified White Earthenware		Plain	Colourless	Incomplete	
472.5E 467.5N-1	1	container	Colourless Glass	body			Incomplete	
472.5E 467.5N-1	2	Pane glass	Colourless Glass					
472.5E 467.5N-1	2	Cut nail	Iron				Incomplete	
472.5E 467.5N-1	1	washer	Steel				Complete	
472.5E 467.5N-1	1	coal						
475E 465N-1	1	Tableware unspecified	Vitrified White Earthenware	rim	Wheat / Ceres	Colourless	Incomplete	
475E 465N-1	3	Holloware unspecified	Vitrified White Earthenware	body	Plain	Colourless	Incomplete	
475E 465N-1	1	Tableware unspecified	Vitrified White Earthenware	base	Plain	Colourless	Incomplete	
475E 465N-1	1	Case bottle	Green Glass (dark olive)	body			Incomplete	
475E 465N-1	2	Pane glass	Colourless Glass					
475E 465N-1	2	Cut nail	Iron				Incomplete	
475E 470N-1	1	Tableware unspecified	Vitrified White Earthenware	body	Plain	Colourless	Incomplete	
475E 470N-1	3	Wine bottle	Green Glass	body			Incomplete	
475E 470N-1	2	Bottle unidentified	Colourless Glass	body			Incomplete	
475E 470N-1	3	Cut nail	iron					
475E 470N-1	2	wire	iron				Incomplete	
475E 470N-1	1	Unidentified Object	iron				Incomplete	
475E 475N-1	1	Tableware unspecified	Soft Paste Porcelain	rim	Floral generic		Incomplete	
475E 475N-1	1	Holloware unspecified	Hard Paste European/English Porcelain	body	Plain	Colourless	Incomplete	
475E 475N-1	2	Tableware unspecified	Vitrified White Earthenware	body	Unspecified Transfer	red	Incomplete	
475E 475N-1	5	Tableware unspecified	Refined White Earthenware		Plain	Colourless	Incomplete	
475E 475N-1	2	Container unspecified	Coarse Stoneware	body		Gray	Incomplete	
475E 475N-1	1	Case bottle	Green Glass (dark olive)	body			Incomplete	
475E 475N-1	1	Wine bottle	Green Glass (dark olive)	body			Incomplete	
475E 475N-1	1	Bottle unidentified	Green Glass	body			Incomplete	
475E 475N-1	1	Beverage bottle unspecified	Green Glass (light)					
475E 475N-1	1	Bottle unidentified	Colourless Glass	base			Incomplete	MACHINE MADE BOTTLE
475E 475N-1	2	Container unspecified	Colourless Glass	body			Incomplete	
475E 475N-1	1	Container unspecified	White Glass translucent	body			Incomplete	
475E 475N-1	4	Pane glass	Colourless Glass					
475E 475N-1	1	Slate pencil	slate				Incomplete	
475E 475N-1	1	Cut spike	Iron				Complete	
475E 475N-1	7	Cut nail	iron				Incomplete	
475E 475N-1	2	wire	steel					
475E 475N-1	2	Unidentified Object	iron				Incomplete	
475E 475N-1	2	Mammal bone	bone				Incomplete	



Provenience	Quantity	Object	Material	Portion	Decorative Pattern	Decorative Colour	Condition	Primary Diagnostic
480E 470N-1	1	Holloware unspecified	Hard Paste European/English Porcelain	rim	Plain	Colourless	Incomplete	
480E 470N-1	1	Wine bottle	Green Glass (dark olive)	body			Incomplete	
480E 470N-1	1	Slate pencil	slate				Incomplete	
480E 470N-1	1	Cut nail	iron					
480E 470N-1	1	Unidentified Object	iron					
480E 475N-1	4	Holloware unspecified	Hard Paste European/English Porcelain		Plain	Colourless	Incomplete	
480E 475N-1	1	Tableware unspecified	Hard Paste European/English Porcelain	body	Plain	Yellow	Incomplete	
480E 475N-1	5	Tableware unspecified	Vitrified White Earthenware		Plain	Colourless	Incomplete	
480E 475N-1	8	Tableware unspecified	Refined White Earthenware		Plain	Colourless	Incomplete	
480E 475N-1	1	Tableware unspecified	Refined White Earthenware	body	Unspecified Transfer	blue	Incomplete	Flow transfer
480E 475N-1	1	Holloware unspecified	Vitrified White Earthenware	body	Stamped	Brown	Incomplete	
480E 475N-1	2	Holloware unspecified	Vitrified White Earthenware	handle	Moulded unspecified	Colourless	Incomplete	
480E 475N-1	1	Holloware unspecified	Hard Paste European/English Porcelain	base	Plain	Colourless	Burned / Melted	
480E 475N-1	1	Container unspecified	Coarse Stoneware	body		brown	Incomplete	
480E 475N-1	1	Pharmaceutical / toiletry bottle	Solarized Glass Manganese Tint	finish / rim			Complete	BOTTLE FINISH / CLOSURE
480E 475N-1	9	Wine bottle	Green Glass (dark olive)				Incomplete	
480E 475N-1	1	Bottle unidentified	Colourless Glass	body			Incomplete	
480E 475N-1	5	Pharmaceutical / toiletry bottle	Blue/Green Glass (aqua)	body			Incomplete	
480E 475N-1	1	Bottle unidentified	Green Glass	body			Incomplete	
480E 475N-1	3	Container unspecified	Colourless Glass	body			Incomplete	
480E 475N-1	6	Pane glass	Colourless Glass					
480E 475N-1	1	bolt	iron				Complete	
480E 475N-1	1	nut	iron				Complete	
480E 475N-1	20	Cut nail	iron				Incomplete	
480E 475N-1	4	wire	steel					
480E 475N-1	1	Barbed wire	steel					
480E 475N-1	5	Unidentified Object	iron					
480E 475N-1	5	Mammal bone	Bone				Incomplete	
480E 475N-1	3	Sample	Brick				Incomplete	
485E 470N-1	1	Holloware unspecified	Vitrified White Earthenware	body	Plain	Colourless	Incomplete	
485E 470N-1	2	Holloware unspecified	Hard Paste European/English Porcelain	rim	Plain	Colourless	Incomplete	
485E 470N-1	2	Tableware unspecified	Refined White Earthenware	body	Plain	Colourless	Incomplete	
485E 470N-1	1	Pharmaceutical / toiletry bottle	Colourless Glass	finish / rim			Complete	Hand tooled bottle finish
485E 470N-1	3	Bottle unidentified	Colourless Glass				Incomplete	
485E 470N-1	4	Cut nail	iron				Incomplete	

Provenience	Quantity	Object	Material	Portion	Decorative Pattern	Decorative Colour	Condition	Primary Diagnostic
485E 470N-1	1	bolt	steel				Complete	
485E 470N-1	1	Unidentifiable (corroded lump etc.)	iron					
485E 470N-1	4	Mammal bone	bone				Incomplete	
485E 475N-1	1	Holloware unspecified	Hard Paste European/English Porcelain	base	Plain	Colourless	Incomplete	
485E 475N-1	3	Tableware unspecified	Vitrified White Earthenware		Plain	Colourless	Incomplete	
485E 475N-1	1	Tableware unspecified	Vitrified White Earthenware	body	Unspecified Transfer	red	Incomplete	
485E 475N-1	1	Tableware unspecified	Vitrified White Earthenware	body	Unspecified Transfer	blue	Incomplete	
485E 475N-1	1	Tableware unspecified	yellowware	body			Incomplete	Rockingham
485E 475N-1	1	Tableware unspecified	Coarse Earthenware buff	body	Plain	black	Incomplete	
485E 475N-1	1	Container unspecified	Coarse Stoneware	body		brown	Incomplete	
485E 475N-1	1	Container unspecified	Coarse Earthenware red	body			Incomplete	
485E 475N-1	1	Beverage bottle unspecified	Colourless Glass	base			Incomplete	
485E 475N-1	1	Jar	Colourless Glass	rim			Incomplete	
485E 475N-1	5	Container unspecified	Green Glass (light)				Incomplete	
485E 475N-1	2	Bottle unidentified	Colourless Glass	body			Incomplete	
485E 475N-1	1	Beverage bottle unspecified	Green Glass (light)	finish / rim			Incomplete	Hand tooled bottle finish
485E 475N-1	1	Case bottle	Green Glass (dark olive)	body			Incomplete	
485E 475N-1	2	Bottle unidentified	Amber/Brown Glass	body			Incomplete	
485E 475N-1	4	Bottle unidentified	Solarized Glass Manganese Tint				Incomplete	
485E 475N-1	1	Pharmaceutical / toiletry bottle	Blue Glass	body			Incomplete	
485E 475N-1	2	Pane glass	Colourless Glass					
485E 475N-1	1	Slate pencil	slate				Incomplete	
485E 475N-1	1	Unidentified Object	Copper Alloy				Incomplete	
485E 475N-1	12	Cut nail	Iron				Incomplete	
485E 475N-1	1	Unidentified Object	Iron				Incomplete	
485E 475N-1	3	Unidentifiable (corroded lump etc.)	iron				Incomplete	
485E 475N-1	1	Unidentified Object	iron				Incomplete	
485E 475N-1	15	Mammal bone	bone				Incomplete	
490E 470N-1	3	Tableware unspecified	Refined White Earthenware		Plain	Colourless		
490E 470N-1	2	Tableware unspecified	Vitrified White Earthenware	base	Plain	Colourless	Incomplete	
490E 470N-1	1	Holloware unspecified	Soft Paste Porcelain	body	Plain	Colourless	Incomplete	
490E 470N-1	1	Container unspecified	Coarse Stoneware	body		black	Incomplete	
490E 470N-1	2	Beer bottle	Amber/Brown Glass	body			Incomplete	
490E 470N-1	2	Case bottle	Green Glass (dark olive)	body			Incomplete	
490E 470N-1	1	jar	Colourless Glass	rim			Incomplete	
490E 470N-1	5	Beverage bottle unspecified	Colourless Glass	body			Incomplete	
490E 470N-1	2	Bottle unidentified	Solarized Glass Manganese Tint	body			Incomplete	

Provenience	Quantity	Object	Material	Portion	Decorative Pattern	Decorative Colour	Condition	Primary Diagnostic
490E 470N-1	1	Lantern chimney	Colourless Glass	body			Incomplete	
490E 470N-1	1	Pane glass	Colourless Glass					
490E 470N-1	1	Tool handle unidentified	iron	shank			Incomplete	
490E 470N-1	9	Cut nail	Iron					
490E 470N-1	4	Wire / drawn nail	Iron					
490E 470N-1	2	Unidentifiable (corroded lump etc.)	iron					
490E 470N-1	4	Mammal bone	bone				Incomplete	
490E 475N-1	11	Holloware unspecified	Vitrified White Earthenware		Plain	Colourless	Incomplete	
490E 475N-1	16	Tableware unspecified	Refined White Earthenware		Plain	Colourless	Incomplete	
490E 475N-1	2	Tableware unspecified	Hard Paste European/English Porcelain	body	Plain	Colourless	Incomplete	
490E 475N-1	1	Tableware unspecified	yellowware	body		brown	Incomplete	Rockingham
490E 475N-1	1	Wine bottle	Green Glass (dark olive)	finish / rim			Complete	Hand tooled bottle finish
490E 475N-1	3	Wine bottle	Green Glass (dark olive)	neck			Incomplete	
490E 475N-1	3	Case bottle	Green Glass (dark olive)	body			Incomplete	
490E 475N-1	5	Beverage bottle unspecified	Colourless Glass	body			Incomplete	
490E 475N-1	24	Bottle unidentified	Colourless Glass				Incomplete	
490E 475N-1	2	Pharmaceutical / toiletry bottle	Blue Glass				Incomplete	
490E 475N-1	7	Pane glass	Colourless Glass					
490E 475N-1	16	Cut nail	Iron					
490E 475N-1	3	Unidentifiable (corroded lump etc.)	Iron					
490E 475N-1	1	Mammal bone	Bone				Butchered	
490E 475N-1	3	Tooth / teeth unspecified	Dentine (Tooth)				Incomplete	
490E 475N-1	8	Mammal bone	bone				Incomplete	
490E 475N-1	3	Sample	brick				Incomplete	
495E 470N-1	2	Holloware unspecified	Vitrified White Earthenware		Plain	Colourless	Incomplete	
495E 470N-1	2	Wine bottle	Green Glass (dark olive)	body			Incomplete	
495E 470N-1	2	Beer bottle	Amber/Brown Glass	body			Incomplete	
495E 470N-1	1	Beverage bottle unspecified	Green/Yellow Glass (20th Century pop)	body			Incomplete	
495E 470N-1	1	Bottle unidentified	Solarized Glass Manganese Tint	body			Incomplete	
495E 470N-1	3	Beverage bottle unspecified	Colourless Glass	body			Incomplete	
495E 470N-1	1	Unidentified Object	White Glass opaque (milk)	body			Incomplete	
495E 470N-1	1	Pharmaceutical / toiletry bottle	Blue Glass	base			Incomplete	
495E 470N-1	1	Toy axle / tire / wheel	Plastic			Gray	Complete	
495E 470N-1	1	Unidentified Object	plastic			purple	Incomplete	
495E 470N-1	3	Cut nail	iron					
495E 470N-1	1	wire	iron					

Provenience	Quantity	Object	Material	Portion	Decorative Pattern	Decorative Colour	Condition	Primary Diagnostic
495E 470N-1	1	Unidentified Object	iron				Incomplete	
495E 470N-1	7	Mammal bone	bone				Incomplete	
495E 475N-1	7	Tableware unspecified	Refined White Earthenware		Plain	Colourless		
495E 475N-1	1	Tableware unspecified	Refined White Earthenware	body	Unspecified Transfer	blue		
495E 475N-1	1	Tableware unspecified	Vitrified White Earthenware	body	Stamped	Green		
495E 475N-1	5	Hollowware unspecified	Vitrified White Earthenware		Plain	Colourless		
495E 475N-1	7	Coffee cup	Soft Paste Porcelain		Plain	Colourless	Incomplete	
495E 475N-1	1	Container unspecified	Coarse Earthenware red	body	Plain	Yellow	Incomplete	
495E 475N-1	1	Container unspecified	Coarse Earthenware red	body				
495E 475N-1	1	Bottle unidentified	Blue/Green Glass (aqua)	shoulder				
495E 475N-1	4	Bottle unidentified	Colourless Glass	body				
495E 475N-1	7	Bottle unidentified	Colourless Glass				Incomplete	
495E 475N-1	4	Bottle unidentified	Solarized Glass Manganese Tint	body				
495E 475N-1	4	Wine bottle	Green Glass (dark olive)	body				
495E 475N-1	4	Beer bottle	Amber/Brown Glass	body				
495E 475N-1	4	Pane glass	Colourless Glass					
495E 475N-1	1	Flatware unspecified	Composite Materials	handle			Incomplete	
495E 475N-1	1	button	steel				Complete	
495E 475N-1	1	Wrought / forged nail	iron				Complete	
495E 475N-1	4	Cut nail	iron					
495E 475N-1	1	Staple	iron				Complete	
495E 475N-1	6	Unidentified Object	iron				Incomplete	
495E 475N-1	1	Unidentified Object	Composite Materials				Incomplete	
495E 475N-1	1	Unidentified Object	Copper Alloy				Incomplete	
495E 475N-1	11	Mammal bone	bone				Incomplete	
495E 475N-1	1	Bird bone	bone				Incomplete	
495E 475N-1	1	Tooth / teeth unspecified	Dentine (Tooth)				Incomplete	
495E 475N-1	5	coal	coal					
495E 475N-1	3	Clinker (spent fuel)	Clinker					
495E 475N-1	7	Unidentified Object	plastic					
495E 475N-1	1	screw	Aluminum				Incomplete	Phillips screw +
495E 475N-2	2	Beverage bottle unspecified	Green Glass	body			Incomplete	
495E 475N-3	1	Tableware unspecified	Vitrified White Earthenware	body	Plain	Colourless		
495E 475N-3	1	Cut nail	iron				Incomplete	
495E 475N-3	1	Unidentified Object	iron					
500E 470N-1	1	Tableware unspecified	Vitrified White Earthenware	body	Plain	Colourless	Incomplete	
500E 470N-1	1	Tableware unspecified	Refined White Earthenware	body	Unspecified Transfer	blue	Incomplete	
500E 470N-1	1	Wine bottle	Green Glass (dark olive)	body			Incomplete	
500E 470N-1	3	Beer bottle	Amber/Brown Glass	body			Incomplete	
500E 470N-1	1	Bottle unidentified	Colourless Glass	body			Incomplete	
500E 470N-1	1	Pharmaceutical / toiletry bottle	Blue Glass	body			Incomplete	

Provenience	Quantity	Object	Material	Portion	Decorative Pattern	Decorative Colour	Condition	Primary Diagnostic
500E 470N-1	3	Cut nail	iron				Incomplete	
500E 470N-1	3	Wire / drawn nail	Iron					
500E 470N-1	1	wire	iron					
500E 470N-1	1	staple	steel					
500E 470N-1	2	Mammal bone	Bone				Incomplete	
500E 470N-1	1	coal	coal					
500E 470N-1	2	Unidentified Object	plastic					
500E 475N-1	7	Tableware unspecified	Refined White Earthenware		Plain	Colourless		
500E 475N-1	2	Tableware unspecified	Vitrified White Earthenware	body	Plain	Colourless		
500E 475N-1	1	Tableware unspecified	Refined White Earthenware	body	Plain	Colourless	Burned / Melted	
500E 475N-1	1	Container unspecified	Coarse Stoneware	body		brown	Incomplete	
500E 475N-1	5	Bottle unidentified	Colourless Glass				Incomplete	
500E 475N-1	1	Tumbler	Colourless Glass	body	flutes		Incomplete	
500E 475N-1	1	Case bottle	Green Glass (dark olive)	body			Incomplete	
500E 475N-1	4	Wine bottle	Green Glass (dark olive)	body			Incomplete	
500E 475N-1	4	Beverage bottle unspecified	Green Glass (light)	body			Incomplete	
500E 475N-1	1	Beer bottle	Amber/Brown Glass	body			Incomplete	
500E 475N-1	2	Bottle unidentified	Solarized Glass Manganese Tint	body			Incomplete	
500E 475N-1	5	Pane glass	Colourless Glass					
500E 475N-1	3	Cut nail	Iron					
500E 475N-1	2	wire	Iron					
500E 475N-1	1	Unidentified Object	Iron				Incomplete	
500E 475N-1	1	Grommet	Copper Alloy				Complete	
500E 475N-1	13	Mammal bone	bone				Incomplete	
500E 475N-1	22	coal	coal					
500E 475N-1	2	Unidentified Object	plastic					
505E 475N-1	1	Container unspecified	Coarse Stoneware	body	Plain	brown		
505E 475N-1	1	Pane glass	Colourless Glass					
505E 475N-1	1	Unidentified Object	plastic				Incomplete	
505E 475N-1	2	Toy unspecified	plastic			red	Complete	
505E 475N-1	1	Automotive part	Steel					
505E 475N-1	1	bolt	iron	eye			Incomplete	
505E 510N-1	1	Holloware unspecified	Vitrified White Earthenware	rim	Plain	Colourless	Incomplete	
505E 510N-1	1	Tableware unspecified	Soft Paste Porcelain	body	Plain	Colourless	Incomplete	
505E 510N-1	1	Bottle unidentified	Solarized Glass Manganese Tint	body			Incomplete	
510E 475N-1	3	Beverage bottle unspecified	Colourless Glass	body				
510E 475N-1	1	Bottle unidentified	Solarized Glass Manganese Tint	body				
510E 475N-1	1	Beverage bottle unspecified	Amber/Brown Glass	body				
510E 475N-1	2	Wine bottle	Green Glass (dark olive)	body				
510E 475N-1	1	wire	Iron					

Provenience	Quantity	Object	Material	Portion	Decorative Pattern	Decorative Colour	Condition	Primary Diagnostic
510E 475N-1	2	Cut nail	iron				Incomplete	
510E 475N-1	4	Mammal bone	bone				Incomplete	
510E 475N-1	2	coal	coal					
510E 475N-1	1	Unidentified Object	Unidentified Material				Incomplete	
510E 510N-1	1	Tableware unspecified	Vitrified White Earthenware	base	Plain	Colourless	Incomplete	
510E 510N-1	1	Pane glass	Colourless Glass					
510E 510N-1	1	Cut nail	iron				Incomplete	
510E 510N-1	1	Mammal bone	bone				Incomplete	
510E 515N-1	3	Tableware unspecified	Vitrified White Earthenware		Unspecified Transfer	red	Incomplete	
510E 515N-1	1	Cut nail	iron				Incomplete	
510E 515N-1	1	Unidentified Object	iron				Complete	
515E 475N-1	1	Beverage bottle unspecified	Amber/Brown Glass	base			Incomplete	
515E 475N-1	1	Pane glass	Colourless Glass					
515E 475N-1	1	Cut nail	iron					
515E 475N-1	1	Mammal bone	bone				Incomplete	
515E 475N-1	1	Container unspecified	Coarse Earthenware red				Incomplete	
515E 510N-1	1	Tableware unspecified	Refined White Earthenware	body	Painted unspecified	blue	Incomplete	
515E 510N-1	1	Bottle unidentified	Solarized Glass Manganese Tint	base			Incomplete	
515E 510N-1	1	Wine bottle	Green Glass (dark olive)	body			Incomplete	
515E 510N-1	2	Cut nail	iron				Incomplete	
515E 510N-1	1	Sample	brick					
515E 515N-1	1	Tableware unspecified	Vitrified White Earthenware	base	Willow	blue	Incomplete	
515E 515N-1	1	Tableware unspecified	Vitrified White Earthenware	base	Plain	Colourless	Incomplete	
515E 515N-1	2	Pane glass	Colourless Glass					
515E 515N-1	1	Mammal bone	bone				Incomplete	
515E 515N-1	1	Sample	Brick					
517.5E 512.5N-1	1	Unidentifiable (corroded lump etc.)	iron					
520E 510N-1	1	Tableware unspecified	Soft Paste Porcelain	base	Plain	Colourless	Incomplete	
520E 510N-1	1	Container unspecified	Coarse Stoneware	base		buff	Incomplete	
520E 510N-1	1	Liquor bottle	Colourless Glass	base			Incomplete	
520E 515N-1	2	Tableware unspecified	Vitrified White Earthenware		Plain	Colourless	Incomplete	
520E 515N-1	1	container	Coarse Earthenware red	body		brown	Incomplete	
520E 515N-1	1	Bottle unidentified	Colourless Glass	body			Incomplete	
520E 515N-1	1	Slate board	slate				Incomplete	
525E 475N-1	14	Beverage bottle unspecified	Colourless Glass					
525E 475N-1	2	Mammal bone	bone				Incomplete	
525E 475N-1	1	Bird bone	bone				Incomplete	
525E 475N-1	1	Horseshoe	iron				Complete	
525E 475N-1	1	Unidentified Object	iron				Incomplete	
525E 475N-1	8	sample	Brick				Incomplete	

Provenience	Quantity	Object	Material	Portion	Decorative Pattern	Decorative Colour	Condition	Primary Diagnostic
525E 510N-1	1	Tableware unspecified	Vitrified White Earthenware	body	Unspecified Transfer	blue	Incomplete	
525E 510N-1	1	Bottle unidentified	Solarized Glass Manganese Tint	body			Incomplete	
525E 510N-1	1	Bottle unidentified	Colourless Glass	body			Incomplete	
525E 510N-1	1	Shell unspecified	shell					
525E 510N-1	2	Pane glass	Colourless Glass					
525E 515N-1	1	Tableware unspecified	Vitrified White Earthenware	body	Sponged	blue	Incomplete	
525E 515N-1	1	Cup unspecified	Soft Paste Porcelain	rim	Gilt band	Colourless	Incomplete	
525E 515N-1	1	Tableware unspecified	Vitrified White Earthenware	body	Unspecified Transfer	blue	Incomplete	
525E 515N-1	3	Tableware unspecified	Vitrified White Earthenware	body	Plain	Colourless	Incomplete	
525E 515N-1	3	Tableware unspecified	Yellowware		Plain	Yellow	Incomplete	
525E 515N-1	1	container	Coarse Earthenware red	body		Yellow	Incomplete	
525E 515N-1	1	Clay smoking pipe stem	White Clay				Incomplete	R. Bannerman Montreal
525E 515N-1	1	Pharmaceutical / toiletry bottle	Colourless Glass	finish / rim			Complete	Hand tooled bottle finish
525E 515N-1	1	Unidentified Object	White Glass opaque (milk)				Incomplete	
525E 515N-1	1	Wine bottle	Green Glass (dark olive)	body			Incomplete	
525E 515N-1	1	Bottle unidentified	Solarized Glass Manganese Tint	body			Incomplete	
525E 515N-1	1	Pane glass	Colourless Glass					
525E 515N-1	1	button	Copper Alloy		Inset decoration		Incomplete	
525E 515N-1	2	Cut nail	Iron				Incomplete	
525E 517.5N-1	1	Clay smoking pipe stem	White Clay	mouthpiece		Yellow	Incomplete	Glazed
525E 517.5N-1	1	Pane glass	Colourless Glass					
525E 517.5N-1	2	Cut nail	Iron				Incomplete	
525E 517.5N-1	1	Liquor bottle	Amber/Brown Glass	base			Complete	
525E 517.5N-1	1	Mammal bone	bone				Incomplete	
527.5E 512.5N-1	2	Tableware unspecified	Vitrified White Earthenware	rim	Plain	Colourless	Incomplete	
527.5E 512.5N-1	1	Holloware unspecified	Vitrified White Earthenware	body	Plain	Colourless	Incomplete	
527.5E 512.5N-1	3	Tableware unspecified	Refined White Earthenware	body	Plain	Colourless	Incomplete	
527.5E 512.5N-1	1	Tableware unspecified	Vitrified White Earthenware	body	Unspecified Transfer	blue	Incomplete	
527.5E 512.5N-1	1	Wine bottle	Green Glass (dark olive)	body			Incomplete	
527.5E 512.5N-1	1	Bottle unidentified	Green Glass	body			Incomplete	
527.5E 512.5N-1	1	Unidentified Object	Copper Alloy				Incomplete	
527.5E 512.5N-1	5	Cut nail	Iron				Incomplete	
527.5E 512.5N-1	1	Mammal bone	bone				Incomplete	
530E 510N-1	1	Holloware unspecified	Soft Paste Porcelain	body	Plain	Colourless	Incomplete	
530E 510N-1	3	Tableware unspecified	Vitrified White Earthenware	body	Plain	Colourless	Incomplete	
530E 510N-1	2	Pharmaceutical / toiletry bottle	Solarized Glass Manganese Tint	finish / rim			Complete	Hand tooled bottle finish
530E 510N-1	2	Case bottle	Green Glass (dark olive)	body			Incomplete	
530E 510N-1	1	Pane glass	Colourless Glass					

Provenience	Quantity	Object	Material	Portion	Decorative Pattern	Decorative Colour	Condition	Primary Diagnostic
530E 510N-1	2	Cut nail	Iron				Incomplete	
530E 515N-1	5	Holloware unspecified	Vitrified White Earthenware		Unspecified Transfer	blue	Incomplete	
530E 515N-1	1	Tableware unspecified	Vitrified White Earthenware	base	Plain	Colourless	Incomplete	
530E 515N-1	1	Tableware unspecified	Refined White Earthenware	body	Painted unspecified	blue	Incomplete	
530E 515N-1	2	Holloware unspecified	Yellowware	body	Plain	Yellow	Incomplete	
530E 515N-1	2	Wine bottle	Green Glass (dark olive)	body			Incomplete	
530E 515N-1	1	Bottle unidentified	Solarized Glass Manganese Tint	body			Incomplete	
530E 515N-1	5	Bottle unidentified	Colourless Glass	body			Incomplete	
530E 515N-1	1	Pane glass	Colourless Glass					
530E 515N-1	1	Unidentifiable (corroded lump etc.)	Colourless Glass				Burned / Melted	
530E 515N-1	3	Cut nail	iron				Incomplete	
535E 510N-1	12	Holloware unspecified	Vitrified White Earthenware		Sponged	blue	Incomplete	
535E 510N-1	1	Cup unspecified	Hard Paste European/English Porcelain	rim	Gilt band	Colourless	Incomplete	
535E 510N-1	1	Tableware unspecified	Vitrified White Earthenware	rim	Unspecified Transfer	blue	Incomplete	
535E 510N-1	1	Tableware unspecified	Vitrified White Earthenware	body	Unspecified Transfer	blue	Incomplete	
535E 510N-1	1	Bead	Porcelain unspecified			blue	Complete	
535E 510N-1	1	Lantern chimney	Colourless Glass	top			Incomplete	
535E 510N-1	1	Lantern chimney	Colourless Glass	body			Incomplete	
535E 510N-1	1	Case bottle	Green Glass (dark olive)	body			Incomplete	
535E 510N-1	4	Wine bottle	Green Glass (dark olive)	body			Incomplete	
535E 510N-1	1	Bottle unidentified	Colourless Glass	shoulder			Incomplete	
535E 510N-1	8	Bottle unidentified	Colourless Glass	body			Incomplete	
535E 510N-1	3	Bottle unidentified	Solarized Glass Manganese Tint	body			Incomplete	
535E 510N-1	6	Pane glass	Colourless Glass					
535E 515N-1	20	Tableware unspecified	Vitrified White Earthenware		Plain	Colourless	Incomplete	
535E 515N-1	7	Holloware unspecified	Vitrified White Earthenware	rim	Unspecified Transfer	blue	Incomplete	
535E 515N-1	4	Tableware unspecified	Vitrified White Earthenware		Unspecified Transfer	blue		
535E 515N-1	1	Tableware unspecified	Colourless Glass	body	Sunburst		Incomplete	Press moulded (lime glass)
535E 515N-1	4	Bottle unidentified	Colourless Glass	body			Incomplete	
535E 515N-1	2	Lantern chimney	Colourless Glass	body			Incomplete	
535E 515N-1	8	Pane glass	Colourless Glass					
535E 515N-1	2	Cut nail	iron				Incomplete	
<b>TOTAL</b>	<b>3174</b>							



**15.0 Appendix B: Photographic Catalogue**

Image Number	Provenience	Subject	Direction	Photographer
D053*	430E 465N-2	Plan of feature (post hole?) in subsoil. *Image numbering continues from Stage 2 report (photos 1-52).	E	NK
D054	430R 465N-2	Plan of possible feature (post hole?) in subsoil.	E	NK
D055	430E 465N-2	Plan of possible feature (post hole?) in subsoil.	E	NK
D056	440E 455N-2	Plan of possible feature in subsoil.	N	NK
D057	447.5E 462.5N-2	Plan of possible feature in subsoil.	N	NK
D058	447.5E 462.5N-2	Plan of possible feature in subsoil.	N	NK
D059	465E 460N-2	Plan of possible feature in subsoil.	N	NK
D060	465E 460N-2	Plan of possible feature in subsoil.	N	NK
D061	470E 465N	N profile.	N	NK
D062	517.5E 512.5N	N profile.	N	NK
D063	517.5N 512.5E	N. profile.	N	NK
D064		Fieldwork in progress, to the N. of the farmhouse. Formerly subop 1A13.	E	NK
D065		Fieldwork in progress behind the barn. Formerly subop 1B.	S	NK
D066		Fieldwork in progress behind the barn. Formerly subop 1B.	S	NK
D067		Fieldwork in progress to the N. of the farmhouse. Formerly subop 1A13.	SE	NK
D068		Fieldwork in progress to the SW of the farmhouse. Formerly subop 1A3.	W	NK
D069		Fieldwork in progress to the S. of the farmhouse. Formerly subop 1A2.	W	NK
D070		Fieldwork in progress to the S. of the farmhouse. Formerly subop 1A2.	W	NK
D071		Fieldwork in progress, to the S. of the farmhouse. Formerly subop 1A2.	W	NK
D072		Fieldwork in progress, to the S. of the farmhouse. Formerly subops 1A1-1A2.	NW	NK
D073	435E 480N	Sample of VWE sherds.		NK
D074	535E 510N, 525E 515N, 432.5E 477.5N	Hard paste porcelain, with gilt band decoration.		NK
D075	432.5E 477.5N	Cut nails.		NK
D076	430E 475N (left), 432.5E 477.5N (right)	Bottle finishes.		NK
D077	432.5E 477.5N	Mammal bones.		NK
D078	425E 480N.	Horseshoe.		NK
D079	432.5E 477.5N	Complete pharmaceutical/ toiletry bottle.		NK

Image Number	Provenience	Subject	Direction	Photographer
D080	525E 515N (top), 435E 480N (bottom).	White clay smoking pipe stems. BANNERMAN MONTREAL (top), W.D. BELL QUEBEC (bottom).		NK
D081	420E 460N	Porcelain doll leg.		NK
D082	460E 455N	Copper alloy object - possible jewelry.		NK
D083	430E 485N (left), 460N 475N (right)	1959 penny (L), 1929 nickel (R).		NK
D084	430E 485N	Sample of modern material: wire nails, bottle glass, plastic, shingle fragment.		NK

**16.0 Appendix C: Map Catalogue**

Map Number	Description	Created By
1	Site Location	B. Mortimer
8	Stage 3 Area Excavation Plan	B. Mortimer
9	Photo Locations	B. Mortimer

**17.0 Appendix D: Document Catalogue**

Project	Description	Created By
PA1009	3288 Greenbank Rd. Field Notes Stage 3 (scanned to PDF "PA1009 – 3288 Greenbank Rd. - Field Notes.pdf")	N. Kopp