

**LEGEND:**

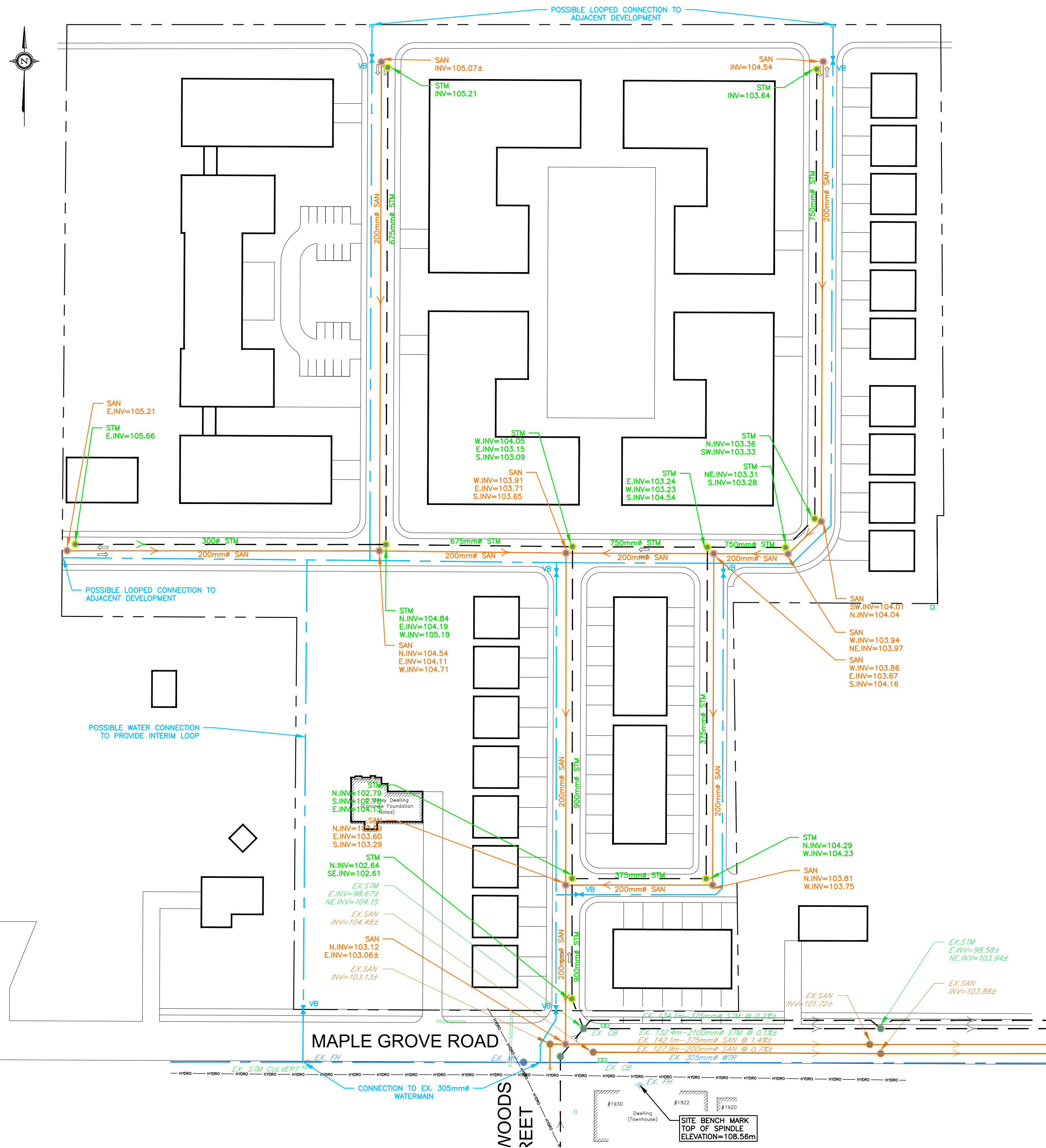
- $\times 100.00$  EXISTING SPOT ELEVATION
- $\times 100.00$  PROPOSED SPOT ELEVATION
- $\frac{1.0\%}{\rightarrow}$  EXISTING GRADE AND DIRECTION
- $\frac{1.0\%}{\rightarrow}$  PROPOSED GRADE AND DIRECTION
- $\frac{100.00}{100.00}$  PROPOSED/EXISTING SPOT ELEVATION
- $\rightarrow$  MAJOR SYSTEM FLOW ROUTE
- EXISTING STORM SEWER
- FUTURE STORM SEWER
- DRAINAGE DIVIDE
- EX6  
4.010  
0.19 STORM DRAINAGE AREA

**DSEL**  
 david schaeffer engineering ltd  
 SMART SUBDIVISIONS™

120 Iber Road Unit 103  
 Stittsville, Ontario, K2S 1E9  
 Tel. (613) 836-0856  
 Fax. (613) 836-7183  
 www.DSEL.ca

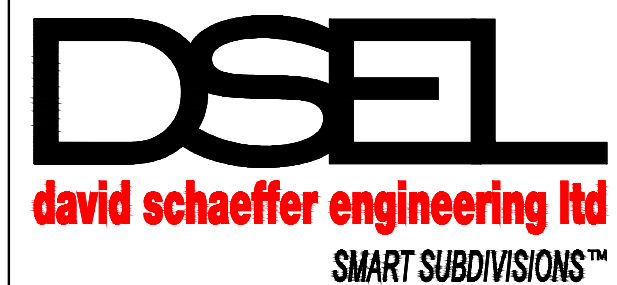
**CONCEPTUAL GRADING & DRAINAGE PLAN**  
**1919 MAPLE GROVE ROAD**

PROJ NO.:	16-861
DRAWN BY:	AJG
DATE:	2019-08-14
SCALE:	1:750
FIGURE NO.:	GDP-1



**LEGEND:**

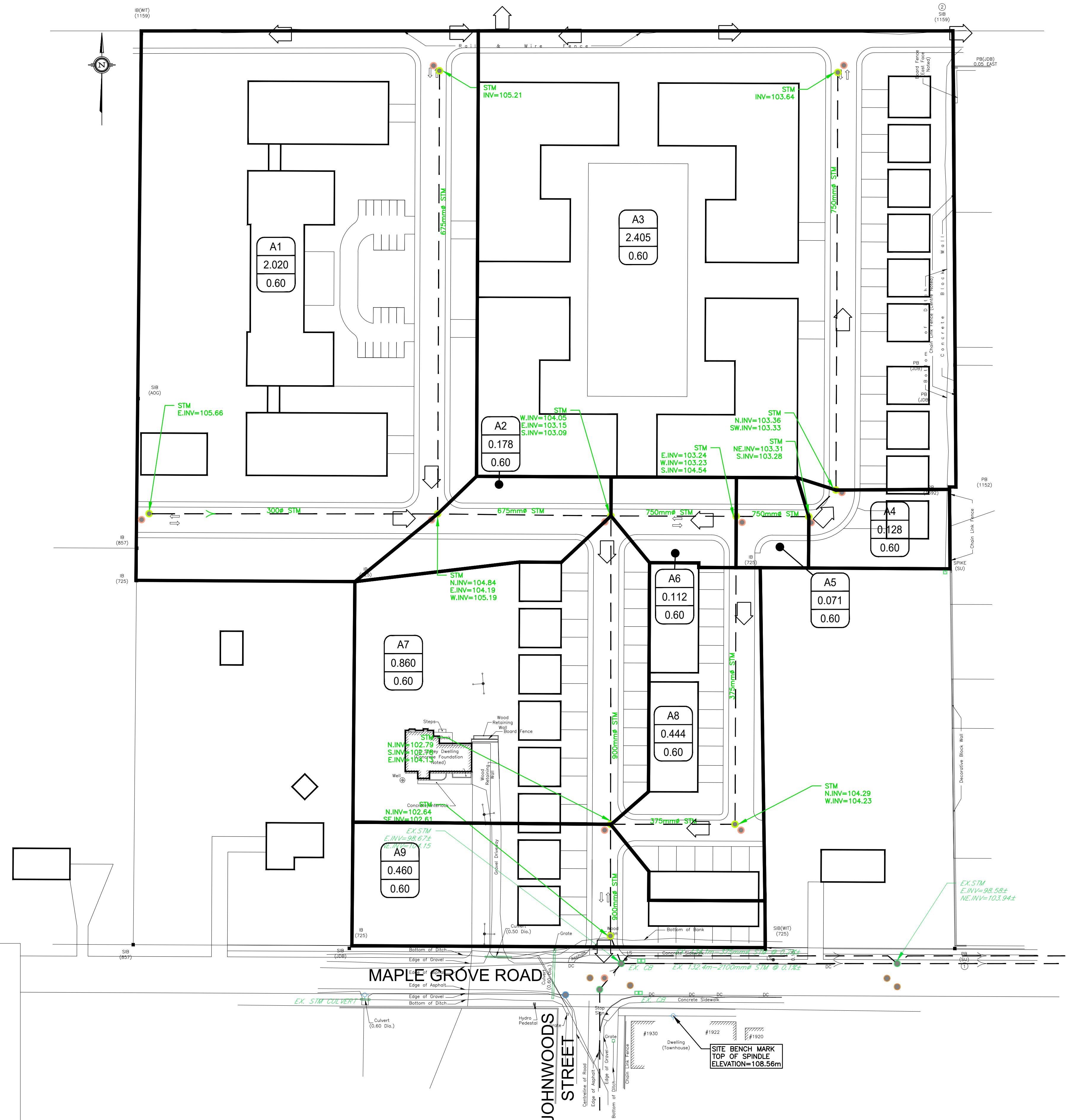
- EXISTING WATERMAIN
- EXISTING SANITARY SEWER
- EXISTING STORM SEWER
- FUTURE WATERMAIN
- FUTURE SANITARY SEWER
- FUTURE STORM SEWER



120 Iber Road Unit 103  
 Stittsville, Ontario, K2S 1E9  
 Tel. (613) 836-0856  
 Fax. (613) 836-7183  
 www.DSEL.ca

**CONCEPTUAL SITE SERVICING PLAN  
 1919 MAPLE GROVE ROAD**

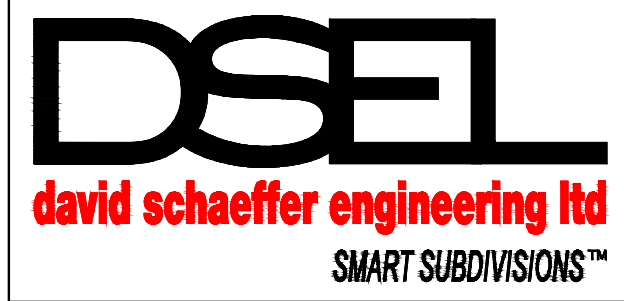
PROJ NO.:	16-861
DRAWN BY:	AJG
DATE:	2019-08-14
SCALE:	1:750
FIGURE NO.:	SSP-1



**LEGEND:**

- EXISTING STORM SEWER
- ..... FUTURE STORM SEWER
- |       |
|-------|
| EX6   |
| 4.010 |
| 0.19  |

 STORM DRAINAGE AREA



120 Iber Road Unit 103  
 Stittsville, Ontario, K2S 1E9  
 Tel. (613) 836-0856  
 Fax. (613) 836-7183  
 www.DSEL.ca

**CONCEPTUAL STORMWATER DRAINAGE PLAN  
 1919 MAPLE GROVE ROAD**

PROJ NO.:	16-861
DRAWN BY:	AJG
DATE:	2019-08-14
SCALE:	1:750
FIGURE NO.:	SWM-1

z:\projects\16-861\_formasiam-1919\_maple\_grove\b\_design\b2\_drawings\b2-2\_main (dsel)\oes\_sub1\cod\2019-08-14\_861\_ajg.dwg