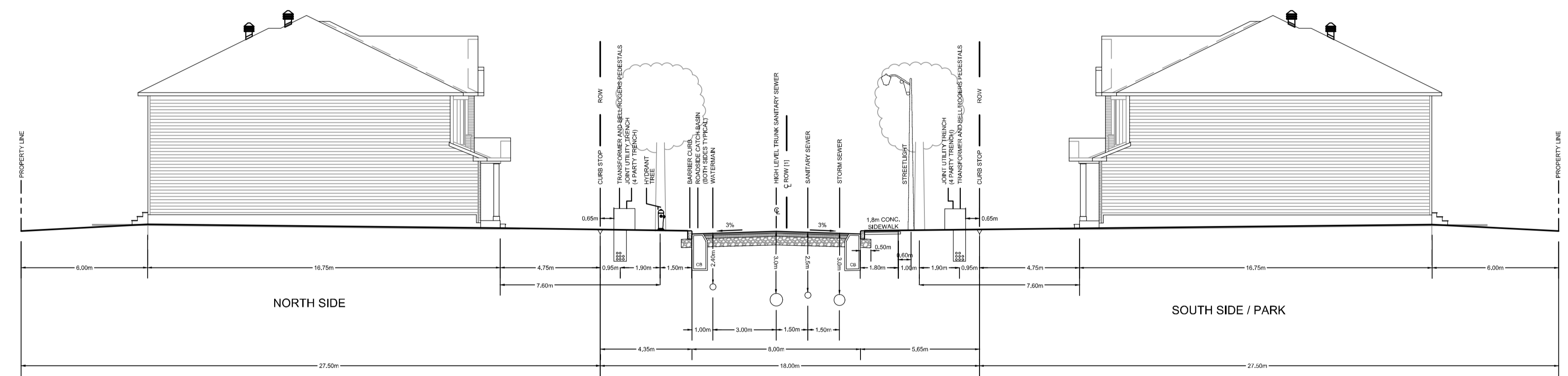


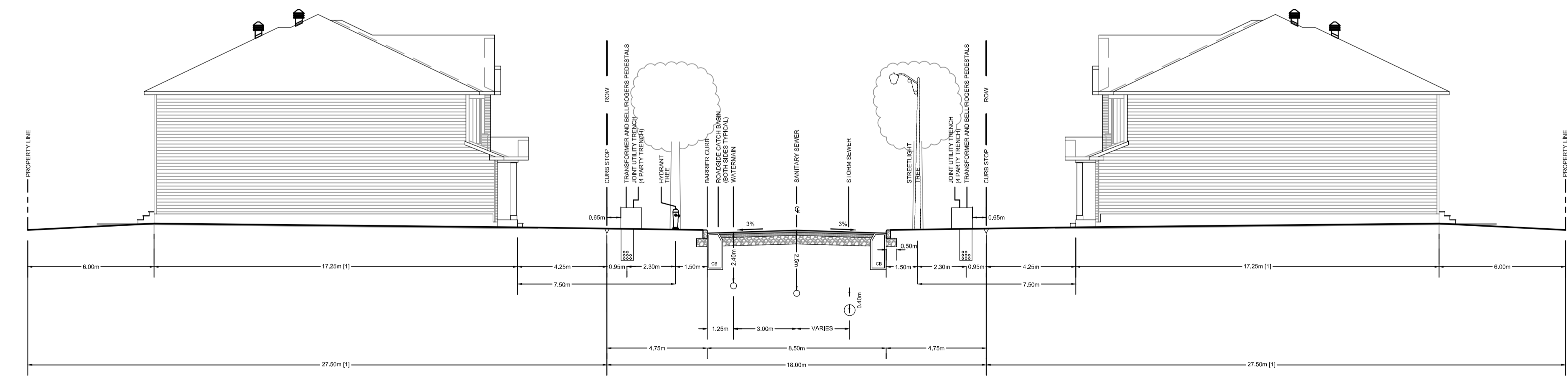
24.0m R.O.W. CROSS SECTION (TYP)
RUE DE JARGEAU ROAD

- NOTE:**
- [1] ROAD CROWN IS OFFSET 1.5m FROM ROW CENTRELINE.
 - [2] TRANSFORMER AND JOINT UTILITY TRENCH WILL ONLY BE LOCATED ALONG SOUTH SIDE OF ROW.
 - [3] CURB TRANSITIONS TO BE COMPLETED PER SC1.2 AND SC8.1 BASED ON DISTANCES AND CURB HEIGHTS PROVIDED IN SC8.1.
 - [4] CURBS SHALL CONFORM TO SC9.1 FROM STATION 1+006 TO 1+150.
 - [5] HOL CONCRETE DUCT BANK FOR FUTURE TRUNK FROM STATION 1+175 TO 1+195. PROVIDE 0.3m MIN FROM 3-PARTY JUT.



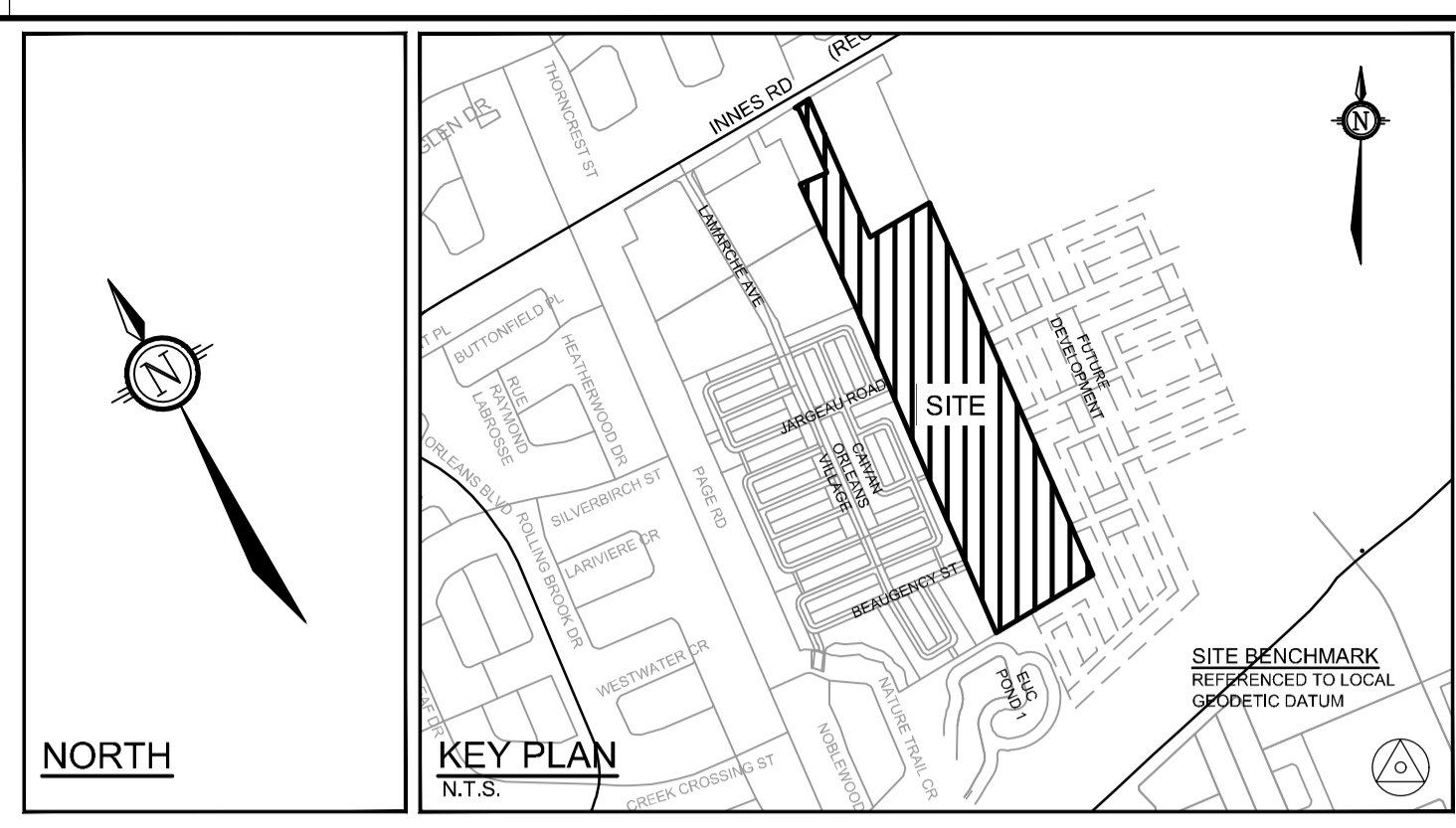
18.0m R.O.W. CROSS SECTION (TYP)
RUE DE BEAUGENCY STREET

- NOTE:**
- [1] ROAD CROWN IS OFFSET 0.5m FROM ROW CENTRELINE.



18.0m R.O.W. CROSS SECTION (TYP)

- NOTE:**
- [1] FOR LOTS WITH REDUCED LOT DEPTHS OF 27.0m (LOCATED ALONG LUDIS WAY), ALLOWABLE BUILDING DEPTHS ARE LIMITED TO 16.75m MAX.
 - [2] LUDIS WAY AND VOIE DE CERULEAN WAY TO HAVE MOUNTABLE CURB UNLESS OTHERWISE NOTED.



NOTE:
THE POSITION OF ALL POLE LINES, CONDUITS, WATERMANS, SEWERS AND OTHER UNDERGROUND AND OVERGROUND UTILITIES AND STRUCTURES IS NOT NECESSARILY SHOWN ON THE CONTRACT DRAWINGS, AND WHERE SHOWN, THE ACCURACY OF THE POSITION OF SUCH UTILITIES AND STRUCTURES IS NOT GUARANTEED. BEFORE STARTING WORK, DETERMINE THE EXACT LOCATION OF ALL SUCH UTILITIES AND STRUCTURES AND ASSUME ALL LIABILITY FOR DAMAGE TO THEM.

No.	REVISION	DATE	BY	No.	REVISION	DATE	BY
14.	REVISED AND ISSUED FOR REVIEW AND TENDER	JAN 17/24	BHB	8.	ISSUED FOR EGA AND TENDER	MAR 18/22	BHB
13.	ISSUED FOR REVIEW PHASE 2 & 3	APRIL 3/23	BHB	7.	REVISED AND REISSUED FOR REVIEW	MAR 10/22	BHB
12.	ISSUED FOR CONSTRUCTION	JUNE 27/22	BHB	6.	REVISED AND REISSUED FOR REVIEW	NOV 25/21	BHB
11.	REVISED PER HYDRO COMMENTS	JUNE 22/22	BHB	5.	ISSUED FOR REVIEW	JUNE 18/21	BHB
10.	ISSUED FOR UTILITY CONFIRMATION	MAY 18/22	BHB	4.	REVISED AND REISSUED FOR DRAFT PLAN APPROVAL	NOV 27/20	BHB
9.	ISSUED FOR FINAL CITY APPROVAL AND ECA	MAY 11/22	BHB	3.	REVISED AND REISSUED FOR DRAFT PLAN APPROVAL	JULY 29/20	BHB
				2.	REVISED AND REISSUED FOR DRAFT PLAN APPROVAL	APR 3/20	BHB
				1.	DRAFT PLAN	OCT 4/19	BHB

SCALE		DESIGN	
NTS	CHECKED	BR	
	DRAWN	BCS	
	CHECKED	BR	
	APPROVED	BCS	
		BHB	

Engineers, Planners & Landscape Architects
Suite 200, 240 Michael Cowpland Drive
Ottawa, Ontario, Canada K2M 1P6

Telephone (613) 254-9643
Facsimile (613) 254-5867
Website www.novatech-eng.com

LOCATION
CITY OF OTTAWA
THE COMMONS

DRAWING NAME
CROSS SECTIONS - ROW

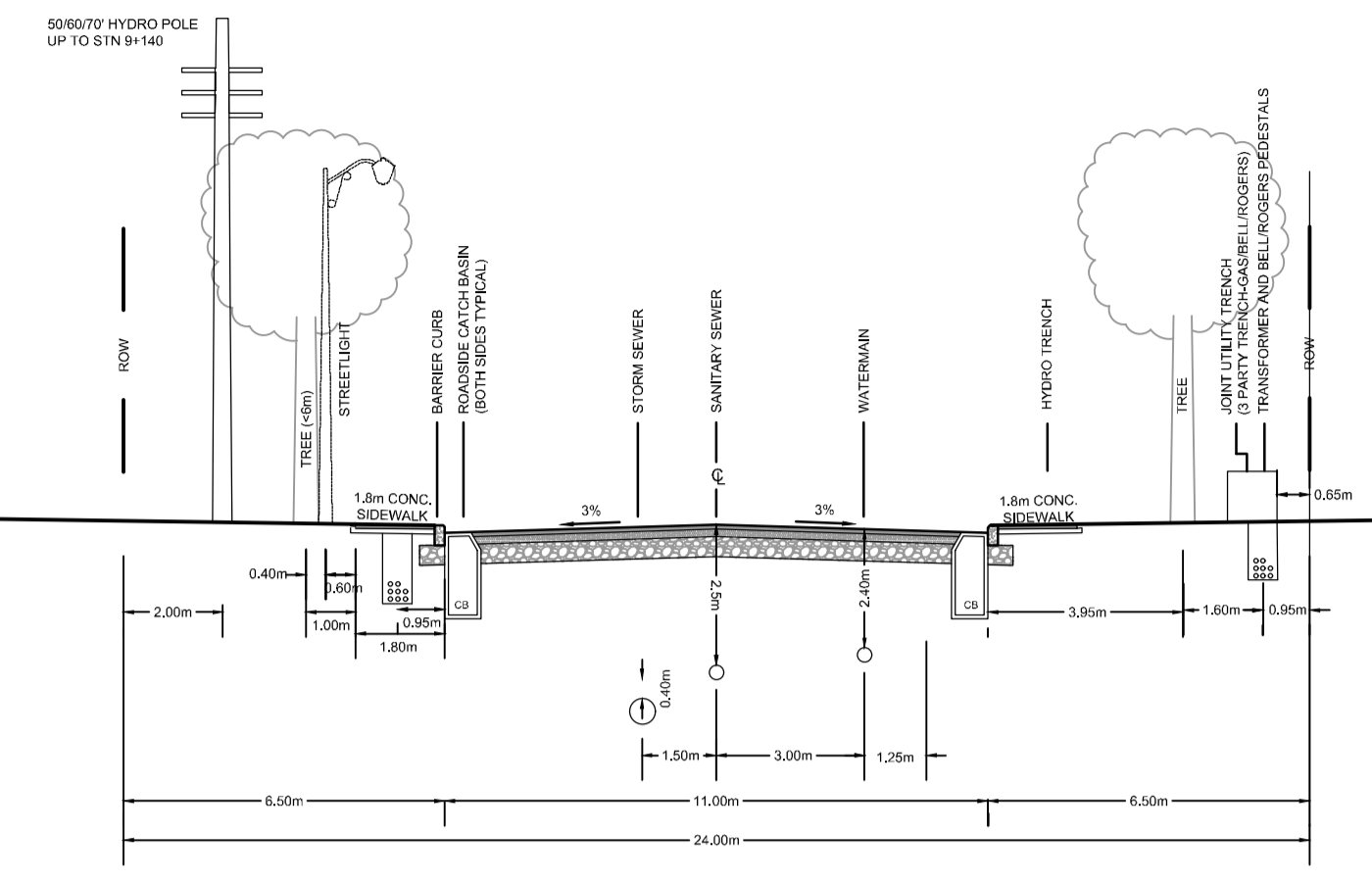
PROJECT No.
118224-00

REV
REV # 14

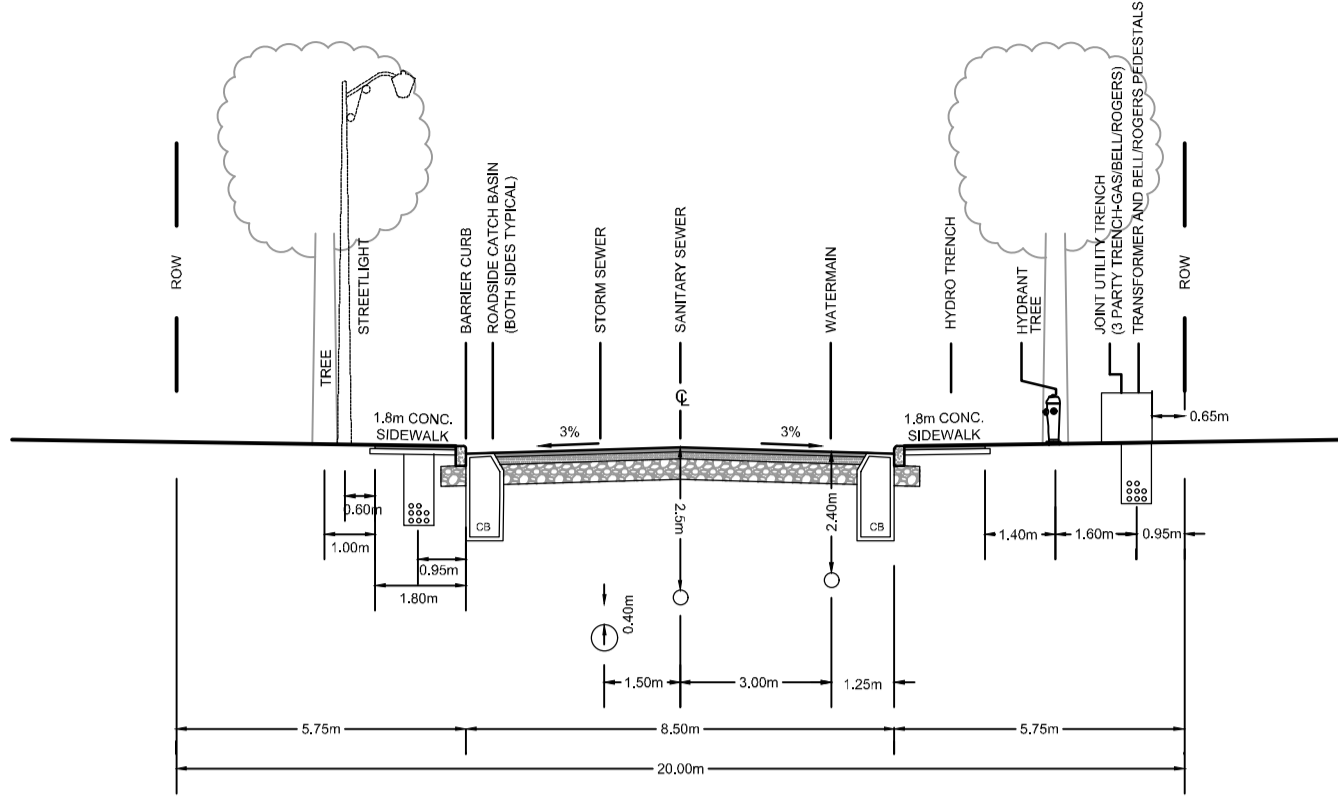
DRAWING No.
118224-XS1

M:\2018\118224\CADD\Design\118224-XS.dwg, 118224-XS1, Apr 02, 2023, 1:53pm, mgahauri

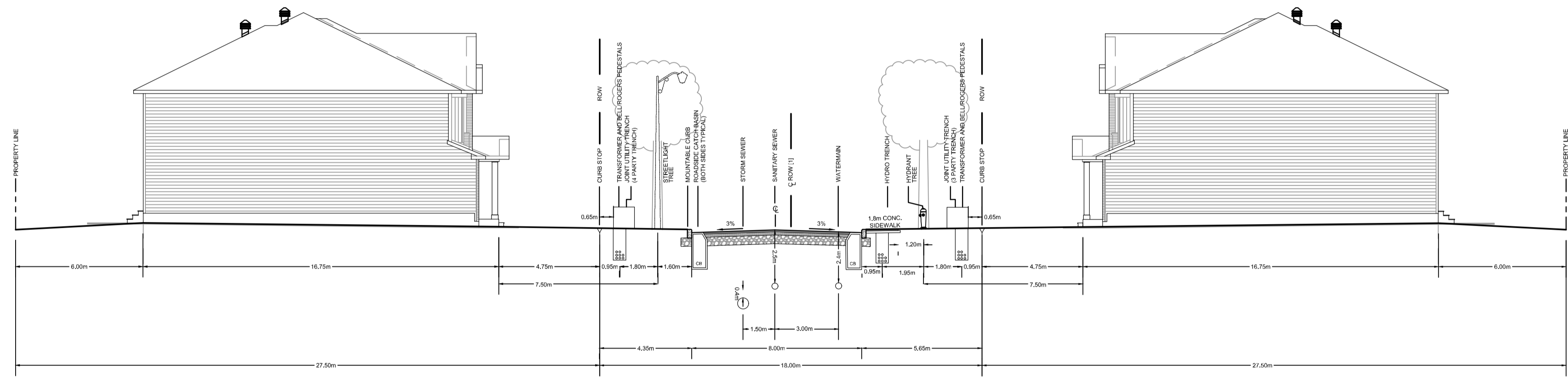
D07-16-19-0027 #18535



24.0m R.O.W. CROSS SECTION (TYP)
VENTUS WAY - 9+000 TO 9+150

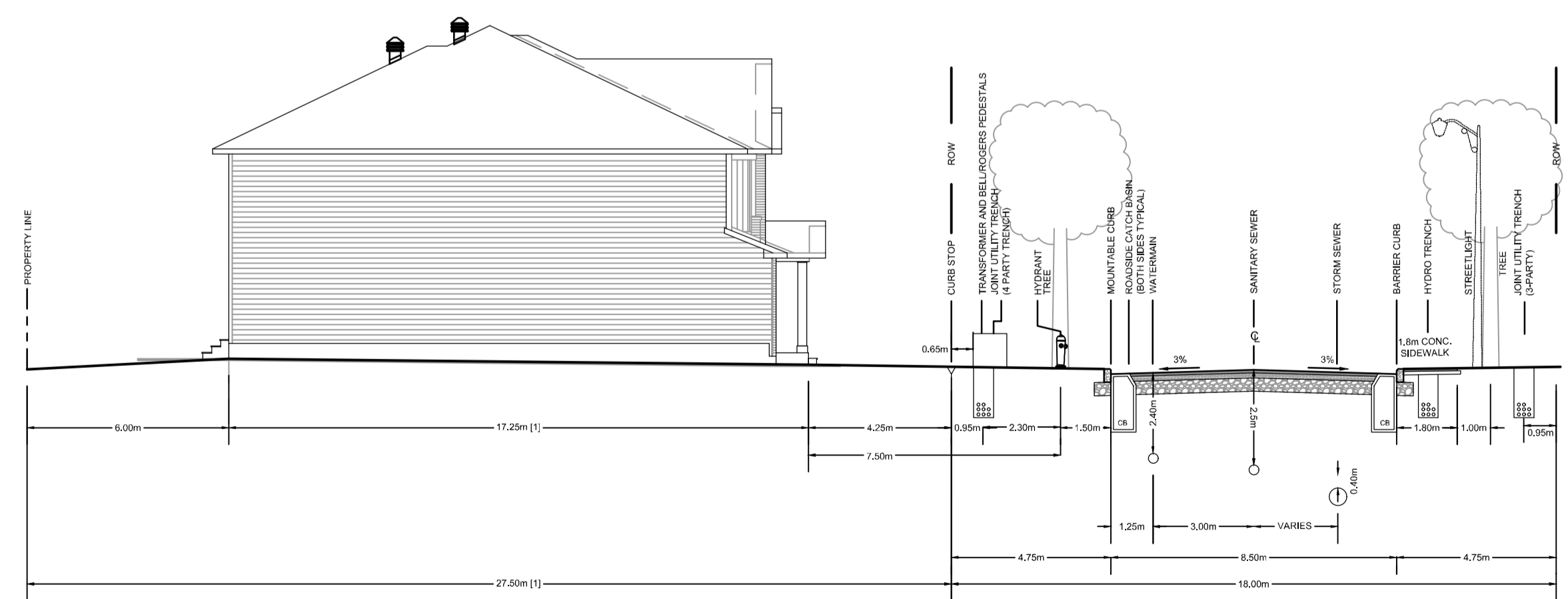


20.0m R.O.W. CROSS SECTION (TYP)
VENTUS WAY - 9+150 TO 9+350



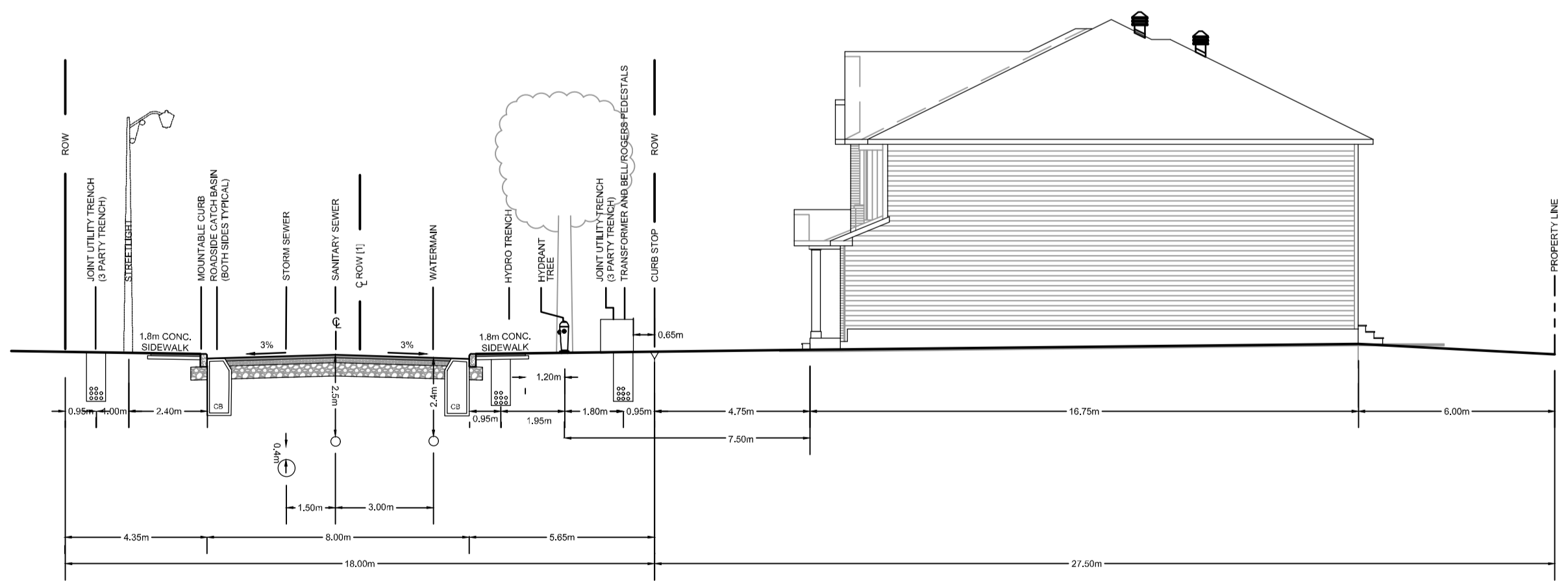
18.0m R.O.W. CROSS SECTION (TYP)
VENTUS WAY - 9+390 TO 9+600

NOTE:
[1] ROAD CROWN IS OFFSET 0.65m FROM ROW CENTRELINE.



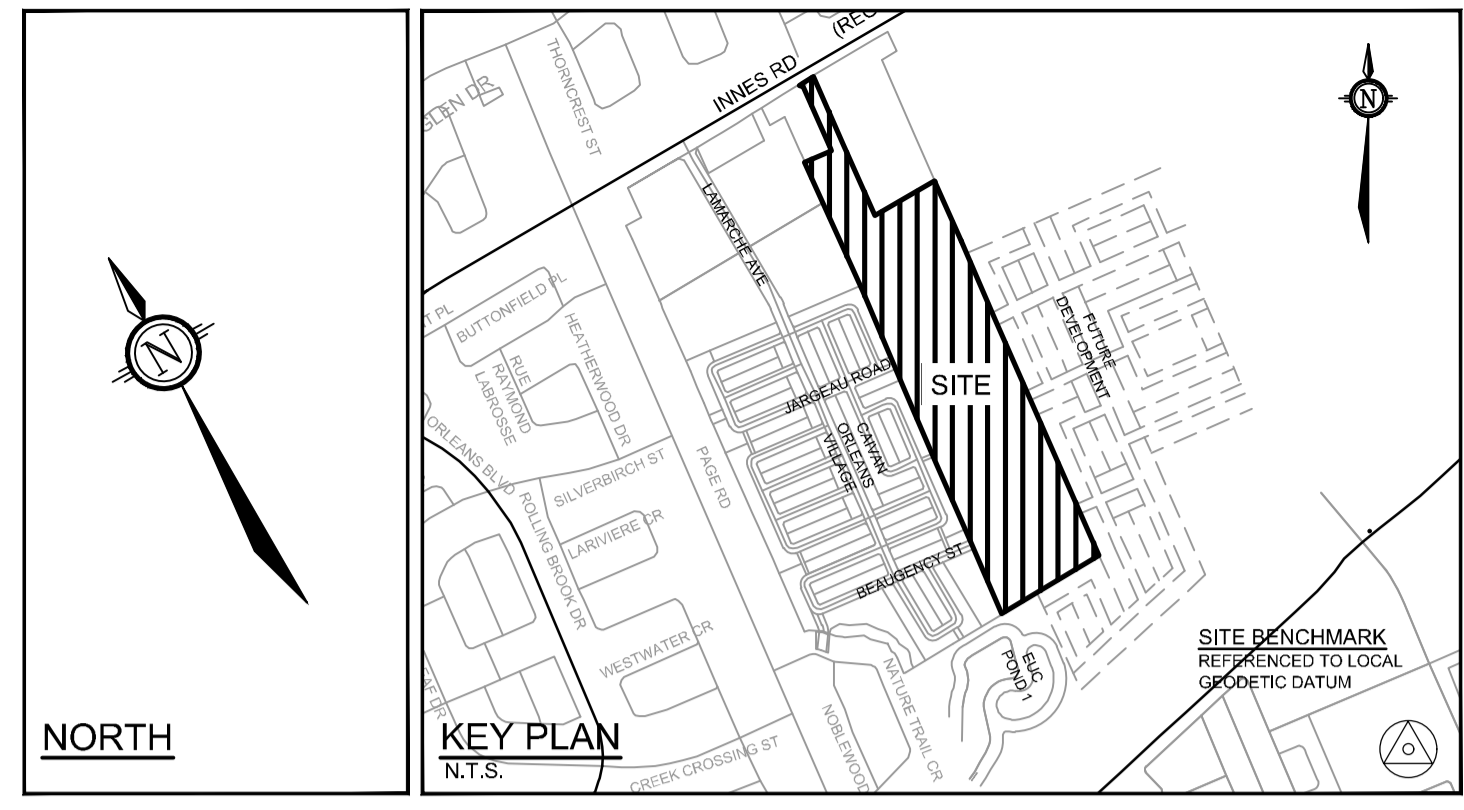
18.0m R.O.W. CROSS SECTION (TYP)
LUDIS WAY - 2+200 TO 2+263

NOTE:
[1] FOR LOTS WITH REDUCED LOT DEPTHS OF 27.0m (LOCATED ALONG LUDIS WAY), ALLOWABLE BUILDING DEPTHS ARE LIMITED TO 16.75m MAX.



18.0m R.O.W. CROSS SECTION (TYP)
VENTUS WAY - 9+365 TO 9+390

NOTE:
[1] ROAD CROWN IS OFFSET 0.65m FROM ROW CENTRELINE.



NOTE:
THE POSITION OF ALL POLE LINES, CONDUITS, WATERMANS, SEWERS AND OTHER UNDERGROUND AND OVERGROUND UTILITIES AND STRUCTURES IS NOT NECESSARILY SHOWN ON THE CONTRACT DRAWINGS, AND WHERE SHOWN, THE ACCURACY OF THE POSITION OF SUCH UTILITIES AND STRUCTURES IS NOT GUARANTEED. BEFORE STARTING WORK, DETERMINE THE EXACT LOCATION OF ALL SUCH UTILITIES AND STRUCTURES AND ASSUME ALL LIABILITY FOR DAMAGE TO THEM.

No.	REVISION	DATE	BY

No.	REVISION	DATE	BY
8.	ISSUED FOR CONSTRUCTION	JUNE 27/22	BHB
7.	ISSUED FOR UTILITY CONFIRMATION	MAY 18/22	BHB
6.	ISSUED FOR FINAL CITY APPROVAL AND ECA	MAY 11/22	BHB
5.	ISSUED FOR ECA AND TENDER	MAR 18/22	BHB
4.	REVISED AND REISSUED FOR REVIEW	MAR 10/22	BHB
3.	REVISED AND REISSUED FOR REVIEW	NOV 25/21	BHB
2.	ISSUED FOR REVIEW	JUNE 18/21	BHB
1.	REVISED AND REISSUED FOR DRAFT PLAN APPROVAL	NOV 27/20	BHB

SCALE	DESIGN
NTS	BR
	CHECKED
	BCS
	DRAWN
	BR
	CHECKED
BCS	
APPROVED	BHB

Engineers, Planners & Landscape Architects
Suite 200, 240 Michael Cowpland Drive
Ottawa, Ontario, Canada K2M 1P6

Telephone (613) 254-9643
Facsimile (613) 254-5867
Website www.novatech-eng.com

LOCATION
CITY OF OTTAWA
THE COMMONS

DRAWING NAME
CROSS SECTIONS - ROW

PROJECT No. 118224-00
REV # 13
DRAWING No. 118224-XS2

M:\2018\118224\CADD\design\118224-XS.dwg, 118224-XS2, May 01, 2024 - 4:52pm, broudb

D07-16-19-0027 #18535