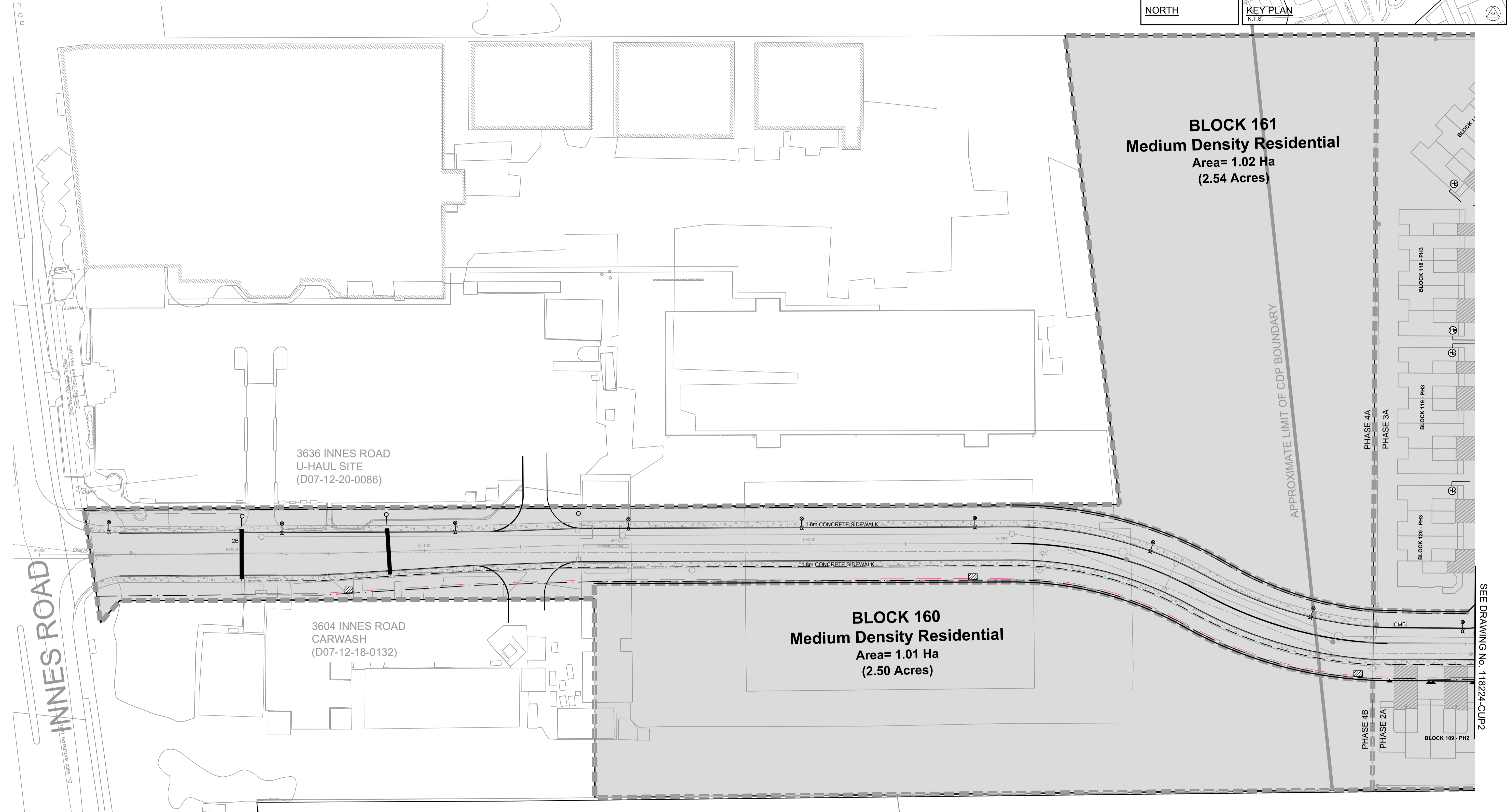
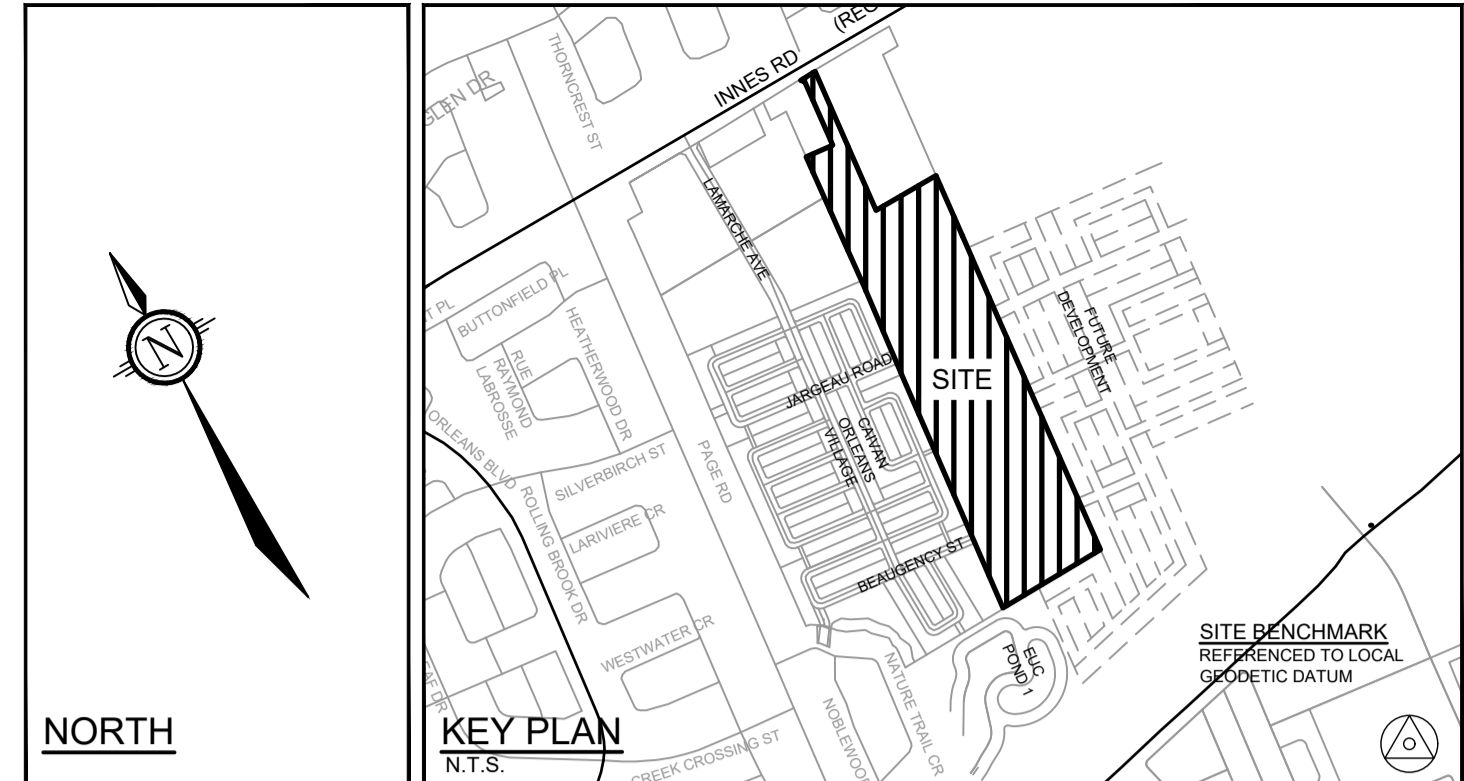


LEGEND:

- | | | | | | | | |
|---|------------------------------------|-----|--------------------------|----------------|------------------------------|---|-------------------------------------|
| — | PROPERTY LINE | ○ | UTILITY POLE | ⊕ | HYDRO METER BOX LOCATION | ○ | PROPOSED DECIDUOUS TREE |
| — | JOINT UTILITY TRENCH | ⊗ | ROGERS PEDESTAL | ⊕ _H | HYDRO GANG METER LOCATION | ⊗ | PROPOSED SIDEWALK REINSTATEMENT |
| — | COMMUNICATIONS TRENCH | ⊗ | ROGERS GRADE LEVEL BOX | ⊕ _G | GAS METER BOX LOCATION | ▨ | DRAINAGE EASEMENT |
| — | HYDRO SECONDARY | ⊗ | BELL PEDESTAL | ⊕ _C | PROPOSED HYDRANT LOCATION | ▨ | UTILITY EASEMENT |
| — | GAS MAIN | ⊗ | BELL CENTRAL SPLIT POINT | □ | PROPOSED ROAD CATCHBASIN | ○ | EXISTING TREE TO REMAIN IF POSSIBLE |
| — | STREETLIGHT CABLE AND DUCT | ⊗ | BELL GRADE LEVEL BOX | □ | PROPOSED REARYARD CATCHBASIN | ○ | PROPOSED OVERLAY |
| — | 1 PHASE PADMOUNT HYDRO TRANSFORMER | — | PROPOSED ROAD CROSSING | ○ | PROPOSED SANITARY MANHOLE | △ | SERVICE LOCATION |
| — | HYDRO PRIMARY PEDESTAL | — | PROPOSED ROAD CROSSING | ○ | PROPOSED STORM MANHOLE | | |
| — | 6x12 PRECAST MANHOLE | 2SL | 2 STREET LIGHT | ○ | CONCRETE ENCASED | | |
| — | STREETLIGHT | 7H | 7 HYDRO | ○ | DIRECT BURIED | | |
| — | STREETLIGHT DISCONNECT | 1C | 1 ROGERS | | | | |
| — | PROPOSED STREETLIGHT GROUNDING ROD | 1B | 1 BELL | | | | |
| | | 1G | 1 GAS | | | | |
| | | DC | DEPRESSED CURB | | | | |
| | | Ⓞ | COMMUNITY MAILBOX | | | | |

COMPOSITE UTILITY PLAN TO BE READ IN CONJUNCTION WITH:
 -HYDRO OTTAWA PLANS, REF NO. XXX
 -BELL PLANS, REF NO. XXX
 -ROGERS PLANS, REF NO. XXX
 -ENBRIDGE PLANS, REF NO. XXX
 -STREETLIGHTING PLAN, 118224-SL
 -LANDSCAPE PLANS.

ALL FOOTPRINTS SHOWN ARE CONCEPTUAL. REFER TO INDIVIDUAL SITING PLANS FOR FINAL MODEL FOOTPRINT

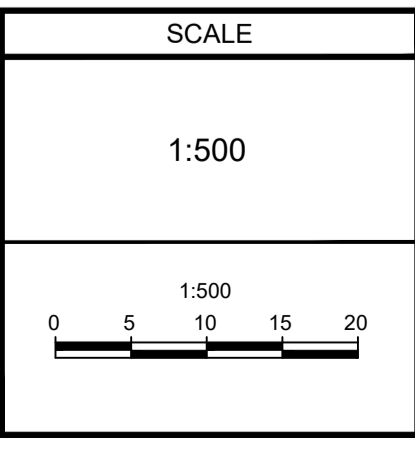


NOTE:
 THE POSITION OF ALL POLE LINES, CONDUITS, WATERMANS, SEWERS AND OTHER UNDERGROUND AND OVERGROUND UTILITIES AND STRUCTURES IS NOT NECESSARILY SHOWN ON THE CONTRACT DRAWINGS, AND WHERE SHOWN, THE ACCURACY OF THE POSITION OF SUCH UTILITIES AND STRUCTURES IS NOT GUARANTEED. BEFORE STARTING WORK, DETERMINE THE EXACT LOCATION OF ALL SUCH UTILITIES AND STRUCTURES AND ASSUME ALL LIABILITY FOR DAMAGE TO THEM.

REFER TO 118224-XS1 AND 118224-XS2 FOR TYPICAL ROAD CROSS SECTIONS
 REFER TO 118224-ND FOR ADDITIONAL NOTES & DETAILS

PRELIMINARY

| No. | REVISION | DATE | BY |
|-----|-------------------|------------|-----|
| 1. | ISSUED FOR REVIEW | JUNE 18/21 | BHB |



| | |
|----------|-----|
| DESIGN | BR |
| CHECKED | BCS |
| DRAWN | BR |
| CHECKED | BCS |
| APPROVED | BHB |

FOR REVIEW ONLY

NOVATECH
 Engineers, Planners & Landscape Architects
 Suite 200, 240 Michael Cowpland Drive
 Ottawa, Ontario, Canada K2M 1P6

Telephone (613) 254-9643
 Facsimile (613) 254-5867
 Website www.novatech-eng.com

| | |
|---|----------------------------|
| LOCATION CITY OF OTTAWA THE COMMONS | PROJECT No. 118224-00 |
| DRAWING NAME COMPOSITE UTILITY PLAN | REV REV # 1 |
| | DRAWING No. 118224-CUP3 |

C:\temp\AsPublish_120818\118224-CUP3.dwg, 118224-CUP3, Jun 21, 2021, 1:38pm, bared