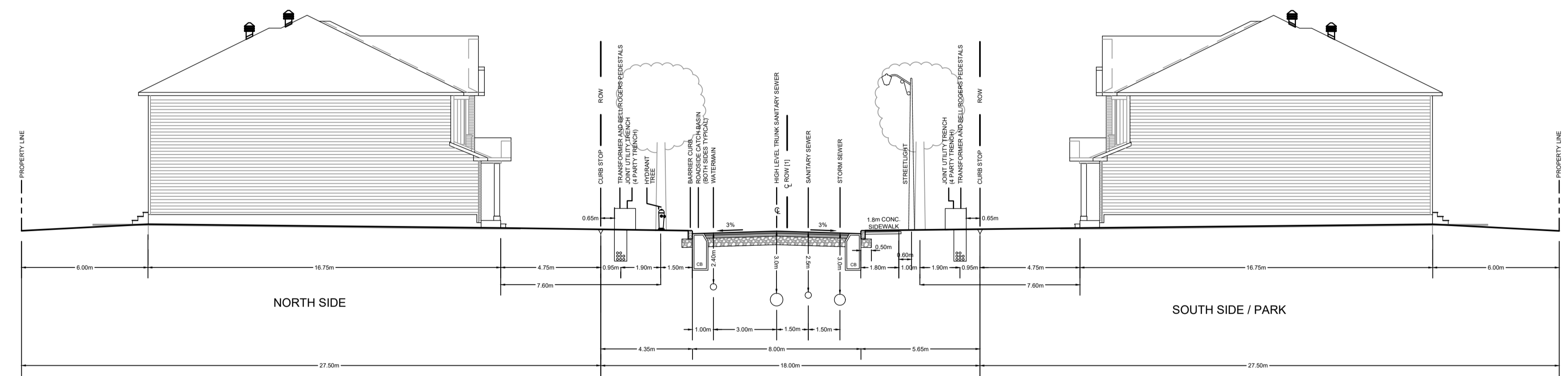


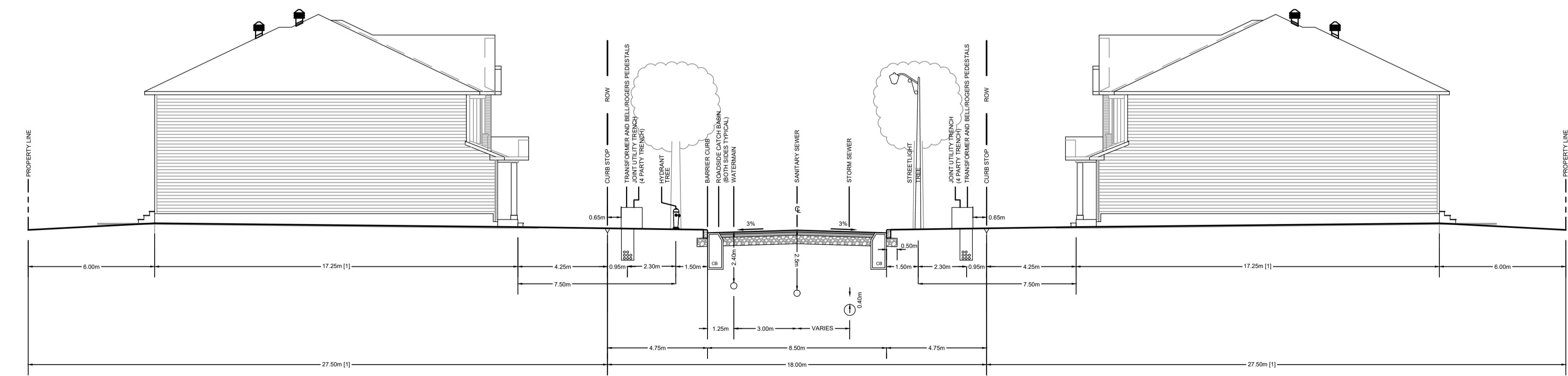
24.0m R.O.W. CROSS SECTION (TYP)  
RUE DE JARGEAU ROAD

- NOTE:
- ROAD CROWN IS OFFSET 1.5m FROM ROW CENTRELINE.
  - TRANSFORMER AND JOINT UTILITY TRENCH WILL ONLY BE LOCATED ALONG SOUTH SIDE OF ROW.
  - CURB TRANSITIONS TO BE COMPLETED PER SC1.2 AND SC8.1 BASED ON DISTANCES AND CURB HEIGHTS PROVIDED IN SC8.1.
  - CURBS SHALL CONFORM TO SC9.1 FROM STATION 1+006 TO 1+150.



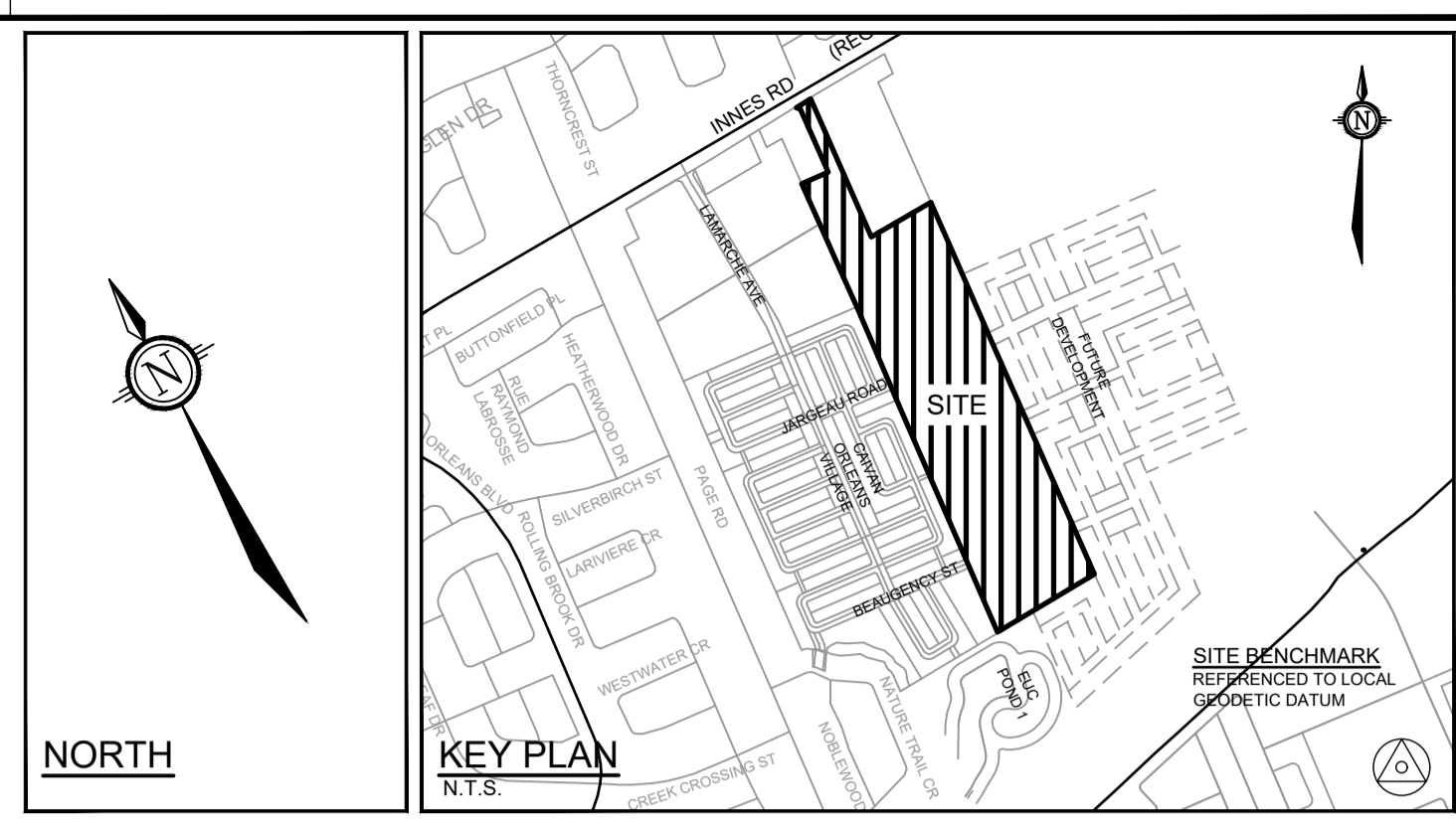
18.0m R.O.W. CROSS SECTION (TYP)  
RUE DE BEAUGENCY STREET

- NOTE:
- ROAD CROWN IS OFFSET 0.5m FROM ROW CENTRELINE.



18.0m R.O.W. CROSS SECTION (TYP)  
STREETS 2 - 6 AND 8

- NOTE:
- FOR LOTS WITH REDUCED LOT DEPTHS OF 27.0m (LOCATED ALONG STREET 2), ALLOWABLE BUILDING DEPTHS ARE LIMITED TO 16.75m MAX.
  - STREET 2 AND VOIE DE CERULEAN WAY TO HAVE MOUNTABLE CURB UNLESS OTHERWISE NOTED.



NOTE:  
THE POSITION OF ALL POLE LINES, CONDUITS, WATERMANS, SEWERS AND OTHER UNDERGROUND AND OVERGROUND UTILITIES AND STRUCTURES IS NOT NECESSARILY SHOWN ON THE CONTRACT DRAWINGS, AND WHERE SHOWN, THE ACCURACY OF THE POSITION OF SUCH UTILITIES AND STRUCTURES IS NOT GUARANTEED. BEFORE STARTING WORK, DETERMINE THE EXACT LOCATION OF ALL SUCH UTILITIES AND STRUCTURES AND ASSUME ALL LIABILITY FOR DAMAGE TO THEM.

**PRELIMINARY**

No.	REVISION	DATE	BY
6.	REVISED AND REISSUED FOR REVIEW	NOV 26/21	BHB
5.	ISSUED FOR REVIEW	JUNE 18/21	BHB
4.	REVISED AND REISSUED FOR DRAFT PLAN APPROVAL	NOV 27/20	BHB
3.	REVISED AND REISSUED FOR DRAFT PLAN APPROVAL	JULY 29/20	BHB
2.	REVISED AND REISSUED FOR DRAFT PLAN APPROVAL	APR 3/20	BHB
1.	DRAFT PLAN	OCT 4/19	BHB

SCALE	DESIGN
NTS	BR
	BCS
	BR
	BCS
	BR
	BCS
APPROVED	
BHB	

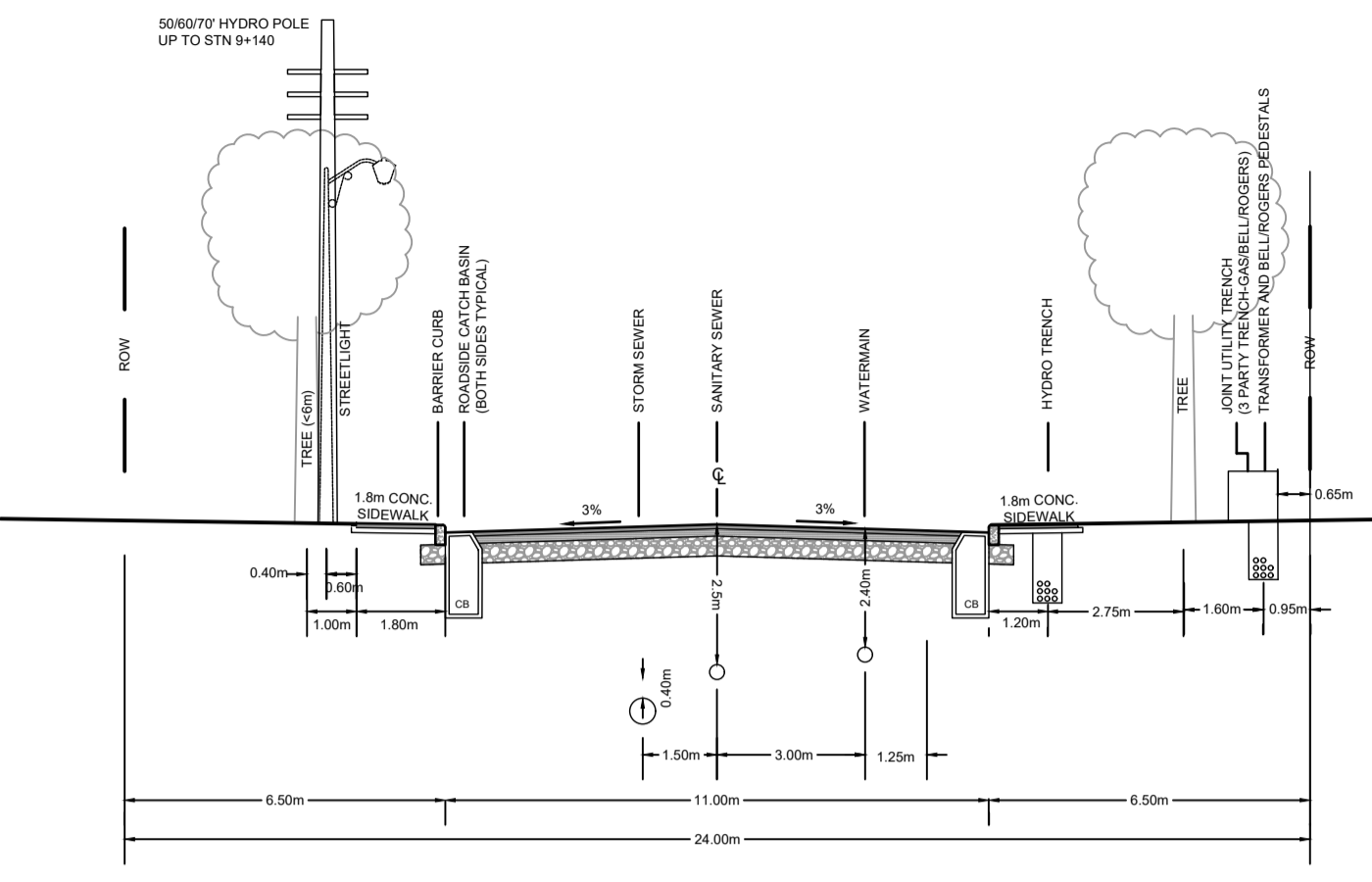
**FOR REVIEW ONLY**

**NOVATECH**  
Engineers, Planners & Landscape Architects  
Suite 200, 240 Michael Cowpland Drive  
Ottawa, Ontario, Canada K2M 1P6  
Telephone: (613) 254-9643  
Facsimile: (613) 254-5867  
Website: www.novatech-eng.com

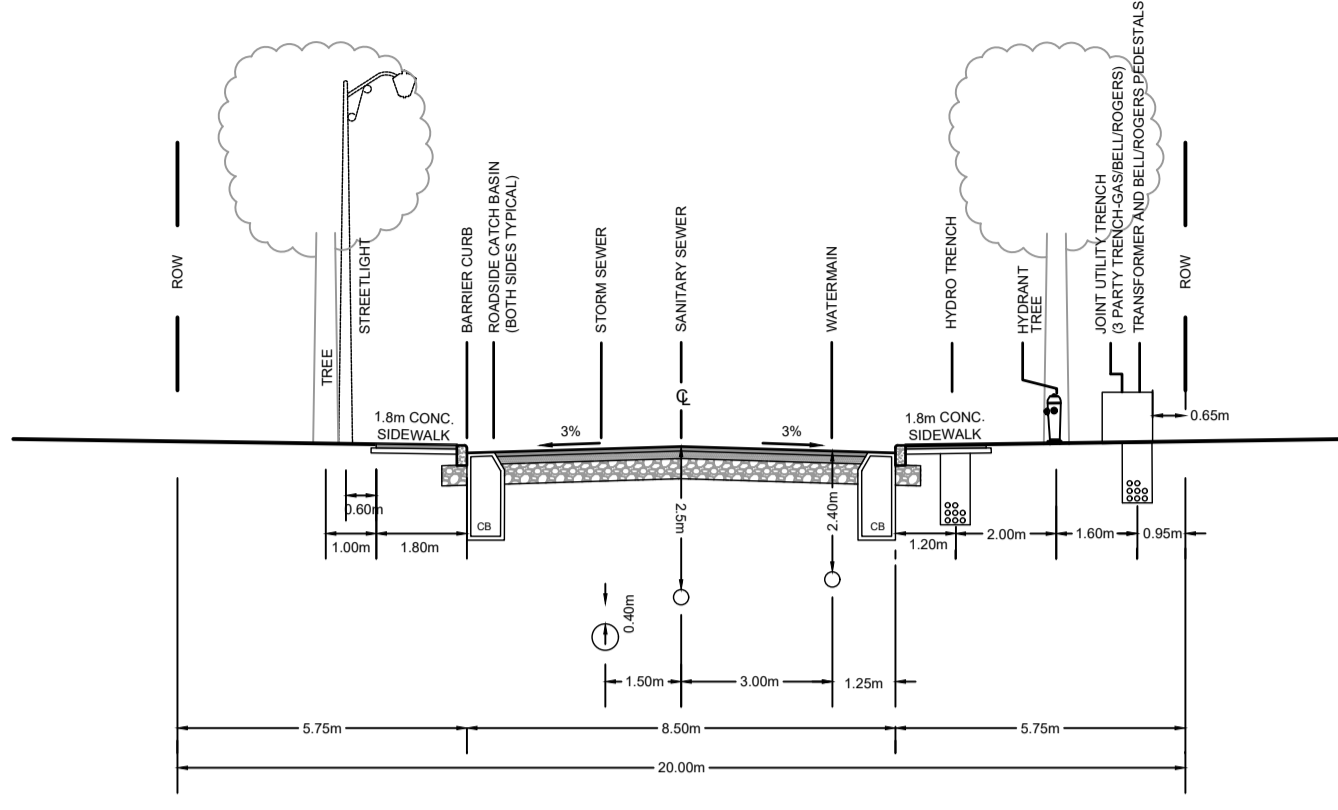
LOCATION CITY OF OTTAWA THE COMMONS	
DRAWING NAME CROSS SECTIONS - ROW	
PROJECT No. 118224-00	REV # REV # 6
DRAWING No. 118224-XS1	

C:\temp\p\publish\_2024\118224-XS1.dwg, 118224-XS1, Nov 26, 2021, 4:23pm, brend

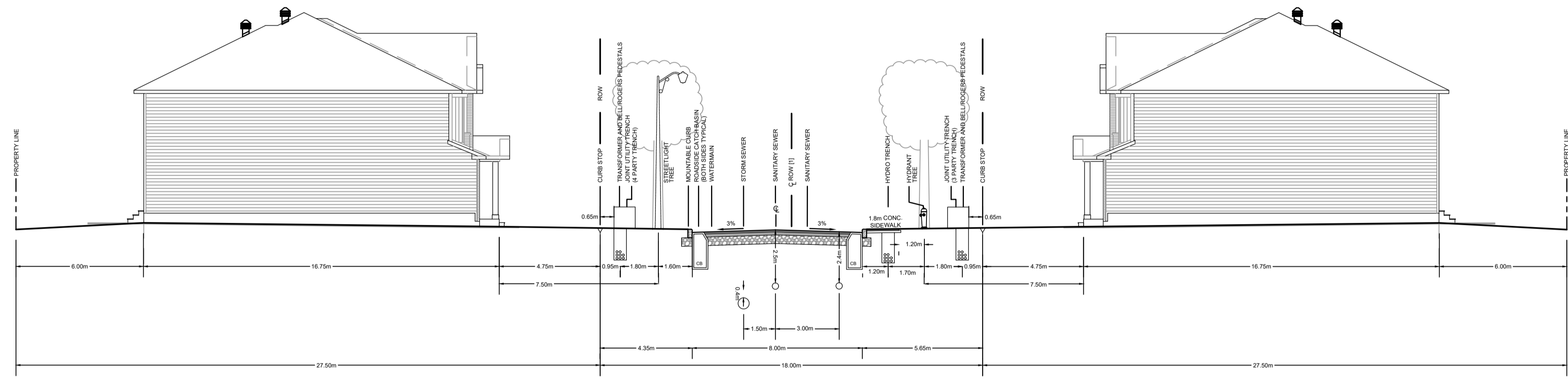
#18535  
D07-16-19-0027



24.0m R.O.W. CROSS SECTION (TYP)  
STREET 9 - 9+000 TO 9+150

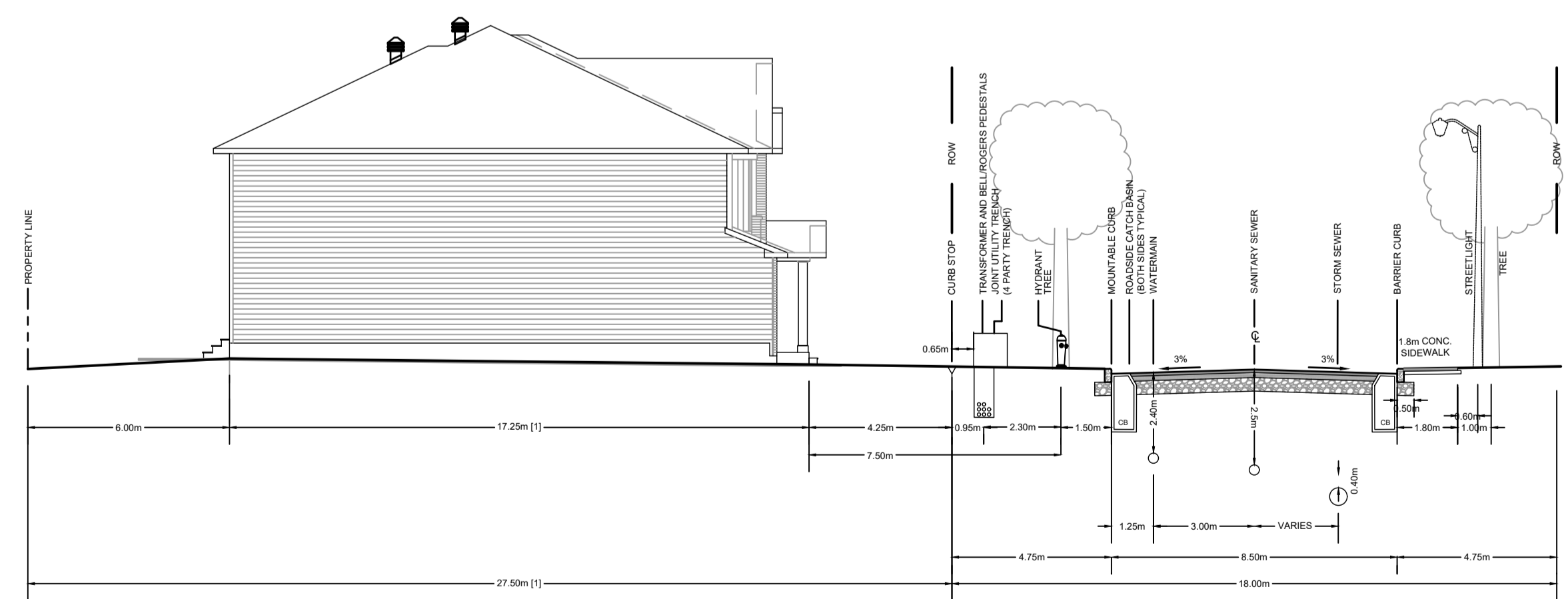


20.0m R.O.W. CROSS SECTION (TYP)  
STREET 9 - 9+150 TO 9+350



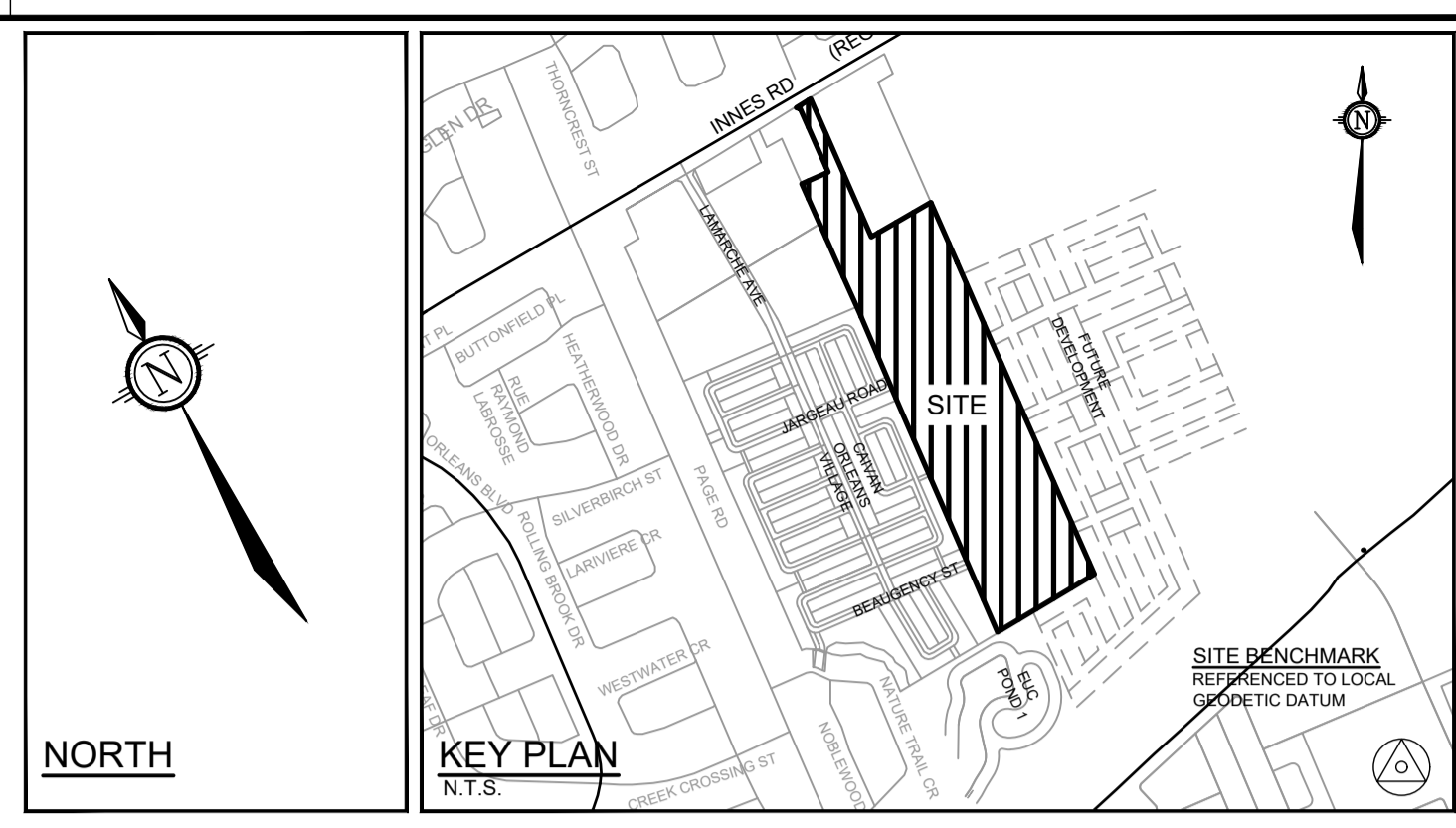
NOTE:  
[1] ROAD CROWN IS OFFSET 0.65m FROM ROW CENTRELINE.

18.0m R.O.W. CROSS SECTION (TYP)  
STREET 9 - 9+350 TO 9+600



NOTE:  
[1] FOR LOTS WITH REDUCED LOT DEPTHS OF 27.0m (LOCATED ALONG STREET 2), ALLOWABLE BUILDING DEPTHS ARE LIMITED TO 16.75m MAX.

18.0m R.O.W. CROSS SECTION (TYP)  
STREETS 2 - 2+200 TO 2+263



NOTE:  
THE POSITION OF ALL POLE LINES, CONDUITS, WATERMANS, SEWERS AND OTHER UNDERGROUND AND OVERGROUND UTILITIES AND STRUCTURES IS NOT NECESSARILY SHOWN ON THE CONTRACT DRAWINGS, AND WHERE SHOWN, THE ACCURACY OF THE POSITION OF SUCH UTILITIES AND STRUCTURES IS NOT GUARANTEED. BEFORE STARTING WORK, DETERMINE THE EXACT LOCATION OF ALL SUCH UTILITIES AND STRUCTURES AND ASSUME ALL LIABILITY FOR DAMAGE TO THEM.

**PRELIMINARY**

No.	REVISION	DATE	BY
3.	REVISED AND REISSUED FOR REVIEW	NOV 26/21	BHB
2.	ISSUED FOR REVIEW	JUNE 18/21	BHB
1.	REVISED AND REISSUED FOR DRAFT PLAN APPROVAL	NOV 27/20	BHB

SCALE	DESIGN
NTS	BR
	BCS
	BR
	BCS
	APPROVED
	BHB

**FOR REVIEW ONLY**

LICENCED PROFESSIONAL ENGINEER  
B. H. BAHIA  
100164647  
NOV 26, 2021  
PROVINCE OF ONTARIO

**NOVATECH**  
Engineers, Planners & Landscape Architects  
Suite 200, 240 Michael Cowpland Drive  
Ottawa, Ontario, Canada K2M 1P6  
Telephone (613) 254-9643  
Facsimile (613) 254-5867  
Website www.novatech-eng.com

LOCATION CITY OF OTTAWA THE COMMONS		PROJECT No. 118224-00
DRAWING NAME CROSS SECTIONS - ROW		REV # 3
		DRAWING No. 118224-XS2

C:\temp\p\publish\_2024\118224-XS2.dwg, 118224-XS2, Nov 26, 2021, 4:23pm, bresed

D07-16-19-0027 #18535