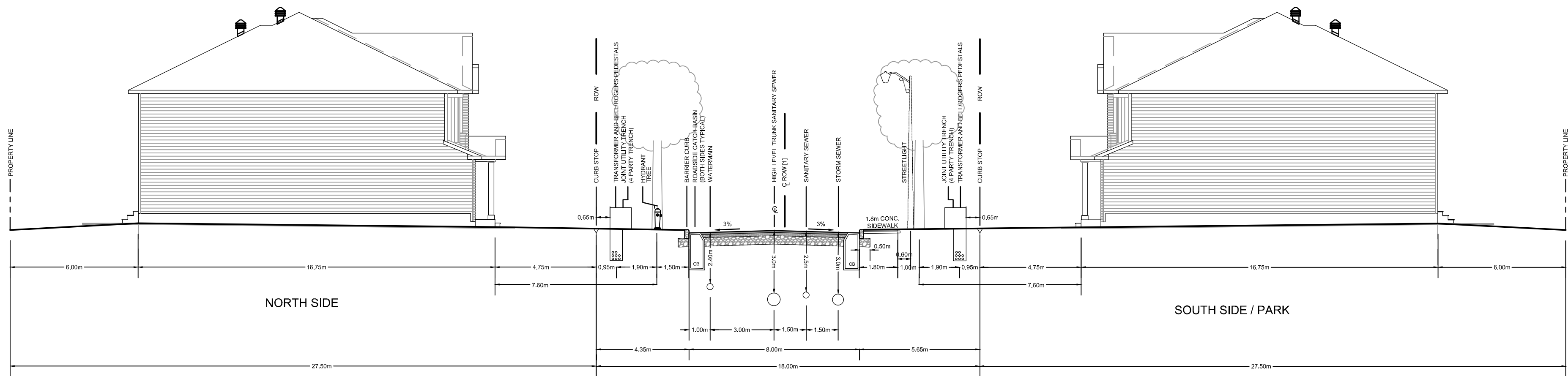


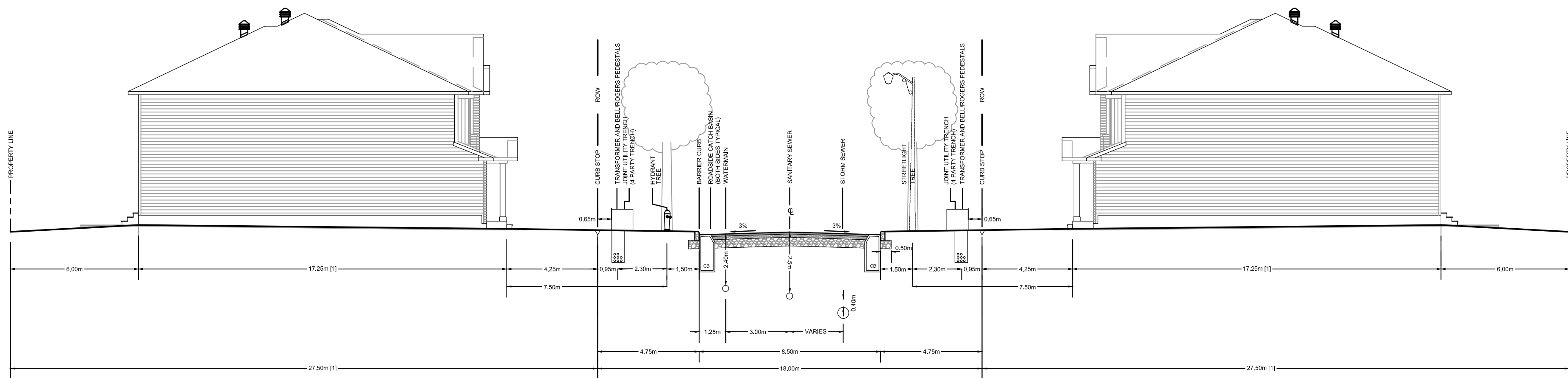
NOTE:
[1] ROAD CROWN IS OFFSET 1.5m FROM ROW CENTRELINE.
[2] TRANSFORMER AND JOINT UTILITY TRENCH WILL ONLY BE LOCATED ALONG SOUTH SIDE OF ROW.

24.0m R.O.W. CROSS SECTION (TYP)
RUE DE JARGEAU ROAD



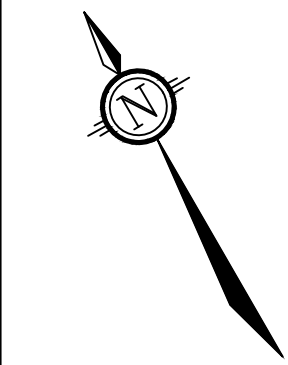
NOTE:
[1] ROAD CROWN IS OFFSET 0.5m FROM ROW CENTRELINE.

18.0m R.O.W. CROSS SECTION (TYP)
RUE DE BEAUGENCY STREET

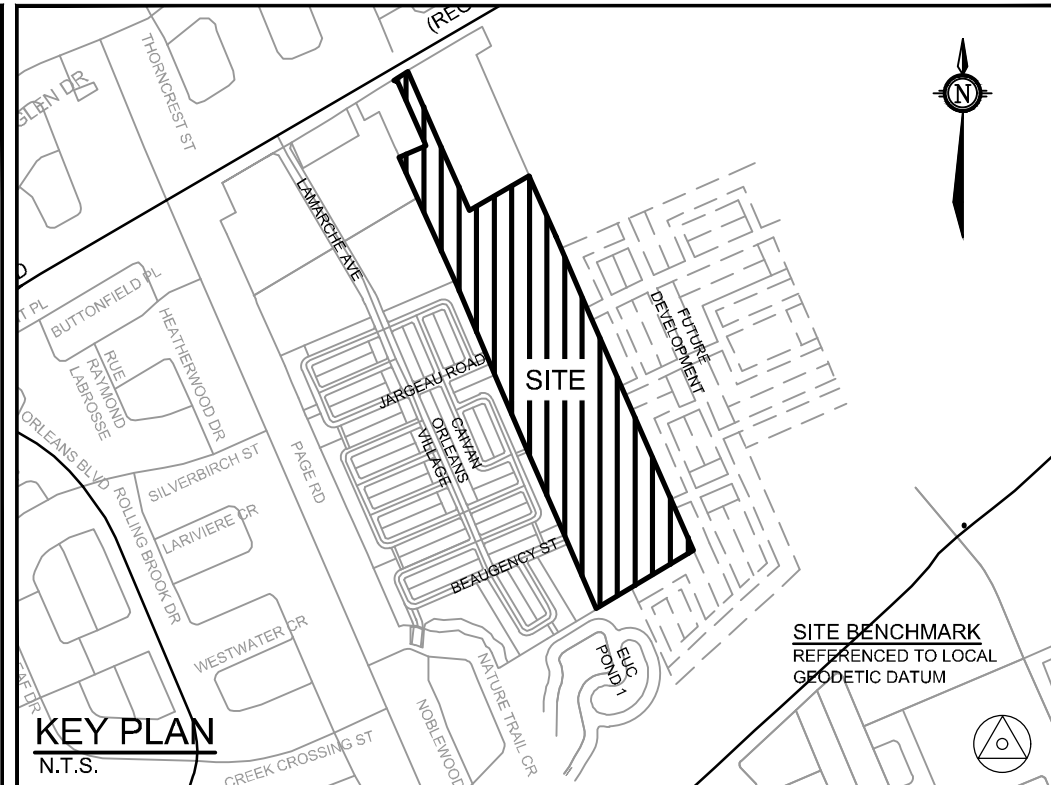


NOTE:
[1] FOR LOTS WITH REDUCED LOT DEPTHS OF 27.0m (LOCATED ALONG STREET 2), ALLOWABLE BUILDING DEPTHS ARE LIMITED TO 16.75m MAX.

18.0m R.O.W. CROSS SECTION (TYP)
STREETS 2 - 6 AND 8



NORTH



KEY PLAN
N.T.S.

SITE BENCHMARK
REFERENCED TO LOCAL
GEODETIC DATUM

NOTE:
THE POSITION OF ALL POLE LINES, CONDUITS, WATERMANS, SEWERS AND OTHER UNDERGROUND AND OVERGROUND UTILITIES AND STRUCTURES IS NOT NECESSARILY SHOWN ON THE CONTRACT DRAWINGS, AND WHERE SHOWN, THE ACCURACY OF THE POSITION OF SUCH UTILITIES AND STRUCTURES IS NOT GUARANTEED, BEFORE STARTING WORK, DETERMINE THE EXACT LOCATION OF ALL SUCH UTILITIES AND STRUCTURES AND ASSUME ALL LIABILITY FOR DAMAGE TO THEM.

PRELIMINARY

No.	REVISION	DATE	BY
5.	ISSUED FOR REVIEW	JUNE 18/20	BHB
4.	REVISED AND REISSUED FOR DRAFT PLAN APPROVAL	NOV 27/20	BHB
3.	REVISED AND REISSUED FOR DRAFT PLAN APPROVAL	JULY 29/20	BHB
2.	REVISED AND REISSUED FOR DRAFT PLAN APPROVAL	APR 3/20	BHB
1.	DRAFT PLAN	OCT 4/19	BHB

SCALE

NTS

DESIGN

BR

CHECKED

BHB

DRAWN

BHB

FOR REVIEW ONLY



NOVATECH

Engineers, Planners & Landscape Architects
Suite 200, 240 Michael Cowpland Drive
Ottawa, Ontario, Canada K2M 1P6
Telephone (613) 254-9643
Facsimile (613) 254-5867
Website www.novatech-eng.com

LOCATION
CITY OF OTTAWA
THE COMMONS

DRAWING NAME

CROSS SECTIONS - ROW

PROJECT No.

118224-00

REV

REV # 5

DRAWING No.

118224-XS1