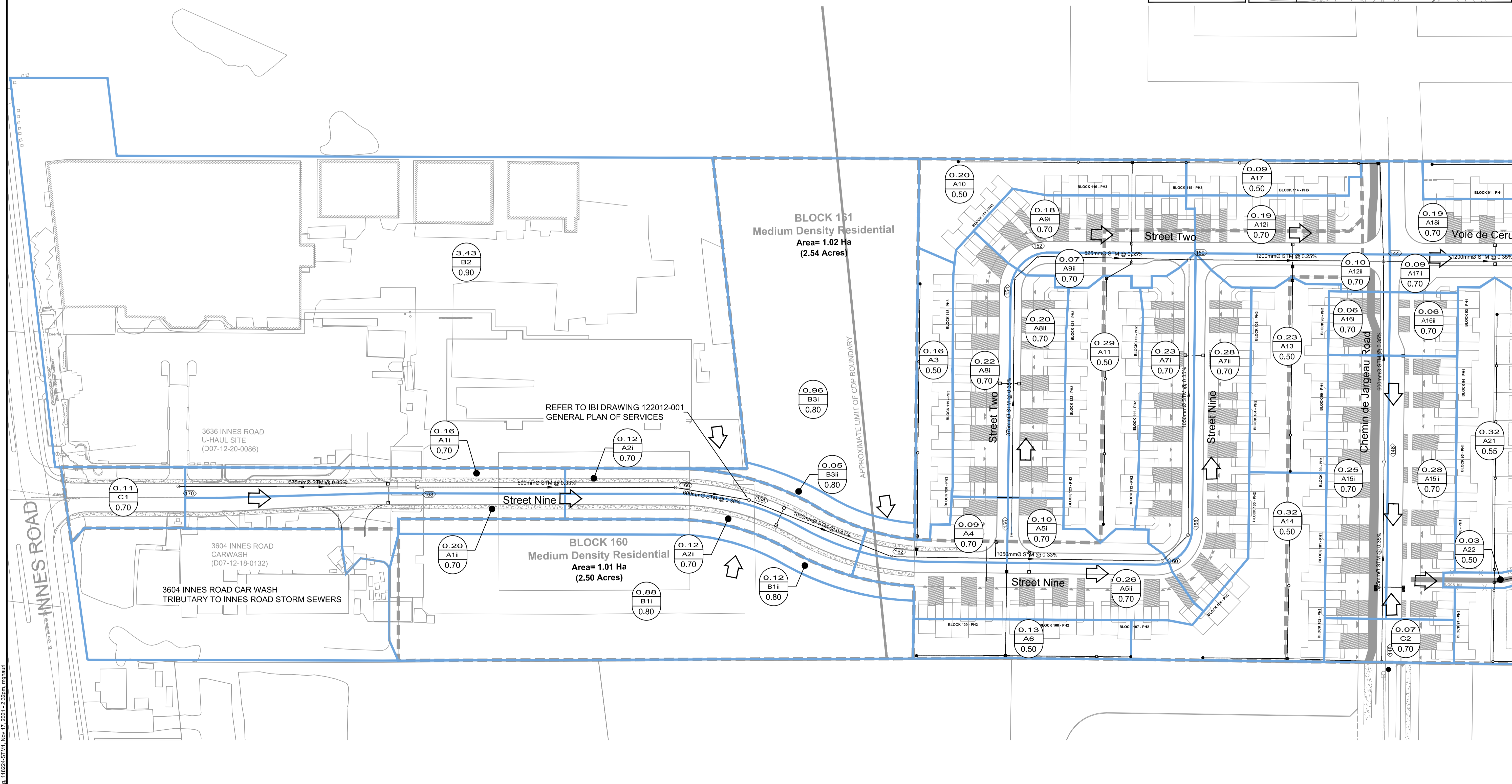
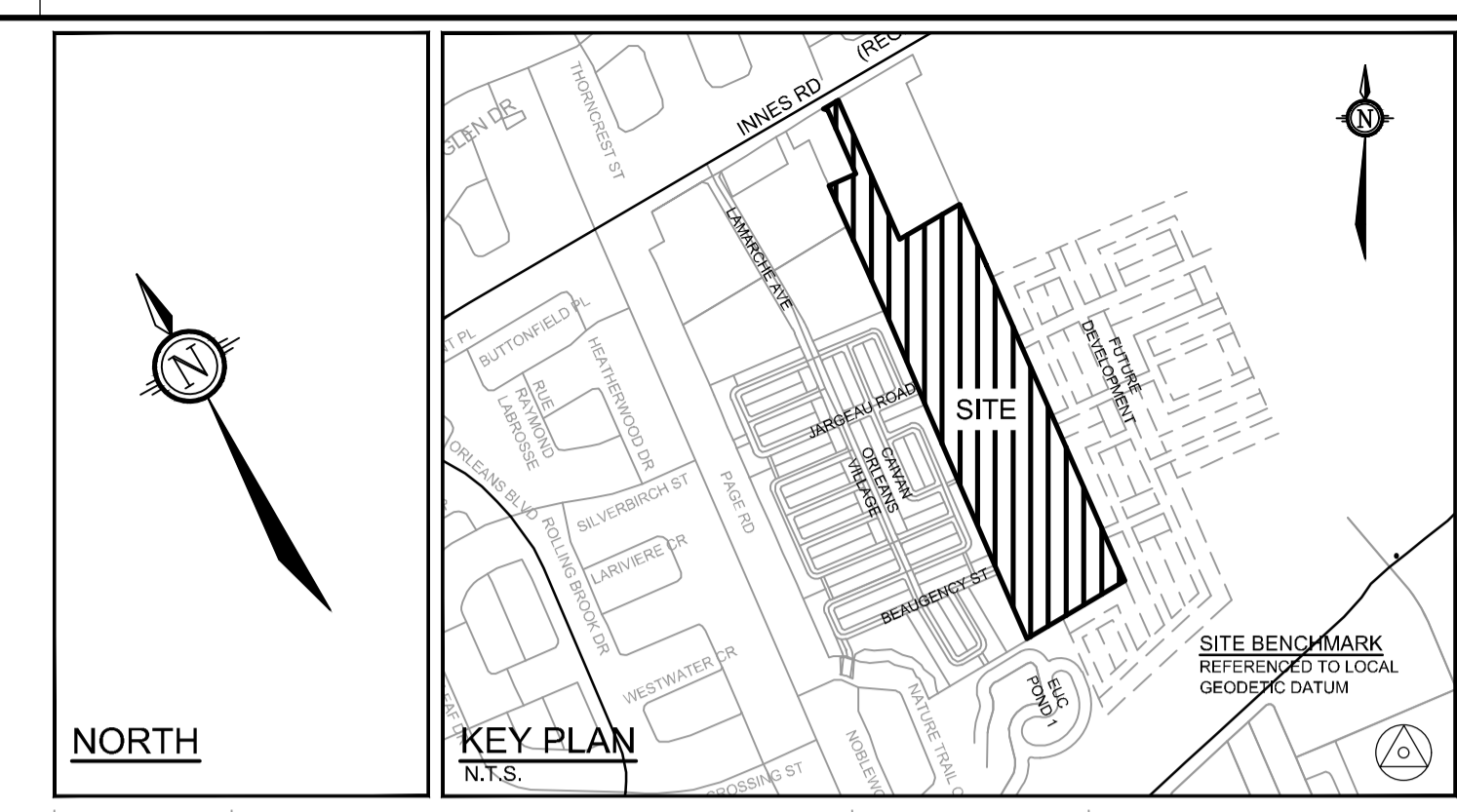


LEGEND

- DRAINAGE AREA BOUNDARY
- CATCHMENT AREA (ha)
- AREA ID
- RUNOFF COEFFICIENT
- EMERGENCY OVERLAND FLOW
- PROPOSED STORM SEWER C/W FLOW DIRECTION
- PROPOSED STORM MH



NOTE:
 THE POSITION OF ALL POLE LINES, CONDUITS, WATERMANS, SEWERS AND OTHER UNDERGROUND AND OVERGROUND UTILITIES AND STRUCTURES IS NOT NECESSARILY SHOWN ON THE CONTRACT DRAWINGS, AND WHERE SHOWN, THE ACCURACY OF THE POSITION OF SUCH UTILITIES AND STRUCTURES IS NOT GUARANTEED. BEFORE STARTING WORK, DETERMINE THE EXACT LOCATION OF ALL SUCH UTILITIES AND STRUCTURES AND ASSUME ALL LIABILITY FOR DAMAGE TO THEM.

PRELIMINARY

No.	REVISION	DATE	BY
6.	REVISED AND REISSUED FOR REVIEW	NOV 26/21	BHB
5.	ISSUED FOR COORDINATION	SEPT 30/21	BHB
4.	ISSUED FOR REVIEW	JUNE 18/21	BHB
3.	REVISED AND REISSUED FOR DRAFT PLAN APPROVAL	NOV 27/20	BHB
2.	REVISED AND REISSUED FOR DRAFT PLAN APPROVAL	APR 3/20	BHB
1.	DRAFT PLAN	OCT 4/19	BHB

SCALE

1:750

FOR REVIEW ONLY

DESIGN: BR
 CHECKED: BCS
 DRAWN: BR
 CHECKED: BCS
 APPROVED: BHB

PROFESSIONAL ENGINEER
 B. H. BAHIA
 100164647
 Nov 26, 2021
 PROVINCE OF ONTARIO

NOVATECH
 Engineers, Planners & Landscape Architects
 Suite 200, 240 Michael Cowpland Drive
 Ottawa, Ontario, Canada K2M 1P6
 Telephone: (613) 254-9643
 Facsimile: (613) 254-5867
 Website: www.novatech-eng.com

LOCATION: CITY OF OTTAWA, THE COMMONS

DRAWING NAME: **STORM DRAINAGE AREA PLAN**

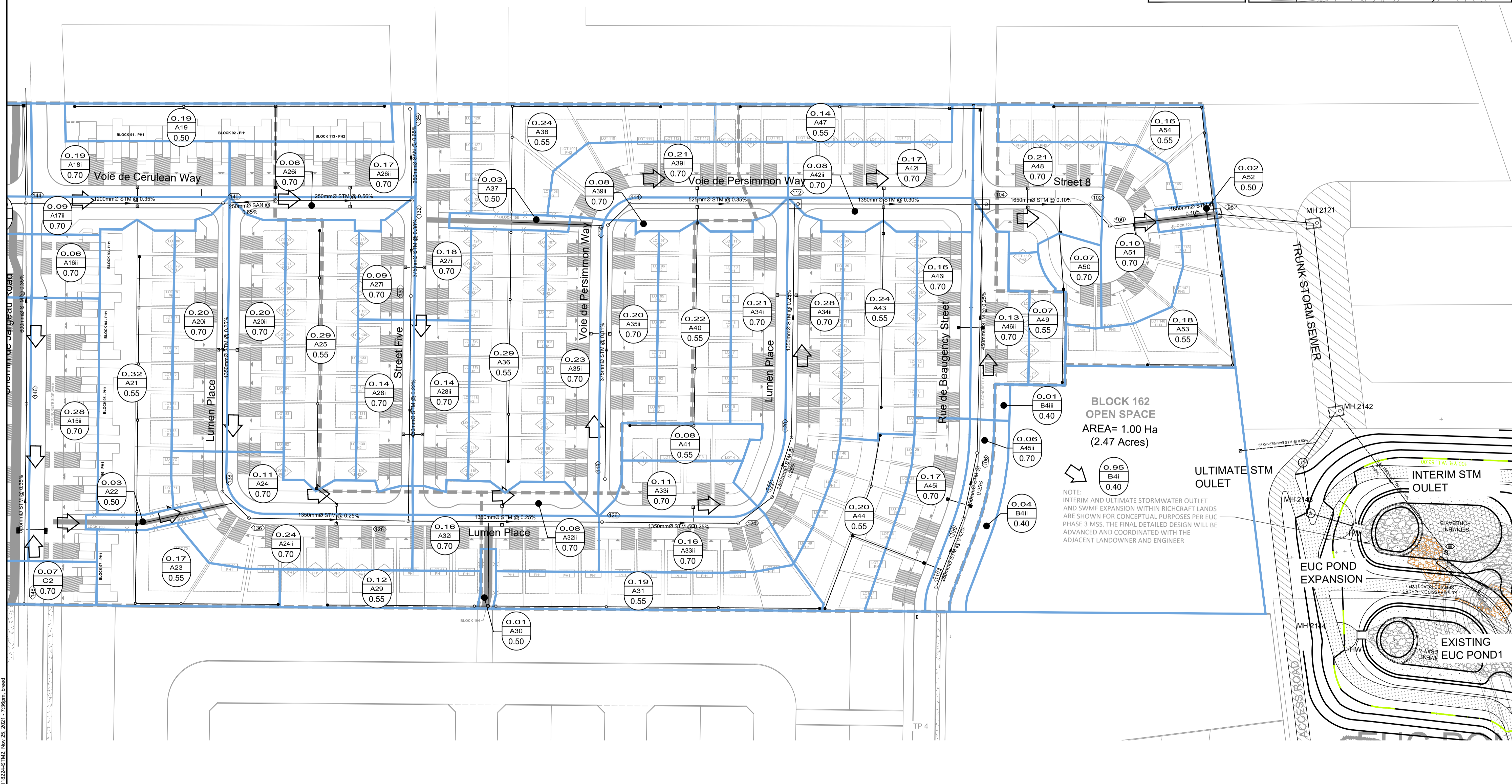
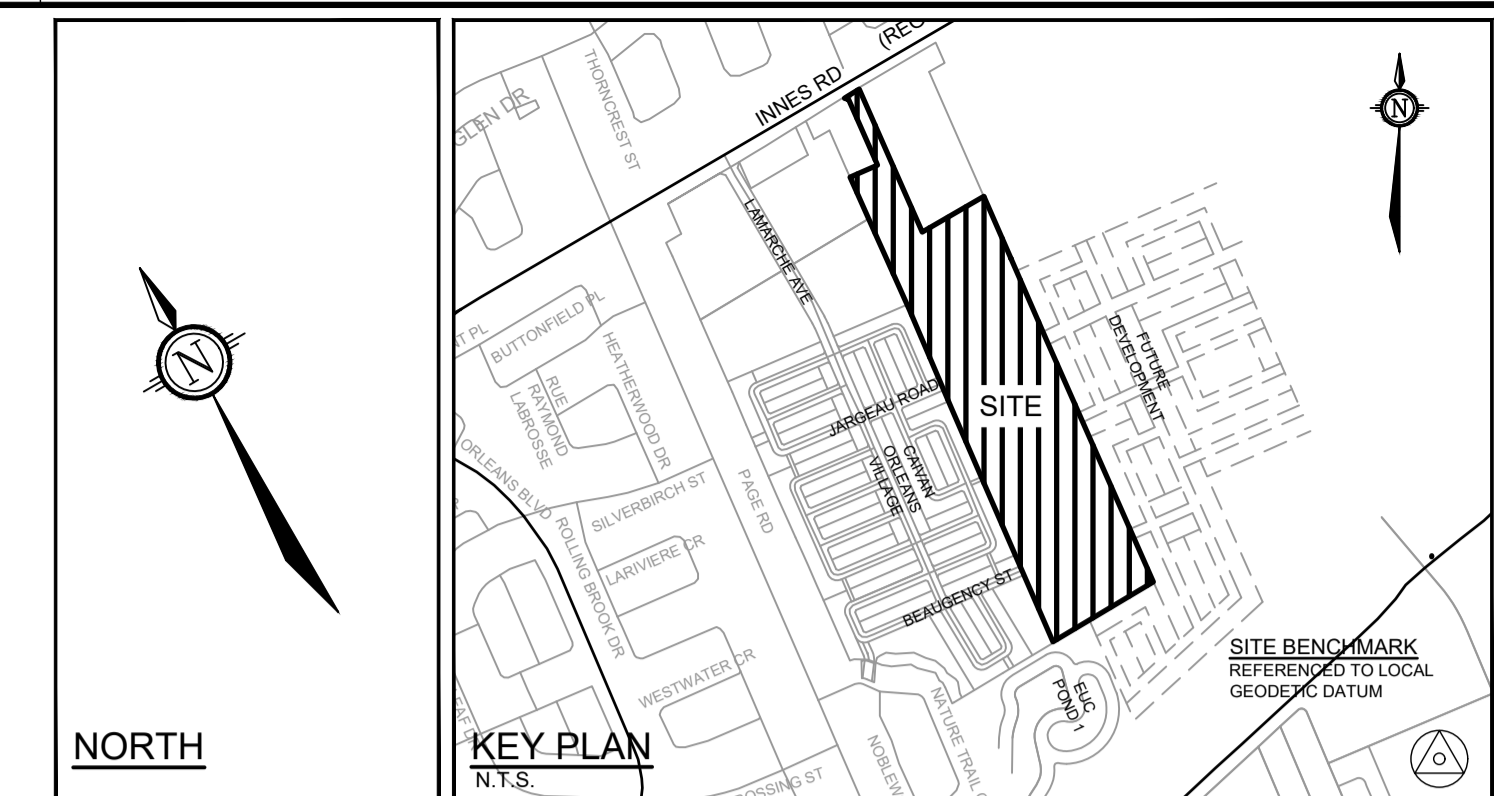
PROJECT No.: 118224-00
 REV: REV # 6
 DRAWING No.: 118224-STM1

M:\2018\118224\CADD\Design\118224-STM1.dwg, 118224-STM1, Nov 17, 2021 - 2:32pm, ngp/haun

#18535
D07-16-19-0027

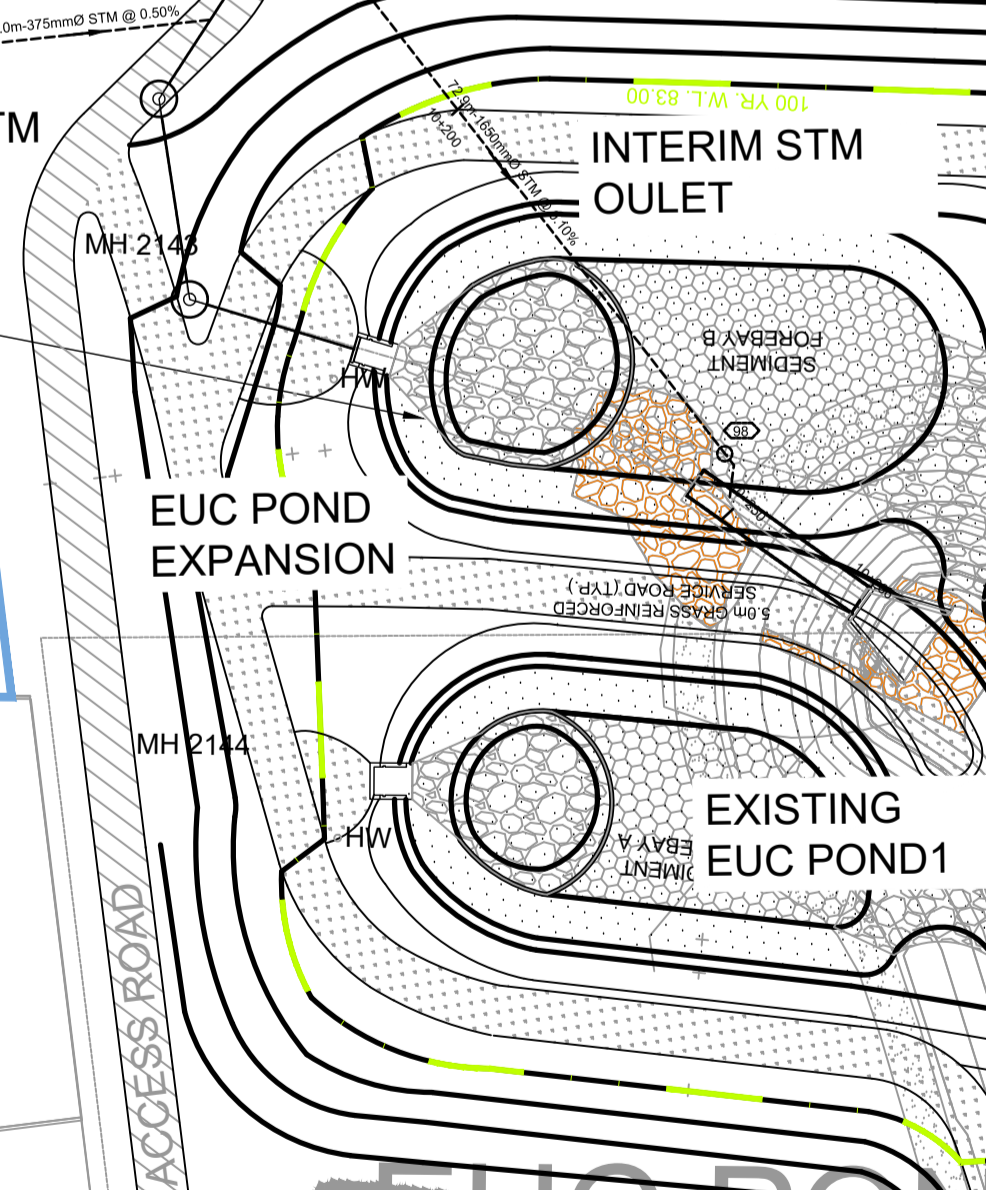
LEGEND

	DRAINAGE AREA BOUNDARY
	CATCHMENT AREA (ha) AREA ID RUNOFF COEFFICIENT
	EMERGENCY OVERLAND FLOW
	PROPOSED STORM SEWER C/W FLOW DIRECTION
	PROPOSED STORM MH



BLOCK 162 OPEN SPACE
AREA= 1.00 Ha
(2.47 Acres)

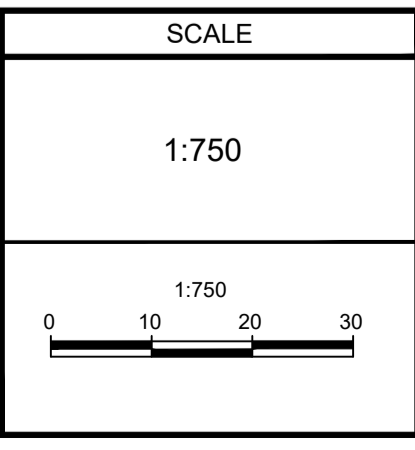
NOTE:
INTERIM AND ULTIMATE STORMWATER OUTLET AND SWMF EXPANSION WITHIN RICHCRAFT LANDS ARE SHOWN FOR CONCEPTUAL PURPOSES PER EUC PHASE 3 MSS. THE FINAL DETAILED DESIGN WILL BE ADVANCED AND COORDINATED WITH THE ADJACENT LANDOWNER AND ENGINEER



NOTE:
THE POSITION OF ALL POLE LINES, CONDUITS, WATERMANS, SEWERS AND OTHER UNDERGROUND AND OVERGROUND UTILITIES AND STRUCTURES IS NOT NECESSARILY SHOWN ON THE CONTRACT DRAWINGS, AND WHERE SHOWN, THE ACCURACY OF THE POSITION OF SUCH UTILITIES AND STRUCTURES IS NOT GUARANTEED. BEFORE STARTING WORK, DETERMINE THE EXACT LOCATION OF ALL SUCH UTILITIES AND STRUCTURES AND ASSUME ALL LIABILITY FOR DAMAGE TO THEM.

PRELIMINARY

No.	REVISION	DATE	BY
5.	REVISED AND REISSUED FOR REVIEW	NOV 28/21	BHB
4.	ISSUED FOR REVIEW	JUNE 18/21	BHB
3.	REVISED AND REISSUED FOR DRAFT PLAN APPROVAL	NOV 27/20	BHB
2.	REVISED AND REISSUED FOR DRAFT PLAN APPROVAL	APR 3/20	BHB
1.	DRAFT PLAN	OCT 4/19	BHB



DESIGN	BR
CHECKED	BCS
DRAWN	BR
CHECKED	BCS
APPROVED	BHB

FOR REVIEW ONLY

NOVATECH
Engineers, Planners & Landscape Architects
Suite 200, 240 Michael Cowpland Drive
Ottawa, Ontario, Canada K2M 1P6

Telephone: (613) 254-9643
Facsimile: (613) 254-5867
Website: www.novatech-eng.com

LOCATION CITY OF OTTAWA THE COMMONS	PROJECT No. 118224-00
DRAWING NAME STORM DRAINAGE AREA PLAN	REV # 5
	DRAWING No. 118224-STM2

C:\temp\ac\publish_2024\118224-STM2.dwg, 118224-STM2, Nov 28, 2021, 7:36pm, brend

#18535
D07-16-19-0027