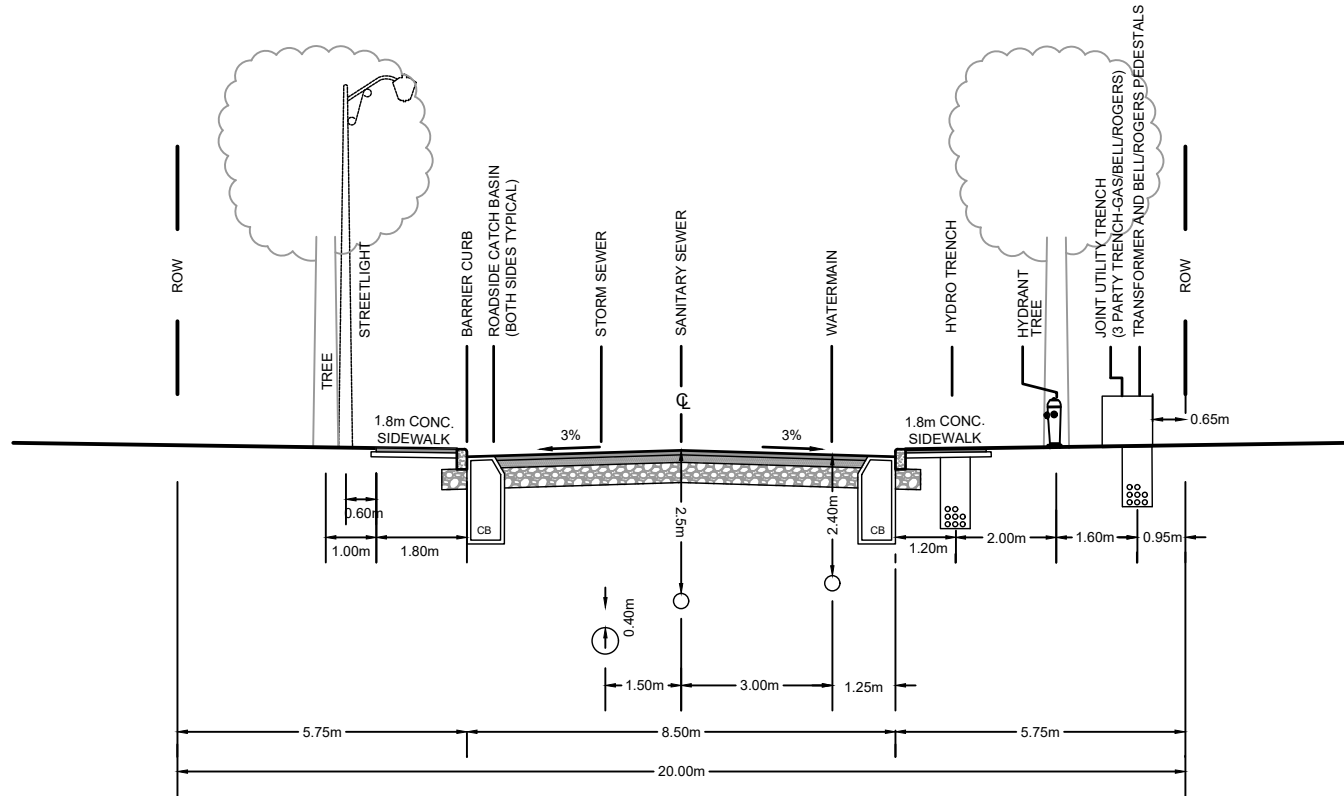
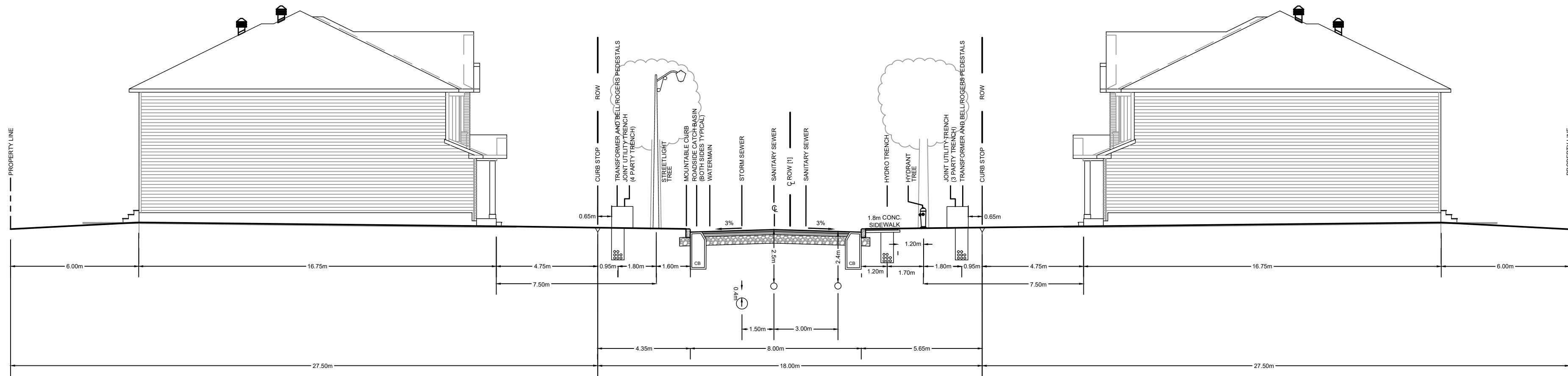


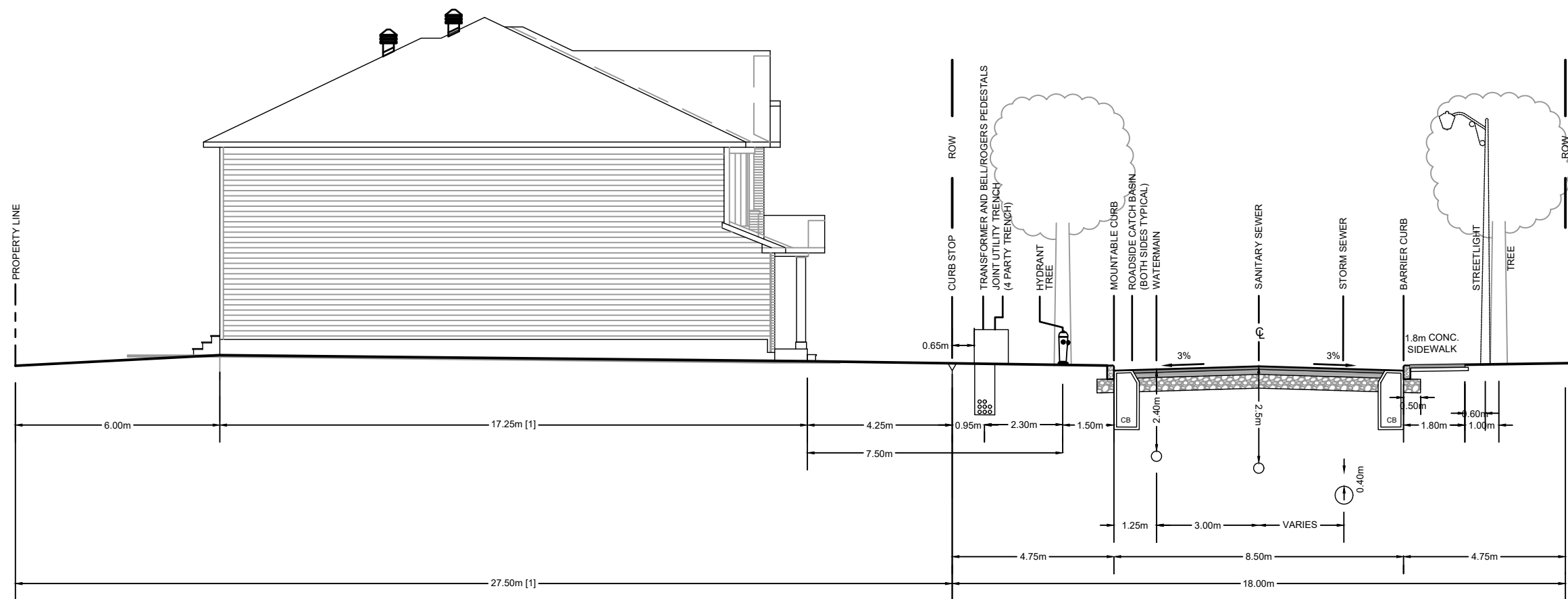
24.0m R.O.W. CROSS SECTION (TYP)  
STREET 9 - 9+000 TO 9+150



20.0m R.O.W. CROSS SECTION (TYP)  
STREET 9 - 9+150 TO 9+350



NOTE:  
[1] ROAD CROWN IS OFFSET 0.65m FROM ROW CENTRELINE.



NOTE:  
[1] FOR LOTS WITH REDUCED LOT DEPTHS OF 27.0m (LOCATED ALONG STREET 2), ALLOWABLE BUILDING DEPTHS ARE LIMITED TO 16.75m MAX.

PRELIMINARY

NOTE:  
THE POSITION OF ALL POLE LINES, CONDUITS, WATERMANS, SEWERS AND OTHER UNDERGROUND AND OVERGROUND UTILITIES AND STRUCTURES IS NOT NECESSARILY SHOWN ON THE CONTRACT DRAWINGS. AND WHERE SHOWN, THE ACCURACY OF THE POSITION OF SUCH UTILITIES AND STRUCTURES IS NOT GUARANTEED. BEFORE STARTING WORK, DETERMINE THE EXACT LOCATION OF ALL SUCH UTILITIES AND STRUCTURES AND ASSUME ALL LIABILITY FOR DAMAGE TO THEM.

No.	REVISION	DATE	BY
3.	REVISED AND REISSUED FOR REVIEW	NOV 26/21	BHB
2.	ISSUED FOR REVIEW	JUNE 18/21	BHB
1.	REVISED AND REISSUED FOR DRAFT PLAN APPROVAL	NOV 27/20	BHB

SCALE

NTS

DESIGN

BR

CHECKED

BCS

DRAWN

BR

CHECKED

BCS

APPROVED

BHB

FOR REVIEW ONLY



NOVATECH

Engineers, Planners & Landscape Architects  
Suite 200, 240 Michael Cowpland Drive  
Ottawa, Ontario, Canada K2M 1P6

Telephone (613) 254-9643  
Facsimile (613) 254-5867  
Website www.novatech-eng.com

LOCATION  
CITY OF OTTAWA  
THE COMMONS

DRAWING NAME

CROSS SECTIONS - ROW

PROJECT No.

118224-00

REV

REV # 3

DRAWING No.

118224-XS2