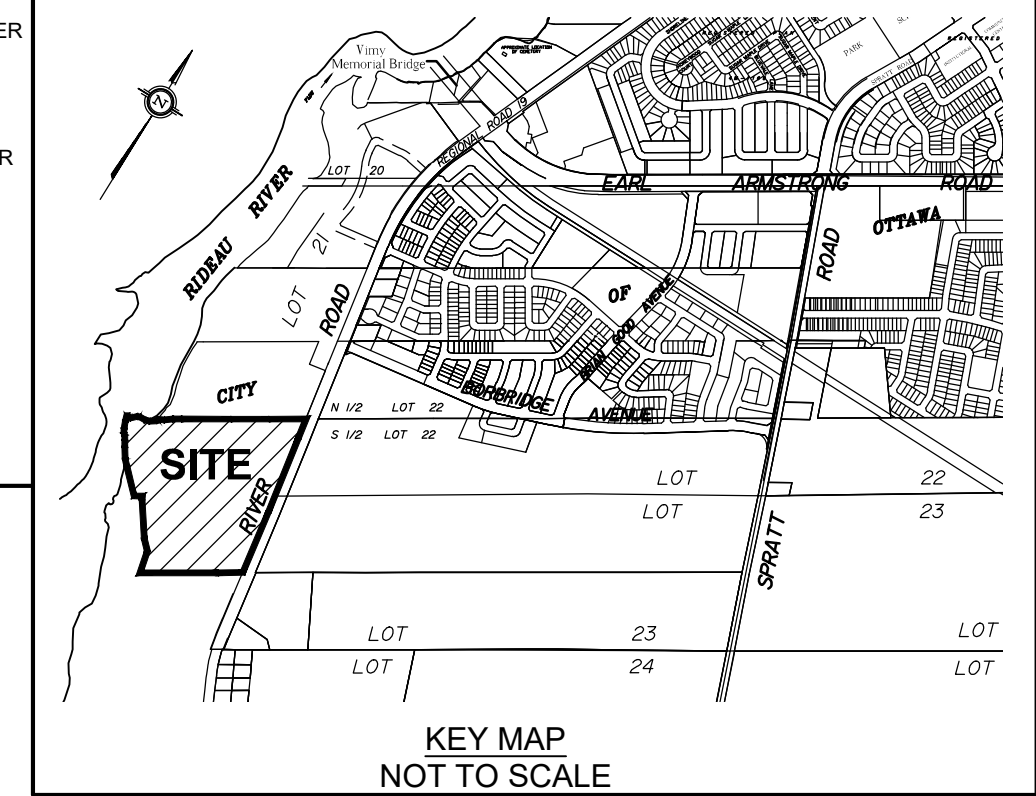


SUBJECT TO THE CONDITIONS, IF ANY, SET FORTH IN OUR LETTER DATED \_\_\_\_\_

THIS DRAFT PLAN IS APPROVED BY THE CITY OF OTTAWA UNDER SECTION 51 OF THE PLANNING ACT. THIS \_\_\_\_\_ DAY OF \_\_\_\_\_ 20\_\_.

--- DON HERWEYER, MCIIP RPP, MANAGER ---  
DEVELOPMENT REVIEW-SOUTH  
PLANNING, INFRASTRUCTURE AND ECONOMIC  
DEVELOPMENT DEPARTMENT, CITY OF OTTAWA



**DRAFT PLAN OF SUBDIVISION OF  
PART OF LOTS 22 And 23  
BLOCK FRONT CONCESSION  
RIDEAU FRONT**  
Geographic Township of Gloucester  
**CITY OF OTTAWA**  
Prepared by Annis, O'Sullivan, Vollebek Ltd.

Scale 1 : 1000  
40 30 20 10 0 10 20 30 40 Metres

Metric  
DISTANCES SHOWN ON THIS PLAN ARE IN METRES AND CAN BE CONVERTED TO FEET BY DIVIDING BY 0.3048

**SURVEYOR'S CERTIFICATE**

I CERTIFY THAT:  
The boundaries of the lands to be subdivided and their relationship to adjoining lands have been accurately and correctly shown.

Date \_\_\_\_\_ Andre Roy  
ONTARIO LAND SURVEYOR

**OWNER'S CERTIFICATE**

This is to certify that we are the owners of the lands to be subdivided and that this plan was prepared in accordance with our instructions.

Date \_\_\_\_\_ Jim Burghout  
Authorized Signing Officer  
Claridge Homes Corporation  
I have the authority to bind the corporation.

**ADDITIONAL INFORMATION REQUIRED UNDER SECTION 51-17 OF THE PLANNING ACT**

- (a) see plan
- (b) see plan
- (c) see plan
- (d) single family residential housing and storm water management lands
- (e) see plan
- (f) see plan
- (g) see plan
- (h) City of Ottawa
- (i) see soils report
- (j) see plan
- (k) sanitary, storm sewers, municipal water, bell, hydro, cable and gas to be available
- (l) see plan

