

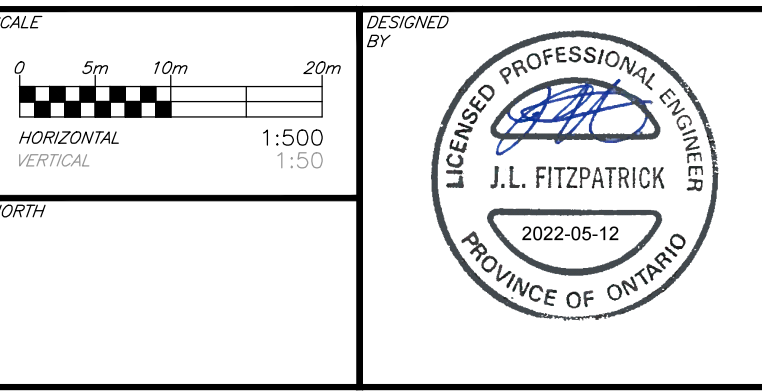
STATION	ELEVATIONS PROPOSED EXISTING	TOP OF WATERMAIN ELEVATION	STORM SEWER INVERTS	SANITARY SEWER INVERTS	CHAINAGE	ELEVATIONS PROPOSED EXISTING
0+160	121.97	119.36	80.9m-450mm ^Ø CONCRETE PIPES 100-D STM @ 2.00%	83.7m-250 PVC DR-35 SAN @ 2.00%	0+160	121.97
0+180	121.86	119.36			0+180	121.86
0+200	121.75	119.36			0+200	121.75
0+210.4	121.64	119.36			0+210.4	121.64
0+211.9	121.53	119.36			0+211.9	121.53
0+220	121.42	119.36			0+220	121.42
0+233.4	121.30	119.36			0+233.4	121.30
0+240	121.19	119.36			0+240	121.19
0+250	121.08	119.36			0+250	121.08
0+260	120.97	119.36			0+260	120.97
0+270	120.86	119.36			0+270	120.86
0+280	120.75	119.36			0+280	120.75
0+288.4	120.64	119.36			0+288.4	120.64
0+298.0	120.53	119.36			0+298.0	120.53
0+300	120.42	119.36			0+300	120.42
0+310	120.31	119.36			0+310	120.31
0+320	120.21	119.36			0+320	120.21
0+330	120.15	119.36			0+330	120.15
0+340	120.10	119.36			0+340	120.10
0+350	120.08	119.36			0+350	120.08
0+360	120.06	119.36			0+360	120.06
0+370	120.11	119.36			0+370	120.11
0+380	120.14	119.36			0+380	120.14
0+390	120.17	119.36			0+390	120.17
0+400	120.20	119.36			0+400	120.20
0+410	120.23	119.36			0+410	120.23
0+420	120.26	119.36			0+420	120.26
0+430	120.30	119.36			0+430	120.30
0+440	120.27	119.36			0+440	120.27
0+450	120.22	119.36			0+450	120.22
0+460	120.18	119.36			0+460	120.18
0+470	120.16	119.36			0+470	120.16
0+480	120.14	119.36			0+480	120.14
0+490	120.12	119.36			0+490	120.12
0+500	120.10	119.36			0+500	120.10

CAUTION: THE POSITION OF ALL POLE LINES, CONDUITS, WATERMANS, SEWERS AND OTHER UNDERGROUND AND OVERGROUND UTILITIES AND STRUCTURES IS NOT NECESSARILY SHOWN ON THE CONTRACT DRAWINGS, AND WHERE SHOWN, THE ACCURACY OF THE POSITION OF SUCH UTILITIES AND STRUCTURES IS NOT GUARANTEED. BEFORE STARTING WORK, DETERMINE THE EXACT LOCATION OF ALL SUCH UTILITIES AND STRUCTURES AND ASSUME ALL LIABILITY FOR DAMAGE TO THEM.

JOB BENCH MARK
 TOP OF HEAD OF MAGNETIC NAIL SET IN SIDE OF CONCRETE SIGN
 BASE 0.2± ABOVE GRADE ELEVATION=120.77
 NORTHING=5014575.29 EASTING=349007.23

TOPOGRAPHIC INFORMATION
 PART OF LOT 12, CONCESSION 12, GEOGRAPHIC TOWNSHIP OF GOULBOURN, CITY OF OTTAWA.
 TOPOGRAPHIC INFORMATION PROVIDED BY FAIRHALL MOFFATT & WOODLAND LIMITED O.L.S (P3862) SURVEY DATED JANUARY 14, 2020.
 SITE GRID SYSTEM MTM NAD 83, ZONE 9.

REV	REVISION DESCRIPTION	DATE	BY	APPD
2	ISSUED FOR APPROVAL	05/12/22	SK	BMT
1	SUBMISSION NO.2	04/27/21	SK	BMT



DESIGNED BY: J.L. FITZPATRICK
 REVIEWED BY: B.M. THOMAS

LATITUDE HOMES
 1202 CARP ROAD
 STITTVILLE, ON. K2S 1B9

exp Services Inc.
 1-877-668-1899 | 1-613-225-7330
 255 Colborne Drive, Unit 100
 Ottawa, ON K2B 8K6
 Canada
 www.exp.com

• BUILDINGS • EARTH & ENVIRONMENT • ENERGY •
 • INDUSTRIAL • INFRASTRUCTURE • SUSTAINABILITY •

BASE PLAN	PROJECT	PROJECT NO.
SK	HAZELDEAN HORIZONS	258780
JLF	6171 HAZELDEAN ROAD	SURVEY: 238800-FMW
BMT	OTTAWA, ONTARIO.	DATE: 24/07/20
SK	PLAN AND PROFILE, STREET 2	DRAWING NO. C302
JLF	STA.0+150 TO STA.0+300	
BMT		