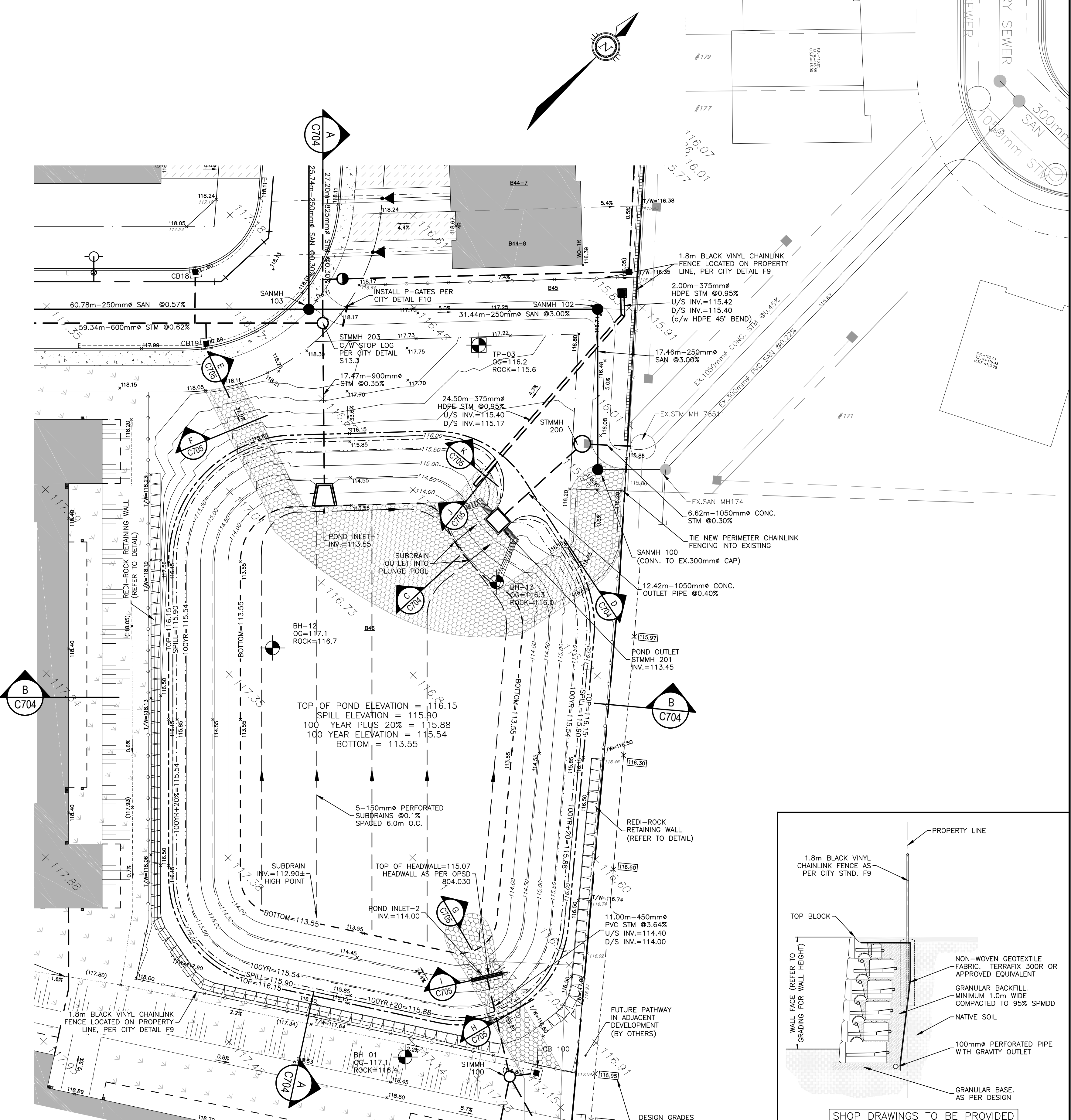


CONTROL MANHOLE 201 DETAILS
SCALE: 1:25



PLAN VIEW
SCALE: 1:250

CAUTION
THE POSITION OF ALL POLE LINES, CONDUITS, WATERMANS, SEWERS AND OTHER UNDERGROUND AND OVERGROUND UTILITIES AND STRUCTURES IS NOT NECESSARILY SHOWN ON THE CONTRACT DRAWINGS, AND WHERE SHOWN, THE ACCURACY OF THE POSITION OF SUCH UTILITIES AND STRUCTURES IS NOT GUARANTEED. BEFORE STARTING WORK, DETERMINE THE EXACT LOCATION OF ALL SUCH UTILITIES AND STRUCTURES AND ASSUME ALL LIABILITY FOR DAMAGE TO THEM.

JOB BENCH MARK JBM
TOP OF HEAD OF MAGNETIC NAIL SET IN SIDE OF CONCRETE SIGN
BASE 0.2 \pm ABOVE GRADE ELEVATION=120.77
NORTHING=5014575.29 EASTING=349007.23

TOPOGRAPHIC INFORMATION
PART OF LOT 12, CONCESSION 12, GEOGRAPHIC TOWNSHIP OF GOULBOURN, CITY OF OTTAWA.
TOPOGRAPHIC INFORMATION PROVIDED BY FAIRHALL MOFFATT & WOODLAND LIMITED O.L.S (P3862) SURVEY DATED JANUARY 14, 2020.
SITE GRID SYSTEM NTM NAD 83, ZONE 9.

| REV | REVISION DESCRIPTION | DATE | BY | APPD |
|-----|----------------------|----------|-----|------|
| 1 | ISSUED FOR APPROVAL | 05/12/22 | SAB | BMT |

SCALE: 0 2m 4m 10m
HORIZONTAL: 1:250

DESIGNED BY: J.L. FITZPATRICK
LICENSED PROFESSIONAL ENGINEER
PROVINCE OF ONTARIO
2022-05-12

REVIEWED BY: B.M. THOMAS
LICENSED PROFESSIONAL ENGINEER
PROVINCE OF ONTARIO
2022-05-12

OWNER: LATITUDE HOMES
1202 CARP ROAD
STITTSVILLE, ON. K2S 1B9

exp. SERVICES INC.
1-813-688-1899 | 1-613-225-7330
200 DUNDAS ST. W. UNIT 100
OTTAWA, ON K2B 8R6
Canada
www.exp.com

BASEPLAN: SK
DESIGN: JLF
CHECKED: BMT
CAD: SK
PROJECT MANAGER: JLF
APPROVED: BMT

PROJECT: HAZELDEAN HORIZONS
6171 HAZELDEAN ROAD
OTTAWA, ONTARIO.

PROJECT No. 258780
SURVEY: 238800-FMW
DATE: 24/07/20
DRAWING No. C703

DETAIL SHEET 4
STORMWATER MANAGEMENT FACILITY

exp. SERVICES INC.
1-813-688-1899 | 1-613-225-7330
200 DUNDAS ST. W. UNIT 100
OTTAWA, ON K2B 8R6
Canada
www.exp.com

• BUILDINGS • EARTH & ENVIRONMENT • ENERGY •
• INDUSTRIAL • INFRASTRUCTURE • SUSTAINABILITY •