

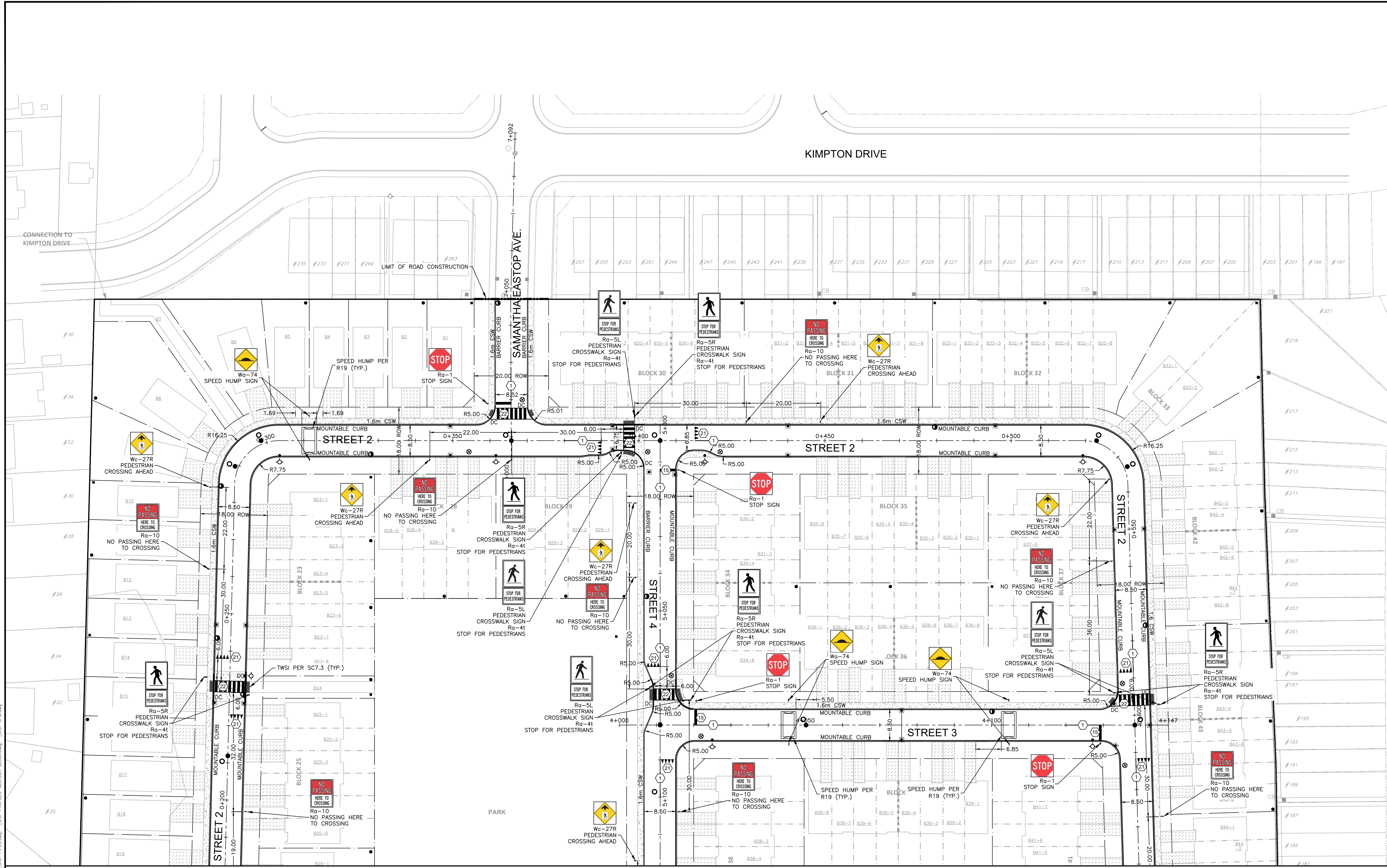
LEGEND

- PROPERTY LINE
- PROPOSED SANITARY MH/SEWER
- PROPOSED STORM MH/SEWER
- PROPOSED REAR YARD CATCH-BASIN TEE/ ELBOW PER CITY DETAIL S30 & S31
- PROPOSED 600x600 PCC CATCH-BASIN PER OPSD 705.010
- PROPOSED 600x600 PCC CATCH-BASIN PER OPSD 705.010 C/W ICD
- PROPOSED 1200mm² PCC CATCH-BASIN MAINTENANCE HOLE PER OPSD 701.010 C/W ICD
- PROPOSED FIRE HYDRANT & VALVE
- PROPOSED WATERMAIN FITTINGS
- TACTILE WALKING SURFACE INDICATOR (TWS) AS PER CITY OF OTTAWA DWG. NO. SC7.3
- SPEED HUMP AS PER CITY OF OTTAWA DWG. NO. R19
- ROAD SIGN
- DEPRESSED CURB
- LANDSCAPE
- CONCRETE
- DRIVEWAY

PAVEMENT MARKING LEGEND:

1	SOLID YELLOW, 10cm
2	SOLID DOUBLE YELLOW, 10cm
3	363 BROKEN YELLOW, 10cm
4	SOLID YELLOW, 20cm
5	SOLID WHITE, 10cm
6	333 BROKEN WHITE, 10cm
7	363 BROKEN WHITE, 10cm
8	393 BROKEN WHITE, 10cm
9	SOLID WHITE, 20cm
10	111 BROKEN WHITE, 20cm
11	333 BROKEN WHITE, 20cm
12	333 BROKEN WHITE, 30cm
13	SOLID WHITE, 30cm
14	SOLID WHITE, 50cm
15	SOLID WHITE, 60cm
20	SOLID WHITE, SYMBOLS AND ARROWS
21	SHARKS TEETH, WHITE TRIANGLE, 60cmx30cm AT 30cm SPACING
22	LADDER CROSSWALK, 60cmx300cm BLOCKS @ 60cm SPACING, OUTLINED BY TWO SOLID WHITE 10cm TRANSVERSE LINES

- NOTES:**
- 333, 363, 393 DENOTES PAVEMENT MARKING SPACING (IE, 3m LINE, 3m GAP, 3m LINE)
 - USE (P) TO DENOTE PAVEMENT MARKING
 - USE (D) TO DENOTE PAVEMENT MARKING, DURABLE
 - USE (T) TO DENOTE PAVEMENT MARKING, TEMPORARY
 - USE (R) TO DENOTE PAVEMENT MARKING, TEMPORARY-REMOVABLE
 - ALL SIGNING, MARKING AND DELINEATION MUST CONFORM TO ONTARIO TRAFFIC MANUAL (OTM)



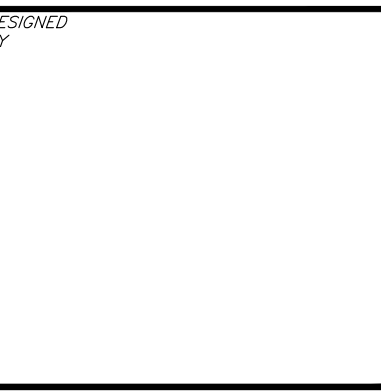
MATCHLINE SEE DWG. C801

CAUTION
THE POSITION OF ALL POLE LINES, CONDUITS, WATERMANS, SEWERS AND OTHER UNDERGROUND AND OVERGROUND UTILITIES AND STRUCTURES IS NOT NECESSARILY SHOWN ON THE CONTRACT DRAWINGS, AND WHERE SHOWN, THE ACCURACY OF THE POSITION OF SUCH UTILITIES AND STRUCTURES IS NOT GUARANTEED. BEFORE STARTING WORK, DETERMINE THE EXACT LOCATION OF ALL SUCH UTILITIES AND STRUCTURES AND ASSUME ALL LIABILITY FOR DAMAGE TO THEM.

JOB BENCH MARK JBM ▲
TOP OF HEAD OF MAGNETIC NAIL SET IN SIDE OF CONCRETE SIGN
BASE 0.2± ABOVE GRADE ELEVATION=120.77
NORTHING=5014575.29 EASTING=349007.23

TOPOGRAPHIC INFORMATION
PART OF LOT 12, CONCESSION 12, GEOGRAPHIC TOWNSHIP OF GOULBOURN, CITY OF OTTAWA.
TOPOGRAPHIC INFORMATION PROVIDED BY FAIRHALL MOFFATT & WOODLAND LIMITED O.L.S (TP3862) SURVEY DATED JANUARY 14, 2020.
SITE GRID SYSTEM NTM NAD 83, ZONE 9.

REV	REVISION DESCRIPTION	DATE	BY	APPD
1	ISSUED FOR APPROVAL	14/10/22	SJK	YMM



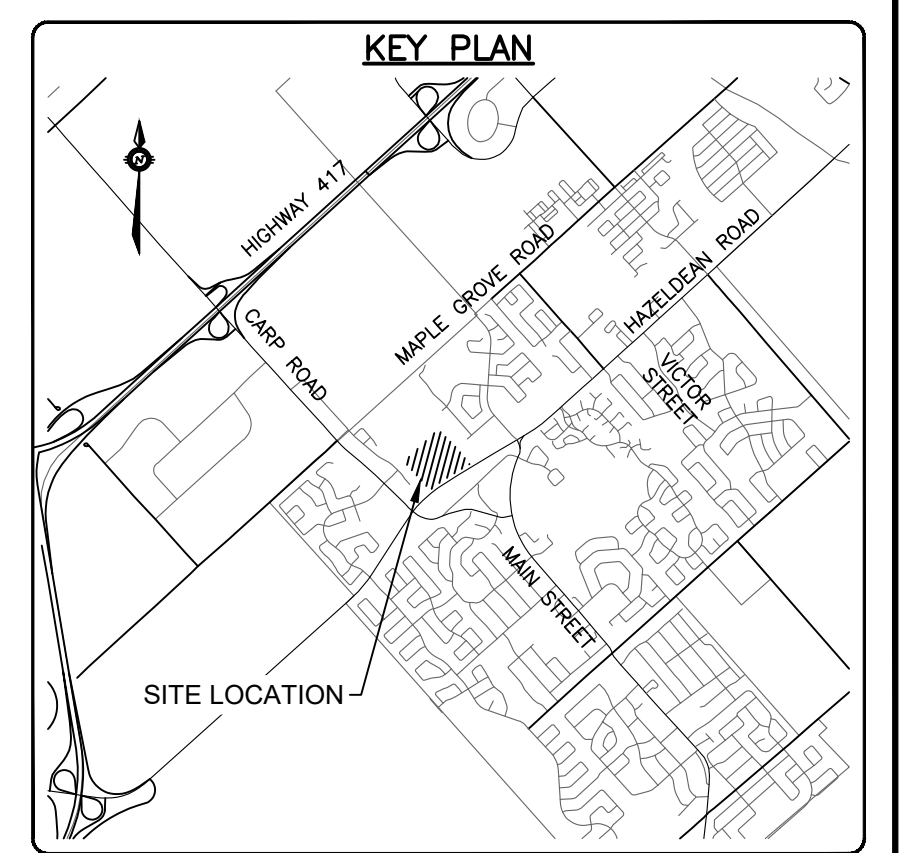
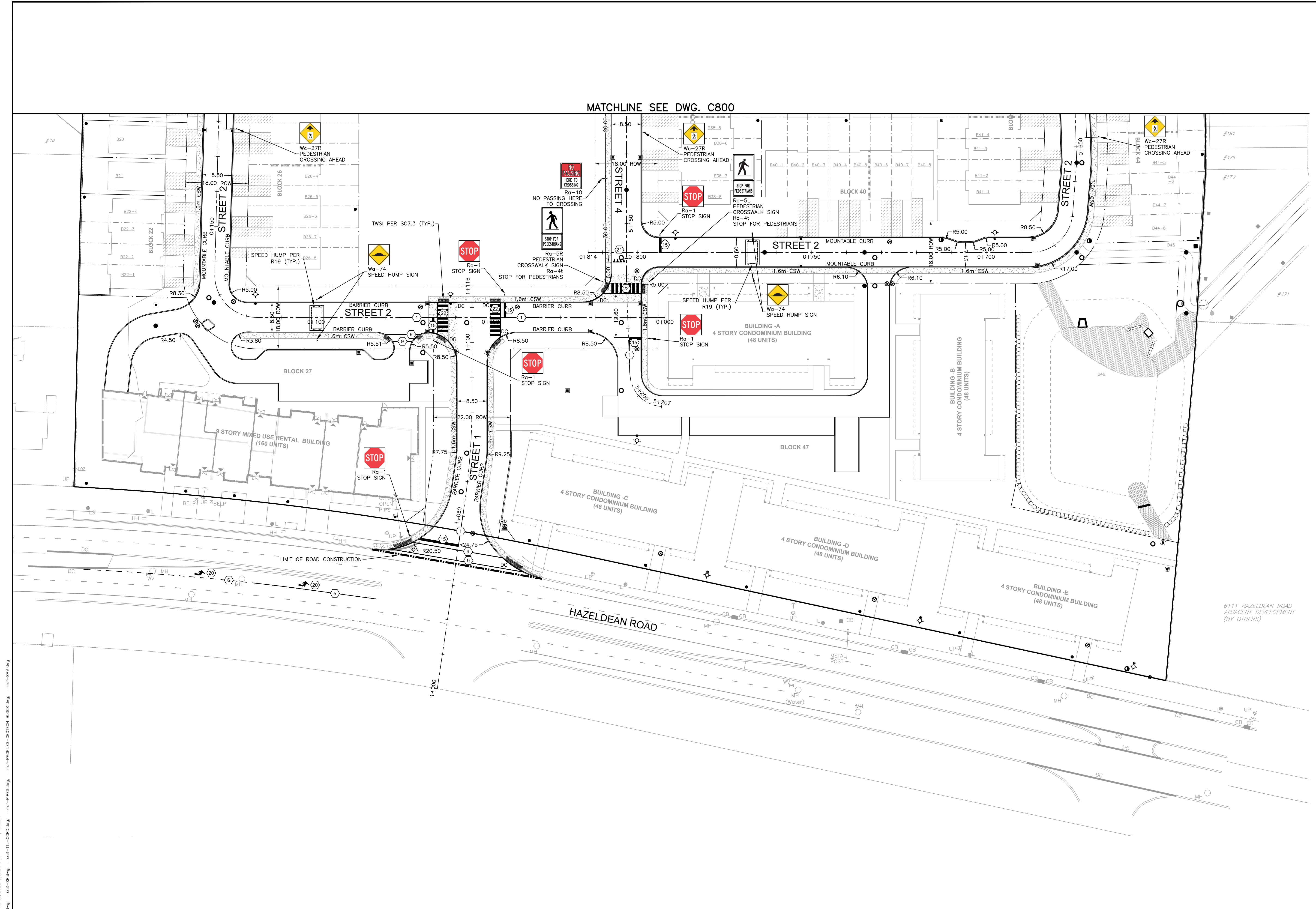
LATITUDE HOMES
1202 CARP ROAD
STITTSVILLE, ON. K2S 1B9

exp. Services Inc.
1-416-688-1899 | 1-613-225-7330
3625 Casselman Drive, Unit 100
Ottawa, ON K2B 8H6
Canada
www.exp.com

• BUILDINGS • EARTH & ENVIRONMENT • ENERGY •
• INDUSTRIAL • INFRASTRUCTURE • SUSTAINABILITY •

DESIGNER	SAB
CHECKED	SJK
PROJECT MANAGER	YMM
DATE	24/07/20
DRAWING NO.	C800

PROJECT	HAZELDEAN HORIZONS	PROJECT No.	258780
	6171 HAZELDEAN ROAD	SURVEY	238800-FMW
	OTTAWA, ONTARIO.	DATE	24/07/20
TITLE	PAVEMENT MARKINGS, SIGNAGE AND GEOMETRY PLAN	DRAWING No.	C800



- LEGEND**
- PROPERTY LINE
 - PROPOSED SANITARY MH/SEWER
 - PROPOSED STORM MH/SEWER
 - PROPOSED REAR YARD CATCH-BASIN TEE/ ELBOW PER CITY DETAIL S30 & S31
 - PROPOSED 600x600 PCC CATCH-BASIN PER OPSD 705.010
 - PROPOSED 600x600 PCC CATCH-BASIN PER OPSD 705.010 C/W ICD
 - PROPOSED 1200mm PCC CATCH-BASIN MAINTENANCE HOLE PER OPSD 701.010 C/W ICD
 - ⊕ PROPOSED FIRE HYDRANT & VALVE
 - ⊕ PROPOSED WATERMAIN FITTINGS
 - ▨ TACTILE WALKING SURFACE INDICATOR (TWS) AS PER CITY OF OTTAWA DWG. NO. SC7.3
 - ▭ SPEED HUMP AS PER CITY OF OTTAWA DWG. NO. R19
 - ⊕ ROAD SIGN
 - DEPRESSED CURB
 - ▨ LANDSCAPE
 - ▨ CONCRETE
 - ▨ DRIVEWAY

- PAVEMENT MARKING LEGEND:**
- | | |
|----|---|
| 1 | SOLID YELLOW, 10cm |
| 2 | SOLID DOUBLE YELLOW, 10cm |
| 3 | 363 BROKEN YELLOW, 10cm |
| 4 | SOLID YELLOW, 20cm |
| 5 | SOLID WHITE, 10cm |
| 6 | 333 BROKEN WHITE, 10cm |
| 7 | 363 BROKEN WHITE, 10cm |
| 8 | 393 BROKEN WHITE, 10cm |
| 9 | SOLID WHITE, 20cm |
| 10 | 111 BROKEN WHITE, 20cm |
| 11 | 333 BROKEN WHITE, 20cm |
| 12 | 333 BROKEN WHITE, 30cm |
| 13 | SOLID WHITE, 30cm |
| 14 | SOLID WHITE, 50cm |
| 15 | SOLID WHITE, 60cm |
| 20 | SOLID WHITE, SYMBOLS AND ARROWS |
| 21 | SHARKS TEETH, WHITE TRIANGLE, 60cmx30cm AT 30cm SPACING |
| 22 | LADDER CROSSWALK, 60cmx300cm BLOCKS @ 60cm SPACING, OUTLINED BY TWO SOLID WHITE 10cm TRANSVERSE LINES |

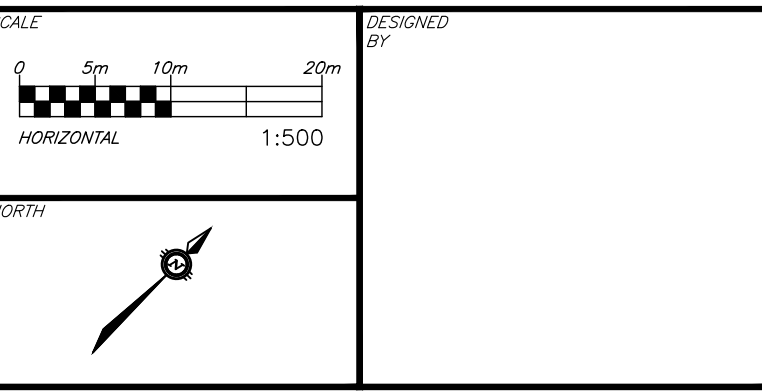
- NOTES:**
- 333, 363, 393 DENOTES PAVEMENT MARKING SPACING (IE., 3m LINE, 3m GAP, 3m LINE)
 - USE (⊕) TO DENOTE PAVEMENT MARKING
 - USE (⊕) TO DENOTE PAVEMENT MARKING, DURABLE
 - USE (⊕) TO DENOTE PAVEMENT MARKING, TEMPORARY
 - USE (⊕) TO DENOTE PAVEMENT MARKING, TEMPORARY-REMOVABLE
 - ALL SIGNING, MARKING AND DELINEATION MUST CONFORM TO ONTARIO TRAFFIC MANUAL (OTM)

CAUTION
THE POSITION OF ALL POLE LINES, CONDUITS, WATERMANS, SEWERS AND OTHER UNDERGROUND AND OVERGROUND UTILITIES AND STRUCTURES IS NOT NECESSARILY SHOWN ON THE CONTRACT DRAWINGS, AND WHERE SHOWN, THE ACCURACY OF THE POSITION OF SUCH UTILITIES AND STRUCTURES IS NOT GUARANTEED. BEFORE STARTING WORK, DETERMINE THE EXACT LOCATION OF ALL SUCH UTILITIES AND STRUCTURES AND ASSUME ALL LIABILITY FOR DAMAGE TO THEM.

JOB BENCH MARK JBM ▲
TOP OF HEAD OF MAGNETIC NAIL SET IN SIDE OF CONCRETE SIGN
BASE 0.2± ABOVE GRADE ELEVATION=120.77
NORTHING=5014575.29 EASTING=349007.23

TOPOGRAPHIC INFORMATION
PART OF LOT 12, CONCESSION 12, GEOGRAPHIC TOWNSHIP OF GOULBOURN, CITY OF OTTAWA.
TOPOGRAPHIC INFORMATION PROVIDED BY FAIRHALL MOFFATT & WOODLAND LIMITED O.L.S (TP3862) SURVEY DATED JANUARY 14, 2020.
SITE GRID SYSTEM NTM NAD 83, ZONE 9.

REV	REVISION DESCRIPTION	DATE	BY	APPD
1	ISSUED FOR APPROVAL	14/10/22	SJK	YMM



DESIGNED BY SJK
CHECKED BY YMM
CAD SJK
PROJECT MANAGER MJDC
APPROVED YMM

OWNER
LATITUDE HOMES
1202 CARP ROAD
STITTSVILLE, ON. K2S 1B9

exp.
exp Services Inc.
1-1-613-688-1899 | F +1-613-225-7330
3055 Steeles Avenue East, Unit 100
Ottawa, ON K2B 8K6
Canada
www.exp.com
• BUILDINGS • EARTH & ENVIRONMENT • ENERGY •
• INDUSTRIAL • INFRASTRUCTURE • SUSTAINABILITY •

PROJECT
SAB
SJK
YMM
SJK
MJDC
YMM

PROJECT
HAZELDEAN HORIZONS
6171 HAZELDEAN ROAD
OTTAWA, ONTARIO.

TITLE
PAVEMENT MARKINGS, SIGNAGE
AND GEOMETRY PLAN

PROJECT No. 258780
SURVEY 238800-FMW
DATE 24/07/20
DRAWING No. C801

Reference: \\na\h\p\c\2022\2022-07-06_mh\proj\012\12-1136_Planet_Planet_10\12\2022_1136_90_Planet.dwg
 User: SJK Date: 10/11/2022 11:36:56 AM Plotted by: SJK
 Plotter: HP DesignJet T1100 Plotter
 References: \\na\h\p\c\2022\2022-07-06_mh\proj\012\12-1136_Planet_Planet_10\12\2022_1136_90_Planet.dwg
 \\na\h\p\c\2022\2022-07-06_mh\proj\012\12-1136_Planet_Planet_10\12\2022_1136_90_Planet.dwg
 \\na\h\p\c\2022\2022-07-06_mh\proj\012\12-1136_Planet_Planet_10\12\2022_1136_90_Planet.dwg
 \\na\h\p\c\2022\2022-07-06_mh\proj\012\12-1136_Planet_Planet_10\12\2022_1136_90_Planet.dwg