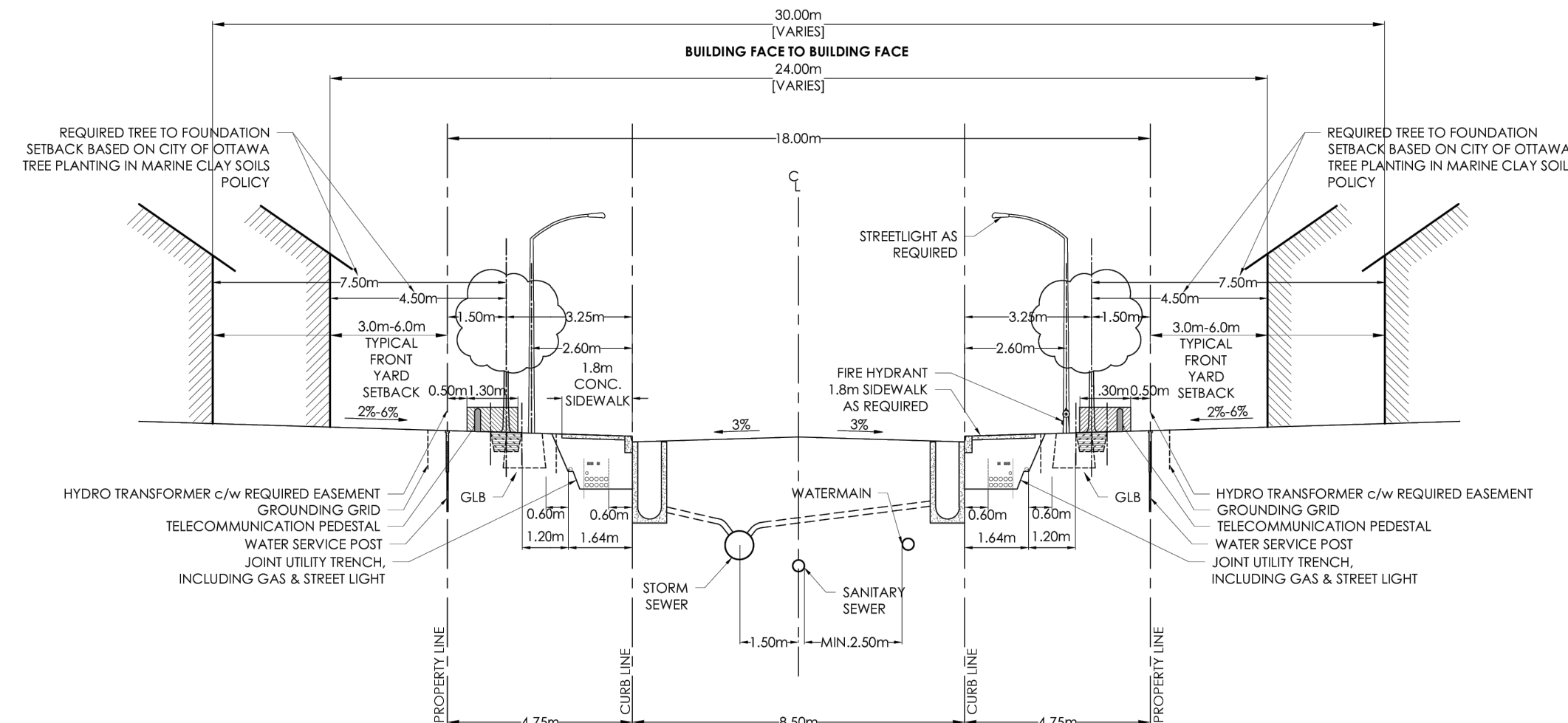


Legend

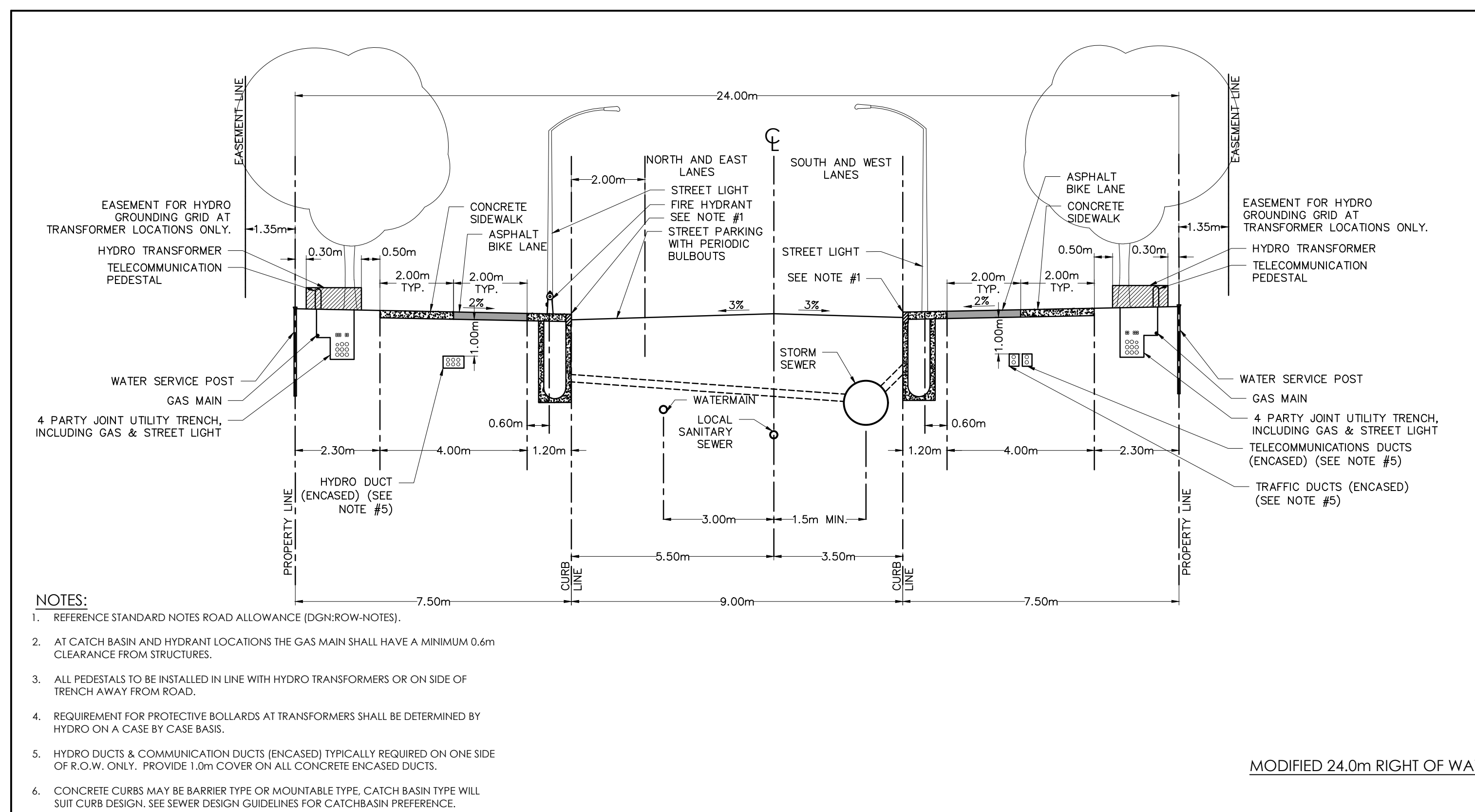
Notes

- STANDARD CROSS-SECTIONS TO BE READ IN CONJUNCTION WITH THE GENERAL STANDARD CROSS-SECTION NOTES AND OTHER APPLICABLE CITY AND UTILITY PLANS AND DETAILS.
- 18M RIGHT-OF-WAY NOT TO BE USED ON STREETS WITH BUS SERVICE.
- CONCRETE CURBS TO BE CONSTRUCTED AS PER CITY OF OTTAWA STANDARD DETAILS.
- TYPICAL FRONT YARD SETBACK IS TO BE CLEAR AND UNENCUMBERED OF ANY SUBSURFACE BUILDING ENCROACHMENTS.
- FIRE HYDRANTS TO BE LOCATED ON THE WATERMAIN SIDE OF THE STREET.
- CATCH BASINS TO BE PER CITY OF OTTAWA DETAIL S2.
- GAS MAIN SHALL HAVE A MINIMUM OF 0.6M CLEARANCE FROM STRUCTURES (E.G. CATCH BASINS AND HYDRANTS) AND 1.2 M FROM TREE ROOT BALL.
- STREETLIGHTS CAN BE LOCATED ON EITHER SIDE OF THE RIGHT-OF-WAY.
- JOINT-USE UTILITY TRENCH (JUT) UNDER SIDEWALK AS PER DETAIL UDS0049 HELD BY HYDRO OTTAWA.
- GRADE LEVEL BOX (GLB) AS DRAWN SHOWS GLB3660. EXACT LOCATION TO BE CONFIRMED.
- THIS CROSS-SECTION CANNOT BE USED WHERE A CONCRETE ENCASED HYDROELECTRIC DUCT OR ANOTHER SEPARATE UTILITY DUCT IS REQUIRED.
- TREE CLEARANCES TO HYDRO OTTAWA PLANT SHALL FOLLOW GC50036.
- CLEARANCES SHOWN ARE MINIMUMS.



18.0m ROW CROSS SECTION

REV. DATE: AUG. 2022
DWG. No. ROW-18.0



- NOTES:
- REFERENCE STANDARD NOTES ROAD ALLOWANCE (DGN:ROW-NOTES).
 - AT CATCH BASIN AND HYDRANT LOCATIONS THE GAS MAIN SHALL HAVE A MINIMUM 0.6m CLEARANCE FROM STRUCTURES.
 - ALL PEDESTALS TO BE INSTALLED IN LINE WITH HYDRO TRANSFORMERS OR ON SIDE OF TRENCH AWAY FROM ROAD.
 - REQUIREMENT FOR PROTECTIVE BOLLARDS AT TRANSFORMERS SHALL BE DETERMINED BY HYDRO ON A CASE BY CASE BASIS.
 - HYDRO DUCTS & COMMUNICATION DUCTS (ENCASED) TYPICALLY REQUIRED ON ONE SIDE OF R.O.W. ONLY. PROVIDE 1.0m COVER ON ALL CONCRETE ENCASED DUCTS.
 - CONCRETE CURBS MAY BE BARRIER TYPE OR MOUNTABLE TYPE. CATCH BASIN TYPE WILL SUIT CURB DESIGN. SEE SEWER DESIGN GUIDELINES FOR CATCH BASIN PREFERENCE.

MODIFIED 24.0m RIGHT OF WAY

Revision	By	Appd.	YY.MM.DD
3	WAJ	KJK	24.01.12
2	WAJ	KJK	23.01.16
1	WAJ	AMP	20.08.18

File Name:	WAJ	AMP	WAJ	20.06.11
160401347-DS.dwg	Dwn.	Chkd.	Dgn.	YY.MM.DD

Permit-Seal



Client/Project
3223701 CANADA INC.

BIGIL - KANATA NORTH

OTTAWA, ON

Title
CONCEPTUAL
DETAIL SHEET

Project No.	Scale	Sheet	Revision
160401347	1:1000	6 of 7	3

Drawing No. DS-1