

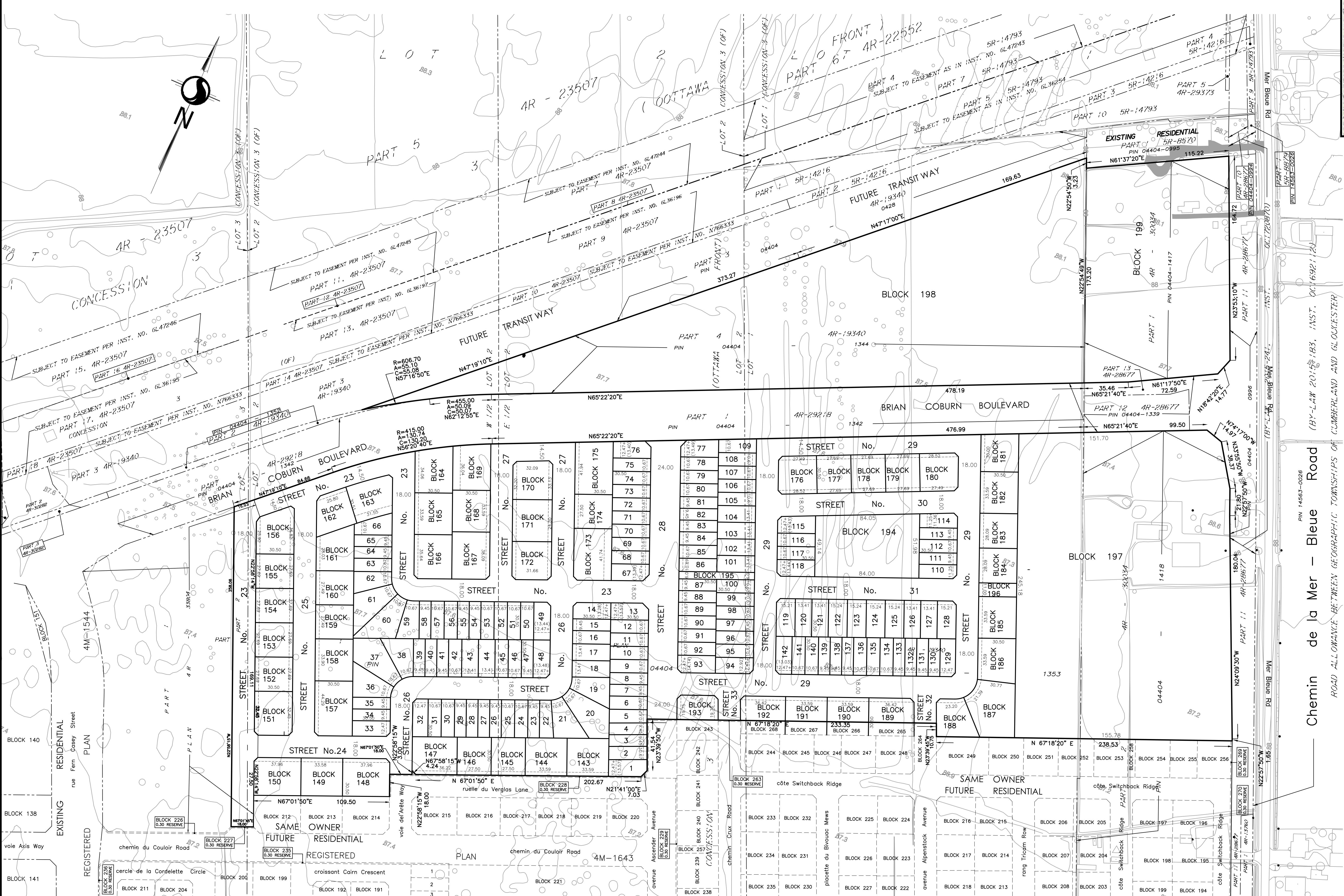
October 19, 2021

SUBJECT TO THE CONDITIONS, IF ANY, SET FORTH IN OUR LETTER DATED 20... THIS DRAFT PLAN IS APPROVED BY THE CITY OF OTTAWA UNDER SECTION 51 OF THE PLANNING ACT. THIS DAY OF ... 2017.



DRAFT PLAN OF SUBDIVISION PART OF LOTS 1, 2 AND 3 CONCESSION 3 (OTTAWA FRONT) (GEOGRAPHIC TOWNSHIP OF GLOUCESTER) CITY OF OTTAWA

Scale 1:1500 METRIC CONVERSION DISTANCES AND COORDINATES SHOWN ON THIS PLAN ARE IN METRES AND CAN BE CONVERTED TO FEET BY DIVIDING BY 0.3048



SCHEDULE OF LAND USE (South of Hydro) table with columns: LOT/BLOCK, TYPE, NUMBER OF UNITS, %, AREA (Ha/AC). Rows include various lot types like 'TOWNS (3X3 UNITS)', 'TOWNS (10X4 UNITS)', etc.

INFORMATION: REQUIRED UNDER SECTION 51 (17) OF THE PLANNING ACT R.S.O. 1990. List of items to be provided: a. SEE PLAN, b. SEE PLAN, c. SEE PLAN, etc.

SURVEYOR'S CERTIFICATE I HEREBY CERTIFY THAT THE BOUNDARIES OF THE SUBJECT LANDS AND THEIR RELATIONSHIP TO ADJOINING LANDS HAVE BEEN ACCURATELY AND CORRECTLY SHOWN.

DATE FRANCIS LAU ONTARIO LAND SURVEYOR

Stantec Geomatics Ltd. logo and contact information: CANADA LAND SURVEYORS, ONTARIO LAND SURVEYORS, 1331 CLYDE AVENUE, SUITE 400, OTTAWA, ONTARIO, K2C 3E4.

NOTE: THE PLAN DATA IS COMPILED FROM OFFICE RECORDS OF STANTEC GEOMATICS LTD. AND HAS NOT BEEN VERIFIED BY FIELD MEASUREMENTS. ALL DISTANCES ARE APPROXIMATE, TO BE VERIFIED BY FIELD REGISTERED PLAN(S).