

Archaeological
Services

Geotechnical
Engineering

Environmental
Engineering

Hydrogeology

Geological
Engineering

Materials Testing

Building Science

Paterson Group Inc.

Consulting Engineers
154 Colonnade Road South
Ottawa (Nepean), Ontario
Canada K2E 7J5

Tel: (613) 226-7381

Fax: (613) 226-6344

patersongroup

SUPPLEMENTARY DOCUMENTATION

Stage 2 Archaeological Assessment:

Trailsedge Phase 4 South
Part Lots 1, 2, & 3, Concession 3 OF,
Part 1 Plan 4R30034 PIN 04404-1417,
Part 4 Plan 4R19340 PIN 04404-1344,
Part 2 Plan 4R30034 PIN 04404-1418,
and Part 55 Plan 4R29086 PIN 04404-1353
Geographic Township of Gloucester
City of Ottawa, Ontario

Prepared For

Patrick Gaudreault
Richcraft Homes
201-2280 St. Laurent Blvd.
Ottawa, Ontario
K1G 4K1
Tel: 613-739-7111
pgaudreault@richcraft.com

January 2021

Submitted for review January 26, 2021

Licensee: Nadine Kopp (P378)

PIF: P378-0038-2020

Related Stage 1 PIF: P366-0040-2013

Report: PA1192-REP.01

Datum and Site Coordinates

GPS readings made with a Bad Elf Surveyor connected to ArcGIS Collector using the NAD 83 datum and UTM zone 18 projection with WAAS and DGPS enabled providing an average of 2.0 m horizontal and 3.0 m vertical accuracy.

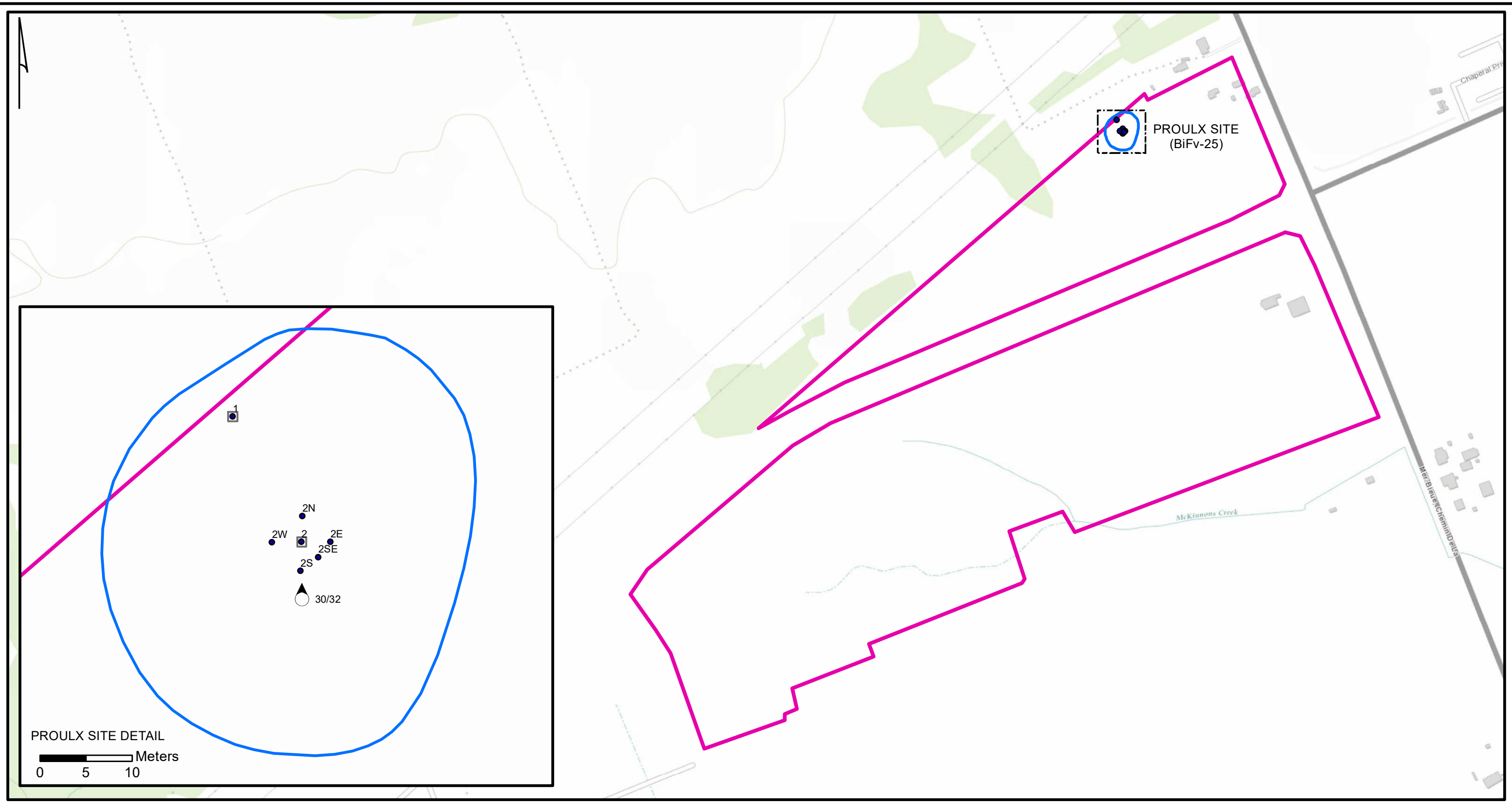
Conditions for GPS survey were clear with no to partial cloud cover on September 3, 2020 from 8 am to 4 pm.

Proulx Site (BiFv-25) Coordinates:

Point	X	Y
N	460785	5032655
E	460798	5032648
S	460798	5032633
W	460785	5032641
Centre*	460791	5032645

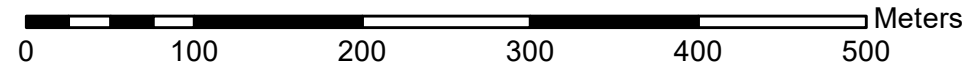
*Elevation 88 m

Maps

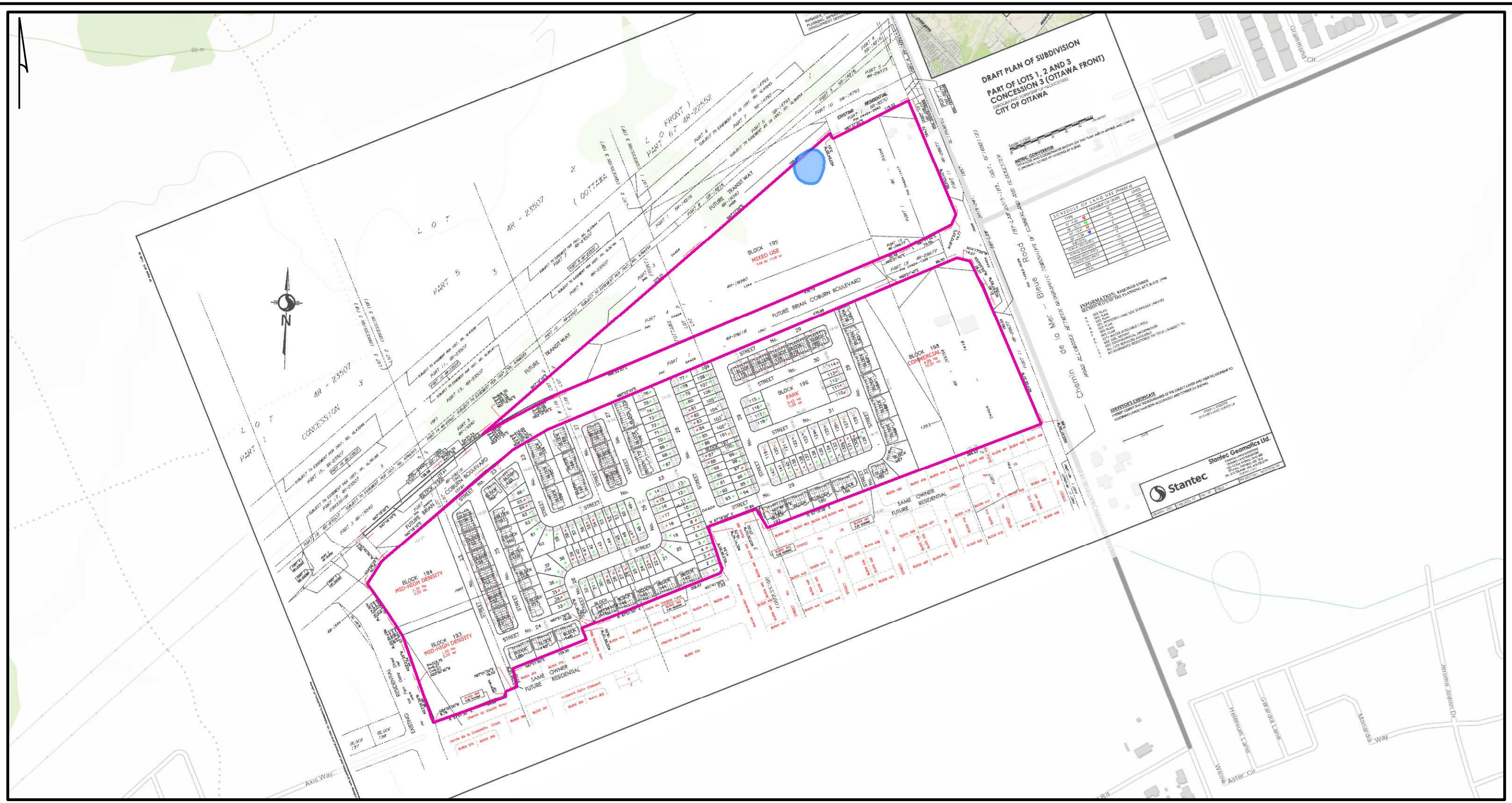


PROULX SITE DETAIL
 0 5 10 Meters

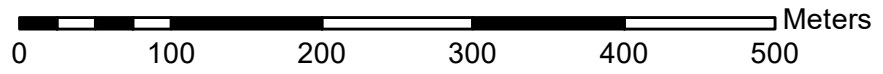
- STUDY AREA
- ARCHAEOLOGICAL SITE AREA
- STAGE 2 EXCAVATION UNIT
- PHOTO LOCATION AND DIRECTION (D#)
- STAGE 2 FINDSPOTS (WP#)



REFERENCES:
 COORDINATE SYSTEM: NAD 1983 UTM ZONE 18N
 SERVICE LAYER CREDITS: SOURCES: ESRI, HERE, GARMIN, INTERMAP, INCREMENT P CORP., GEBCO, USGS, FAO, NPS, NRCAN, GEOBASE, IGN, KADASTER NL, ORDNANCE SURVEY, ESRI JAPAN, METI, ESRI CHINA (HONG KONG), (C) OPENSTREETMAP CONTRIBUTORS, AND THE GIS USER COMMUNITY



- ARCHAEOLOGICAL SITE AREA
- STUDY AREA



REFERENCES:

COORDINATE SYSTEM: NAD 1983 UTM ZONE 18N
 SERVICE LAYER CREDITS: SOURCES: ESRI, HERE, GARMIN, INTERMAP, INCREMENT P CORP., GEBCO, USGS, FAO, NPS, NRCAN, GEOBASE, IGN, KADASTER NL, ORDNANCE SURVEY, ESRI JAPAN, METI, ESRI CHINA (HONG KONG), (C) OPENSTREETMAP CONTRIBUTORS, AND THE GIS USER COMMUNITY
 CONCEPT PLAN PROVIDED BY RICHCRAFT