

SUBJECT TO THE CONDITIONS, IF ANY, SET FORTH IN OUR LETTER DATED 2017.05.20
 THIS DRAFT PLAN IS APPROVED BY THE CITY OF OTTAWA UNDER SECTION 51 OF THE PLANNING ACT. THIS DAY OF 2017.

JEFF MCEWEN, P.ENG
 MANAGER, DEVELOPMENT REVIEW-EAST
 PLANNING, INFRASTRUCTURE AND ECONOMIC DEVELOPMENT DEPARTMENT, CITY OF OTTAWA



DRAFT PLAN OF SUBDIVISION
PART OF LOTS 1, 2 AND 3
CONCESSION 3 (OTTAWA FRONT)
 (GEOGRAPHIC TOWNSHIP OF GLOUCESTER)
 CITY OF OTTAWA

Scale 1:1,500
 0 20 40 60 80 100 METRES

METRIC CONVERSION
 DISTANCES AND COORDINATES SHOWN ON THIS PLAN ARE IN METRES AND CAN BE CONVERTED TO FEET BY DIVIDING BY 0.3048

SCHEDULE OF LAND USE (south of hydro)			
TYPE	NUMBER OF UNITS	UNITS	AREA (Ha/AC)
31'-9.45'	40	28%	
35'-10.67'	84	59%	5.13/12.678
44'-13.41'	14	10%	
50'-15.24'	4	3%	
SUB TOTAL	142	100%	
TOWNS (3X3 UNITS)	9		
TOWNS (10X4 UNITS)	40		
TOWNS (20X4 UNITS)	100		3.75/9.268
TOWNS (3X6 UNITS)	18		
B2B	116		1.29/3.195
STREETS			5.06/12.502
PARKS			0.43/1.049
WALKWAY			0.07/0.173
COMMERCIALS	1		4.25/10.51
MIXED-USE	1		7.04/17.390
TOTAL	427		27.02/66.745

INFORMATION: REQUIRED UNDER SECTION 51 (17) OF THE PLANNING ACT R.S.O. 1990

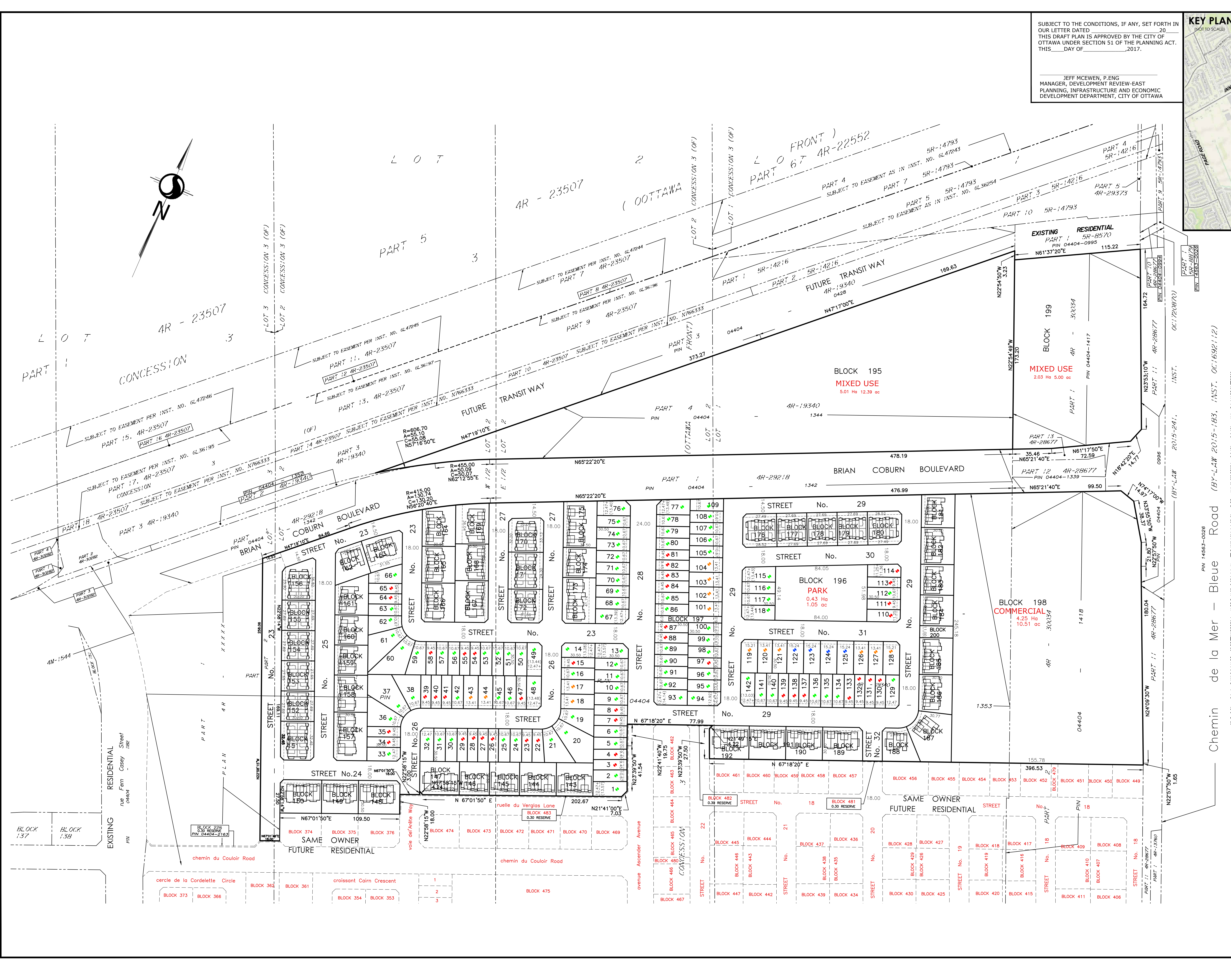
- SEE PLAN
- SEE PLAN
- SEE PLAN
- SEE PROPOSED LAND USE SCHEDULE (ABOVE)
- SEE PLAN
- SEE PLAN
- CITY WATER AVAILABLE \ WELL
- SEE SOIL REPORT
- SEE TOPOGRAPHICAL INFORMATION
- ALL CITY SERVICES AVAILABLE
- NO EASEMENTS REGISTERED ON TITLE \ SUBJECT TO

SURVEYOR'S CERTIFICATE
 I HEREBY CERTIFY THAT THE BOUNDARIES OF THE SUBJECT LANDS AND THEIR RELATIONSHIP TO ADJOINING LANDS HAVE BEEN ACCURATELY AND CORRECTLY SHOWN.

DATE _____
 BRIAN J. WEBSTER
 ONTARIO LAND SURVEYOR

Stantec Geomatics Ltd.
 CANADA LAND SURVEYORS
 ONTARIO LAND SURVEYORS
 1331 CLYDE AVENUE, SUITE 400
 OTTAWA, ONTARIO, K2C 3E4
 TEL: 613.722.4420 FAX: 613.722.2799
 stantec.com

DRAWN: CEC CHECKED: FP PM: FP FIELD: * PROJECT No: 161613796-131



ROAD ALLIANCE BETWEEN GEOGRAPHIC TOWNSHIPS OF LUMBERLAND AND GLOUCESTER
 Chemin de la Mer - Bleue Road (BY-LAW 2015-183, INST. OC1692112)
 PIN 14563-026