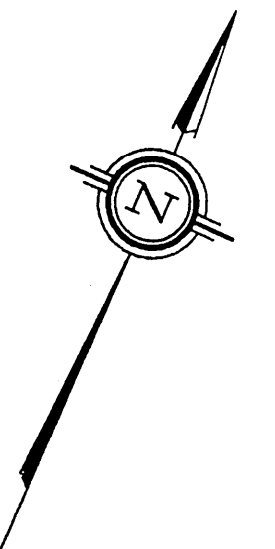


PART OF LOTS 1, 2 AND 3  
CONCESSION 3 (OTTAWA FRONT)  
GEOGRAPHIC TOWNSHIP OF GLOUCESTER  
CITY OF OTTAWA  
FORMERLY IN THE CITY OF GLOUCESTER  
STANTEC GEOMATICS LTD.  
2009

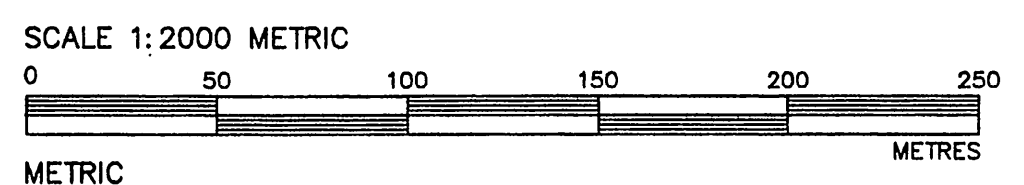


INNES ROAD  
(FORMERLY REGIONAL ROAD NO. 30)  
ROAD ALLOWANCE BETWEEN CONCESSIONS 2 AND 3 (OTTAWA FRONT)

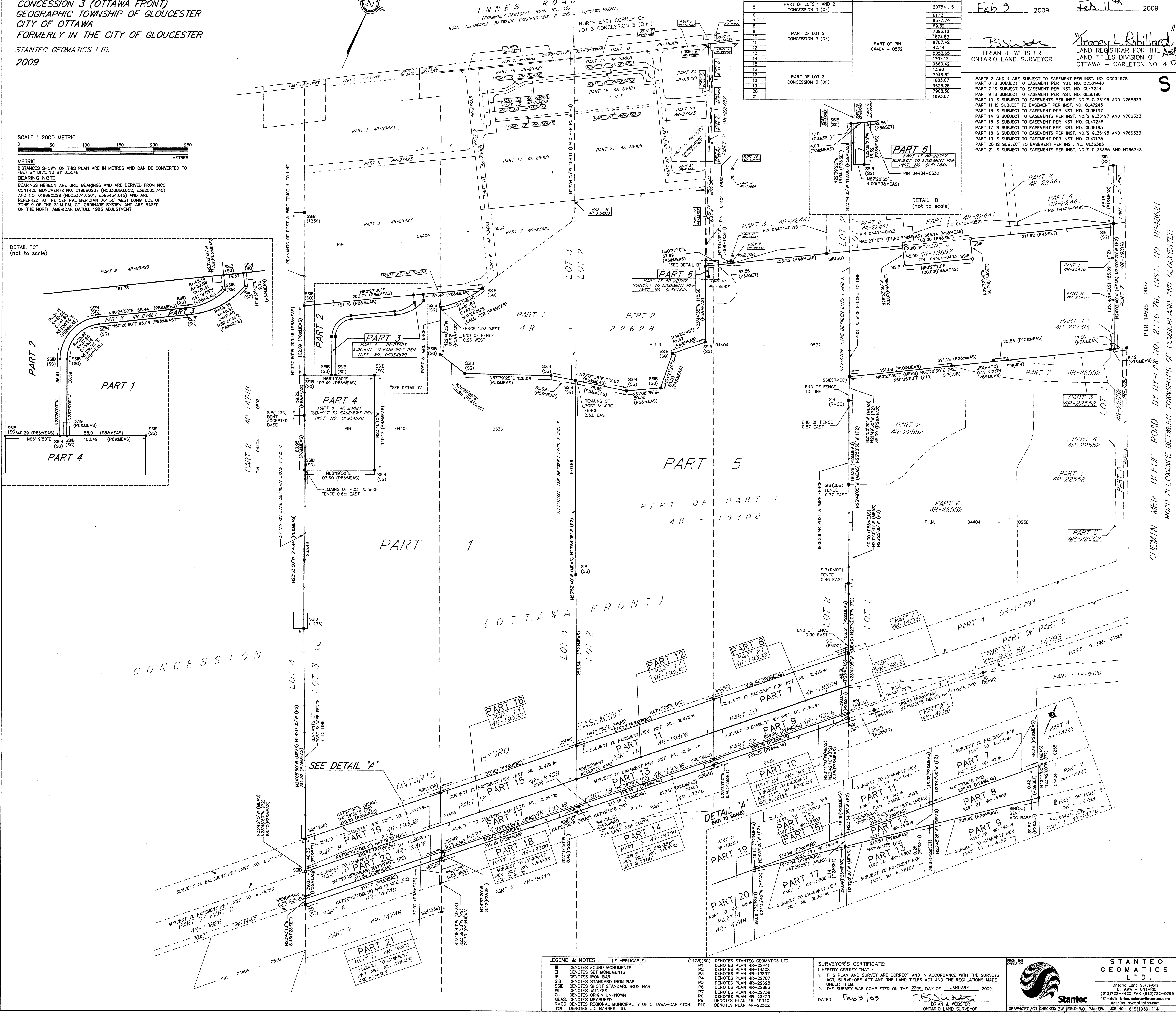
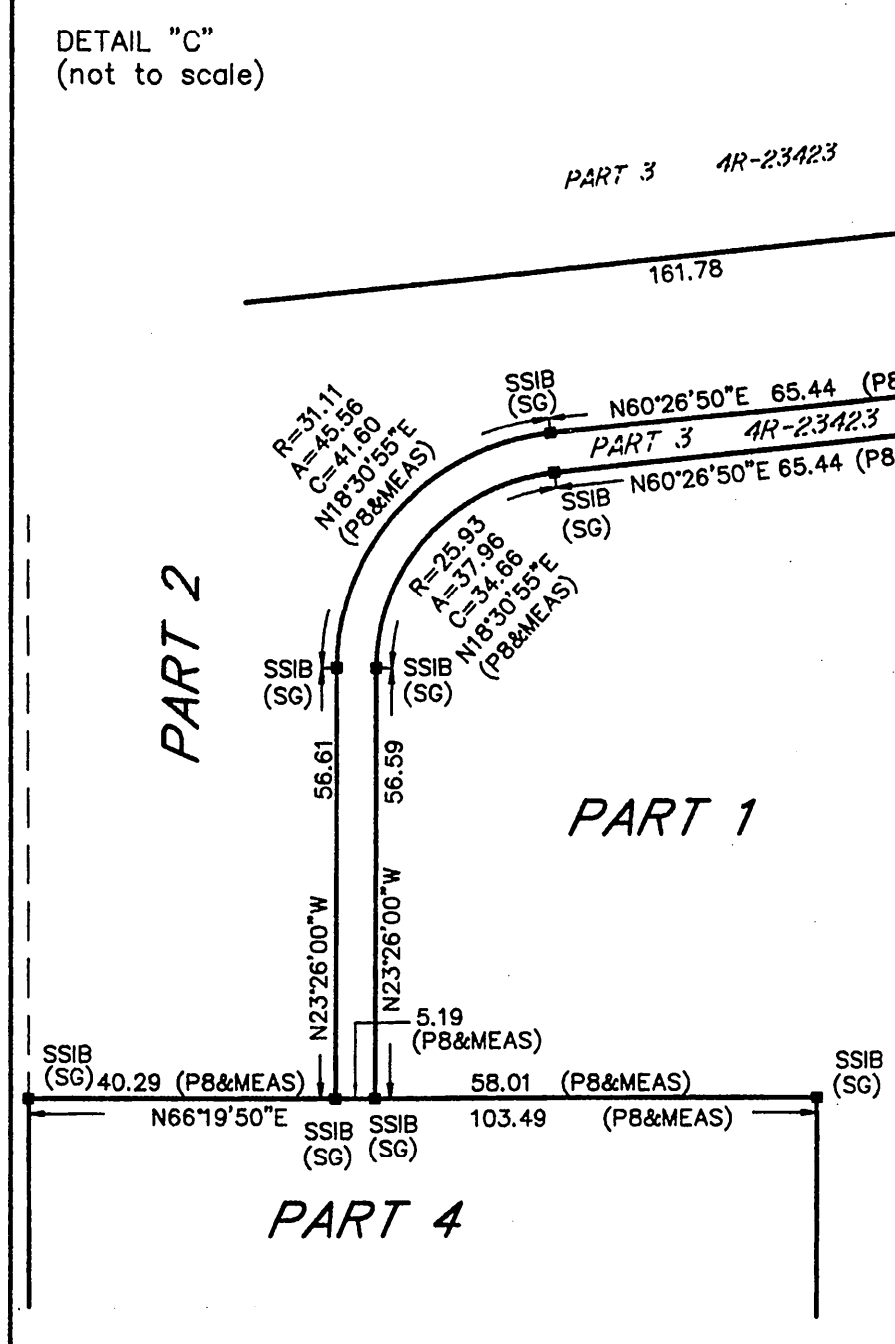
SCHEDULE			
PART	DESCRIPTION	PIN	AREA (m <sup>2</sup> )
1	PART OF LOT 3 CONCESSION 3 (OF)	04404 - 0535	24775.84
2	PART OF LOT 3 CONCESSION 3 (OF)	04404 - 0535	6924.33
3	PART OF LOT 3 CONCESSION 3 (OF)	04404 - 0535	1271.06
4	PART OF LOTS 1 AND 2 CONCESSION 3 (OF)		14507.62
5	PART OF LOTS 1 AND 2 CONCESSION 3 (OF)		29784.16
6	PART OF LOT 2 CONCESSION 3 (OF)		61.13
7	PART OF LOT 2 CONCESSION 3 (OF)		9577.74
8	PART OF LOT 2 CONCESSION 3 (OF)		69.32
9	PART OF LOT 2 CONCESSION 3 (OF)		7896.18
10	PART OF LOT 2 CONCESSION 3 (OF)		1674.53
11	PART OF LOT 2 CONCESSION 3 (OF)		9767.42
12	PART OF LOT 2 CONCESSION 3 (OF)		42.44
13	PART OF LOT 2 CONCESSION 3 (OF)		8053.65
14	PART OF LOT 2 CONCESSION 3 (OF)		1707.12
15	PART OF LOT 2 CONCESSION 3 (OF)		9560.42
16	PART OF LOT 2 CONCESSION 3 (OF)		13.98
17	PART OF LOT 2 CONCESSION 3 (OF)		7946.82
18	PART OF LOT 2 CONCESSION 3 (OF)		1683.07
19	PART OF LOT 2 CONCESSION 3 (OF)		9228.25
20	PART OF LOT 2 CONCESSION 3 (OF)		7968.58
21	PART OF LOT 2 CONCESSION 3 (OF)		1693.87

I REQUIRE THIS PLAN TO BE DEPOSITED UNDER THE LAND TITLES ACT.  
Feb 9 2009  
BRIAN J. WEBSTER  
ONTARIO LAND SURVEYOR

PLAN 4R-23507  
RECEIVED AND DEPOSITED  
Feb 11 2009  
Tracey L. Robillard  
LAND REGISTRAR FOR THE EAST  
LAND TITLES DIVISION OF OTTAWA - CARLETON NO. 4



METRIC  
DISTANCES SHOWN ON THIS PLAN ARE IN METRES AND CAN BE CONVERTED TO FEET BY DIVIDING BY 0.3048  
BEARING NOTE  
BEARINGS HEREON ARE GRID BEARINGS AND ARE DERIVED FROM NCC CONTROL MONUMENTS NO. 019680227 (N5032860.652, E382005.745) AND NO. 019680228 (N5033747.561, E383454.015) AND ARE REFERRED TO THE CENTRAL MERIDIAN 76° 30' WEST LONGITUDE OF ZONE 18 OF THE 3 M.T.M. CO-ORDINATE SYSTEM AND ARE BASED ON THE NORTH AMERICAN DATUM, 1983 ADJUSTMENT.



LEGEND & NOTES : (IF APPLICABLE)  
■ DENOTES FOUND MONUMENTS  
□ DENOTES SET MONUMENTS  
○ DENOTES IRON BAR  
SIB DENOTES STANDARD IRON BAR  
WT DENOTES SHORT STANDARD IRON BAR  
WT DENOTES WITNESS  
OU DENOTES ORIGIN UNKNOWN  
MAS DENOTES MEASURED  
RMCC DENOTES REGIONAL MUNICIPALITY OF OTTAWA-CARLETON  
JOB DENOTES J.D. BARNES LTD.  
(1473)(S) DENOTES STANTEC GEOMATICS LTD.  
P1 DENOTES PLAN AR-22441  
P2 DENOTES PLAN AR-19308  
P3 DENOTES PLAN AR-19897  
P4 DENOTES PLAN AR-22787  
P5 DENOTES PLAN AR-22828  
P6 DENOTES PLAN AR-22886  
P7 DENOTES PLAN AR-22738  
P8 DENOTES PLAN AR-23463  
P9 DENOTES PLAN AR-19340  
P10 DENOTES PLAN AR-22552

SURVEYOR'S CERTIFICATE:  
I HEREBY CERTIFY THAT:  
1. THIS PLAN AND SURVEY ARE CORRECT AND IN ACCORDANCE WITH THE SURVEYS ACT, SURVEYORS ACT AND THE LAND TITLES ACT AND THE REGULATIONS MADE UNDER THEM.  
2. THE SURVEY WAS COMPLETED ON THE 22nd DAY OF JANUARY 2009.  
DATED: Feb 9 2009  
BRIAN J. WEBSTER  
ONTARIO LAND SURVEYOR

STANTEC GEOMATICS LTD.  
Ontario Land Surveyors  
OTTAWA - ONTARIO  
(613)722-4420 FAX (613)722-0769  
"E" Mail: brian.webster@stantec.com  
Website: www.stantec.com

Stantec  
DRAWN/CEC/TX CHECKED: BW FIELD: WD P.M.: BW JOB NO: 16161959-114  
DRAWING: 16161959-114-Sherman\_Innes Rd/Reference\_Plan/ddd.dwg

CHEMIN MER BLEUE ROAD BY BY-LAW NO. 2116-76, INST. NO. RR48621  
P.L.N. 14525 - 0052