

Archaeological
Services

Geotechnical
Engineering

Environmental
Engineering

Hydrogeology

Geological
Engineering

Materials Testing

Building Science

patersongroup

SUPPLEMENTARY DOCUMENTATION

Stage 2 Archaeological Assessment:

Trailsedge Phase 5 North
Part Lots 1, 2, 3, & 4, Concession 3 OF,
Part 2 Plan 5R8348 PIN 04404-1472,
Part 1 Plan 4R29569 PIN 04404-0503,
Part 1 Plan 4R23507 PIN 04404-0541,
Part 5 Plan 4R-23507 PIN 04404-0539,
Part 2 Plan 4r-22552 PIN 04404-0543,
and Part 1 Plan 4R22552 PIN 04404-0542
Geographic Township of Gloucester
City of Ottawa, Ontario

Prepared For

Patrick Gaudreault
Richcraft Homes
201-2280 St. Laurent Blvd.
Ottawa, Ontario
K1G 4K1
Tel: 613-739-7111
pgaudreault@richcraft.com

January 2021

Submitted for review January 26, 2021

Paterson Group Inc.

Consulting Engineers
154 Colonnade Road South
Ottawa (Nepean), Ontario
Canada K2E 7J5

Tel: (613) 226-7381

Fax: (613) 226-6344

Licensee: Nadine Kopp (P378)

PIF: P378-0037-2020

Related Stage 1 PIF: P366-0040-2013

Report: PA1191-REP.01

Datum and Site Coordinates

GPS readings made with a Bad Elf Surveyor connected to ArcGIS Collector using the NAD 83 datum and UTM zone 18 projection with WAAS and DGPS enabled providing an average of 2.0 m horizontal and 3.0 m vertical accuracy.

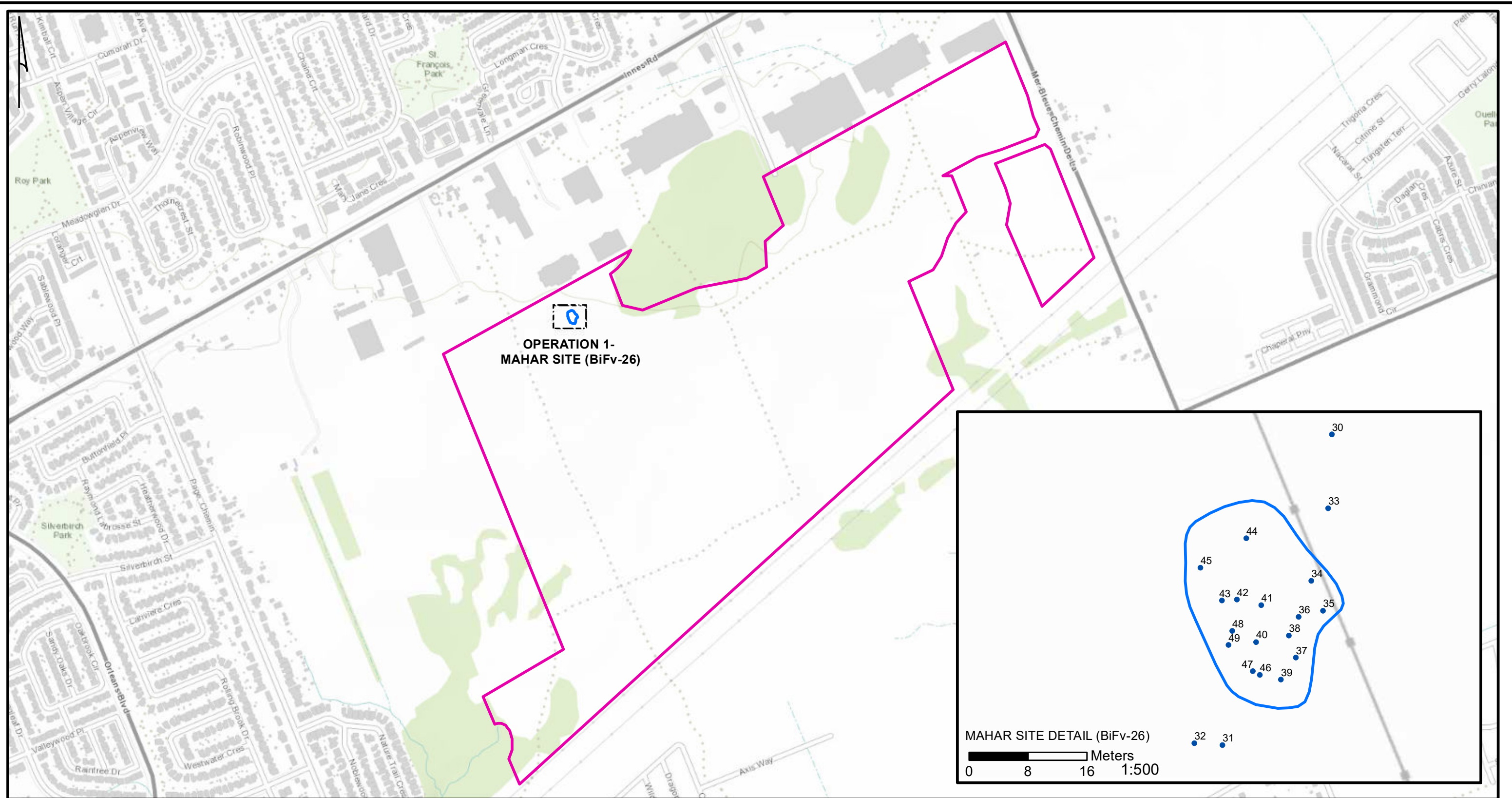
Conditions for GPS survey were clear with no to partial cloud cover on August 31, 2020 from 8 am to 4 pm.

Mahar Site (BiFv-26) Coordinates:

Point	X	Y
N	459704.9	5032798.6
E	459725.5	5032770.0
S	459707.0	5032735.6
W	459675.3	5032768.4
Centre*	459704.4	5032765.7

Elevation 89 m

Maps



- MAHAR SITE AREA
- STUDY AREA
- STAGE 2 PEDESTRIAN SURVEY FIND SPOT WITH WAYPOINT #

REFERENCES:

COORDINATE SYSTEM: NAD 1983 UTM ZONE 18N
 SERVICE LAYER CREDITS: SOURCES: ESRI, HERE, GARMIN, INTERMAP, INCREMENT P CORP., GEBCO, USGS, FAO, NPS, NRCAN, GEOBASE, IGN, KADASTER NL, ORDNANCE SURVEY, ESRI JAPAN, METI, ESRI CHINA (HONG KONG), (C) OPENSTREETMAP CONTRIBUTORS, AND THE GIS USER COMMUNITY

