

Archaeological
Services

Geotechnical
Engineering

Environmental
Engineering

Hydrogeology

Geological
Engineering

Materials Testing

Building Science

patersongroup

SUPPLEMENTARY DOCUMENTATION

Stage 3 Archaeological Assessment:

Mahar Site (BiFv-26),
Trailsedge Phase 5 North
Part Lots 1, 2, 3, & 4, Concession 3 OF,
Part 2 Plan 5R8348 PIN 04404-1472,
Part 1 Plan 4R29569 PIN 04404-0503,
Part 1 Plan 4R23507 PIN 04404-0541,
Part 5 Plan 4R-23507 PIN 04404-0539,
Part 2 Plan 4r-22552 PIN 04404-0543,
and Part 1 Plan 4R22552 PIN 04404-0542
Geographic Township of Gloucester
City of Ottawa, Ontario

Prepared For

Patrick Gaudreault
Richcraft Homes
201-2280 St. Laurent Blvd.
Ottawa, Ontario
K1G 4K1
Tel: 613-739-7111
pgaudreault@richcraft.com

January 2021

Submitted for review January 26, 2021

Paterson Group Inc.

Consulting Engineers
154 Colonnade Road South
Ottawa (Nepean), Ontario
Canada K2E 7J5

Tel: (613) 226-7381
Fax: (613) 226-6344

Related PIFs:

Stage 1: P366-0040-2013
Stage 2: P378-0037-2020
Licensee: Nadine Kopp (P378)

Report: PA1207-REP.01

Datum and Site Coordinates

GPS readings made with a Bad Elf Surveyor connected to ArcGIS Collector using the NAD 83 datum and UTM zone 18 projection with WAAS and DGPS enabled providing an average of 2.0 m horizontal and 3.0 m vertical accuracy.

Conditions for GPS survey were clear with no to partial cloud cover on November 6, 2020 from 8 am to 4 pm.

Mahar Site (BiFv-26) Coordinates:

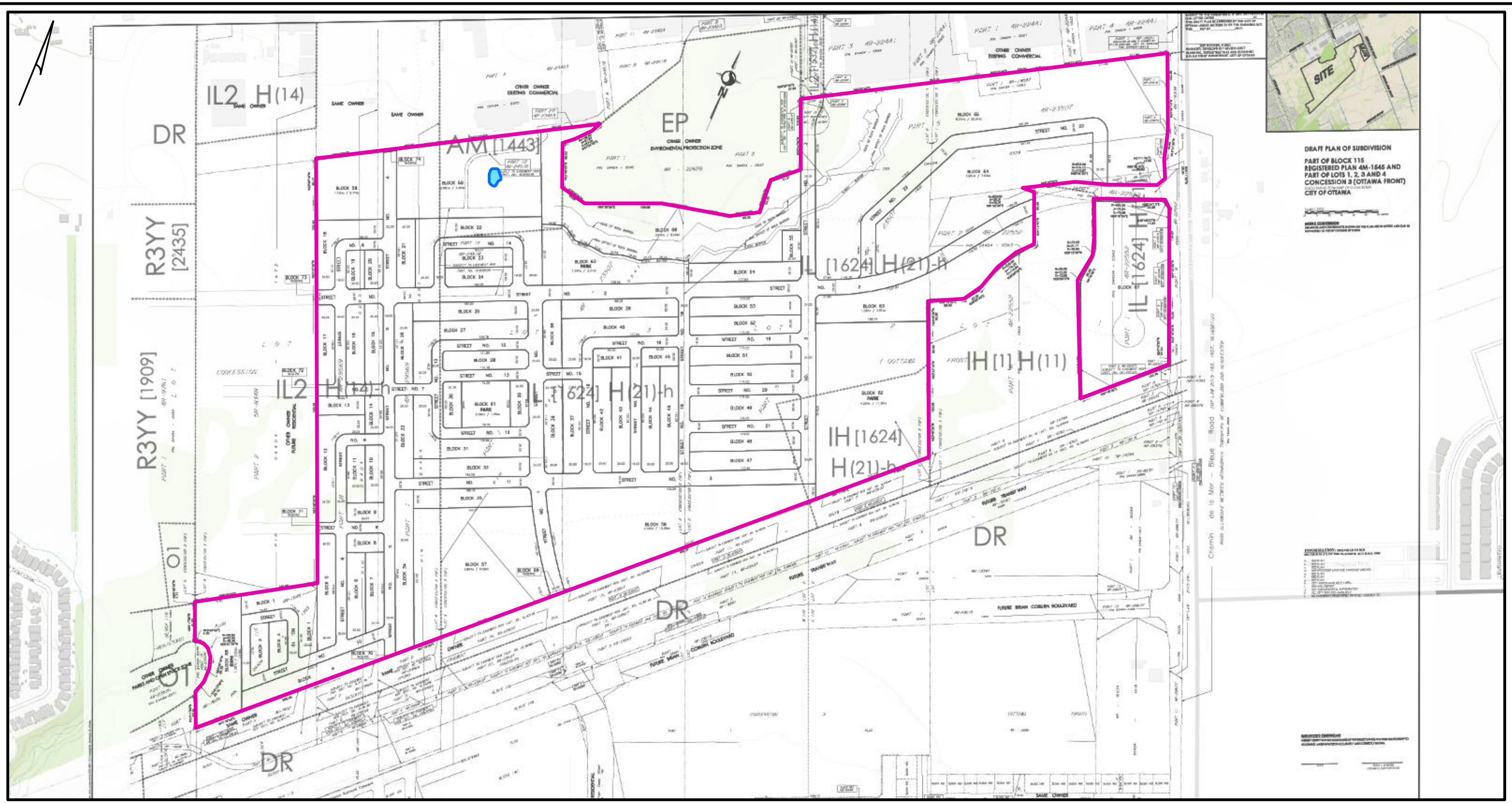
Point	X	Y
N	459699	50327986
E	459716	5032776
S	459711	5032759
W	459689	5032768
Centre*	459706	5032773

Elevation 88 m asl

In site at 100E 300N (datum 2) 18T 459706 5032775 UTM


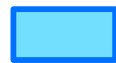
Off site at 125E 300N (datum 1) 18T 459728 5032787 UTM

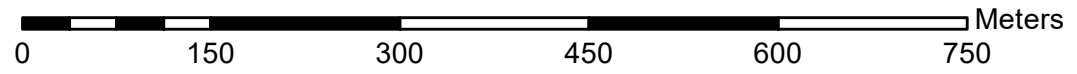
Maps



DRAFT PLAN OF SUBDIVISION
 PART OF BLOCK 115
 REGISTERED PLAN 4M-1545 AND
 PART OF LOTS 1, 2, 3 AND 4
 CONCESSION 3 (OTTAWA FRONT)
 CITY OF OTTAWA

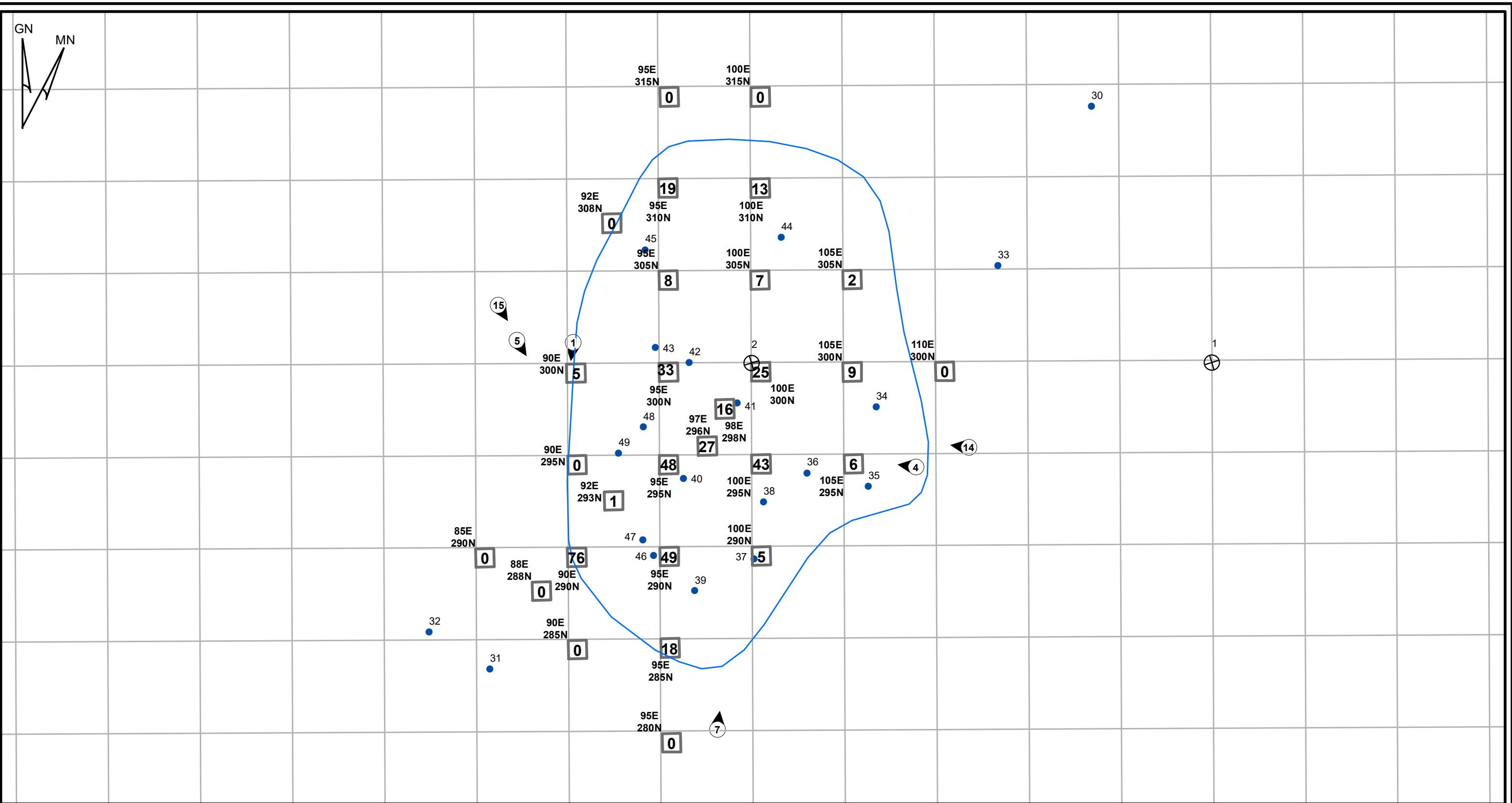
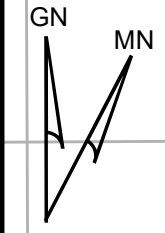
PROPERTY FROM REGISTERED PLAN
 4M-1545 (PART OF BLOCK 115 AND
 PART OF LOTS 1, 2, 3 AND 4
 CONCESSION 3 (OTTAWA FRONT))
 4M-1545 (PART OF BLOCK 115 AND
 PART OF LOTS 1, 2, 3 AND 4
 CONCESSION 3 (OTTAWA FRONT))
 4M-1545 (PART OF BLOCK 115 AND
 PART OF LOTS 1, 2, 3 AND 4
 CONCESSION 3 (OTTAWA FRONT))
 4M-1545 (PART OF BLOCK 115 AND
 PART OF LOTS 1, 2, 3 AND 4
 CONCESSION 3 (OTTAWA FRONT))

 STUDY AREA
 MAHAR SITE AREA

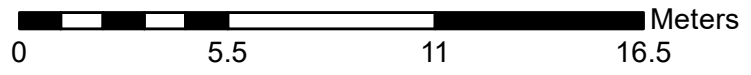


REFERENCES:

COORDINATE SYSTEM: NAD 1983 UTM ZONE 18N
 SERVICE LAYER CREDITS: SOURCES: ESRI, HERE, GARMIN, INTERMAP, INCREMENT P CORP.,
 GEBCO, USGS, FAO, NPS, NRCAN, GEOBASE, IGN, KADASTER NL, ORDANCE SURVEY, ESRI
 JAPAN, METI, ESRI CHINA (HONG KONG), (C) OPENSTREETMAP CONTRIBUTORS, AND THE GIS
 USER COMMUNITY
 CONCEPT PLAN PROVIDED BY RICHCRAFT



- MAHAR SITE AREA (FROM STAGE 2)
- STAGE 3 1 x 1m UNIT WITH ARTIFACT TALLY
- STAGE 2 FIND SPOT
- PHOTO LOCATION, DIRECTION, AND CATALOGUE NUMBER
- SITE DATUM STAKE



REFERENCES:
 COORDINATE SYSTEM: NAD 1983 UTM ZONE 18N