

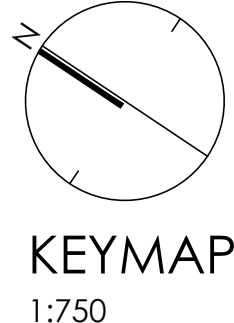
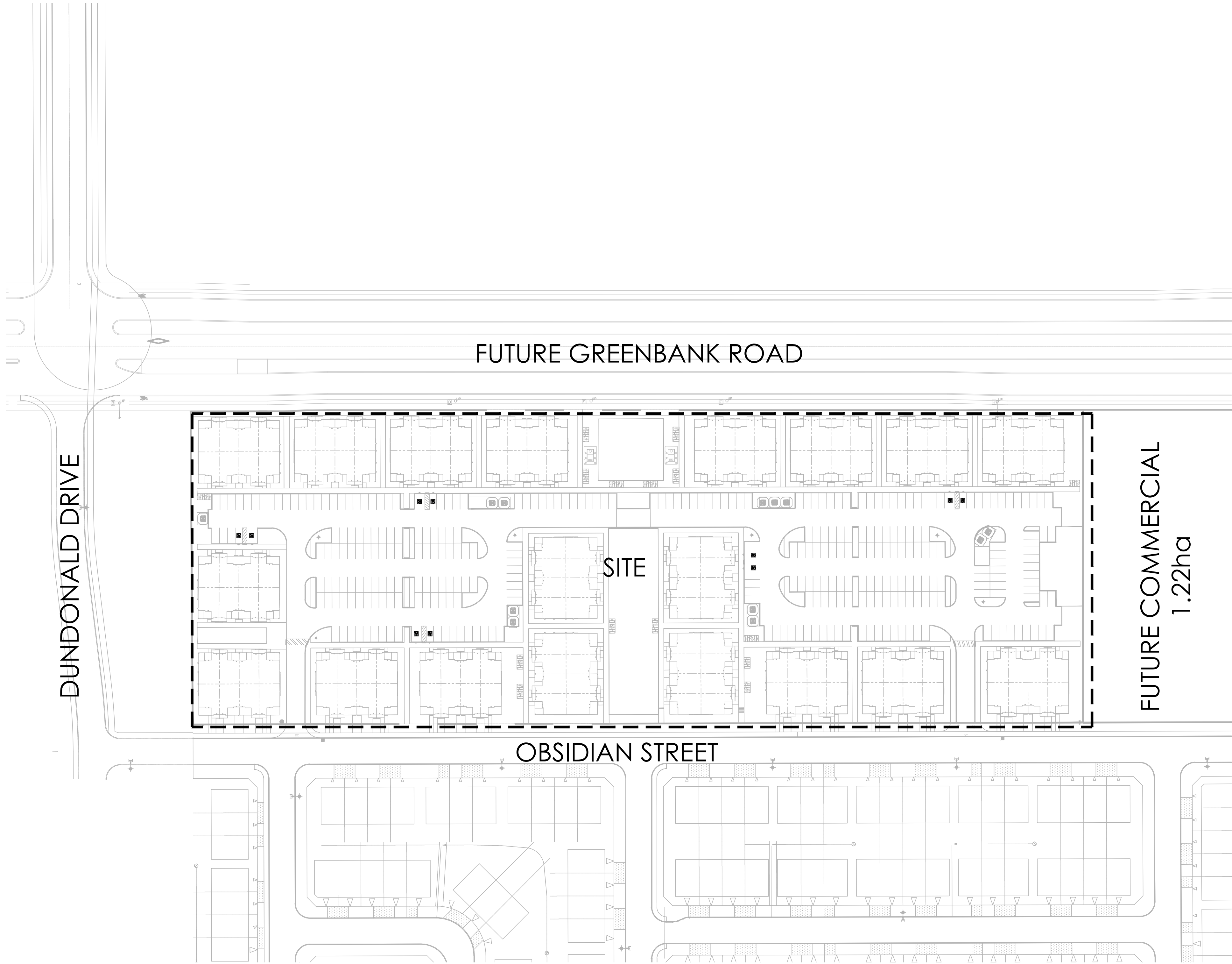


HALF MOON BAY SOUTH PHASE 8

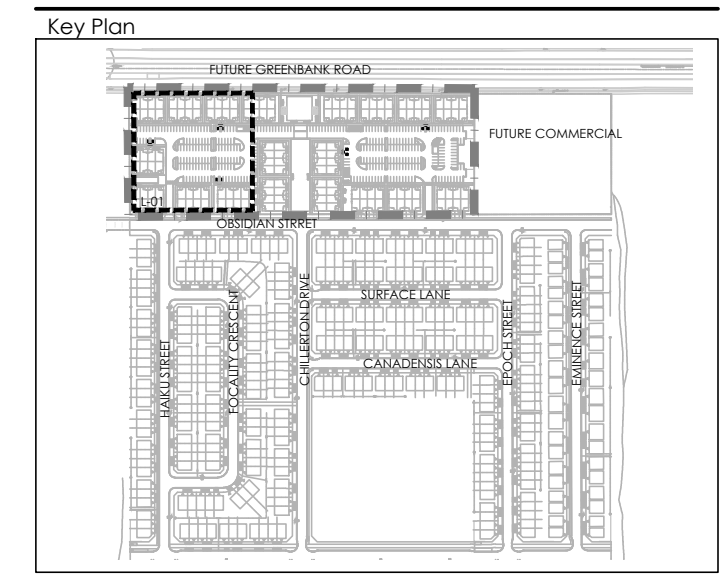


LIST OF DRAWINGS:

- L-01 - LANDSCAPE PLAN
- L-02 - LANDSCAPE PLAN
- L-03 - LANDSCAPE PLAN
- D-01 - DETAILS



Contractor shall check all dimensions on the work and report any discrepancy to the Landscape Architect before proceeding. All drawings and specifications are the property of the Landscape Architect and must be returned at the completion of the work. This drawing is not to be used for construction until signed by the Landscape Architect.



LEGEND

--- PROPERTY LINE

FENCING

--- WASTE ENCLOSURE FENCE

--- PEDESTRIAN ACCESS GATE

PLANTING

○ LARGE DECIDUOUS TREE

○ DECIDUOUS SHRUB

○ CONIFEROUS SHRUB

○ GRASSES/PERENNIALS

■ SODDING

PAVING

■ ASPHALT PAVING

■ CIP CONCRETE PAVING

■ HEAVY DUTY CONCRETE PAVING

■ RIVERSTONE PAVING

■ UNIT PAVING

PLANTING KEY

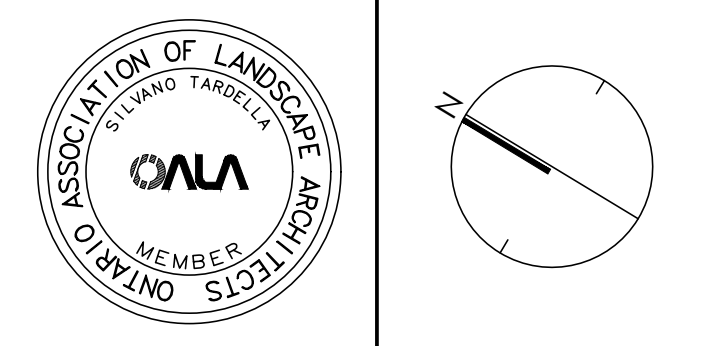
XX/00 TREE SPECIES QUANTITY

XX/00 SHRUB SPECIES QUANTITY

DETAIL KEY

D/1 DETAIL NO. SHEET NO.

No.	Description	Date
2	Re-issued for First Submission	FEB 2022
1	Issued for First Submission	NOV 2021



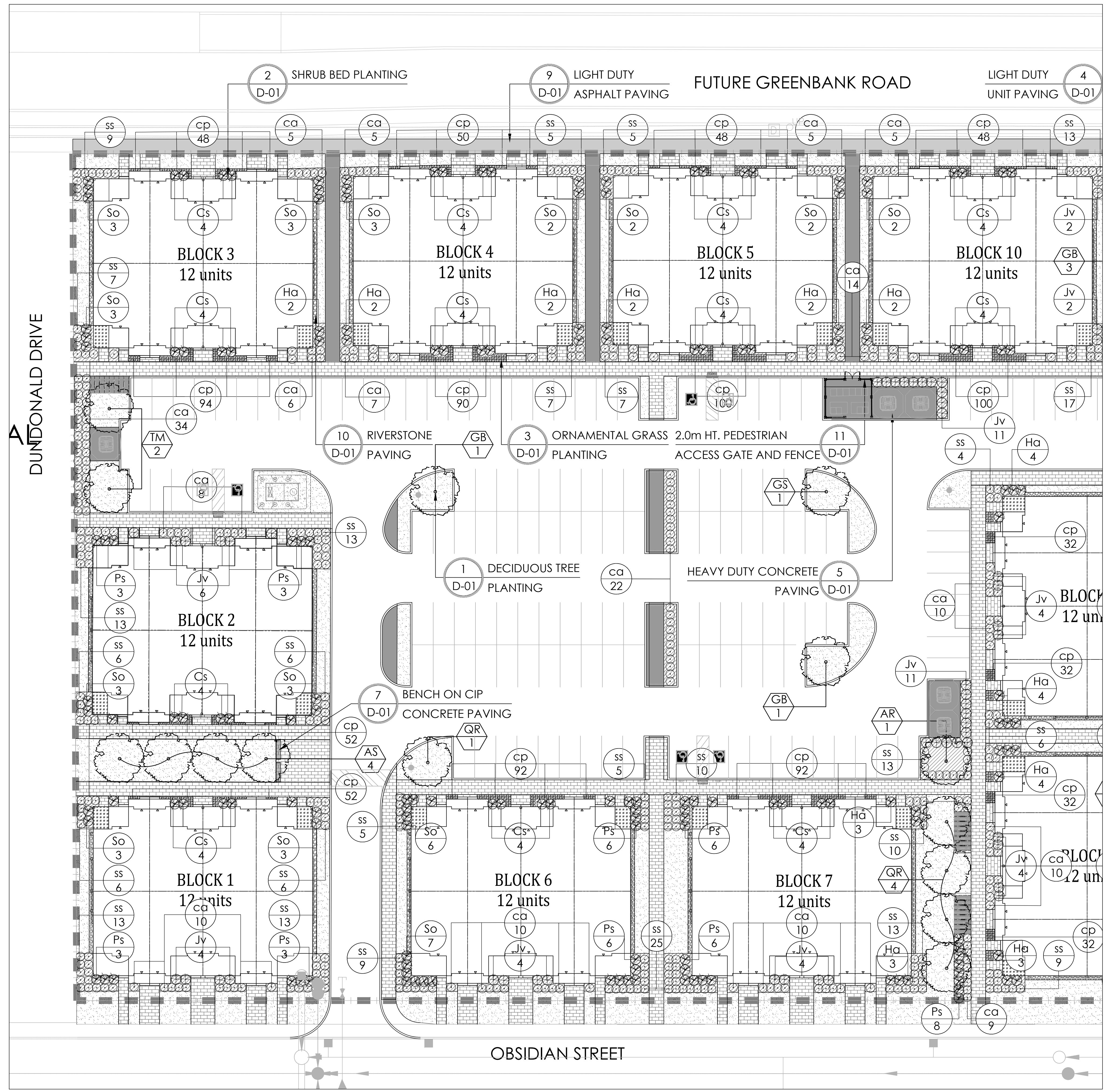
NAK design strategies

1285 WELLINGTON STREET WEST, OTTAWA, ON K1Y 3A8 CANADA
 T 613.237.2345 F 613.237.6423 NAKDESIGNSTRATEGIES.COM

HALF MOON BAY SOUTH PHASE 8

Title: **LANDSCAPE PLAN**

Date: DEC 2021 Sheet: **L-01**
 Scale: 1:250
 Drawn: TY
 Checked: TM
 Job No.: 20-210



- GENERAL NOTES:**
- ACER RUBRUM, CELTIS OCCIDENTALIS, AND QUERCUS RUBRA TO BE SPRING DUG SPECIMENS AND PLANTED IN THE SPRING ONLY.
 - THE LOCATION OF THE TREES SHOWN ON THIS PLAN IS APPROXIMATE AND SHALL NOT BE SCALED FROM THIS DRAWING. THIS PLAN MUST BE READ IN CONJUNCTION WITH THE APPROVED CUP AND CITY CROSS SECTIONS.
 - CONTRACTOR SHALL ENSURE THAT ALL UTILITY LOCATIONS ARE OBTAINED PRIOR TO ANY EXCAVATION FOR LANDSCAPING.
 - LOCATION OF ALL PLANT MATERIALS TO BE STAKED BY THE CONTRACTOR AND VERIFIED IN THE FIELD BY LANDSCAPE ARCHITECT & CITY OF OTTAWA PRIOR TO THE EXCAVATION OF PITS.
 - ALL PLANT MATERIAL SHALL BE NURSERY GROWN STOCK UNLESS OTHERWISE NOTED.
 - TREES TO HAVE A MINIMUM 1800 CLEAR STEM ABOVE GRADE.
 - PLACE SOD ON A MINIMUM 150mm TOPSOIL.
 - CONTRACTOR TO MAKE GOOD ALL EXISTING AREAS DAMAGED BY HIS WORK TO THE SATISFACTION OF THE CITY OF OTTAWA.
 - THE CITY WILL BE NOTIFIED IF ANY TREES CANNOT BE LOCATED OR PLANTED DUE TO CONFLICTS WITH UTILITIES OR DRIVEWAYS. THE REQUIRED TREES NOT PLANTED ARE SUBJECT TO TREE BANKING. THE FINAL NUMBER OF TREES TO BE BANKED WILL BE PROVIDED TO THE CITY FOLLOWING ALL PLANTINGS.
 - ALL PLANT MATERIAL SHALL BE WARRANTED FOR TWO YEARS FROM THE DATE OF PERFORMANCE ACCEPTANCE AS DETERMINED BY THE CITY OF OTTAWA.
 - PERIODIC REVIEWS OF PLANTING SHALL BE CARRIED OUT BY THE LANDSCAPE ARCHITECT.
 - PLANTINGS TO BE STAKED FOR APPROVAL PRIOR TO CONSTRUCTION

- PLANTING NOTES:**
- CONTRACTOR TO VERIFY LOCATION OF ALL SERVICES PRIOR TO ANY EXCAVATION.
 - LOCATIONS OF ALL PLANT MATERIALS TO BE STAKED BY THE CONTRACTOR AND VERIFIED IN THE FIELD BY LANDSCAPE ARCHITECT PRIOR TO THE EXCAVATION OF PITS.
 - ALL PLANT MATERIAL SHALL BE NURSERY GROWN STOCK UNLESS OTHERWISE NOTED.
 - DECIDUOUS TREES TO HAVE A MINIMUM 1800 CLEAR STEM ABOVE GRADE.
 - ALL PLANT MATERIAL SHALL BE WARRANTED FOR TWO YEARS FROM THE DATE OF PERFORMANCE ACCEPTANCE AS DETERMINED BY THE LANDSCAPE ARCHITECT.
 - ALL STEEL T-BARS TO BE REMOVED AT THE ONE YEAR INTERIM INSPECTION UNLESS OTHERWISE DIRECTED BY THE LANDSCAPE ARCHITECT.
 - CONTRACTOR TO MAKE GOOD ALL EXISTING AREAS DAMAGED BY HIS WORK TO THE SATISFACTION OF THE LANDSCAPE ARCHITECT.
 - PERIODIC REVIEWS OF PLANTING SHALL BE CARRIED OUT BY THE LANDSCAPE ARCHITECT.
 - ANY PROPOSED SUBSTITUTIONS OF PLANT SPECIES SHALL BE MADE WITH PLANTS OF EQUIVALENT OVERALL FORM, HEIGHT, BRANCHING HABIT, FLOWER, LEAF, COLOR, FRUIT AND CULTURE AND ONLY AFTER APPROVAL OF THE LANDSCAPE ARCHITECT.

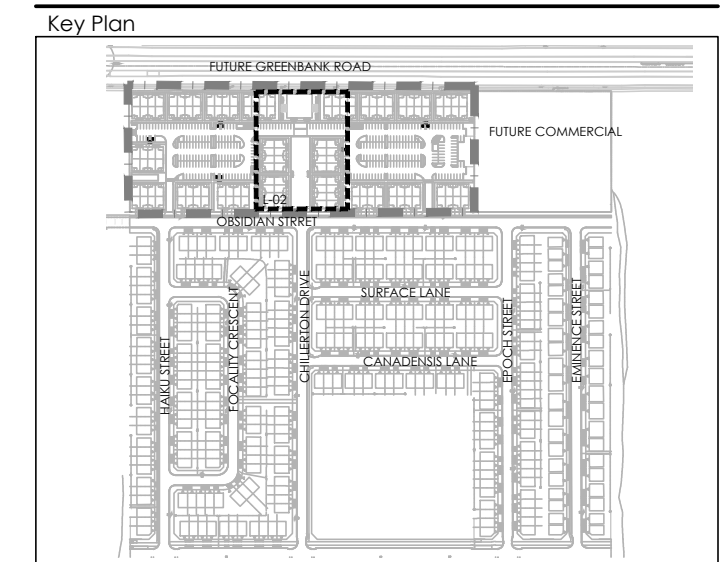
- SHRUB NOTES:**
- PLACE THE SHRUB AS UPRIGHT AS POSSIBLE, INCLUDING ON SLOPES.
 - PLANT SHRUBS AT THE PROPER DEPTH AS INDICATED ON THE DRAWINGS.
 - PACK THE SOIL WELL AROUND THE PLANT BASE TO REMOVE AIR POCKETS, BUT DO NOT COMPACT SOIL. PRESS SOIL GENTLY BUT FIRMLY TO PREVENT SHOCKING THE ROOTS.
 - PLACE SPECIES ACCORDING TO THE QUANTITIES AND SPACING AS INDICATED ON THE DRAWINGS.
 - PLANT SHRUBS AT THE PROPER DEPTH THE ROOT COLLARS SHOULD BE AT GROUND LEVEL.
 - MULCH THE SOIL SURFACE AS INDICATED ON DRAWINGS.
 - WATER PLANTS THOROUGHLY FOLLOWING PLANTING.
 - REFER TO SPECIFICATIONS FOR MAINTENANCE REQUIREMENTS.

- SOD NOTES:**
- SODDED AREAS SHALL HAVE A MINIMUM 150mm TOPSOIL.
 - FIRM THE SOIL BY GENTLY TAMPING OR ROLLING THE TOPSOIL. DO NOT COMPACT THE SOIL. EXCESSIVE FORCE WILL DESTROY THE SOIL STRUCTURE AND INHIBIT GERMINATION.
 - CUT THE GRASS TO 50mm WHENEVER IT REACHES THE HEIGHT OF 70mm. REMOVE CLIPPINGS THAT WILL SMOTHER GRASS.
 - SODDED AREAS WILL BE ACCEPTED BY THE PROJECT MANAGER FOLLOWING PERFORMANCE ACCEPTANCE, PROVIDED:
 - SEEDED AREAS ARE PROPERLY ESTABLISHED.
 - TURF IS FREE OF DEAD SPOTS AND WEEDS.
 - NO SURFACE SOIL IS VISIBLE WHEN GRASS HAS BEEN CUT TO A HEIGHT OF 50mm
 - TURF AREAS HAVE BEEN CUT NO LESS THAN TWICE. THE LAST CUT BEING CARRIED OUT WITHIN 24 HOURS PRIOR TO THE ACCEPTANCE INSPECTION.

PLANT LIST A

KEY	QTY.	BOTANICAL NAME	COMMON NAME	CAI/HT.	ROOT (mm)
LARGE DECIDUOUS TREES					
AS	12	ACER SACCHARUM 'BONIFERE'	BONIFERE SUGAR MAPLE	50	B&B
AR	11	ACER RUBRUM	RED MAPLE	50	B&B
CO	16	CELTIS OCCIDENTALIS	HACKBERRY	50	B&B
GB	17	GINKGO BILOBA	GINKGO	50	B&B
GS	14	GLEDITSIA TRACANTHOS VAR INERMIS	HONEYLOCUST	50	B&B
QR	11	QUERCUS RUBRA	RED OAK	50	B&B
MEDIUM DECIDUOUS TREES					
TM	4	TILIA MONGOLICA	MONGOLIAN LINDEN	50	B&B
DECIDUOUS SHRUBS					
Cs	94	CORNUS SERICEA 'KELSEY'	KELSEY DOGWOOD	3 GAL.	
Hs	103	HYDRANGEA ARBORESCENS 'ANNABELLE'	ANNABELLE HYDRANGEA	3 GAL.	
Ps	71	PHILADELPHUS X 'SNOWBELLE'	SNOWBELLE MOCKORANGE	3 GAL.	
So	104	SORBARIA SORBIFOLIA	FALSE SPIREA	3 GAL.	
CONIFEROUS SHRUB					
Jv	129	JUNIPERUS VIRGINIANA 'BLUE ARROW'	BLUE ARROW JUNIPER	3 GAL.	
ORNAMENTAL GRASSES					
ca	321	CALAMAGROSTIS X ACUTIFLORA 'KARL FOERSTER'	KARL FOERSTER REED GRASS	1 GAL.	
cp	1988	CAREX PENNSYLVANICA	OAK SEDGE	1 GAL.	
ss	486	SCHIZACHYRIUM SCOPARIUM	LITTLE BLUESTEM	1 GAL.	
AMENITY AREA					
KEY	QTY.	BOTANICAL NAME	COMMON NAME	CAI/HT.	ROOT (mm)
DECIDUOUS SHRUBS					
Cs	13	CORNUS SERICEA 'KELSEY'	KELSEY DOGWOOD	3 GAL.	
Ps	42	PHILADELPHUS X 'SNOWBELLE'	SNOWBELLE MOCKORANGE	3 GAL.	
CONIFEROUS SHRUB					
Jv	34	JUNIPERUS VIRGINIANA 'BLUE ARROW'	BLUE ARROW JUNIPER	3 GAL.	
ORNAMENTAL GRASSES					
ca	157	CALAMAGROSTIS X ACUTIFLORA 'KARL FOERSTER'	KARL FOERSTER REED GRASS	1 GAL.	
ss	61	SCHIZACHYRIUM SCOPARIUM	LITTLE BLUESTEM	1 GAL.	

Contractor shall check all dimensions on the work and report any discrepancy to the Landscape Architect before proceeding. All drawings and specifications are the property of the Landscape Architect and must be returned at the completion of the work. This drawing is not to be used for construction until signed by the Landscape Architect.



LEGEND

PROPERTY LINE

FENCING

- WASTE ENCLOSURE FENCE
- PEDESTRIAN ACCESS GATE

PLANTING

- LARGE DECIDUOUS TREE
- DECIDUOUS SHRUB
- CONIFEROUS SHRUB
- GRASSES/PERENNIALS
- SODDING

PAVING

- ASPHALT PAVING
- CIP CONCRETE PAVING
- HEAVY DUTY CONCRETE PAVING
- RIVERSTONE PAVING
- UNIT PAVING

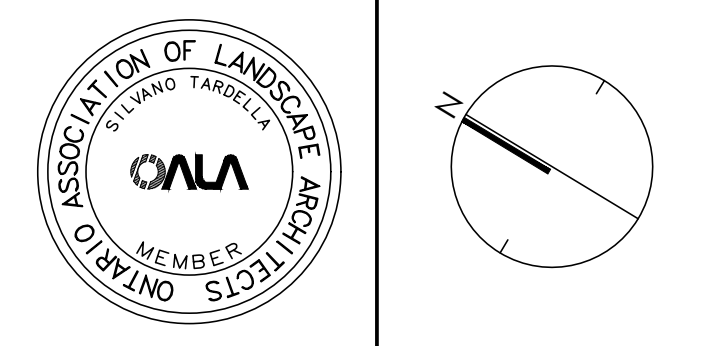
PLANTING KEY

- TREE SPECIES
- QUANTITY
- SHRUB SPECIES
- QUANTITY

DETAIL KEY

- DETAIL NO.
- SHEET NO.

2	Re-issued for First Submission	FEB 2022
1	Issued for First Submission	NOV 2021
No.	Description	Date

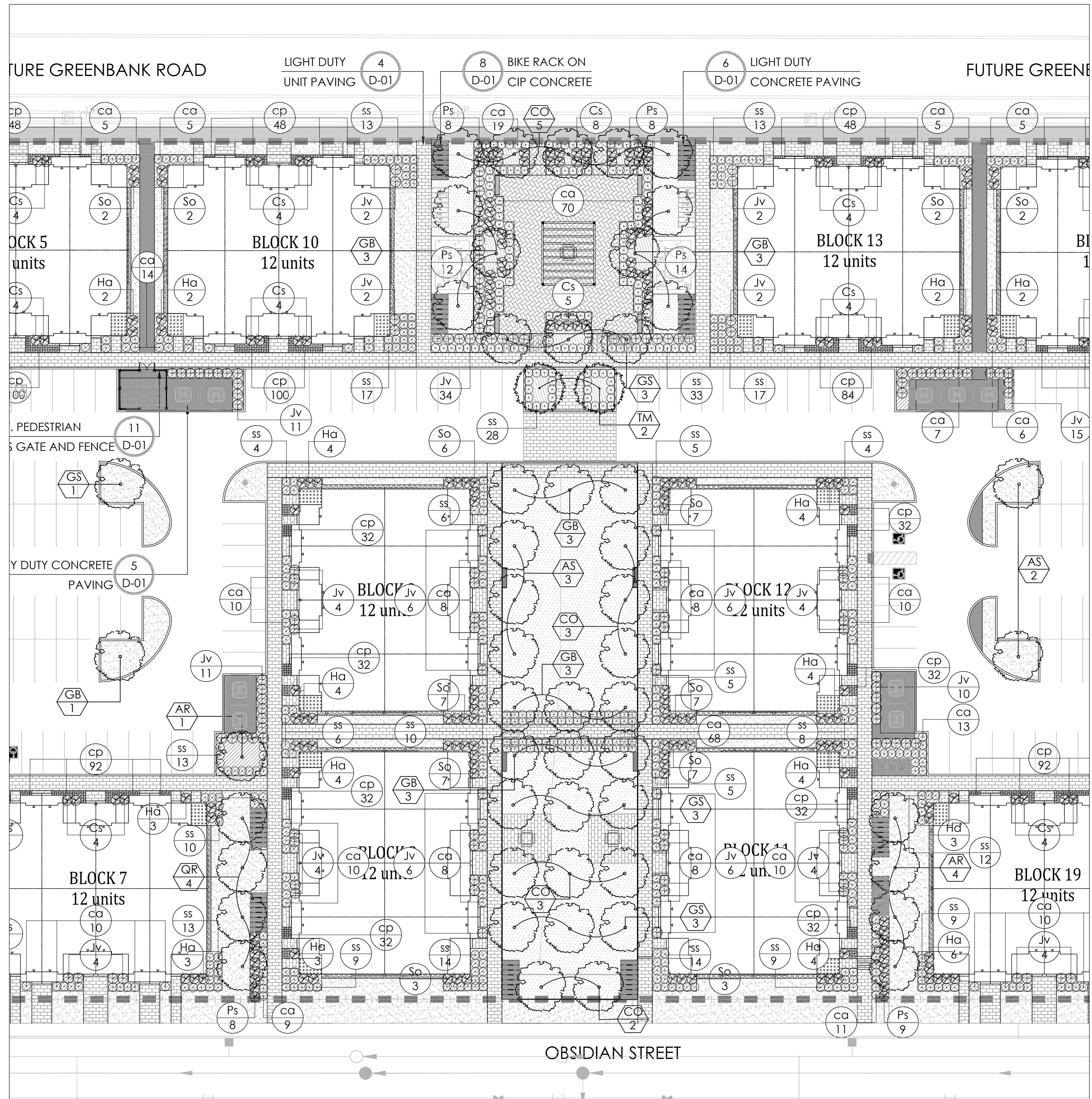


NAK
design strategies

1285 WELLINGTON STREET WEST, OTTAWA, ON K1Y 3A8 CANADA
T 613.237.2345 F 613.237.4423 NAKDESIGNSTRATEGIES.COM

HALF MOON BAY SOUTH
PHASE 8

LANDSCAPE PLAN



- GENERAL NOTES:**
- ACER RUBRUM, CELTIS OCCIDENTALIS, AND QUERCUS RUBRA TO BE SPRING DUG SPECIMENS AND PLANTED IN THE SPRING ONLY.
 - THE LOCATION OF THE TREES SHOWN ON THIS PLAN IS APPROXIMATE AND SHALL NOT BE SCALED FROM THIS DRAWING. THIS PLAN MUST BE READ IN CONJUNCTION WITH THE APPROVED CUP AND CITY CROSS SECTIONS.
 - CONTRACTOR SHALL ENSURE THAT ALL UTILITY LOCATIONS ARE OBTAINED PRIOR TO ANY EXCAVATION FOR LANDSCAPING.
 - LOCATION OF ALL PLANT MATERIALS TO BE STAKED BY THE CONTRACTOR AND VERIFIED IN THE FIELD BY LANDSCAPE ARCHITECT & CITY OF OTTAWA PRIOR TO THE EXCAVATION OF PITS.
 - ALL PLANT MATERIAL SHALL BE NURSERY GROWN STOCK UNLESS OTHERWISE NOTED.
 - TREES TO HAVE A MINIMUM 1800 CLEAR STEM ABOVE GRADE.
 - PLACE SOD ON A MINIMUM 150mm TOPSOIL.
 - CONTRACTOR TO MAKE GOOD ALL EXISTING AREAS DAMAGED BY HIS WORK TO THE SATISFACTION OF THE CITY OF OTTAWA.
 - THE CITY WILL BE NOTIFIED IF ANY TREES CANNOT BE LOCATED OR PLANTED DUE TO CONFLICTS WITH UTILITIES OR DRIVEWAYS. THE REQUIRED TREES NOT PLANTED ARE SUBJECT TO TREE BANKING. THE FINAL NUMBER OF TREES TO BE BANKED WILL BE PROVIDED TO THE CITY FOLLOWING ALL PLANTINGS.
 - ALL PLANT MATERIAL SHALL BE WARRANTED FOR TWO YEARS FROM THE DATE OF PERFORMANCE ACCEPTANCE AS DETERMINED BY THE CITY OF OTTAWA.
 - PERIODIC REVIEWS OF PLANTING SHALL BE CARRIED OUT BY THE LANDSCAPE ARCHITECT.
 - PLANTINGS TO BE STAKED FOR APPROVAL PRIOR TO CONSTRUCTION.

- PLANTING NOTES:**
- CONTRACTOR TO VERIFY LOCATION OF ALL SERVICES PRIOR TO ANY EXCAVATION.
 - LOCATIONS OF ALL PLANT MATERIALS TO BE STAKED BY THE CONTRACTOR AND VERIFIED IN THE FIELD BY LANDSCAPE ARCHITECT PRIOR TO THE EXCAVATION OF PITS.
 - ALL PLANT MATERIAL SHALL BE NURSERY GROWN STOCK UNLESS OTHERWISE NOTED.
 - DECIDUOUS TREES TO HAVE A MINIMUM 1800 CLEAR STEM ABOVE GRADE.
 - ALL PLANT MATERIAL SHALL BE WARRANTED FOR TWO YEARS FROM THE DATE OF PERFORMANCE ACCEPTANCE AS DETERMINED BY THE LANDSCAPE ARCHITECT.
 - ALL STEEL T-BARS TO BE REMOVED AT THE ONE YEAR INTERIM INSPECTION UNLESS OTHERWISE DIRECTED BY THE LANDSCAPE ARCHITECT.
 - CONTRACTOR TO MAKE GOOD ALL EXISTING AREAS DAMAGED BY HIS WORK TO THE SATISFACTION OF THE LANDSCAPE ARCHITECT.
 - PERIODIC REVIEWS OF PLANTING SHALL BE CARRIED OUT BY THE LANDSCAPE ARCHITECT.
 - ANY PROPOSED SUBSTITUTIONS OF PLANT SPECIES SHALL BE MADE WITH PLANTS OF EQUIVALENT OVERALL FORM, HEIGHT, BRANCHING HABIT, FLOWER, LEAF, COLOR, FRUIT AND CULTURE AND ONLY AFTER APPROVAL OF THE LANDSCAPE ARCHITECT.

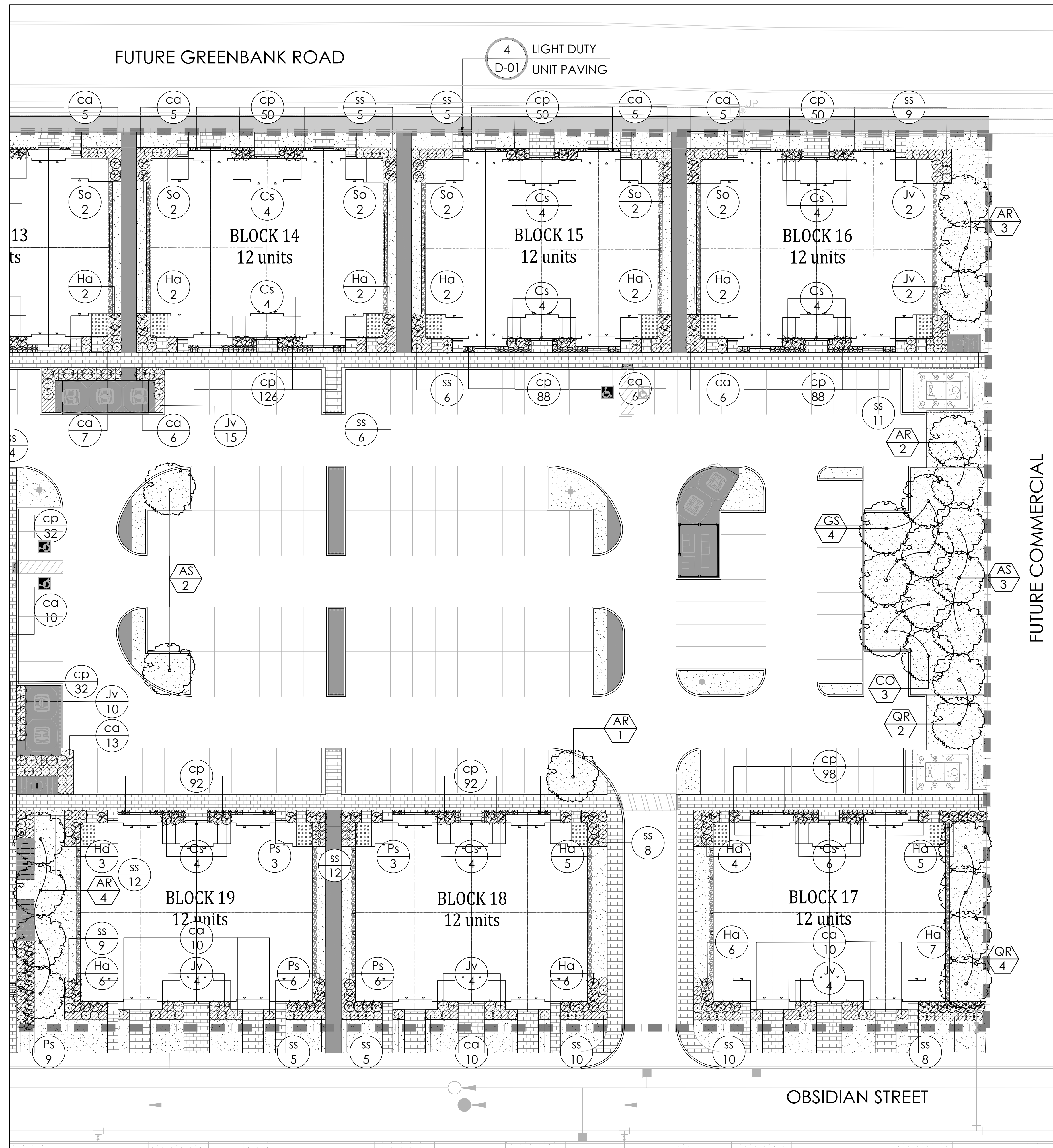
- SHRUB NOTES:**
- PLACE THE SHRUB AS UPRIGHT AS POSSIBLE, INCLUDING ON SLOPES.
 - PLANT SHRUBS AT THE PROPER DEPTH AS INDICATED ON THE DRAWINGS.
 - PACK THE SOIL WELL AROUND THE PLANT BASE TO REMOVE AIR POCKETS, BUT DO NOT COMPACT SOIL. PRESS SOIL GENTLY BUT FIRMLY TO PREVENT SHOCKING THE ROOTS.
 - PLACE SPECIES ACCORDING TO THE QUANTITIES AND SPACING AS INDICATED ON THE DRAWINGS.
 - PLANT SHRUBS AT THE PROPER DEPTH THE ROOT COLLARS SHOULD BE AT GROUND LEVEL.
 - MULCH THE SOIL SURFACE AS INDICATED ON DRAWINGS.
 - WATER PLANTS THOROUGHLY FOLLOWING PLANTING.
 - REFER TO SPECIFICATIONS FOR MAINTENANCE REQUIREMENTS.

- SOD NOTES:**
- SODDED AREAS SHALL HAVE A MINIMUM 150mm TOPSOIL.
 - FIRM THE SOIL BY GENTLY TAMPING OR ROLLING THE TOPSOIL. DO NOT COMPACT THE SOIL. EXCESSIVE FORCE WILL DESTROY THE SOIL STRUCTURE AND INHIBIT GERMINATION.
 - CUT THE GRASS TO 50mm WHENEVER IT REACHES THE HEIGHT OF 70mm. REMOVE CLIPPINGS THAT WILL SMOTHER GRASS.
 - SODDED AREAS WILL BE ACCEPTED BY THE PROJECT MANAGER FOLLOWING PERFORMANCE ACCEPTANCE, PROVIDED:
 - SEEDS ARE PROPERLY ESTABLISHED.
 - TURF IS FREE OF DEAD SPOTS AND WEEDS.
 - NO SURFACE SOIL IS VISIBLE WHEN GRASS HAS BEEN CUT TO A HEIGHT OF 50mm
 - TURF AREAS HAVE BEEN CUT NO LESS THAN TWICE, THE LAST CUT BEING CARRIED OUT WITHIN 24 HOURS PRIOR TO THE ACCEPTANCE INSPECTION.

PLANT LIST A

KEY	QTY.	BOTANICAL NAME	COMMON NAME	CAL/HT.	ROOT (mm)
LARGE DECIDUOUS TREES					
AS	12	ACER SACCHARUM 'BONIFIRE'	BONIFIRE SUGAR MAPLE	50	B&B
AR	11	ACER RUBRUM	RED MAPLE	50	B&B
CO	16	CELTIS OCCIDENTALIS	HACKBERRY	50	B&B
GB	17	GINKGO BILOBA	GINKGO	50	B&B
GS	14	GLEDITSIA TRIACANTHOS VAR INERMIS	HONEYLOCUST	50	B&B
QR	11	QUERCUS RUBRA	RED OAK	50	B&B
MEDIUM DECIDUOUS TREES					
TM	4	TILIA MONGOLICA	MONGOLIAN LINDEN	50	B&B
DECIDUOUS SHRUBS					
CS	94	CORNUS SERICEA 'KELSEY'	KELSEY DOGWOOD	3 GAL.	
Hd	103	HYDRANGEA ARBORESCENS 'ANNABELLE'	ANNABELLE HYDRANGEA	3 GAL.	
Ps	71	PHILADELPHUS X 'SNOWBELLE'	SNOWBELLE MOCKORANGE	3 GAL.	
So	104	SORBARIA SORBIIFOLIA	FALSE SPIREA	3 GAL.	
CONIFEROUS SHRUB					
Jv	129	JUNIPERUS VIRGINIANA 'BLUE ARROW'	BLUE ARROW JUNIPER	3 GAL.	
ORNAMENTAL GRASSES					
ca	321	CALAMAGROSTIS X ACUTIFLORA 'KARL FOERSTER'	KARL FOERSTER REED GRASS	1 GAL.	
cp	1988	CAREX PENSYLVANICA	OAK SEDGE	1 GAL.	
ss	486	SCHIZACHYRIUM SCOPARIUM	LITTLE BLUESTEM	1 GAL.	
AMENITY AREA					
KEY	QTY.	BOTANICAL NAME	COMMON NAME	CAL/HT.	ROOT (mm)
DECIDUOUS SHRUBS					
CS	13	CORNUS SERICEA 'KELSEY'	KELSEY DOGWOOD	3 GAL.	
Ps	42	PHILADELPHUS X 'SNOWBELLE'	SNOWBELLE MOCKORANGE	3 GAL.	
CONIFEROUS SHRUB					
Jv	34	JUNIPERUS VIRGINIANA 'BLUE ARROW'	BLUE ARROW JUNIPER	3 GAL.	
ORNAMENTAL GRASSES					
ca	157	CALAMAGROSTIS X ACUTIFLORA 'KARL FOERSTER'	KARL FOERSTER REED GRASS	1 GAL.	
ss	61	SCHIZACHYRIUM SCOPARIUM	LITTLE BLUESTEM	1 GAL.	

Contractor shall check all dimensions on the work and report any discrepancy to the Landscape Architect before proceeding. All drawings and specifications are the property of the Landscape Architect and must be returned at the completion of the work. This drawing is not to be used for construction until signed by the Landscape Architect.



- GENERAL NOTES:**
- ACER RUBRUM, CELTIS OCCIDENTALIS, AND QUERCUS RUBRA TO BE SPRING DUG SPECIMENS AND PLANTED IN THE SPRING ONLY.
 - THE LOCATION OF THE TREES SHOWN ON THIS PLAN IS APPROXIMATE AND SHALL NOT BE SCALED FROM THIS DRAWING. THIS PLAN MUST BE READ IN CONJUNCTION WITH THE APPROVED CUP AND CITY CROSS SECTIONS.
 - CONTRACTOR SHALL ENSURE THAT ALL UTILITY LOCATIONS ARE OBTAINED PRIOR TO ANY EXCAVATION FOR LANDSCAPING.
 - LOCATION OF ALL PLANT MATERIALS TO BE STAKED BY THE CONTRACTOR AND VERIFIED IN THE FIELD BY LANDSCAPE ARCHITECT & CITY OF OTTAWA PRIOR TO THE EXCAVATION OF PITS.
 - ALL PLANT MATERIAL SHALL BE NURSERY GROWN STOCK UNLESS OTHERWISE NOTED.
 - TREES TO HAVE A MINIMUM 1800 CLEAR STEM ABOVE GRADE.
 - PLACE SOD ON A MINIMUM 150mm TOPSOIL.
 - CONTRACTOR TO MAKE GOOD ALL EXISTING AREAS DAMAGED BY HIS WORK TO THE SATISFACTION OF THE CITY OF OTTAWA.
 - THE CITY WILL BE NOTIFIED IF ANY TREES CANNOT BE LOCATED OR PLANTED DUE TO CONFLICTS WITH UTILITIES OR DRIVEWAYS. THE REQUIRED TREES NOT PLANTED ARE SUBJECT TO TREE BANKING. THE FINAL NUMBER OF TREES TO BE BANKED WILL BE PROVIDED TO THE CITY FOLLOWING ALL PLANTINGS.
 - ALL PLANT MATERIAL SHALL BE WARRANTED FOR TWO YEARS FROM THE DATE OF PERFORMANCE ACCEPTANCE AS DETERMINED BY THE CITY OF OTTAWA.
 - PERIODIC REVIEWS OF PLANTING SHALL BE CARRIED OUT BY THE LANDSCAPE ARCHITECT.
 - PLANTINGS TO BE STAKED FOR APPROVAL PRIOR TO CONSTRUCTION.

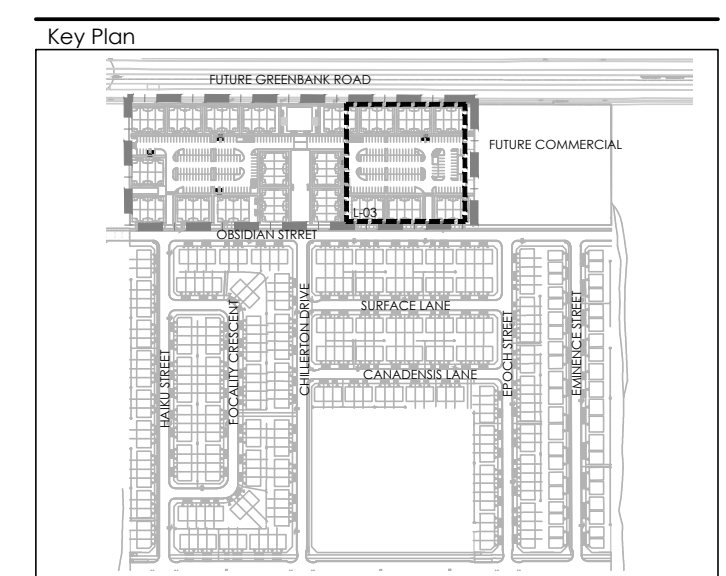
- PLANTING NOTES:**
- CONTRACTOR TO VERIFY LOCATION OF ALL SERVICES PRIOR TO ANY EXCAVATION.
 - LOCATIONS OF ALL PLANT MATERIALS TO BE STAKED BY THE CONTRACTOR AND VERIFIED IN THE FIELD BY LANDSCAPE ARCHITECT PRIOR TO THE EXCAVATION OF PITS.
 - ALL PLANT MATERIAL SHALL BE NURSERY GROWN STOCK UNLESS OTHERWISE NOTED.
 - DECIDUOUS TREES TO HAVE A MINIMUM 1800 CLEAR STEM ABOVE GRADE.
 - ALL PLANT MATERIAL SHALL BE WARRANTED FOR TWO YEARS FROM THE DATE OF PERFORMANCE ACCEPTANCE AS DETERMINED BY THE LANDSCAPE ARCHITECT.
 - ALL STEEL T-BARS TO BE REMOVED AT THE ONE YEAR INTERIM INSPECTION UNLESS OTHERWISE DIRECTED BY THE LANDSCAPE ARCHITECT.
 - CONTRACTOR TO MAKE GOOD ALL EXISTING AREAS DAMAGED BY HIS WORK TO THE SATISFACTION OF THE LANDSCAPE ARCHITECT.
 - PERIODIC REVIEWS OF PLANTING SHALL BE CARRIED OUT BY THE LANDSCAPE ARCHITECT.
 - ANY PROPOSED SUBSTITUTIONS OF PLANT SPECIES SHALL BE MADE WITH PLANTS OF EQUIVALENT OVERALL FORM, HEIGHT, BRANCHING HABIT, FLOWER, LEAF, COLOR, FRUIT AND CULTURE AND ONLY AFTER APPROVAL OF THE LANDSCAPE ARCHITECT.

- SHRUB NOTES:**
- PLACE THE SHRUB AS UPRIGHT AS POSSIBLE, INCLUDING ON SLOPES.
 - PLANT SHRUBS AT THE PROPER DEPTH AS INDICATED ON THE DRAWINGS.
 - PACK THE SOIL WELL AROUND THE PLANT BASE TO REMOVE AIR POCKETS, BUT DO NOT COMPACT SOIL. PRESS SOIL GENTLY BUT FIRMLY TO PREVENT SHOCKING THE ROOTS.
 - PLACE SPECIES ACCORDING TO THE QUANTITIES AND SPACING AS INDICATED ON THE DRAWINGS.
 - PLANT SHRUBS AT THE PROPER DEPTH THE ROOT COLLARS SHOULD BE AT GROUND LEVEL.
 - MULCH THE SOIL SURFACE AS INDICATED ON DRAWINGS.
 - WATER PLANTS THOROUGHLY FOLLOWING PLANTING.
 - REFER TO SPECIFICATIONS FOR MAINTENANCE REQUIREMENTS.

- SOD NOTES:**
- SODDED AREAS SHALL HAVE A MINIMUM 150mm TOPSOIL.
 - FIRM THE SOIL BY GENTLY TAMPING OR ROLLING THE TOPSOIL. DO NOT COMPACT THE SOIL. EXCESSIVE FORCE WILL DESTROY THE SOIL STRUCTURE AND INHIBIT GERMINATION.
 - CUT THE GRASS TO 50mm WHENEVER IT REACHES THE HEIGHT OF 70mm. REMOVE CLIPPINGS THAT WILL SMOOTH GRASS.
 - SODDED AREAS WILL BE ACCEPTED BY THE PROJECT MANAGER FOLLOWING PERFORMANCE ACCEPTANCE, PROVIDED:
 - SEEDING AREAS ARE PROPERLY ESTABLISHED.
 - TURF IS FREE OF DEAD SPOTS AND WEEDS.
 - NO SURFACE SOIL IS VISIBLE WHEN GRASS HAS BEEN CUT TO A HEIGHT OF 50mm.
 - TURF AREAS HAVE BEEN CUT NO LESS THAN TWICE, THE LAST CUT BEING CARRIED OUT WITHIN 24 HOURS PRIOR TO THE ACCEPTANCE INSPECTION.

PLANT LIST A

KEY	QTY.	BOTANICAL NAME	COMMON NAME	CAL/HT.	ROOT (mm)
LARGE DECIDUOUS TREES					
AS	12	ACER SACCHARUM 'BONAFIRE'	BONAFIRE SUGAR MAPLE	50	B&B
AR	11	ACER RUBRUM	RED MAPLE	50	B&B
CO	16	CELTIS OCCIDENTALIS	HACKBERRY	50	B&B
GB	17	GINKGO BILOBA	GINKGO	50	B&B
GS	14	GLEDITSIA TRIACANTHOS VAR INERMIS	HONEYLOCUST	50	B&B
QR	11	QUERCUS RUBRA	RED OAK	50	B&B
MEDIUM DECIDUOUS TREES					
TM	4	TILIA MONGOLICA	MONGOLIAN LINDEN	50	B&B
DECIDUOUS SHRUBS					
Cs	94	CORNUS SERICEA 'KELSEY'	KELSEYI DOGWOOD	3 GAL.	
Ho	103	HYDRANGEA ARBORESCENS 'ANNABELLE'	ANNABELLE HYDRANGEA	3 GAL.	
Ps	71	PHILADELPHUS X 'SNOWBELLE'	SNOWBELLE MOCKORANGE	3 GAL.	
So	104	SORBARIA SORBIFOLIA	FALSE SPIREA	3 GAL.	
CONIFEROUS SHRUB					
Jv	129	JUNIPERUS VIRGINIANA 'BLUE ARROW'	BLUE ARROW JUNIPER	3 GAL.	
ORNAMENTAL GRASSES					
ca	321	CALAMAGROSTIS X ACUTIFLORA 'KARL FOERSTER'	KARL FOERSTER REED GRASS	1 GAL.	
cp	1988	CAREX PENSYLVANICA	OAK SEDGE	1 GAL.	
ss	486	SCHIZACHYRIUM SCOPARIUM	LITTLE BLUESTEM	1 GAL.	
AMENITY AREA					
KEY	QTY.	BOTANICAL NAME	COMMON NAME	CAL/HT.	ROOT (mm)
DECIDUOUS SHRUBS					
Cs	13	CORNUS SERICEA 'KELSEY'	KELSEYI DOGWOOD	3 GAL.	
Ps	42	PHILADELPHUS X 'SNOWBELLE'	SNOWBELLE MOCKORANGE	3 GAL.	
CONIFEROUS SHRUB					
Jv	34	JUNIPERUS VIRGINIANA 'BLUE ARROW'	BLUE ARROW JUNIPER	3 GAL.	
ORNAMENTAL GRASSES					
ca	157	CALAMAGROSTIS X ACUTIFLORA 'KARL FOERSTER'	KARL FOERSTER REED GRASS	1 GAL.	
ss	61	SCHIZACHYRIUM SCOPARIUM	LITTLE BLUESTEM	1 GAL.	



LEGEND

--- PROPERTY LINE

FENCING

--- WASTE ENCLOSURE FENCE

--- PEDESTRIAN ACCESS GATE

PLANTING

○ LARGE DECIDUOUS TREE

○ DECIDUOUS SHRUB

○ CONIFEROUS SHRUB

○ GRASSES/PERENNIALS

○ SODDING

PAVING

--- ASPHALT PAVING

--- CIP CONCRETE PAVING

--- HEAVY DUTY CONCRETE PAVING

--- RIVERSTONE PAVING

--- UNIT PAVING

PLANTING KEY

XX-00 TREE SPECIES QUANTITY

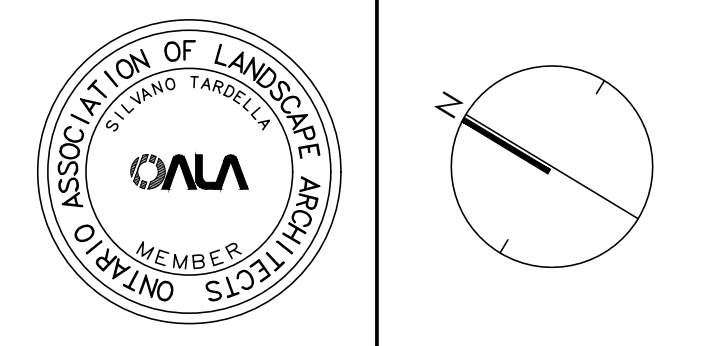
XX-00 SHRUB SPECIES QUANTITY

DETAIL KEY

1-01 DETAIL NO.

1-01 SHEET NO.

No.	Description	Date
2	Re-issued for First Submission	FEB 2022
1	Issued for First Submission	NOV 2021



NAK
design strategies

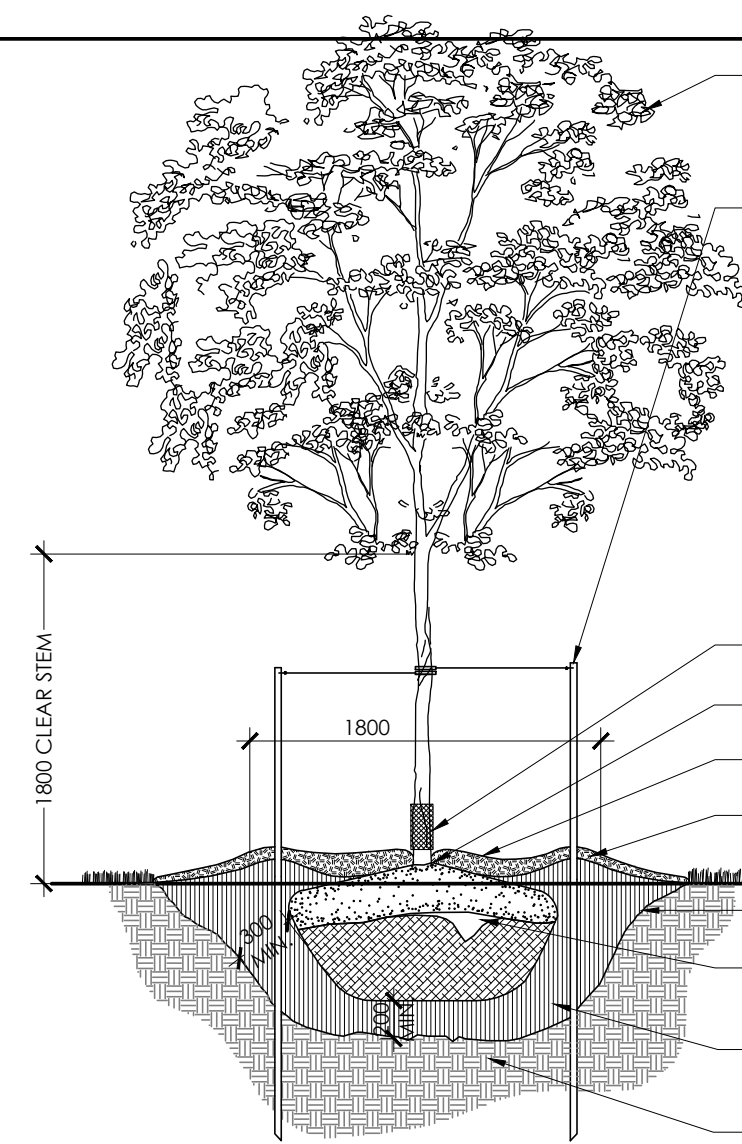
1285 WELLINGTON STREET WEST, OTTAWA, ON K1Y 3A8 CANADA
T 613.237.2345 F 613.237.6223 NAKDESIGNSTRATEGIES.COM

HALF MOON BAY SOUTH
PHASE 8

Title
LANDSCAPE PLAN

Date DEC 2021 Sheet
Scale 1:250
Drawn TY
CheckedDTM
Job No. 20-210

L-03

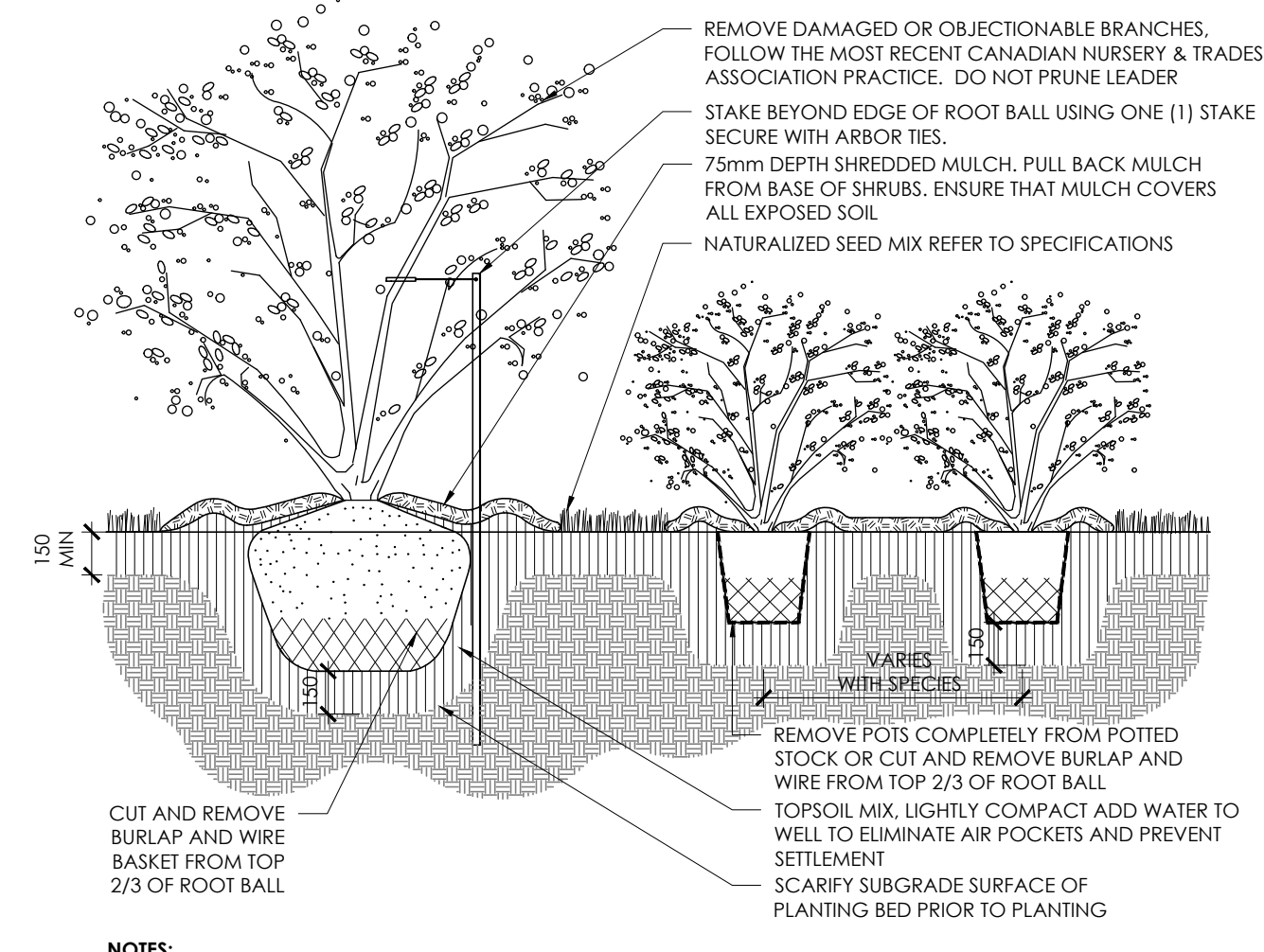


REMOVE DAMAGED OR OBJECTIONABLE BRANCHES. FOLLOW THE MOST RECENT CANADIAN NURSERY & TRADES ASSOCIATION PRACTICE. DO NOT PRUNE LEADER. STAKE BEYOND EDGE OF ROOT BALL USING TWO (2) STAKES 2400mm (8ft) LONG. SECURE AROUND TRUNK AND MAIN BRANCHES WITH NO.12 GALVANIZED WIRE ENCASED IN 12mm DIAMETER RUBBER HOSE. ALLOWING SLACK IN GALVANIZED WIRE. GUY WIRES SHOULD BE WOUND TIGHTLY - THERE MUST BE NO PROTRUDING WIRE WHICH MAY CREATE A HAZARD. USE THREE (3) STAKES FOR TREES 3m IN HEIGHT OR LARGER. LARGER TREES MAY BE GUYED RATHER THAN STAKED, AS DIRECTED BY THE LANDSCAPE ARCHITECT. APPLY 450mm MINIMUM FLEXIBLE PLASTIC RODENT COLLAR. ROOT COLLAR TO BE SET 100mm ABOVE FINISHED GRADE. 75mm SHREDDED MULCH AS PER SPECIFICATIONS. CONSTRUCT 100mm SAUCER AROUND TREE BASE. FINISH GRADE. SCARIFY SURFACE OF SUBGRADE PRIOR TO PLANTING. CUT AND REMOVE BURLAP AND WIRE BASKET FROM TOP 2/3 OF ROOT BALL WITHOUT DISTURBING ROOTS. TOPSOIL MIX, LIGHTLY COMPACT AND WATER WELL TO ELIMINATE AIR POCKETS AND PREVENT SETTLEMENT. COMPACTED SUBGRADE.

- NOTES:**
1. REMOVE STAKES AND RODENT GUARD AFTER ONE YEAR OR UNTIL TAKEOVER UNLESS OTHERWISE DIRECTED BY THE LANDSCAPE ARCHITECT.
 2. TOPSOIL MIXTURE AND SHREDDED MULCH AS PER SPECIFICATION.
 3. REMOVE TREE WRAP AFTER PLANTING.
 4. CALIPER TO BE MEASURED AT THE BASE OF TREE AT ROOT BALL.

1 DECIDUOUS TREE PLANTING

N.T.S.

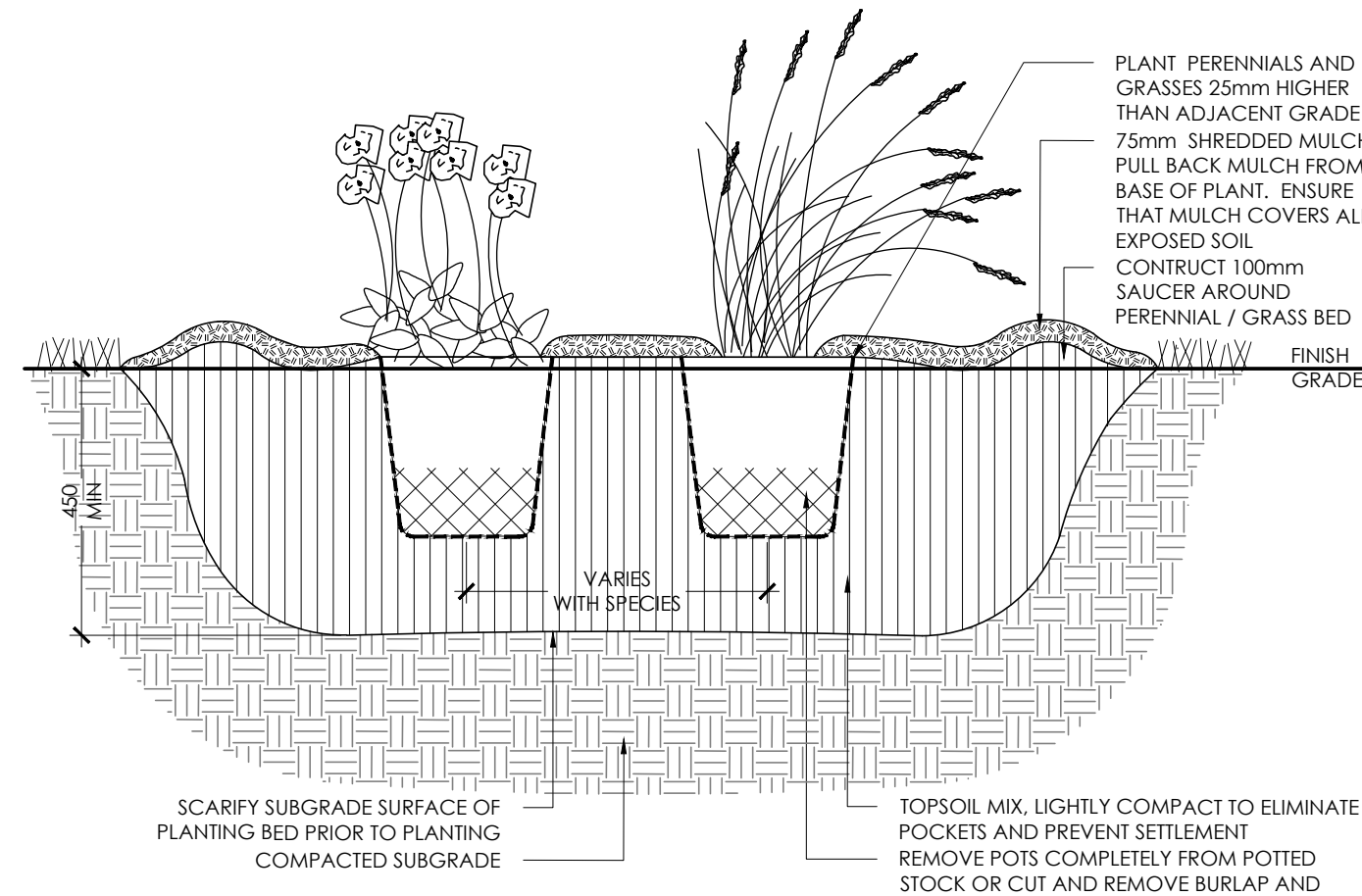


REMOVE DAMAGED OR OBJECTIONABLE BRANCHES. FOLLOW THE MOST RECENT CANADIAN NURSERY & TRADES ASSOCIATION PRACTICE. DO NOT PRUNE LEADER. STAKE BEYOND EDGE OF ROOT BALL USING ONE (1) STAKE SECURE WITH ARBOR TIES. 75mm DEPTH SHREDDED MULCH. PULL BACK MULCH FROM BASE OF SHRUBS. ENSURE THAT MULCH COVERS ALL EXPOSED SOIL. NATURALIZED SEED MIX REFER TO SPECIFICATIONS. 150mm MIN. CUT AND REMOVE BURLAP AND WIRE BASKET FROM TOP 2/3 OF ROOT BALL. REMOVE POTS COMPLETELY FROM POTTED STOCK OR CUT AND REMOVE BURLAP AND WIRE FROM TOP 2/3 OF ROOT BALL. TOPSOIL MIX, LIGHTLY COMPACT ADD WATER TO WELL TO ELIMINATE AIR POCKETS AND PREVENT SETTLEMENT. SCARIFY SUBGRADE SURFACE OF PLANTING BED PRIOR TO PLANTING. VARIES WITH SPECIES.

- NOTES:**
1. TOPSOIL MIXTURE AND SHREDDED MULCH AS PER SPECIFICATION.
 2. SHRUBS SPECIFIED TO BE PLANTED SO THAT ROOTS ARE FULLY EXTENDED IN PLANTING HOLE WITH SOIL MIX BACKFILLED CAREFULLY TO PREVENT ROOT DAMAGE.
 3. PROVIDE 100mm HIGH EARTH SAUCER AROUND SHRUB BED.
 4. STAKES TO BE REMOVED AFTER ONE YEAR OR UNTIL TAKEOVER UNLESS OTHERWISE DIRECTED BY LANDSCAPE ARCHITECT.

2 SHRUB BED PLANTING

N.T.S.

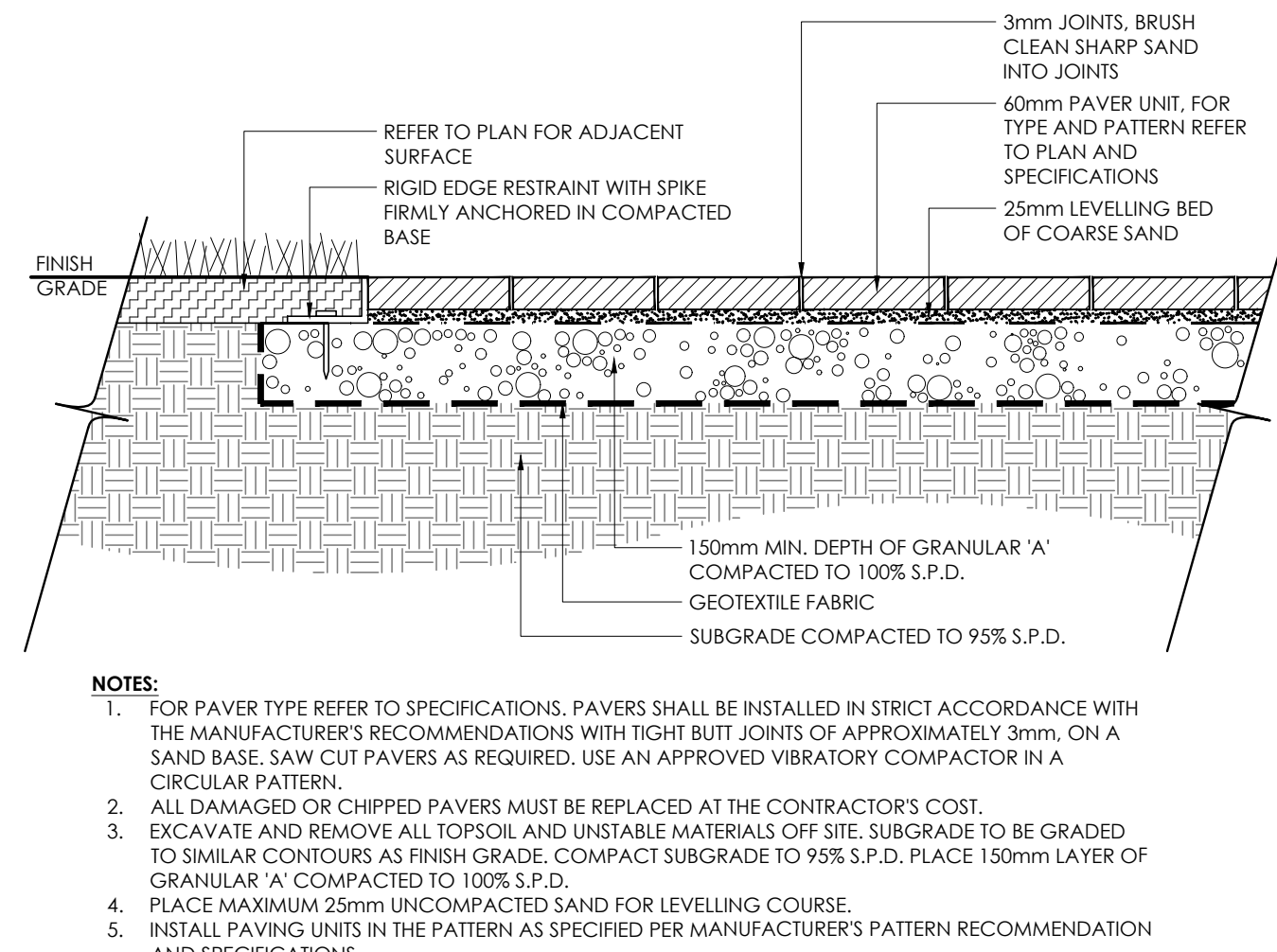


PLANT PERENNIALS AND GRASSES 25mm HIGHER THAN ADJACENT GRADE. 75mm SHREDDED MULCH. PULL BACK MULCH FROM BASE OF PLANT. ENSURE THAT MULCH COVERS ALL EXPOSED SOIL. CONTRUCT 100mm SAUCER AROUND PERENNIAL / GRASS BED. FINISH GRADE. SCARIFY SUBGRADE SURFACE OF PLANTING BED PRIOR TO PLANTING. TOPSOIL MIX, LIGHTLY COMPACT TO ELIMINATE AIR POCKETS AND PREVENT SETTLEMENT. REMOVE POTS COMPLETELY FROM POTTED STOCK OR CUT AND REMOVE BURLAP AND WIRE FROM TOP 2/3 OF ROOT BALL. VARIES WITH SPECIES.

- NOTES:**
1. TOPSOIL MIXTURE AND SHREDDED MULCH AS PER SPECIFICATION.
 2. PROVIDE 100mm HIGH EARTH SAUCER AROUND PERENNIAL/GRASS BED.

3 PERENNIAL AND ORNAMENTAL GRASS PLANTING

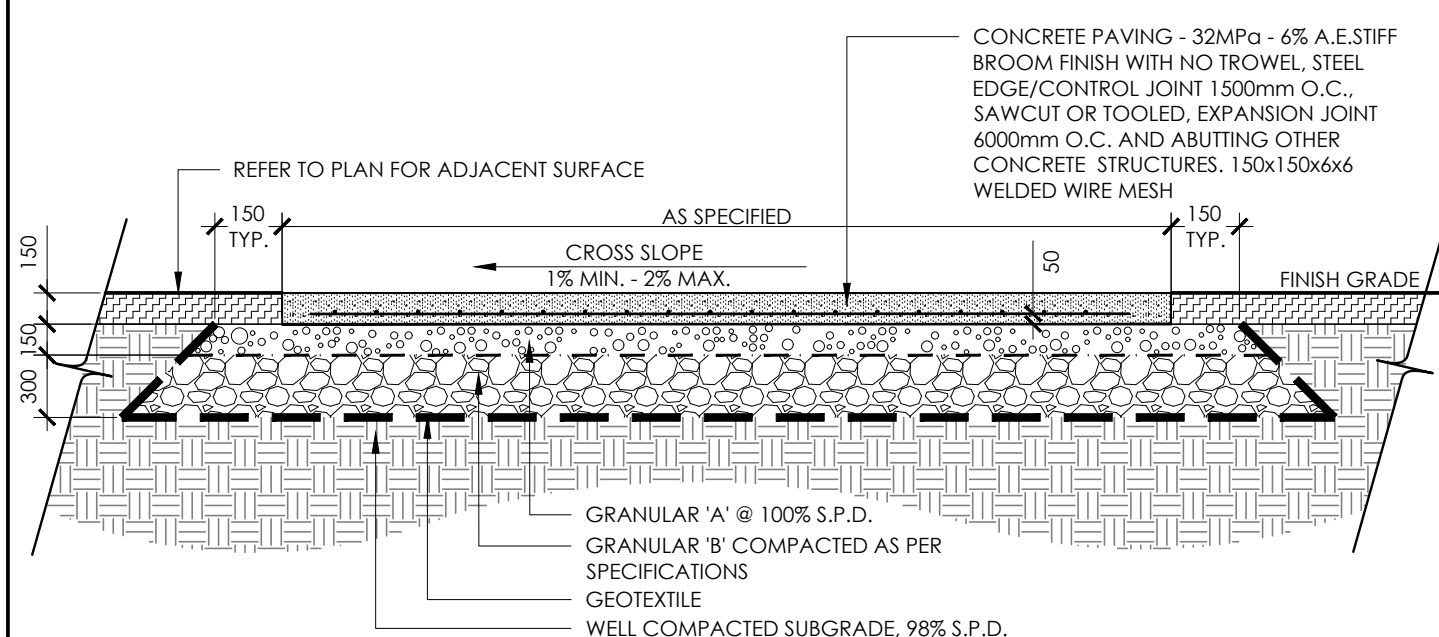
N.T.S.



- NOTES:**
1. FOR PAVES TYPE REFER TO SPECIFICATIONS. PAVES SHALL BE INSTALLED IN STRICT ACCORDANCE WITH THE MANUFACTURER'S RECOMMENDATIONS WITH TIGHT BUTT JOINTS OF APPROXIMATELY 3mm. ON A SAND BASE. SAW CUT PAVES AS REQUIRED. USE AN APPROVED VIBRATORY COMPACTOR IN A CIRCULAR PATTERN.
 2. ALL DAMAGED OR CHIPPED PAVES MUST BE REPLACED AT THE CONTRACTOR'S COST.
 3. EXCAVATE AND REMOVE ALL TOPSOIL AND UNSTABLE MATERIALS OFF SITE. SUBGRADE TO BE GRADED TO SIMILAR CONTOURS AS FINISH GRADE. COMPACT SUBGRADE TO 95% S.P.D. PLACE 150mm LAYER OF GRANULAR 'A' COMPACTED TO 100% S.P.D.
 4. PLACE MAXIMUM 25mm UNCOMPACTED SAND FOR LEVELLING COURSE.
 5. INSTALL PAVING UNITS IN THE PATTERN AS SPECIFIED PER MANUFACTURER'S PATTERN RECOMMENDATION AND SPECIFICATIONS.
 6. RETAIN EDGING WITH RIGID PAVE EDGE RESTRAINTS AS PER SPECIFICATIONS.

4 LIGHT DUTY UNIT PAVING

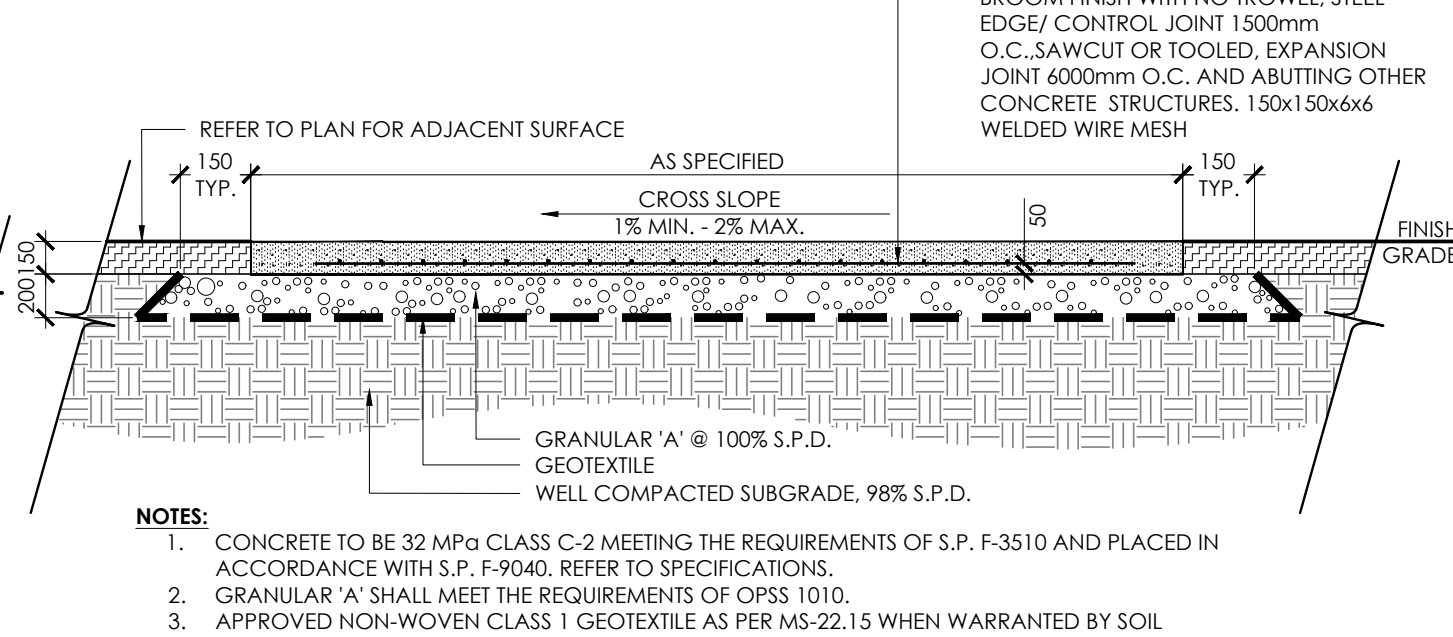
N.T.S.



- NOTES:**
1. CONCRETE TO BE 32 MPa CLASS C-2 MEETING THE REQUIREMENTS OF S.P. F-3510 AND PLACED IN ACCORDANCE WITH S.P. F-9040. REFER TO SPECIFICATIONS.
 2. GRANULAR 'A' SHALL MEET THE REQUIREMENTS OF OPSS 1010.
 3. APPROVED NON-WOVEN CLASS 1 GEOTEXTILE AS PER MS-22.15 WHEN WARRANTED BY SOIL CONDITION. SUBJECT TO APPROVAL BY THE LANDSCAPE ARCHITECT.

5 HEAVY DUTY CONCRETE PAVING

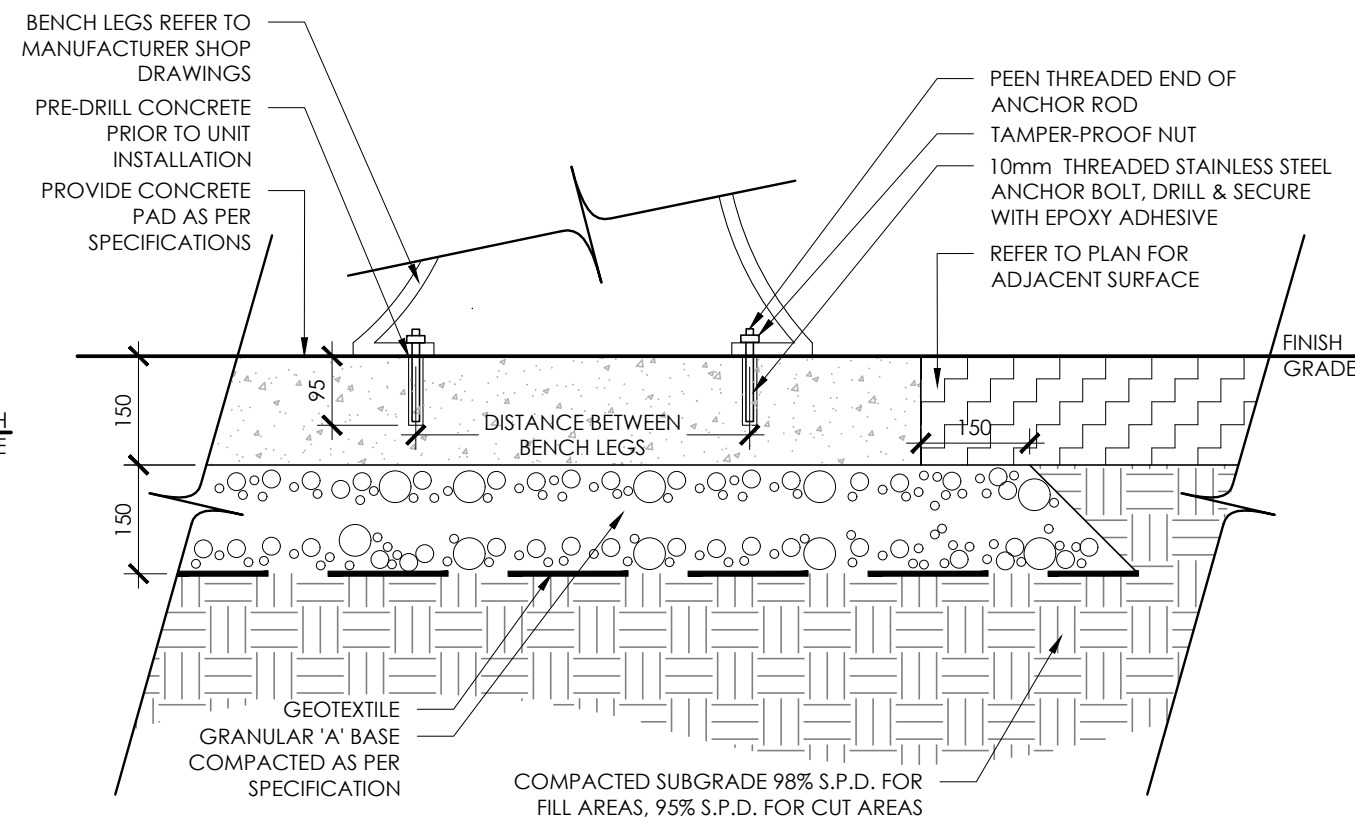
N.T.S.



- NOTES:**
1. CONCRETE TO BE 32 MPa CLASS C-2 MEETING THE REQUIREMENTS OF S.P. F-3510 AND PLACED IN ACCORDANCE WITH S.P. F-9040. REFER TO SPECIFICATIONS.
 2. GRANULAR 'A' SHALL MEET THE REQUIREMENTS OF OPSS 1010.
 3. APPROVED NON-WOVEN CLASS 1 GEOTEXTILE AS PER MS-22.15 WHEN WARRANTED BY SOIL CONDITION. SUBJECT TO APPROVAL BY THE LANDSCAPE ARCHITECT.

6 LIGHT DUTY CONCRETE PAVING

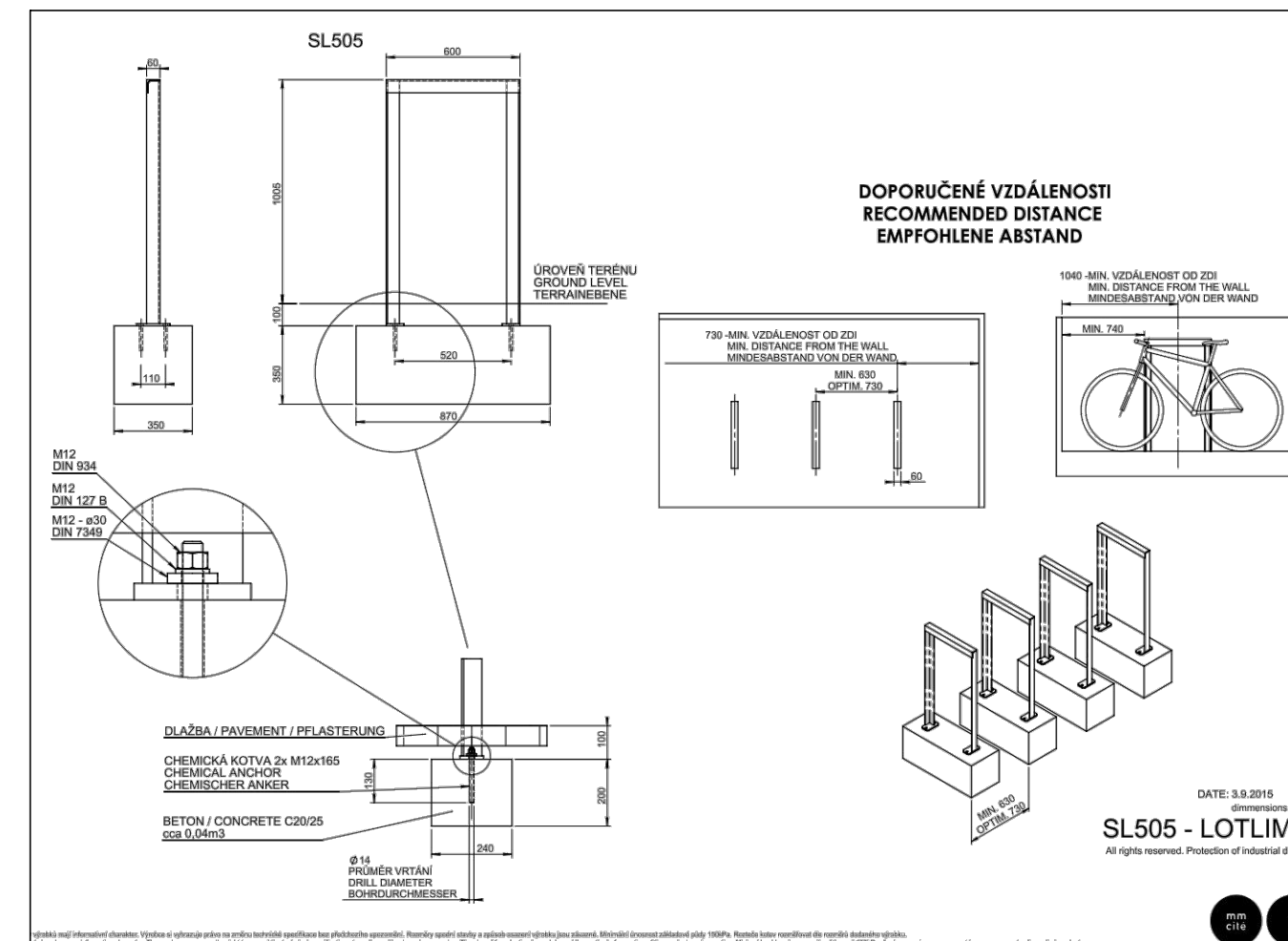
N.T.S.



- NOTES:**
1. FILTER FABRIC SHALL BE APPROVED NON-WOVEN CLASS 1 GEOTEXTILE AS PER MS-22.15 WHEN WARRANTED BY SOIL CONDITION. SUBJECT TO APPROVAL BY THE LANDSCAPE ARCHITECT
 2. GRANULAR 'A' SHALL MEET THE REQUIREMENTS OF OPSS 1010.

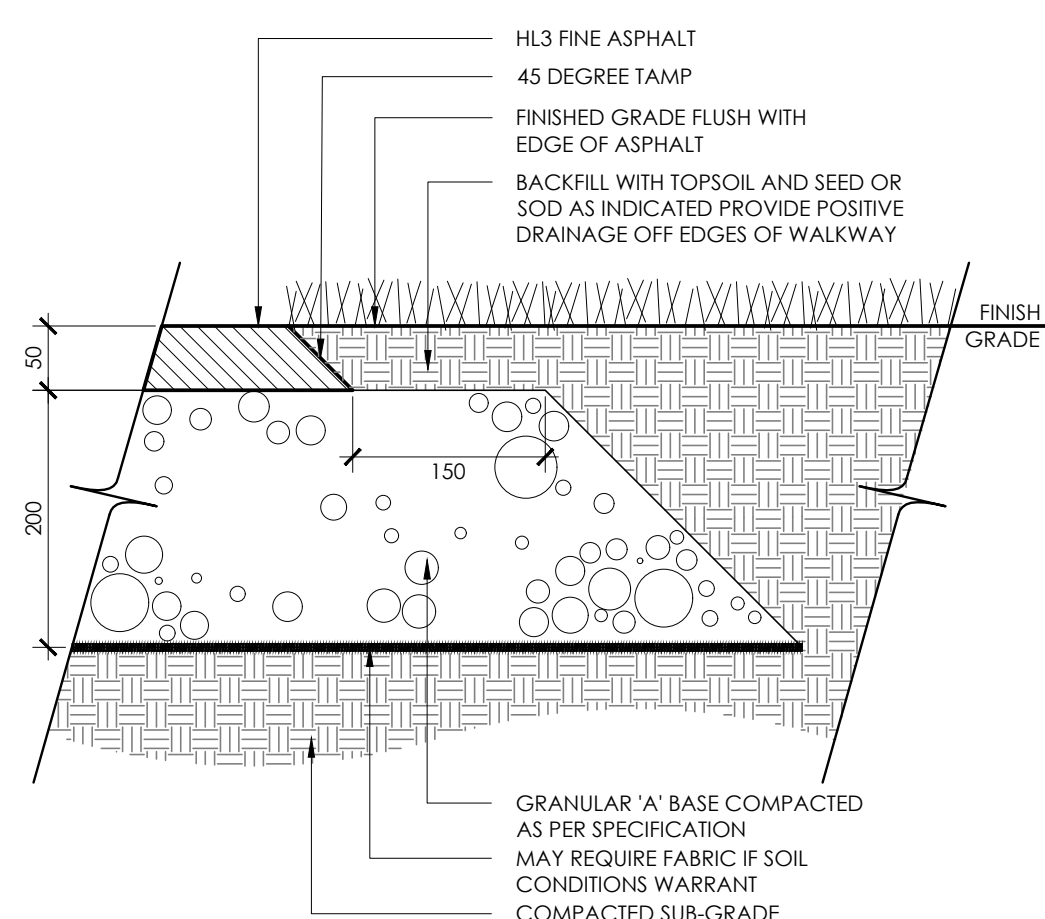
7 BENCH MOUNTING ON CONCRETE BASE

N.T.S.



8 BIKE RACK - ON CIP CONCRETE

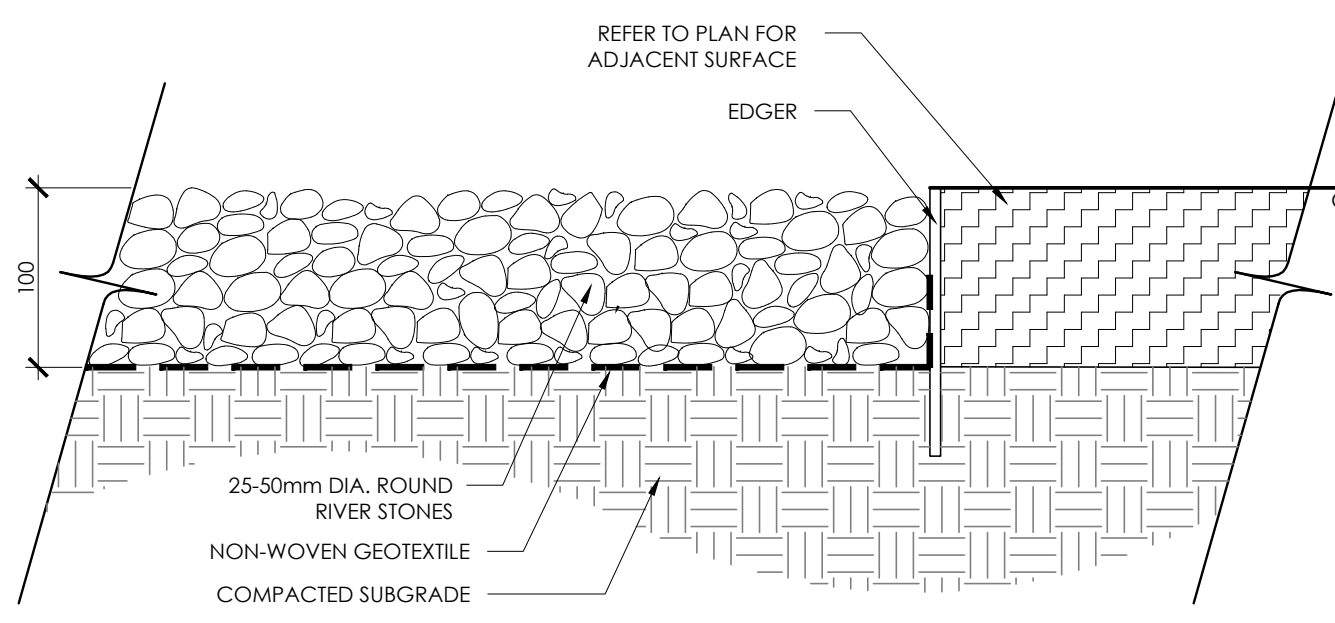
N.T.S.



- NOTES:**
1. CROSS SLOPE PATH 1-2% IN DIRECTION OF NATURAL DRAINAGE TO PROVIDE POSITIVE DRAINAGE OF ALL WALKS.
 2. FILTER FABRIC SHALL BE APPROVED NON-WOVEN CLASS 1 GEOTEXTILE AS PER MS-22.15 WHEN WARRANTED BY SOIL CONDITION. SUBJECT TO APPROVAL BY THE LANDSCAPE ARCHITECT.
 3. ALL DISTURBED AREAS ALONG ASPHALT WALKWAYS SHALL BE SODDED OVER 150mm TOPSOIL FOR A MINIMUM DISTANCE OF 900mm.
 4. GRANULAR 'A' SHALL MEET THE REQUIREMENTS OF OPSS 1010.

9 LIGHT DUTY ASPHALT PAVING

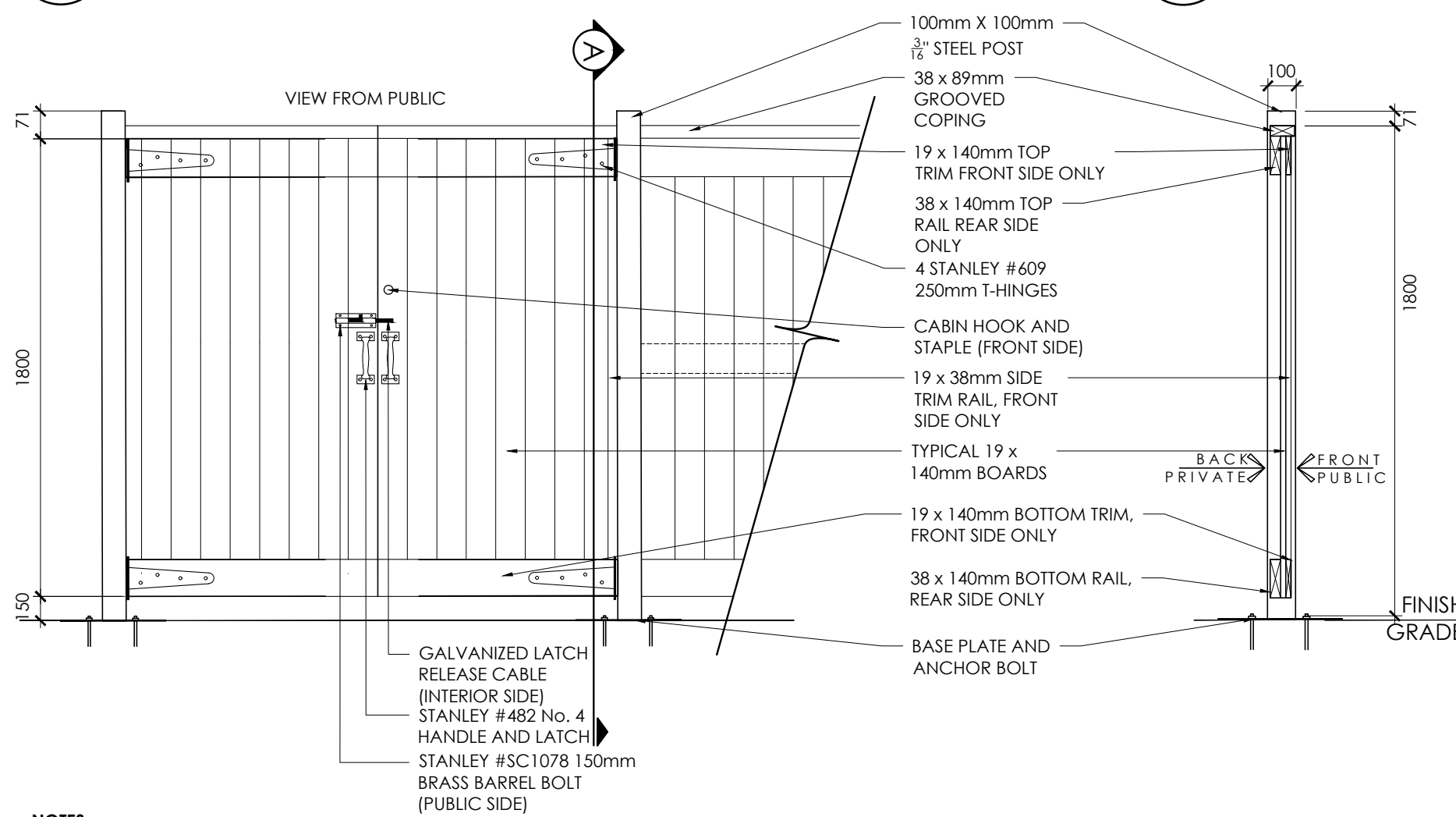
N.T.S.



- NOTES:**
1. APPROVED NON-WOVEN CLASS 1 GEOTEXTILE AS PER MS-22.15 WHEN WARRANTED BY SOIL CONDITION. SUBJECT TO APPROVAL BY THE LANDSCAPE ARCHITECT.
 2. RETAIN RIVERSTONES WITH RIGID EDGE RESTRAINTS AS PER SPECIFICATIONS.

10 RIVER STONE PAVING

N.T.S.



- NOTES:**
1. ALL WOOD COMPONENTS SHALL BE NO.1 GRADE WESTERN RED CEDAR, EXCEPT FOR THE PRESSURE-TREATED SKIRT RAIL.
 2. ALL WOOD COMPONENTS SHALL BE TREATED WITH 2 COATS OF STAIN. COLOUR TO BE APPROVED BY THE OWNER AND LANDSCAPE ARCHITECT.
 3. USE GALVANIZED FASTENERS AND HARDWARE THROUGHOUT.
 4. ALL HEAVY DUTY GATE HINGES TO BE WELDED STEEL FRAME AND POST.
 5. PROVIDE STAMPED SHOP DRAWINGS FOR CONTRACT ADMINISTRATOR REVIEW AND APPROVAL.
 6. CONCRETE TO BE 35 MPa CLASS C-1 MEETING THE REQUIREMENTS OF S.P. F-3510 AND PLACED IN ACCORDANCE WITH S.P. F-9040. SEE SPECIFICATIONS.
 7. GRANULAR 'A' SHALL MEET THE REQUIREMENTS OF OPSS 1010.
 8. APPROVED NON-WOVEN CLASS 1 GEOTEXTILE AS PER MS-22.15 WHEN WARRANTED BY SOIL CONDITION. SUBJECT TO APPROVAL BY THE LANDSCAPE ARCHITECT.

11 2.0m Ht. PEDESTRIAN ACCESS GATE AND FENCE

N.T.S.

Contractor shall check all dimensions on the work and report any discrepancy to the Landscape Architect before proceeding. All drawings and specifications are the property of the Landscape Architect and must not be used for construction until signed by the Landscape Architect.

Key Plan

2	Re-issued for First Submission	FEB 2022
1	Issued for First Submission	NOV 2021
No.	Description	Date
Revision		
City Approval Stamp		

ASSOCIATION OF LANDSCAPE ARCHITECTS
ONTARIO
SILVANO TARDIA
MEMBER

NAK
design strategies

1285 WELLINGTON STREET WEST, OTTAWA, ON K1Y 3A8 CANADA
T 613.237.2345 F 613.237.6423 NAKDESIGNSTRATEGIES.COM
Project

HALF MOON BAY SOUTH
PHASE 8

Title	
Date	OCT.29/2021
Scale	N.T.S.
Drawn by	TY
Checked by	DTM
Job No.	20-210
Sheet	
D-01	