

Copyright Reserved

The Contractor shall verify and be responsible for all dimensions. DO NOT scale the drawing - any errors or omissions shall be reported to Stantec without delay.
The Copyrights to all designs and drawings are the property of Stantec. Reproduction or use for any purpose other than that authorized by Stantec is forbidden.

Legend

- ORIGINAL GROUND ELEVATION
- PROPOSED LOT CORNER ELEVATION
- EXISTING ELEVATION AT LOT CORNER
- FLOW DIRECTION AND GRADE
- FINISHED FIRST FLOOR ELEVATION
- UNDERSIDE OF FOOTING ELEVATION
- TOP OF FOUNDATION WALL ELEVATION
- ENGINEERED FILL REQUIRED
- TERRACING 3:1 SLOPE MAXIMUM (UNLESS OTHERWISE SHOWN)
- DIRECTION OF PROPOSED OVERLAND FLOW
- PROPOSED VALVE BOX
- PROPOSED VALVE CHAMBER
- PROPOSED FIRE HYDRANT
- PROPOSED SANITARY SEWER MANHOLE
- PROPOSED STORM SEWER MANHOLE
- PROPOSED CATCHBASIN MANHOLE
- PROPOSED CATCHBASIN
- PROPOSED DEPRESSED CURB LOCATION
- PROPOSED BARRIER CURB
- PROPOSED COMMUNITY MAILBOX LOCATIONS
- HEAVY DUTY ASPHALT
- OVERLAND SPILL LOCATION

Notes

1. SITE PLAN PREPARED BY KORSAK URBAN PLANNING, DATED DECEMBER 02, 2021
2. TOPOGRAPHIC SURVEY SUPPLIED BY STANTEC GEOMATICS LTD. PROJECT NO. 16163882-111. PART OF LOTS 1 AND 2 CONVEYANCE 3 (OTTAWA FRONT), GEORGIAN TOWNSHIP OF GLOUCESTER, CITY OF OTTAWA.
3. TIE IN ELEVATIONS ON OBSIDIAN STREET BY DSEL LTD. THE RIDGE SUBDIVISION PHASE 1 DETAILED DESIGN, DATED SEP 25, 2020
4. ALL TERRACE FLAT ROOF EAVES TROUGH TO OUTLET TO INTERNAL SURFACE PARKING AREAS.
5. MAINTENANCE HOLES LOCATED IN PONDING AREAS SHALL HAVE WATER TIGHT FRAME AND COVERS AS PER CITY STANDARD S24, S24.1 AND S25.

HEAVY DUTY ASPHALT

40mm HLB OR SUPERPAVE 12.5 ASPHALTIC CONCRETE
50mm HLB OR SUPERPAVE 19.0 ASPHALTIC CONCRETE
150mm OPSS GRANULAR A BASE
400mm OPSS GRANULAR B TYPE II

LIGHT DUTY AREAS

50mm HLB OR SUPERPAVE 12.5 ASPHALTIC CONCRETE
150 OPSS GRANULAR A BASE
300 OPSS GRANULAR B TYPE II

RISER COUNT AND DIMENSION - STACKED TOWNS

3R = 0.45m TO 3R = 0.54m
4R = 0.60m TO 4R = 0.72m
5R = 0.75m TO 5R = 0.90m
6R = 0.90m TO 6R = 1.08m
7R = 1.05m TO 7R = 1.26m
8R = 1.20m TO 8R = 1.44m
9R = 1.35m TO 9R = 1.62m

| Revision | By | Appd. | YY.MM.DD |
|----------|----|-------|----------|
| 1 | AJ | SG | 22.01.14 |
| 0 | AJ | SG | 21.11.23 |

| File Name: | MJS | SG | MJS | 21.04.29 |
|--------------|------|-------|------|----------|
| 164041657.DB | Dwn. | Chkd. | Dgn. | YY.MM.DD |

Permit-Seal

Client/Project

Mattamy Homes

HMB PHASE 8

OTTAWA, ON

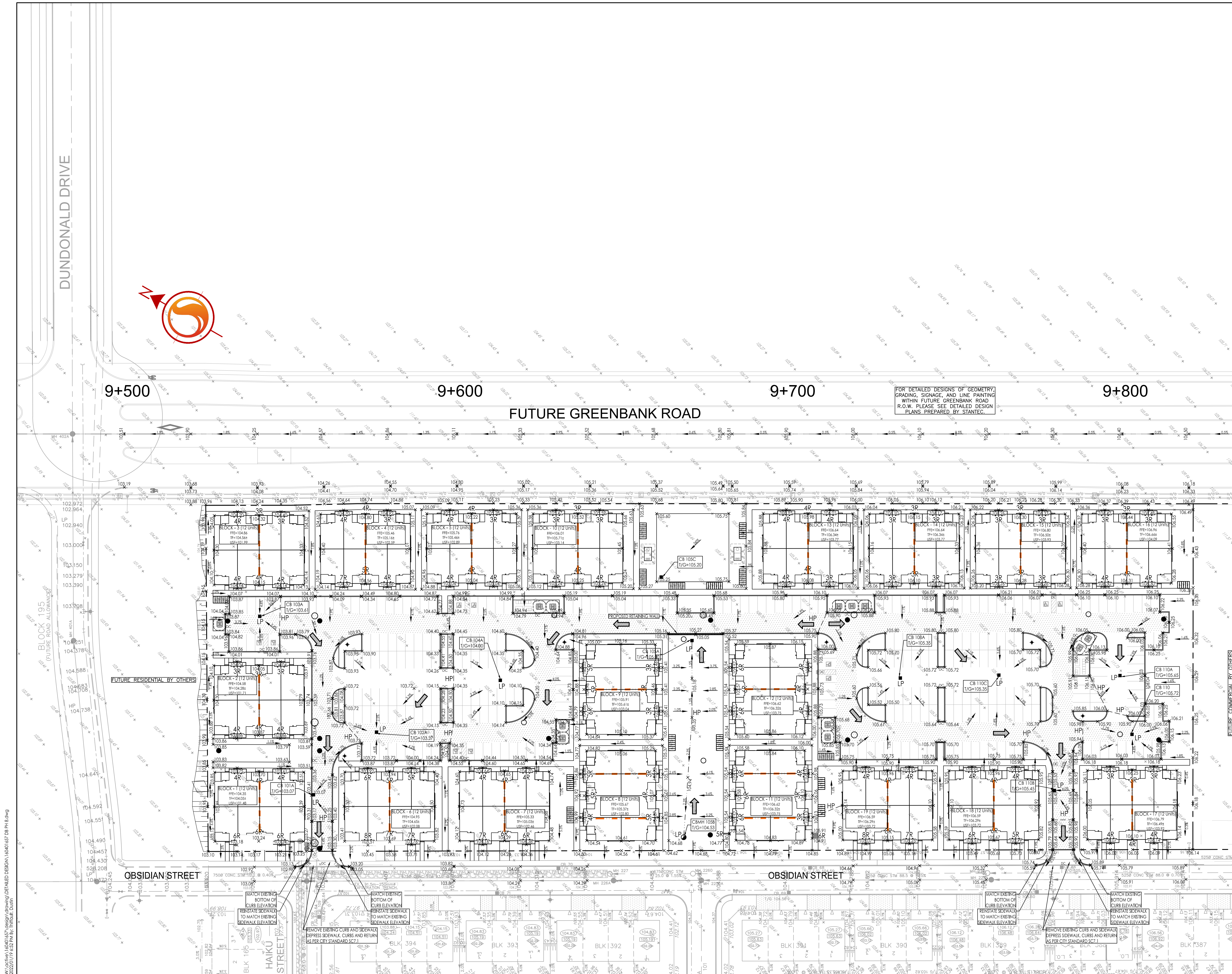
Title

GRADING PLAN

Project No. 164041657 Scale 0 5 15 25m

Drawing No. 1:500 Sheet 1 of 1 Revision

GP-1 4 of 8 1



W:\active\164041657\design\drawing\164041657.DB PH 8.DWG
 ZZZZ\1717 5:52 PM by: Initial.Dwg
 ORIGINAL SHEET - ARCH D