

5A **ASTC 'CR' UPG.**
REV. S577
 NIGHTSHADE

6A **ASTA 'CR'**
REV. S578
 BUTTERCUP

7A **ASTA 'CR'**
REV. S579
 BUTTERCUP

8A **ASTC 'CR'**
REV. S580
 NIGHTSHADE

12B **ASTD 'CR' UPG.**
REV. S584
 POPPY

11B **ASTB 'CR'**
REV. S583
 FOGGLOVE

10B **ASTB 'CR'**
REV. S582
 FOGGLOVE

9B **ASTD 'CR'**
REV. S581
 POPPY

1A **ASTC 'CR'**
REV. S573
 NIGHTSHADE

2A **ASTA 'CR'**
REV. S574
 BUTTERCUP

3A **ASTA 'CR'**
REV. S575
 BUTTERCUP

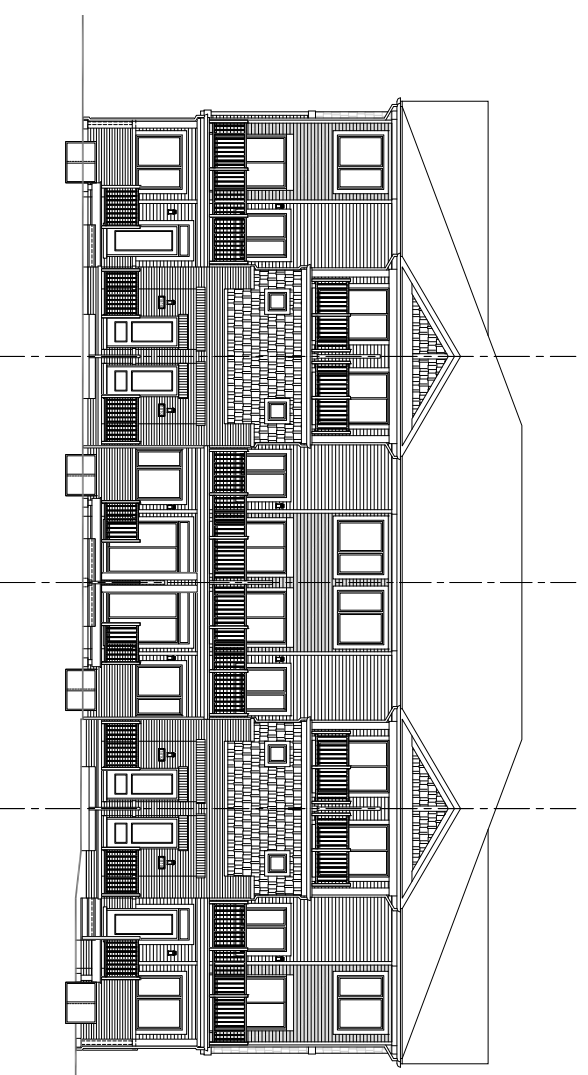
4A **ASTC 'CR' UPG.**
REV. S576
 NIGHTSHADE

9B **ASTD 'CR'**
REV. S581
 POPPY

10B **ASTB 'CR'**
REV. S582
 FOGGLOVE

11B **ASTB 'CR'**
REV. S583
 FOGGLOVE

12B **ASTD 'CR' UPG.**
REV. S584
 POPPY



1A **ASTC 'CR'**
REV. S573
 NIGHTSHADE

2A **ASTA 'CR'**
REV. S574
 BUTTERCUP

3A **ASTA 'CR'**
REV. S575
 BUTTERCUP

4A **ASTC 'CR' UPG.**
REV. S576
 NIGHTSHADE

9B **ASTD 'CR'**
REV. S581
 POPPY

10B **ASTB 'CR'**
REV. S582
 FOGGLOVE

11B **ASTB 'CR'**
REV. S583
 FOGGLOVE

12B **ASTD 'CR' UPG.**
REV. S584
 POPPY

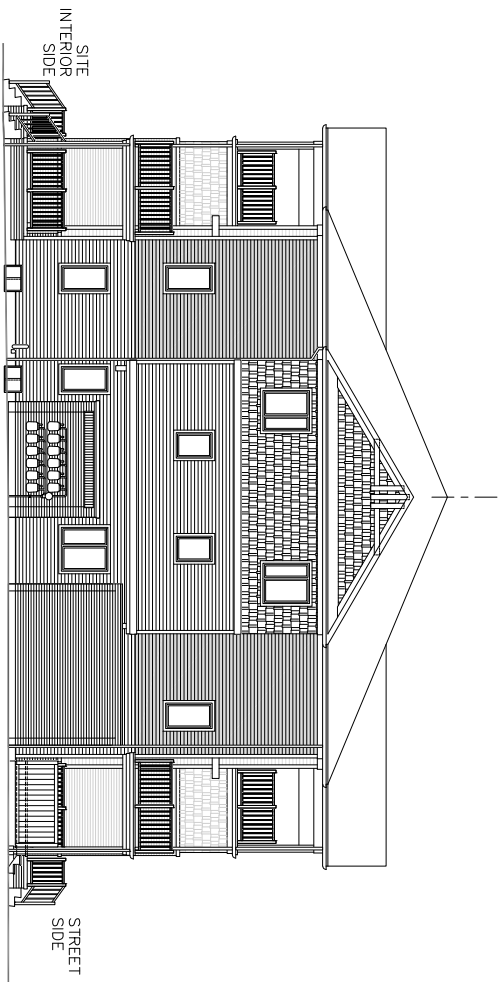
(LOCATION AND NUMBER OF HYDRO & GAS METERS TO BE VERIFIED AND CONFIRMED PRIOR TO CONSTRUCTION)

Specifications, terms and conditions are subject to change without notice. Note that plans and room dimensions may vary according to elevation. Plan may be built as the mirror image. "Quiet wall" (where shown) means a wall in which additional insulation has been installed. This will assist in reducing, but not eliminating, ambient sound from adjoining rooms and mechanical systems. The extent of the reduction will vary depending upon various factors including, without limitation, the presence and extent of mechanical systems located in the wall. Drawing is not to scale and all dimensions are approximate. Actual usable floor space may vary from the stated floor area. E.&O.E. Copyright 2012 – Mattamy Homes Limited. **September 26, 2018**



Block Plan
 7

| | | | |
|-----------|---|---------|--|
| Phase: | 8 | Lot No: | |
| Initials: | | | |
| Date: | | | |

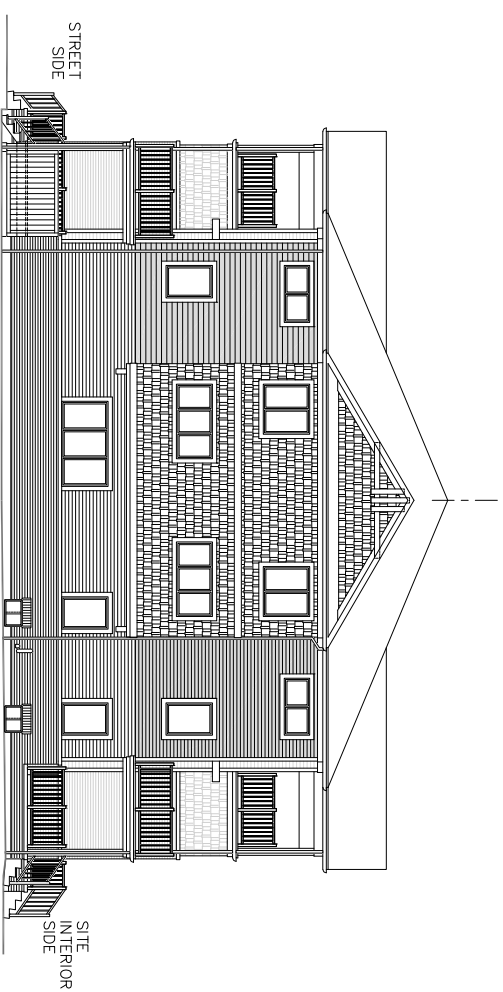


8A **ASTC 'CR'**
NIGHTSHADE
REV.
8580

9B **ASTD 'CR'**
POPPY
REV.
8581

1A **ASTC 'CR'**
NIGHTSHADE
REV.
8573

RIGHT SIDE ELEVATION (NORTH)



4A **ASTC 'CR' UPG.**
NIGHTSHADE
REV.
8576

12B **ASTD 'CR' UPG.**
POPPY
REV.
8584

5A **ASTC 'CR' UPG.**
NIGHTSHADE
REV.
8577

LEFT SIDE ELEVATION (SOUTH)

(LOCATION AND NUMBER OF HYDRO & GAS METERS TO BE VERIFIED AND CONFIRMED PRIOR TO CONSTRUCTION)

Specifications, terms and conditions are subject to change without notice. Note that plans and room dimensions may vary according to elevation. Plan may be built as the mirror image. "Quiet wall" (where shown) means a wall in which additional insulation has been installed. This will assist in reducing, but not eliminating, ambient sound from adjoining rooms and mechanical systems. The extent of the reduction will vary depending upon various factors including, without limitation, the presence and extent of mechanical systems located in the wall. Drawing is not to scale and all dimensions are approximate. Actual usable floor space may vary from the stated floor area. E.&O.E. Copyright 2012 – Mattamy Homes Limited. **September 26, 2018**



Block Plan
7

Phase: Lot No:

8

Initials:

Date: