

SCHEDULE			
PART	LOT	CON	INST/PIN
1	PART OF 8	3	04592-0037(LT)

I REQUIRE THIS PLAN TO BE DEPOSITED UNDER THE LAND TITLES ACT.

DATE APRIL 25, 2019

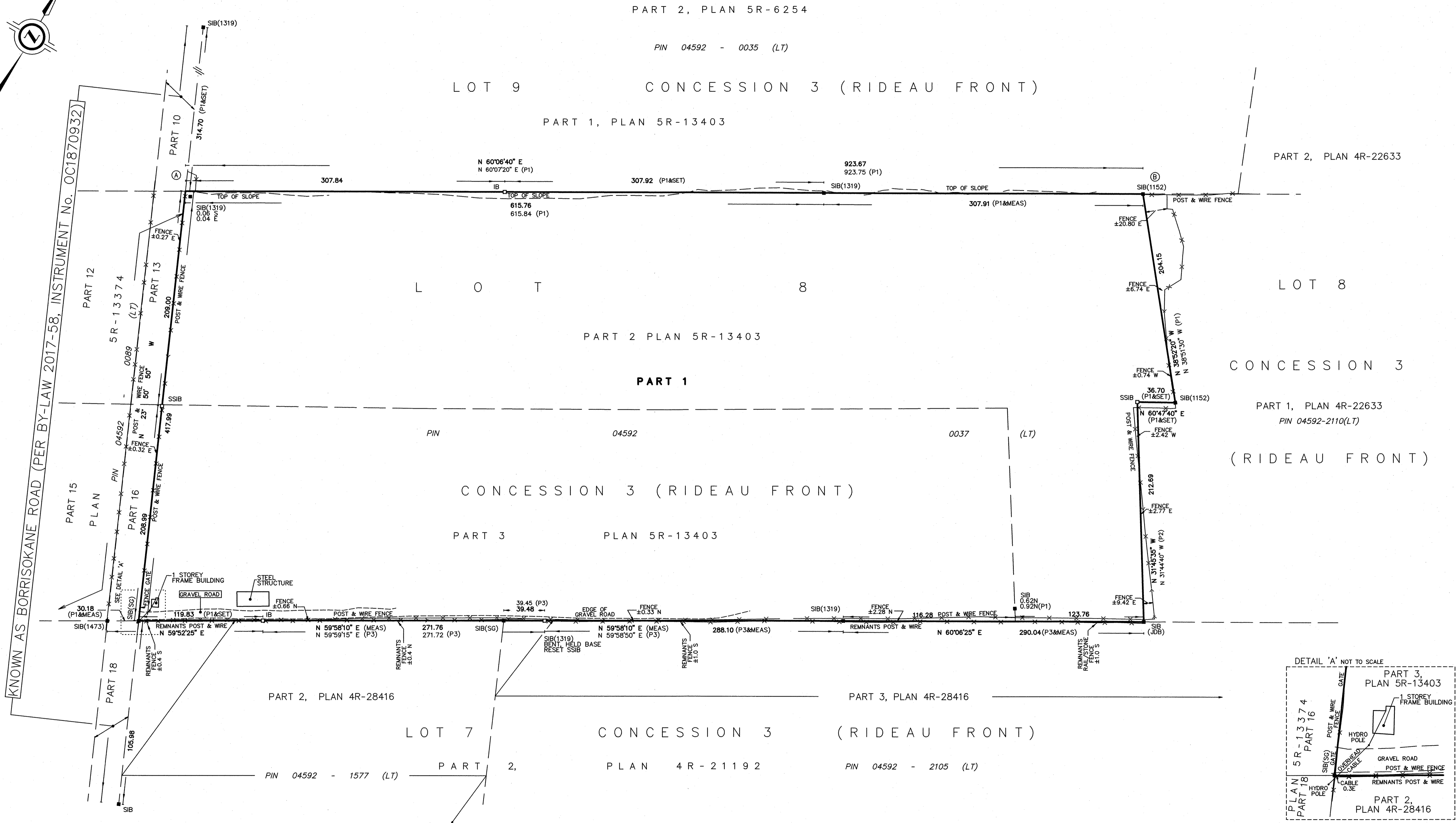
C.M. Fox
C.M. FOX
ONTARIO LAND SURVEYOR

PLAN 4R-32110

RECEIVED AND DEPOSITED

DATE July 24/19

J. Mason
REPRESENTATIVE FOR THE LAND REGISTRAR FOR THE LAND TITLES DIVISION OF OTTAWA-CARLETON (No 4)



PLAN OF SURVEY OF
**PART OF LOT 8
CONCESSION 3 (RIDEAU FRONT)
CITY OF OTTAWA**

SCALE 1:2000

J.D. BARNES LIMITED

METRIC DISTANCES AND/OR COORDINATES SHOWN ON THIS PLAN ARE IN METRES AND CAN BE CONVERTED TO FEET BY DIVIDING BY 0.3048.

NOTES

BEARINGS ARE MTM GRID, DERIVED FROM OBSERVED REFERENCE POINTS A AND B, BY REAL TIME NETWORK (RTN) OBSERVATIONS, MTM ZONE 09, NAD83 (CSRS) (2010.0).

DISTANCES ARE GROUND AND CAN BE CONVERTED TO GRID BY MULTIPLYING BY THE COMBINED SCALE FACTOR OF 0.999926.

INTEGRATION DATA		
OBSERVED REFERENCE POINTS (ORPs): MTM ZONE 09, NAD83 (CSRS) (2010.0). COORDINATES TO URBAN ACCURACY PER SECTION 14 (2) OF O.REG 216/10.		
POINT ID	EASTING	NORTHING
ORP (A)	363353.55	5011073.00
ORP (B)	364154.28	5011533.26

COORDINATES CANNOT, IN THEMSELVES, BE USED TO RE-ESTABLISH CORNERS OR BOUNDARIES SHOWN ON THIS PLAN.

- LEGEND**
- DENOTES SURVEY MONUMENT FOUND
 - DENOTES SURVEY MONUMENT SET
 - SIB DENOTES STANDARD IRON BAR
 - IB DENOTES IRON BAR
 - MEAS DENOTES MEASURED
 - JDB DENOTES J.D. BARNES LIMITED
 - P1 DENOTES 5R-13403
 - P2 DENOTES 4R-22633
 - P3 DENOTES 4R-28416
 - 1319 DENOTES WEBSTER & SIMMONDS SURVEYING LTD.
 - 1152 DENOTES J.E. KIHIL, O.L.S.
 - SG DENOTES STANTEC GEOMATICS LTD.

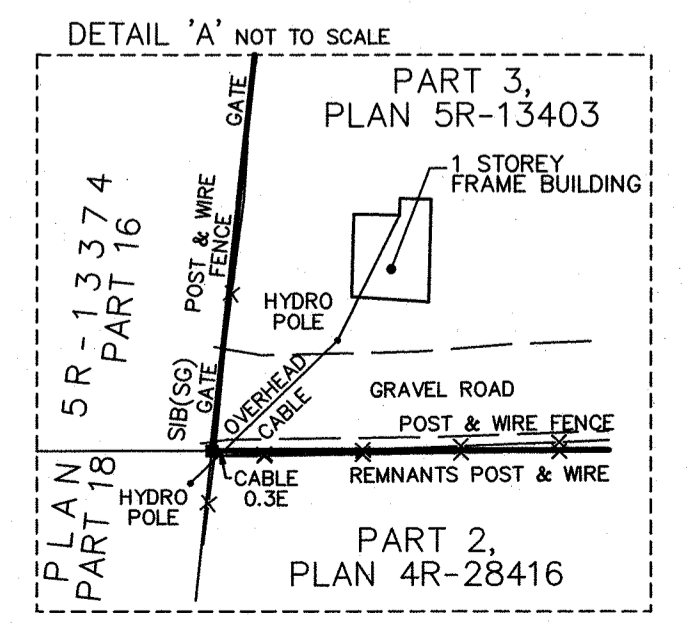
SURVEYOR'S CERTIFICATE

I CERTIFY THAT:

- THIS SURVEY AND PLAN ARE CORRECT AND IN ACCORDANCE WITH THE SURVEYS ACT, THE SURVEYORS ACT AND THE LAND TITLES ACT AND THE REGULATIONS MADE UNDER THEM.
- THE SURVEY WAS COMPLETED ON APRIL 18, 2019.

APRIL 25 2019
DATE

C.M. Fox
C.M. FOX
ONTARIO LAND SURVEYOR



J.D. BARNES LIMITED SURVEYING MAPPING GIS

LAND INFORMATION SPECIALISTS
2430 DON REID DRIVE, SUITE 204, OTTAWA, ON K1H 1E1
T: (613) 731-7244 F: (613) 731-8955 www.jdbarnes.com

DRAWN BY: EM	CHECKED BY: CF	REFERENCE NO.: 18-10-145-00
		DATE: APRIL 24, 2019

FILE: G:\18-10-145\00\Drawing\First App\18-10-145-00_FirstApp.dgn

PLOTTED: 7/22/2019