

Copyright Reserved
The Contractor shall verify and be responsible for all dimensions. DO NOT scale the drawing - any errors or omissions shall be reported to Stantec without delay.
The Copyrights to all designs and drawings are the property of Stantec. Reproduction or use for any purpose other than that authorized by Stantec is forbidden.

ICD TABLE

Structure	Invert	ICD Type	100yr Head (m)	100yr Flow (L/s)	2yr Head (m)	2yr Flow (L/s)
CB 101A	101.89	IPEX TEMPEST LMF 90	0.99	7.2	0.15	2.7
CB 102A	101.99	IPEX TEMPEST HF 127mm	1.65	40.5	0.70	25.6
CB 103A	102.23	IPEX TEMPEST HF 102mm	1.54	25.2	1.21	22.3
CB 104A	102.66	IPEX TEMPEST HF 154mm	1.68	59.9	0.94	44.0
STM 111	101.58	IPEX TEMPEST HF 127mm	1.91	43.6	0.32	16.4
CB 105A	103.82	IPEX TEMPEST LMF 105	1.46	11.8	0.35	5.8
CB 108A	103.97	IPEX TEMPEST HF 108mm	1.58	28.7	0.88	21.2
CB 110A	104.27	IPEX TEMPEST HF 127mm	1.50	38.4	0.57	22.9
CB 110B	104.05	IPEX TEMPEST LMF 90	1.56	9.0	1.01	7.2
CB 110C	103.97	IPEX TEMPEST HF 108mm	1.60	28.9	0.90	21.4
CB 110D	104.34	IPEX TEMPEST HF 102mm	1.49	24.8	0.56	14.8

SEWER AND WATERMAIN CROSSING TABLE

CROSSING	STM INV	STM OBY	SAN INV	SAN OBY	WTR TOP	WTR BTH	NOTES
△ 99.28	99.76	99.76	100.62	100.62	101.30	101.10	
△ 99.30	99.76	100.62	100.62	101.30	101.10	101.10	
△ 99.74	100.04	100.73	100.93	101.68	101.43	101.43	DEFLECT W/M OVER STORM SANITARY SEWER AS PER W25.2 / W22
△ 99.81	100.34	100.84	101.04	101.79	101.54	101.54	DEFLECT W/M OVER STORM & SANITARY SEWER AS PER W25.2 / W22
△ 99.82	100.35	101.02	101.22				
△ 101.55	102.08	103.03	103.23				
△ 101.56	102.08	102.66	102.86	103.61	103.36	103.36	DEFLECT W/M OVER STORM & SANITARY SEWER AS PER W25.2 / W22
△ 102.11	102.56	103.12	103.32	104.07	103.82	103.82	DEFLECT W/M OVER STORM & SANITARY SEWER AS PER W25.2 / W22
△ 101.29	101.59	101.85	102.05	102.93	102.68	102.68	
△ 101.29	101.59	101.85	102.05	102.89	102.64	102.64	

250mmØ WATERMAIN 'A'

STATION	FINISHED GRADE	TOP OF W/M	ITEM
0+000	102.95	100.55	EXISTING TOP OF PIPE
0+004.0	103.21	100.70	45° HORIZONTAL BEND
0+011.8	103.16	100.70	45° HORIZONTAL BEND
0+013.9	103.22	100.820	250mmØ VALVE & CHAMBER @ PL
0+020.0	103.34	100.940	TOP OF PIPE
0+023.0	103.34	100.940	250mmØ WATER VALVE
0+041.1	103.71	101.310	250mmØ x 200mmØ TEE
0+042.4	103.70	101.300	150mmØ FIRE HYDRANT TEE
0+045.2	103.69	101.290	250mmØ x 200mmØ TEE
0+047.9	103.68	101.880	45° VERTICAL BEND. DEFLECT WTR OVER SAN AS PER W25.2 AND W22
0+052.7	103.67	101.480	45° VERTICAL BEND. DEFLECT WTR OVER SAN AS PER W25.2 AND W22
0+060.0	103.72	101.320	TOP OF PIPE
0+074.2	103.84	101.440	250mmØ WATER VALVE
0+076.1	103.85	101.450	150mmØ FIRE HYDRANT TEE
0+080.2	103.92	101.520	250mmØ x 250mmØ TEE

200mmØ - 250mmØ WATERMAIN 'B'

STATION	FINISHED GRADE	TOP OF W/M	ITEM
0+000	104.57	102.170	200mmØ CAP AND THRUST BLOCK
0+020.0	104.83	101.430	45° HORIZONTAL BEND
0+022.0	103.85	101.450	250mmØ x 200mmØ REDUCER VALVE
0+027.8	103.87	101.790	45° VERTICAL BEND. DEFLECT WTR OVER SAN AS PER W25.2 AND W22
0+029.3	103.90	101.790	45° VERTICAL BEND. DEFLECT WTR OVER SAN AS PER W25.2 AND W22
0+032.3	103.92	101.520	250mmØ x 250mmØ TEE
0+040.0	103.74	101.540	TOP OF PIPE
0+040.0	104.33	101.930	TOP OF PIPE
0+080.0	104.60	102.200	TOP OF PIPE
0+096.4	104.76	102.360	250mmØ WATER VALVE
0+101.0	104.81	102.410	150mmØ FIRE HYDRANT TEE
0+120.0	105.02	102.620	TOP OF PIPE
0+140.0	105.26	102.860	TOP OF PIPE
0+147.9	105.38	102.980	250mmØ x 200mmØ TEE
0+152.9	105.38	103.620	45° VERTICAL BEND. DEFLECT WTR OVER SAN AS PER W25.2 AND W22
0+160.0	105.54	103.140	TOP OF PIPE
0+172.1	105.70	103.300	250mmØ WATER VALVE
0+179.9	105.78	103.380	150mmØ FIRE HYDRANT TEE
0+183.1	105.80	103.420	250mmØ x 200mmØ TEE
0+200.0	105.81	103.410	TOP OF PIPE
0+220.0	105.82	103.420	TOP OF PIPE
0+241.53	105.81	103.410	150mmØ FIRE HYDRANT TEE
0+247.6	105.88	103.480	250mmØ WATER VALVE
0+253.1	105.05	102.650	250mmØ x 200mmØ TEE
0+257.1	105.99	103.590	250mmØ x 200mmØ REDUCER VALVE
0+259.1	106.00	103.600	200mmØ WATER VALVE

200mmØ WATERMAIN 'C'

STATION	FINISHED GRADE	TOP OF W/M	ITEM
0+280.0	105.99	103.610	200mmØ CAP AND THRUST BLOCK
0+281.0	106.01	103.610	200mmØ WATER VALVE
0+300.0	106.20	103.800	CONNECT INTO EX. 200mmØ W/M STUB
0+002.3	106.23	103.830	45° HORIZONTAL BEND
0+004.3	105.98	103.580	250mmØ x 200mmØ REDUCER VALVE
0+011.1	106.33	103.930	TOP OF PIPE
0+020.9	106.23	103.830	45° HORIZONTAL BEND
0+030.9	106.14	103.740	45° HORIZONTAL BEND
0+040.0	106.87	103.470	TOP OF PIPE
0+041.1	105.90	103.500	250mmØ WATER VALVE
0+054.1	106.00	103.600	150mmØ FIRE HYDRANT TEE
0+058.4	105.84	103.440	250mmØ x 250mmØ TEE
0+060.0	105.80	103.400	TOP OF PIPE
0+061.4	105.76	103.360	250mmØ x 200mmØ REDUCER VALVE
0+080.0	105.72	103.320	TOP OF PIPE
0+100.0	105.72	103.320	TOP OF PIPE
0+120.0	105.72	103.320	200mmØ WATER VALVE
0+125.9	105.72	103.320	45° HORIZONTAL BEND
0+128.8	105.86	103.460	45° HORIZONTAL BEND
0+140.0	105.67	103.270	TOP OF PIPE
0+160.0	105.73	103.330	200mmØ WATER VALVE
0+164.0	105.80	103.400	200mmØ x 300mmØ TEE

250mmØ WATERMAIN 'D'

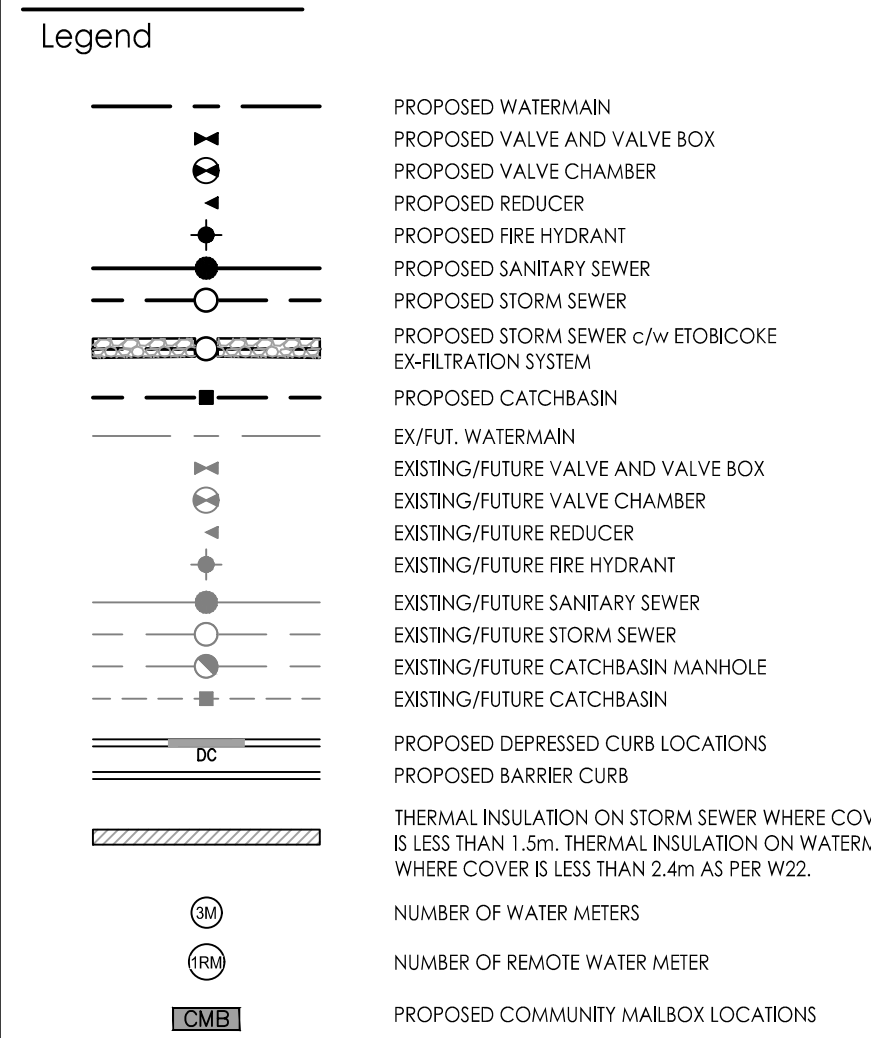
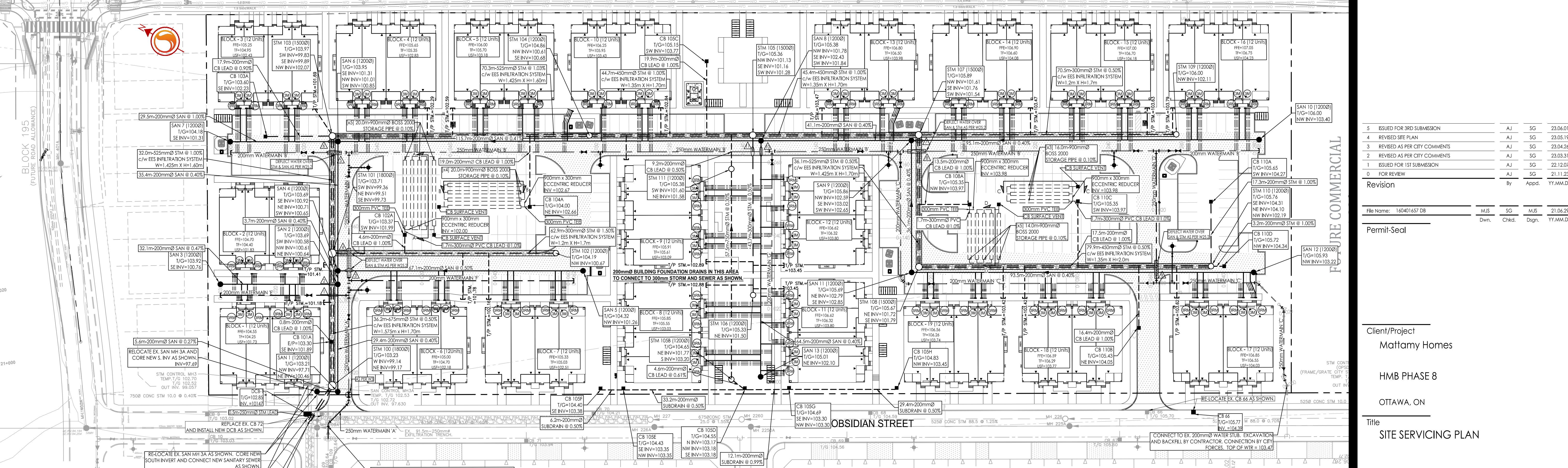
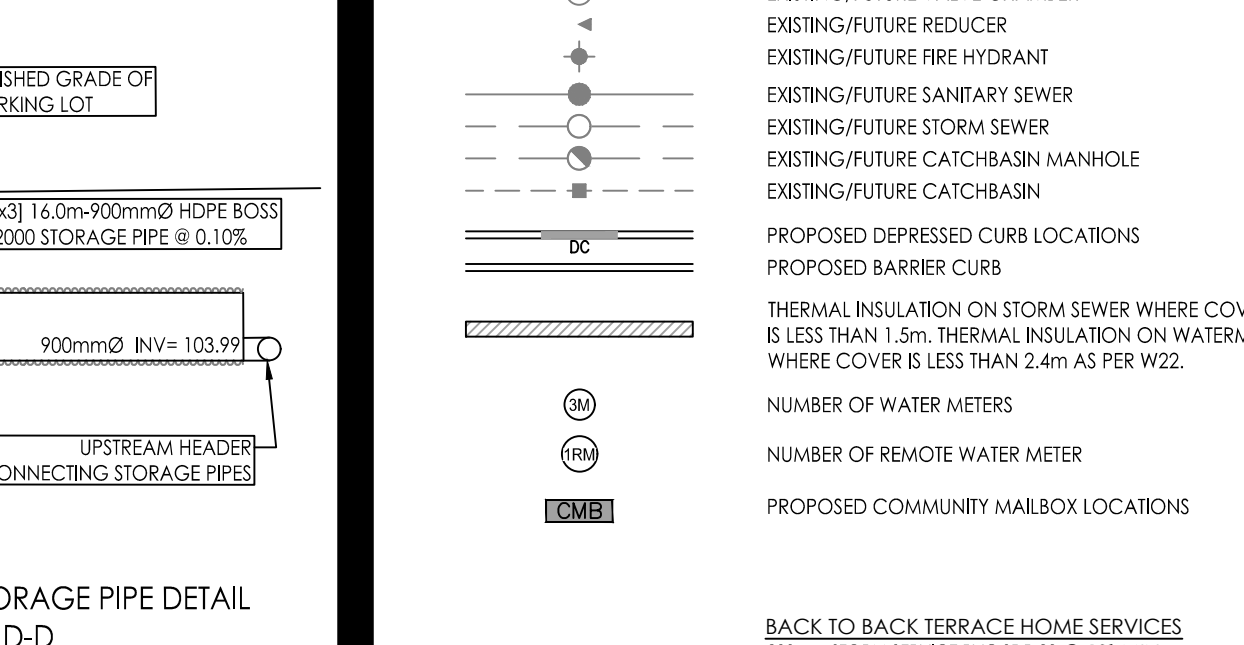
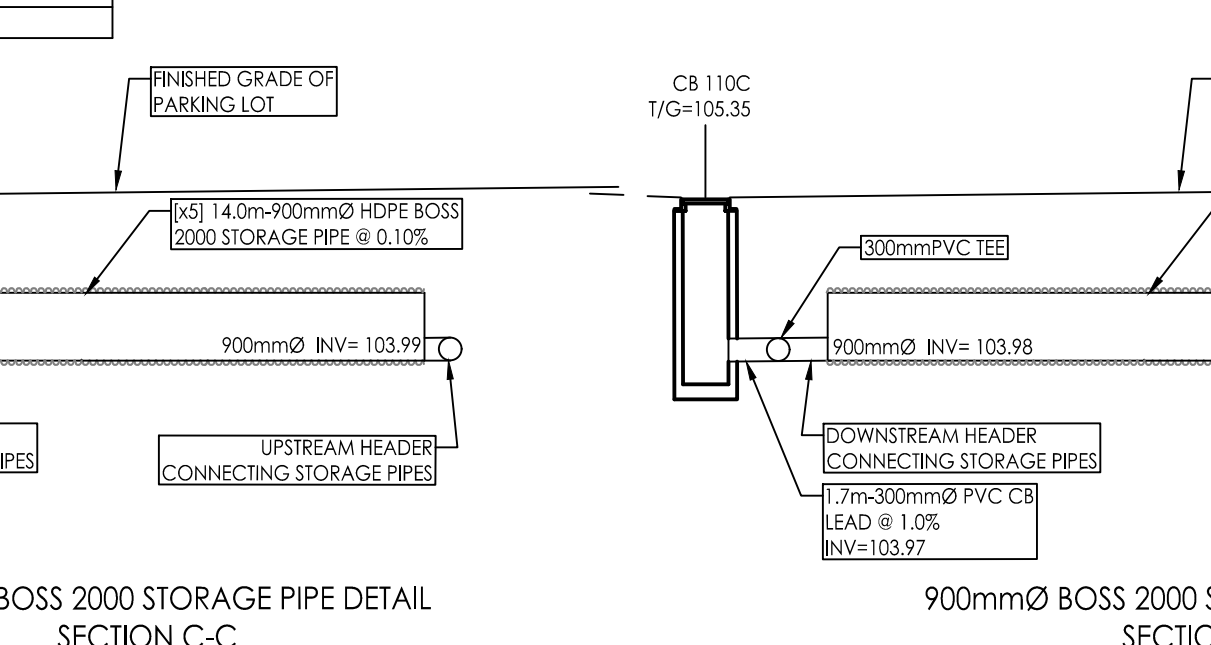
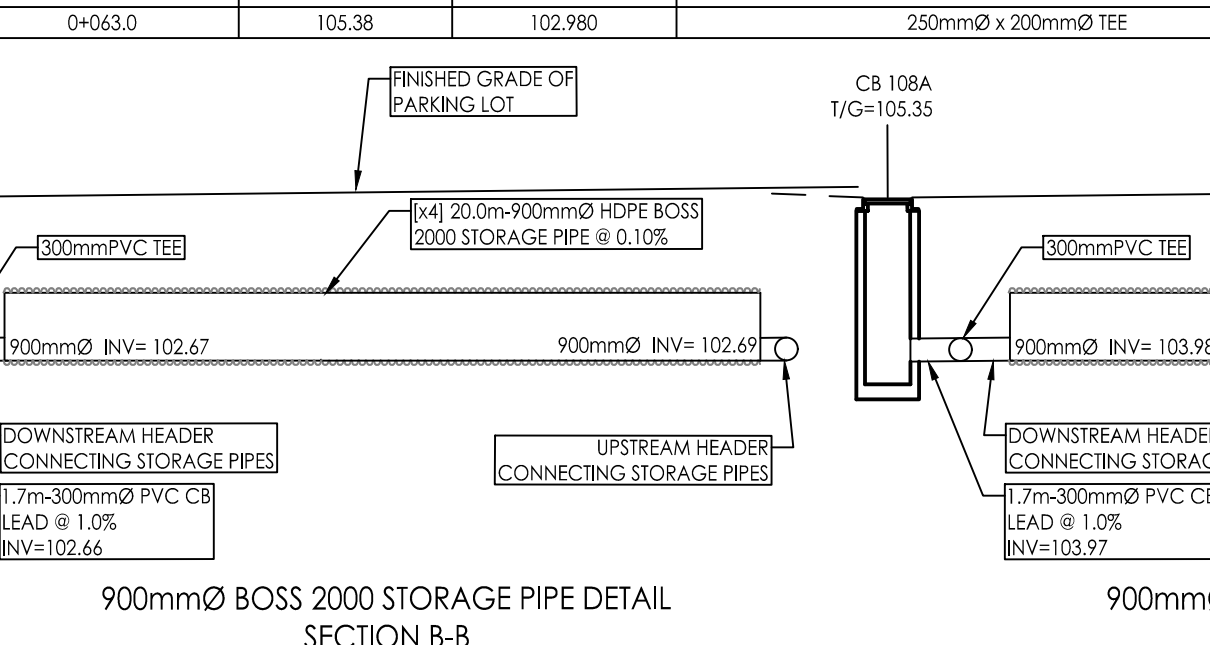
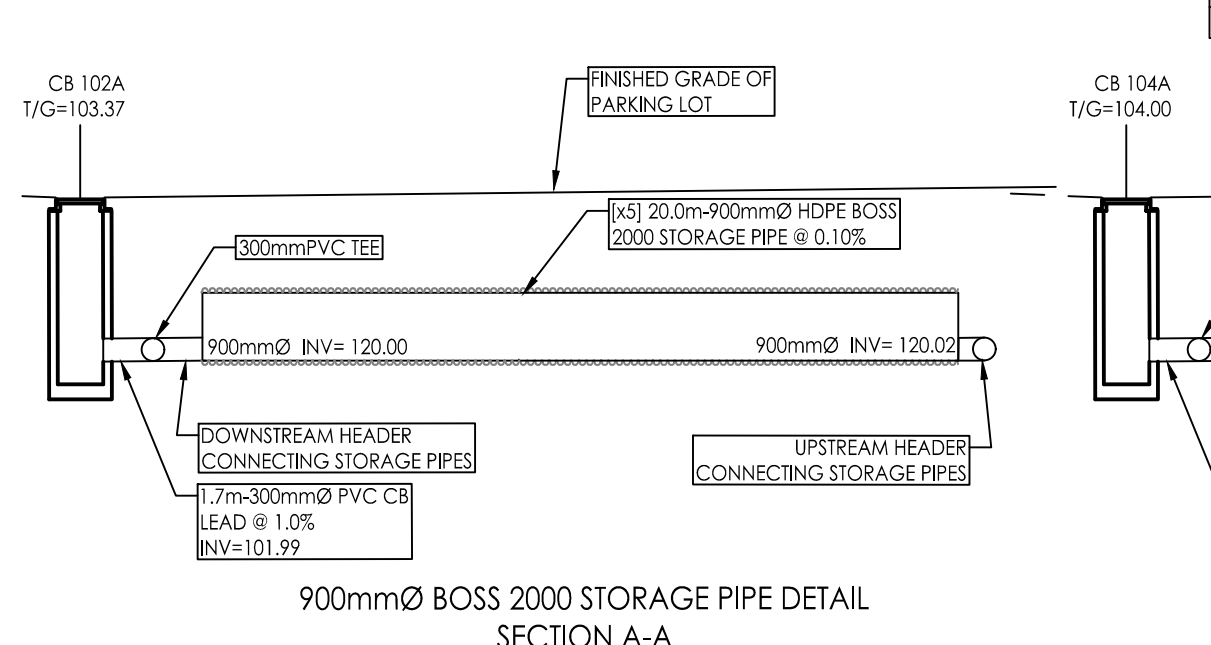
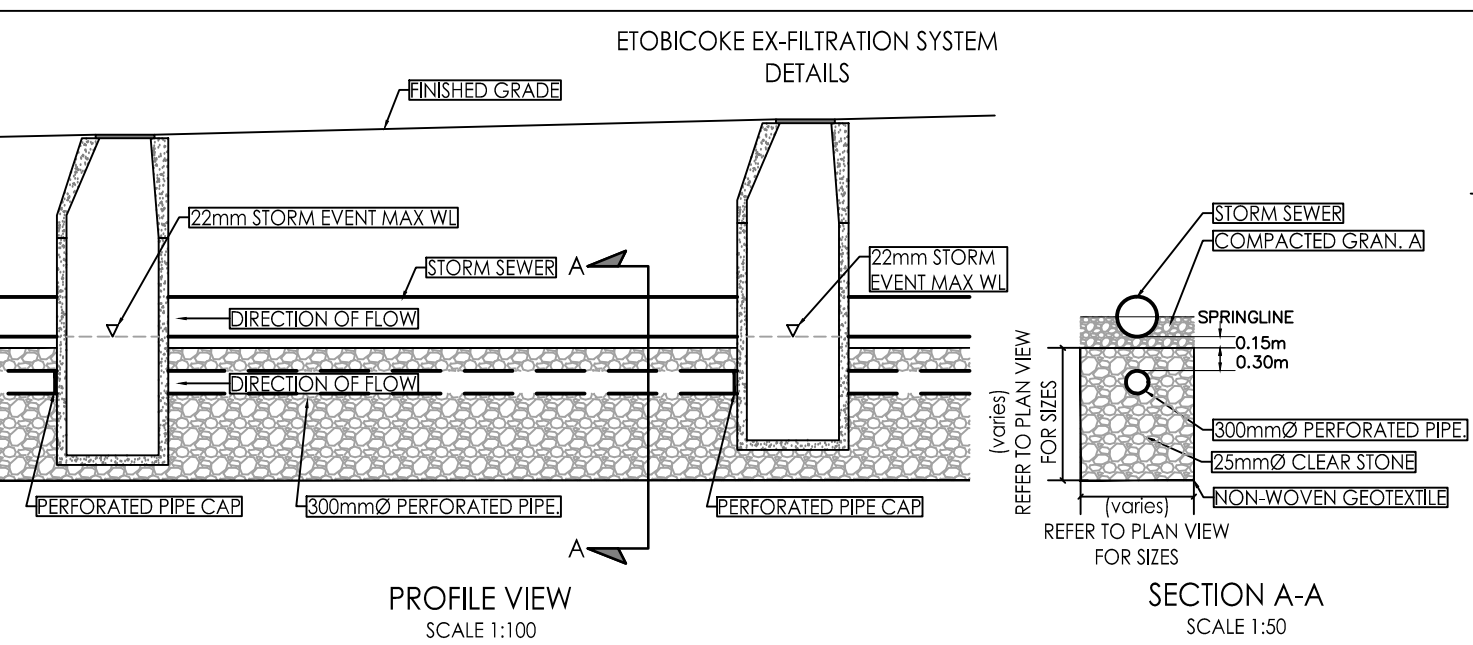
STATION	FINISHED GRADE	TOP OF W/M	ITEM
0+000	105.84	103.440	250mmØ x 250mmØ TEE
0+002.9	105.83	104.070	45° VERTICAL BEND. DEFLECT WTR OVER SAN AS PER W25.2 AND W22
0+020.0	105.83	103.430	TOP OF PIPE
0+036.0	105.95	103.550	250mmØ x 250mmØ TEE

200mmØ WATERMAIN 'E'

STATION	FINISHED GRADE	TOP OF W/M	ITEM
0+000	103.71	101.310	250mmØ x 200mmØ TEE
0+010.8	103.80	101.400	200mmØ WATER VALVE
0+020.0	103.82	101.420	TOP OF PIPE
0+035.1	103.94	101.540	200mmØ CAP AND THRUST BLOCK

200mmØ WATERMAIN 'F'

STATION	FINISHED GRADE	TOP OF W/M	ITEM
0+000	103.69	101.290	250mmØ x 200mmØ TEE
0+004.2	103.66	101.260	200mmØ WATER VALVE
0+020.0	103.87	101.470	TOP OF PIPE
0+040.0	104.31	101.910	TOP OF PIPE
0+060.0	104.40	102.000	TOP OF PIPE
0+062.0	104.41	102.010	200mmØ CAP AND THRUST BLOCK



BACK TO BACK TERRACE HOME SERVICES

200mm STORM SERVICE PVC SDR 26 @ 1% MIN
150mm SANITARY SERVICE PVC SDR 26 @ 1% MIN
19mm PB TUBING WATER SERVICE c/w CURB STOP AND SERVICE POST

Notes

1. MAINTENANCE HOLES LOCATED IN PONDING AREAS SHALL HAVE WATER TIGHT FRAME AND COVERS AS PER CITY STANDARD S24, S24.1 AND S25.

Revision

No.	Description	AJ	SG	Date
5	ISSUED FOR 3RD SUBMISSION	AJ	SG	23.06.01
4	REVISED SITE PLAN	AJ	SG	23.05.19
3	REVISED AS PER CITY COMMENTS	AJ	SG	23.04.26
2	REVISED AS PER CITY COMMENTS	AJ	SG	23.03.31
1	ISSUED FOR 1ST SUBMISSION	AJ	SG	21.12.07
0	FOR REVIEW	AJ	SG	21.11.23

Permit-Seal

File Name:	16401657.DB	MJS	SG	MJS	21.06.29
		Dwn.	Chkd.	Dgn.	YY.MM.DD

Client/Project
Mattamy Homes

HMB PHASE 8

OTTAWA, ON

Title
SITE SERVICING PLAN