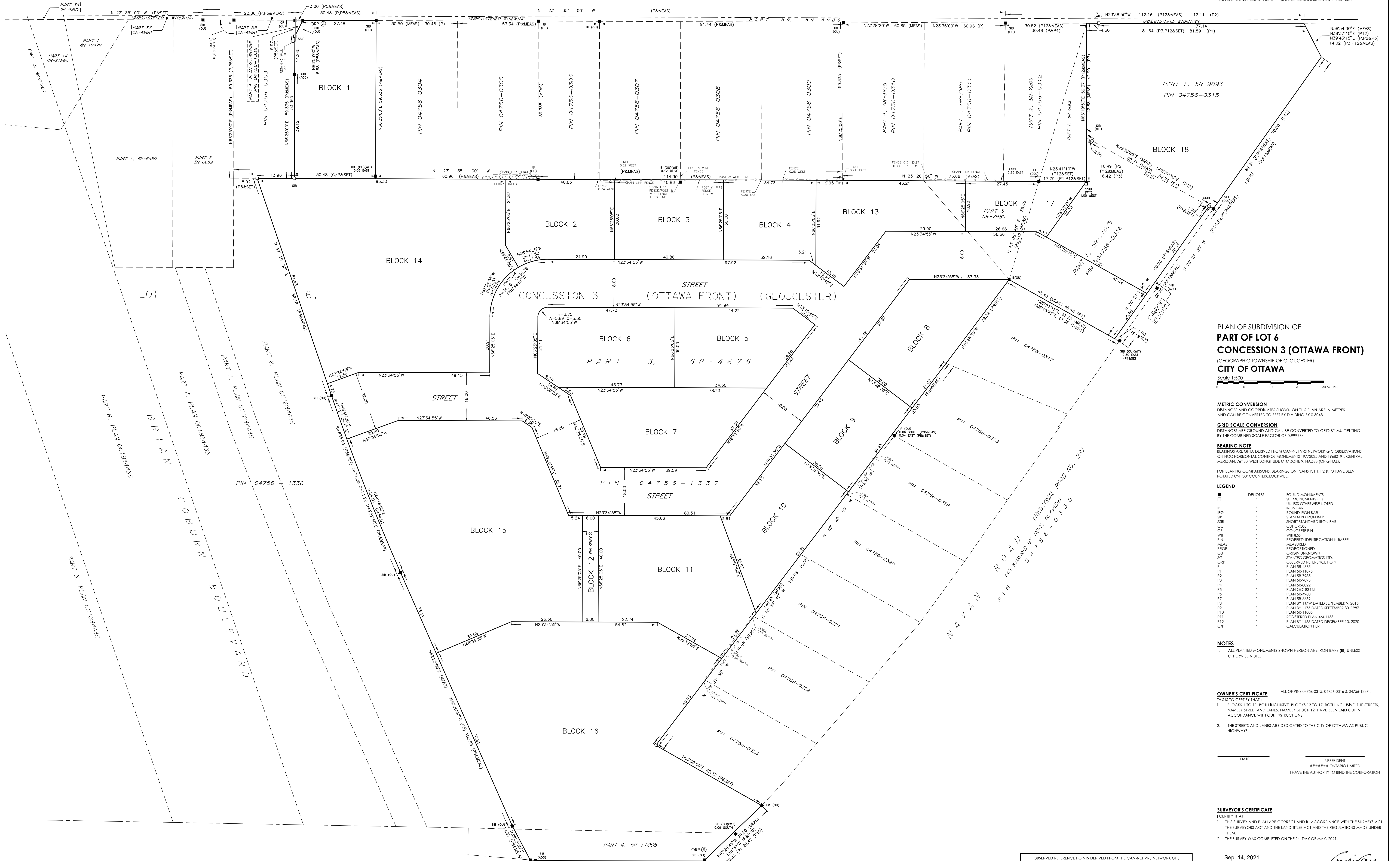


14 September 2021 8:38 AM

APPROVED UNDER SECTION 51 OF THE PLANNING ACT BY THE CITY OF OTTAWA.
THIS _____ DAY OF _____ 2021.
STEPHEN WILLIS, MCIP, RPP, GENERAL MANAGER
PLANNING, INFRASTRUCTURE AND ECONOMIC DEVELOPMENT DEPARTMENT, CITY OF OTTAWA

PLAN 4M-
I HEREBY CERTIFY THAT THIS PLAN 4M-_____ IS REGISTERED IN THE LAND REGISTRY OFFICE FOR THE LAND TITLES DIVISION OF OTTAWA-CARLETON (No.4) AT _____ O'CLOCK ON THE _____ DAY OF _____ 2021 AND ENTERED IN THE REGISTER FOR P.L.N.'s 04756-0315, 04756-0316 & 04756-1337 AND THE REQUIRED CONSENTS ARE REGISTERED AS PLAN DOCUMENT NUMBER OC-_____
REPRESENTATIVE FOR LAND REGISTRAR

PAGE ROAD
ROAD ALLOWANCE BETWEEN LOTS 5 & 6 (AS WIDENED)
PIN 04404-0409



THIS PLAN COMPRISES OF ALL OF PINS 04756-0315, 04756-0316 & 04756-1337.

PLAN OF SUBDIVISION OF
**PART OF LOT 6
CONCESSION 3 (OTTAWA FRONT)**
(GEOGRAPHIC TOWNSHIP OF GLOUCESTER)
CITY OF OTTAWA

Scale 1:500
0 5 10 15 20 30 METRES

METRIC CONVERSION
DISTANCES AND COORDINATES SHOWN ON THIS PLAN ARE IN METRES AND CAN BE CONVERTED TO FEET BY DIVIDING BY 0.3048

GRID SCALE CONVERSION
DISTANCES ARE GROUND AND CAN BE CONVERTED TO GRID BY MULTIPLYING BY THE COMBINED SCALE FACTOR OF 0.999964

BEARING NOTE
BEARINGS ARE GRID, DERIVED FROM CAN-NET VRS NETWORK GPS OBSERVATIONS ON NCC HORIZONTAL CONTROL MONUMENTS 1973035 AND 19680191, CENTRAL MERIDIAN, 76° 30' WEST LONGITUDE NAD83 (ORIGINAL).
FOR BEARING COMPARISONS, BEARINGS ON PLANS P. P1, P2 & P3 HAVE BEEN ROTATED 0°41'30" COUNTERCLOCKWISE.

LEGEND

■	DENOTES	FOUND MONUMENTS
□	DENOTES	SET MONUMENTS (B)
○	DENOTES	UNLESS OTHERWISE NOTED
SB	IRON BAR	IRON BAR
SB	ROUND IRON BAR	ROUND IRON BAR
SB	STANDARD IRON BAR	STANDARD IRON BAR
SB	SHORT STANDARD IRON BAR	SHORT STANDARD IRON BAR
CC	CUT CROSS	CUT CROSS
CF	CONCRETE PIN	CONCRETE PIN
WIT	WITNESS	WITNESS
FIN	PROPERTY IDENTIFICATION NUMBER	PROPERTY IDENTIFICATION NUMBER
MEAS	MEASURED	MEASURED
PROP	PROPORTIONED	PROPORTIONED
CU	ORIGINAL UNKNOWN	ORIGINAL UNKNOWN
SG	STANTEC GEOMATICS LTD.	STANTEC GEOMATICS LTD.
ORP	OBSERVED REFERENCE POINT	OBSERVED REFERENCE POINT
P1	PLAN SR-4675	PLAN SR-4675
P2	PLAN SR-7995	PLAN SR-7995
P3	PLAN SR-8893	PLAN SR-8893
P4	PLAN SR-8822	PLAN SR-8822
P5	PLAN OC18345	PLAN OC18345
P6	PLAN SR-4993	PLAN SR-4993
P7	PLAN SR-6659	PLAN SR-6659
P8	PLAN BY FIRM DATED SEPTEMBER 9, 2015	PLAN BY FIRM DATED SEPTEMBER 9, 2015
P9	PLAN BY 1175 DATED SEPTEMBER 30, 1987	PLAN BY 1175 DATED SEPTEMBER 30, 1987
P10	PLAN SR-11026	PLAN SR-11026
P11	REGISTERED PLAN 4M-1133	REGISTERED PLAN 4M-1133
P12	PLAN BY 1465 DATED DECEMBER 10, 2020	PLAN BY 1465 DATED DECEMBER 10, 2020
CIP	CALCULATION PIN	CALCULATION PIN

NOTES
1. ALL PLANTED MONUMENTS SHOWN HEREON ARE IRON BARS (B) UNLESS OTHERWISE NOTED.

OWNER'S CERTIFICATE ALL OF PINS 04756-0315, 04756-0316 & 04756-1337.

I HEREBY CERTIFY THAT:
1. BLOCKS 1 TO 11, BOTH INCLUSIVE, BLOCKS 13 TO 17, BOTH INCLUSIVE, THE STREETS, NAMELY STREET AND LANES, NAMELY BLOCK 12, HAVE BEEN Laid OUT IN ACCORDANCE WITH OUR INSTRUCTIONS.
2. THE STREETS AND LANES ARE DEDICATED TO THE CITY OF OTTAWA AS PUBLIC HIGHWAYS.

DATE _____ PRESIDENT
ONTARIO LIMITED
I HAVE THE AUTHORITY TO BIND THE CORPORATION

SURVEYOR'S CERTIFICATE
I CERTIFY THAT:
1. THIS SURVEY AND PLAN ARE CORRECT AND IN ACCORDANCE WITH THE SURVEY ACT, THE SURVEYS ACT AND THE LAND TITLES ACT AND THE REGULATIONS MADE UNDER THEM.
2. THE SURVEY WAS COMPLETED ON THE 13 DAY OF MAY, 2021.

DATE: Sep. 14, 2021

Stantec
Stantec Geomatics Ltd.
CANADA LAND SURVEYORS
ONTARIO LAND SURVEYORS
1331 CLIVE AVENUE, SUITE 400
OTTAWA, ONTARIO, K1C 3G4
TEL: 416-724-4500 FAX: 416-722-2799
dgn@stn.com

ORP ID	NORTHING	EASTING
①	933144.68	381482.57
②	9332879.91	381255.06

COORDINATES CANNOT, IN THEMSELVES, BE USED TO RE-ESTABLISH CORNERS OR BOUNDARIES SHOWN ON THIS PLAN.

BLOCK 205
REGISTERED PLAN 4M-1133
PIN 04756-1307