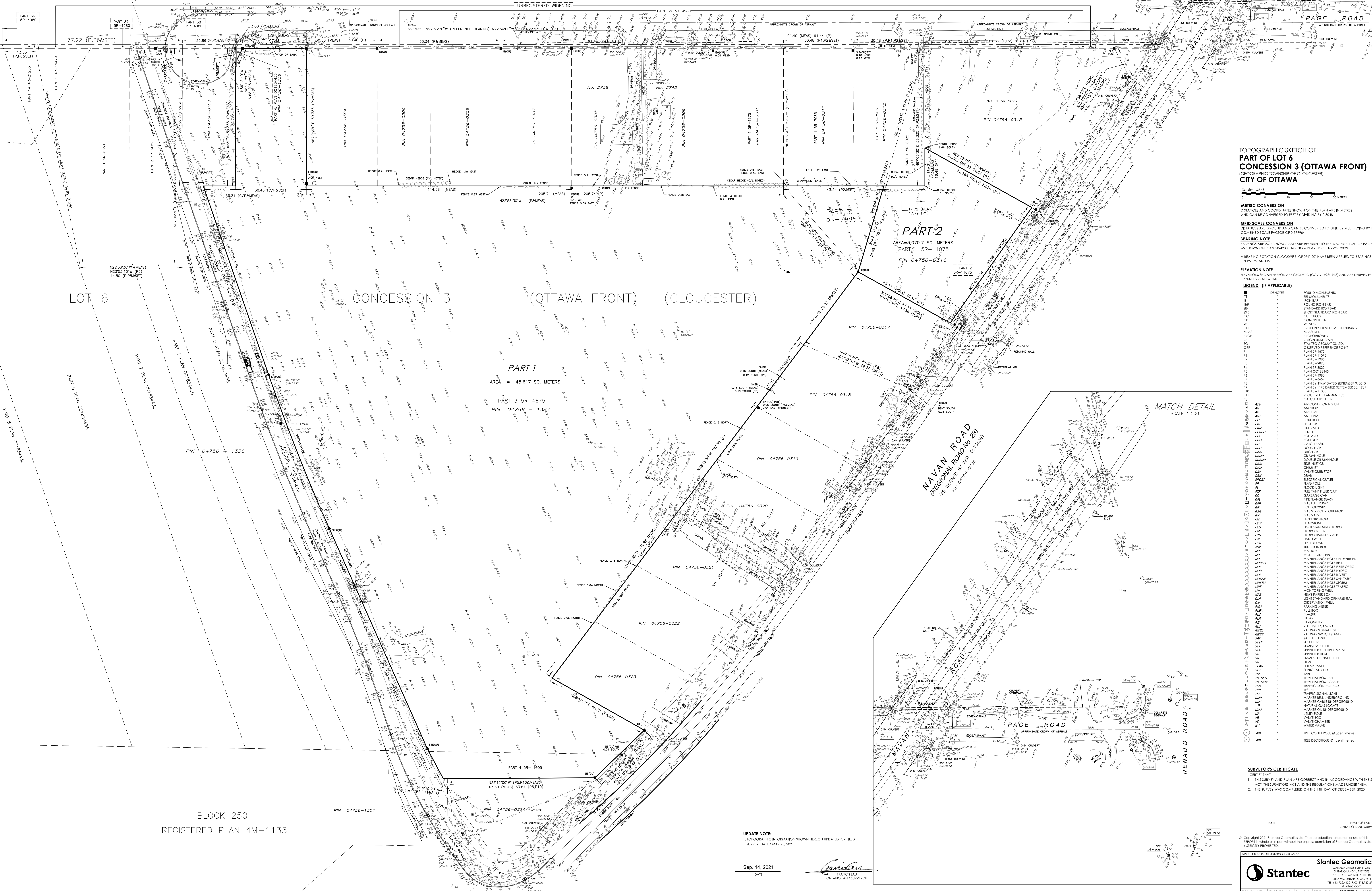


PAGE ROAD
ROAD ALLOWANCE BETWEEN LOTS 5 & 6 (AS WIDENED)
PIN 04404-0409



**TOPOGRAPHIC SKETCH OF
PART OF LOT 6
CONCESSION 3 (OTTAWA FRONT)
(GEOGRAPHIC TOWNSHIP OF GLOUCESTER)
CITY OF OTTAWA**

Scale 1:500

METRIC CONVERSION
DISTANCES AND COORDINATES SHOWN ON THIS PLAN ARE IN METRES AND CAN BE CONVERTED TO FEET BY DIVIDING BY 0.3048

GRID SCALE CONVERSION
DISTANCES ARE GRID AND CAN BE CONVERTED TO METRIC BY MULTIPLYING BY THE COMBINED SCALE FACTOR OF 0.99994

BEARING NOTE
BEARINGS ARE GEODESIC AND ARE REFERRED TO THE WESTERN LIMIT OF PAGE ROAD, AS SHOWN ON PLAN SR-4675, HAVING A BEARING OF N22°33'07.17" W

A BEARING ROTATION CLOCKWISE OF 0°42'11" HAD BEEN APPLIED TO BEARINGS SHOWN ON P. 56, AND P. 7.

ELEVATION NOTE
ELEVATIONS SHOWN HEREON ARE GEODESIC (CGVD-1928/1985) AND ARE DERIVED FROM THE CANADIAN VES NETWORK

LEGEND (IF APPLICABLE)

- | | | | |
|---|-------------------------------|---|--------------------------------|
| ■ | DENOTES | □ | FOUND MONUMENTS |
| ▲ | ANCHOR | ○ | ROUND IRON BAR |
| △ | AR FLUP | ○ | ROUND IRON BAR |
| ☆ | AST | ○ | STANDARD IRON BAR |
| ☆ | BORSHOLE | ○ | SHEET STANDARD IRON BAR |
| ☆ | BRE KACK | ○ | CLUB CROSS |
| ☆ | BENCH | ○ | CONCRETE PIN |
| ☆ | BOLLARD | ○ | WITNESS |
| ☆ | BLOCK | ○ | PROPERTY IDENTIFICATION NUMBER |
| ☆ | CATCH BASIN | ○ | MEASURED |
| ☆ | CHIMNEY | ○ | PROPORTIONED |
| ☆ | CHUTE | ○ | ORIGIN UNKNOWN |
| ☆ | CIR MANHOLE | ○ | STATUTE GEOGRAPHICAL LT. |
| ☆ | DOUBLE CB MANHOLE | ○ | OBSERVED REFERENCE POINT |
| ☆ | SUBSET CB | ○ | PLAN SR-4675 |
| ☆ | CHIMNEY | ○ | PLAN SR-11075 |
| ☆ | VALVE CURB STOP | ○ | PLAN SR-7985 |
| ☆ | ELECTRICAL OUTLET | ○ | PLAN SR-8993 |
| ☆ | DEAN | ○ | PLAN SR-9102 |
| ☆ | FUEL TANK | ○ | PLAN OC-38445 |
| ☆ | FLAG POLE | ○ | PLAN SR-4675 |
| ☆ | FOOD LIGHT | ○ | PLAN SR-4675 |
| ☆ | FUEL TANK FILLER CAP | ○ | PLAN SR-4675 |
| ☆ | CHIMNEY | ○ | PLAN SR-11075 |
| ☆ | PPE FLANGE (GAS) | ○ | REGISTERED PLAN 4M-1133 |
| ☆ | CAST IRON PIPE | ○ | COUCH AND OTHER |
| ☆ | CAST IRON REGULATOR | ○ | |
| ☆ | GAS VALVE | ○ | |
| ☆ | HEADSTONE | ○ | |
| ☆ | HYDRO TRANSDUCER | ○ | |
| ☆ | HYDRO METER | ○ | |
| ☆ | HYDRO TRANSFORMER | ○ | |
| ☆ | HAND WELL | ○ | |
| ☆ | FRS HEADSET | ○ | |
| ☆ | JUNCTION BOX | ○ | |
| ☆ | MANHOLE | ○ | |
| ☆ | MONITORING PIN | ○ | |
| ☆ | MAINTENANCE HOLE UNIDENTIFIED | ○ | |
| ☆ | MAINTENANCE HOLE BELL | ○ | |
| ☆ | MAINTENANCE HOLE BBS OPTIC | ○ | |
| ☆ | MAINTENANCE HOLE HYDRO | ○ | |
| ☆ | MAINTENANCE HOLE SANITARY | ○ | |
| ☆ | MAINTENANCE HOLE STON | ○ | |
| ☆ | MAINTENANCE HOLE TRAFFIC | ○ | |
| ☆ | MAINTENANCE HOLE WEL | ○ | |
| ☆ | NEWS PAPER BOX | ○ | |
| ☆ | LIGHT STANDARD ORNAMENTAL | ○ | |
| ☆ | OBSERVATION WELL | ○ | |
| ☆ | PARKING METER | ○ | |
| ☆ | PULL BOX | ○ | |
| ☆ | REGUL | ○ | |
| ☆ | REGULATOR | ○ | |
| ☆ | REGULATOR | ○ | |
| ☆ | REGULATOR | ○ | |
| ☆ | REGULATOR | ○ | |
| ☆ | REGULATOR | ○ | |
| ☆ | REGULATOR | ○ | |
| ☆ | REGULATOR | ○ | |
| ☆ | REGULATOR | ○ | |
| ☆ | REGULATOR | ○ | |
| ☆ | REGULATOR | ○ | |
| ☆ | REGULATOR | ○ | |

SURVEYOR'S CERTIFICATE

I CERTIFY THAT:
1. THE SURVEY AND PLAN ARE CORRECT AND IN ACCORDANCE WITH THE SURVEY ACT, THE SURVEYORS ACT AND THE REGULATIONS MADE UNDER THEM.
2. THE SURVEY WAS COMPLETED ON THE 14th DAY OF DECEMBER, 2021.

DATE: _____
FRANÇOIS LAU
CHIEF LAND SURVEYOR

Copyright © 2021 Stantec Geomatics Ltd. The reproduction, alteration or use of this document in whole or in part without the express permission of Stantec Geomatics Ltd. is STRICTLY PROHIBITED.

UIC: 000000
DRAWN: ME
CHECKED: KJ
DATE: Sep. 14, 2021

UPDATE NOTE:
1. TOPOGRAPHIC INFORMATION SHOWN HEREON UPDATED PER FIELD SURVEY DATED MAY 23, 2021.

Sup. 14, 2021
DATE
Francis Lau
CHIEF LAND SURVEYOR