

**DRAFT PLAN OF SUBDIVISION OF
PART OF LOT 24
CONCESSION 11**
Geographic Township of Goulbourn
CITY OF OTTAWA
Prepared by Annis, O'Sullivan, Vollebek Ltd.

Scale 1 : 400
Metric
DISTANCES SHOWN ON THIS PLAN ARE IN METRES AND
CAN BE CONVERTED TO FEET BY DIVIDING BY 0.3048

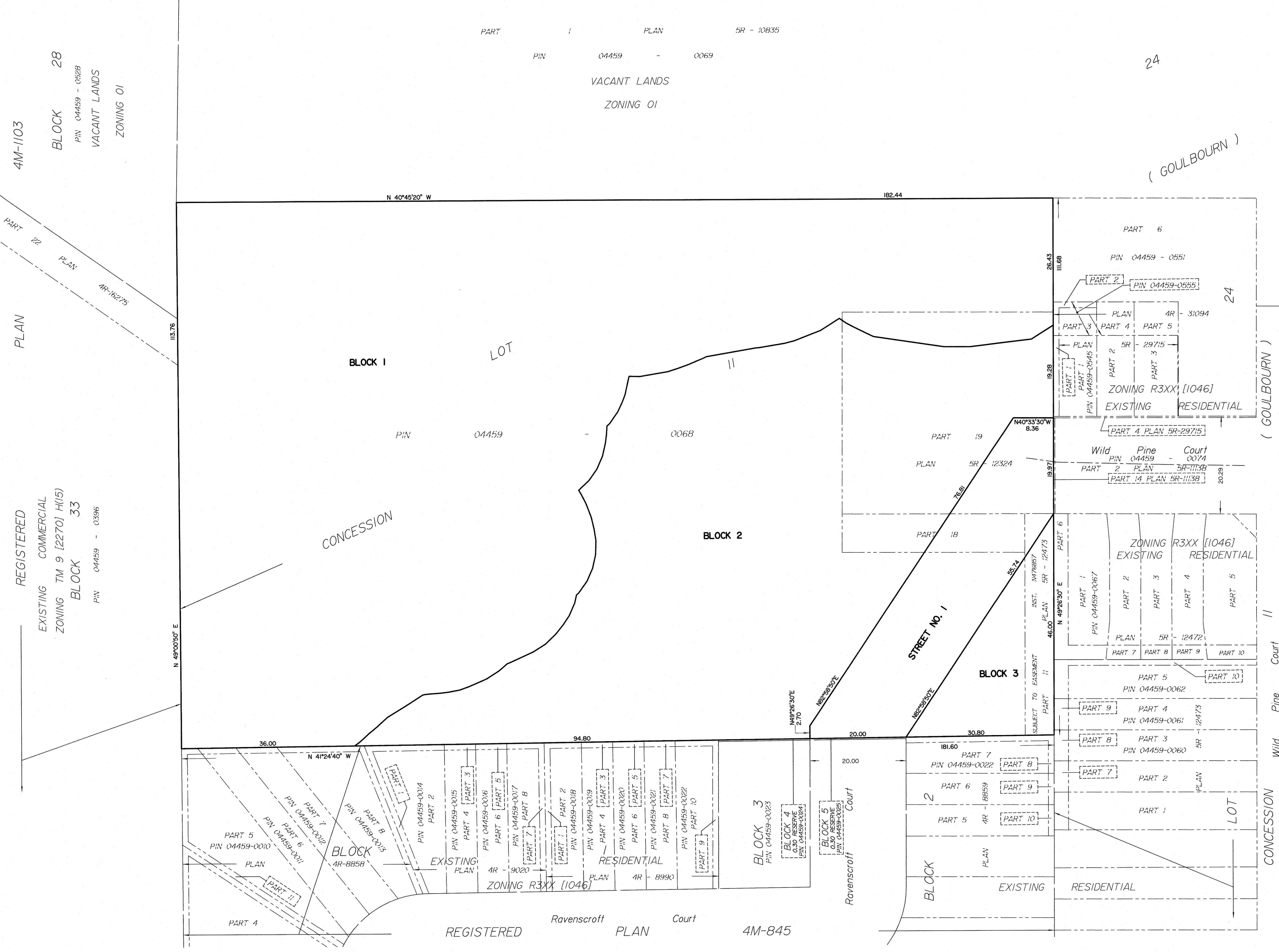
SURVEYOR'S CERTIFICATE
I CERTIFY THAT:
The boundaries of the lands to be subdivided and their relationship to
adjoining lands have been accurately and correctly shown.
Date: June 8, 2023
T. Hartwick
ONTARIO LAND SURVEYOR

OWNER'S CERTIFICATE
This is to certify that I am the owner of the lands to be subdivided and that this plan was
prepared in accordance with my instructions.
Date: _____
Carmine Zayoun
Wild Pine Trails Inc.
I have authority to bind the corporation.

**ADDITIONAL INFORMATION REQUIRED UNDER
SECTION 51-17 OF THE PLANNING ACT**
(a) see plan
(b) see plan
(c) see plan
(d) multi-family residential housing, open space
(e) see plan
(f) see plan
(g) see plan
(h) City of Ottawa
(i) see soils report
(j) see plan
(k) sanitary, storm sewers, municipal water, bell, hydro, cable and
gas to be available
(l) subject to instrument N476857, see plan for location

AREA SCHEDULE

LOT/BLOCK	AREA (sqm)
1	12 092
2	6 410
3	708
STREET	1 303
TOTAL	20 513



REGISTERED PLAN 4M-845