

KEY PLAN (Not To Scale)

DRAFT PLAN OF STANDARD CONDOMINIUM OF PART OF LOT 24 CONCESSION 11
 Geographic Township of Goulbourn
 CITY OF OTTAWA

Prepared by Annis, O'Sullivan, Vollebek Ltd

Scale 1:400
 16 12 8 4 0 8 16 Metres

Metric
 DISTANCES SHOWN ON THIS PLAN ARE IN METRES AND CAN BE CONVERTED TO FEET BY DIVIDING BY 0.3048

- Notes & Legend**
- x 69.00 Denotes Existing Elevations
 - - - Property Line
 - - - Fence
 - o TB-B Bell Terminal Box
 - o TB-C Cable Terminal Box
 - o U Utility Pole
 - AN Anchor
 - o B Bollard

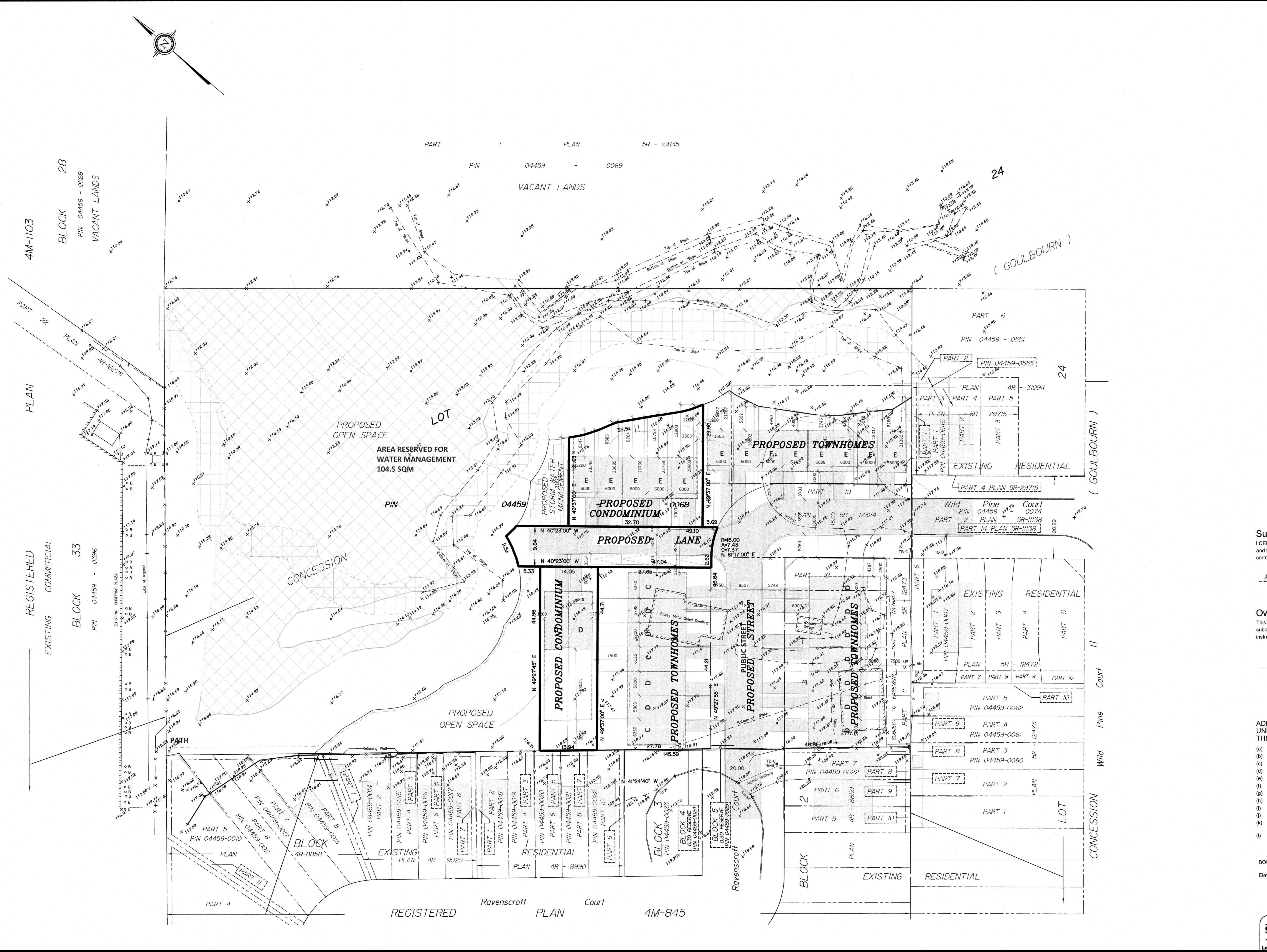
Surveyor's Certificate
 I CERTIFY THAT the boundaries of the Lands to be subdivided and their relationship to the adjacent lands are accurately and correctly shown.
 Date: Aug 27/21
 T. Hartwick
 Ontario Land Surveyor

Owner's Certificate
 This is to certify that I am the owners / agent of the lands to be subdivided and that this plan was prepared in accordance my instructions.
 Date: _____
 Carmine Zayoun (Authorized Signing Officer)
 WILD PINES TRAILS INC.
 I have the authority to bind the corporation.

- ADDITIONAL INFORMATION REQUIRED UNDER SECTION 51 (17) OF THE PLANNING ACT.**
- (a) See Plan (Boundaries)
 - (b) See Plan (Highways)
 - (c) See Plan (Key Plan)
 - (d) See Plan
 - (e) See Plan (Adjoining Lands)
 - (f) See Plan
 - (g) See Plan (Features)
 - (h) Municipal Water System Available
 - (i) See Soils Report
 - (j) See Plan (Elevations)
 - (k) All Municipal Services Available (Hydro, Sewage & Telephone)
 - (l) See Plan (Easements)

BOUNDARY INFORMATION COMPILED FROM PLAN 4R-27825
 Elevations shown hereon are referred to geodetic datum.

ANNIS, O'SULLIVAN, VOLLEBEK LTD.
 14 Concourse Gate, Suite 500
 Nepean, Ont. K2E 7S6
 Phone: (613) 727-0550 / Fax: (613) 727-1079
 Email: info@anniso.com
 Ontario Land Surveyors (Lic. No. 29847-21 Zayoun Pl. Lt. 24 Cl. 60 DPSC O)



2021/08/23 10:52 AM, C:\Users\jdoyle\OneDrive\Documents\2021\08\23\10:52 AM, C:\Users\jdoyle\OneDrive\Documents\2021\08\23\10:52 AM, C:\Users\jdoyle\OneDrive\Documents\2021\08\23\10:52 AM