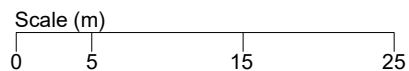
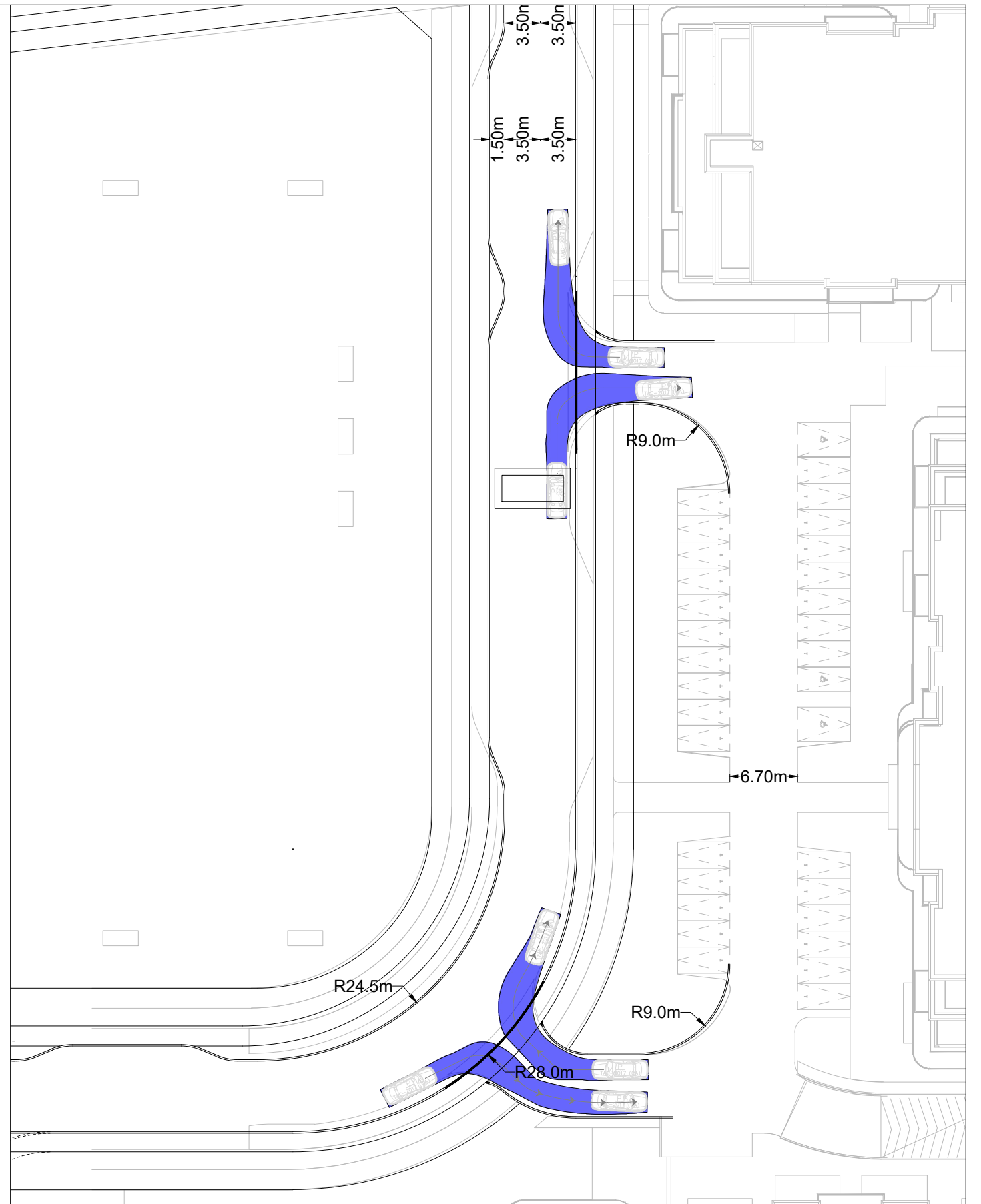
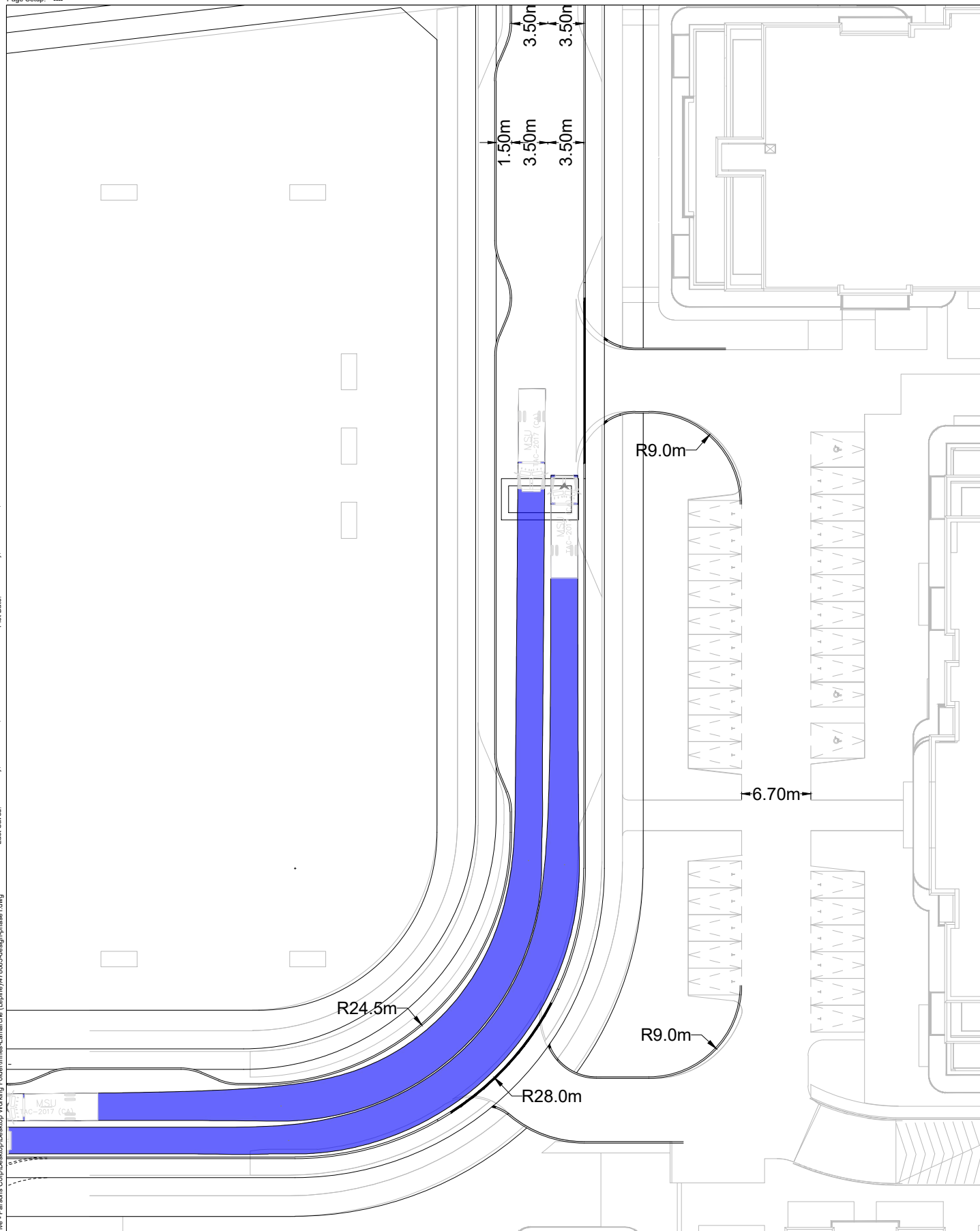


Legend

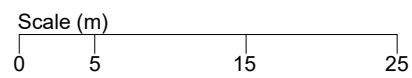


NOTE: The location of utilities is approximate only, the exact location should be determined by consulting the municipal authorities and utility companies concerned. The contractor shall prove the location of utilities and shall be responsible for adequate protection from damage.

Drawing Description		DRAFT - OPTION 1 - FIRE ACCESS	
Client		Date	2022/12/13
Project Number	478083	Figure Number	002
Project Description		3484 INNES ROAD	

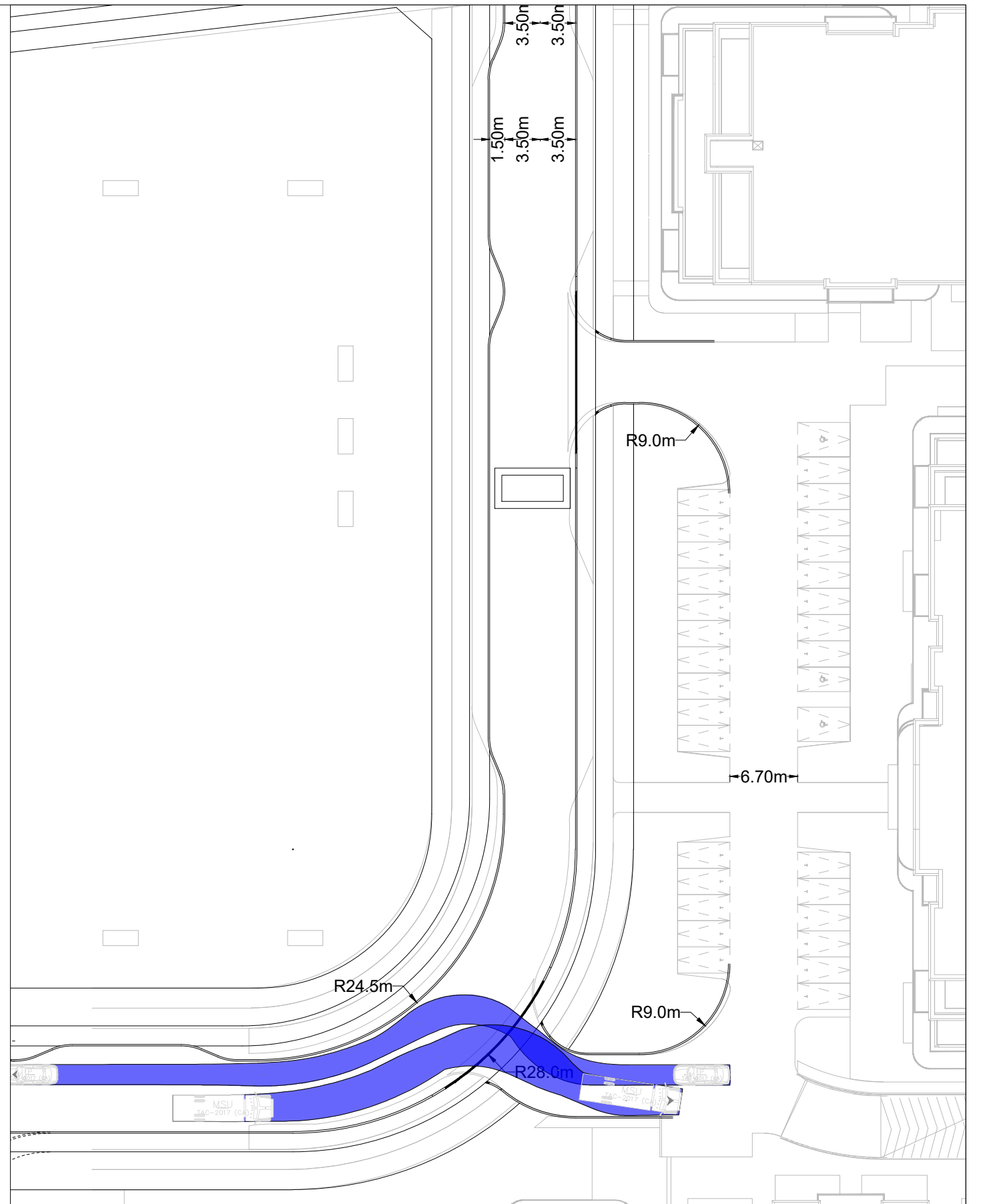
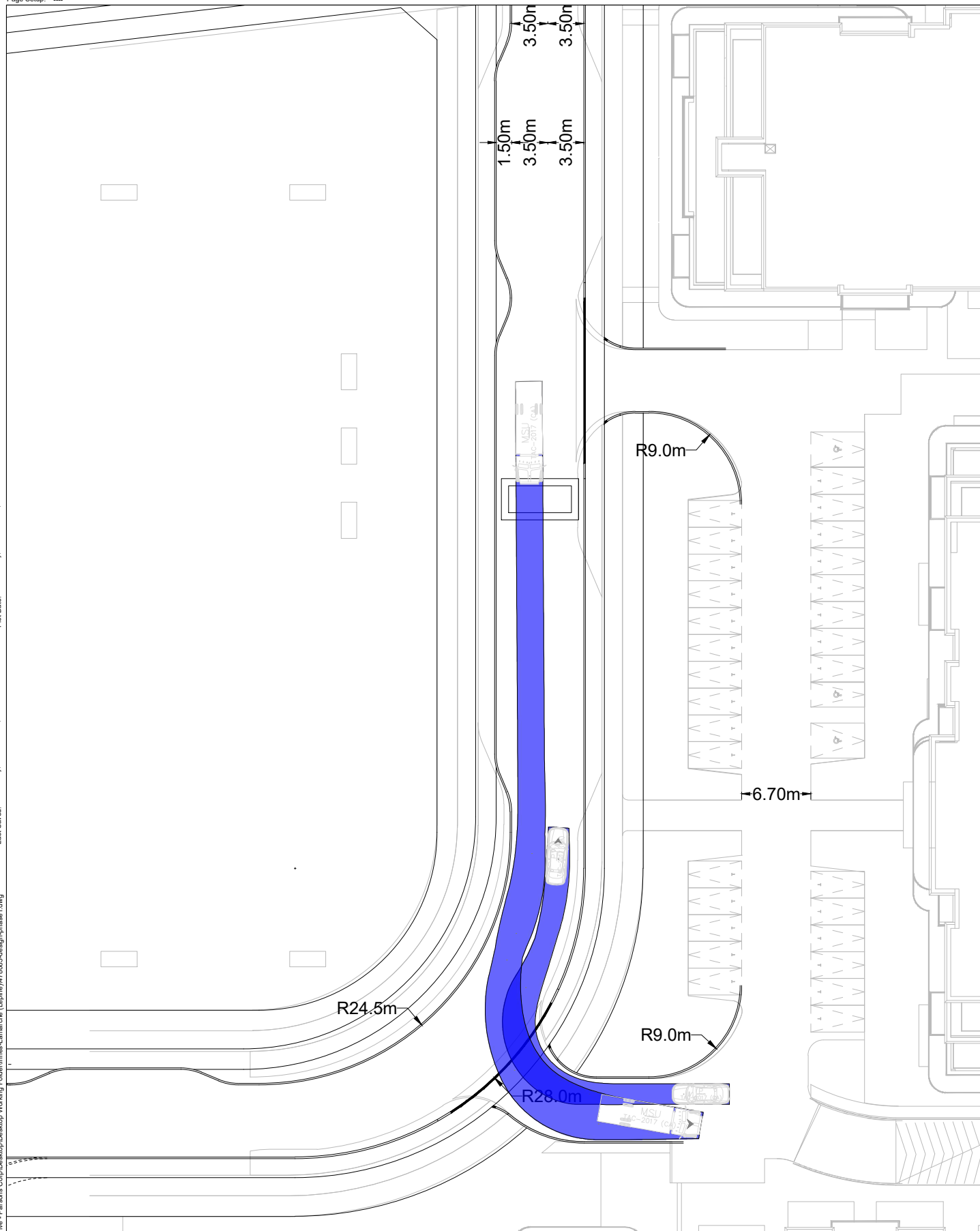


Legend

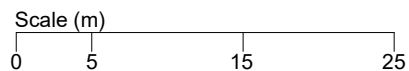


Drawing Description				<b>DRAFT - OPTION 1 - MSU CIRCULATION + P ENTERING/EXITING</b>			
Client		Date		Figure Number			
		2022/12/13		004			
Project Number				Project Description			
478083				3484 INNES ROAD			

NOTE: The location of utilities is approximate only, the exact location should be determined by consulting the municipal authorities and utility companies concerned. The contractor shall prove the location of utilities and shall be responsible for adequate protection from damage.



Legend



Drawing Description		DRAFT - OPTION 1 - MSU+P	
Client	Date	2022/12/13	Figure Number
Project Number	Project Description	478083	3484 INNES ROAD
			003

NOTE: The location of utilities is approximate only, the exact location should be determined by consulting the municipal authorities and utility companies concerned. The contractor shall prove the location of utilities and shall be responsible for adequate protection from damage.