

PART 2 PLAN 5R - 2175

PART 1 PLAN 5R - 11374

P I N 0 4 4 8 7 - 0 3 4 6

PART 1 PLAN 5R - 7173

P I N 0 4 4 8 7 - 0 3 4 5

PART 2 PLAN 5R - 2175
P I N 0 4 4 8 7 - 0 3 4 7

PART 1 PLAN 4R - 20914

IB(1236)

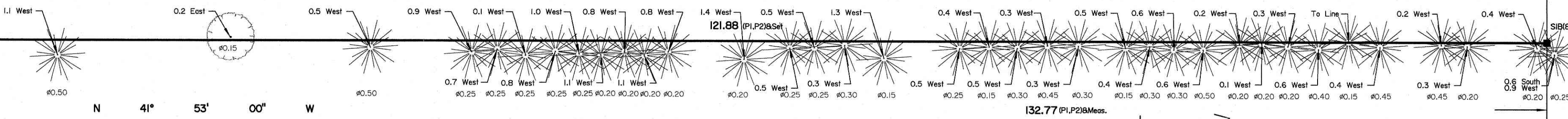
73.18 (P1,P2)Meas.

N 47° 53' 00"

SIB(857)

MAPLE GROVE ROAD ALLOWANCE BETWEEN TOWNSHIPS OF HUNTLEY AND GOULBOURN

(HUNTLEY)
CONCESSION
LOT

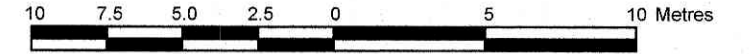


PLAN OF SURVEY OF

PART OF LOT 1
CONCESSION 1
GEOGRAPHIC TOWNSHIP OF HUNTLEY
CITY OF OTTAWA

Surveyed by Annis, O'Sullivan, Vollebakk Ltd.

Scale 1 : 250



Metric

DISTANCES SHOWN ON THIS PLAN ARE IN METRES AND CAN BE CONVERTED TO FEET BY DIVIDING BY 0.3048

Surveyor's Certificate

I CERTIFY THAT:

1. This survey and plan are correct and in accordance with the Surveys Act and the Surveyors Act and the regulations made under them.
2. The survey was completed on the 29th day of November, 2022.

Date Dec 6/22

T. Hartwick
Ontario Land Surveyor

This plan of survey relates to AOLS Plan Submission Form Number V-40726

Notes & Legend

Denotes	
	Survey Monument Planted
	Survey Monument Found
SIB	Standard Iron Bar
IB	Iron Bar
(WIT)	Witness
Meas.	Measured
(AOG)	Annis, O'Sullivan, Vollebakk Ltd.
(P1)	Plan 4R-20914
(P2)	(AOG) Plan Dated January 1, 2021
	Deciduous Tree
	Coniferous Tree
	Property Line

Bearings are grid, derived from Can-Net 2016 Real Time Network GPS observations, MTM Zone 9 (76°30' West Longitude) NAD-83 (original).

For bearing comparisons, a rotation of 0°25'20" counter-clockwise was applied to bearings on plan P2

© Annis, O'Sullivan, Vollebakk Ltd, 2022. THIS PLAN IS PROTECTED BY COPYRIGHT

ANNIS, O'SULLIVAN, VOLLEBEKK LTD.

14 Concourse Gate, Suite 500

Nepean, Ont. K2E 7S6

Phone: (613) 727-0850 / Fax: (613) 727-1079

Email: Nepean@aovltd.com

Ontario Land Surveyors Job No. 21202-20 MGT Inc P1L1 CI HJ T F FL

Y:\2020\31202-20 Maple Grove Road\Draft Plan of Subdivision, TWP\PLAN 21202-20 MGT Inc P1L1 CI HJ T F.dwg