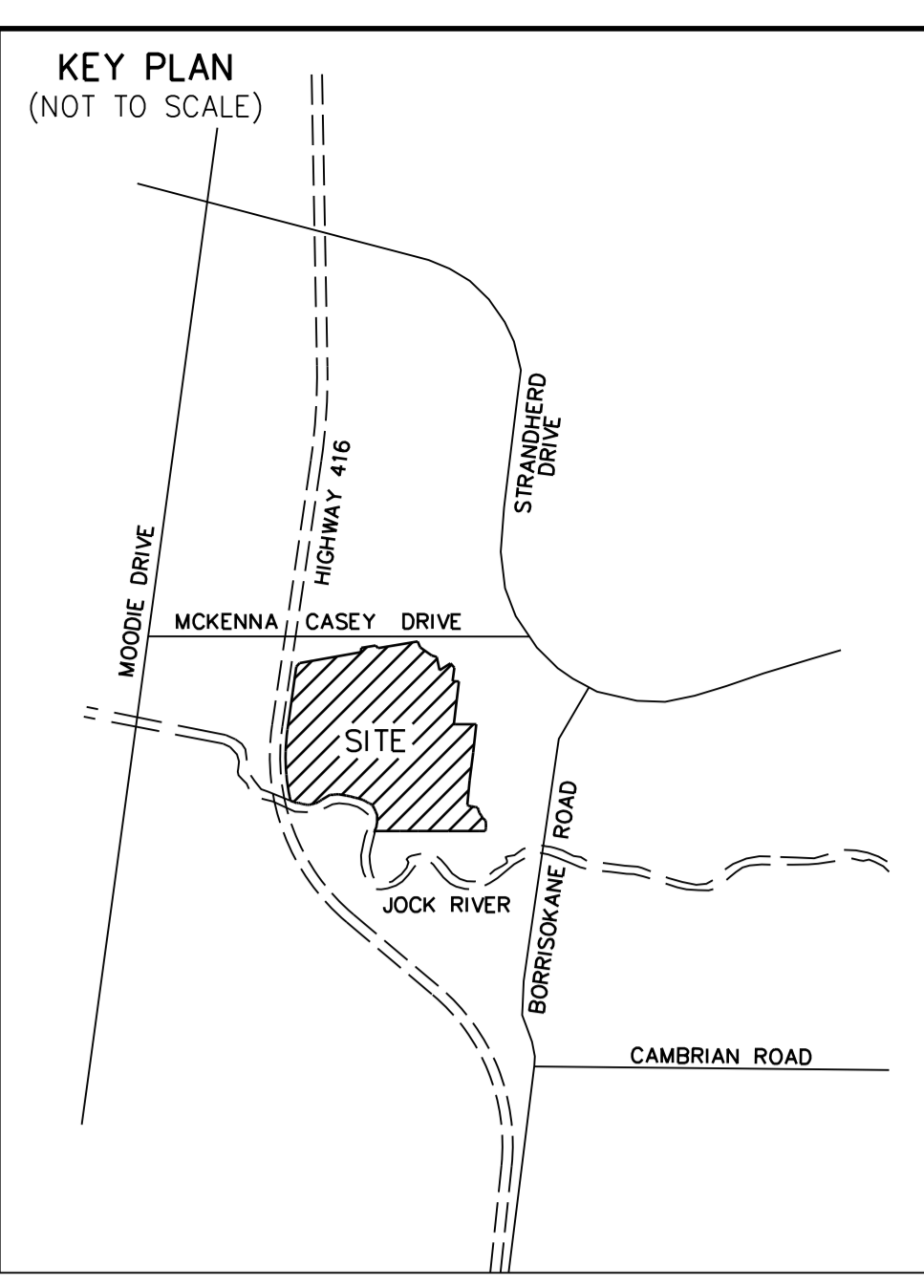


SUBJECT TO THE CONDITIONS, IF ANY, SET FORTH IN OUR LETTER DATED: ..... THIS DRAFT PLAN IS APPROVED BY THE CITY OF OTTAWA UNDER SECTION 51 OF THE PLANNING ACT THIS ..... DAY OF ..... 2021.

PLANNING, INFRASTRUCTURE AND ECONOMIC DEVELOPMENT DEPARTMENT  
CITY OF OTTAWA

**ADDITIONAL INFORMATION AS REQUIRED UNDER SECTION 51(17) OF THE PLANNING ACT R.S.O. 2001**

(A) ZONING(S) AND (L) - AS SHOWN ON THIS PLAN  
(B) - AS SHOWN ON THIS DRAFT AND KEY PLAN  
(C) - AS SHOWN ON THIS DRAFT AND KEY PLAN  
(D) - LAND TO BE USED IN ACCORDANCE WITH THE SCHEDULE OF LAND USE  
(E) - FULL MUNICIPAL SERVICES  
(F) - OFFSHORE MARINE DEPOSITS OF CLAY, SILTY CLAY AND S&L, BEDROCK OTTAWA FORMATION, LIMESTONE



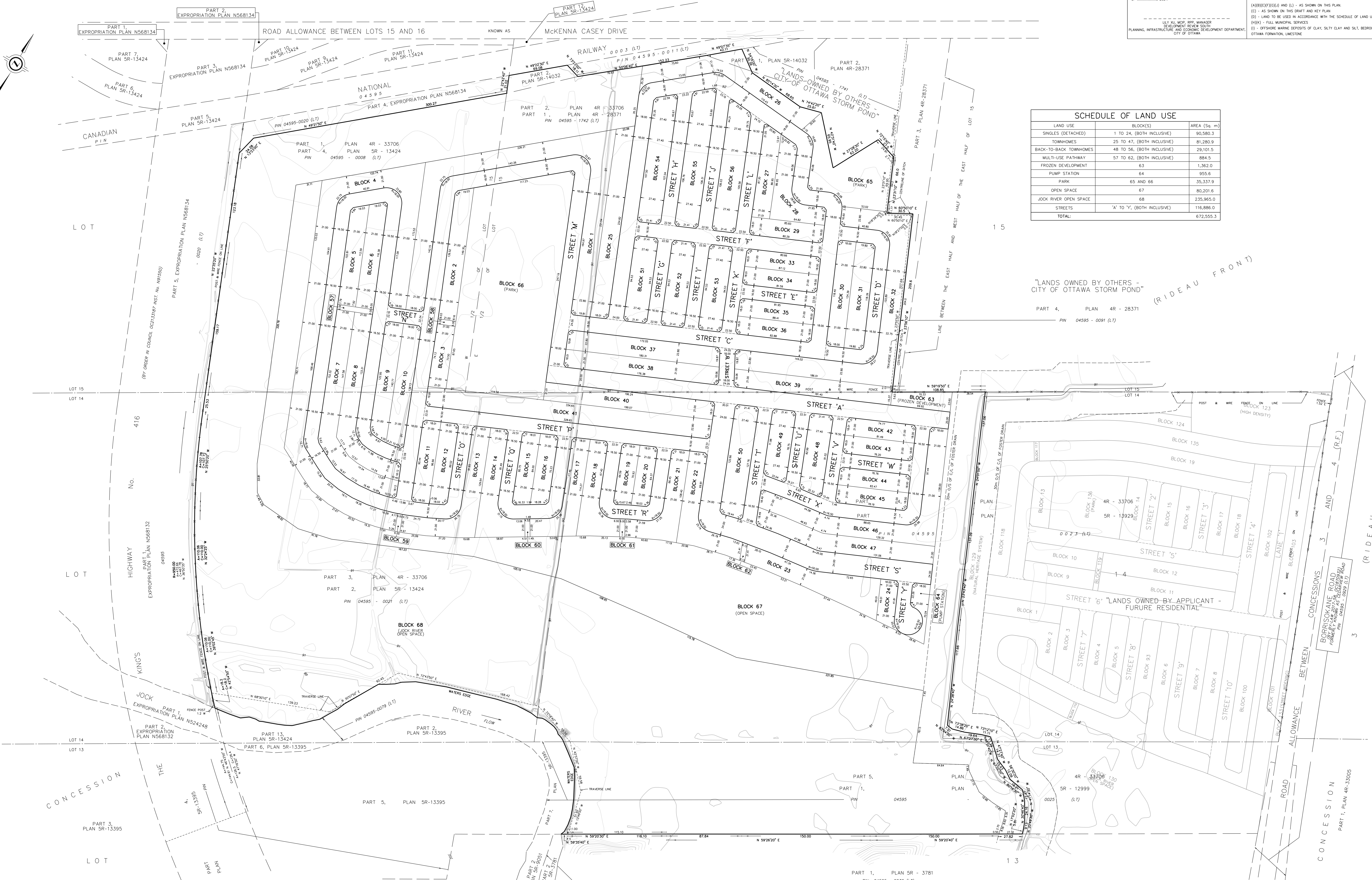
**SCHEDULE OF LAND USE**

LAND USE	BLOCK(S)	AREA (Sq. m)
SINGLES (DETACHED)	1 TO 24, (BOTH INCLUSIVE)	90,980.3
TOWNHOMES	25 TO 47, (BOTH INCLUSIVE)	81,280.9
BACK-TO-BACK TOWNHOMES	48 TO 56, (BOTH INCLUSIVE)	29,101.5
MULTI-USE PATHWAY	57 TO 62, (BOTH INCLUSIVE)	884.5
FROZEN DEVELOPMENT	63	1,362.0
PUMP STATION	64	955.6
PARK	65 AND 66	35,337.9
OPEN SPACE	67	80,201.6
JOCK RIVER OPEN SPACE	68	235,965.0
STREETS	'X' TO 'Y', (BOTH INCLUSIVE)	116,886.0
<b>TOTAL:</b>		<b>672,555.3</b>

DRAFT PLAN OF SUBDIVISION  
**PART OF LOTS 13, 14 AND 15  
CONCESSION 4 (RIDEAU FRONT)**  
GEOGRAPHIC TOWNSHIP OF NEPEAN  
CITY OF OTTAWA  
SCALE 1 : 1250

J.D. BARNES LIMITED  
© COPYRIGHT 2021

**NOTES**  
BOUNDARY INFORMATION IS COMPILED FROM PLAN 4R-33706  
GEOGRAPHIC DETAIL SHOWN ON THIS PLAN WAS COMPLETED ON THE 15th DAY OF OCTOBER, 2021  
DISTANCES ARE GROUND  
ALL DISTANCES ON CURVES ARE ARC DISTANCES UNLESS OTHERWISE SPECIFIED  
**ELEVATION NOTE**  
ELEVATIONS SHOWN ON THIS PLAN ARE RELATED TO GEODIC DATUM AND ARE DERIVED FROM AN INVENTORY OF TRANSPORTATION CONTROL MONUMENTS (TOWNSHIP) HAVING A PUBLISHED ELEVATION OF 78.645 METRES.  
**LEGEND**  
--- CONTOUR INTERVALS ARE SHOWN AS 1.00M FOR MAJOR AND 0.25M FOR MINOR  
--- SINES --- MAJOR CONTOUR  
--- DOTTED --- MINOR CONTOUR



"LANDS OWNED BY OTHERS -  
THE CORPORATION OF THE TOWNSHIP OF NEPEAN"

**OWNER'S CERTIFICATE**  
BARNHARTEN CONSERVANCY DEVELOPMENT CORPORATION, BEING THE REGISTERED OWNER OF THE SUBJECT LANDS HEREBY AUTHORIZES J.D. BARNES LIMITED TO PREPARE AND SUBMIT THIS DRAFT PLAN OF SUBDIVISION FOR APPROVAL.

**FOR REVIEW**  
DATE: .....  
I HAVE THE AUTHORITY TO BIND THE CORPORATION

**SURVEYOR'S CERTIFICATE**  
I HEREBY CERTIFY THAT THE BOUNDARIES OF THE LAND TO BE SUBDIVIDED ARE CORRECTLY SHOWN.

**PRELIMINARY**  
DATE: .....  
SHAWN LEROUX  
DRAFTED LAND SURVEYOR

**J.D. BARNES**  
LAND INFORMATION SPECIALISTS  
1500 SHEPPARD AVENUE EAST, SUITE 100, SCARBOROUGH, ONTARIO M1S 1T6  
TEL: (416) 291-1111 FAX: (416) 291-1112 WWW.JDBARNES.COM