

**EXISTING TREE LIST**

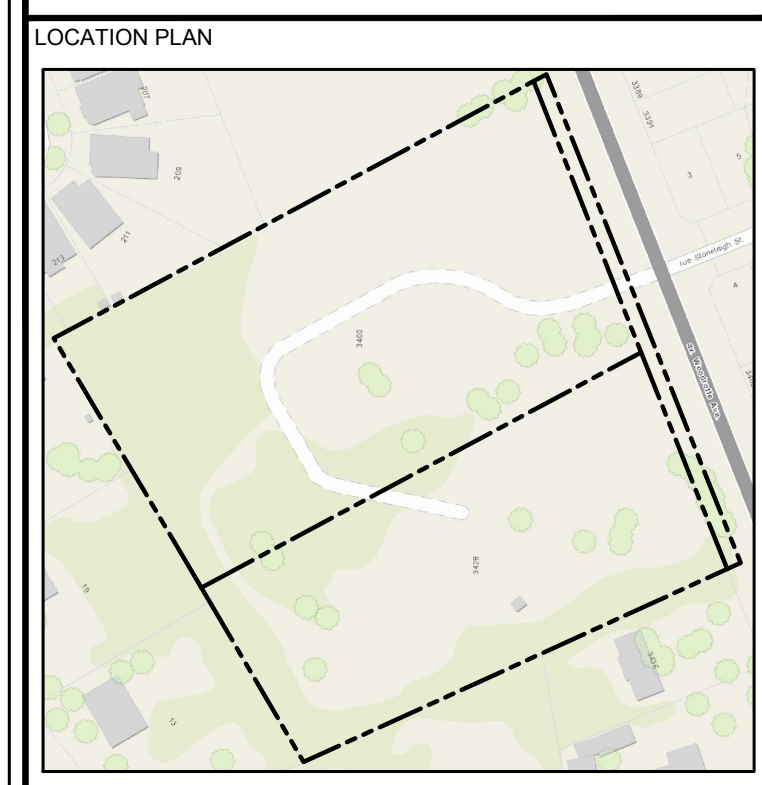
KEY	QTY.	BOTANICAL NAME	COMMON NAME	SIZE	CONDITION	REMARKS
<b>TREES</b>						
AS	*	Acer saccharum	Sugar Maple	100-1000mm ø	FAIR-GOOD	See Plan
AG	*	Acer ginnala	Amur Maple	100mm ø	GOOD	See Plan
AN	*	Acer negundo	Manitoba Maple	200-300mm ø	GOOD	See Plan
AP	*	Acer platanoides	Norway Maple	100-500mm ø	GOOD	See Plan
BC	*	Prunus serotina	Black Cherry	100mm ø	GOOD	See Plan
BP	*	Betula papyrifera	Paper Birch	100-200mm ø	GOOD	See Plan
CA	1	Catalpa speciosa	Catalpa	1000mm ø	GOOD	See Plan
JN	*	Juglans nigra	Black Walnut	100-200mm ø	GOOD	See Plan
MA	*	Malus sp.	Crabapple	100-500mm ø	GOOD	See Plan
PB	*	Pinus banksiana	Jack Pine	200-300mm ø	GOOD	See Plan
PG	*	Picea glauca	White Spruce	200-300mm ø	GOOD	See Plan
PR	*	Pinus resinosa	Red Pine	200-300mm ø	GOOD	See Plan
PD	*	Populus deltoides	Eastern Cottonwood	300-700mm ø	GOOD	See Plan
RS	*	Robinia pseudoacacia	Black Locust	100-500mm ø	GOOD	See Plan
PT	*	Populus tremuloides	Trembling Aspen	100-200mm ø	GOOD	See Plan
RT	*	Rhus typhina	Staghorn Sumac	100mm ø	GOOD	See Plan
SP	*	Pinus sylvestris	Scots Pine	100-300mm ø	GOOD	See Plan
TA	*	Tilia americana	Basswood	100-700mm ø	FAIR-GOOD	See Plan
WP	*	Pinus strobus	White Pine	200-300mm ø	GOOD	See Plan

\*Denotes numerous

**PROPOSED TREE LIST**

KEY	QTY.	BOTANICAL NAME	COMMON NAME	SIZE	CONDITION	REMARKS
<b>TREES</b>						
CO	3	Celtis occidentalis	Hackberry	60mm ø	B&B	See Plan
HL	14	Gleditsia triacanthos	Honeylocust	60mm ø	B&B	See Plan
JP	3	Pinus banksiana	Jack Pine	1.8m Ht.	B&B	See Plan
NS	3	Picea abies	Norway Spruce	1.8m Ht.	B&B	See Plan
RM	9	Acer rubrum	Red Maple	60mm ø	B&B	See Plan
RO	6	Quercus rubra	Red Oak	60mm ø	B&B	See Plan
RP	3	Pinus resinosa	Red Pine	1.8m Ht.	B&B	See Plan
SM	3	Acer saccharum	Sugar Maple	60mm ø	B&B	See Plan
WP	3	Pinus strobus	White Pine	1.8m Ht.	B&B	See Plan
WS	5	Picea glauca	White Spruce	1.8m Ht.	B&B	See Plan

- CO
- HL
- JP
- NS
- RM
- RO
- RP
- SM
- WP
- WS



CONSULTANTS  
SURVEYORS: Robinson Land Development  
350 Palladium Drive  
Ottawa, Ontario, K2V 1A8  
PH: (613) 592-6060 ext. 155  
FAX: (613) 592-5995

LEGEND

- EXISTING TREES TO REMAIN
- EXISTING TREES TO BE REMOVED
- TREE PROTECTION FENCE

No.	Issue	Date	DR	CK
3	REVISED PER CITY COMMENTS	05/08/2018	ML	JL
2	REVISED PER NEW CUP	03/07/2017	ML	JL
1	ISSUED FOR COORDINATION	07/19/2016	ML	JL

**JAMES B. LENNOX & ASSOCIATES INC.**  
LANDSCAPE ARCHITECTS  
3332 CARLING AVE. OTTAWA, ONTARIO K2H 5A8  
Tel: (613) 722-6168 Fax: (613) 722-6168

PROJECT  
3400 AND 3428 WOODROFFE AVENUE  
OTTAWA, ONTARIO

DRAWING  
TREE CONSERVATION REPORT &  
PRELIMINARY LANDSCAPE PLAN

STAMP

SCALE  
1:500

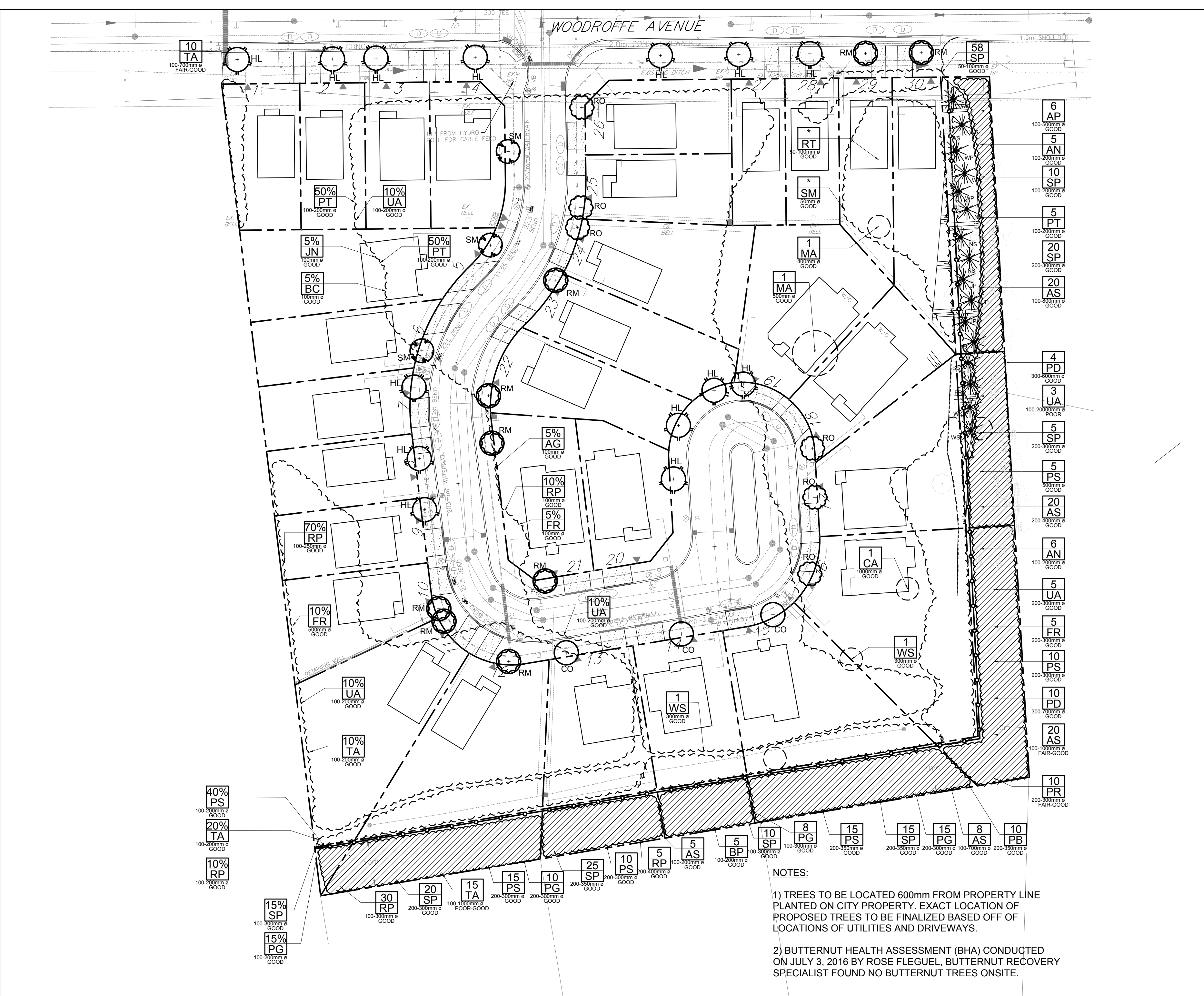
START DATE  
JUNE 2016

PROJECT NO.  
16-MIS-1629

PROJECT NORTH

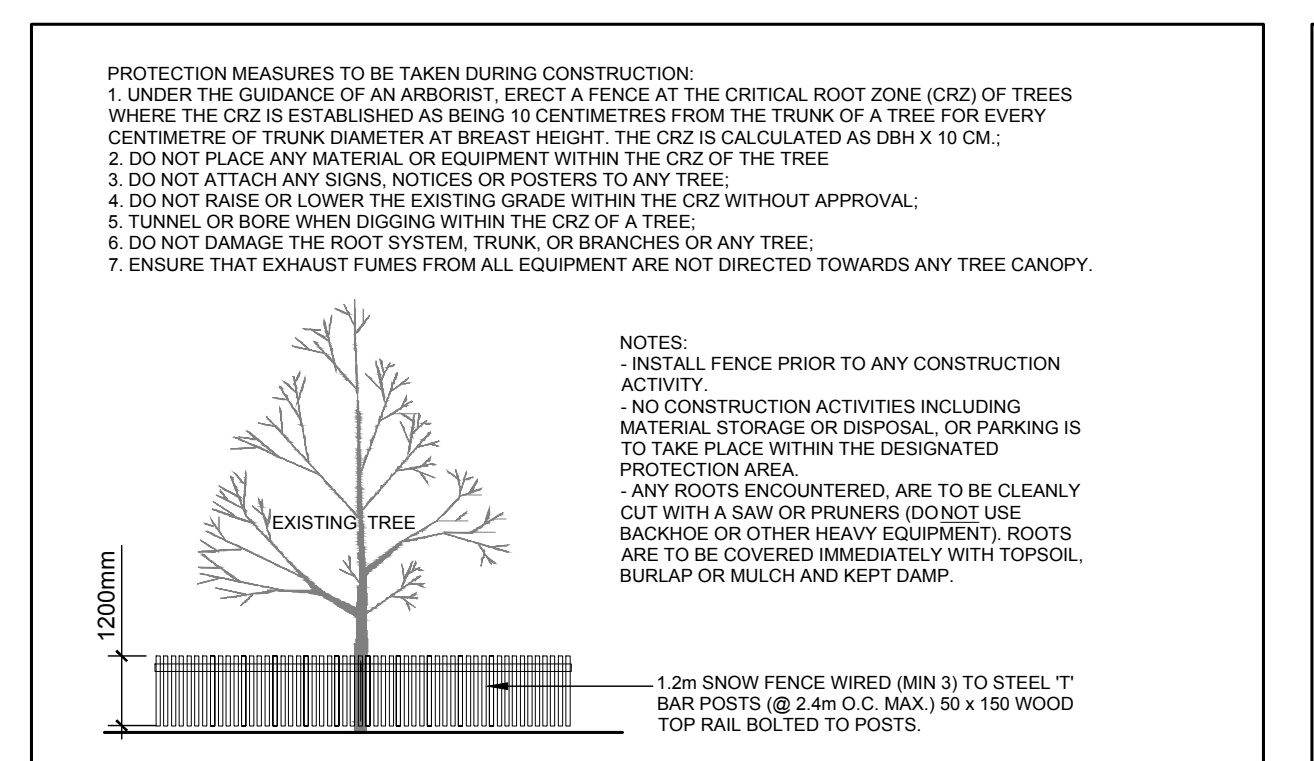
DRAWING NO.  
L.1

PLOT SIZE ARCH-D

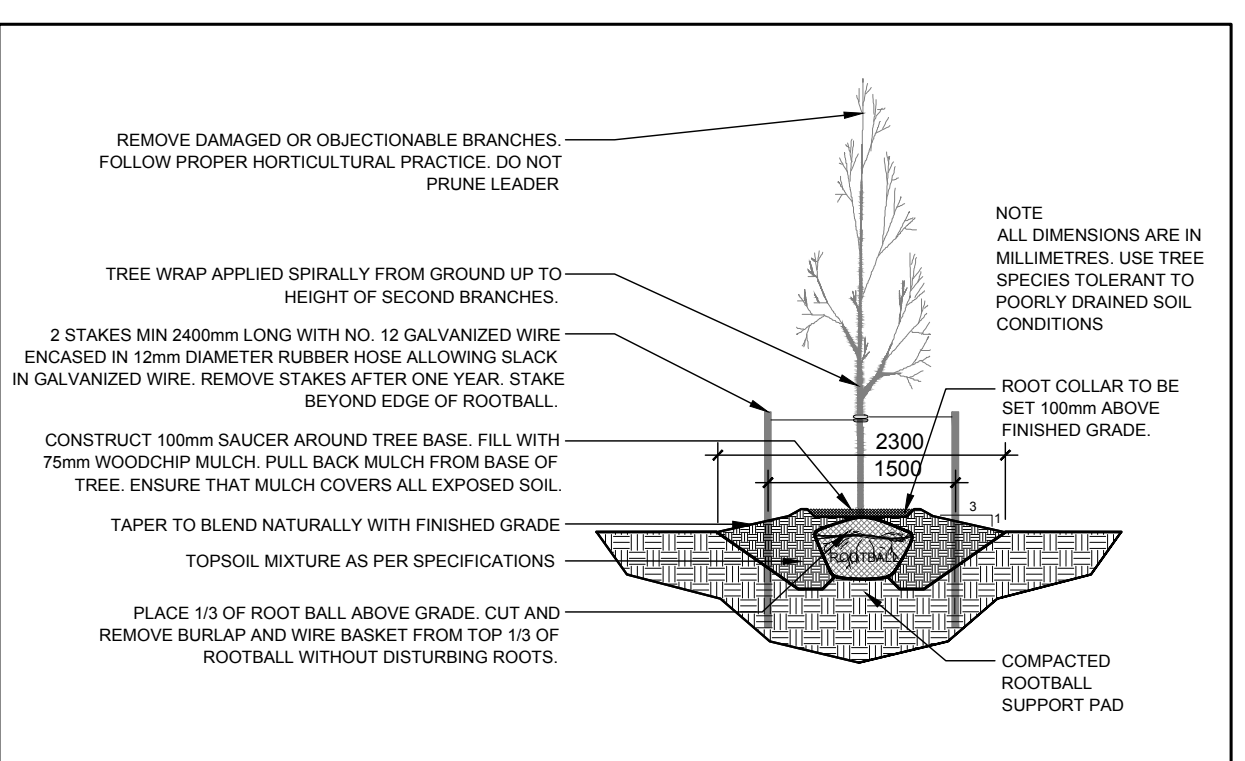


NOTES:  
1) TREES TO BE LOCATED 600mm FROM PROPERTY LINE PLANTED ON CITY PROPERTY. EXACT LOCATION OF PROPOSED TREES TO BE FINALIZED BASED OFF LOCATIONS OF UTILITIES AND DRIVEWAYS.  
2) BUTTERNUT HEALTH ASSESSMENT (BHA) CONDUCTED ON JULY 3, 2016 BY ROSE FLEGUEL, BUTTERNUT RECOVERY SPECIALIST FOUND NO BUTTERNUT TREES ONSITE.

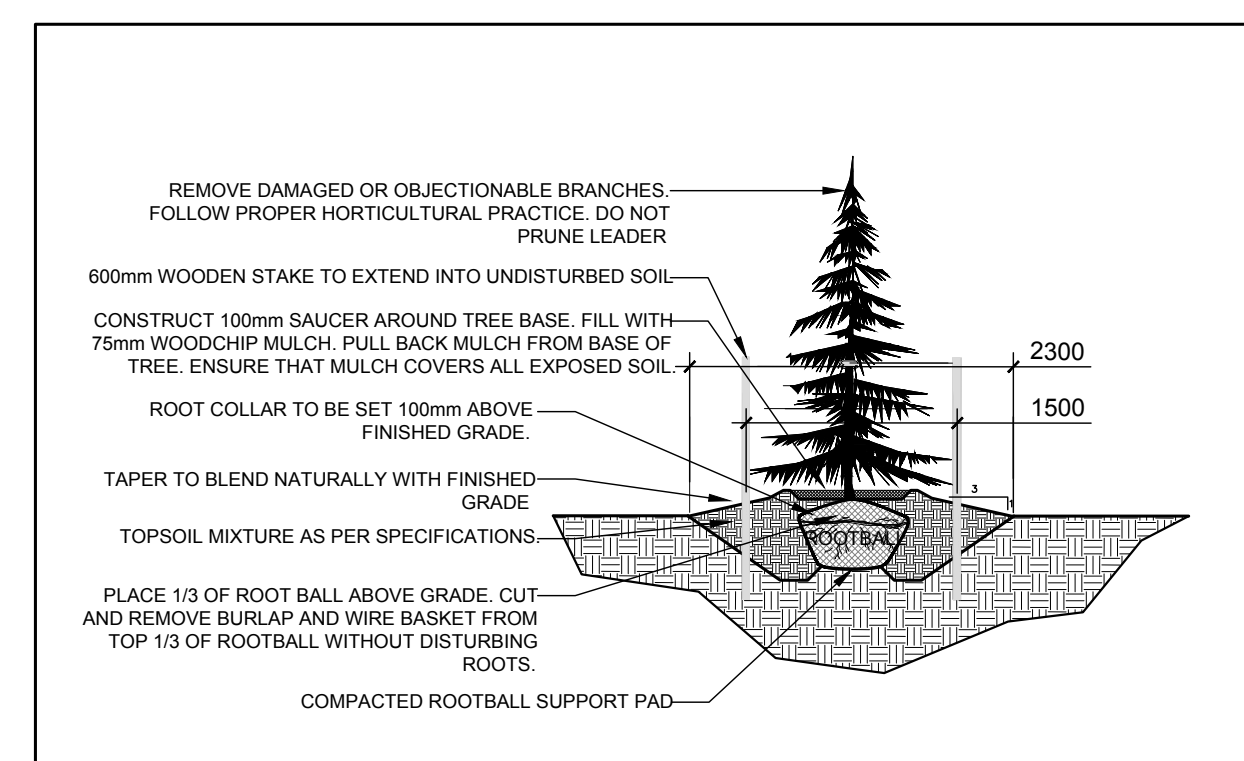
1 TREE CONSERVATION REPORT & PRELIMINARY LANDSCAPE PLAN  
SCALE: 1:500



2 TREE PROTECTION FENCE  
SCALE: NTS



3 DECIDUOUS TREE PLANTING  
SCALE: NTS



4 DECIDUOUS TREE PLANTING  
SCALE: NTS