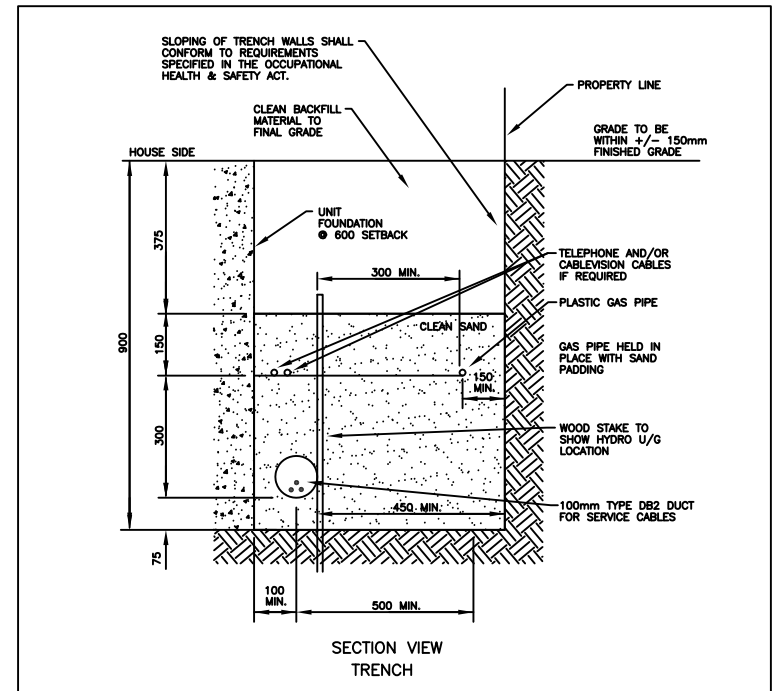
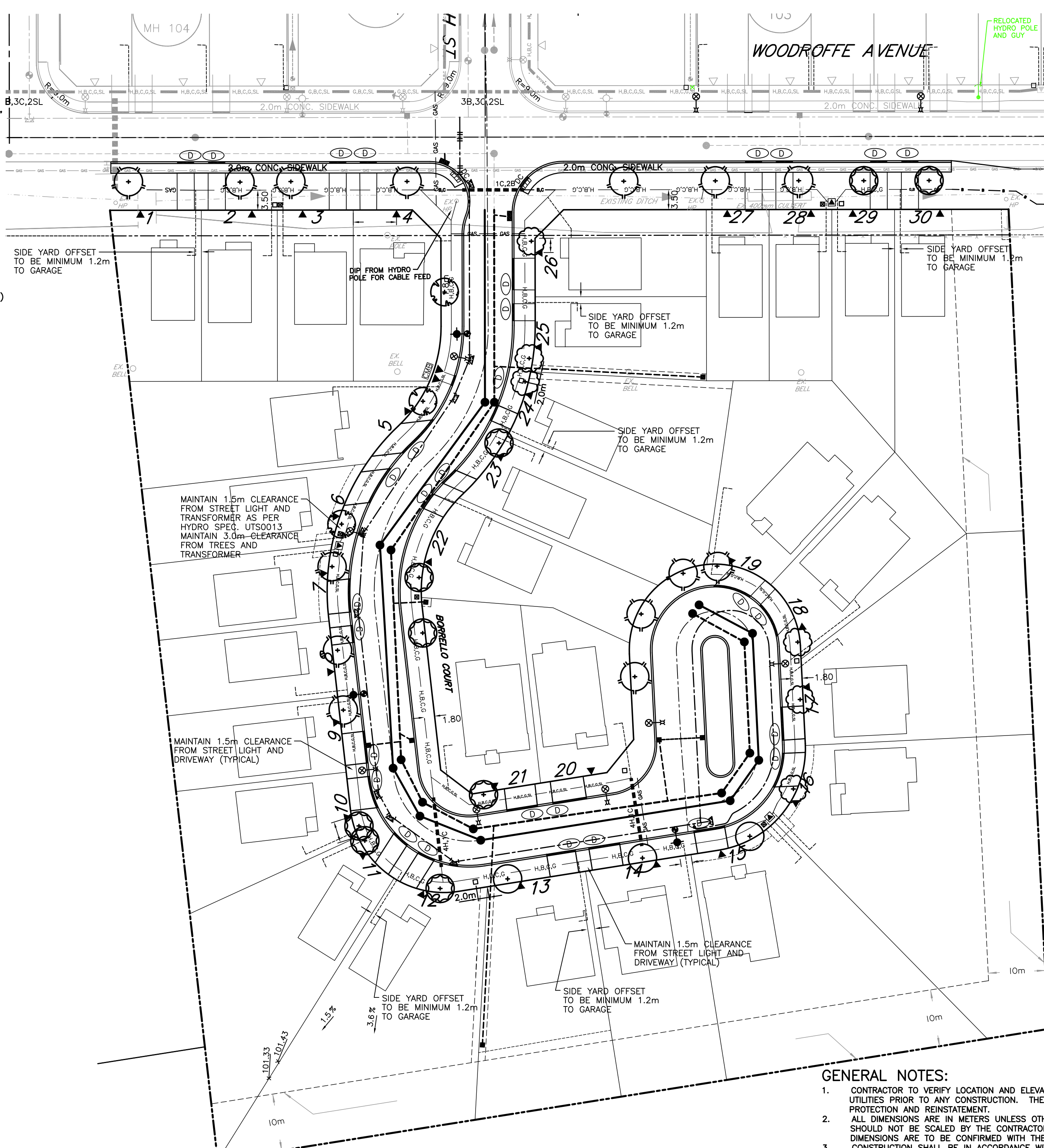
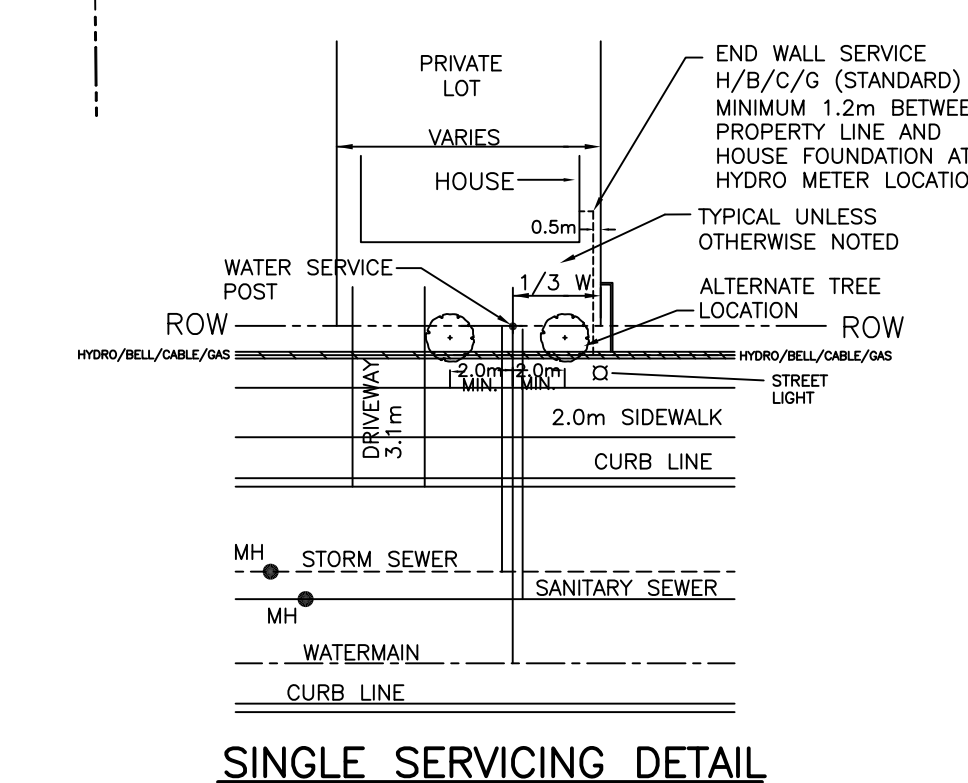
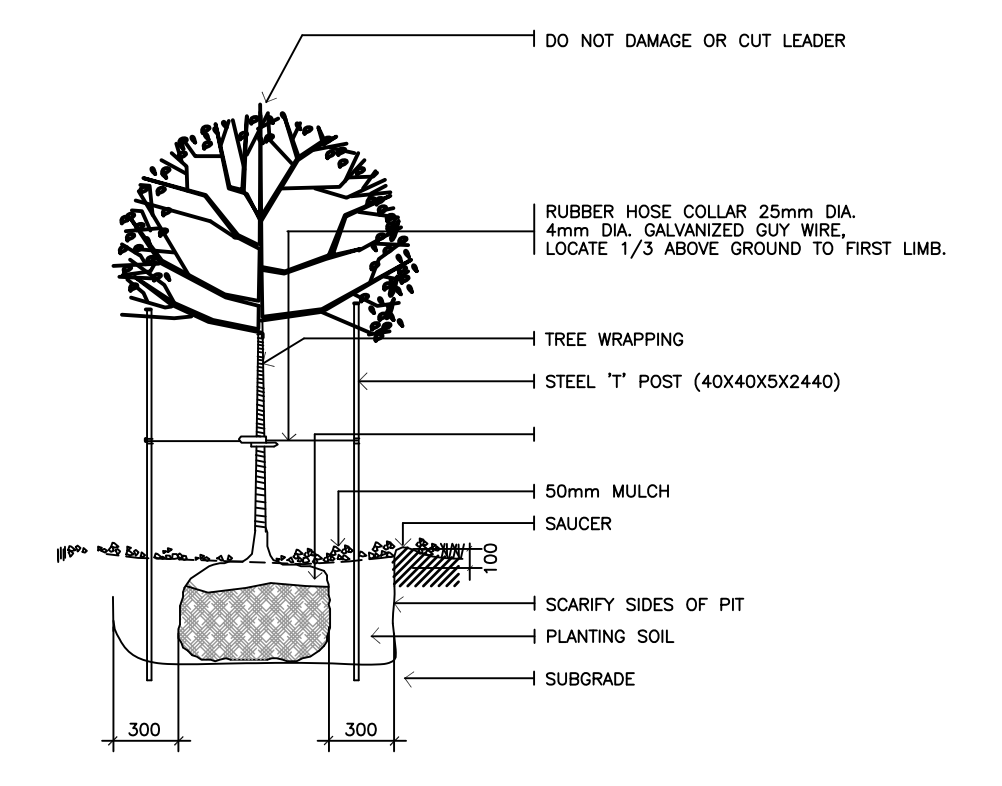
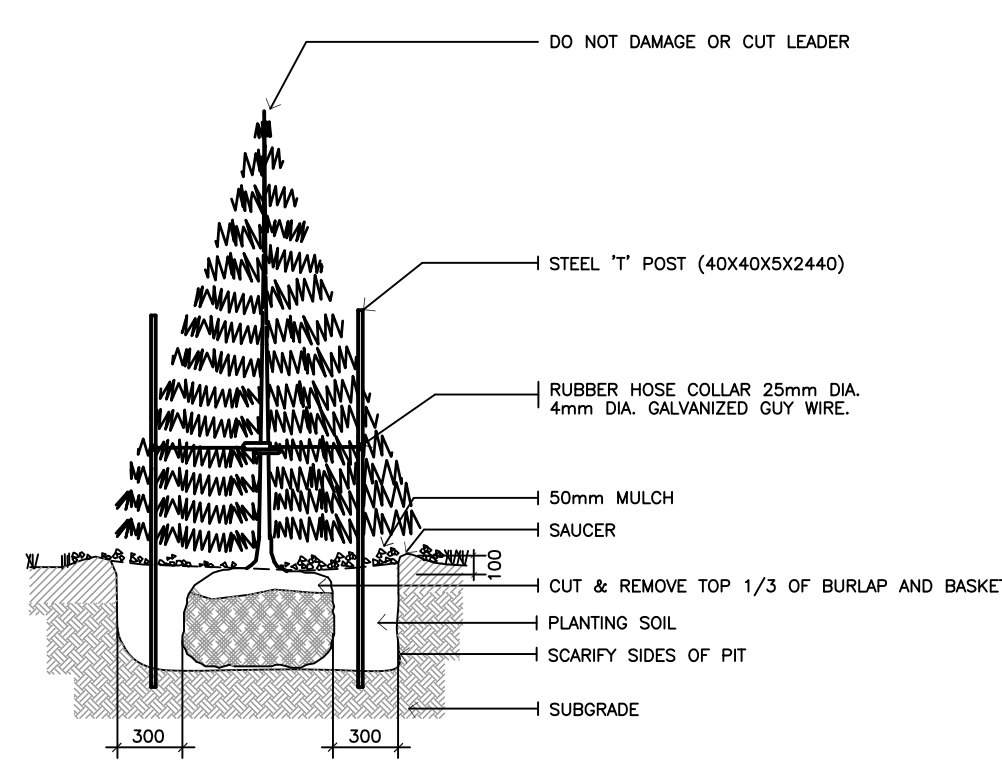
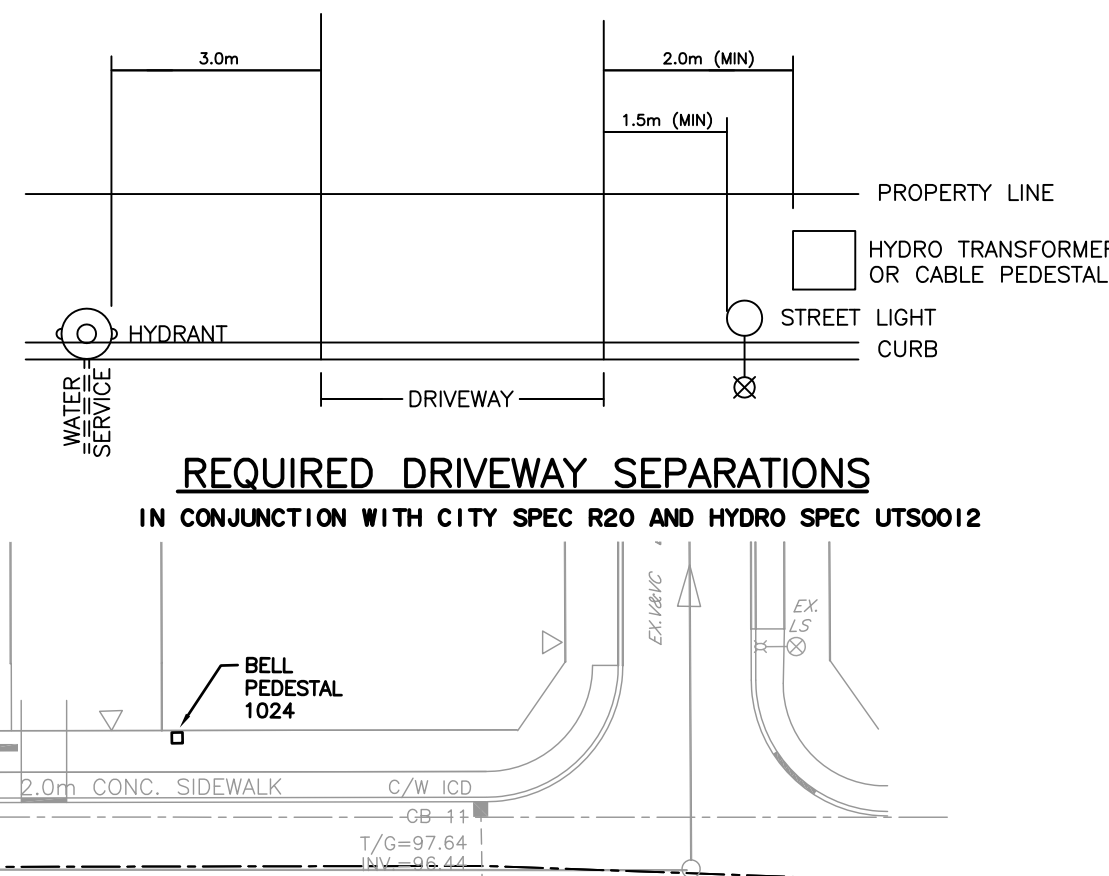
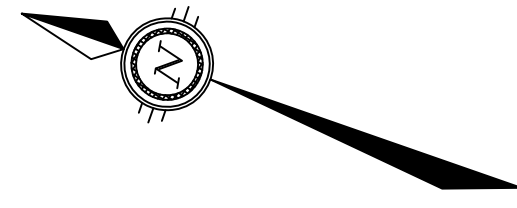


LEGEND

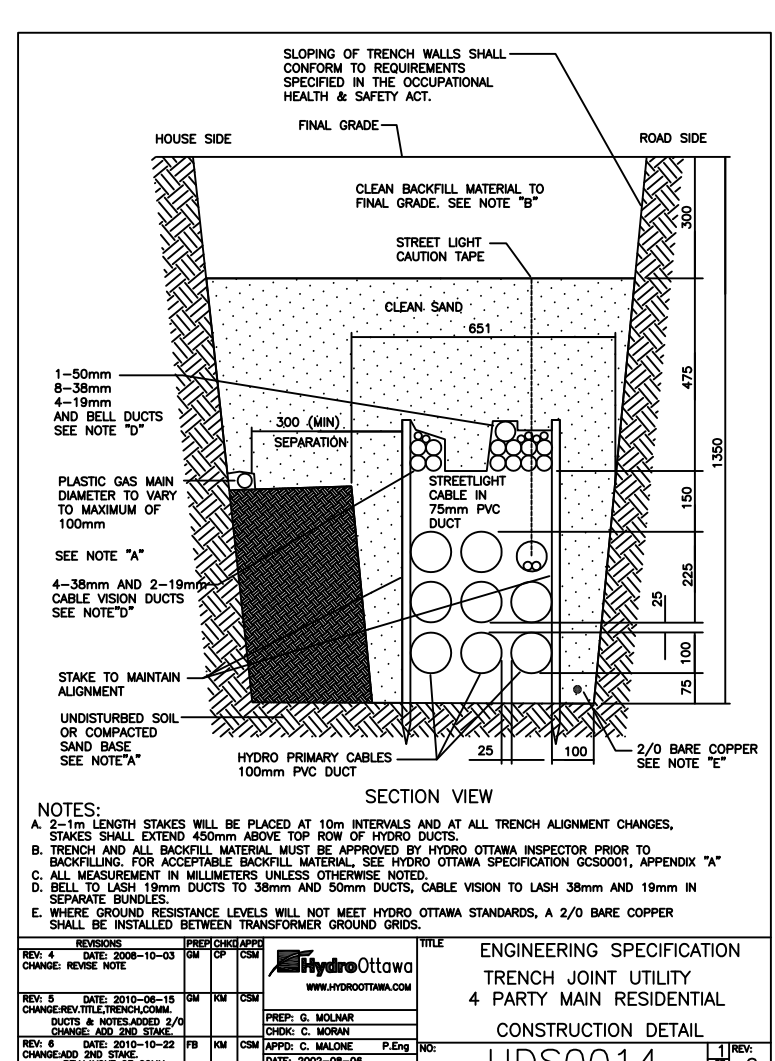
- PROPOSED HYDRANT
- EX SL EXISTING STREET LIGHT
- SANITARY SEWER WITH MANHOLE
- STORM SEWER WITH MANHOLE
- WATERMAIN
- STREET CATCHBASIN (200mm² LEAD)
- REAR YARD CATCHBASIN WITH LEAD
- VALVE AND VALVE BOX
- ▲ PROPOSED HYDRO TRANSFORMER
- ▲ PROPOSED BELL PEDESTAL
- ▲ BELL FLUSH TO GRADE (FTG) 30"x48"x24"
- ▲ BELL CENTRAL SPLITTING POINT (CSP) 47"x48"x20"
- PROPOSED CABLE TELEVISION PEDESTAL
- R PROPOSED STREETLIGHT
- H PROPOSED HYDRO TRENCH
- C PROPOSED CABLE TRENCH
- B PROPOSED BELL TRENCH
- SL PROPOSED STREETLIGHT FEEDER TRENCH
- GAS PROPOSED GAS, POLYETHYLENE PIPE
- C,H,C,SL PROPOSED COMMON TRENCH (UTILITIES AS NOTED)
- PROPOSED DUCT CROSSING
2-H NUMBER OF HYDRO DUCTS
2-B NUMBER OF BELL DUCTS
2-C NUMBER OF CABLE DUCTS
2-SL NUMBER OF STREETLIGHT FEEDER DUCTS
- PROPOSED MAIL BOX LOCATION
- PROPOSED TREE LOCATION



NOTES:

- A SPACE PITS (MINIMUM DIMENSION OF 1200mm x 1200mm) SHALL BE COMPLETELY BACKFILLED WITH CLEAN SAND.
- ALL MEASUREMENTS IN MILLIMETERS UNLESS OTHERWISE NOTED.
- TRENCH AND MANHOLE MATERIALS TO BE SPECIFIED BY HYDRO OTHER THAN PRIOR TO BACKFILLING.
- SERVICE LAYOUT ON THE RIGHT SIDE OF THE PROPERTY LINE IS MIRROR IMAGE OF THE ABOVE.
- ALL TRENCHES SHALL BE BACKFILLED WITH CLEAN SAND TO PROVIDE A CONTINUOUS CONDUIT FROM THE SUPPLY POINT TO 1000MM FROM THE MANHOLE.
- ALL BACKFILL MATERIALS MUST BE APPROVED BY HYDRO OTHER THAN PRIOR TO BACKFILLING.
- BACKFILL MATERIAL, SEE HYDRO OTHER SPECIFICATION DOCUMENT (S20001) APPROXIMATE "X".

NO.	REVISION DESCRIPTION	DATE	BY
3	RE-ISSUED FOR APPROVAL	14/02/17	SMC
2	ISSUED FOR APPROVAL	13/12/16	SMC
1	ISSUED FOR REVIEW	25/11/15	SMC

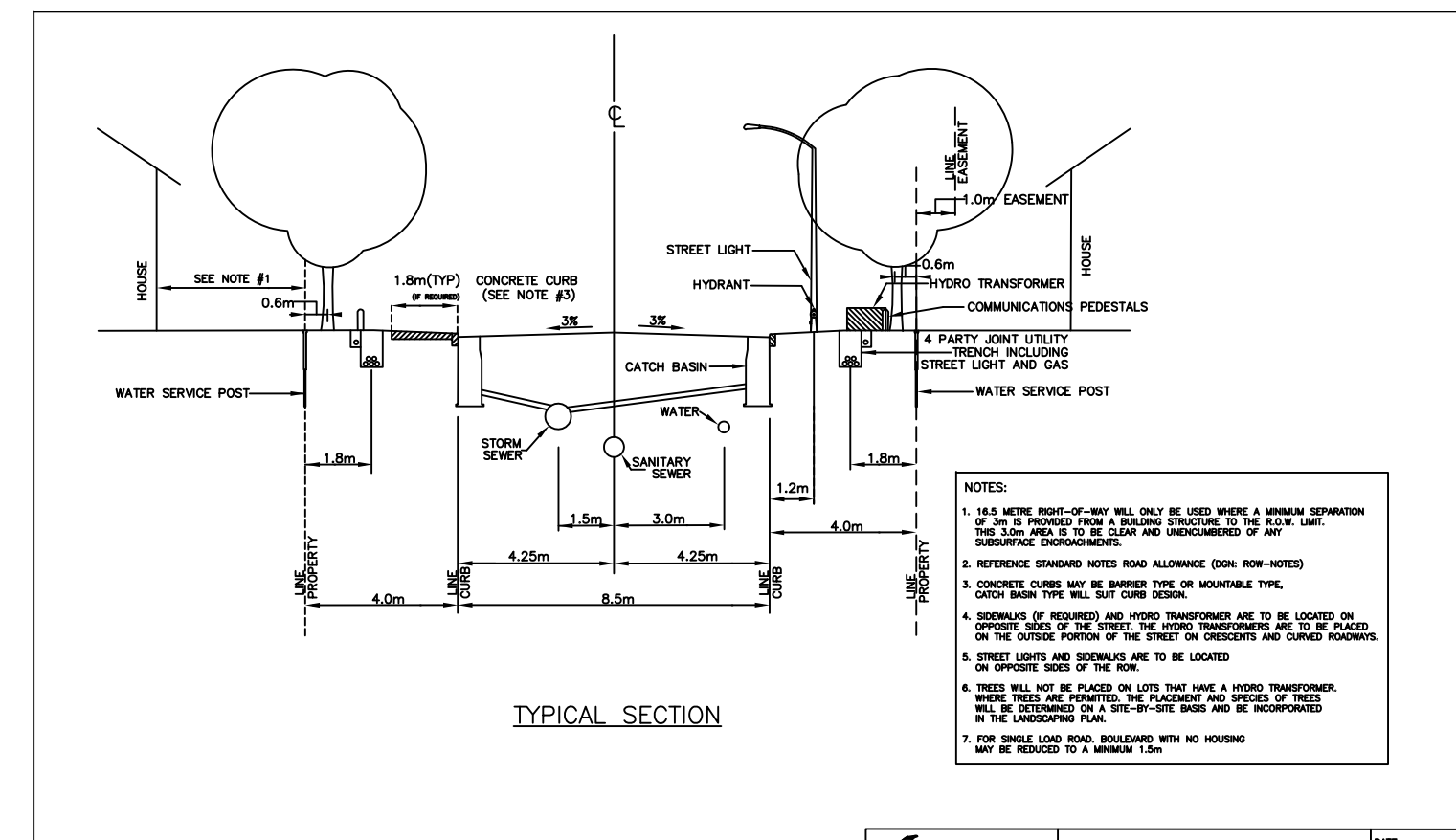
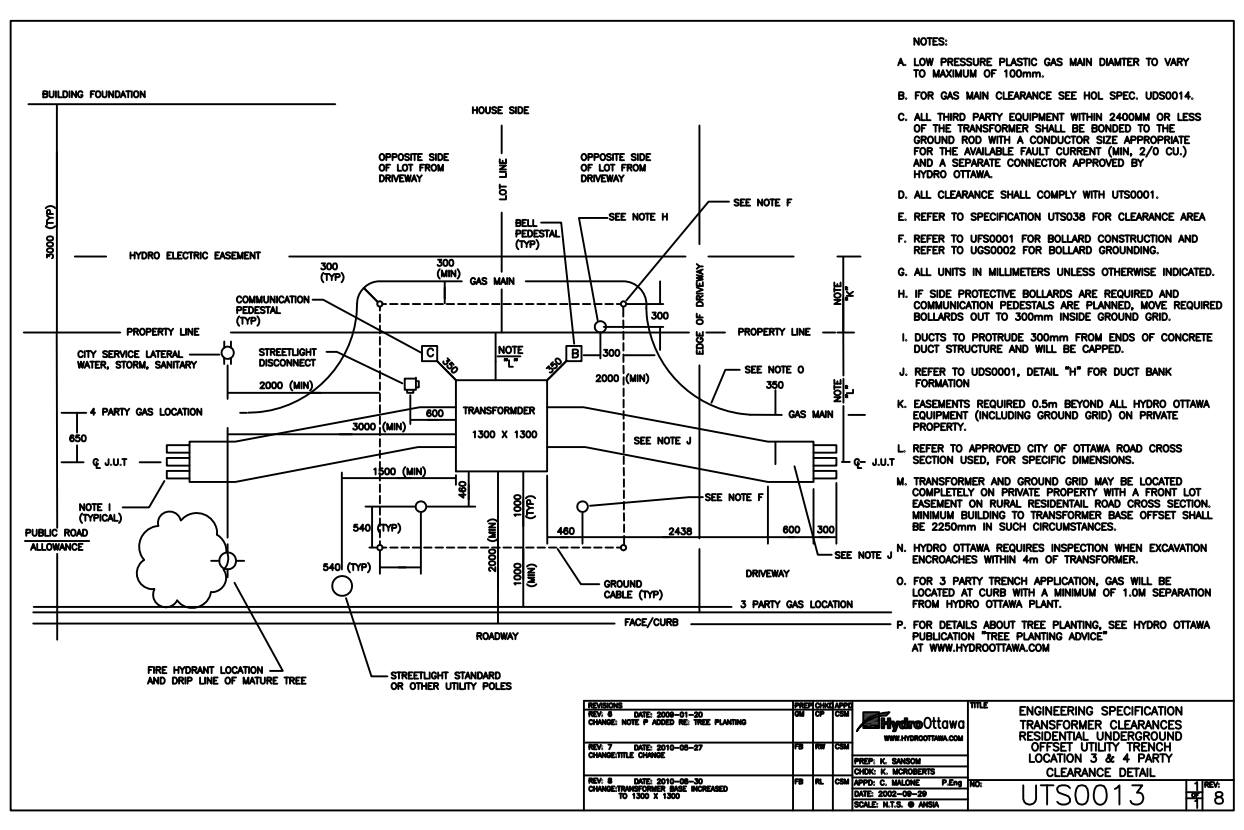


NOTES:

- UTILITY LINES SHALL BE PLACED AT LEAST 150mm FROM ALL EXISTING UNDERGROUND SERVICES.
- STREET LIGHTS SHALL BE PLACED AT LEAST 150mm FROM ALL EXISTING UNDERGROUND SERVICES.
- STREET LIGHTS SHALL BE PLACED AT LEAST 150mm FROM ALL EXISTING UNDERGROUND SERVICES.
- STREET LIGHTS SHALL BE PLACED AT LEAST 150mm FROM ALL EXISTING UNDERGROUND SERVICES.
- STREET LIGHTS SHALL BE PLACED AT LEAST 150mm FROM ALL EXISTING UNDERGROUND SERVICES.
- STREET LIGHTS SHALL BE PLACED AT LEAST 150mm FROM ALL EXISTING UNDERGROUND SERVICES.

NO.	REVISION DESCRIPTION	DATE	BY
3	RE-ISSUED FOR APPROVAL	14/02/17	SMC
2	ISSUED FOR APPROVAL	13/12/16	SMC
1	ISSUED FOR REVIEW	25/11/15	SMC

- GENERAL NOTES:**
- CONTRACTOR TO VERIFY LOCATION AND ELEVATIONS OF ALL EXISTING SERVICES AND UTILITIES PRIOR TO ANY CONSTRUCTION. THE CONTRACTOR IS RESPONSIBLE FOR PROTECTION AND REINSTATEMENT.
 - ALL DIMENSIONS ARE IN METERS UNLESS OTHERWISE STATED. ALL DRAWINGS SHOULD NOT BE SCALED BY THE CONTRACTOR. ANY MISSING OR QUESTIONABLE DIMENSIONS ARE TO BE CONFIRMED WITH THE CONSULTANT IN WRITING.
 - CONSTRUCTION SHALL BE IN ACCORDANCE WITH CITY OF OTTAWA AND ONTARIO PROVINCIAL STANDARD DRAWING SUPPLEMENTS WHERE APPLICABLE AND ONTARIO PROVINCIAL STANDARDS SHALL APPLY WHERE NO CITY STANDARDS ARE AVAILABLE. ALL DRAWINGS TO BE CHECKED FOR CONFORMANCE WITH APPLICABLE BUILDING CODES.
 - ANY DISCREPANCIES, INTERPRETATIONS, CHANGES AND ADDITIONS TO THIS PLAN MUST BE BROUGHT TO THE ATTENTION OF THE ENGINEER, WHEN NOTED AND BEFORE PROCEEDING WITH CONSTRUCTION WORKS.
 - GEOTECHNICAL REPORT AVAILABLE FROM OWNER. ALL DISTURBED AREAS TO BE REINSTATED TO EQUAL OR BETTER CONDITION. ALL NEW WORK SHALL TIE INTO EXISTING.
 - THE PLACEMENT OF SERVICES AND UTILITIES AS SHOWN ON THE PLANS ARE FOR ILLUSTRATION PURPOSES ONLY AND SHOULD NOT BE SCALED FROM THE PLANS. ALL REQUIRED MUNICIPAL, PROVINCIAL, AND UTILITY-SPECIFIC STANDARDS FOR INSTALLATION AND REQUIRED CLEARANCES MUST BE MET. WHERE DISCREPANCIES ARE FOUND, THEY MUST BE BROUGHT TO THE ATTENTION OF THE ENGINEER BEFORE PROCEEDING WITH CONSTRUCTION WORKS.



Ottawa RESIDENTIAL ROAD 16.5m ROAD ALLOWANCE 4 PARTY JOINT USE TRENCH

NOTES:

THE POSITION OF ALL POLE LINES, CONDUITS, WATERMANS, SEWERS AND OTHER UNDERGROUND AND OVERGROUND UTILITIES AND STRUCTURES IS NOT NECESSARILY SHOWN ON THE CONTRACT DRAWINGS, AND WHERE SHOWN, THE ACCURACY OF THE POSITION OF SUCH UTILITIES AND STRUCTURES IS NOT GUARANTEED. BEFORE STARTING WORK, DETERMINE THE EXACT LOCATION OF ALL SUCH UTILITIES AND STRUCTURES AND ASSUME ALL LIABILITY FOR DAMAGE TO THEM.

NO.	REVISION DESCRIPTION	DATE	BY
3	RE-ISSUED FOR APPROVAL	14/02/17	SMC
2	ISSUED FOR APPROVAL	13/12/16	SMC
1	ISSUED FOR REVIEW	25/11/15	SMC

SCALE

HORIZ. 1:500



Robinson Land Development
350 PALLADIUM DRIVE
KANATA, ONTARIO K2V 1A8
TELEPHONE (613) 592-6060

DESIGN	JHB
CHECKED	SMC
DRAWN	JHB
CHECKED	SMC
APPROVED	SMC

BORRELLO SUBDIVISION

514 KOCHAR DRIVE
OTTAWA, ON
K2C 4H3

COMPOSITE UTILITY PLAN

PROJECT NO.	14057
SURVEY	RLD
DATED	NOVEMBER 2015
DWG. No.	14057-CUP1