

UTILITY NOTES:

- THIS PLAN HAS BEEN PREPARED FOR CONCEPTUAL PURPOSES ONLY. REFER TO THE FOLLOWING PLANS, PREPARED BY THE UTILITY COMPANIES FOR DETAILS.
 - HYDRO ONE: MARK RAYCROFT (613-298-1348)
 - ENBRIDGE GAS: RUSSELL LONG (613-203-4624)
 - ROGERS CABLE: AL ROICHAUD (613-978-9788)
 - BELL CANADA: LEE SAUNDERS (613-601-8134)
 - CANADA POST: WILLY BERRENS
 - STREETLIGHTS: ROBERT PUCCI (CITY OF OTTAWA) (613-296-7271)
- CONTRACTOR TO CONTACT RESPECTIVE UTILITY COMPANIES TO DETERMINE EXACT LOCATION OF EXISTING UTILITIES BEFORE COMMENCING WORK. CONTRACTOR TO ASSUME ALL LIABILITY FOR DAMAGE TO EX. UTILITIES.
- CONTRACTOR SHALL EXCAVATE, BACKFILL, AND RESTORE ALL SURFACES TO EXISTING CONDITIONS FOR HYDRO PRIMARY, BELL, AND ROGERS CABLES.
- TEMPORARILY COIL ALL SERVICE WIRES ON A 50mm X 100mm X 2.4m WOODEN POST 0.5m INSIDE PROPERTY LINE FOR EACH UNIT WITH ENOUGH CONDUCTOR TO ALLOW FOR COMPLETION OF TRENCHING AND BUILDING CONNECTION.
- ALL HYDRO TRANSFORMERS TO HAVE 3.0m (MIN.) CLEARANCE FROM DRIVEWAYS.
- ALL STREETLIGHTS TO HAVE 1.5m (MIN.) CLEARANCE FROM DRIVEWAYS.
- HYDRO METERS ARE TO BE LOCATED ON DRIVEWAY SIDE OF HOUSE.
- SECONDARY SERVICE TRENCHES ARE 4-PARTY JOINT USE TRENCH.

STREETLIGHTING REQUIREMENTS:

STREET	PROPOSED SPEED	CLASSIFICATION	PAVEMENT WIDTH	TARGET LIGHTING LEVELS
CHANDELLE PVT	50 km/h	LOCAL ROAD	8.5m	MARKER LIGHTING
STREET THREE	50 km/h	LOCAL ROAD	8.5m	MARKER LIGHTING
ALBERT BOYD PVT	50 km/h	LOCAL ROAD	8.0m	MARKER LIGHTING

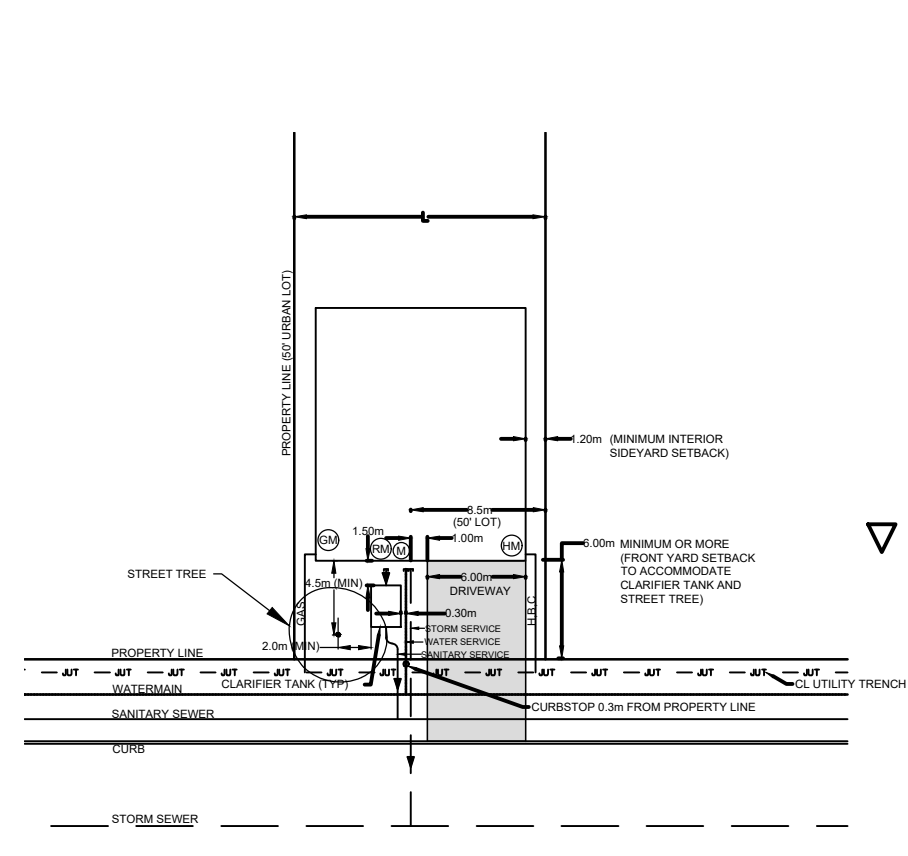
POLE:

STREETLIGHT	POLE SERIES	POLE LENGTH	POLE HEIGHT ABOVE GRADE	MANUFACTURING CATALOG #
SL 1B2-1 - SL 1B2-3	HAMPTON	9.1m	7.6m	HA-300-B-3-BE-20-X-OTT

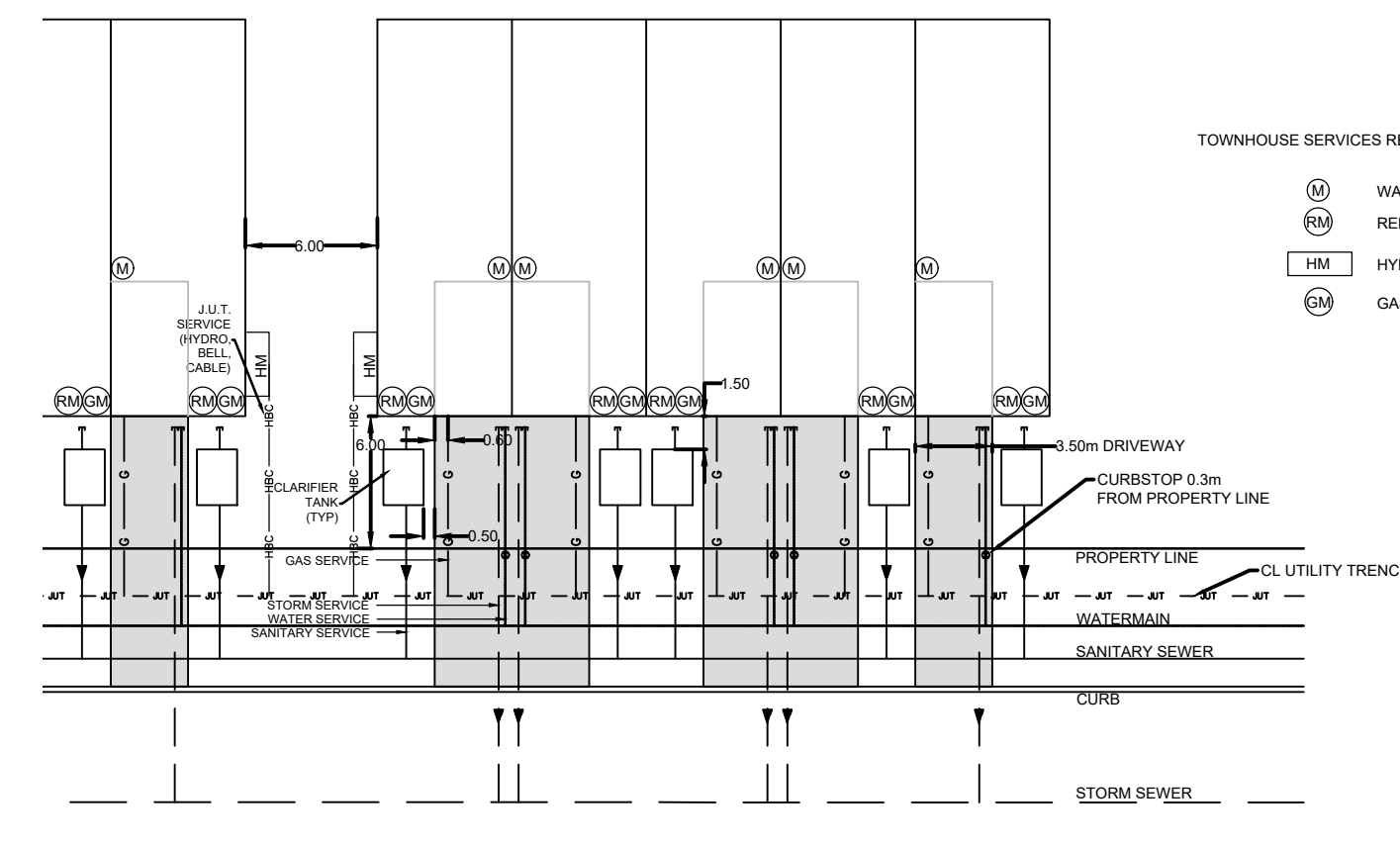
LIGHT FIXTURE LEGEND:

STREETLIGHT	TYPE	VOLTAGE	LAMP (WATTS)	MANUFACTURING CATALOG #
SL 1B-1 - SL 1B-5	GULLWING G18 (SINGLE)	120	50	G18-DIM-1-2-50LA-4835-WW-120-BLK-PCR7

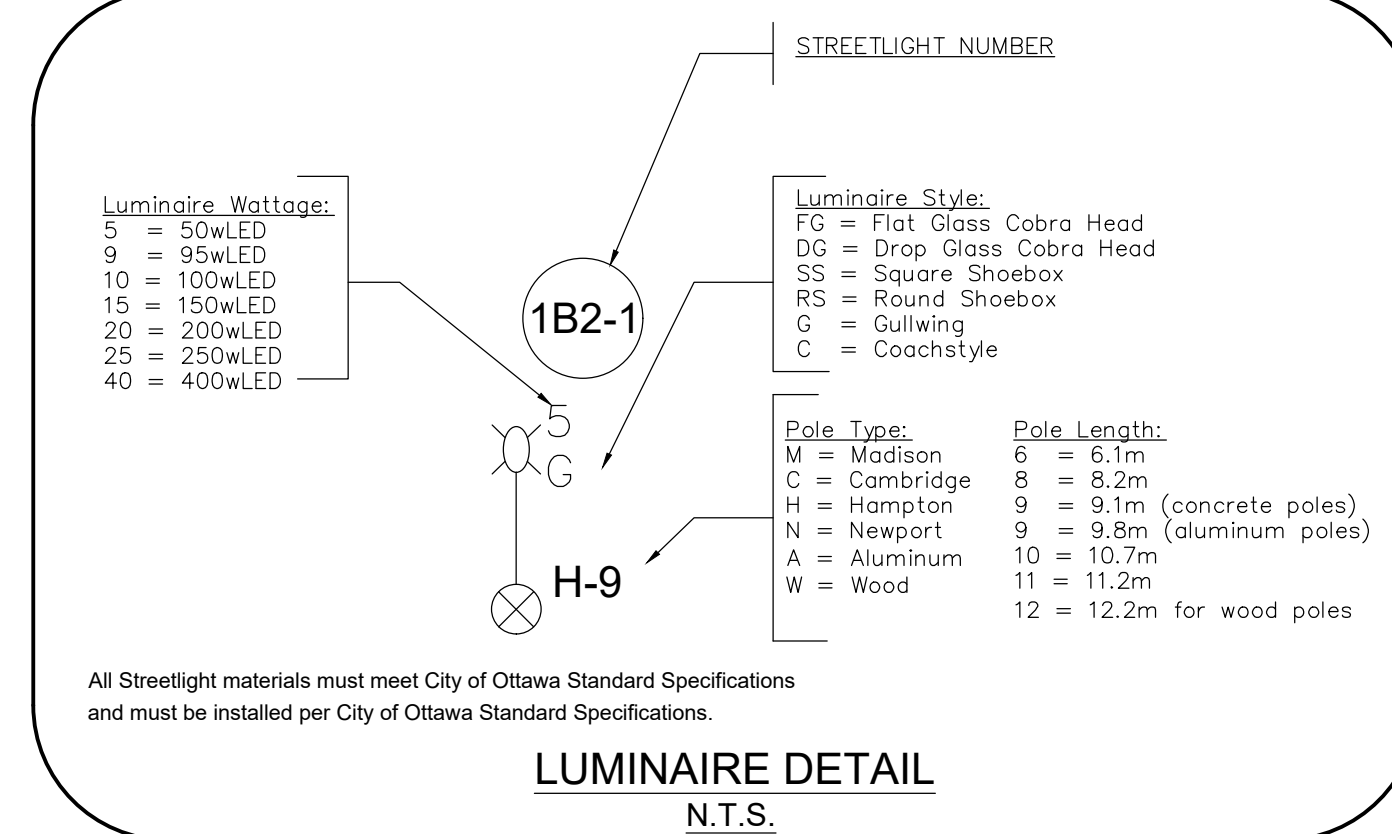
*FIXTURE COMPLETE WITH TELENIA TELECELL T2A1N-B-3 STREETLIGHT CONTROLLER
 *GULLWING G18 LUMINAIRE INCLUDES BRACKET



TYPICAL LOT SERVICING DETAIL - URBAN LOT
N.T.S.

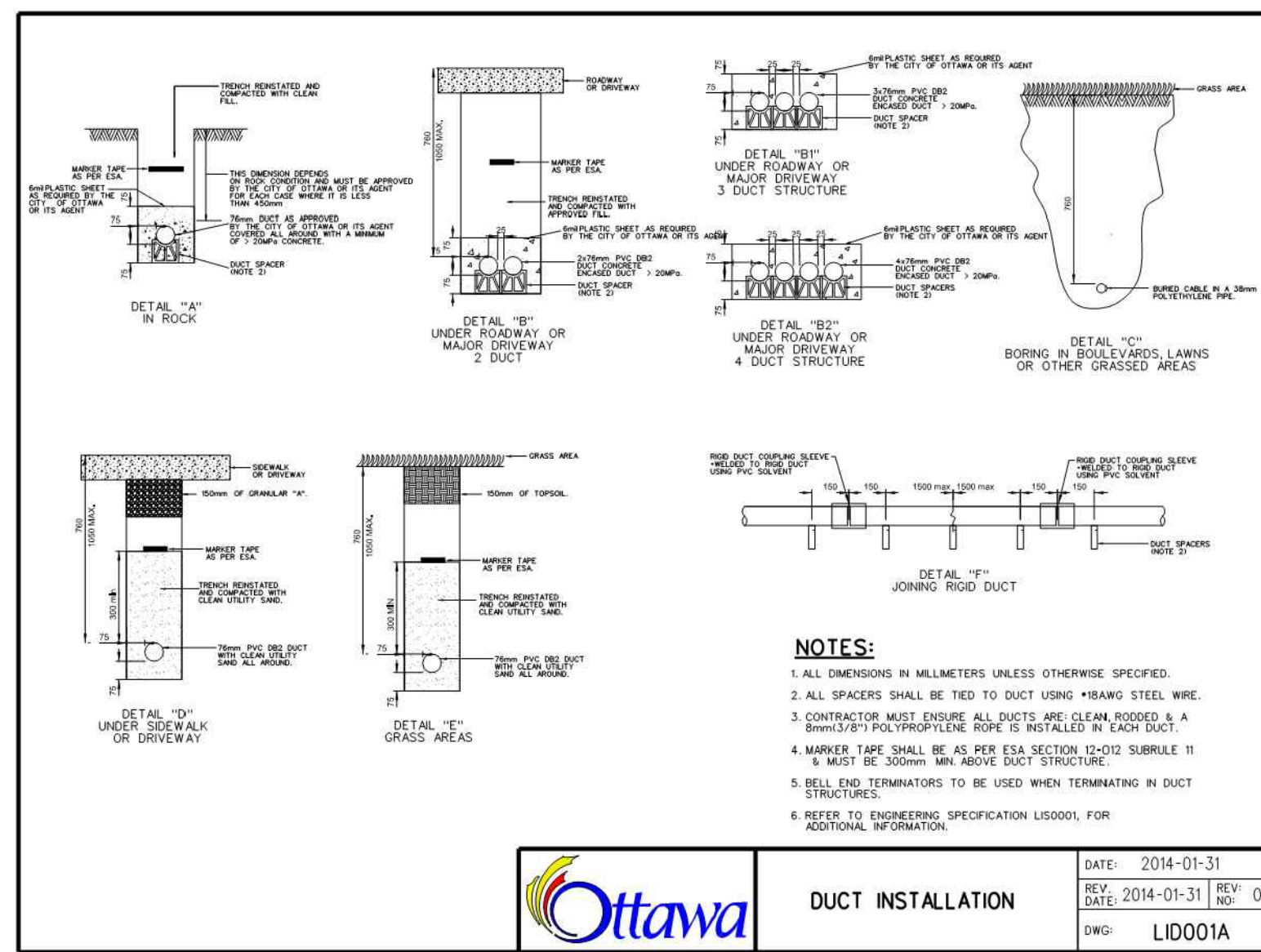


TYPICAL LOT SERVICING DETAIL - TOWNHOUSE
N.T.S.



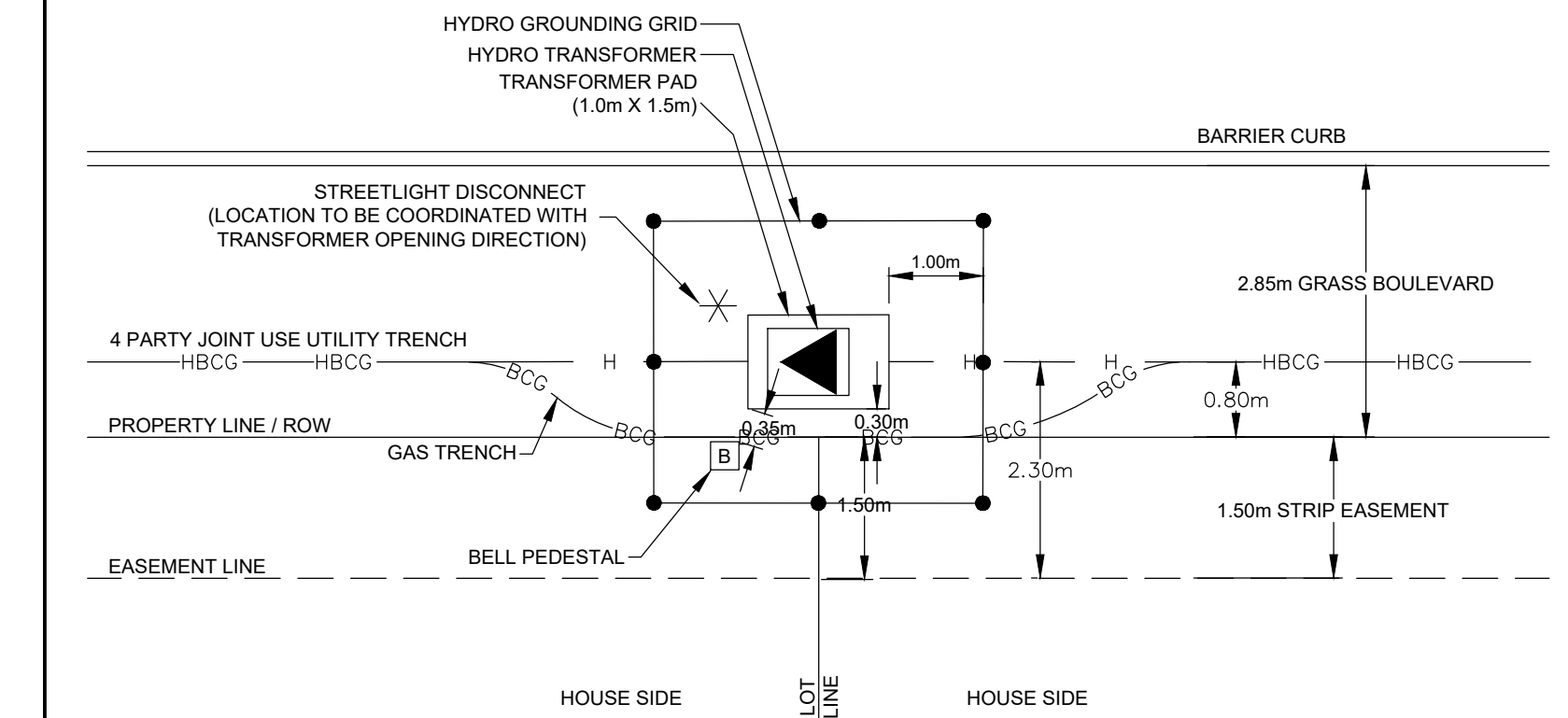
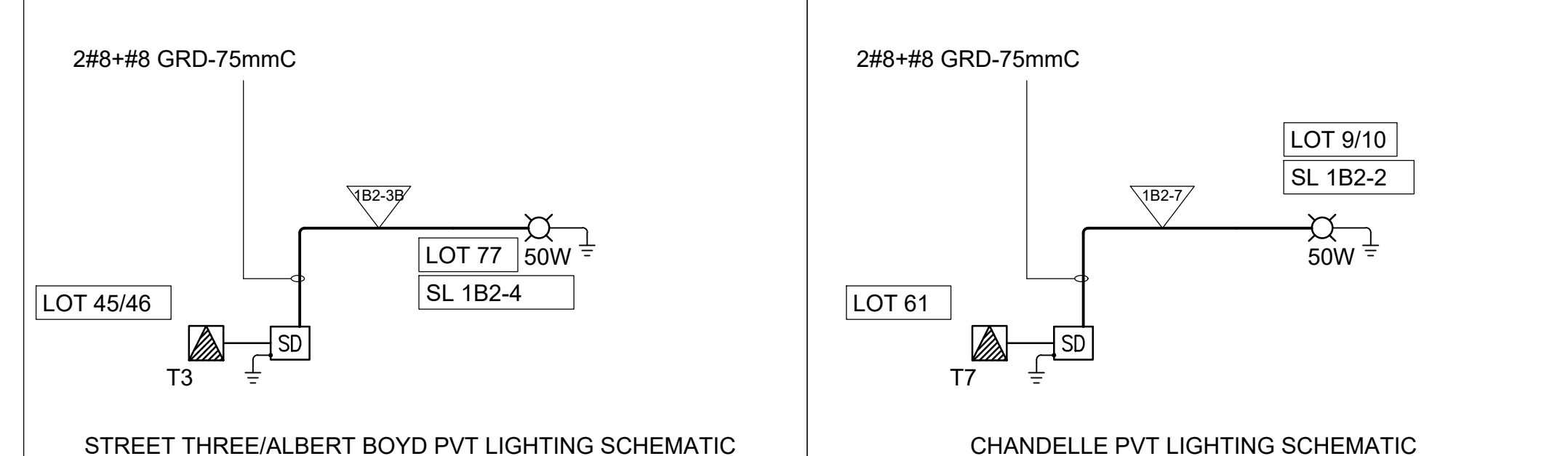
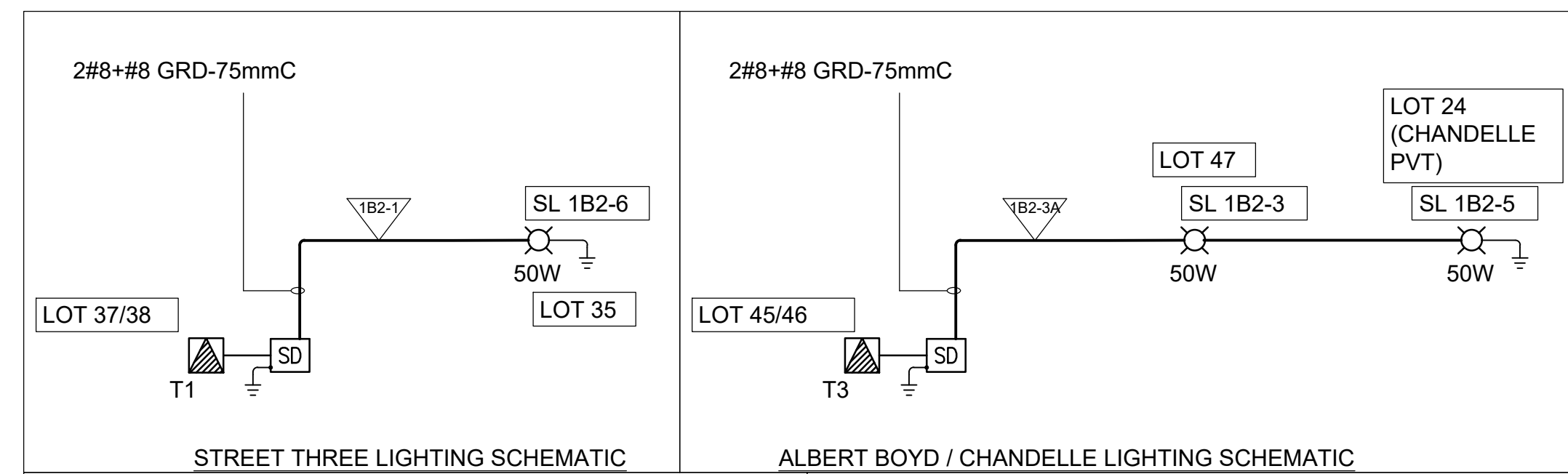
All Streetlight materials must meet City of Ottawa Standard Specifications and must be installed per City of Ottawa Standard Specifications.

LUMINAIRE DETAIL
N.T.S.

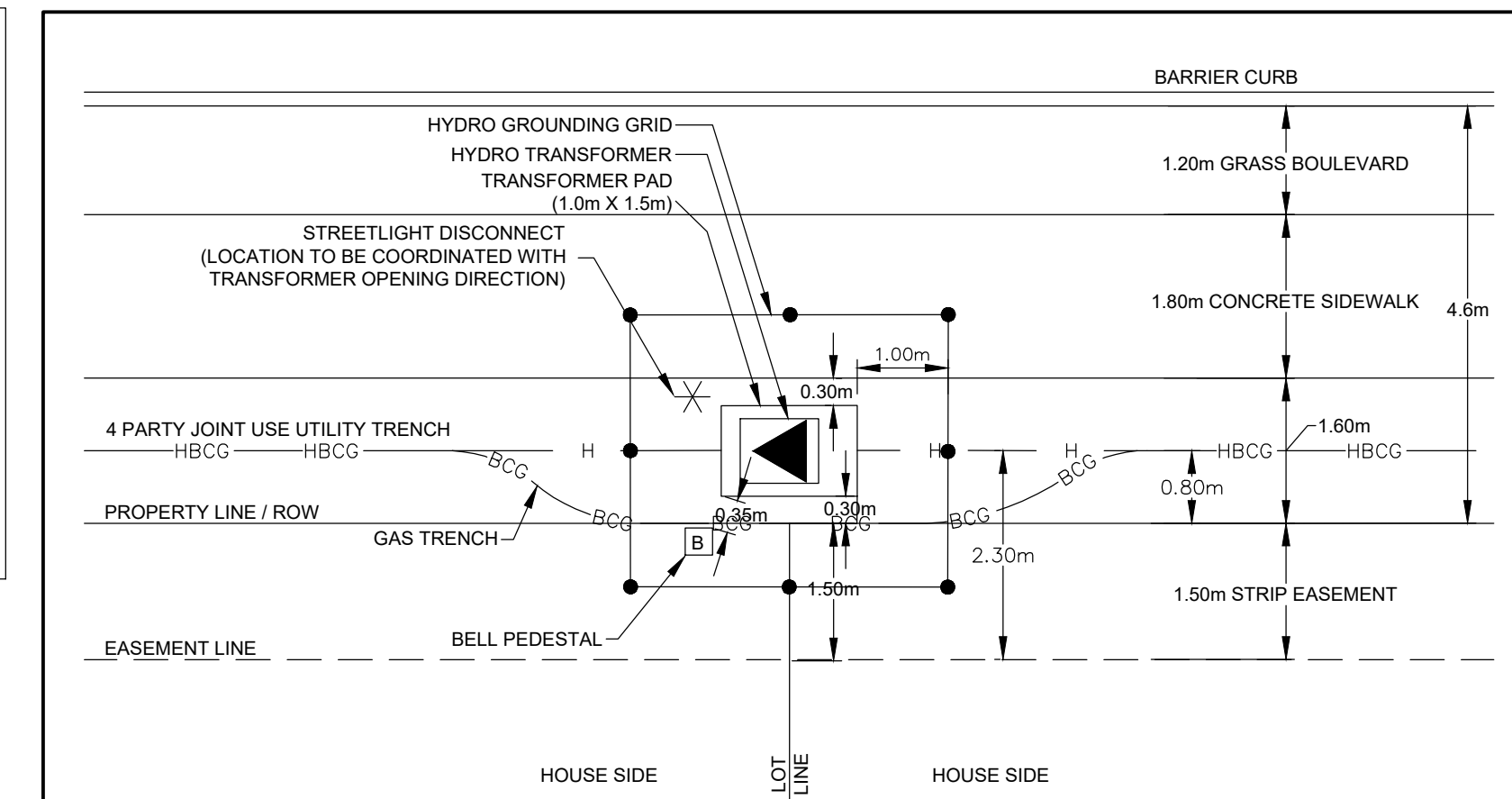


- NOTES:**
- ALL DIMENSIONS IN MILLIMETERS UNLESS OTHERWISE SPECIFIED.
 - ALL SPACERS SHALL BE TIED TO DUCT USING M8MM STEEL WIRE.
 - CONTRACTOR MUST PROVIDE ALL THE NECESSARY MATERIALS TO BE USED FOR THE DUCT INSTALLATION.
 - WARRANTY SHALL BE AS PER EA SECTION 4.4. THE CONTRACTOR SHALL BE RESPONSIBLE FOR THE DUCT INSTALLATION.
 - ALL THE TRANSFORMERS TO BE USED WITH TRENCHING IN DUCT.
 - REFER TO ENGINEERING SPECIFICATION LOGBOOK FOR ADDITIONAL INFORMATION.

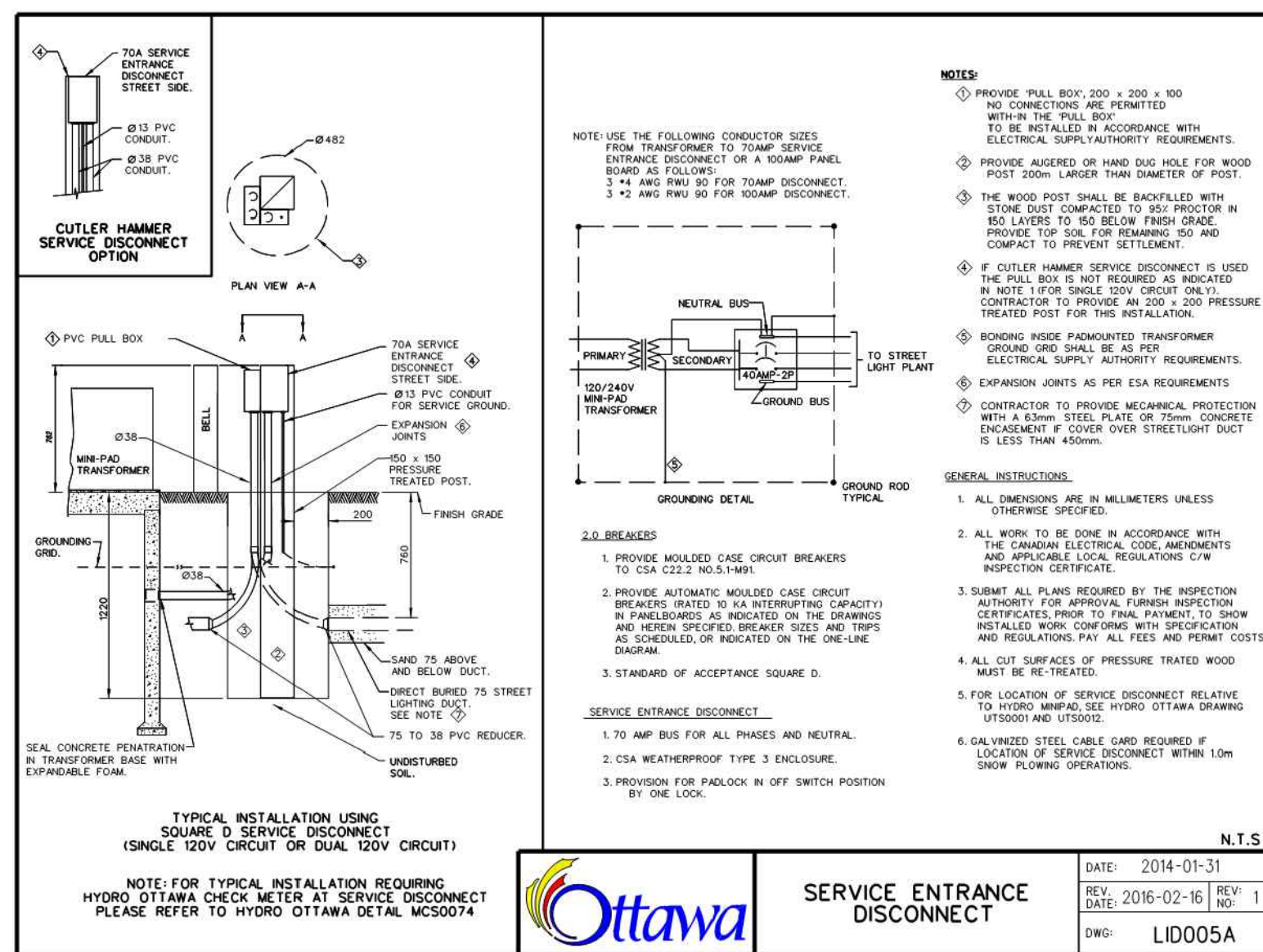
Ottawa DUCT INSTALLATION DATE: 2014-01-31
 DATE: 2014-01-31
 DWG: L10001A



TYPICAL PLAN VIEW OF UTILITY LOCATIONS - SIDE OPEN TRANSFORMER (NO SIDEWALK)
SCALE 1:75

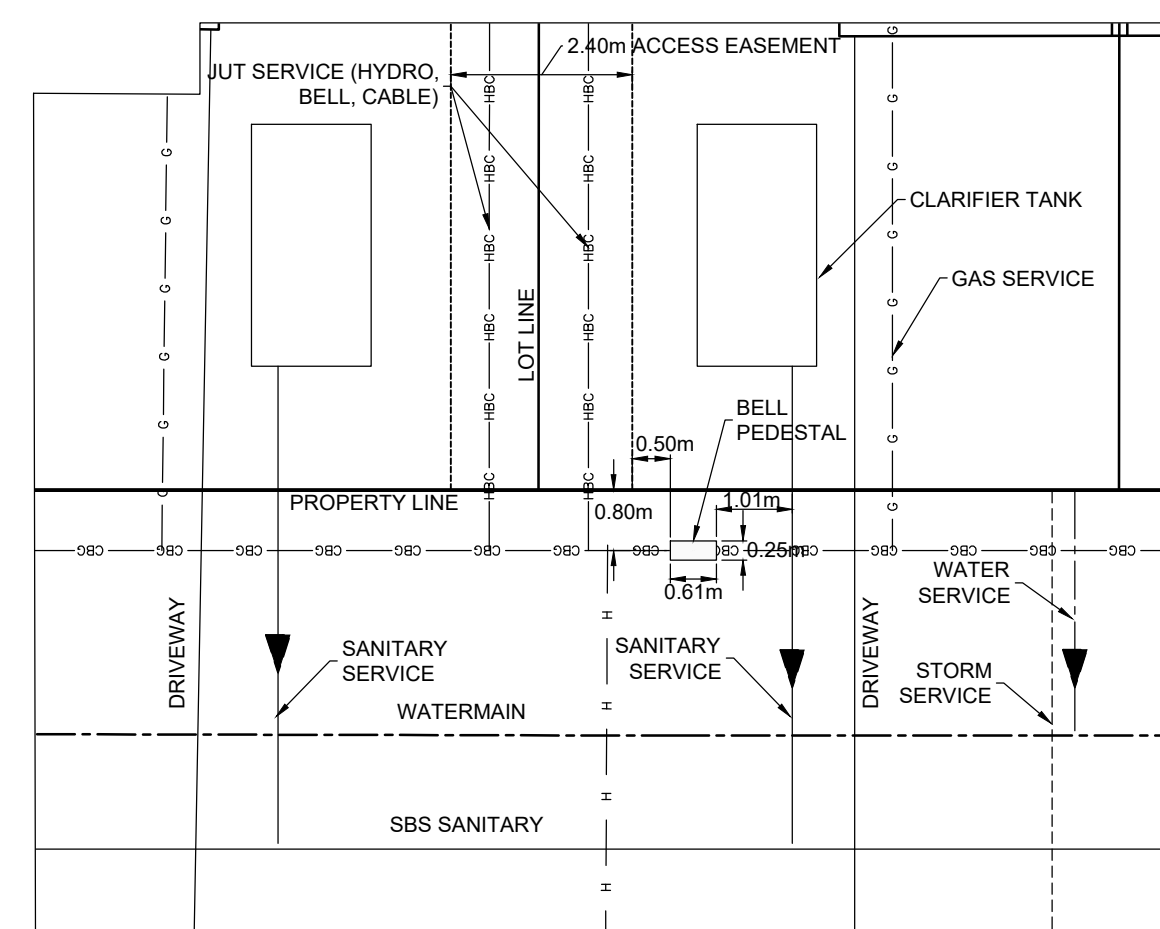


TYPICAL PLAN VIEW OF UTILITY LOCATIONS - SIDE OPEN TRANSFORMER (AT SIDEWALKS)
SCALE 1:75

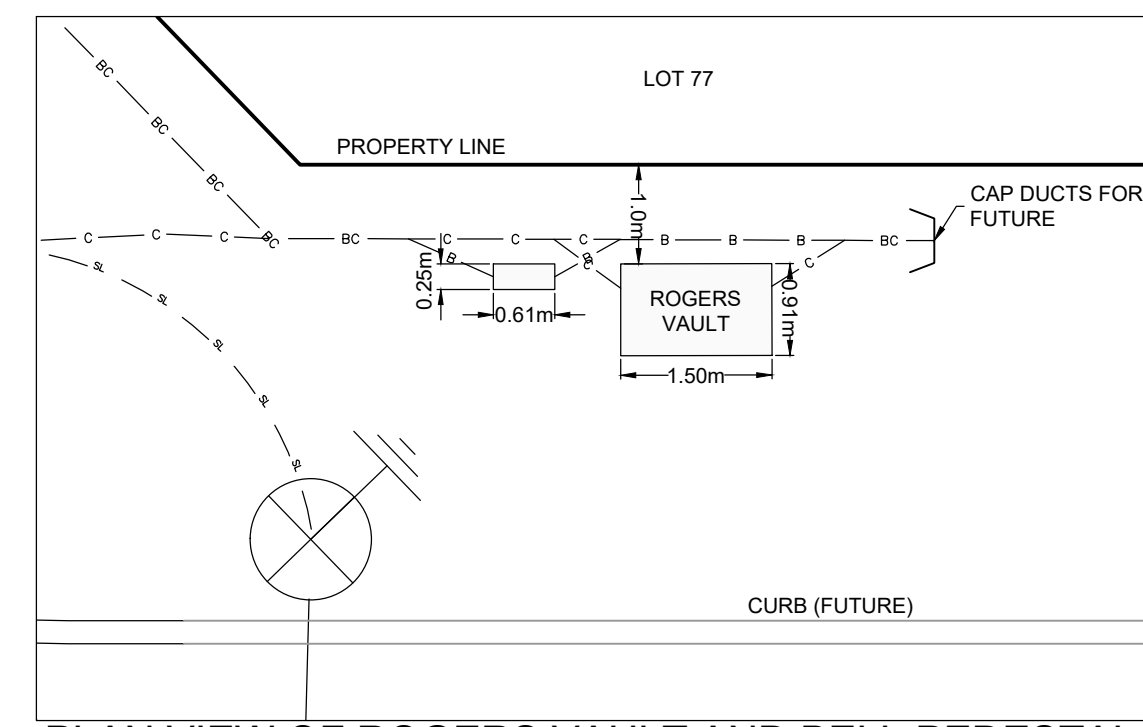


- NOTES:**
- PROVIDE 1/2" DIA. (50.8mm) X 200 X 200 X 100mm CONCRETE PAD FOR TRANSFORMER TO BE INSTALLED ON TOP OF THIS PAD. THE PAD SHALL BE FINISHED TO MATCH THE FINISH OF THE ADJACENT DRIVEWAY OR PAVEMENT.
 - PROVIDE 1/2" DIA. (50.8mm) X 200 X 200 X 100mm CONCRETE PAD FOR TRANSFORMER TO BE INSTALLED ON TOP OF THIS PAD. THE PAD SHALL BE FINISHED TO MATCH THE FINISH OF THE ADJACENT DRIVEWAY OR PAVEMENT.
 - PROVIDE 1/2" DIA. (50.8mm) X 200 X 200 X 100mm CONCRETE PAD FOR TRANSFORMER TO BE INSTALLED ON TOP OF THIS PAD. THE PAD SHALL BE FINISHED TO MATCH THE FINISH OF THE ADJACENT DRIVEWAY OR PAVEMENT.
 - PROVIDE 1/2" DIA. (50.8mm) X 200 X 200 X 100mm CONCRETE PAD FOR TRANSFORMER TO BE INSTALLED ON TOP OF THIS PAD. THE PAD SHALL BE FINISHED TO MATCH THE FINISH OF THE ADJACENT DRIVEWAY OR PAVEMENT.
 - PROVIDE 1/2" DIA. (50.8mm) X 200 X 200 X 100mm CONCRETE PAD FOR TRANSFORMER TO BE INSTALLED ON TOP OF THIS PAD. THE PAD SHALL BE FINISHED TO MATCH THE FINISH OF THE ADJACENT DRIVEWAY OR PAVEMENT.
 - PROVIDE 1/2" DIA. (50.8mm) X 200 X 200 X 100mm CONCRETE PAD FOR TRANSFORMER TO BE INSTALLED ON TOP OF THIS PAD. THE PAD SHALL BE FINISHED TO MATCH THE FINISH OF THE ADJACENT DRIVEWAY OR PAVEMENT.

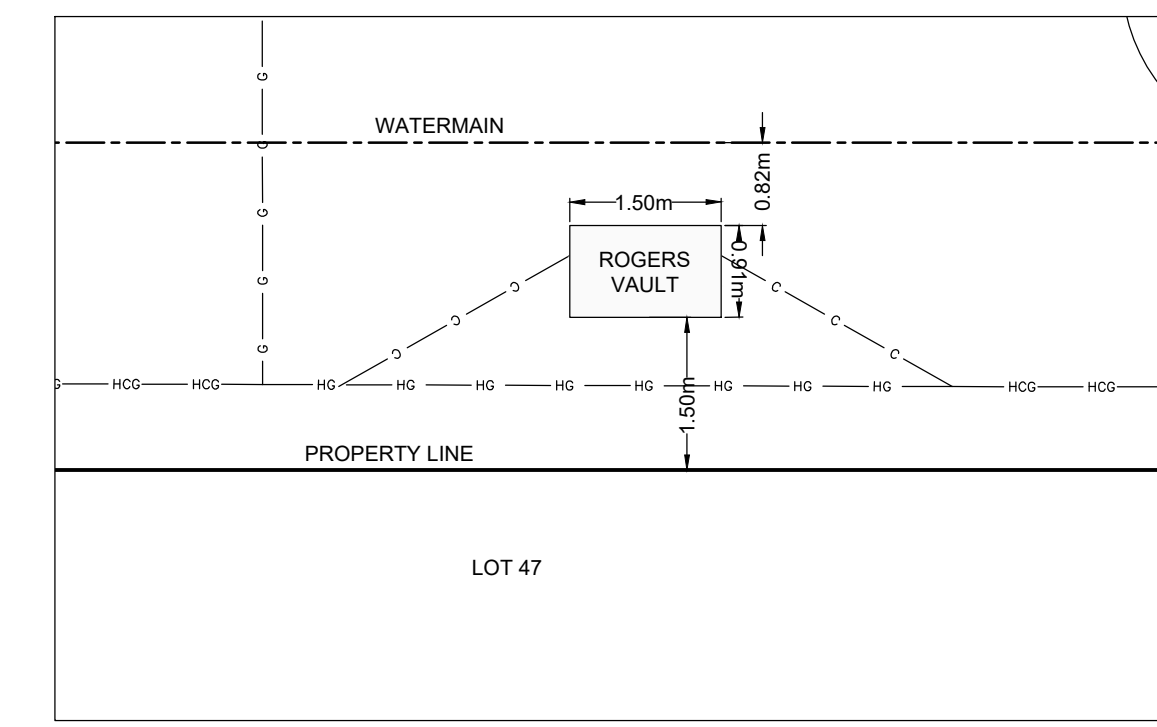
Ottawa SERVICE ENTRANCE DISCONNECT DATE: 2014-01-31
 DATE: 2014-01-31
 DWG: L10005A



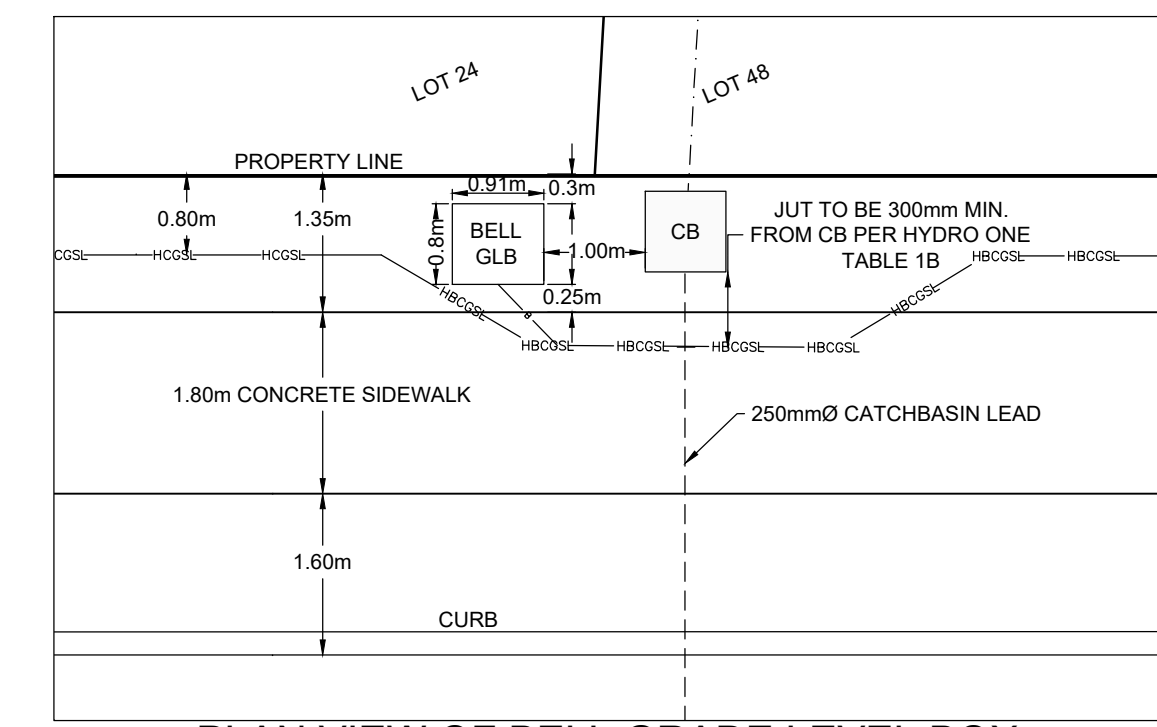
TYPICAL PLAN VIEW OF BELL PEDESTAL (TOWNHOUSES)
SCALE 1:100



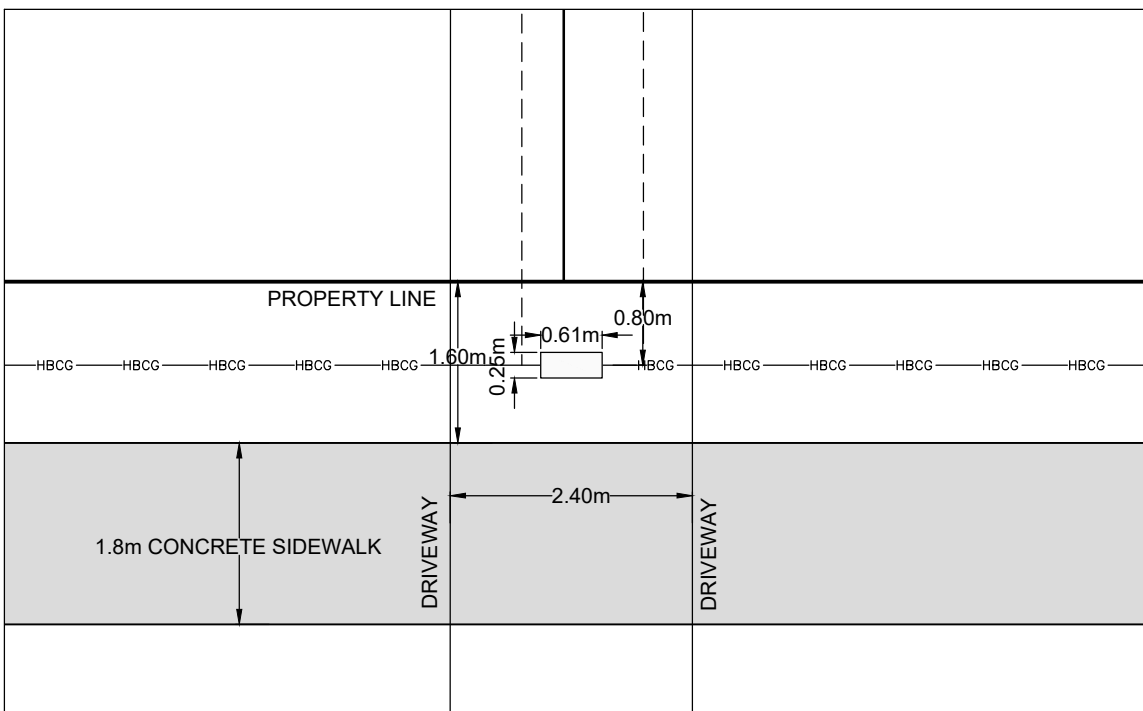
PLAN VIEW OF ROGERS VAULT AND BELL PEDESTAL AT LOT 77
SCALE 1:75



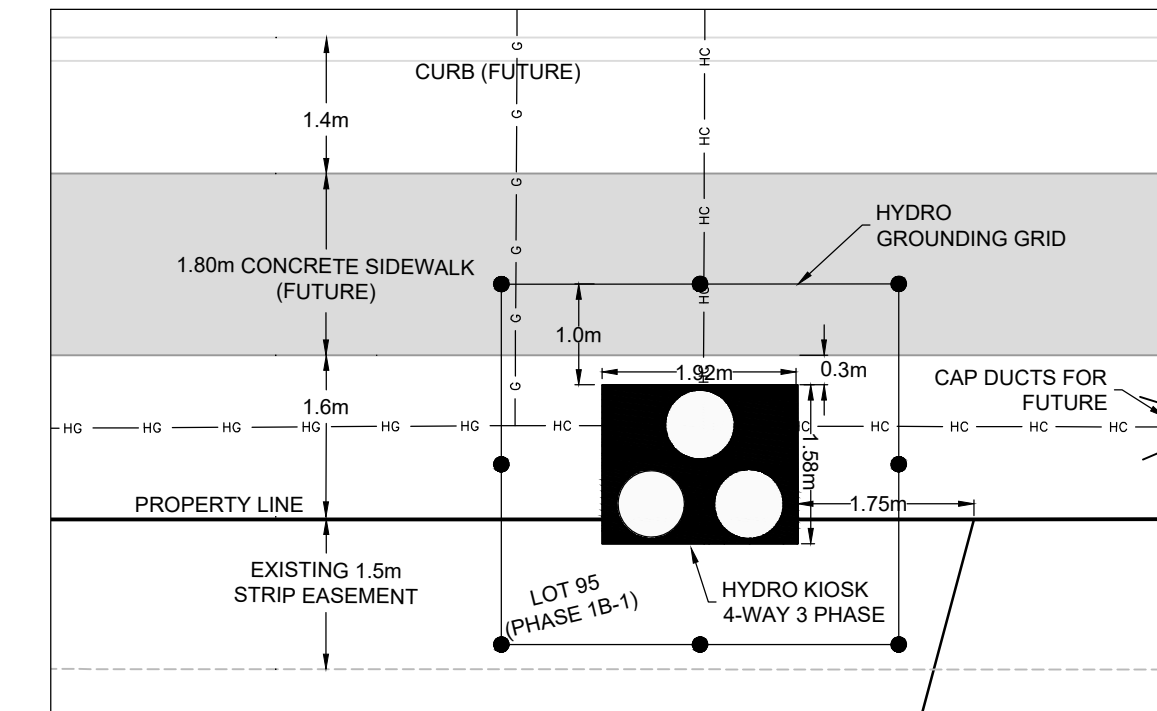
PLAN VIEW OF ROGERS VAULT AT LOT 47
SCALE 1:75



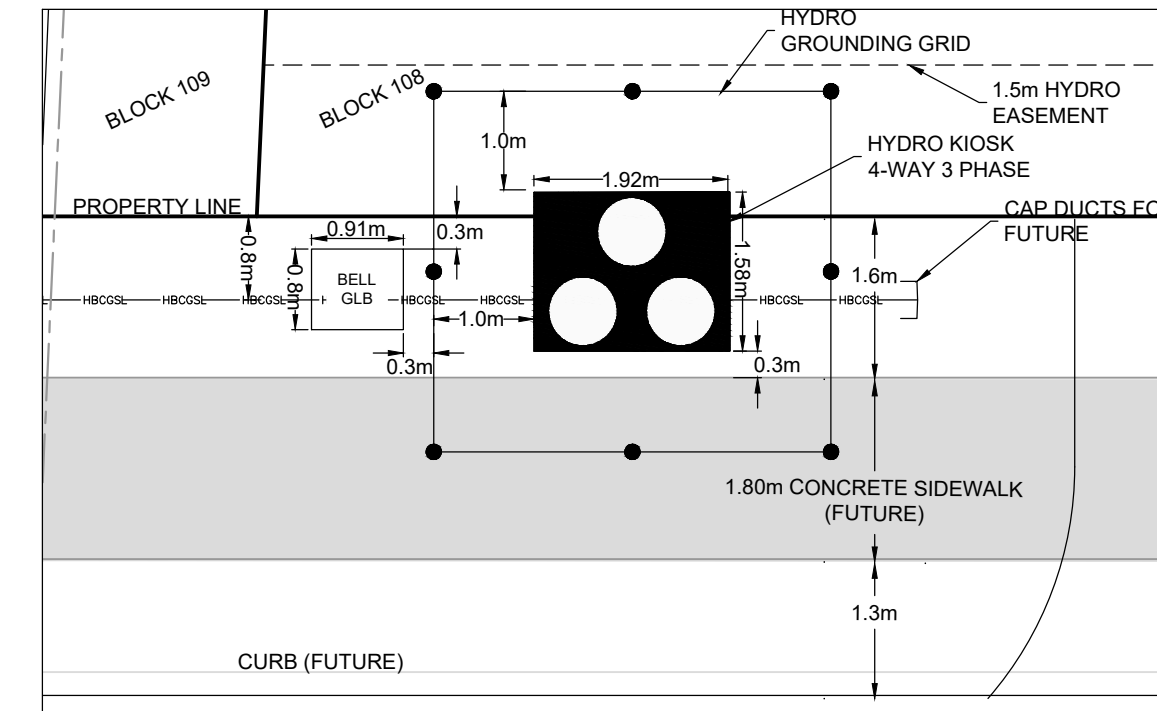
PLAN VIEW OF BELL GRADE LEVEL BOX AT LOTS 24 / 48
SCALE 1:75



TYPICAL PLAN VIEW OF BELL PEDESTAL (SINGLES)
SCALE 1:75



PLAN VIEW OF HYDRO KIOSK AT EXISTING LOT 95 (EXISTING PHASE 1B-1)
SCALE 1:75



PLAN VIEW OF BELL GRADE LEVEL BOX & HYDRO KIOSK AT BLOCK 108
SCALE 1:75

NOTE: THE POSITION OF ALL POLE LINES, CONDUITS, WATERMANS, SEWERS AND OTHER UNDERGROUND AND OVERGROUND UTILITIES AND STRUCTURES IS NOT NECESSARILY SHOWN ON THE CONTRACT DRAWINGS, AND WHERE SHOWN, THE ACCURACY OF THE POSITION OF SUCH UTILITIES AND STRUCTURES IS NOT GUARANTEED. BEFORE STARTING WORK, DETERMINE THE EXACT LOCATION OF ALL SUCH UTILITIES AND STRUCTURES AND ASSUME ALL LIABILITY FOR DAMAGE TO THEM.

SCALE		FOR REVIEW ONLY	
AS SHOWN	MNP	CHECKED	ARM
	ARM	DRAWN	MNP
	ARM	CHECKED	ARM
	XXX	APPROVED	XXX

No.	REVISION	DATE	BY
3	REVISED PER EASEMENT COORDINATION	JUN 24/24	ARM
2	REVISED PER UTILITY CIRCULATION #2	MAY 31/24	ARM
1	ISSUED WITH UTILITY CIRCULATION #2	APR 4/24	ARM

NOVATECH
 Engineers, Planners & Landscape Architects
 Suite 200, 240 Michael Copland Drive
 Ottawa, Ontario, Canada K2M 1P6
 Telephone: (613) 254-9643
 Facsimile: (613) 254-5867
 Website: www.novatech-eng.com

LOCATION: CITY OF OTTAWA WEST CAPITAL AIRPARK
 DRAWING NAME: UTILITY AND STREETLIGHT DETAILS - PHASE 1B-2
 PROJECT NO.: 102085-08
 REV: # 3
 DRAWING NO.: 102085-SL1B2