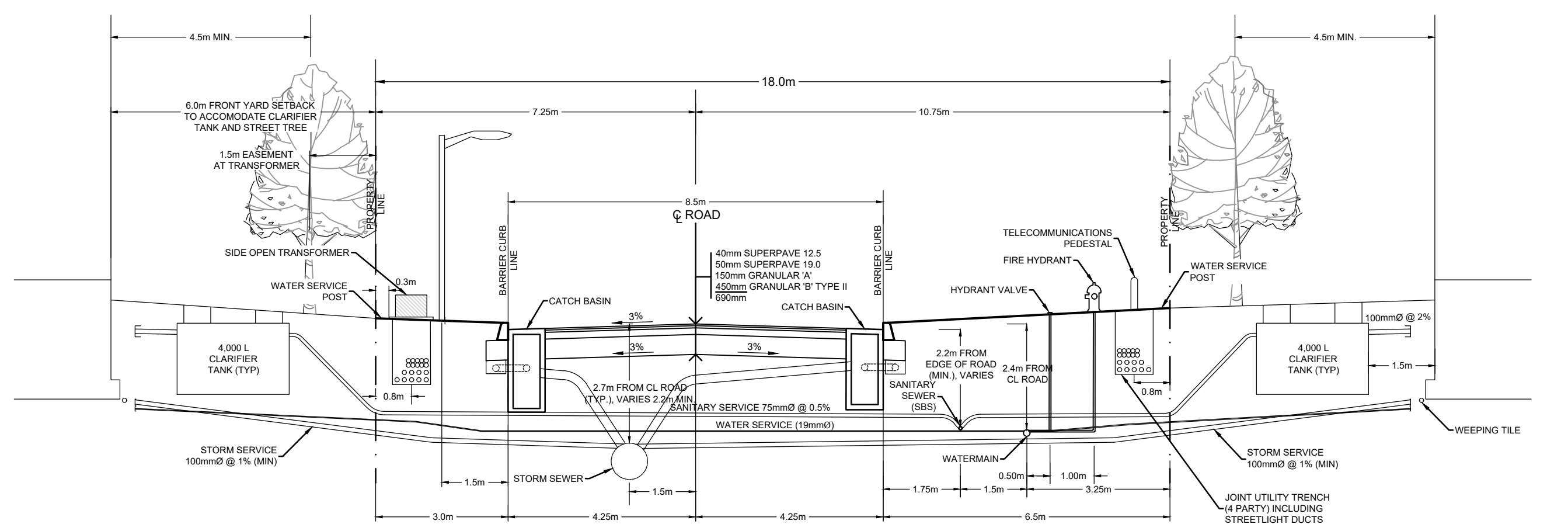
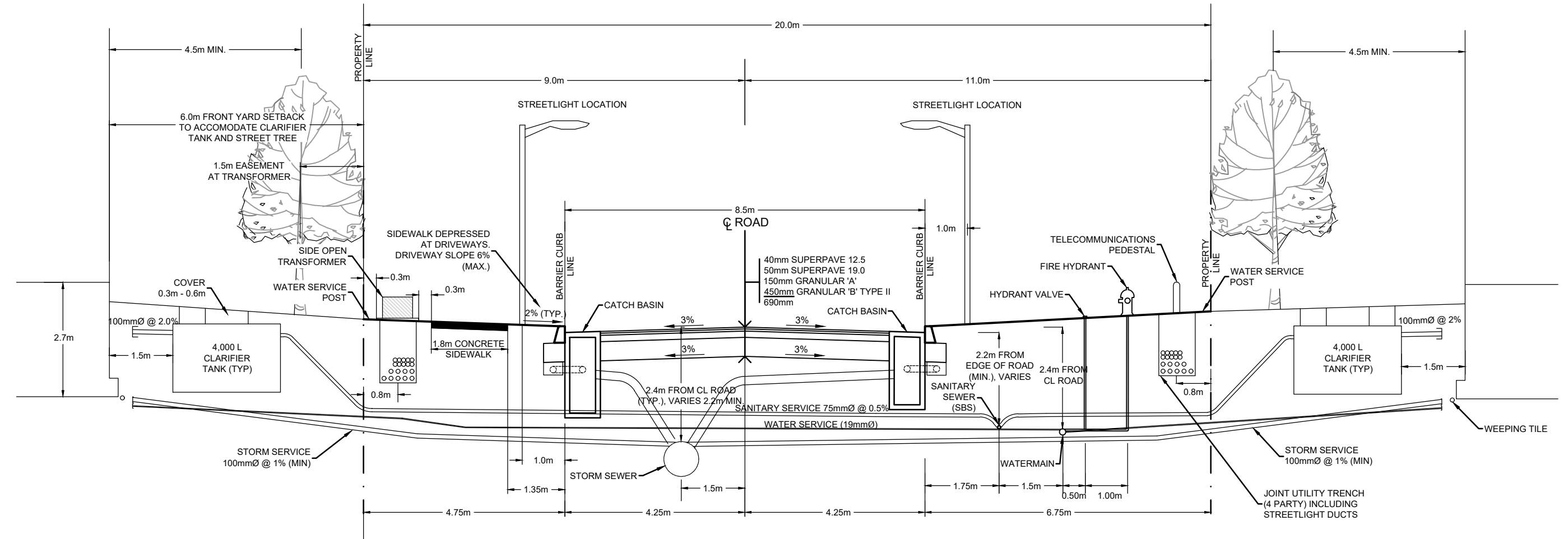


**LEGEND**

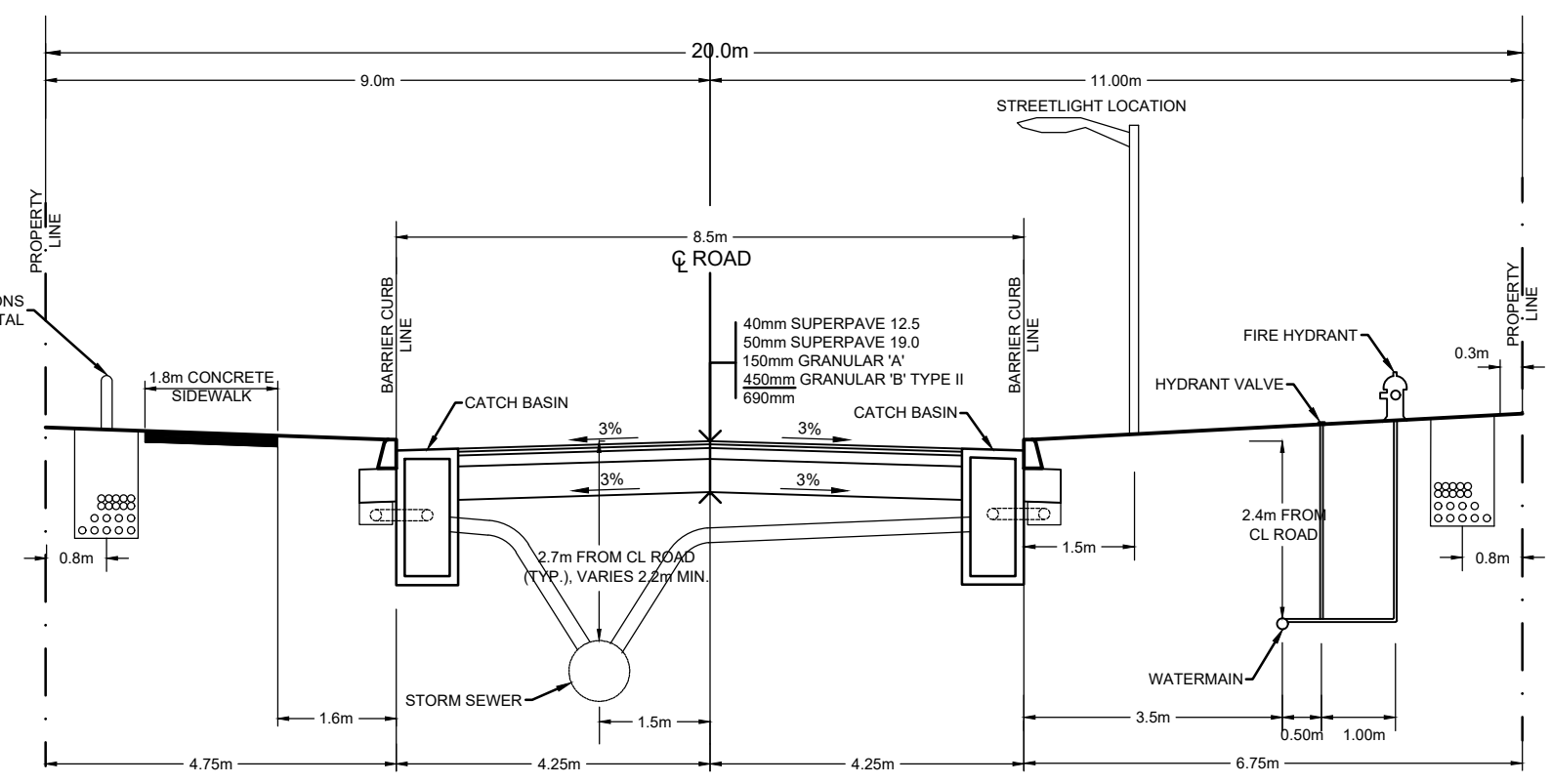
- H — HYDRO PRIMARY TRENCH
- H --- HYDRO SECONDARY TRENCH
- - - EASEMENT
- - - BELL TRENCH
- - - CABLE TRENCH
- - - GAS TRENCH
- - - STREETLIGHT CABLE
- 2H, 2C, 2B, 2G, 2SL, 2S
- 2H, 2C, 2B, 2G, 2SL, 2S
- EXISTING ROAD CROSSING DUCT & NUMBER OF DUCTS
- PROPOSED HYDRO METER BASE
- PROPOSED COMMUNITY MAILBOX
- PROPOSED HYDRO TRANSFORMER
- PROPOSED HYDRO KIOSK 4-WAY
- BELL PEDESTAL
- BELL GROUND LEVEL BOX
- CABLE VAULT (GROUND LEVEL)
- PROPOSED STREETLIGHT
- STREETLIGHT DISCONNECT SWITCH
- GROUNDING
- PROPOSED STREETLIGHT CIRCUIT
- V&V VALVE & VALVE BOX
- REDUCER
- WATERMAIN
- PROPOSED HYDRANT LOCATION COMPLETE WITH VALVES
- SAP 2-D PROPOSED SANITARY SYSTEM ACCESS POINT
- SBS SANITARY PROPOSED SMALL BORE SEWER-SANITARY
- PROPOSED STORM MH & SEWER
- CB 2 PROPOSED ROAD CATCHBASIN & CB LEAD
- RYCB 12 PROPOSED REARWARD CATCHBASIN
- CBMH 10 PROPOSED CATCHBASIN MANHOLE
- PROPOSED WATER SAMPLING STATION
- PROPOSED SERVICE LOCATION
- 1.8m CONCRETE SIDEWALK
- PROPOSED STREET TREE



RESIDENTIAL ROAD 20.0m ROAD ALLOWANCE  
URBAN SECTION 4 PARTY JOINT USE TRENCH  
STREET THREE  
1:100



RESIDENTIAL ROAD 20.0m ROAD ALLOWANCE  
URBAN SECTION 4 PARTY JOINT USE TRENCH  
CHANDELLE PRIVATE  
1:100



RESIDENTIAL ROAD 20.0m ROAD ALLOWANCE  
URBAN SECTION 4 PARTY JOINT USE TRENCH  
ALBERT BOYD PRIVATE  
1:100

NOTE:  
THE POSITION OF ALL POLE LINES, CONDUITS, WATERMANS, SEWERS AND OTHER UNDERGROUND AND OVERGROUND UTILITIES AND STRUCTURES IS NOT NECESSARILY SHOWN ON THE CONTRACT DRAWINGS, AND WHERE SHOWN, THE ACCURACY OF THE POSITION OF SUCH UTILITIES AND STRUCTURES IS NOT GUARANTEED. BEFORE STARTING WORK, DETERMINE THE EXACT LOCATION OF ALL SUCH UTILITIES AND STRUCTURES AND ASSUME ALL LIABILITY FOR DAMAGE TO THEM.

No.	REVISION	DATE	BY
7.	REVISED PER EASEMENT COORDINATION	JUN 24/24	ARM
6.	REVISED PER CIRCULATION #2	MAY 31/24	ARM
5.	REVISED PER PRELIMINARY DESIGNS	APR 4/24	ARM
4.	ISSUED FOR COORDINATION	FEB 2/24	ARM
3.	ISSUED WITH ADDENDUM #2 (NO CHANGES)	JAN 5/24	ARM
2.	ISSUED FOR TENDER	DEC 7/23	ARM
1.	ISSUED TO HYDRO ONE	MAY 3/23	ARM

SCALE  
1:500

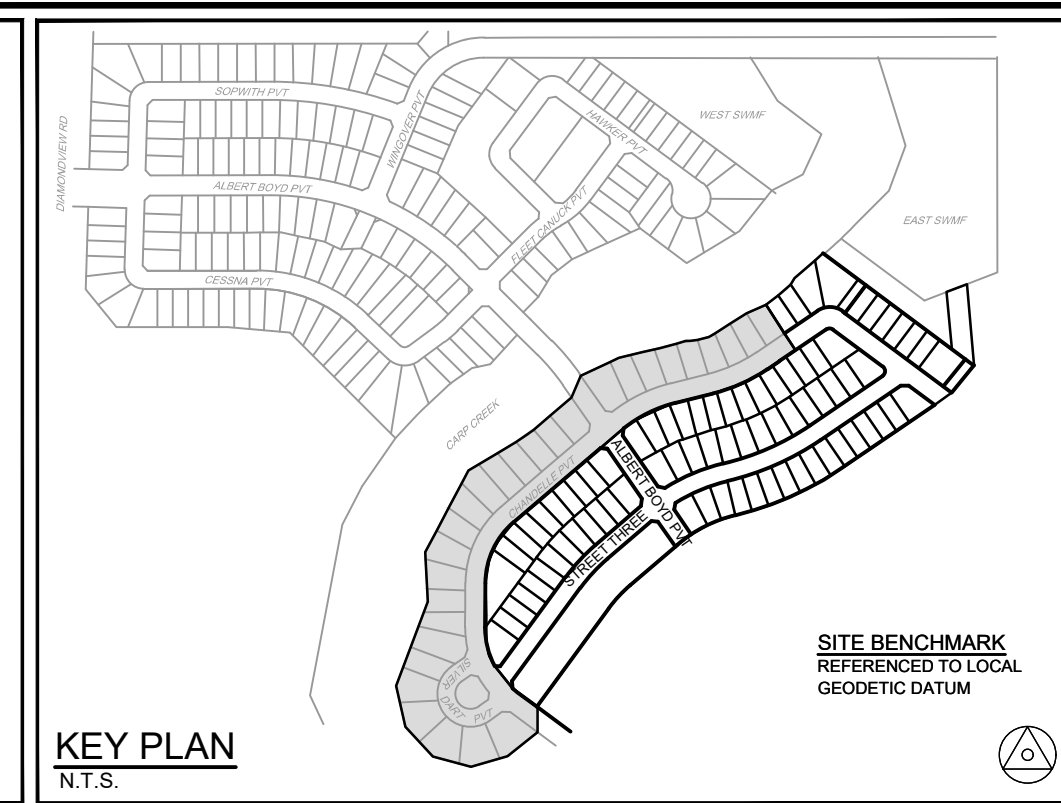
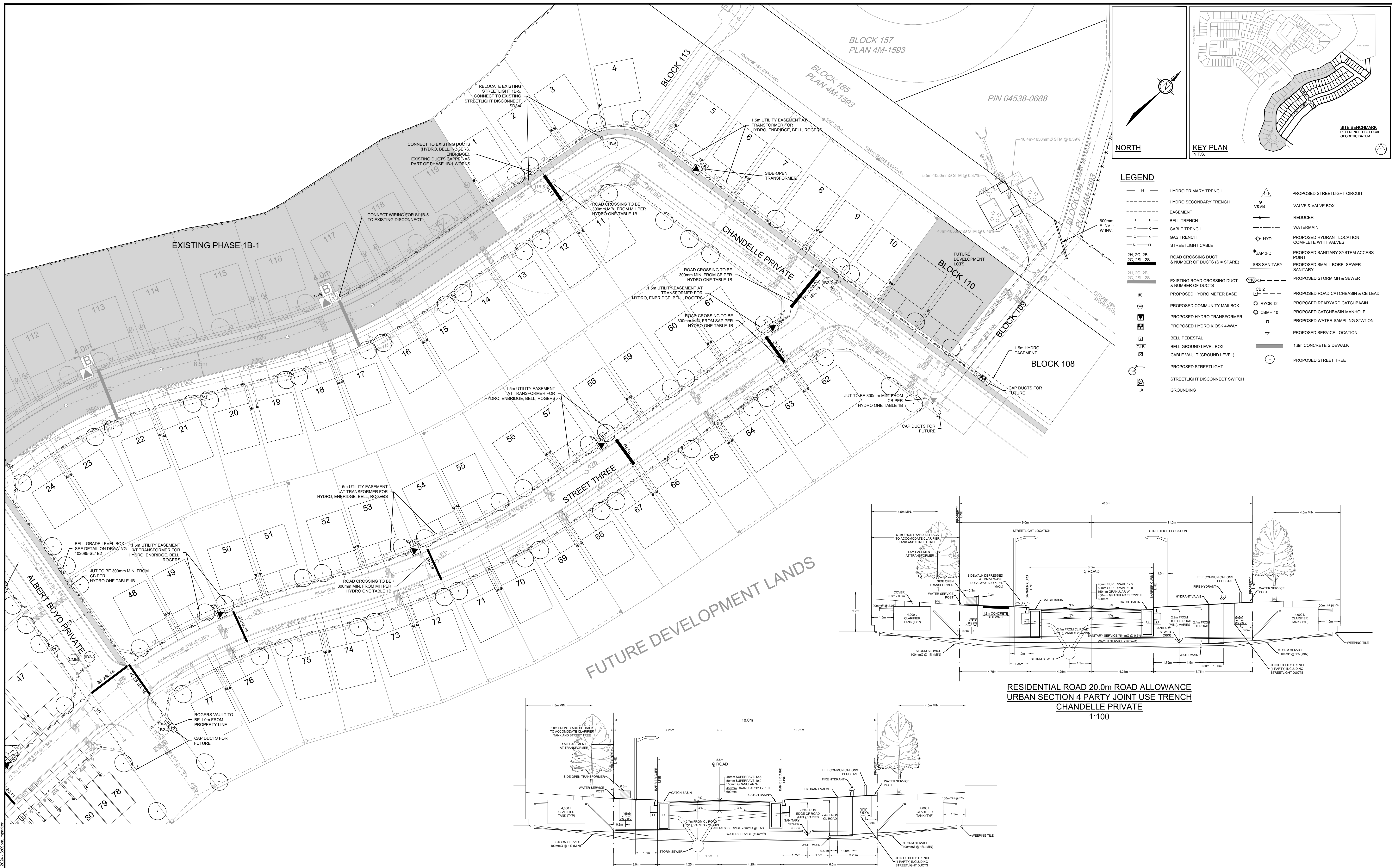
FOR REVIEW ONLY	
DESIGN	ARM
CHECKED	ARM
DRAWN	MNP
CHECKED	ARM
APPROVED	ARM

**NOVATECH**  
Engineers, Planners & Landscape Architects  
Suite 200, 240 Michael Cowpland Drive  
Ottawa, Ontario, Canada K2M 1P8  
Telephone: (613) 254-9643  
Facsimile: (613) 254-5867  
Website: www.novatech-eng.com

LOCATION  
CITY OF OTTAWA  
WEST CAPITAL AIRPARK

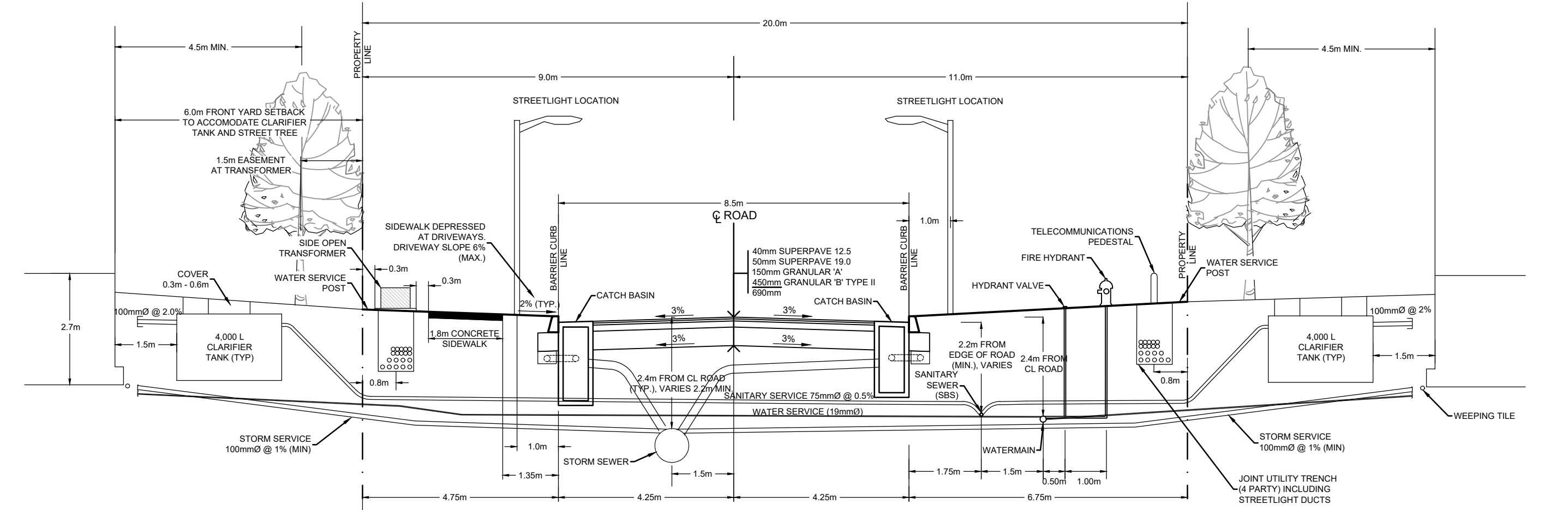
DRAWING NAME  
COMPOSITE UTILITY PLAN  
- PHASE 1B-2

PROJECT No.: 102085-08  
REV: REV #7  
DRAWING No.: 102085-U13

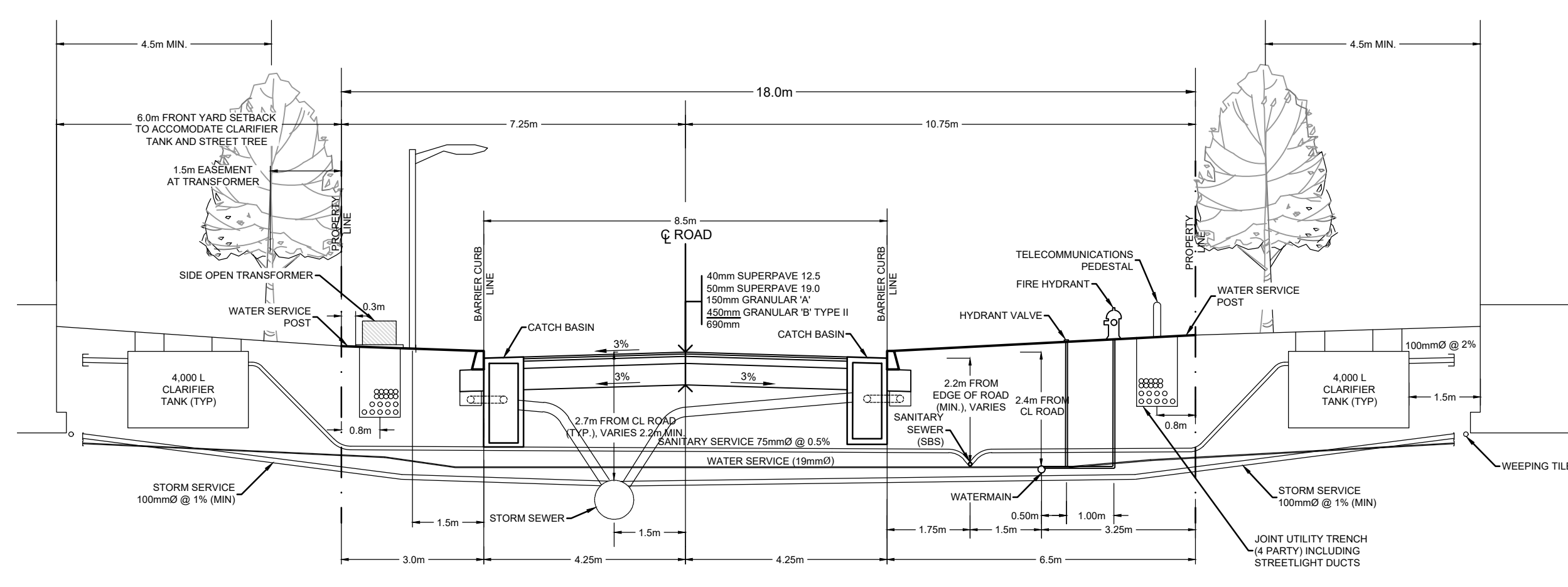


**LEGEND**

— H —	HYDRO PRIMARY TRENCH	⚡	PROPOSED STREETLIGHT CIRCUIT
— S —	HYDRO SECONDARY TRENCH	⊕	VALVE & VALVE BOX
— E —	EASEMENT	→	REDUCER
— B —	BELL TRENCH	— W —	WATERMAIN
— C —	CABLE TRENCH	⊕	PROPOSED HYDRANT LOCATION COMPLETE WITH VALVES
— G —	GAS TRENCH	⊕	PROPOSED SANITARY SYSTEM ACCESS POINT
— S —	STREETLIGHT CABLE	⊕	PROPOSED SMALL BORE SEWER-SANITARY
2H, 2C, 2B, 2S, 2SL, 2S	ROAD CROSSING DUCT & NUMBER OF DUCTS (S = SPARE)	⊕	PROPOSED STORM MH & SEWER
⊕	EXISTING ROAD CROSSING DUCT & NUMBER OF DUCTS	⊕	PROPOSED ROAD CATCHBASIN & CB LEAD
⊕	PROPOSED HYDRO METER BASE	⊕	PROPOSED REARWARD CATCHBASIN
⊕	PROPOSED COMMUNITY MAILBOX	⊕	PROPOSED CATCHBASIN MANHOLE
⊕	PROPOSED HYDRO TRANSFORMER	⊕	PROPOSED WATER SAMPLING STATION
⊕	PROPOSED HYDRO KIOSK 4-WAY	⊕	PROPOSED SERVICE LOCATION
⊕	BELL PEDESTAL	⊕	1.8m CONCRETE SIDEWALK
⊕	BELL GROUND LEVEL BOX	⊕	PROPOSED STREET TREE
⊕	CABLE VAULT (GROUND LEVEL)		
⊕	PROPOSED STREETLIGHT		
⊕	STREETLIGHT DISCONNECT SWITCH		
⊕	GROUNDING		



**RESIDENTIAL ROAD 20.0m ROAD ALLOWANCE  
URBAN SECTION 4 PARTY JOINT USE TRENCH  
CHANDELLE PRIVATE  
1:100**



**RESIDENTIAL ROAD 20.0m ROAD ALLOWANCE  
URBAN SECTION 4 PARTY JOINT USE TRENCH  
STREET THREE  
1:100**

**NOTE:**  
THE POSITION OF ALL POLE LINES, CONDUITS, WATERMANS, SEWERS AND OTHER UNDERGROUND AND OVERGROUND UTILITIES AND STRUCTURES IS NOT NECESSARILY SHOWN ON THE CONTRACT DRAWINGS, AND WHERE SHOWN, THE ACCURACY OF THE POSITION OF SUCH UTILITIES AND STRUCTURES IS NOT GUARANTEED. BEFORE STARTING WORK, DETERMINE THE EXACT LOCATION OF ALL SUCH UTILITIES AND STRUCTURES AND ASSUME ALL LIABILITY FOR DAMAGE TO THEM.

No.	REVISION	DATE	BY
7.	REVISED PER EASEMENT COORDINATION	JUN 24/24	ARM
6.	REVISED PER CIRCULATION #2	MAY 31/24	ARM
5.	REVISED PER PRELIMINARY DESIGNS	APR 4/24	ARM
4.	ISSUED FOR COORDINATION	FEB 2/24	ARM
3.	ISSUED WITH ADDENDUM #2 (NO CHANGES)	JAN 5/24	ARM
2.	ISSUED FOR TENDER	DEC 7/23	ARM
1.	ISSUED TO HYDRO ONE	MAY 3/23	ARM

SCALE		FOR REVIEW ONLY	
1:500	1:500	DESIGN	
0 5 10 15 20		CHECKED	
		DRAWN	MNP
		CHECKED	ARM
		APPROVED	

**NOVATECH**  
Engineers, Planners & Landscape Architects  
Suite 200, 240 Michael Cowpland Drive  
Ottawa, Ontario, Canada K2M 1P8  
Telephone: (613) 254-9643  
Facsimile: (613) 254-5867  
Website: www.novatech-eng.com

LOCATION: CITY OF OTTAWA WEST CAPITAL AIRPARK  
DRAWING NAME: COMPOSITE UTILITY PLAN - PHASE 1B-2  
PROJECT NO.: 102085-08  
REV: REV #7  
DRAWING NO.: 102085-U14