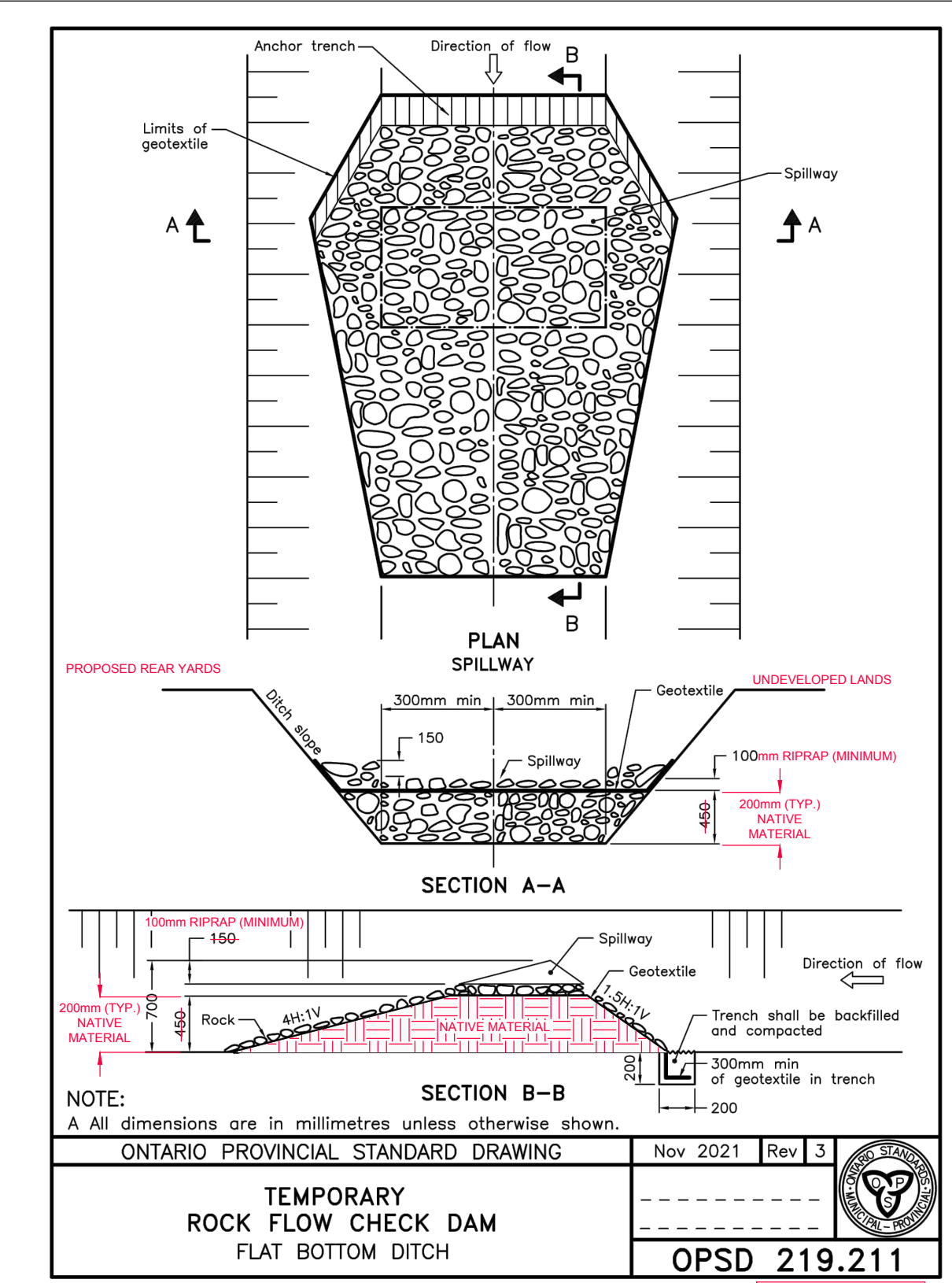
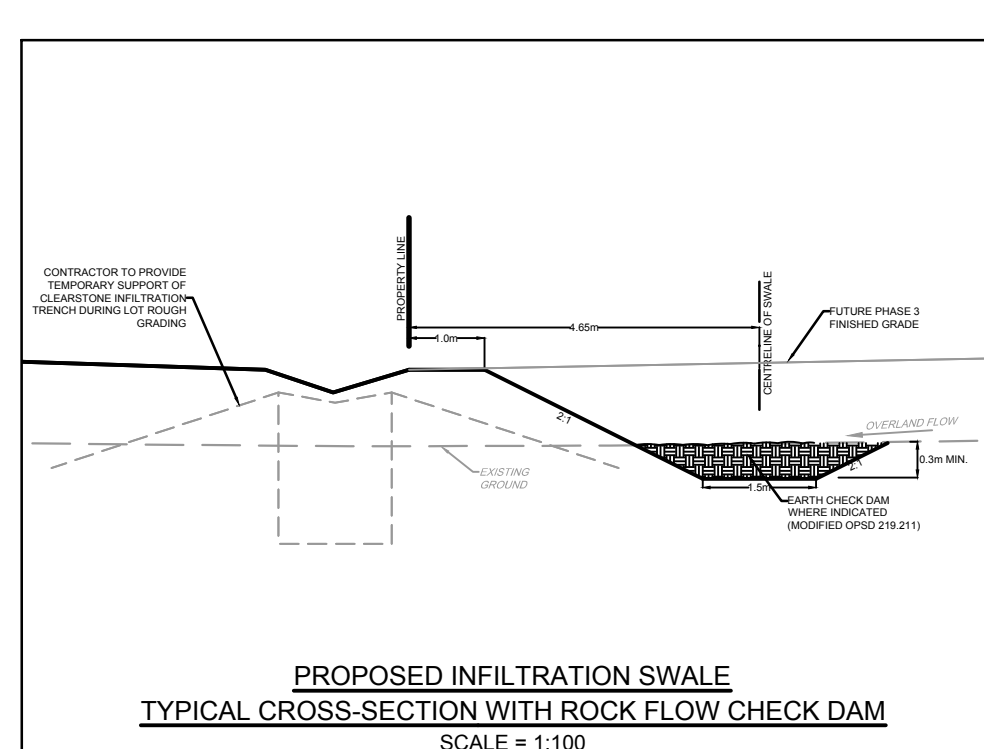
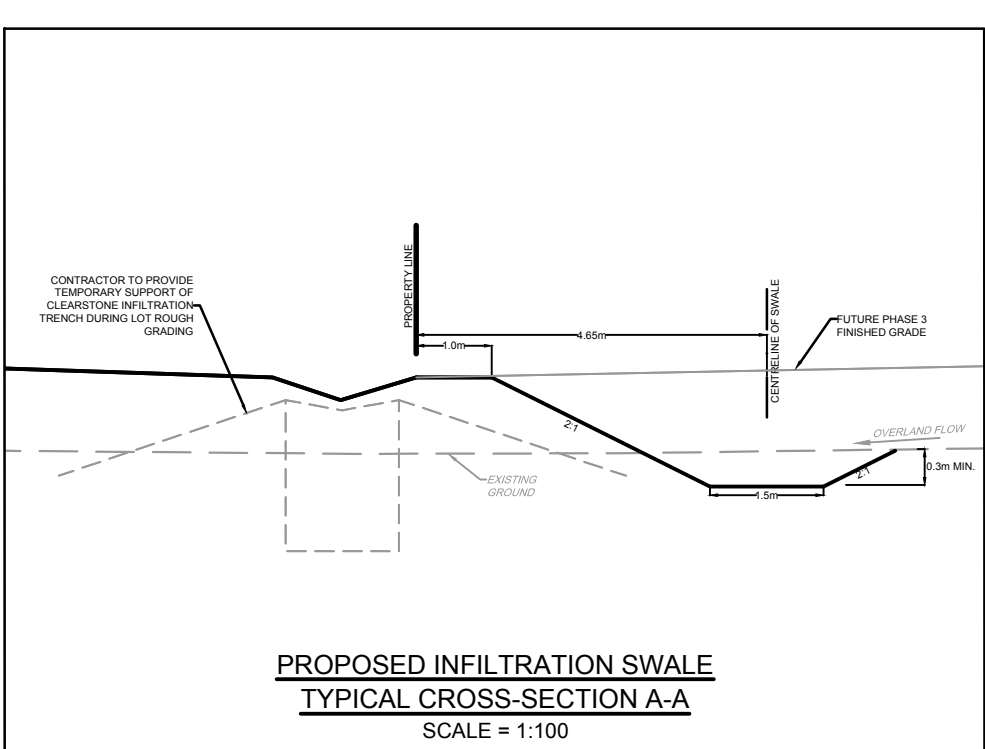
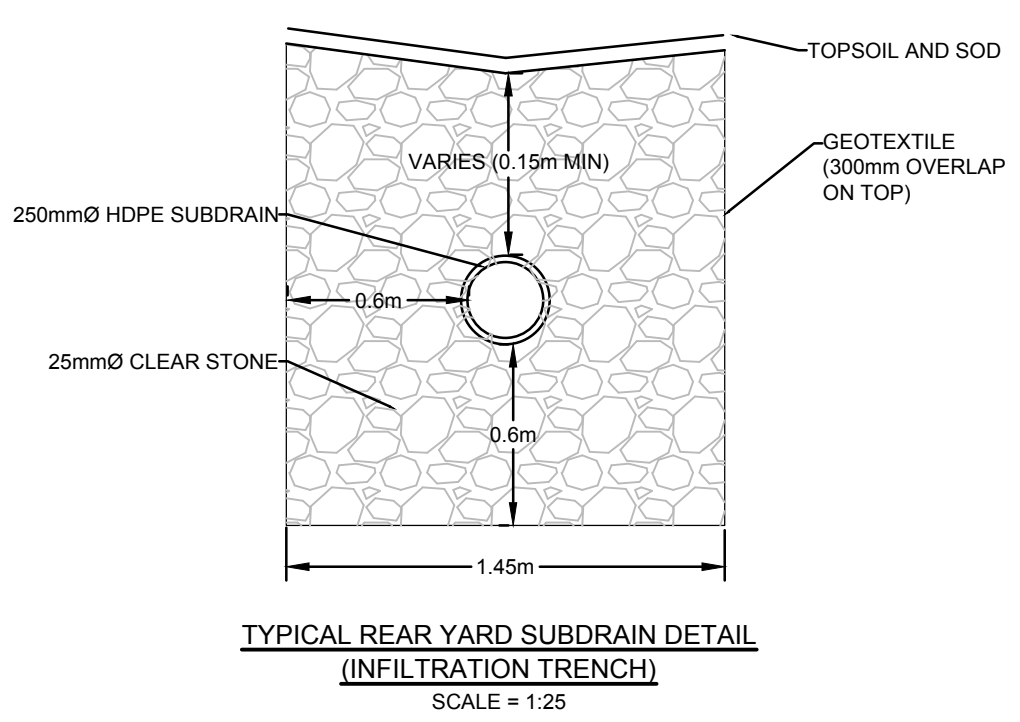


LEGEND

- PROPOSED REAR YARD INFILTRATION TRENCH
- PROPOSED CENTRELINE OF INFILTRATION SWALE
- PROPOSED TOP OF BERM
- CENTRELINE OF EXISTING INFILTRATION SWALE
- EXISTING TOP OF BERM
- PROPOSED SWALE ELEVATION
- EXISTING ELEVATION
- 0.6% PROPOSED GRADING DIRECTION AND SLOPE
- PROPOSED EARTH CHECK DAM (OPSD 219.211)
- EXISTING ROCK FLOW CHECK DAM TO BE REMOVED



NOTE:
A All dimensions are in millimetres unless otherwise shown.

ONTARIO PROVINCIAL STANDARD DRAWING Nov 2021 Rev 3

TEMPORARY ROCK FLOW CHECK DAM FLAT BOTTOM DITCH

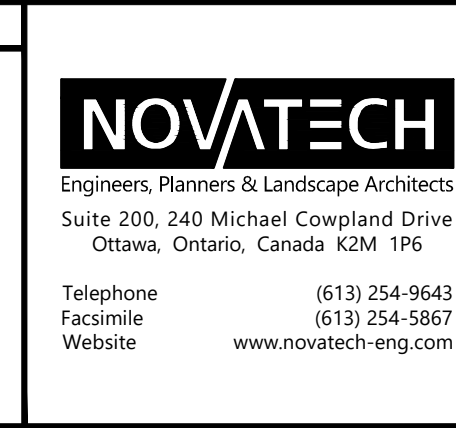
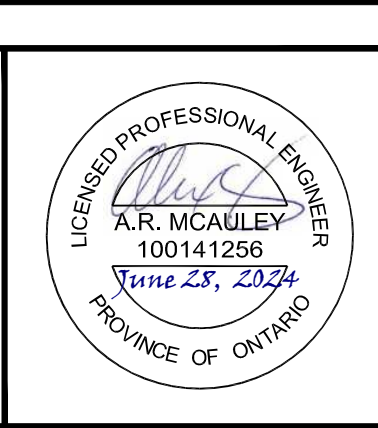
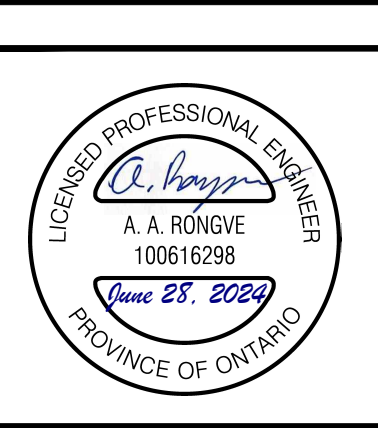
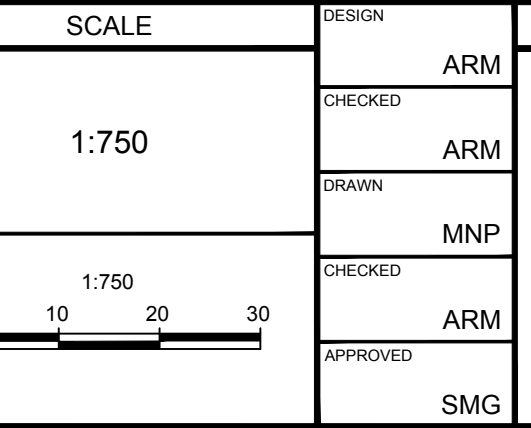
OPSD 219.211

- NOTES:**
- INFILTRATION TRENCHES SHOULD BE CONSTRUCTED AT THE END OF THE DEVELOPMENT CONSTRUCTION.
 - SMEARING OF THE NATIVE MATERIAL AT THE INTERFACE WITH THE INFILTRATION TRENCH FLOOR MUST BE AVOIDED AND/OR CORRECTED BY RAKING OR ROTOTILLING.
 - COMPACTION OF THE INFILTRATION TRENCH DURING CONSTRUCTION MUST BE MINIMIZED.
 - DURING CONSTRUCTION, EROSION AND SEDIMENT CONTROL MEASURES ARE REQUIRED TO PROTECT THE INLETS. THIS INCLUDES, BUT IS NOT LIMITED TO, FILTER BAGS PLACED UNDER THE LID OF EACH MANHOLE AND ROADWAY AND REAR YARD CATCHBASIN. FILTER BAGS MUST ALWAYS BE IN PLACE AND REGULARLY INSPECTED UNTIL SOO OR VEGETATION HAS FULLY ESTABLISHED. ROUTINE MAINTENANCE DURING CONSTRUCTION MAY ALSO BE REQUIRED TO PROTECT THE SUBDRAINS FROM CLOGGING.
 - OCCASIONAL POST CONSTRUCTION MAINTENANCE WILL BE REQUIRED TO REMOVE ACCUMULATED SEDIMENTS FROM THE INFILTRATION AND EXFILTRATION TRENCHES TO PREVENT CLOGGING. THIS MAY INCLUDE CATCH BASIN CLEANOUT AND SUBDRAIN PIPE FLUSHING.

NOTE:
THE POSITION OF ALL POLE LINES, CONDUITS, WATERMANS, SEWERS AND OTHER UNDERGROUND AND OVERGROUND UTILITIES AND STRUCTURES IS NOT NECESSARILY SHOWN ON THE CONTRACT DRAWINGS, AND WHERE SHOWN, THE ACCURACY OF THE POSITION OF SUCH UTILITIES AND STRUCTURES IS NOT GUARANTEED. BEFORE STARTING WORK, DETERMINE THE EXACT LOCATION OF ALL SUCH UTILITIES AND STRUCTURES AND ASSUME ALL LIABILITY FOR DAMAGE TO THEM.



No.	REVISION	DATE	BY
7.	ISSUED FOR REGISTRATION AND ECA	JUN 28/24	ARM
6.	REVISED POND INLET SWALE	MAY 14/24	ARM
5.	REVISED PER CITY COMMENTS	FEB 20/24	ARM
4.	ISSUED WITH ADDENDUM #2	JAN 5/24	ARM
3.	ISSUED FOR TENDER	DEC 7/23	ARM
2.	ISSUED FOR REVIEW	JUL 28/23	ARM
1.	ISSUED FOR COORDINATION	JAN 19/23	ARM



CITY OF OTTAWA
WEST CAPITAL AIRPARK

PHASE 1B-2 RESIDENTIAL INFILTRATION MEASURES PLAN

PROJECT NO: 102085-08
REV: REV # 7
DRAWING NO: 102085-INF2