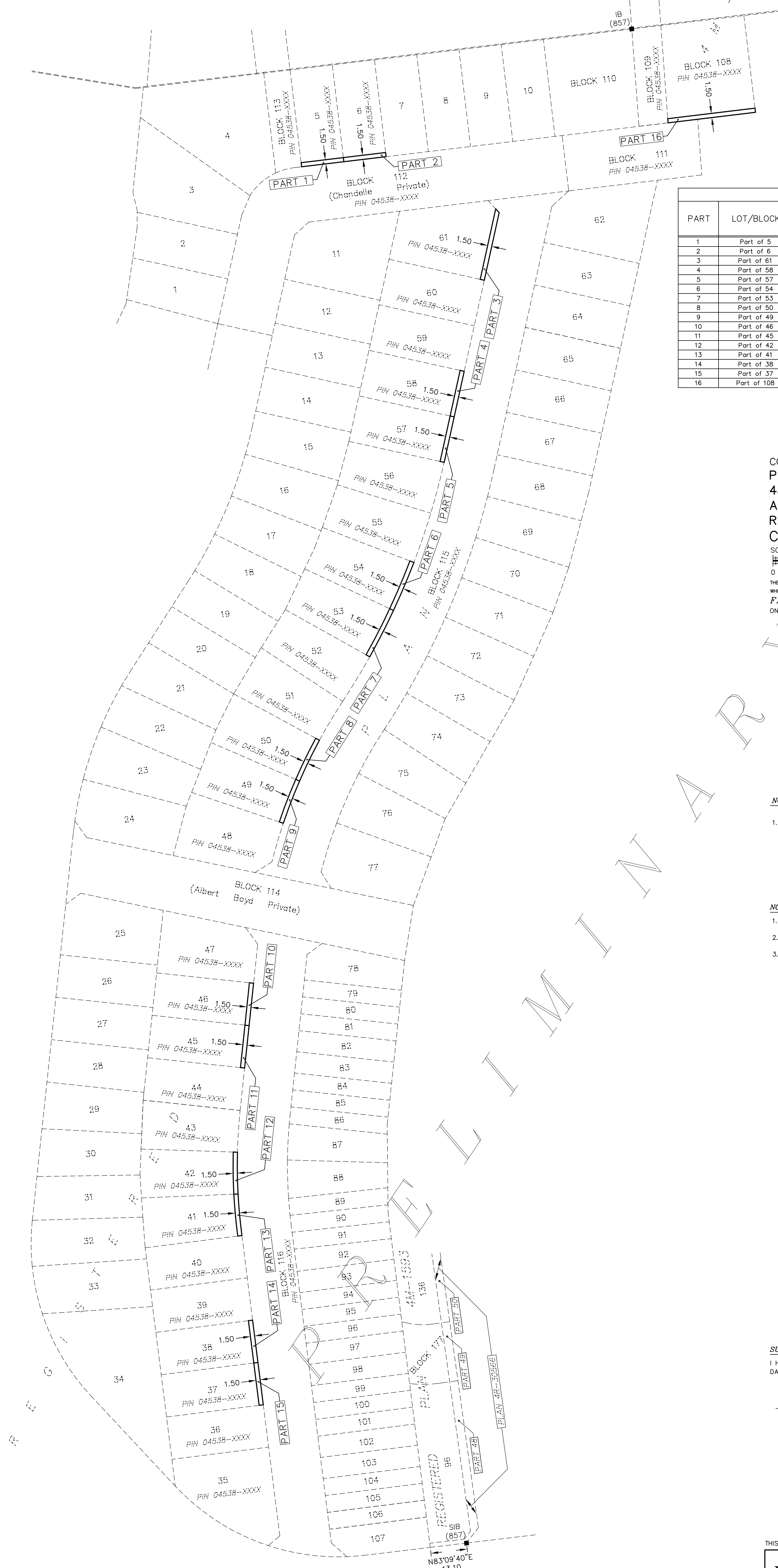


METRIC
DISTANCES AND COORDINATES SHOWN ON THIS PLAN ARE IN METRES
AND CAN BE CONVERTED TO FEET BY DIVIDING BY 0.3048



SCHEDULE (COMPILED PARTS)

PART	LOT/BLOCK	PLAN	PIN	AREA	NAME OF MOST RECENT TRANSFEREE
1	Part of 5	REGISTERED PLAN 4M-XXXX	04538-XXXX	XXX	
2	Part of 6		04538-XXXX	XXX	
3	Part of 61		04538-XXXX	XXX	
4	Part of 58		04538-XXXX	XXX	
5	Part of 57		04538-XXXX	XXX	
6	Part of 54		04538-XXXX	XXX	
7	Part of 53		04538-XXXX	XXX	
8	Part of 50		04538-XXXX	XXX	
9	Part of 49		04538-XXXX	XXX	
10	Part of 46		04538-XXXX	XXX	
11	Part of 45		04538-XXXX	XXX	
12	Part of 42		04538-XXXX	XXX	
13	Part of 41		04538-XXXX	XXX	
14	Part of 38		04538-XXXX	XXX	
15	Part of 37		04538-XXXX	XXX	
16	Part of 108		04538-XXXX	XXX	

COMPILED EASEMENT PLAN OF
PART OF LOTS 5, 6, 37, 38, 41, 42,
45, 46, 49, 50, 53, 54, 57, 58, 61
AND PART OF BLOCK 108
REGISTERED PLAN 4M-XXXX
CITY OF OTTAWA

SCALE 1 : 750
0 10 20 50 75 metres
THE INTENDED PLOT SIZE OF THIS PLAN IS 860mm IN WIDTH BY 560mm IN HEIGHT
WHEN PLOTTED AT A SCALE OF 1:750.
FAIRHALL, MOFFATT & WOODLAND LIMITED
ONTARIO LAND SURVEYORS

NOTE

- DISTANCES ARE GROUND AND CAN BE CONVERTED TO GRID BY MULTIPLYING BY THE COMBINED SCALE FACTOR 0.999905.

NOTES (WITH RESPECT TO PARTS 1-16 (INCLUSIVE))

- ALL PARTS LIE WHOLLY WITHIN THE LIMITS OF LOTS OR BLOCKS.
- ALL PARTS HAVE PERPENDICULAR WIDTHS AS SHOWN HEREON.
- ALL PREVIOUSLY UNDEFINED LIMITS ARE PARALLEL TO EXISTING LIMITS AND/OR PRODUCTIONS THEREOF.

COORDINATES WERE DERIVED FROM REGISTERED PLAN 4M-1593
MTM ZONE 9, NAD83 ORIGINAL.

COORDINATES HAVE BEEN DETERMINED TO AN URBAN ACCURACY
IN ACCORDANCE WITH SECTION 14(2) OF O.REG 216/10.

POINT ID	NORTHING	EASTING
*	*	*
*	*	*
*	*	*
*	*	*
*	*	*

COORDINATES CANNOT IN THEMSELVES BE USED TO RE-ESTABLISH
CORNERS OR BOUNDARIES SHOWN ON THIS PLAN.

SURVEYOR'S CERTIFICATE (WITH RESPECT TO PARTS 1-16 (INCLUSIVE))

I HEREBY CERTIFY THAT THIS PLAN IS AN ACCURATE COMPILATION BASED ON
DATA DERIVED FROM REGISTERED PLAN 4M-XXXX.

DATE _____ JOHN H. GUTRI
ONTARIO LAND SURVEYOR

THIS PLAN OF SURVEY RELATES TO AOLS PLAN SUBMISSION FORM NUMBER

Fairhall Moffatt & Woodland L I M I T E D ONTARIO LAND SURVEYORS Surveying and Land Information Services 100-600 TERRY FOX DRIVE, KANATA, ONTARIO K2L 4B6 TEL: (613) 591-2580 FAX: (613) 591-1495 www.fmw.on.ca	JOB No. AB25901
	E, N
	REFERENCE No. ***-4M-XXXX
	S:\085\AB259000\AB25901 100\09\PLAN fp_ob25901.dwg (fr)