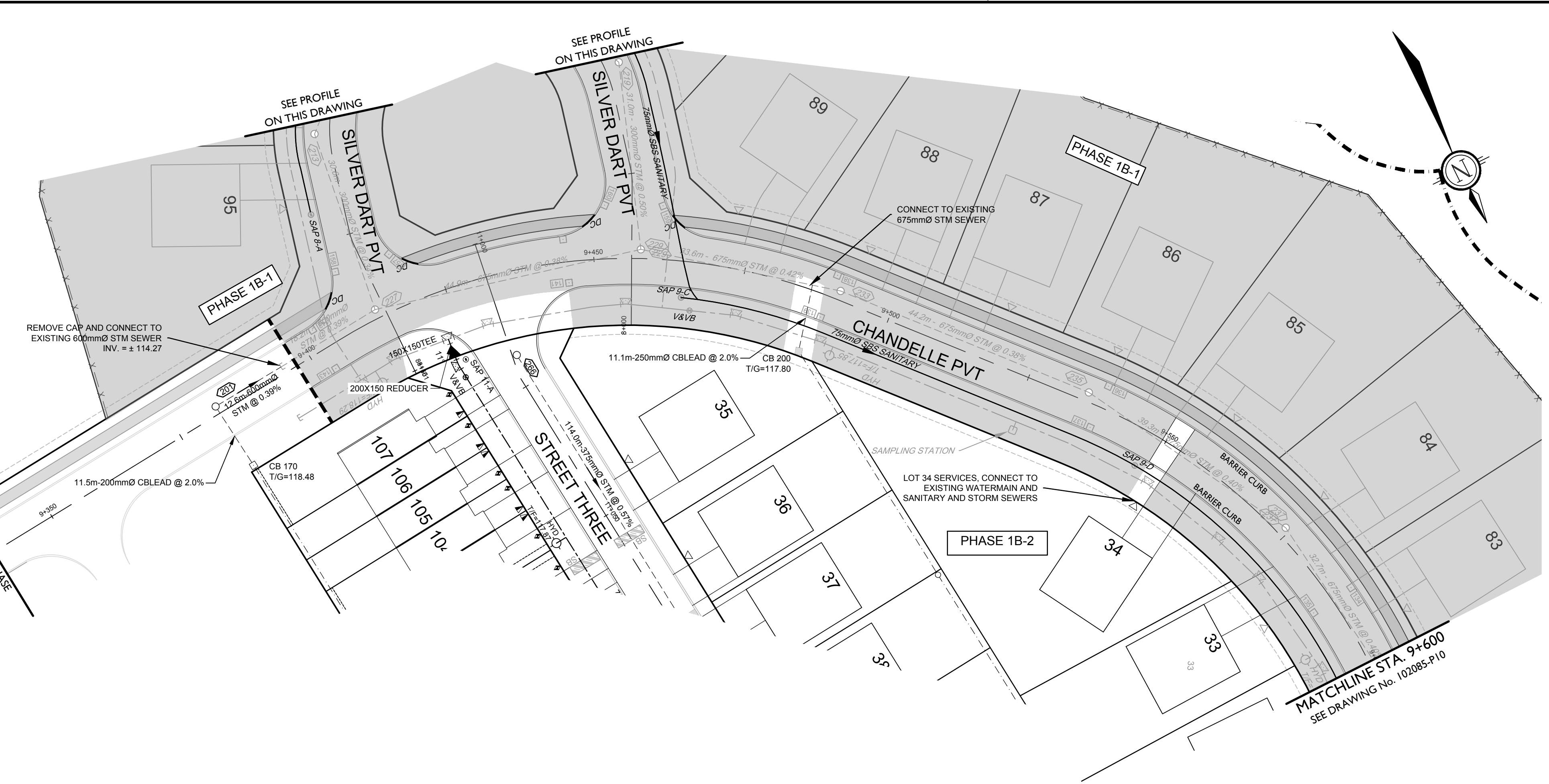
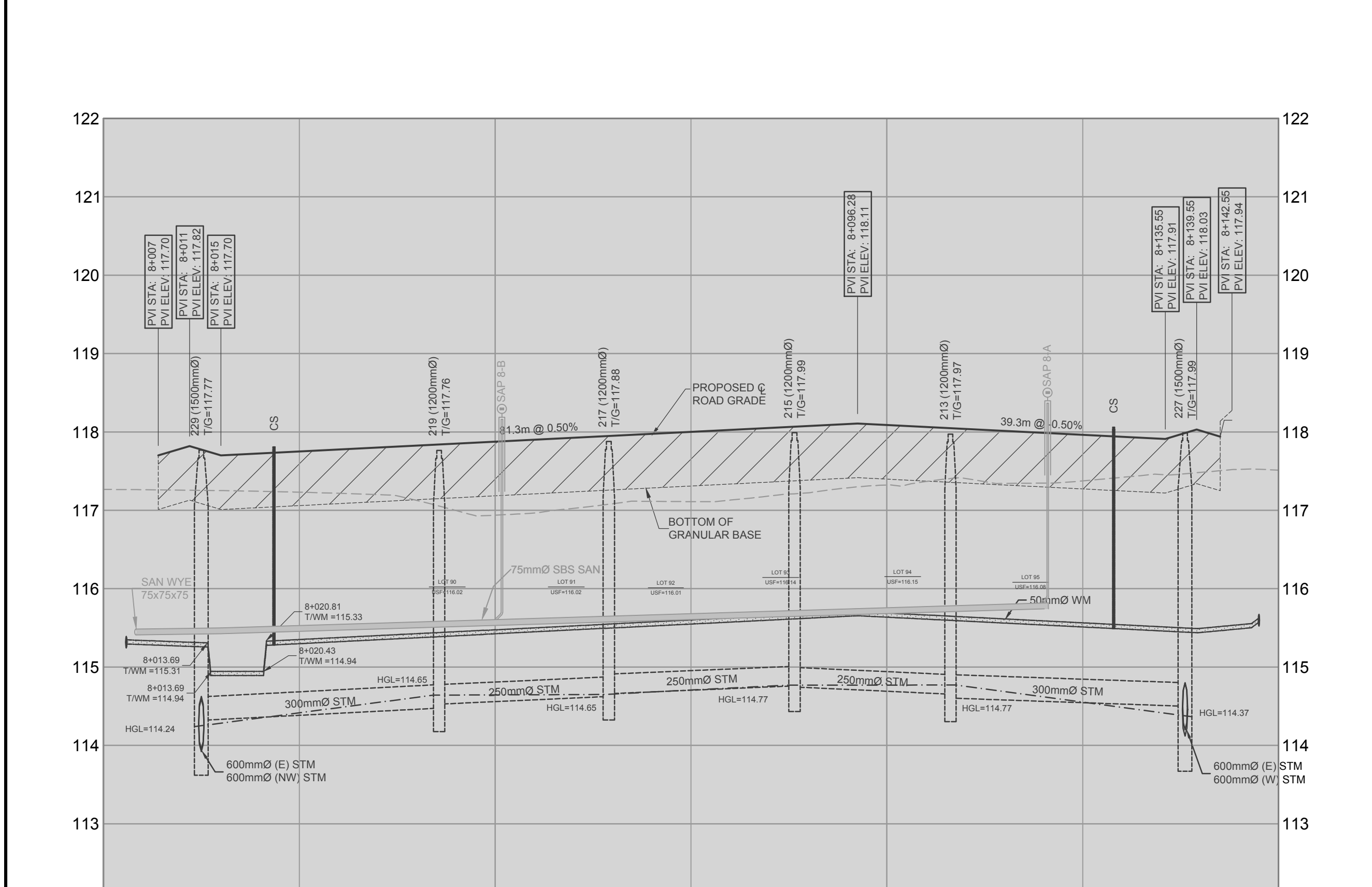


SILVER DART PVT

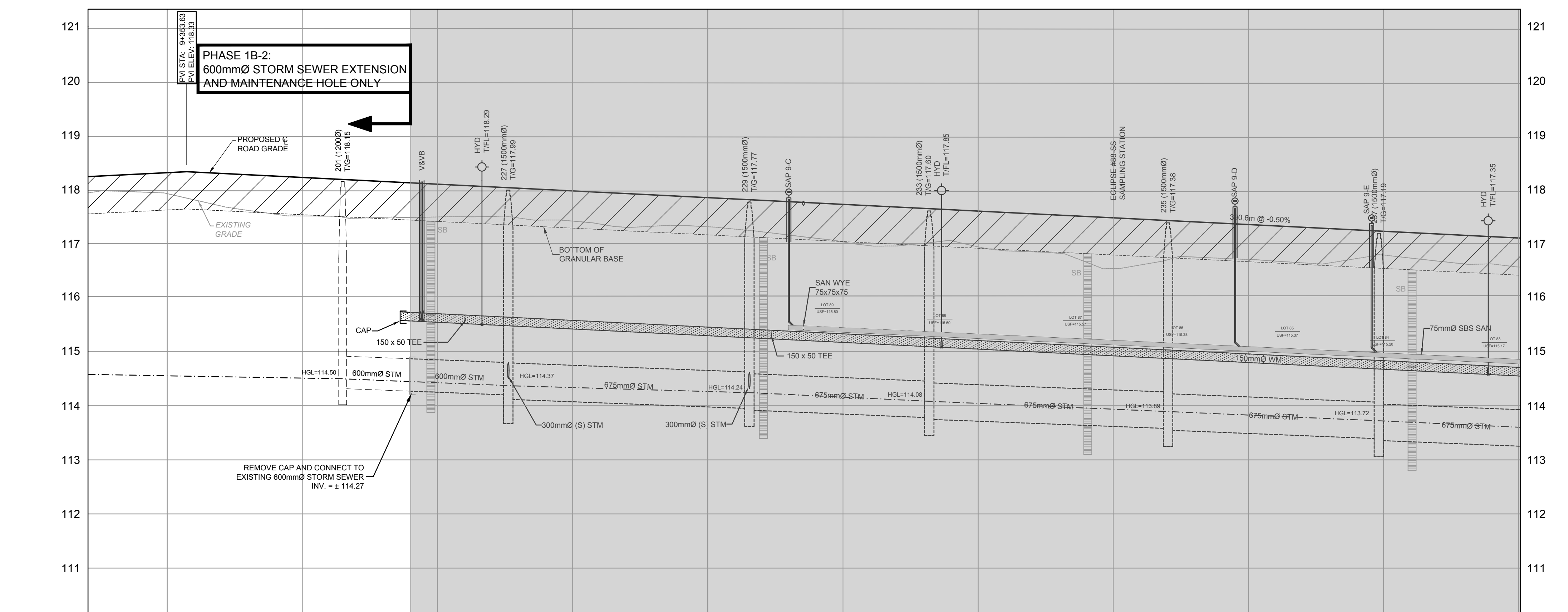
- LEGEND**
- PROPOSED VALVE LOCATION
 - V&VB VALVE & VALVE BOX
 - V&VC VALVE & VALVE CHAMBER
 - REDUCER
 - ◇ HYD PROPOSED HYDRANT LOCATION COMPLETE WITH VALVES
 - PROPOSED WATER SAMPLING STATION (ECLIPSE #68-22 OR APPROVED EQUIVALENT) COMPLETE WITH VALVES
 - PROPOSED BEND AND THRUSTBLOCK (SEE PLAN AND PROFILES)
 - PROPOSED BEND AND THRUSTBLOCK (SEE PLAN AND PROFILES)
 - SAP 2-D PROPOSED SANITARY SYSTEM ACCESS POINT
 - SBS SANITARY PROPOSED SMALL BORE SEWER-SANITARY
 - PROPOSED STORM MH & SEWER
 - CB 2 PROPOSED ROAD CATCHBASIN
 - RYCB I2 PROPOSED REAR YARD CATCHBASIN
 - CBMH I0 PROPOSED CATCHBASIN MANHOLE
 - PROPOSED SERVICE LOCATION FOR HANGAR LOTS
 - PROPOSED SERVICE LOCATION FOR ALL OTHER LOTS
 - PROPOSED DIRECTION OF FLOW
 - 1.8m CONCRETE SIDEWALK
 - PROPOSED DITCH
 - SEEPAGE BARRIER AS PER CITY OF OTTAWA DETAIL S8
 - STONEDUST PATH
 - ST PROPOSED DITCH COMPLETE WITH CLEAR STONE TRENCH
 - S PROPOSED DITCH COMPLETE WITH SUBDRAIN



CHANDELLE PVT

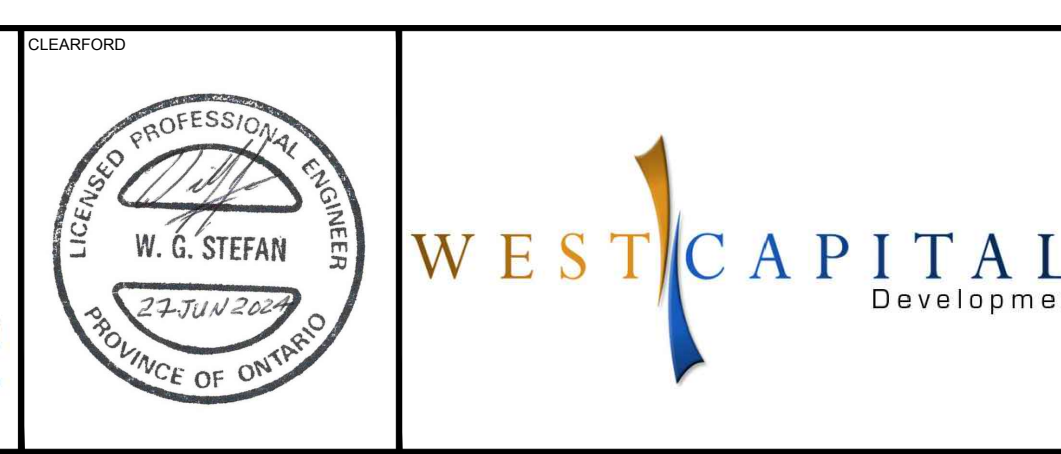


PROPOSED ELEVATION	TOP OF WATERMAIN ELEVATION	STORM SEWER INVERTS	SANITARY SEWER INVERTS	EXISTING ELEVATION	CHAINAGE
117.70	115.36	115.36	115.36	117.27	8+000
117.82	115.34	115.34	115.34	117.27	8+025
117.70	115.35	115.35	115.35	117.23	8+025
117.75	115.35	115.35	115.35	117.64	8+025
117.87	115.47	115.47	115.47	117.64	8+050
118.00	115.60	115.60	115.60	117.71	8+075
118.11	115.71	115.71	115.71	117.71	8+082
118.89	115.69	115.69	115.69	117.32	8+100
117.86	115.56	115.56	115.56	117.28	8+125
117.91	115.54	115.54	115.54	117.28	8+125
117.91	115.51	115.51	115.51	117.28	8+131
118.03	115.49	115.49	115.49	117.28	8+131
117.84	115.67	115.67	115.67	117.28	8+131
117.94	115.67	115.67	115.67	117.28	8+150
117.94	115.67	115.67	115.67	117.28	8+150

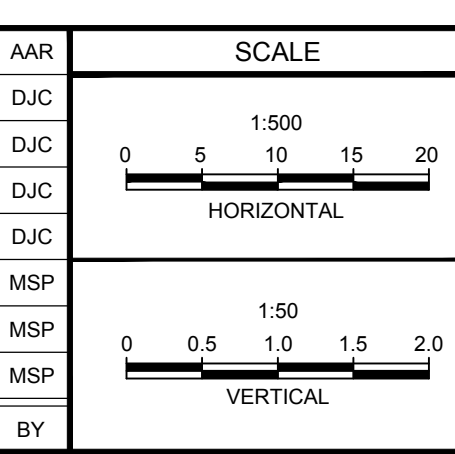


PROPOSED ELEVATION	TOP OF WATERMAIN ELEVATION	STORM SEWER INVERTS	SANITARY SEWER INVERTS	EXISTING ELEVATION	CHAINAGE
118.82	115.85	115.85	115.85	115.85	9+344.88
118.31	115.53	115.53	115.53	115.53	9+344.88
118.31	114.76	114.76	114.76	115.53	9+347.22
118.33	115.80	115.80	115.80	115.53	9+350
118.22	115.85	115.85	115.85	115.53	9+359.78
118.10	115.73	115.73	115.73	115.53	9+375
117.98	115.57	115.57	115.57	115.53	1+401.01
117.86	115.57	115.57	115.57	115.53	9+383.10
117.86	115.55	115.55	115.55	115.53	9+387.10
117.86	115.55	115.55	115.55	115.53	9+400
117.86	115.57	115.57	115.57	115.53	9+408.44
117.86	115.57	115.57	115.57	115.53	9+413.1
117.86	115.57	115.57	115.57	115.53	9+425
117.86	115.57	115.57	115.57	115.53	9+450
117.86	115.57	115.57	115.57	115.53	9+467.7
117.86	115.57	115.57	115.57	115.53	9+475
117.86	115.57	115.57	115.57	115.53	9+481
117.86	115.57	115.57	115.57	115.53	9+483.26
117.86	115.57	115.57	115.57	115.53	9+500
117.86	115.57	115.57	115.57	115.53	9+504.37
117.86	115.57	115.57	115.57	115.53	9+525
117.86	115.57	115.57	115.57	115.53	9+535.1
117.86	115.57	115.57	115.57	115.53	9+550
117.86	115.57	115.57	115.57	115.53	9+564.37
117.86	115.57	115.57	115.57	115.53	9+575
117.86	115.57	115.57	115.57	115.53	9+594.37
117.86	115.57	115.57	115.57	115.53	9+600

NOTE:
THE POSITION OF ALL POLE LINES, CONDUITS, WATERMANS, SEWERS AND OTHER UNDERGROUND AND OVERGROUND UTILITIES AND STRUCTURES IS NOT NECESSARILY SHOWN ON THE CONTRACT DRAWINGS, AND WHERE SHOWN, THE ACCURACY OF THE POSITION OF SUCH UTILITIES AND STRUCTURES IS NOT GUARANTEED. BEFORE STARTING WORK, DETERMINE THE EXACT LOCATION OF ALL SUCH UTILITIES AND STRUCTURES AND ASSUME ALL LIABILITY FOR DAMAGE TO THEM.



No.	REVISION	DATE	BY	No.	REVISION	DATE	BY
19	ISSUED FOR REGISTRATION AND ECA	JUN 19/24	ARM	11	ISSUED FOR TENDER (PH1B CREEK SIDE STM SEWERS)	FEB 23/21	AAR
18	REVISED PER CITY COMMENTS (NO CHANGES)	FEB 20/24	ARM	10	REVISED AS PER CLEARFORD COMMENTS	APR 11/15	DJC
17	ISSUED WITH ADDENDUM #2 (NO CHANGES)	JAN 5/24	ARM	9	ISSUED FOR TENDER	FEB 26/14	DJC
16	ISSUED FOR TENDER - PHASE 1B-2 (NO CHANGES)	DEC 7/23	ARM	8	ISSUED FOR PHASE 1 RESIDENTIAL REGISTRATION	OCT 15/14	DJC
15	ISSUED FOR REVIEW - PHASE 1B-2	JUL 28/23	ARM	7	REVISED PER CITY / MVC COMMENTS	SEPT 26/13	DJC
14	REVISED PER CITY & CLEARFORD COMMENTS	SEPT 23/21	ARM	6	REVISED PER CITY / MVC COMMENTS	MAY 28/13	MSP
13	REVISED PER PHASE 1B LIMITS	JUL 12/21	ARM	5	REVISED FOR ISSUE TO MOE	MAR 09/12	MSP
12	IFC (PH1B CREEK SIDE STM SEWER MAINS)	MAR 22/21	AAR	4	REVISED PER CITY COMMENTS / ISSUED TO MOE	MAR 06/12	MSP



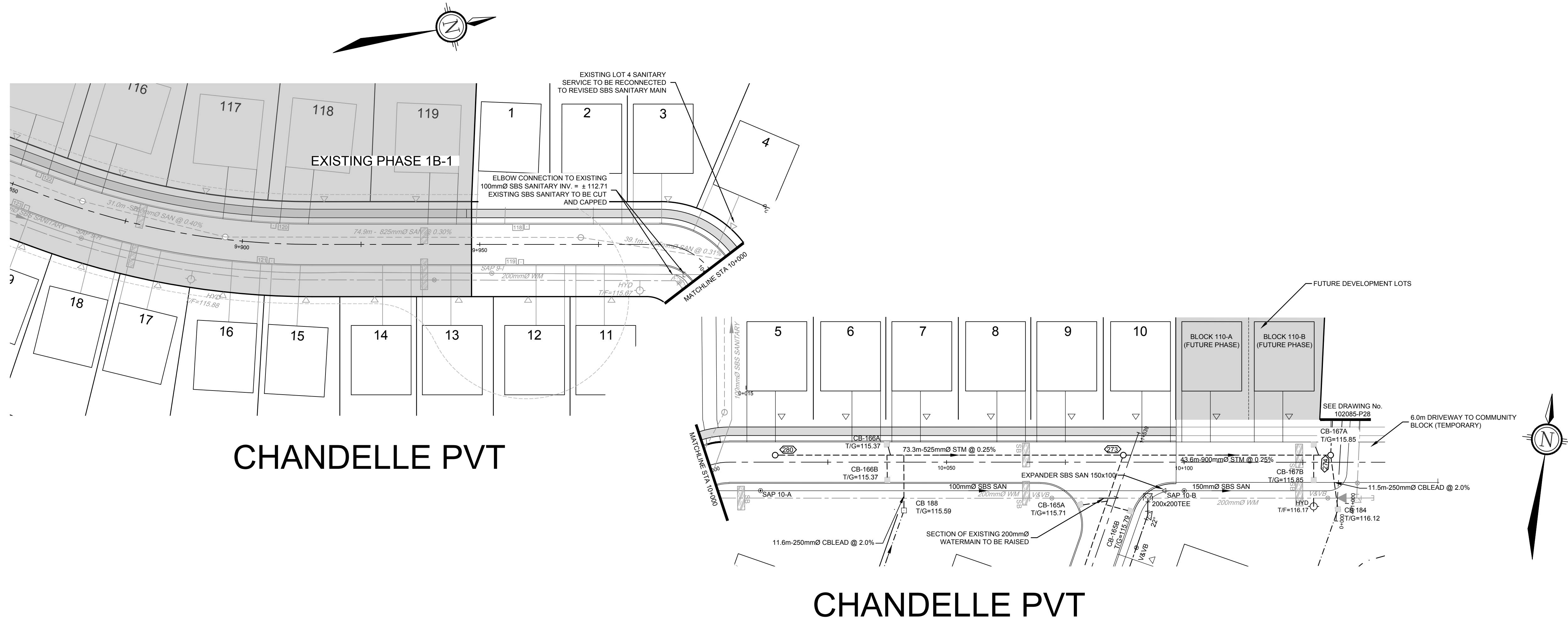
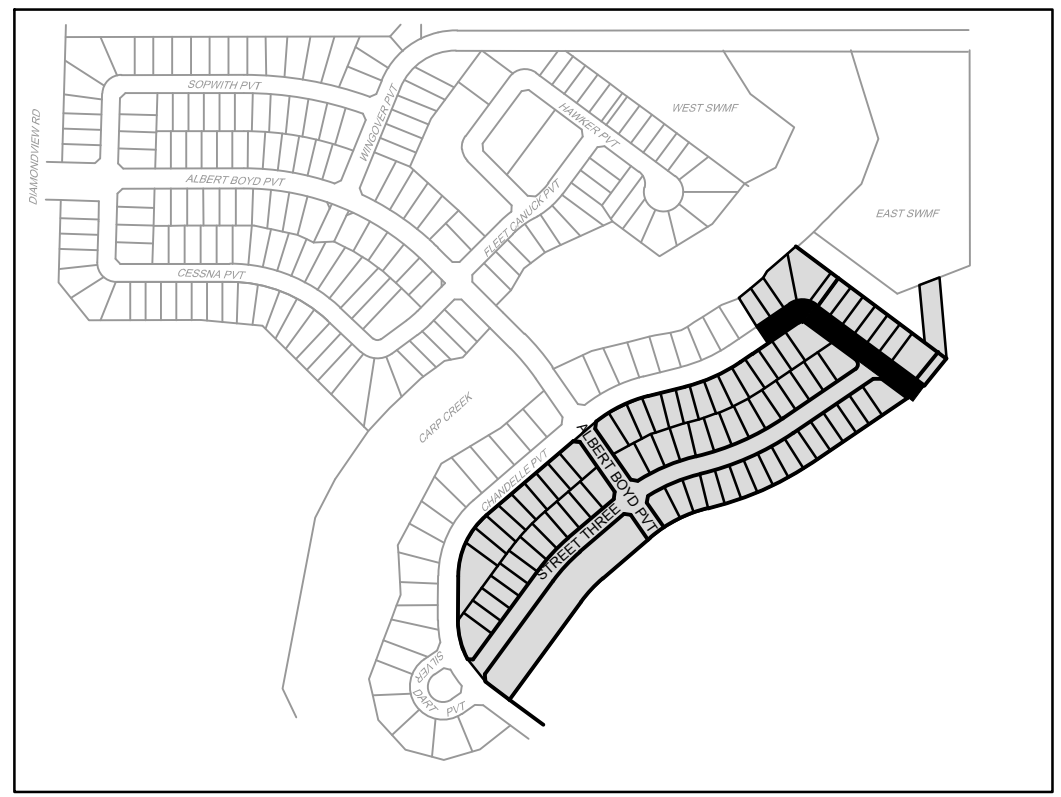
DESIGN	CHECKED	DRAWN	APPROVED
CAH/MSP	MSP/SMG	CAH	MSP
JGR			

NOVATECH
Engineers, Planners & Landscape Architects
Suite 200, 240 Michael Cowpland Drive
Ottawa, Ontario, Canada K2M 1P6
Telephone: (613) 254-9643
Facsimile: (613) 254-5867
Website: www.novatech-eng.com

CITY OF OTTAWA
WEST CAPITAL AIRPARK

PLAN & PROFILE
SILVER DART PRIVATE
STA. 8+000 TO 8+150
CHANDELLE PRIVATE
STA. 9+335 TO 9+600

PROJECT No.: 102085-08
REV #19
DRAWING No.: 102085-P9

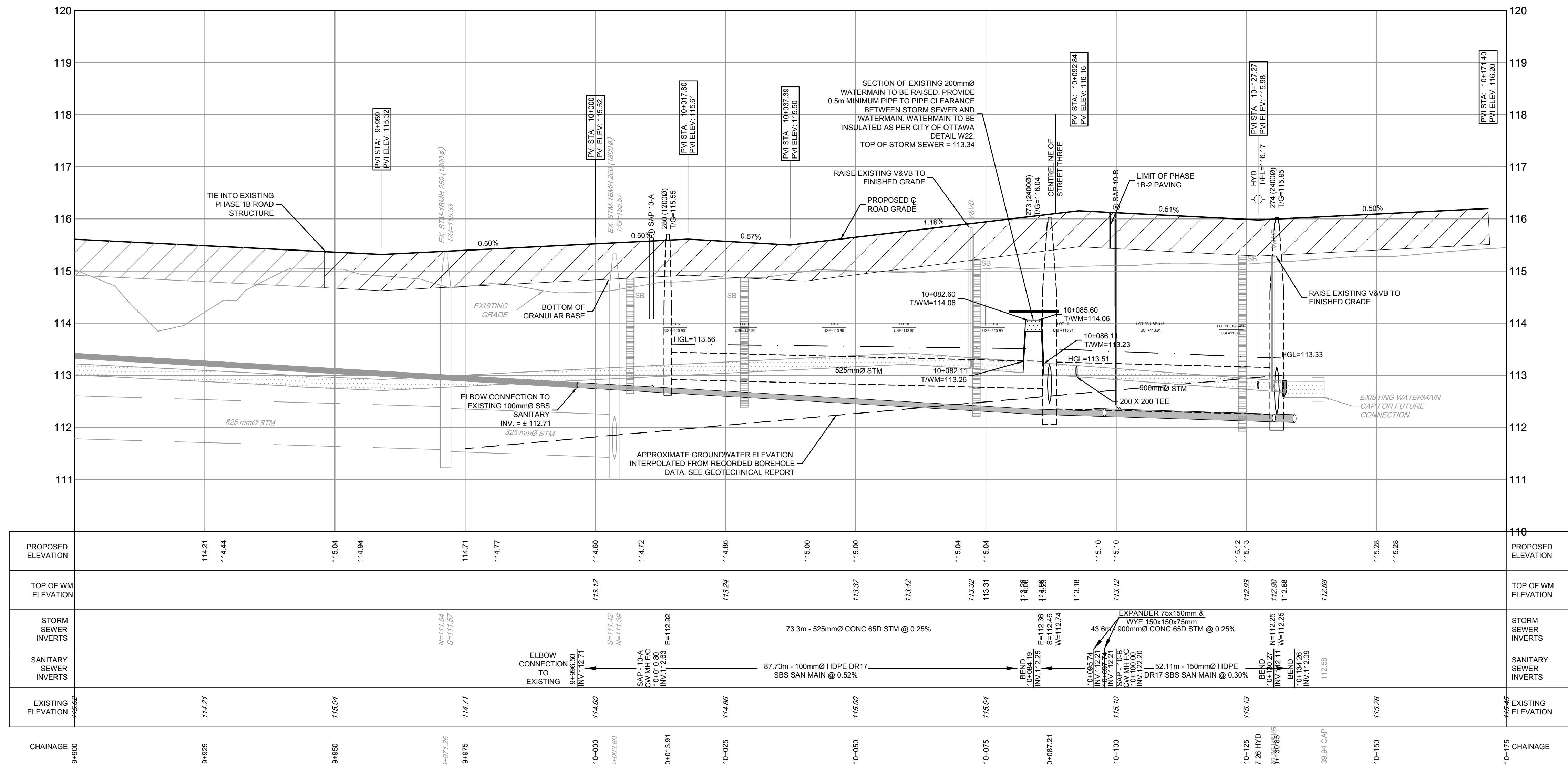


LEGEND

200mm WM	PROPOSED WATERMAIN AND DIAMETER
V&VB	PROPOSED VALVE & VALVE BOX
HYD	PROPOSED HYDRANT CW VALVE & LEAD
T/F = 08.45	PROPOSED TOP OF BOTTOM FLANGE
200mm WM	EXISTING WATERMAIN AND DIAMETER
V&VB	EXISTING VALVE & VALVE BOX
HYD	EXISTING HYDRANT CW VALVE & LEAD
SBS SANITARY	PROPOSED SMALL BORE SEWER, SANITARY AND DIRECTION OF FLOW
SAP 1-A	PROPOSED SANITARY SYSTEM ACCESS POINT
SBS SANITARY	EXISTING SMALL BORE SEWER, SANITARY AND DIRECTION OF FLOW
SAP 1-A	EXISTING SANITARY SYSTEM ACCESS POINT
SSW	PROPOSED STORM SEWER AND DIRECTION OF FLOW
SSW	PROPOSED REAR YARD SUBDRAIN, INFILTRATION TRENCH AND DIRECTION OF FLOW
SSW	EXISTING STORM SEWER
SMH	PROPOSED STORM MANHOLE
SMH	EXISTING STORM MANHOLE
SL	PROPOSED SERVICE LOCATION
SL	SERVICE LOCATION - SERVICE INSTALLED AS PART OF PHASE 1B-1 WORKS
SL	PROPOSED SERVICE LOCATION (WATER AND STORM)
SL	PROPOSED SERVICE LOCATION (SANITARY ONLY)
CS	1.8m CONCRETE SIDEWALK
CB	PROPOSED CATCHBASIN
CB	PROPOSED CATCHBASIN WITH INLET CONTROL DEVICE
CB	EXISTING ROADSIDE CATCHBASIN
CB ELB	PROPOSED LANDSCAPE CATCHBASIN ELBOW
CB TEE	PROPOSED LANDSCAPE CATCHBASIN TEE
SB	PROPOSED SEEPAGE BARRIER

CHANDELLE PVT

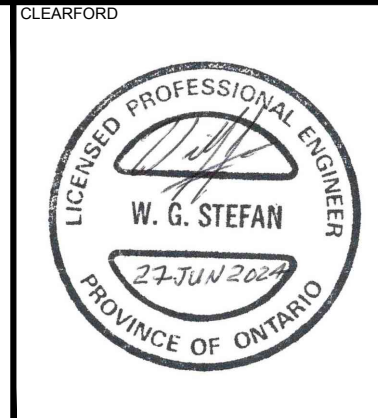
CHANDELLE PVT



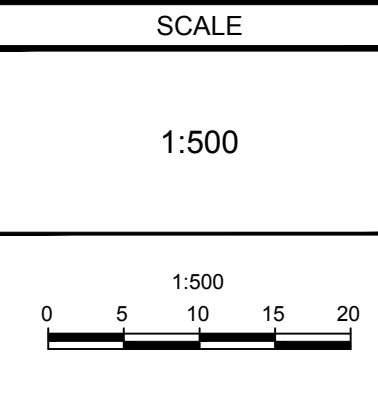
REFER TO 102085-ND1B2 FOR ADDITIONAL NOTES

102085-ND1B2-PLAN - PHASE 1B-1 - 2024-06-18 10:07am

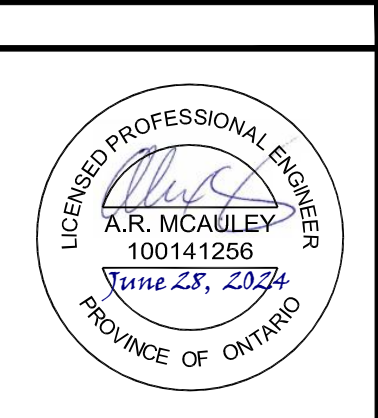
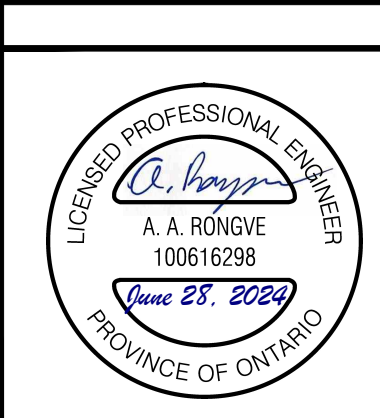
NOTE:
THE POSITION OF ALL POLE LINES, CONDUITS, WATERMANS, SEWERS AND OTHER UNDERGROUND AND OVERGROUND UTILITIES AND STRUCTURES IS NOT NECESSARILY SHOWN ON THE CONTRACT DRAWINGS, AND WHERE SHOWN, THE ACCURACY OF THE POSITION OF SUCH UTILITIES AND STRUCTURES IS NOT GUARANTEED. BEFORE STARTING WORK, DETERMINE THE EXACT LOCATION OF ALL SUCH UTILITIES AND STRUCTURES AND ASSUME ALL LIABILITY FOR DAMAGE TO THEM.



8.	ISSUED FOR REGISTRATION AND ECA	JUN 1924	ARM
7.	REVISED PER CITY COMMENTS	FEB 2024	ARM
6.	REVISED PER CITY COMMENTS	FEB 9/24	ARM
5.	ISSUED WITH ADDENDUM #2	JAN 5/24	ARM
4.	ISSUED FOR TENDER	DEC 7/23	ARM
3.	ISSUED FOR REVIEW	JUL 25/23	ARM
2.	ISSUED FOR COORDINATION	JUL 11/23	ARM
1.	ISSUED FOR COORDINATION	JAN 18/23	ARM
No.	REVISION	DATE	BY



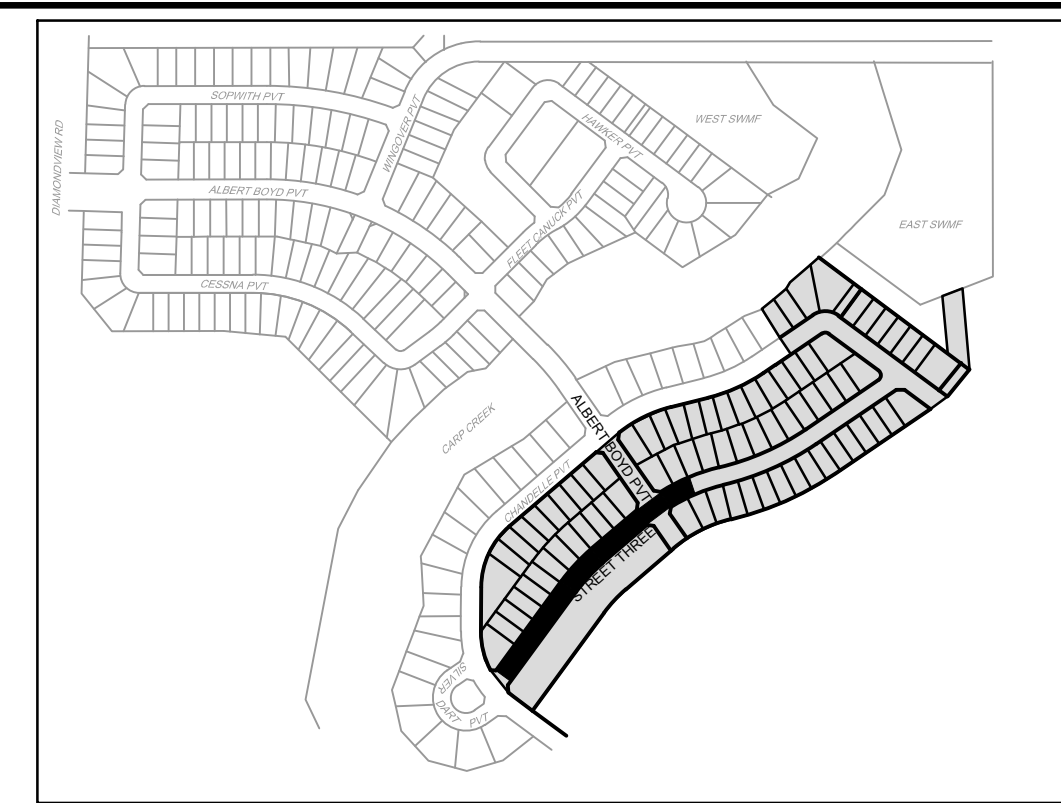
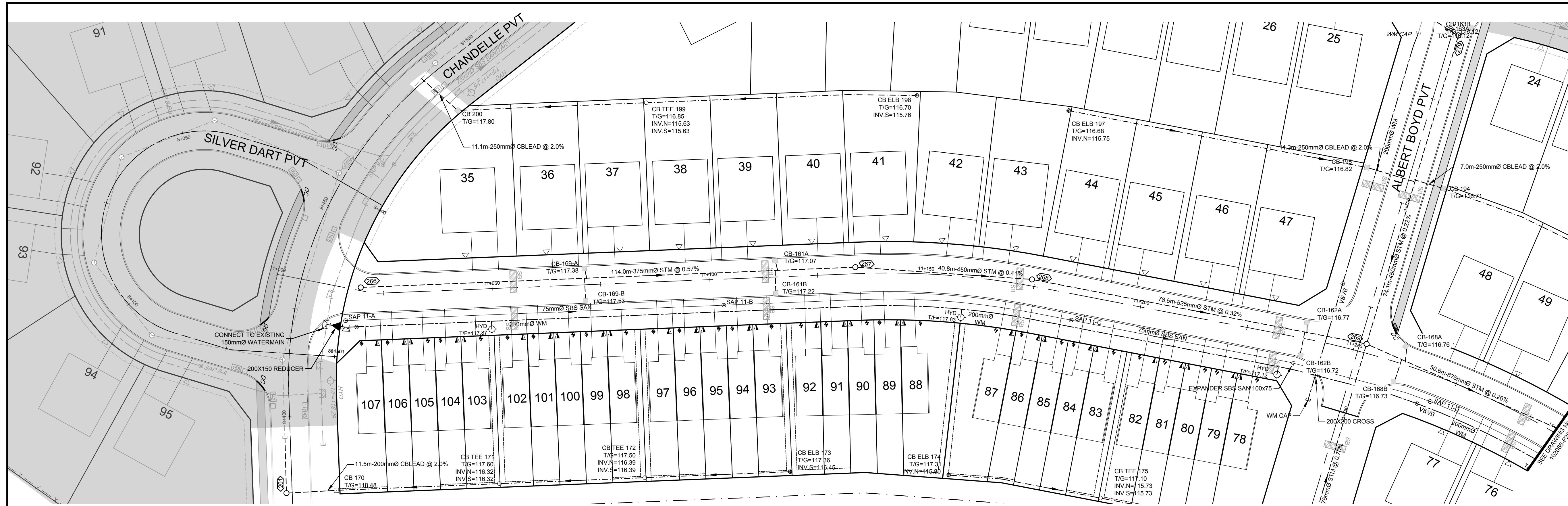
DESIGN	MNP
CHECKED	ARM
DRAWN	ARM
CHECKED	ARM
APPROVED	SMG



LOCATION
CITY OF OTTAWA
WEST CAPITAL AIRPARK

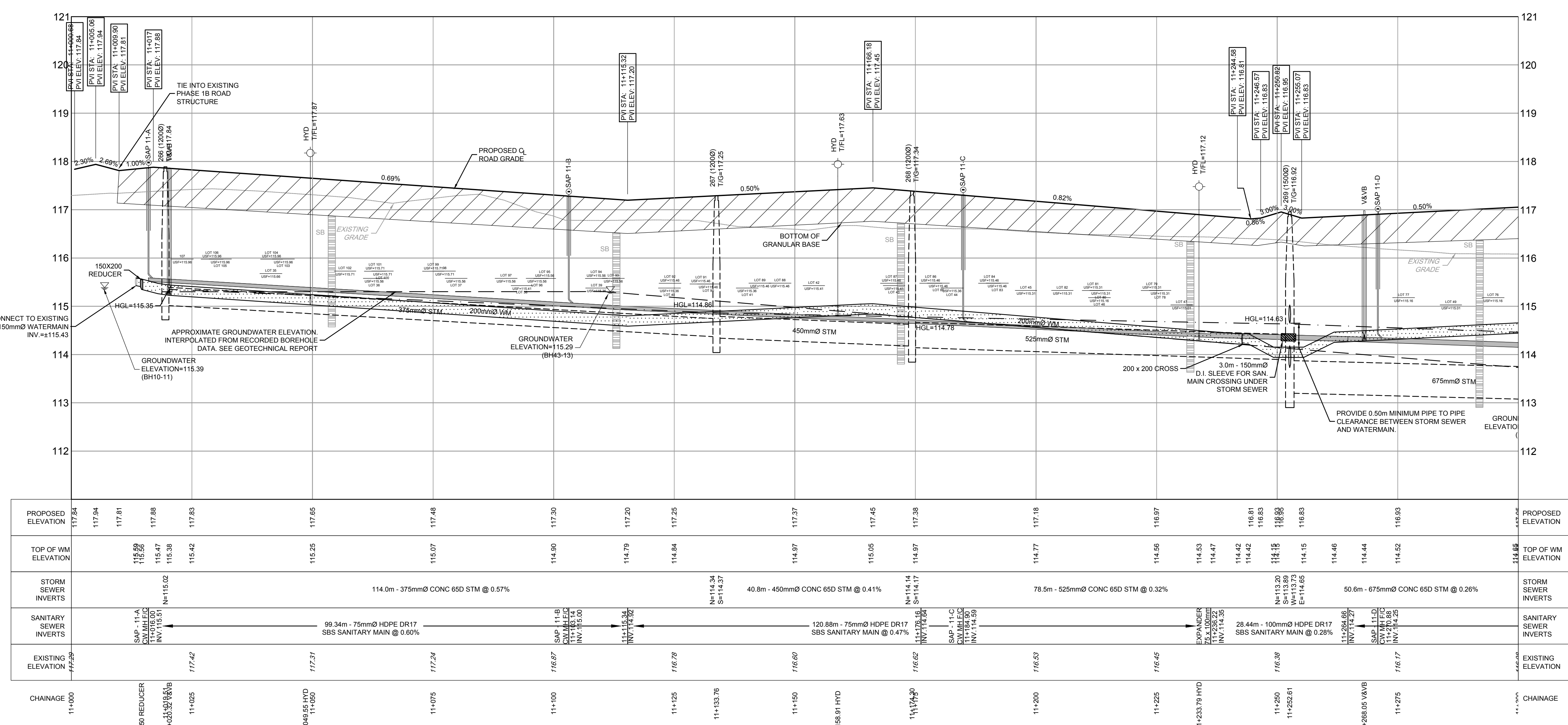
DRAWING NAME
PLAN & PROFILE - PHASE 1B-2
CHANDELLE PRIVATE
STA 9+900 TO STA 10+175

PROJECT No. 102085
REV # 8
DRAWING No. 102085-P24



- LEGEND**
- 200mm Ø WM PROPOSED WATERMAIN AND DIAMETER
 - Ø V&VB PROPOSED VALVE & VALVE BOX
 - ◇ HYD PROPOSED HYDRANT CW VALVE & LEAD
 - T/F = 08.45 PROPOSED TOP OF BOTTOM FLANGE
 - 200mm Ø WM EXISTING WATERMAIN AND DIAMETER
 - Ø V&VB EXISTING VALVE & VALVE BOX
 - ◇ HYD EXISTING HYDRANT CW VALVE & LEAD
 - SBS SANITARY PROPOSED SMALL BORE SEWER, SANITARY AND DIRECTION OF FLOW
 - ◊ SAP 1-A PROPOSED SANITARY SYSTEM ACCESS POINT
 - SBS SANITARY EXISTING SMALL BORE SEWER, SANITARY AND DIRECTION OF FLOW
 - ◊ SAP 1-A EXISTING SANITARY SYSTEM ACCESS POINT
 - PROPOSED STORM SEWER AND DIRECTION OF FLOW
 - PROPOSED REAR YARD SUBDRAIN, INFILTRATION TRENCH AND DIRECTION OF FLOW
 - EXISTING STORM SEWER
 - PROPOSED STORM MANHOLE
 - EXISTING STORM MANHOLE
 - ▽ PROPOSED SERVICE LOCATION
 - ▽ SERVICE LOCATION - SERVICE INSTALLED AS PART OF PHASE 1B-1 WORKS
 - ▽ PROPOSED SERVICE LOCATION (WATER AND STORM)
 - ▽ PROPOSED SERVICE LOCATION (SANITARY ONLY)
 - 1.8m CONCRETE SIDEWALK
 - CB □ PROPOSED CATCHBASIN
 - CB □ PROPOSED CATCHBASIN WITH INLET CONTROL DEVICE
 - EXISTING ROADSIDE CATCHBASIN
 - CB ELB PROPOSED LANDSCAPE CATCHBASIN ELBOW
 - CB TEE PROPOSED LANDSCAPE CATCHBASIN TEE
 - SB PROPOSED SEEPAGE BARRIER

STREET THREE



102085-ND1B2-Phase 1B-2-Plan P25, Jun. 18, 2024 - 10:07am
 102085-ND1B2-Phase 1B-2-Plan P25, Jun. 18, 2024 - 10:07am

REFER TO 102085-ND1B2 FOR ADDITIONAL NOTES

NOTE:
 THE POSITION OF ALL POLE LINES, CONDUITS, WATERMANS, SEWERS AND OTHER UNDERGROUND AND OVERGROUND UTILITIES AND STRUCTURES IS NOT NECESSARILY SHOWN ON THE CONTRACT DRAWINGS, AND WHERE SHOWN, THE ACCURACY OF THE POSITION OF SUCH UTILITIES AND STRUCTURES IS NOT GUARANTEED. BEFORE STARTING WORK, DETERMINE THE EXACT LOCATION OF ALL SUCH UTILITIES AND STRUCTURES AND ASSUME ALL LIABILITY FOR DAMAGE TO THEM.



NO.	REVISION	DATE	BY
8.	ISSUED FOR REGISTRATION AND ECA	JUN 19/24	ARM
7.	REVISED PER CITY COMMENTS	FEB 20/24	ARM
6.	REVISED PER CITY COMMENTS	FEB 9/24	ARM
5.	ISSUED WITH ADDENDUM #2	JAN 5/24	ARM
4.	ISSUED FOR TENDER	DEC 7/23	ARM
3.	ISSUED FOR REVIEW	JUL 25/23	ARM
2.	ISSUED FOR COORDINATION	JUL 11/23	ARM
1.	ISSUED FOR COORDINATION	JAN 18/23	ARM

SCALE: 1:500

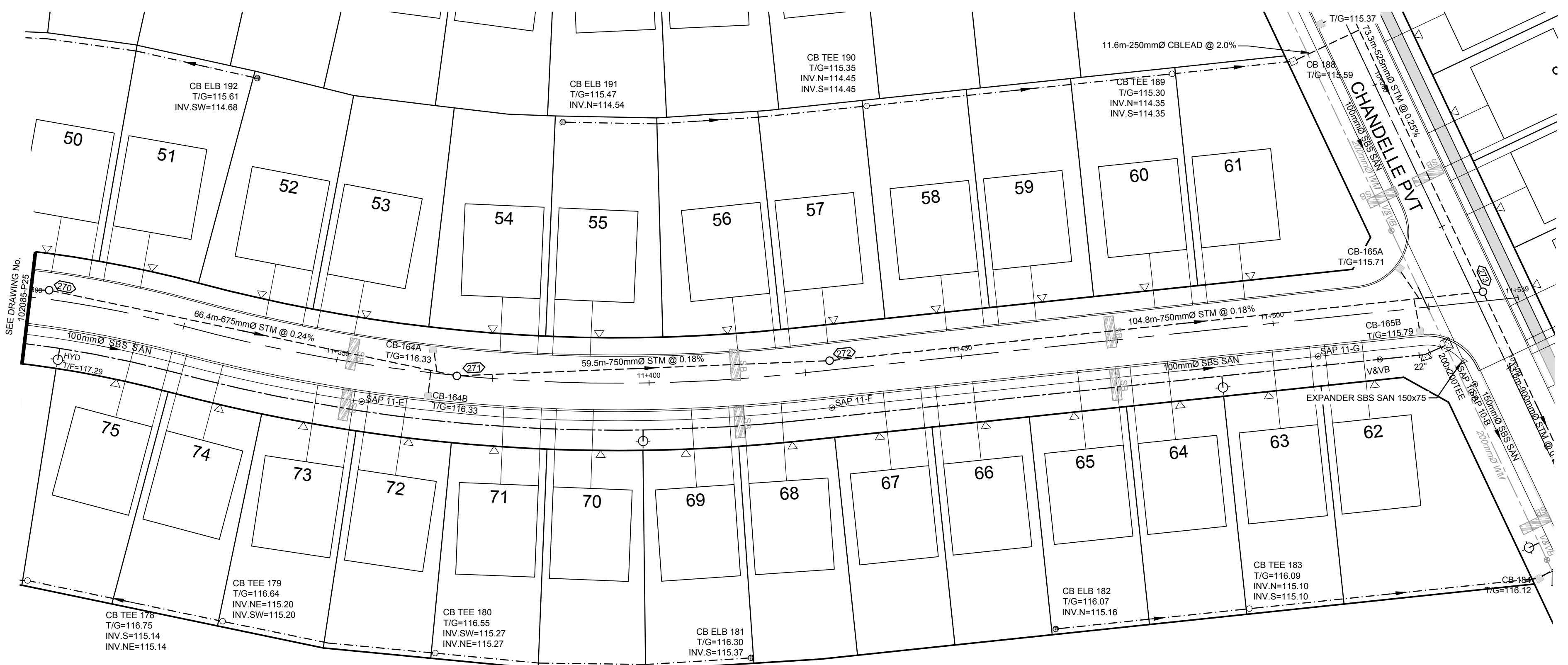
DESIGN: MNP
 CHECKED: ARM
 DRAWN: MNP
 APPROVED: ARM
 SMG

LOCATION:
 CITY OF OTTAWA
 WEST CAPITAL AIRPARK

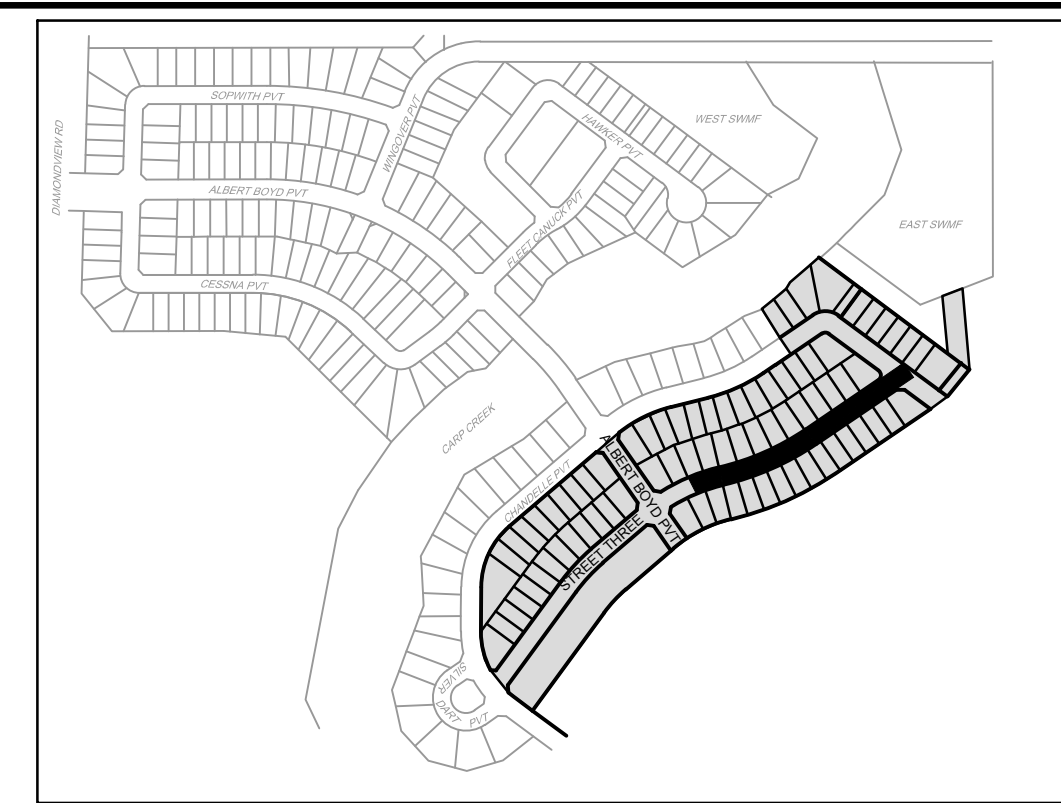
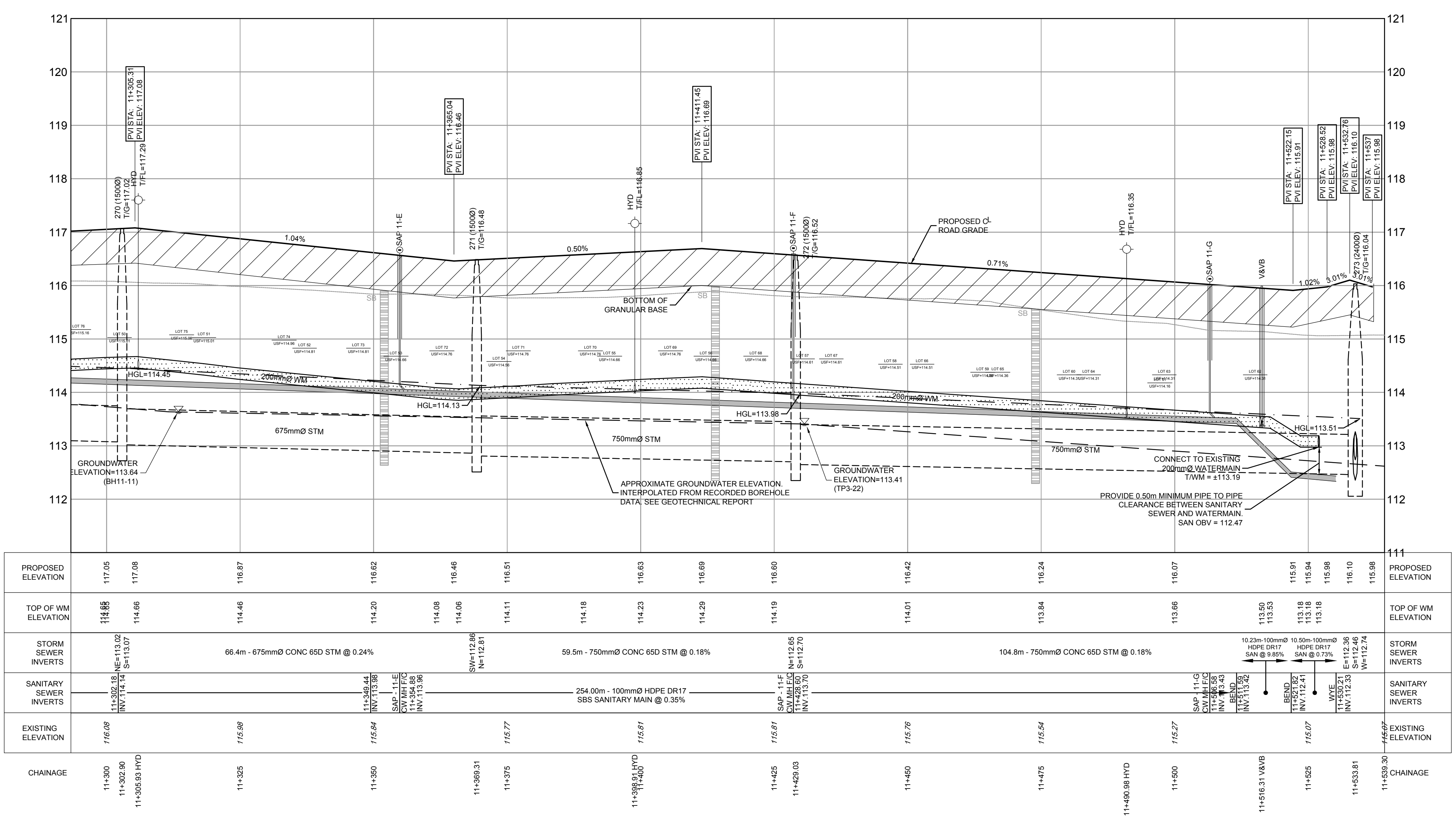
DRAWING NAME:
 PLAN & PROFILE - PHASE 1B-2
 STREET THREE
 STA 11+000 TO STA 11+300

PROJECT NO.: 102085
 REV: # 8
 DRAWING NO.: 102085-P25

Engineers, Planners & Landscape Architects:
 Suite 200, 240 Michael Cowpland Drive
 Ottawa, Ontario, Canada K2M 1P6
 Telephone: (613) 254-9643
 Facsimile: (613) 254-5867
 Website: www.novatech-eng.com



STREET THREE



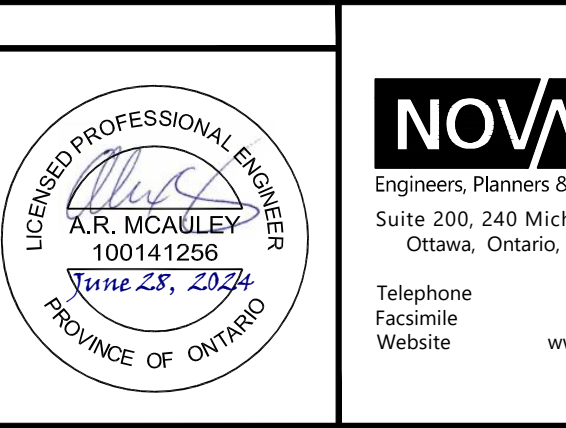
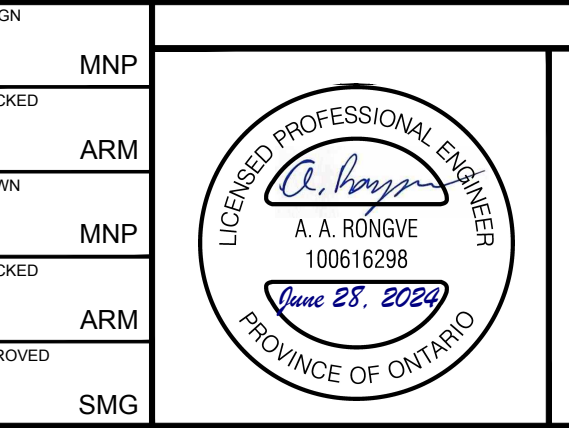
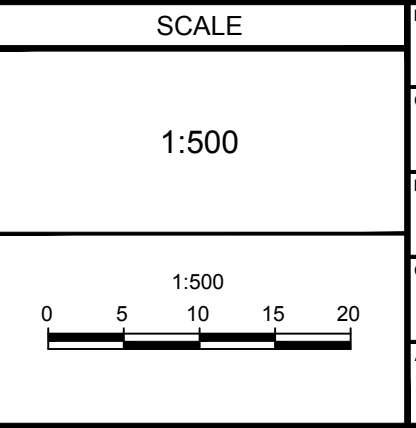
- #### LEGEND
- 200mm Ø WM: PROPOSED WATERMAIN AND DIAMETER
 - V&VB: PROPOSED VALVE & VALVE BOX
 - HYD: PROPOSED HYDRANT CW VALVE & LEAD
 - T/F = 08.45: PROPOSED TOP OF BOTTOM FLANGE
 - 200mm Ø EXM: EXISTING WATERMAIN AND DIAMETER
 - V&VB: EXISTING VALVE & VALVE BOX
 - HYD: EXISTING HYDRANT CW VALVE & LEAD
 - SBS SANITARY: PROPOSED SMALL BORE SEWER-SANITARY AND DIRECTION OF FLOW
 - SAP 1-A: PROPOSED SANITARY SYSTEM ACCESS POINT
 - SBS SANITARY: EXISTING SMALL BORE SEWER-SANITARY AND DIRECTION OF FLOW
 - SAP 1-A: EXISTING SANITARY SYSTEM ACCESS POINT
 - PROPOSED STORM SEWER AND DIRECTION OF FLOW
 - PROPOSED REAR YARD SUBDRAIN, INFILTRATION TRENCH AND DIRECTION OF FLOW
 - EXISTING STORM SEWER
 - PROPOSED STORM MANHOLE
 - EXISTING STORM MANHOLE
 - PROPOSED SERVICE LOCATION
 - SERVICE LOCATION - SERVICE INSTALLED AS PART OF PHASE 1B-1 WORKS
 - PROPOSED SERVICE LOCATION (WATER AND STORM)
 - PROPOSED SERVICE LOCATION (SANITARY ONLY)
 - 1.8m CONCRETE SIDEWALK
 - CB: PROPOSED CATCHBASIN
 - CB: PROPOSED CATCHBASIN WITH INLET CONTROL DEVICE
 - EXISTING ROADSIDE CATCHBASIN
 - CB ELB: PROPOSED LANDSCAPE CATCHBASIN ELBOW
 - CB TEE: PROPOSED LANDSCAPE CATCHBASIN TEE
 - SB: PROPOSED SEEPAGE BARRIER

REFER TO 102085-ND1B2 FOR ADDITIONAL NOTES

NOTE:
THE POSITION OF ALL POLE LINES, CONDUITS, WATERMANS, SEWERS AND OTHER UNDERGROUND AND OVERGROUND UTILITIES AND STRUCTURES IS NOT NECESSARILY SHOWN ON THE CONTRACT DRAWINGS, AND WHERE SHOWN, THE ACCURACY OF THE POSITION OF SUCH UTILITIES AND STRUCTURES IS NOT GUARANTEED. BEFORE STARTING WORK, DETERMINE THE EXACT LOCATION OF ALL SUCH UTILITIES AND STRUCTURES AND ASSUME ALL LIABILITY FOR DAMAGE TO THEM.



NO.	REVISION	DATE	BY
8	ISSUED FOR REGISTRATION AND ECA	JUN 19/24	ARM
7	REVISED PER CITY COMMENTS	FEB 20/24	ARM
6	REVISED PER CITY COMMENTS	FEB 9/24	ARM
5	ISSUED WITH ADDENDUM #2	JAN 5/24	ARM
4	ISSUED FOR TENDER	DEC 7/23	ARM
3	ISSUED FOR REVIEW	JUL 25/23	ARM
2	ISSUED FOR COORDINATION	JUL 11/23	ARM
1	ISSUED FOR COORDINATION	JAN 18/23	ARM

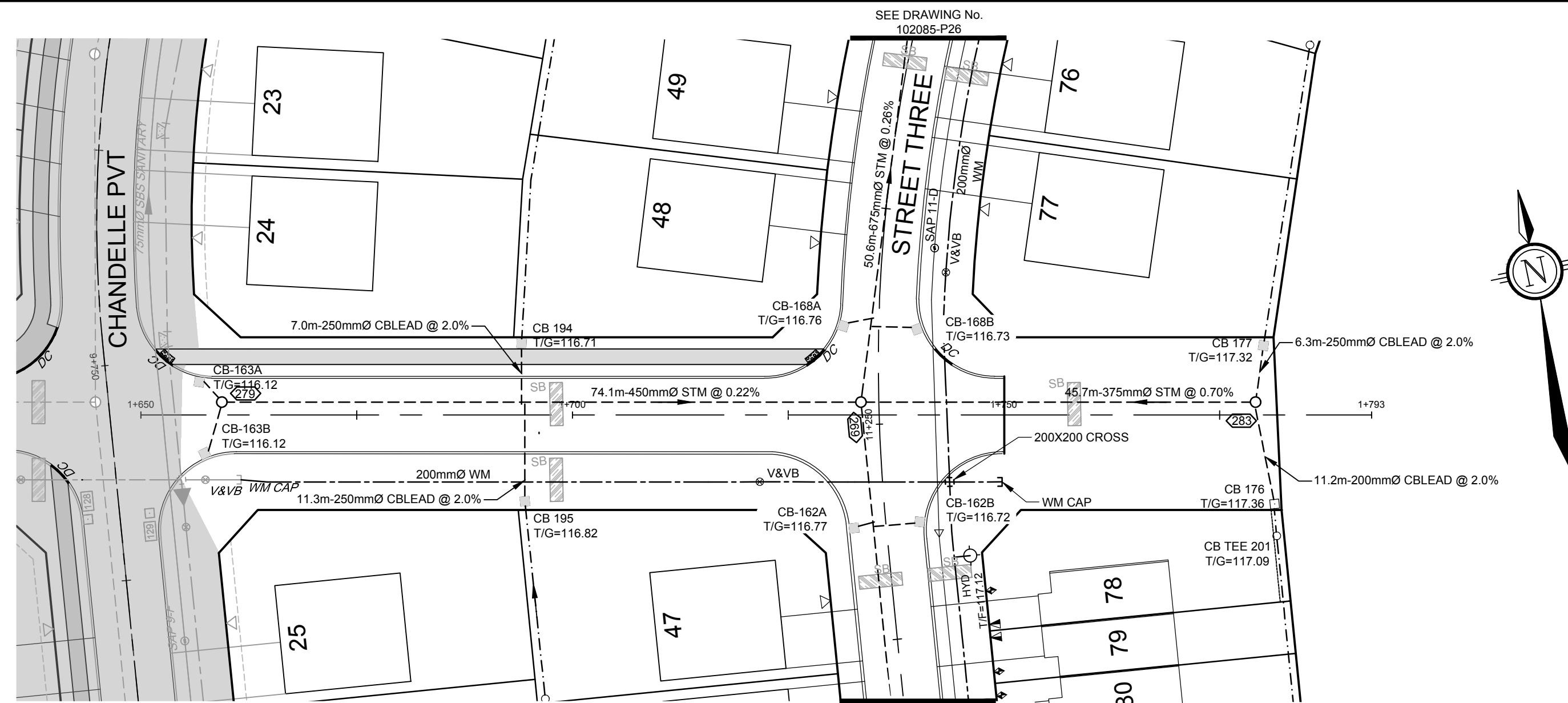


LOCATION
CITY OF OTTAWA
WEST CAPITAL AIRPARK

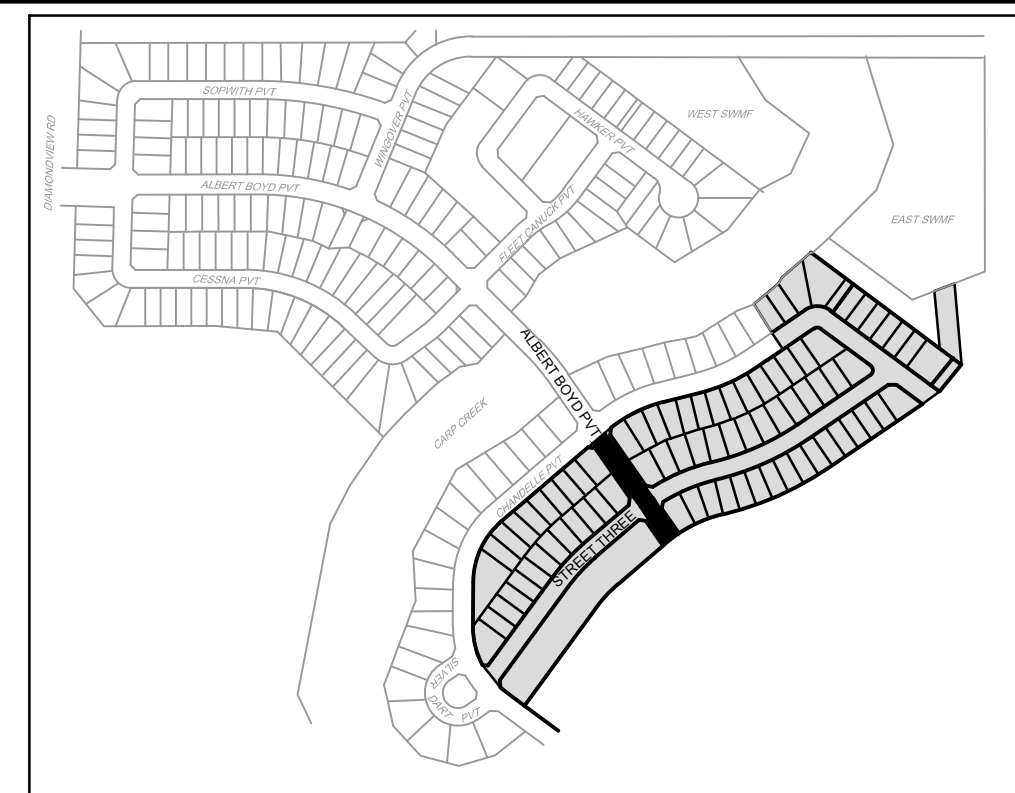
DRAWING NAME
PLAN & PROFILE - PHASE 1B-2
STREET THREE
STA 11+300 TO STA 11+539

PROJECT NO: 102085
REV # 8
DRAWING NO: 102085-P26

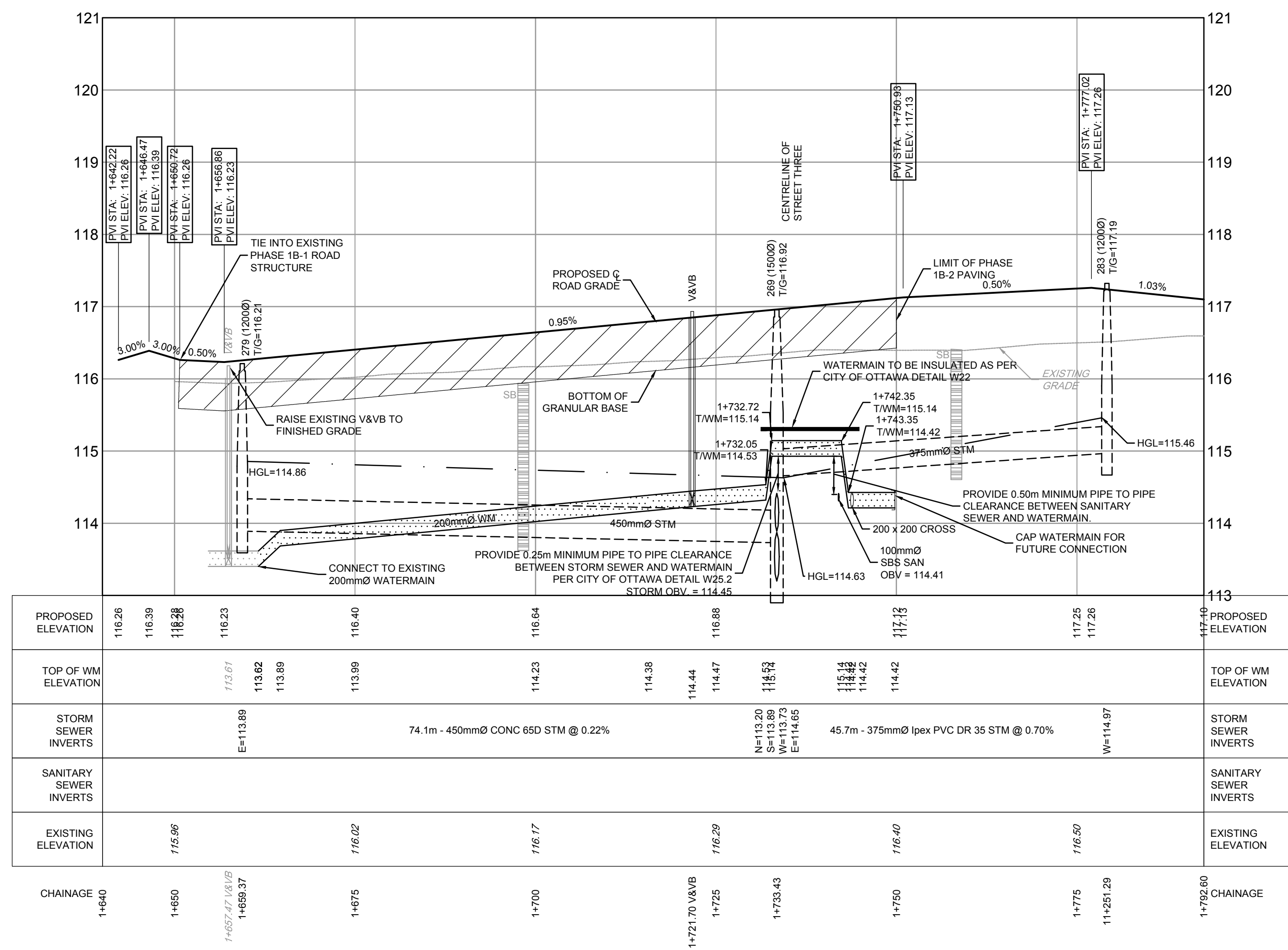
NOVATECH
Engineers, Planners & Landscape Architects
Suite 200, 240 Michael Cowpland Drive
Ottawa, Ontario, Canada K2M 1P6
Telephone: (613) 254-9643
Facsimile: (613) 254-5867
Website: www.novatech-eng.com



ALBERT BOYD PRIVATE

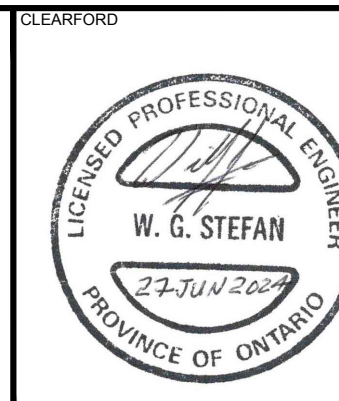


- ### LEGEND
- 200mm WM PROPOSED WATERMAIN AND DIAMETER
 - V&VB PROPOSED VALVE & VALVE BOX
 - HYD PROPOSED HYDRANT CW VALVE & LEAD
 - T/F = 98.45 PROPOSED TOP OF BOTTOM FLANGE
 - 200mm WM EXISTING WATERMAIN AND DIAMETER
 - V&VB EXISTING VALVE & VALVE BOX
 - HYD EXISTING HYDRANT CW VALVE & LEAD
 - SBS SANITARY PROPOSED SMALL BORE SEWER-SANITARY AND DIRECTION OF FLOW
 - SBS SANITARY PROPOSED SANITARY SYSTEM ACCESS POINT
 - SBS SANITARY EXISTING SMALL BORE SEWER-SANITARY AND DIRECTION OF FLOW
 - SBS SANITARY EXISTING SANITARY SYSTEM ACCESS POINT
 - PROPOSED STORM SEWER AND DIRECTION OF FLOW
 - EXISTING STORM SEWER
 - PROPOSED STORM MANHOLE
 - EXISTING STORM MANHOLE
 - PROPOSED SERVICE LOCATION
 - SERVICE LOCATION - SERVICE INSTALLED AS PART OF PHASE 1B-1 WORKS
 - PROPOSED SERVICE LOCATION (WATER AND STORM)
 - PROPOSED SERVICE LOCATION (SANITARY ONLY)
 - 1.8m CONCRETE SIDEWALK
 - PROPOSED CATCHBASIN
 - PROPOSED CATCHBASIN WITH INLET CONTROL DEVICE
 - EXISTING ROADSIDE CATCHBASIN
 - PROPOSED LANDSCAPE CATCHBASIN ELBOW
 - PROPOSED LANDSCAPE CATCHBASIN TEE
 - PROPOSED SEEPAGE BARRIER

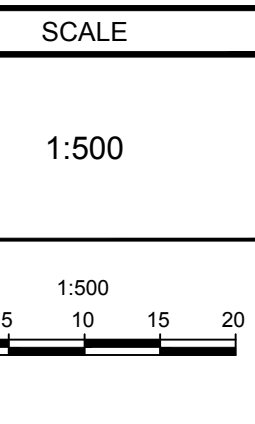


C:\2024\102085\CAD_P\PHASE1B\102085-2B1-P24-28.dwg P27 Jun 18 2024 10:07am emg

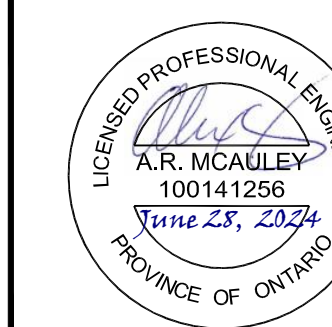
NOTE:
THE POSITION OF ALL POLE LINES, CONDUITS, WATERMANS, SEWERS AND OTHER UNDERGROUND AND OVERGROUND UTILITIES AND STRUCTURES IS NOT NECESSARILY SHOWN ON THE CONTRACT DRAWINGS, AND WHERE SHOWN, THE ACCURACY OF THE POSITION OF SUCH UTILITIES AND STRUCTURES IS NOT GUARANTEED. BEFORE STARTING WORK, DETERMINE THE EXACT LOCATION OF ALL SUCH UTILITIES AND STRUCTURES AND ASSUME ALL LIABILITY FOR DAMAGE TO THEM.



No.	REVISION	DATE	BY
8.	ISSUED FOR REGISTRATION AND ECA	JUN 19/24	ARM
7.	REVISED PER CITY COMMENTS	FEB 20/24	ARM
6.	REVISED PER CITY COMMENTS	FEB 9/24	ARM
5.	ISSUED WITH ADDENDUM #2	JAN 5/24	ARM
4.	ISSUED FOR TENDER	DEC 7/23	ARM
3.	ISSUED FOR REVIEW	JUL 25/23	ARM
2.	ISSUED FOR COORDINATION	JUL 11/23	ARM
1.	ISSUED FOR COORDINATION	JAN 18/23	ARM

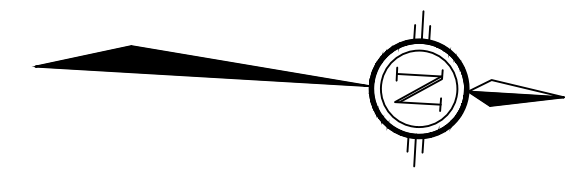
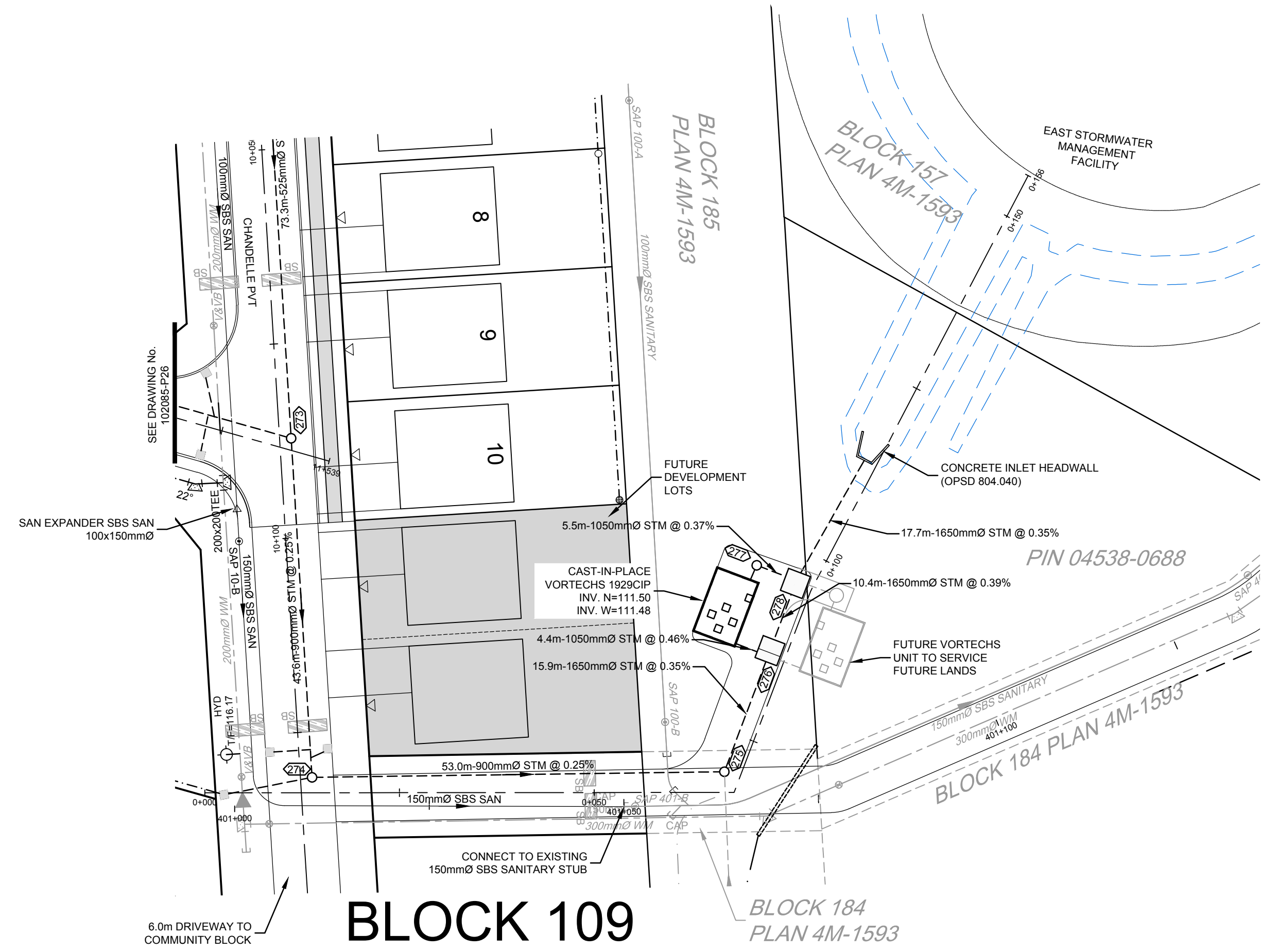
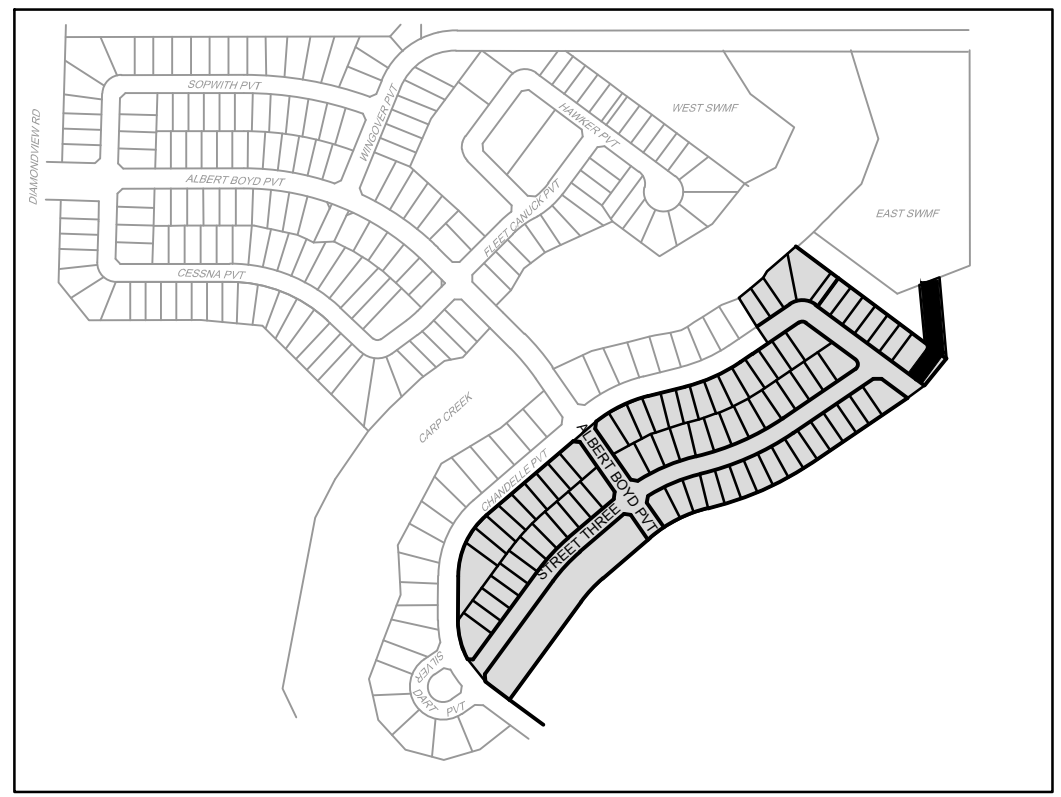


DESIGN	ARM
CHECKED	MNP
DRAWN	ARM
CHECKED	MNP
APPROVED	ARM
	SMG



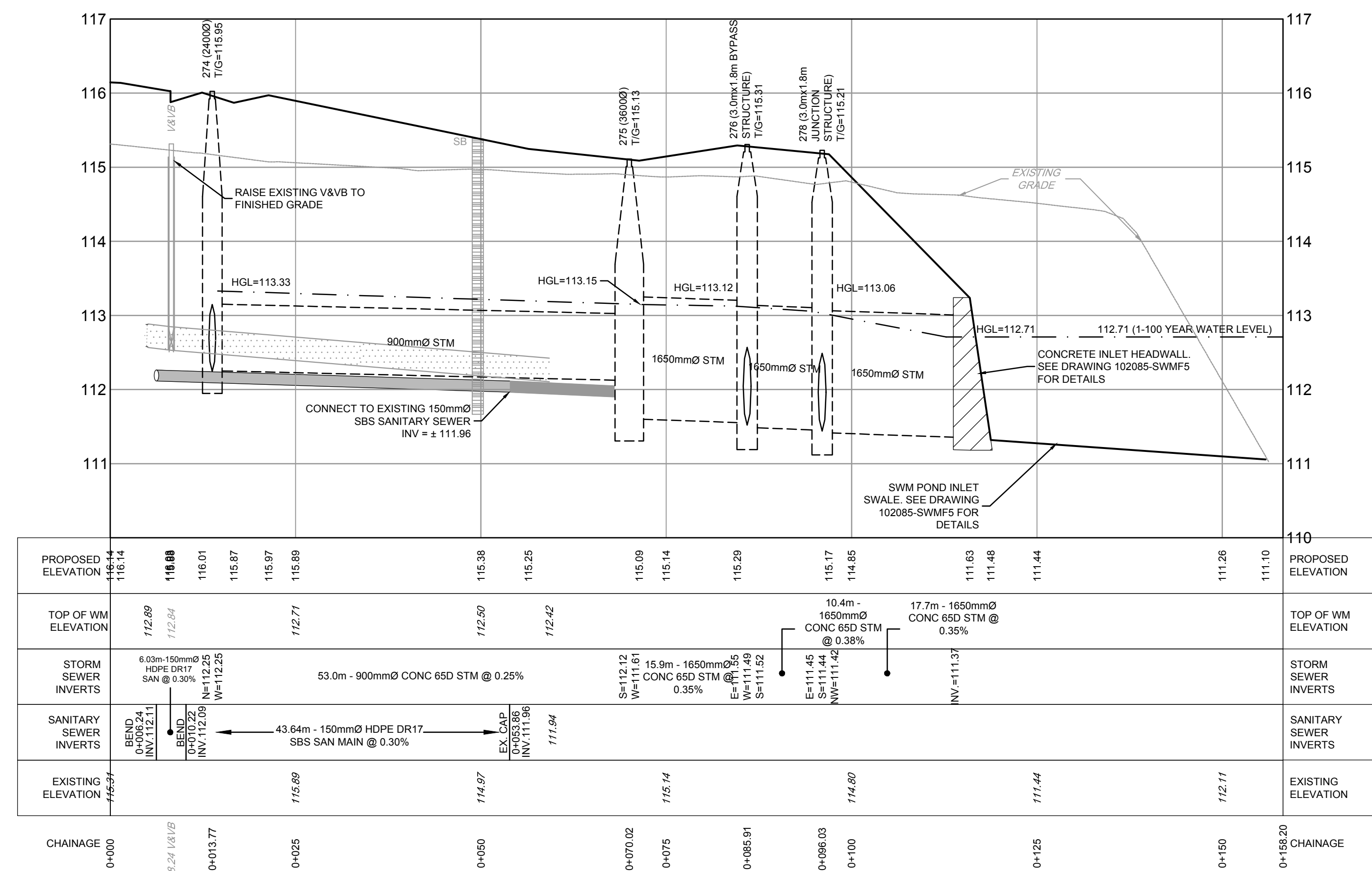
REFER TO 102085-ND1B2 FOR ADDITIONAL NOTES

DRAWING NAME		PROJECT No.
LOCATION CITY OF OTTAWA WEST CAPITAL AIRPARK		102085
PLAN & PROFILE - PHASE 1B-2 ALBERT BOYD PRIVATE STA 1+640 TO STA 1+792		REV # 8
DRAWING No.		102085-P27



LEGEND

- 200mm Ø WM: PROPOSED WATERMAIN AND DIAMETER
- V&VB: PROPOSED VALVE & VALVE BOX
- HYD: PROPOSED HYDRANT C/W VALVE & LEAD
- T.F. = 96.45: PROPOSED TOP OF BOTTOM FLANGE
- 200mm Ø WM: EXISTING WATERMAIN AND DIAMETER
- V&VB: EXISTING VALVE & VALVE BOX
- HYD: EXISTING HYDRANT C/W VALVE & LEAD
- SBS SANITARY: PROPOSED SMALL BORE SEWER-SANITARY AND DIRECTION OF FLOW
- SAP 1-A: PROPOSED SANITARY SYSTEM ACCESS POINT
- SBS SANITARY: EXISTING SMALL BORE SEWER-SANITARY AND DIRECTION OF FLOW
- SAP 1-A: EXISTING SANITARY SYSTEM ACCESS POINT
- Storm Sewer: PROPOSED STORM SEWER AND DIRECTION OF FLOW
- Storm Sewer: PROPOSED REAR YARD SUBDRAIN, INFILTRATION TRENCH AND DIRECTION OF FLOW
- Storm Sewer: EXISTING STORM SEWER
- Storm Manhole: PROPOSED STORM MANHOLE
- Storm Manhole: EXISTING STORM MANHOLE
- Service Location: PROPOSED SERVICE LOCATION
- Service Location: SERVICE LOCATION - SERVICE INSTALLED AS PART OF PHASE 1B-1 WORKS (WATER AND STORM)
- Service Location: PROPOSED SERVICE LOCATION (WATER AND STORM)
- Service Location: PROPOSED SERVICE LOCATION (SANITARY ONLY)
- 1.8m Concrete Sidewalk: 1.8m CONCRETE SIDEWALK
- CB: PROPOSED CATCHBASIN
- CB: PROPOSED CATCHBASIN WITH INLET CONTROL DEVICE
- CB: EXISTING ROADSIDE CATCHBASIN
- CB ELB: PROPOSED LANDSCAPE CATCHBASIN ELBOW
- CB TEE: PROPOSED LANDSCAPE CATCHBASIN TEE
- SB: PROPOSED SEEPAGE BARRIER

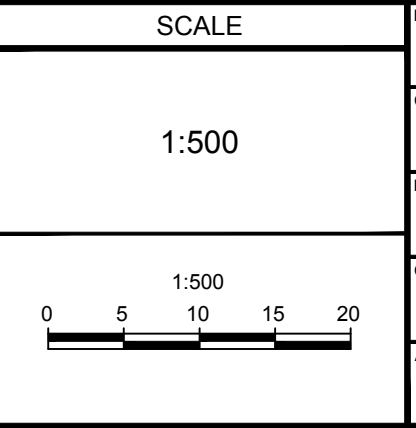


C:\2024\102085-P28-Phase 1B-1\Drawings\102085-P28-102085-281-P28-28.dwg P28 Jun 19 2024 4:34pm msherman

NOTE:
 THE POSITION OF ALL POLE LINES, CONDUITS, WATERMANS, SEWERS AND OTHER UNDERGROUND AND OVERGROUND UTILITIES AND STRUCTURES IS NOT NECESSARILY SHOWN ON THE CONTRACT DRAWINGS, AND WHERE SHOWN, THE ACCURACY OF THE POSITION OF SUCH UTILITIES AND STRUCTURES IS NOT GUARANTEED. BEFORE STARTING WORK, DETERMINE THE EXACT LOCATION OF ALL SUCH UTILITIES AND STRUCTURES AND ASSUME ALL LIABILITY FOR DAMAGE TO THEM.



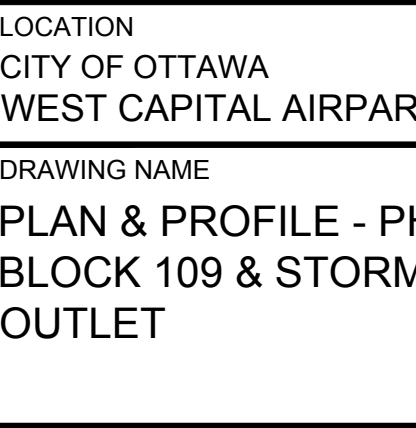
No.	REVISION	DATE	BY	No.	REVISION	DATE	BY
8	REVISED POND INLET SWALE	MAY 14/24	ARM	9	ISSUED FOR REGISTRATION AND ECA	JUN 19/24	ARM
7	REVISED PER CITY COMMENTS	FEB 20/24	ARM				
6	REVISED PER CITY COMMENTS	FEB 9/24	ARM				
5	ISSUED WITH ADDENDUM #2	JAN 5/24	ARM				
4	ISSUED FOR TENDER	DEC 7/23	ARM				
3	ISSUED FOR REVIEW	JUL 25/23	ARM				
2	ISSUED FOR COORDINATION	JUL 11/23	ARM				
1	ISSUED FOR COORDINATION	JAN 18/23	ARM				



DESIGN: MNP
 CHECKED: ARM
 DRAWN: MNP
 APPROVED: ARM
 SMG

SCALE: 1:500

0 5 10 15 20



NOVATECH
 Engineers, Planners & Landscape Architects
 Suite 200, 240 Michael Copland Drive
 Ottawa, Ontario, Canada K2M 1P6
 Telephone: (613) 254-9643
 Facsimile: (613) 254-5867
 Website: www.novatech-eng.com

REFER TO 102085-ND1B2 FOR ADDITIONAL NOTES

LOCATION:
 CITY OF OTTAWA
 WEST CAPITAL AIRPARK

DRAWING NAME:
 PLAN & PROFILE - PHASE 1B-2
 BLOCK 109 & STORM SEWER
 OUTLET

PROJECT No.: 102085
 REV: REV # 9
 DRAWING No.: 102085-P28