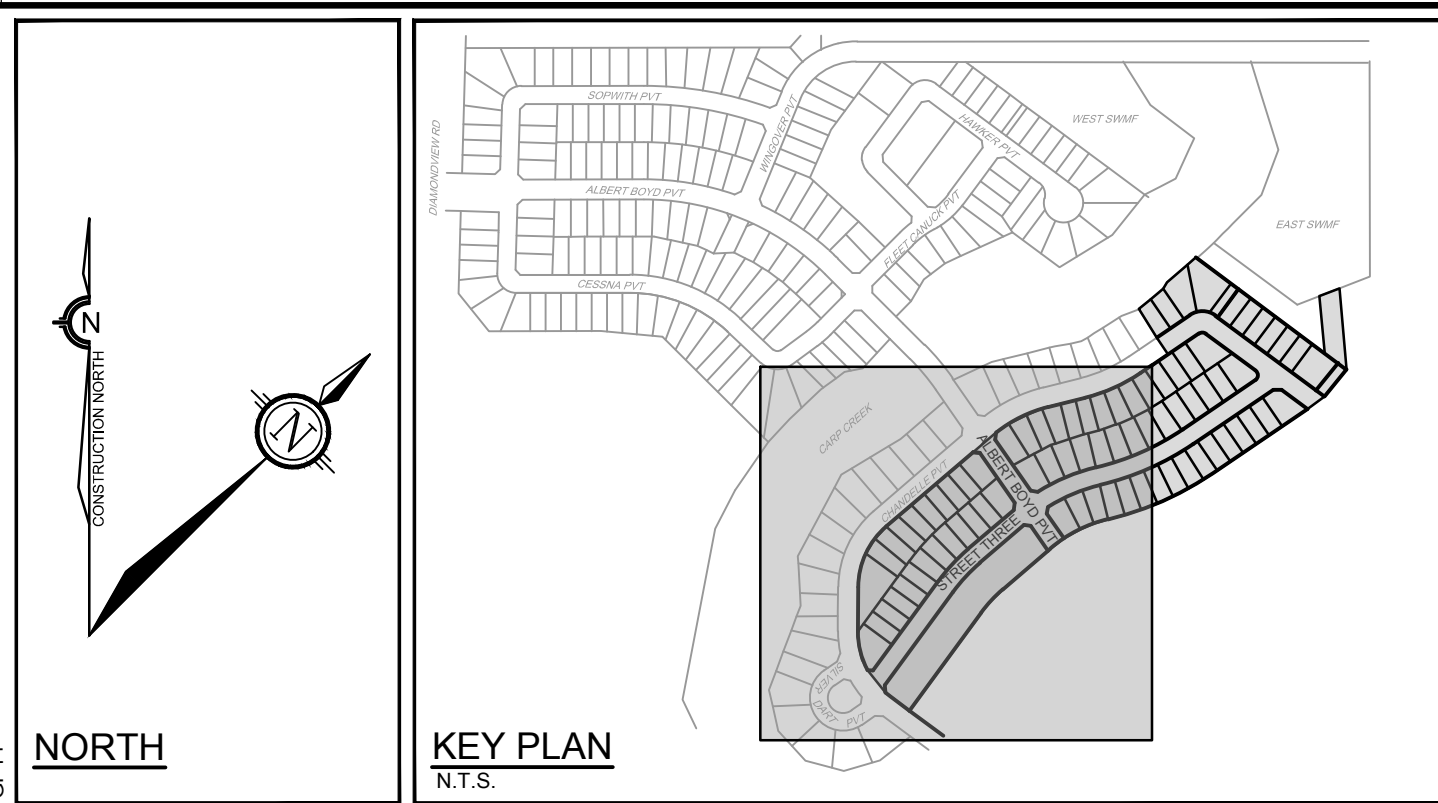
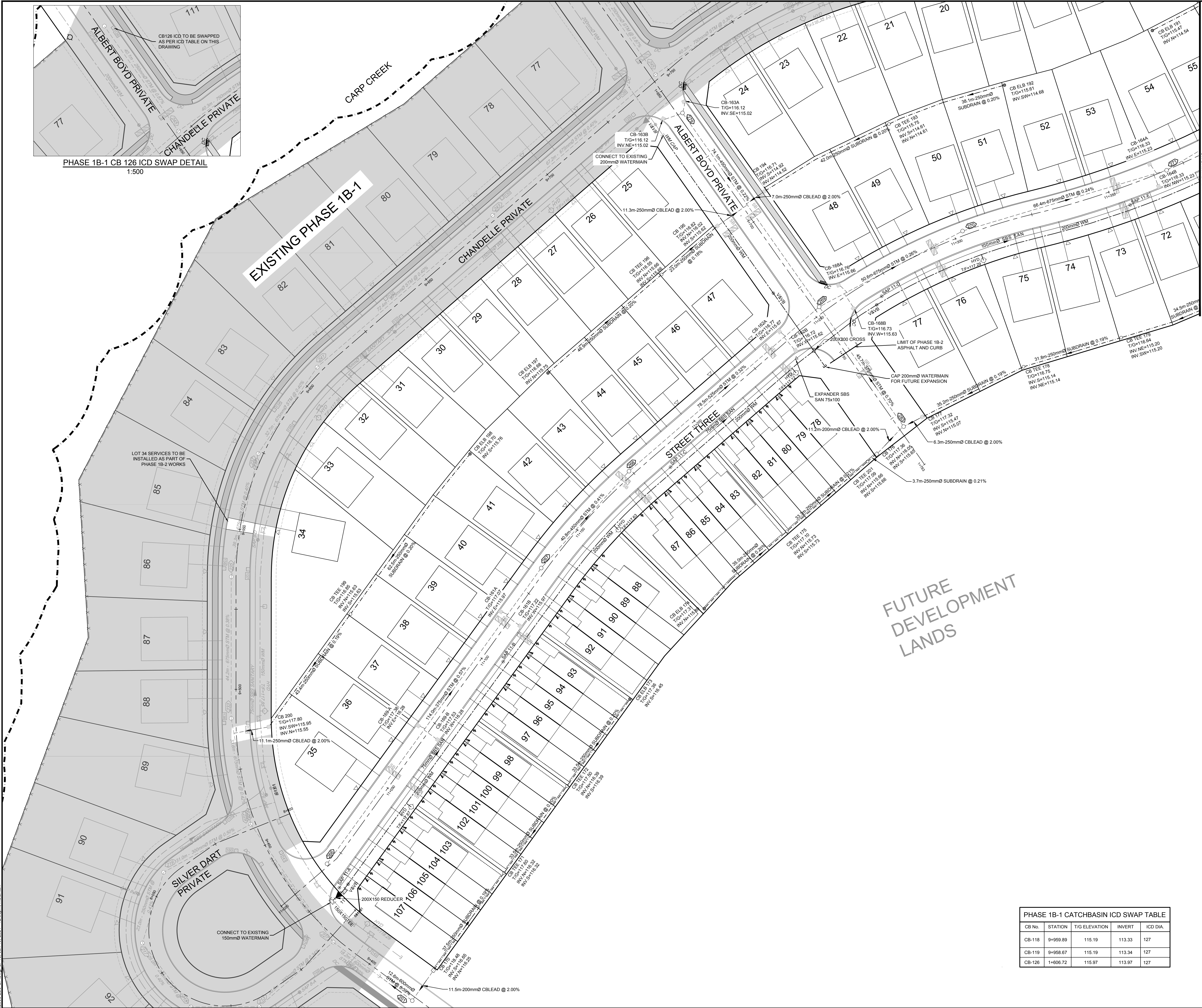


PHASE 1B-1 CB 126 ICD SWAP DETAIL
1:500



LEGEND

- 200mm Ø WM: PROPOSED WATERMAIN AND DIAMETER
- V&VB: PROPOSED VALVE & VALVE BOX
- HYD: PROPOSED HYDRANT C/W VALVE & LEAD
- T/F = 98.45: PROPOSED TOP OF BOTTOM FLANGE
- 200mm Ø HW: EXISTING WATERMAIN AND DIAMETER
- V&VB: EXISTING VALVE & VALVE BOX
- HYD: EXISTING HYDRANT C/W VALVE & LEAD
- SBS SANITARY: PROPOSED SMALL BORE SEWER, SANITARY AND DIRECTION OF FLOW
- SAP 1-A: PROPOSED SANITARY SYSTEM ACCESS POINT
- SBS SANITARY: EXISTING SMALL BORE SEWER, SANITARY AND DIRECTION OF FLOW
- SAP 1-A: EXISTING SANITARY SYSTEM ACCESS POINT
- PROPOSED STORM SEWER AND DIRECTION OF FLOW
- PROPOSED REAR YARD SUBDRAIN, INFILTRATION TRENCH AND DIRECTION OF FLOW
- EXISTING STORM SEWER
- PROPOSED STORM MANHOLE
- EXISTING STORM MANHOLE
- PROPOSED SERVICE LOCATION
- SERVICE LOCATION - SERVICE INSTALLED AS PART OF PHASE 1B-1 WORKS
- PROPOSED SERVICE LOCATION (WATER AND STORM)
- PROPOSED SERVICE LOCATION (SANITARY ONLY)
- 1.8m CONCRETE SIDEWALK
- CB: PROPOSED CATCHBASIN
- CB: PROPOSED CATCHBASIN WITH INLET CONTROL DEVICE
- EXISTING ROADSIDE CATCHBASIN
- CB ELB: PROPOSED LANDSCAPE CATCHBASIN ELBOW
- CB TEE: PROPOSED LANDSCAPE CATCHBASIN TEE
- PROPOSED SEEPAGE BARRIER



FUTURE DEVELOPMENT LANDS

PHASE 1B-1 CATCHBASIN ICD SWAP TABLE

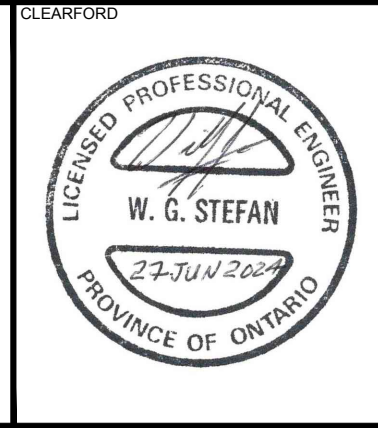
CB No.	STATION	TIG ELEVATION	INVERT	ICD DIA.
CB-118	9+959.89	115.19	113.33	127
CB-119	9+958.67	115.19	113.34	127
CB-126	1+006.72	115.97	113.97	127

CATCHBASIN TABLE

CB No.	STATION	TIG ELEVATION	INVERT	ICD DIA.	OUTLET DIAMETER
CB-161A	11+115.31	117.07	Out+115.97	152	200
CB-161B	11+115.22	117.22	Out+115.97	127	200
CB-162A	11+238.29	116.77	Out+115.67	108	200
CB-162B	11+238.17	116.72	Out+115.62	108	200
CB-163A	1+656.85	116.12	Out+115.02	108	200
CB-163B	1+657.80	116.12	Out+115.02	108	200
CB-164A	11+365.08	116.33	Out+115.23	127	200
CB-164B	11+365.08	116.33	Out+115.23	127	200
CB-165A	11+520.63	115.71	Out+114.61	152	200
CB-165B	11+523.18	115.79	Out+114.69	127	200
CB-166A	10+037.41	115.37	Out+114.27	94	200
CB-166B	11+512.01	115.37	Out+114.27	83	200
CB-167A	10+127.29	115.85	Out+114.75	94	200
CB-167B	10+127.29	115.85	Out+114.75	94	200
CB-168A	11+261.42	116.76	Out+115.66	83	200
CB-168B	11+261.28	116.73	Out+115.63	83	200
CB-169-A	11+071.35	117.38	Out+116.28	83	200
CB-169-B	11+071.36	117.53	Out+116.28	83	200
CB 170	9+382.72	118.48	Out+116.65 In+116.25	200(LEAD)	200
CB 176	1+781.37	117.36	Out+116.05 In+115.65	200 (LEAD)	200
CB 177	1+780.07	117.32	Out+115.47 In+115.07	178	250
CB 184	10+132.39	116.12	Out+115.40 In+115.00	152	250
CB 187	10+005.76	114.78	In+113.18 Out+113.58	94	250
CB 188	10+041.03	115.59	Out+114.72 In+114.31	250 (LEAD)	250
CB 194	1+694.10	116.71	Out+114.92 In+114.52	178	250
CB 195	1+694.48	116.82	Out+116.02 In+115.62	152	250
CB 200	9+487.97	117.80	Out+115.95 In+115.55	152	250

REFER TO 102085-ND1B2 FOR ADDITIONAL NOTES

NOTE:
THE POSITION OF ALL POLE LINES, CONDUITS, WATERMANS, SEWERS AND OTHER UNDERGROUND AND OVERGROUND UTILITIES AND STRUCTURES IS NOT NECESSARILY SHOWN ON THE CONTRACT DRAWINGS, AND WHERE SHOWN, THE ACCURACY OF THE POSITION OF SUCH UTILITIES AND STRUCTURES IS NOT GUARANTEED. BEFORE STARTING WORK, DETERMINE THE EXACT LOCATION OF ALL SUCH UTILITIES AND STRUCTURES AND ASSUME ALL LIABILITY FOR DAMAGE TO THEM.



No.	REVISION	DATE	BY
8	ISSUED FOR REGISTRATION AND ECA	JUN 19/24	ARM
7	REVISED PER CITY COMMENTS	FEB 20/24	ARM
6	REVISED PER CITY COMMENTS	FEB 9/24	ARM
5	ISSUED WITH ADDENDUM #2	JAN 5/24	ARM
4	ISSUED FOR TENDER	DEC 7/23	ARM
3	ISSUED FOR REVIEW	JUL 25/23	ARM
2	ISSUED FOR COORDINATION	JUL 11/23	ARM
1	ISSUED FOR COORDINATION	JAN 18/23	ARM

SCALE: 1:500

0 5 10 15 20

APPROVED: SMG

DESIGN: MNP

CHECKED: ARM

DRAWN: MNP

PROFESSIONAL ENGINEER: A.A. RONDIE, 100616298, Since 88, 2024, PROVINCE OF ONTARIO

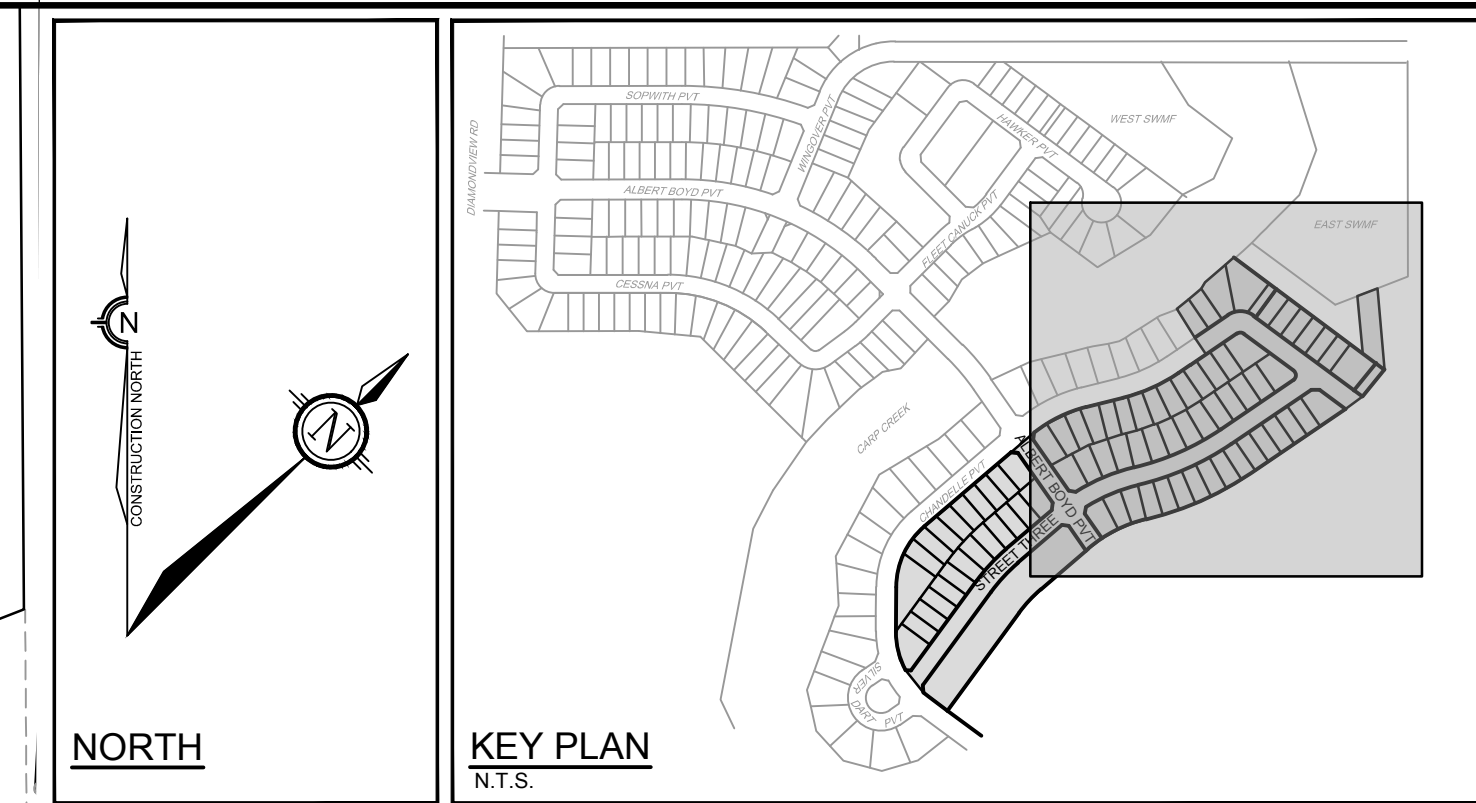
PROFESSIONAL ENGINEER: A.R. MCALLEY, 100141256, Since 25, 2024, PROVINCE OF ONTARIO

NOVATECH
Engineers, Planners & Landscape Architects
Suite 200, 240 Michael Copland Drive
Ottawa, Ontario, Canada K2M 1P6
Telephone: (613) 254-9643
Facsimile: (613) 254-5867
Website: www.novatech-eng.com

LOCATION: CITY OF OTTAWA WEST CAPITAL AIRPARK
DRAWING NAME: GENERAL PLAN OF SERVICES - PHASE 1B-2

PROJECT No.: 102085
REV # 8
DRAWING No.: 102085-GP13

EAST STORMWATER MANAGEMENT FACILITY



LEGEND

- 200mm Ø WM: PROPOSED WATERMAIN AND DIAMETER
- Ø V&VB: PROPOSED VALVE & VALVE BOX
- ◇ HYD: PROPOSED HYDRANT C/W VALVE & LEAD
- T/F = 98.45: PROPOSED TOP OF BOTTOM FLANGE
- 200mm Ø WM: EXISTING WATERMAIN AND DIAMETER
- Ø V&VB: EXISTING VALVE & VALVE BOX
- ◇ HYD: EXISTING HYDRANT C/W VALVE & LEAD
- SBS SANITARY: PROPOSED SMALL BORE SEWER, SANITARY AND DIRECTION OF FLOW
- ⊙ SAP 1-A: PROPOSED SANITARY SYSTEM ACCESS POINT
- SBS SANITARY: EXISTING SMALL BORE SEWER, SANITARY AND DIRECTION OF FLOW
- ⊙ SAP 1-A: EXISTING SANITARY SYSTEM ACCESS POINT
- : PROPOSED STORM SEWER AND DIRECTION OF FLOW
- : PROPOSED REAR YARD SUBDRAIN, INFILTRATION TRENCH AND DIRECTION OF FLOW
- : EXISTING STORM SEWER
- : PROPOSED STORM MANHOLE
- : EXISTING STORM MANHOLE
- ▽: PROPOSED SERVICE LOCATION
- ▽: SERVICE LOCATION - SERVICE INSTALLED AS PART OF PHASE 1B-1 WORKS
- ▽: PROPOSED SERVICE LOCATION (WATER AND STORM)
- ▽: PROPOSED SERVICE LOCATION (SANITARY ONLY)
- : 1.8m CONCRETE SIDEWALK
- CB: PROPOSED CATCHBASIN
- CB: PROPOSED CATCHBASIN WITH INLET CONTROL DEVICE
- : EXISTING ROADSIDE CATCHBASIN
- ⊙ CB ELB: PROPOSED LANDSCAPE CATCHBASIN ELBOW
- ⊙ CB TEE: PROPOSED LANDSCAPE CATCHBASIN TEE
- SB: PROPOSED SEEPAGE BARRIER

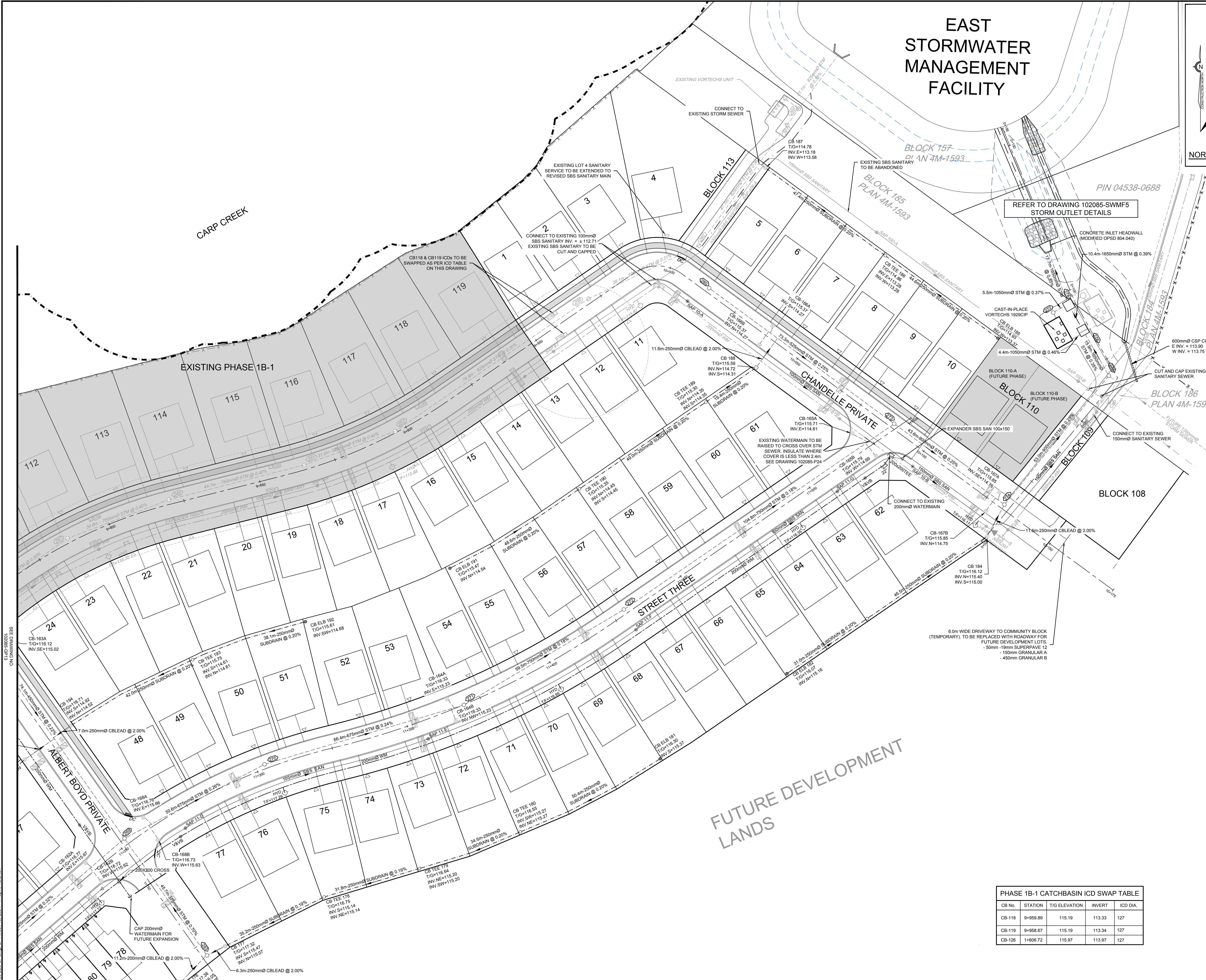
CATCHBASIN TABLE

CB No.	STATION	T/G ELEVATION	INVERT	ICD DIA.	OUTLET DIAMETER
CB-161A	11+115.31	117.07	Out=115.97	152	200
CB-161B	11+115.22	117.22	Out=115.97	127	200
CB-162A	11+238.29	116.77	Out=115.67	108	200
CB-162B	11+238.17	116.72	Out=115.62	108	200
CB-163A	1+656.85	116.12	Out=115.02	108	200
CB-163B	1+657.60	116.12	Out=115.02	108	200
CB-164A	11+365.08	116.33	Out=115.23	127	200
CB-164B	11+365.08	116.33	Out=115.23	127	200
CB-165A	11+520.63	115.71	Out=114.61	152	200
CB-165B	11+523.18	115.79	Out=114.69	127	200
CB-166A	10+037.41	115.37	Out=114.27	94	200
CB-166B	11+512.01	115.37	Out=114.27	83	200
CB-167A	10+127.29	115.85	Out=114.75	94	200
CB-167B	10+127.29	115.85	Out=114.75	94	200
CB-168A	11+261.42	116.76	Out=115.66	83	200
CB-168B	11+261.28	116.73	Out=115.63	83	200
CB-169-A	11+071.35	117.38	Out=116.28	83	200
CB-169-B	11+071.36	117.53	Out=116.29	83	200
CB-170	9+382.72	118.48	In=116.65 In=116.25	200(LEAD)	200
CB-176	1+781.37	117.36	Out=118.05 In=115.95	200 (LEAD)	200
CB-177	1+780.07	117.32	Out=115.47 In=115.07	178	250
CB-184	10+132.39	116.12	Out=115.40 In=115.00	152	250
CB-187	10+005.76	114.78	In=113.18 Out=113.58	94	250
CB-188	10+041.03	115.59	Out=114.72 In=114.31	250 (LEAD)	250
CB-194	1+694.10	116.71	Out=114.92 In=114.52	178	250
CB-195	1+694.48	116.82	Out=116.02 In=115.62	152	250
CB-200	9+487.97	117.80	Out=115.95 In=115.55	152	250

PHASE 1B-1 CATCHBASIN ICD SWAP TABLE

CB No.	STATION	T/G ELEVATION	INVERT	ICD DIA.
CB-118	9+959.89	115.19	113.33	127
CB-119	9+958.67	115.19	113.34	127
CB-126	1+606.72	115.97	113.97	127

REFER TO 102085-ND1B2 FOR ADDITIONAL NOTES



NOTE:
THE POSITION OF ALL POLE LINES, CONDUITS, WATERMANS, SEWERS AND OTHER UNDERGROUND AND OVERGROUND UTILITIES AND STRUCTURES IS NOT NECESSARILY SHOWN ON THE CONTRACT DRAWINGS, AND WHERE SHOWN, THE ACCURACY OF THE POSITION OF SUCH UTILITIES AND STRUCTURES IS NOT GUARANTEED. BEFORE STARTING WORK, DETERMINE THE EXACT LOCATION OF ALL SUCH UTILITIES AND STRUCTURES AND ASSUME ALL LIABILITY FOR DAMAGE TO THEM.

CLEARFORD WATER SYSTEMS INC. logo and WEST CAPITAL Developments logo.

No.	REVISION	DATE	BY	No.	REVISION	DATE	BY
8.	REVISED PER CITY COMMENTS	FEB 2024	ARM	10.	ISSUED FOR REGISTRATION AND ECA	JUN 19 2024	ARM
7.	REVISED PER CITY COMMENTS	FEB 9 2024	ARM	9.	REVISED POND INLET SWALE	MAY 14 2024	ARM
6.	ISSUED WITH ADDENDUM #4	JAN 12 2024	ARM				
5.	ISSUED WITH ADDENDUM #2	JAN 5 2024	ARM				
4.	ISSUED FOR TENDER	DEC 7 2023	ARM				
3.	ISSUED FOR REVIEW	JUL 25 2023	ARM				
2.	ISSUED FOR COORDINATION	JUL 11 2023	ARM				
1.	ISSUED FOR COORDINATION	JAN 18 2023	ARM				

SCALE: 1:500. Includes professional engineer seals for A. A. Ronve and A.R. McAuley.

NOVATECH logo and project information: CITY OF OTTAWA WEST CAPITAL AIRPARK, DRAWING NAME: GENERAL PLAN OF SERVICES - PHASE 1B-2, PROJECT NO: 1020852, REV # 10, DRAWING NO: 102085-GP14.