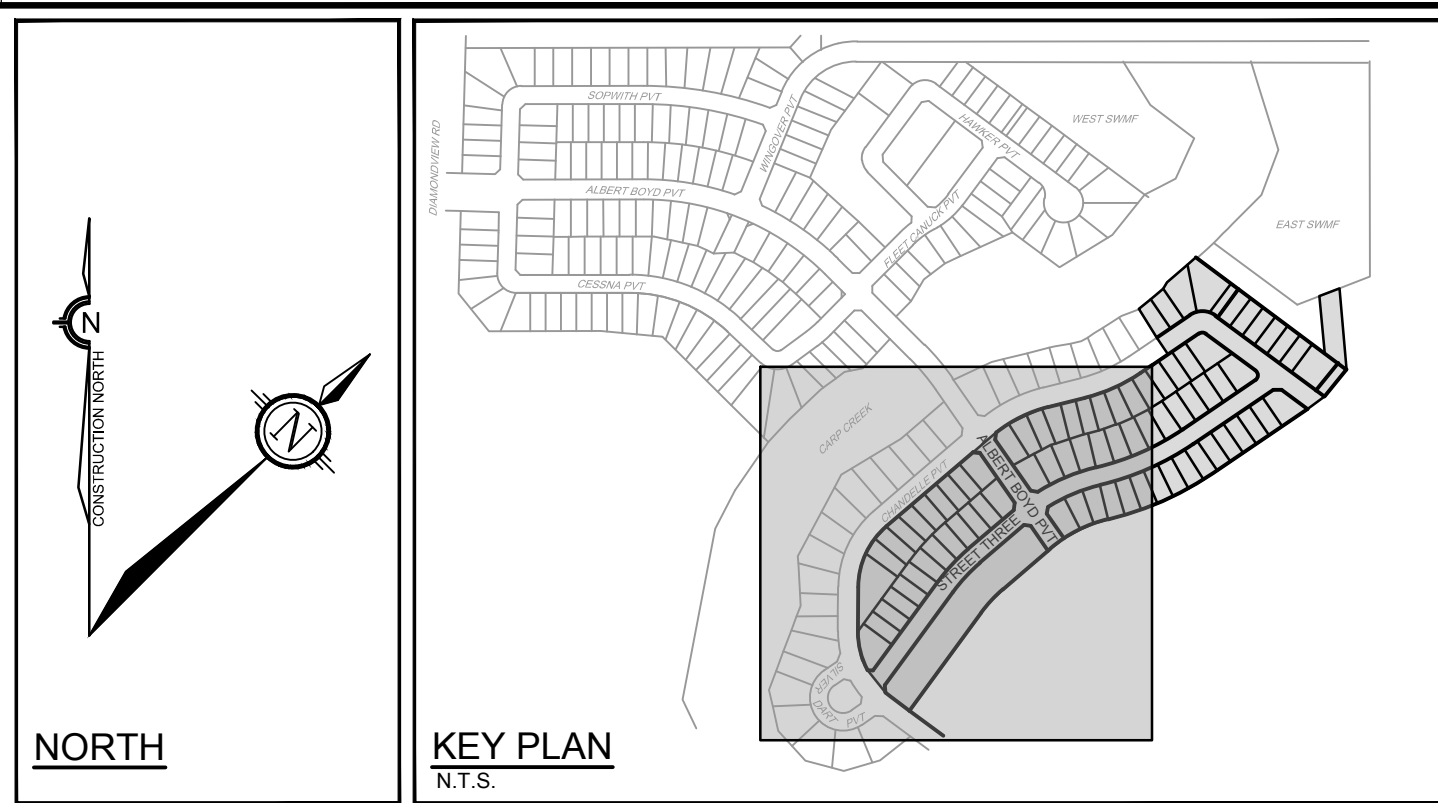
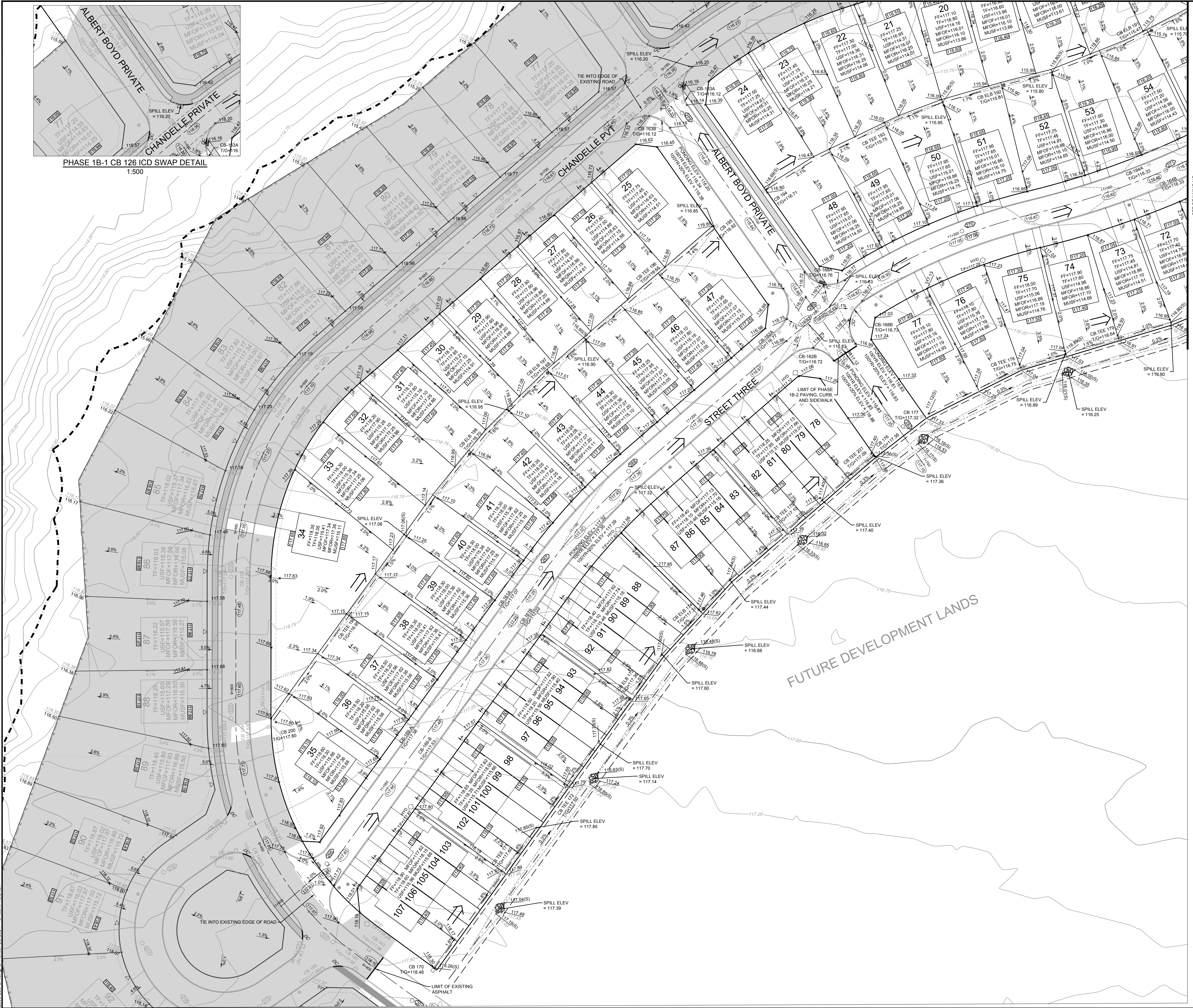


PHASE 1B-1 CB 126 ICD SWAP DETAIL
1:500



LEGEND

1.5%	REAR YARD SWALE AND DIRECTION OF FLOW
PROPOSED ELEVATION	
EXISTING ELEVATION	
PROPOSED SWALE ELEVATION	
PROPOSED GRADING DIRECTION AND SLOPE	
TF=117.03	TOP OF FOUNDATION ELEVATION (STANDARD @ BASEMENT HEIGHT)
MUSF=114.28	MINIMUM UNDERSIDE OF FOOTINGS ELEVATION
MFOP=116.63	MINIMUM FOUNDATION OPENING FRONT ELEVATION
MFOR=115.32	MINIMUM FOUNDATION OPENING REAR ELEVATION
116.63	PROPOSED TERRACE ELEVATION
116.90	PROPOSED CENTRELINE OF ROAD ELEVATION
116.90	PROPOSED CENTRELINE OF ROAD ELEVATION - HIGH POINT
116.90	PROPOSED CENTRELINE OF ROAD ELEVATION - LOW POINT
HYD	PROPOSED HYDRANT LOCATION
T/127.55	PROPOSED TOP OF BOTTOM FLANGE
WS	PROPOSED WATER SAMPLING STATION
CB	PROPOSED CATCHBASIN
CB	PROPOSED CATCHBASIN WITH INLET CONTROL DEVICE
CB ELB	PROPOSED LANDSCAPE CATCHBASIN ELBOW
CB TEE	PROPOSED LANDSCAPE CATCHBASIN TEE
SMH	PROPOSED STORM MANHOLE
TERRACING	
MAJOR OVERLAND FLOW	
DEVELOPMENT SETBACK	
PROPOSED 1.5m CHAINLINK FENCE	
PROPOSED 1.5m UTILITY EASEMENT	
PROPOSED TOP OF SLOPE	
PROPOSED ROCK FLOW CHECK DAM (MODIFIED OPSD 219.211)	
MAXIMUM STATIC PONDING CONTOUR	

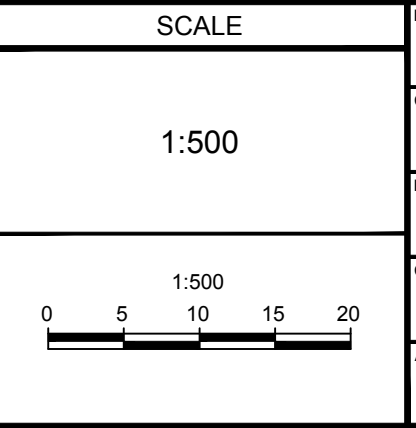


FUTURE DEVELOPMENT LANDS

NOTE:
THE POSITION OF ALL POLE LINES, CONDUITS, WATERMANS, SEWERS AND OTHER UNDERGROUND AND OVERGROUND UTILITIES AND STRUCTURES IS NOT NECESSARILY SHOWN ON THE CONTRACT DRAWINGS, AND WHERE SHOWN, THE ACCURACY OF THE POSITION OF SUCH UTILITIES AND STRUCTURES IS NOT GUARANTEED. BEFORE STARTING WORK, DETERMINE THE EXACT LOCATION OF ALL SUCH UTILITIES AND STRUCTURES AND ASSUME ALL LIABILITY FOR DAMAGE TO THEM.

REFER TO 102085-ND1B2 FOR ADDITIONAL NOTES

NO.	REVISION	DATE	BY
7	ISSUED FOR REGISTRATION AND ECA	JUN 28/24	ARM
6	ADDITIONAL ORIGINAL GROUND SURFACE CONTOUR INTERVALS ADDED	APR 24/24	ARM
5	REVISED PER CITY COMMENTS	FEB 20/24	ARM
4	ISSUED WITH ADDENDUM #2	JAN 5/24	ARM
3	ISSUED FOR TENDER (NO CHANGES)	DEC 7/23	ARM
2	ISSUED FOR REVIEW	JULY 29/23	ARM
1	ISSUED FOR COORDINATION	JAN 18/23	ARM



SCALE: 1:500

DESIGN: MNP

CHECKED: ARM

DRAWN: MNP

CHECKED: ARM

APPROVED: SMG

PROFESSIONAL ENGINEER
A.A. RONGIE
100616238
June 28, 2024
PROVINCE OF ONTARIO

PROFESSIONAL ENGINEER
A.R. MCALLEY
100141256
June 28, 2024
PROVINCE OF ONTARIO

NOVATECH
Engineers, Planners & Landscape Architects
Suite 200, 240 Michael Cowpland Drive
Ottawa, Ontario, Canada K2M 1P6
Telephone: (613) 254-9643
Facsimile: (613) 254-5867
Website: www.novatech-eng.com

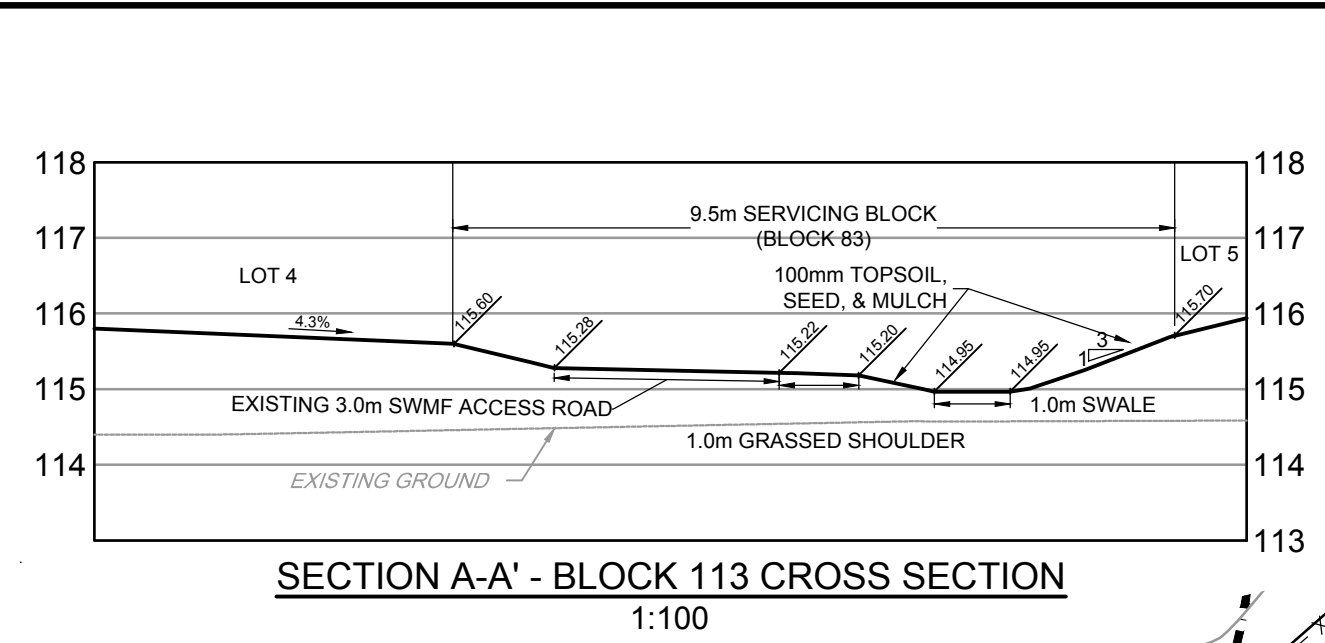
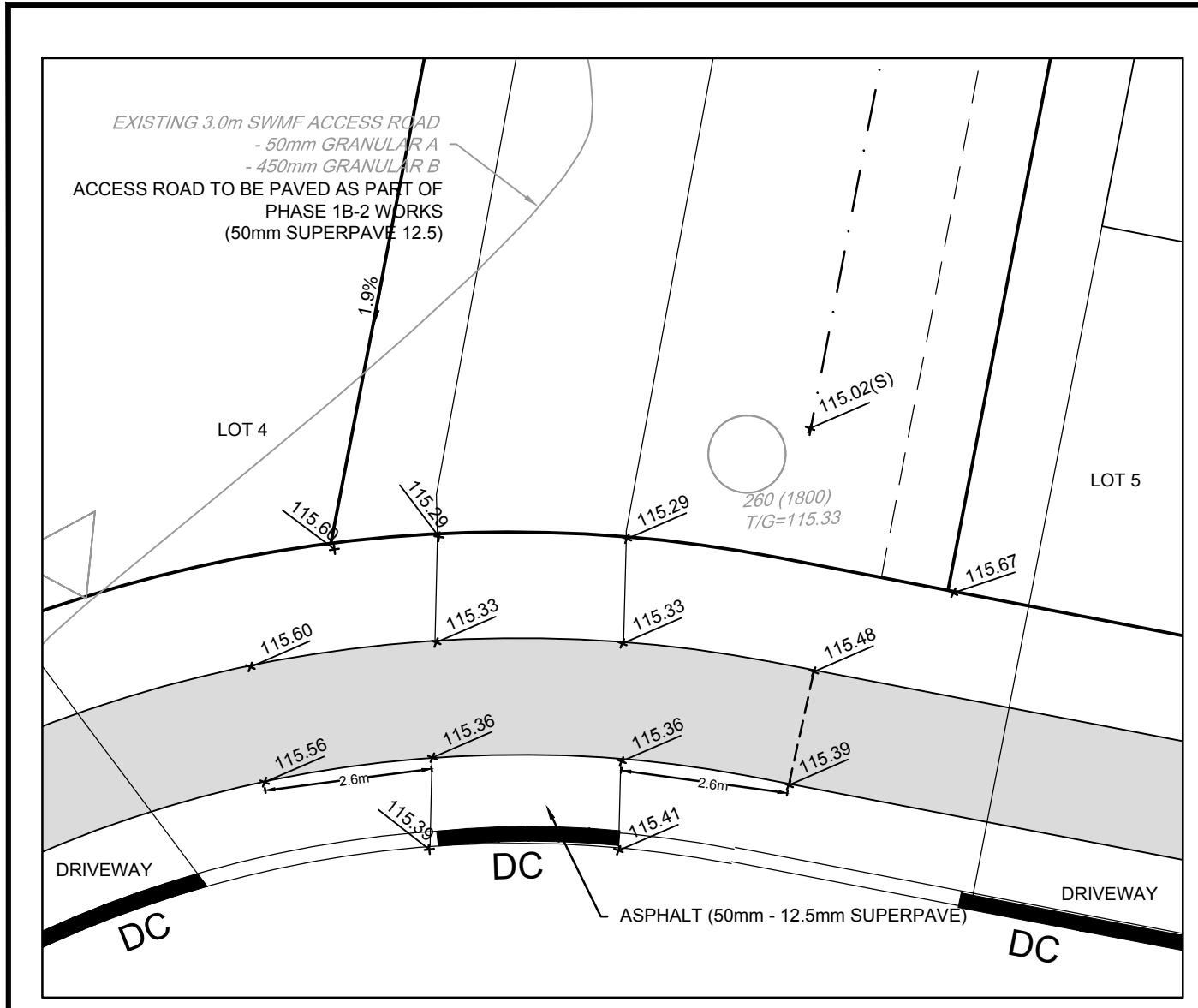
LOCATION:
CITY OF OTTAWA
WEST CAPITAL AIRPARK

DRAWING NAME:
GRADING PLAN - PHASE 1B-2

PROJECT NO.: 102085

REV: REV #7

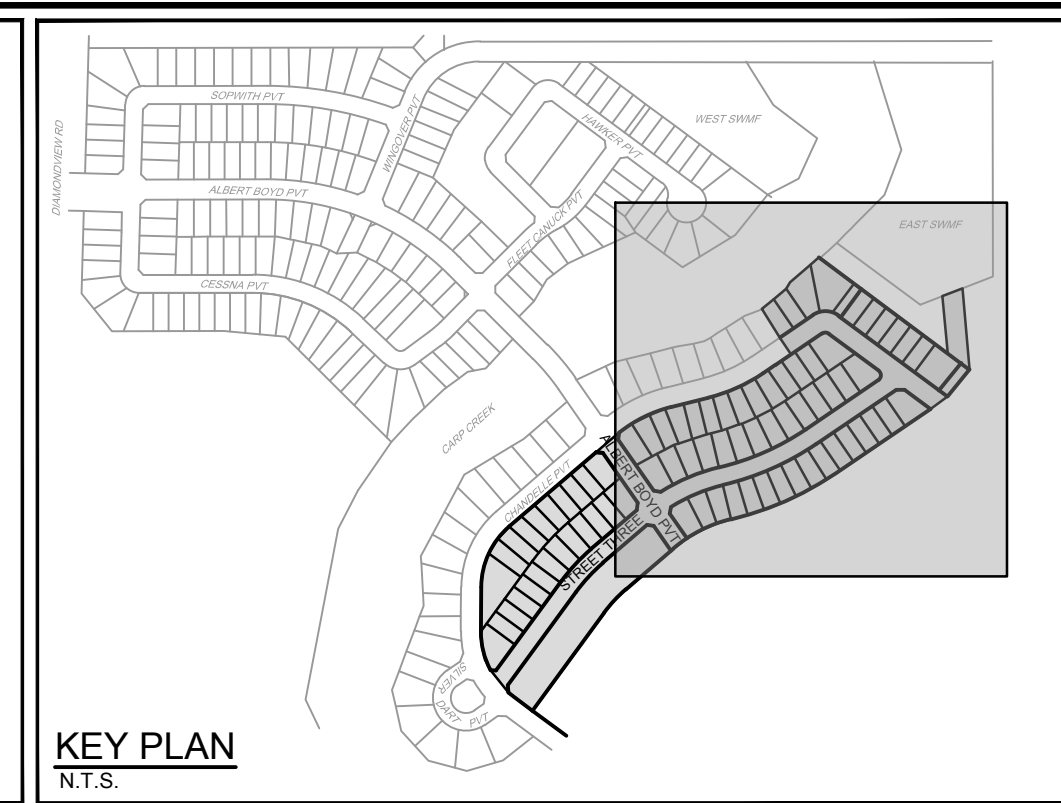
DRAWING NO.: 102085-GR13



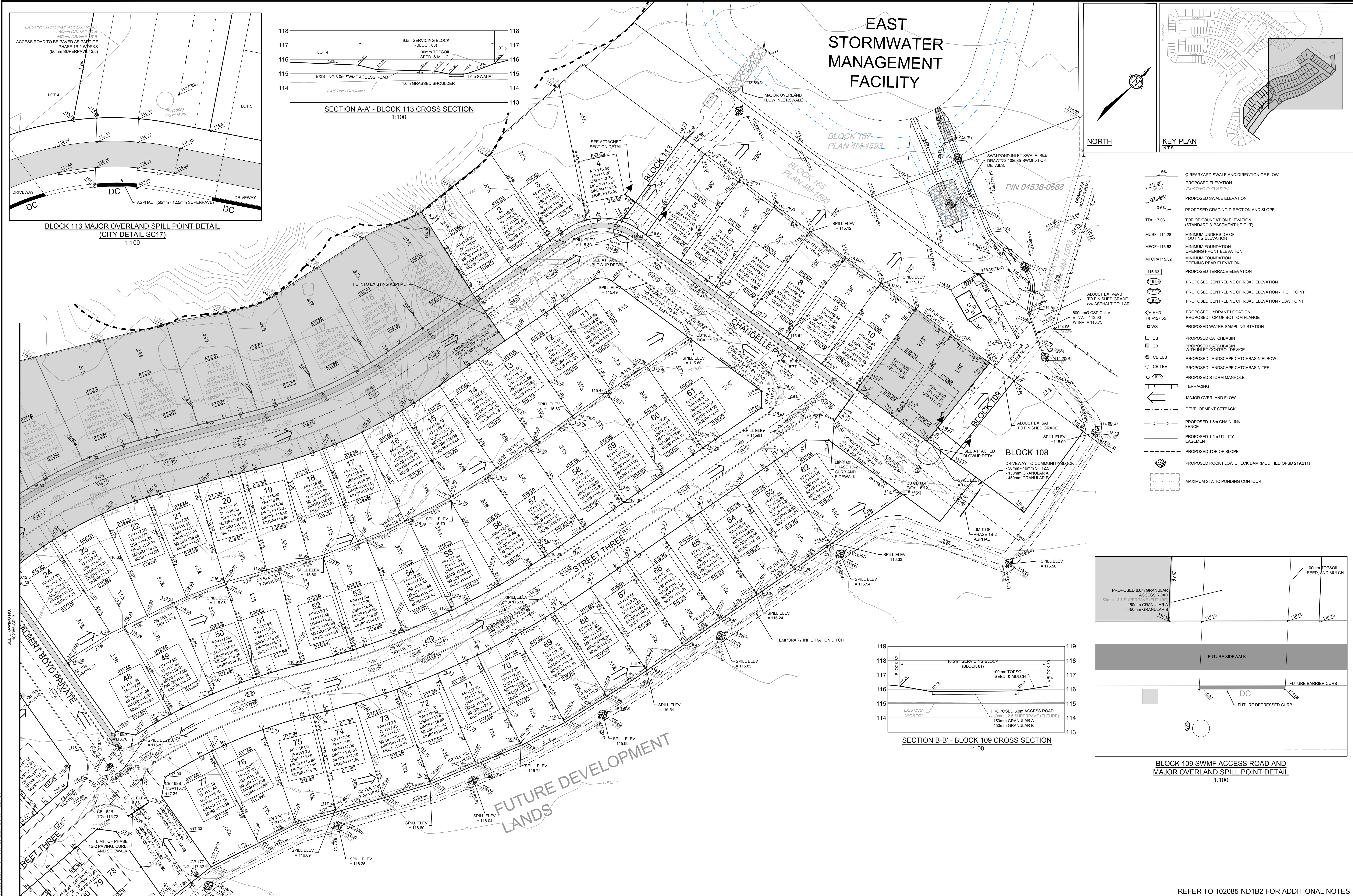
BLOCK 113 MAJOR OVERLAND SPILL POINT DETAIL
(CITY DETAIL SC17)
1:100

SECTION A-A' - BLOCK 113 CROSS SECTION
1:100

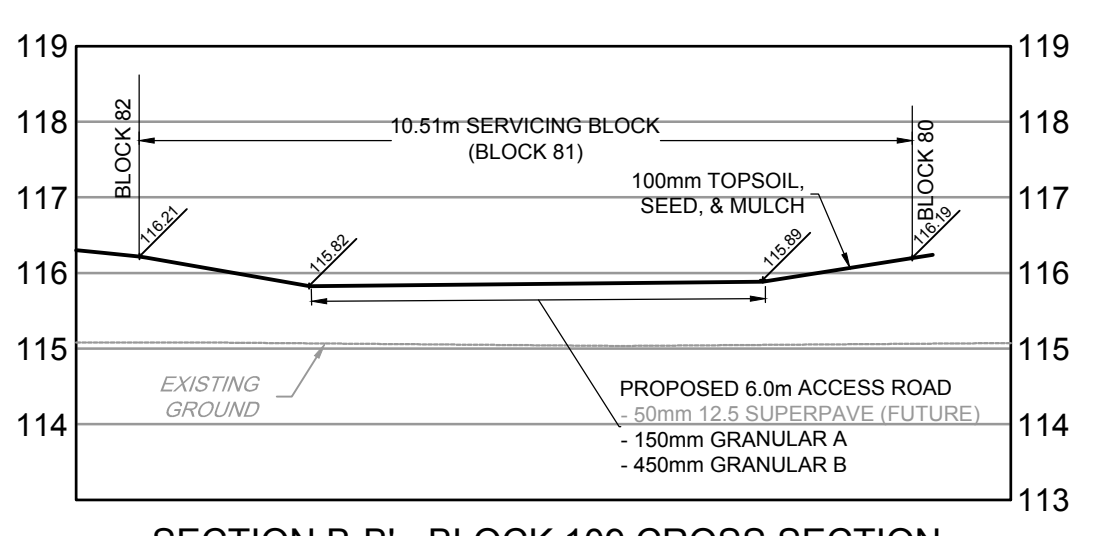
EAST STORMWATER MANAGEMENT FACILITY



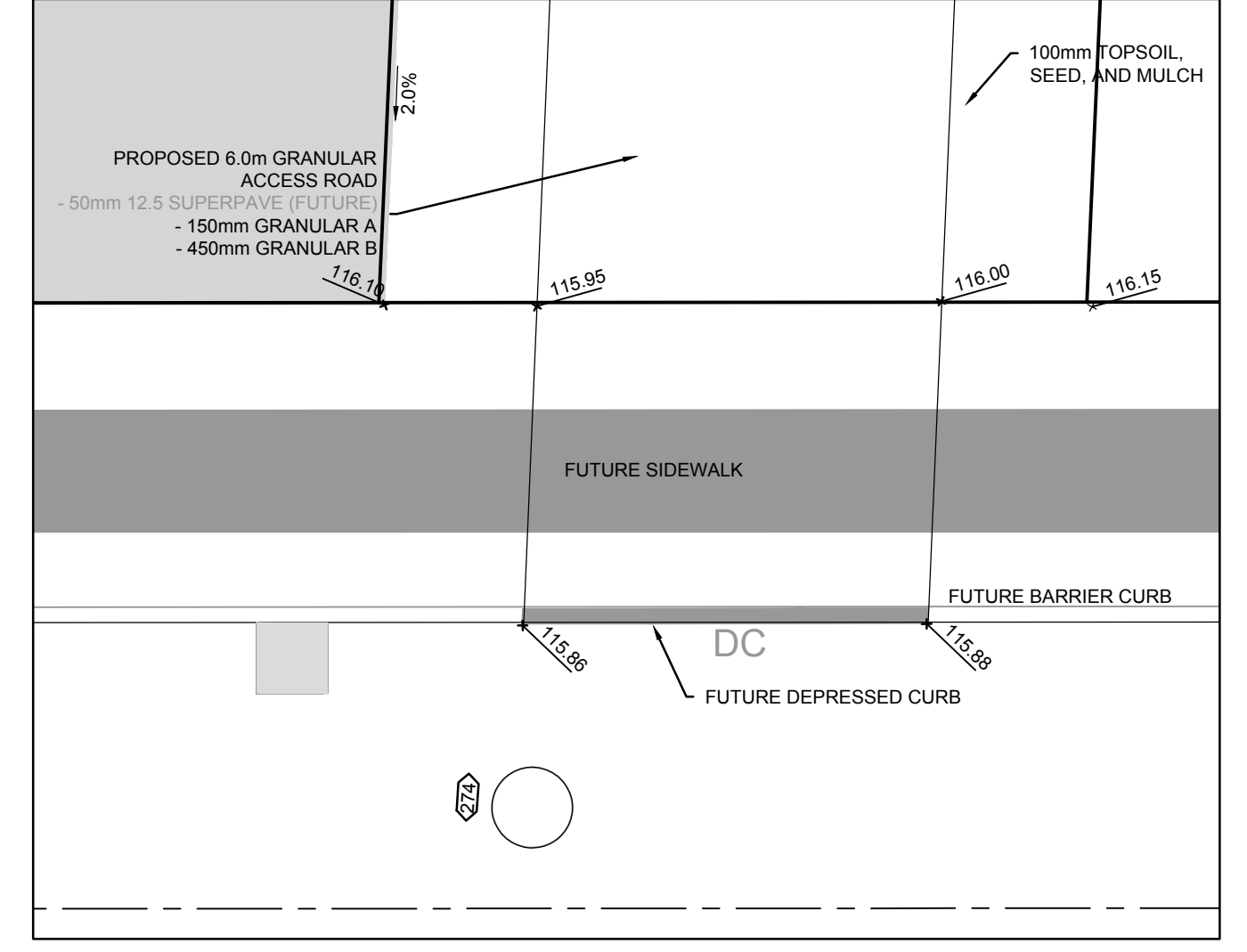
KEY PLAN
N.T.S.



- 1.5% PROPOSED SWALE ELEVATION
- PROPOSED ELEVATION
- EXISTING ELEVATION
- PROPOSED SWALE ELEVATION
- 0.6% PROPOSED GRADING DIRECTION AND SLOPE
- TF=117.03 TOP OF FOUNDATION ELEVATION (STANDARD 8' BASEMENT HEIGHT)
- MUSF=114.28 MINIMUM UNDERSIDE OF FOOTING ELEVATION
- MFOF=116.63 MINIMUM FOUNDATION OPENING FRONT ELEVATION
- MFOR=115.32 MINIMUM FOUNDATION OPENING REAR ELEVATION
- 116.63 PROPOSED TERRACE ELEVATION
- 116.93 PROPOSED CENTRELINE OF ROAD ELEVATION
- 116.95 PROPOSED CENTRELINE OF ROAD ELEVATION - HIGH POINT
- 116.92 PROPOSED CENTRELINE OF ROAD ELEVATION - LOW POINT
- HYD PROPOSED HYDRANT LOCATION
- TF=127.55 PROPOSED TOP OF BOTTOM FLANGE
- W PROPOSED WATER SAMPLING STATION
- CB PROPOSED CATCHBASIN
- CB WITH INLET CONTROL DEVICE
- CB ELB PROPOSED LANDSCAPE CATCHBASIN ELBOW
- CB TEE PROPOSED LANDSCAPE CATCHBASIN TEE
- MANHOLE PROPOSED STORM MANHOLE
- TERRACING
- MAJOR OVERLAND FLOW
- DEVELOPMENT SETBACK
- PROPOSED 1.5m CHAINLINK FENCE
- PROPOSED 1.5m UTILITY EASEMENT
- PROPOSED TOP OF SLOPE
- PROPOSED ROCK FLOW CHECK DAM (MODIFIED OPSD 219.211)
- MAXIMUM STATIC PONDING CONTOUR



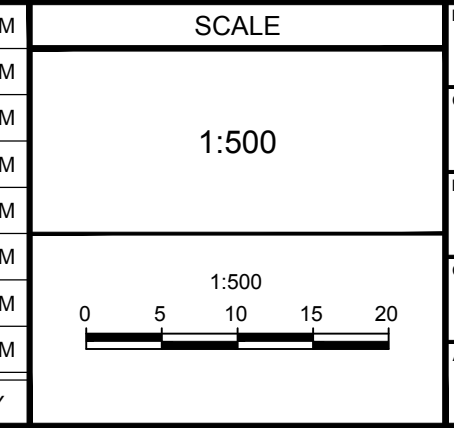
SECTION B-B' - BLOCK 109 CROSS SECTION
1:100



BLOCK 109 SWMF ACCESS ROAD AND MAJOR OVERLAND SPILL POINT DETAIL
1:100

NOTE:
THE POSITION OF ALL POLE LINES, CONDUITS, WATERMANS, SEWERS AND OTHER UNDERGROUND AND OVERGROUND UTILITIES AND STRUCTURES IS NOT NECESSARILY SHOWN ON THE CONTRACT DRAWINGS, AND WHERE SHOWN, THE ACCURACY OF THE POSITION OF SUCH UTILITIES AND STRUCTURES IS NOT GUARANTEED. BEFORE STARTING WORK, DETERMINE THE EXACT LOCATION OF ALL SUCH UTILITIES AND STRUCTURES AND ASSUME ALL LIABILITY FOR DAMAGE TO THEM.

No.	REVISION	DATE	BY	No.	REVISION	DATE	BY
8	REVISED POND INLET SWALE	MAY 14/24	ARM	1	ISSUED FOR COORDINATION	JAN 18/23	ARM
7	ADDITIONAL ORIGINAL GROUND SURFACE CONTOUR INTERVALS ADDED	APR 24/24	ARM	2	ISSUED FOR REVIEW	JUL 28/23	ARM
6	REVISED PER CITY COMMENTS	FEB 20/24	ARM	3	ISSUED FOR TENDER	JAN 18/23	ARM
5	ISSUED WITH ADDENDUM #4	JAN 12/24	ARM	4	ISSUED FOR TENDER	DEC 7/23	ARM
4	ISSUED WITH ADDENDUM #2	JAN 5/24	ARM	5	ISSUED WITH ADDENDUM #4	JAN 12/24	ARM
3	ISSUED FOR TENDER	DEC 7/23	ARM	6	REVISED PER CITY COMMENTS	FEB 20/24	ARM
2	ISSUED FOR REVIEW	JUL 28/23	ARM	7	ADDITIONAL ORIGINAL GROUND SURFACE CONTOUR INTERVALS ADDED	APR 24/24	ARM
1	ISSUED FOR COORDINATION	JAN 18/23	ARM	8	REVISED POND INLET SWALE	MAY 14/24	ARM
9	ISSUED FOR REGISTRATION AND ECA	JUN 28/24	ARM				



DESIGN: MNP
CHECKED: ARM
DRAWN: MNP
CHECKED: ARM
APPROVED: SMG

SCALE: 1:500

0 5 10 15 20

REFER TO 102085-ND1B2 FOR ADDITIONAL NOTES

LOCATION: CITY OF OTTAWA WEST CAPITAL AIRPARK

DRAWING NAME: GRADING PLAN - PHASE 1B-2

PROJECT NO.: 102085

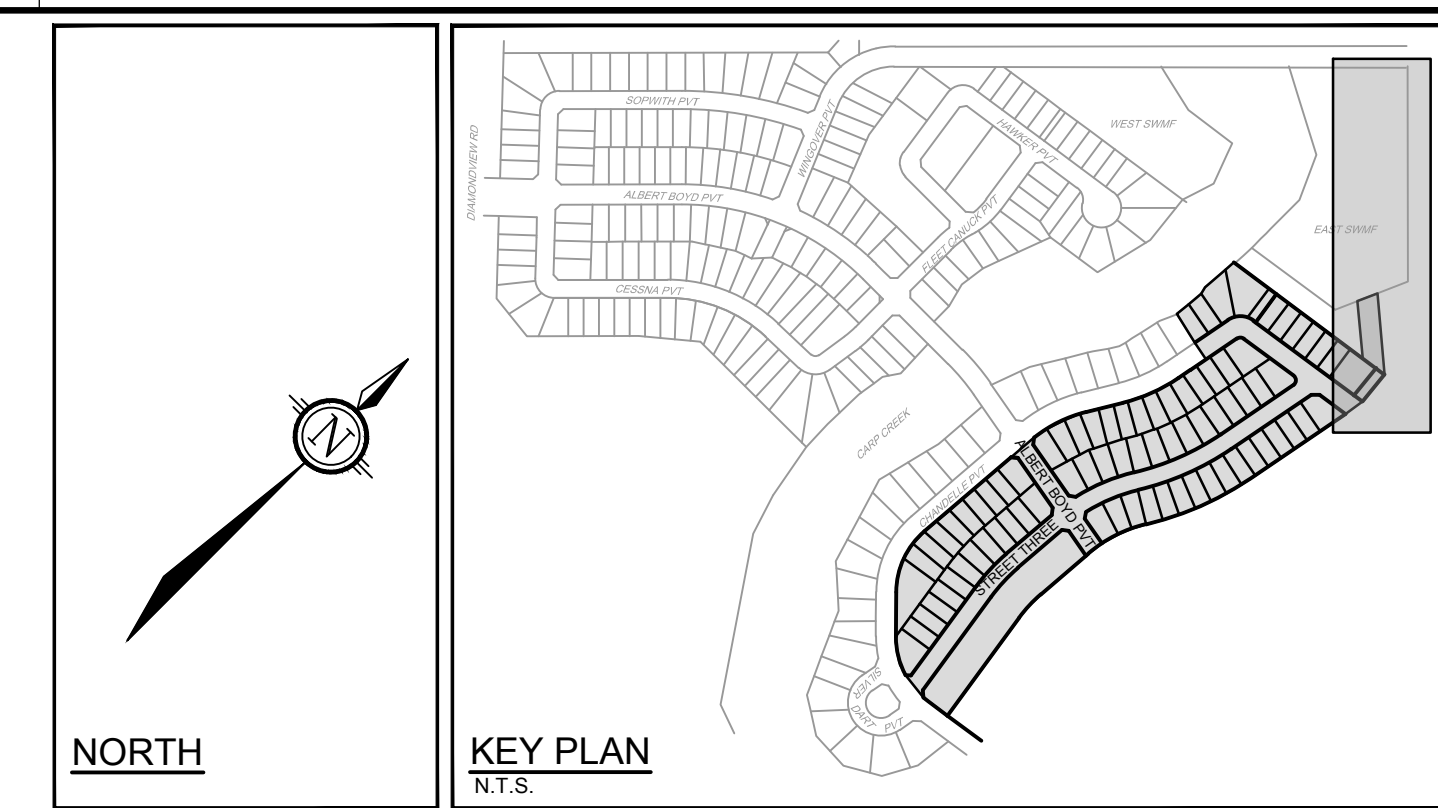
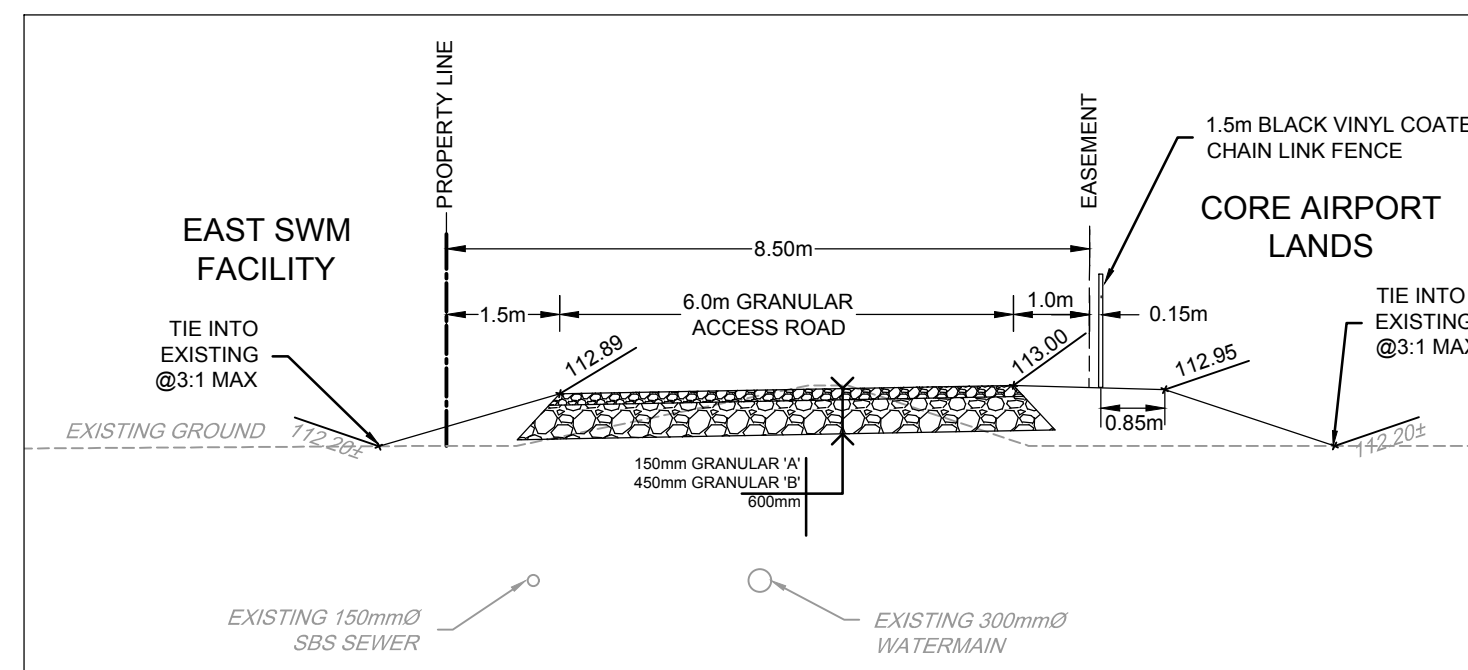
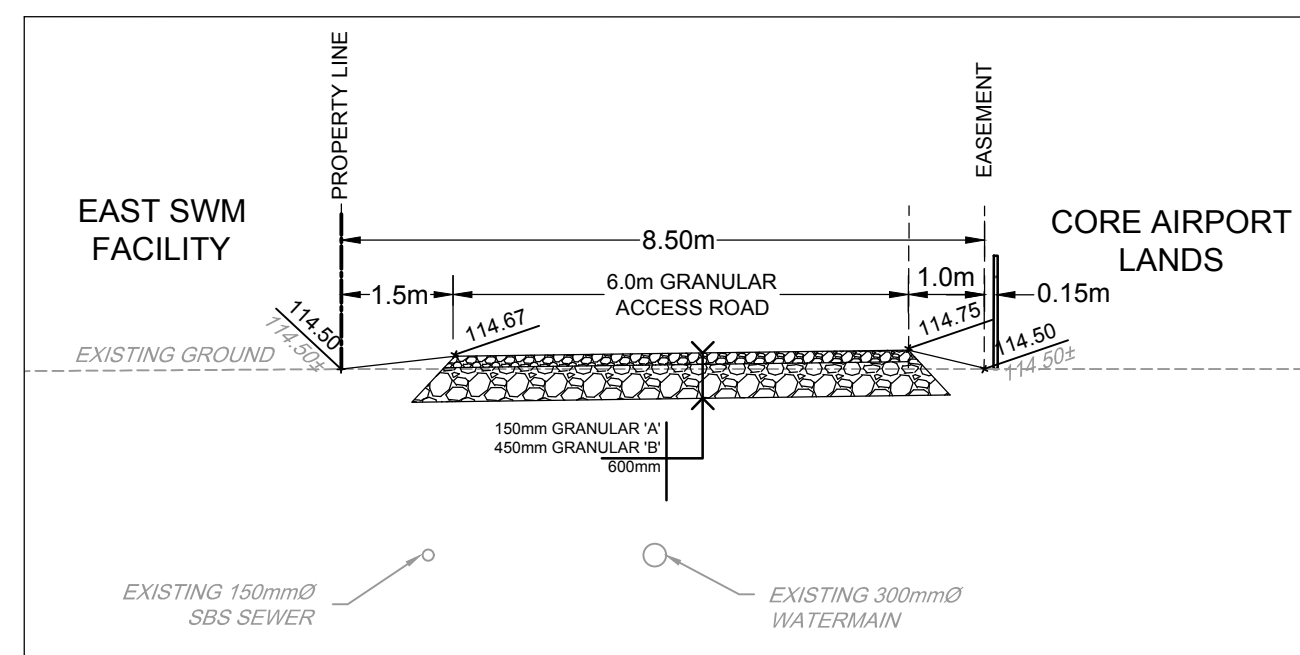
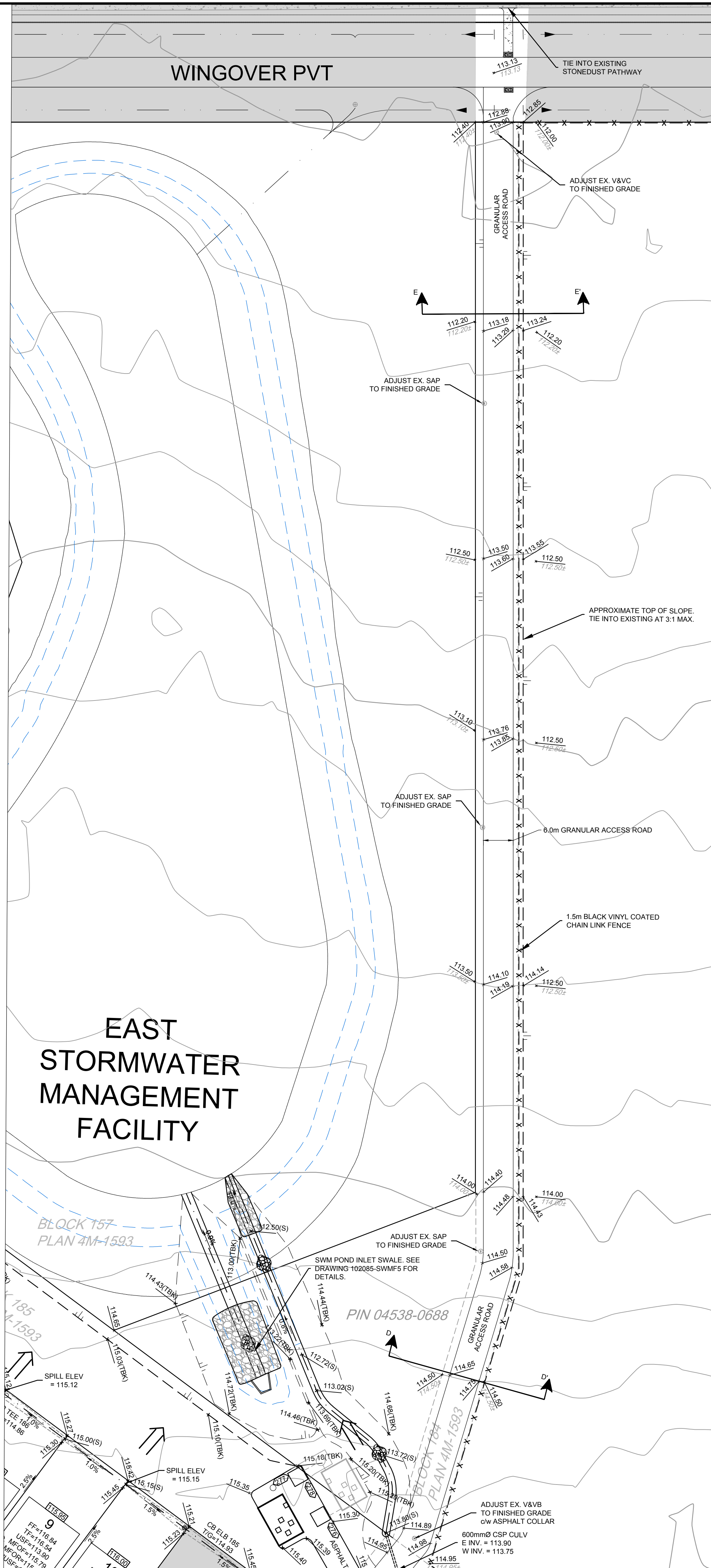
REV: REV # 9

DRAWING NO.: 102085-GR14

NOVATECH
Engineers, Planners & Landscape Architects
Suite 200, 240 Michael Cowpland Drive
Ottawa, Ontario, Canada K2M 1P6
Telephone: (613) 254-9643
Facsimile: (613) 254-5867
Website: www.novatech-eng.com

PROFESSIONAL ENGINEER
A.A. ROYCE
100616298
June 25, 2024
PROVINCE OF ONTARIO

PROFESSIONAL ENGINEER
A.R. MCALLEY
100141256
June 25, 2024
PROVINCE OF ONTARIO

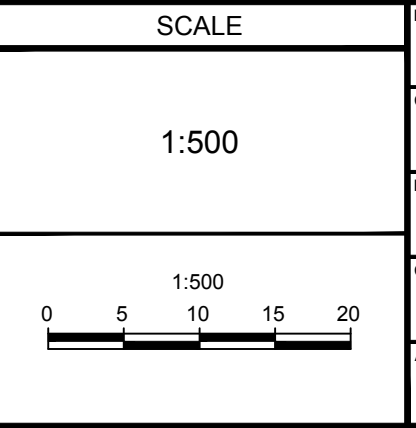


- 1.5% REARYARD SWALE AND DIRECTION OF FLOW
- 117.00 PROPOSED ELEVATION
- 116.50 EXISTING ELEVATION
- 127.55(S) PROPOSED SWALE ELEVATION
- 0.6% PROPOSED GRADING DIRECTION AND SLOPE
- TERRACING
- MAJOR OVERLAND FLOW
- PROPOSED 1.5m CHAINLINK FENCE

102085-GR15 - PHASE 2/3/4/5 - CIVIL - 102085-2B3-GR-Rev1, Jan 26, 2024 - 2:07pm, mlabian

NOTE:
 THE POSITION OF ALL POLE LINES, CONDUITS, WATERMANS, SEWERS AND OTHER UNDERGROUND AND OVERGROUND UTILITIES AND STRUCTURES IS NOT NECESSARILY SHOWN ON THE CONTRACT DRAWINGS, AND WHERE SHOWN, THE ACCURACY OF THE POSITION OF SUCH UTILITIES AND STRUCTURES IS NOT GUARANTEED. BEFORE STARTING WORK, DETERMINE THE EXACT LOCATION OF ALL SUCH UTILITIES AND STRUCTURES AND ASSUME ALL LIABILITY FOR DAMAGE TO THEM.

No.	REVISION	DATE	BY
7	ISSUED FOR REGISTRATION AND ECA (NO CHANGES)	JUN 28/24	ARM
6	REVISED POND INLET SWALE	MAY 14/24	ARM
5	REVISED PER CITY COMMENTS	FEB 20/24	ARM
4	ISSUED WITH ADDENDUM #4	JAN 12/24	ARM
3	ISSUED WITH ADDENDUM #2	JAN 5/24	ARM
2	ISSUED FOR TENDER	DEC 7/23	ARM
1	ISSUED FOR REVIEW	JUL 28/23	ARM



DESIGNED: AAR
 CHECKED: ARM
 DRAWN: AAR
 APPROVED: ARM
 SMG



NOVATECH
 Engineers, Planners & Landscape Architects
 Suite 200, 240 Michael Cowpland Drive
 Ottawa, Ontario, Canada K2M 1P6
 Telephone: (613) 254-9643
 Facsimile: (613) 254-5867
 Website: www.novatech-eng.com

REFER TO 102085-ND1B2 FOR ADDITIONAL NOTES

LOCATION CITY OF OTTAWA WEST CAPITAL AIRPARK DRAWING NAME GRADING PLAN - BLOCK 184	PROJECT No.: 102085 REV: 7 DRAWING No.: 102085-GR15
---	---