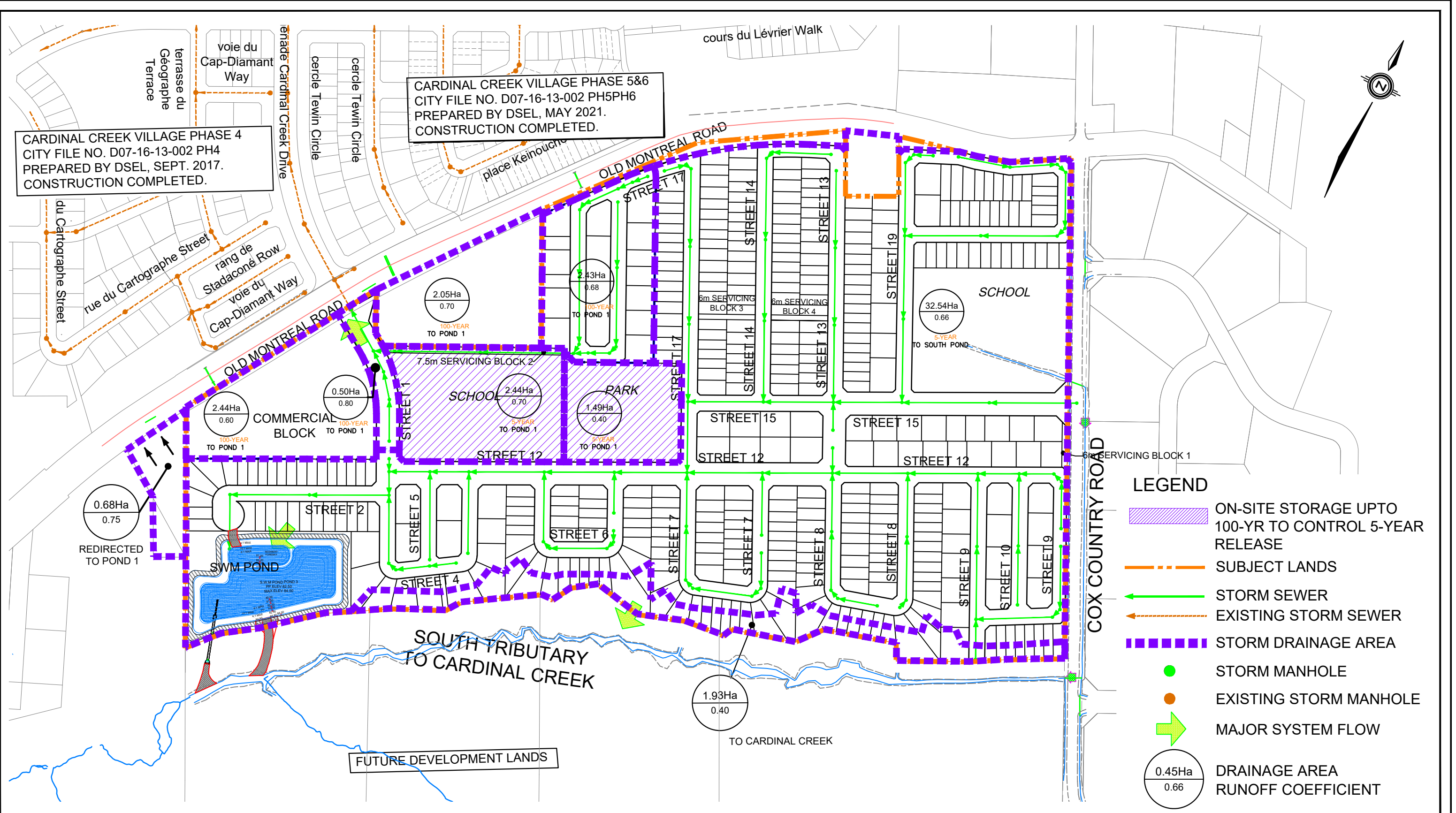


CARDINAL CREEK VILLAGE PHASE 5&6
 CITY FILE NO. D07-16-13-002 PH5PH6
 PREPARED BY DSEL, MAY 2021.
 CONSTRUCTION COMPLETED.

CARDINAL CREEK VILLAGE PHASE 4
 CITY FILE NO. D07-16-13-002 PH4
 PREPARED BY DSEL, SEPT. 2017.
 CONSTRUCTION COMPLETED.



- LEGEND**
- ON-SITE STORAGE UPTO 100-YR TO CONTROL 5-YEAR RELEASE
 - SUBJECT LANDS
 - STORM SEWER
 - EXISTING STORM SEWER
 - STORM DRAINAGE AREA
 - STORM MANHOLE
 - EXISTING STORM MANHOLE
 - MAJOR SYSTEM FLOW
 - 0.45Ha
0.66 DRAINAGE AREA RUNOFF COEFFICIENT

120 Iber Road, Unit 103
 Stittsville, ON K2S 1E9
 TEL: (613) 836-0856
 FAX: (613) 836-7183
 www.DSEL.ca



**POND DRAINAGE PLAN
 CARDINAL CREEK VILLAGE SOUTH**

PROJECT No.:	19-1153
SCALE:	1:4000
DATE:	NOVEMBER 2024
FIGURE:	10